



SUPERIOR POLICE TRAINING MAPPING APP

<https://portal.superiordcgis.org/portal/apps/webappviewer/index.html?id=037976eb58f648dab5ee286ebbb86a6c>



SUPERIOR
WISCONSIN

OPENING PAGE

Superior Police Training Mapping App Douglas County GIS

Find address or place

The City of Superior/Douglas County prepares and uses this data for its own purposes. This data displays general boundaries and may not be appropriate for site specific uses. The City/County uses data believed to be accurate; however, a degree of error is inherent in all maps. This data is distributed "AS-IS" without warranties of any kind, either expressed or implied including, but not limited to, warranties of suitability to a particular purpose or use. Detailed on-the-ground surveys and historical analysis of sites may differ substantially from this data. The user of the provided information may find it desirable and beneficial to consult other sources and engage professionals to analyze, and provide advice relating to, the information made available by the City/County and other data sources.

SUPERIOR
WISCONSIN

DOUGLAS COUNTY
WISCONSIN

Do not show this splash screen again.

OK

App State
Click to restore the map extent and layers visibility where you left off.

Move mouse to get coordinates

Louis/Red River Stream Bank Protection Area

Town of Superior

WI 35/CTH C

CTH A

CTH K

CTH UU

Amnicon

Mouth of the Middle Preserve

WI 13

CR 150

CH 13

CH 54

CH 56

US 53

MN 23

data © OpenStreetMap contributors, Microsoft, Facebook, Inc. and its affiliates, Esri

Bookmarks

Address Search

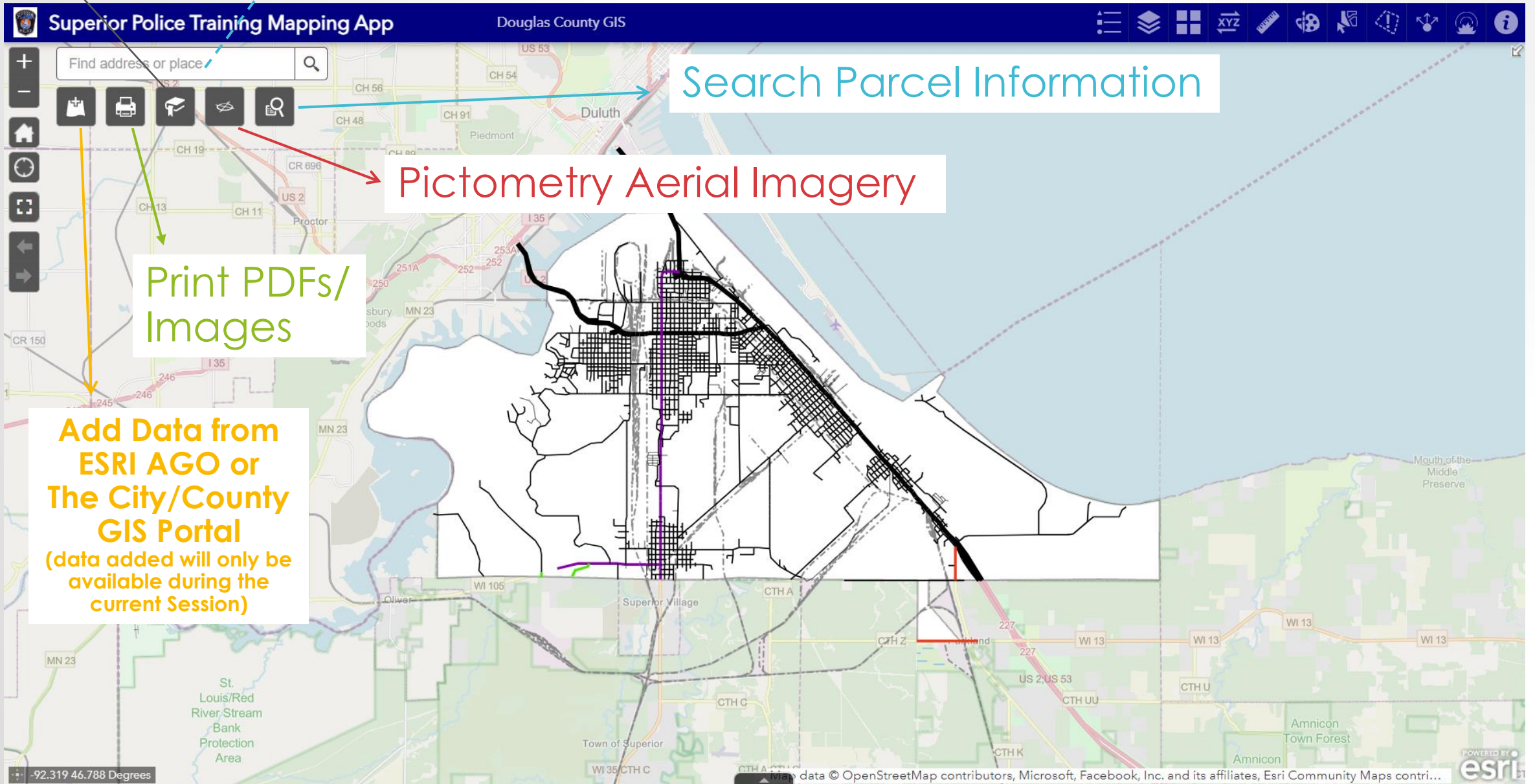
WIDGETS (TOOLS)

Search Parcel Information

Pictometry Aerial Imagery

Print PDFs/
Images

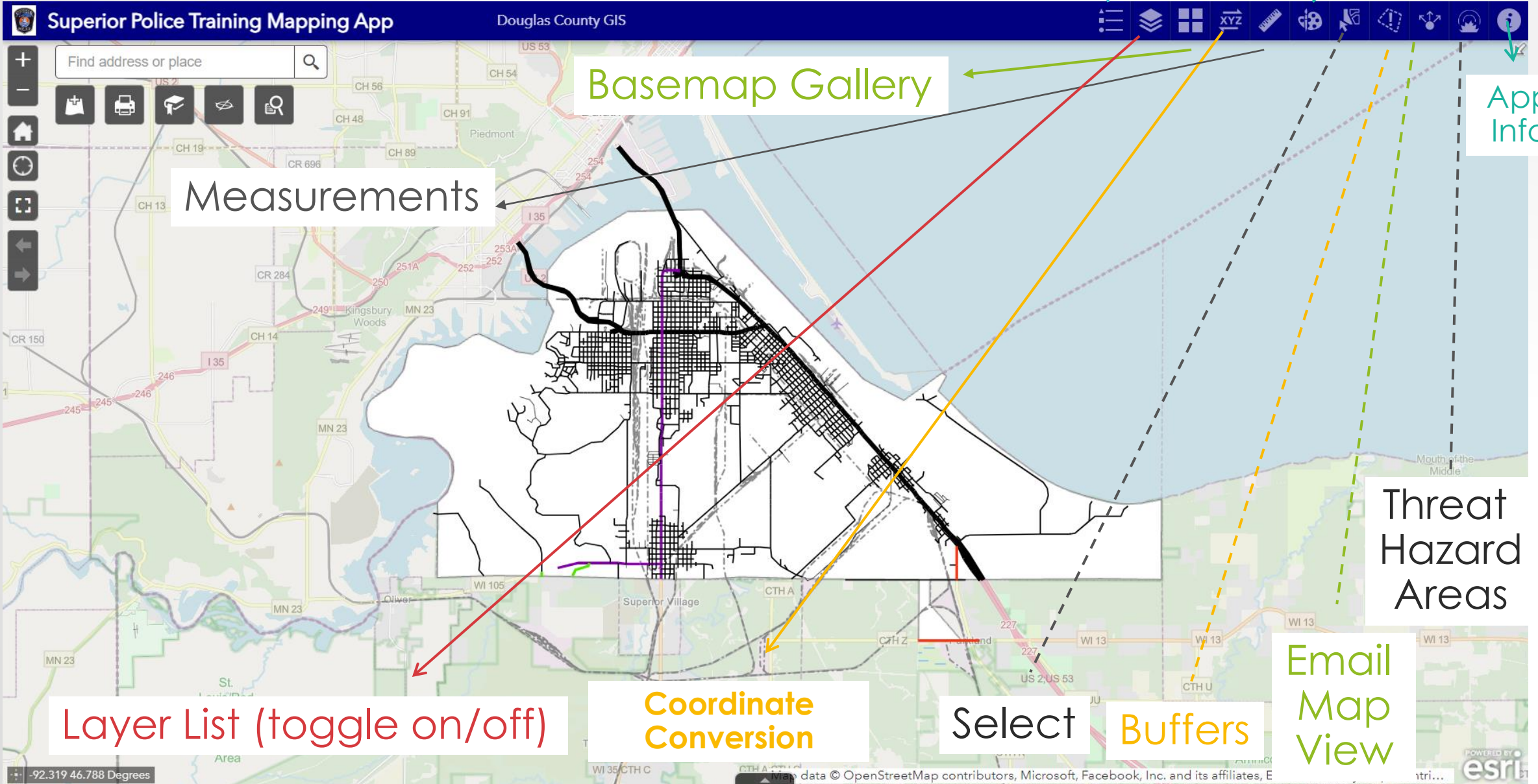
**Add Data from
ESRI AGO or
The City/County
GIS Portal**
(data added will only be
available during the
current Session)



WIDGETS (TOOLS)

Legend

Drawing Tools



Measurements

Basemap Gallery

App Info

Layer List (toggle on/off)

Coordinate Conversion

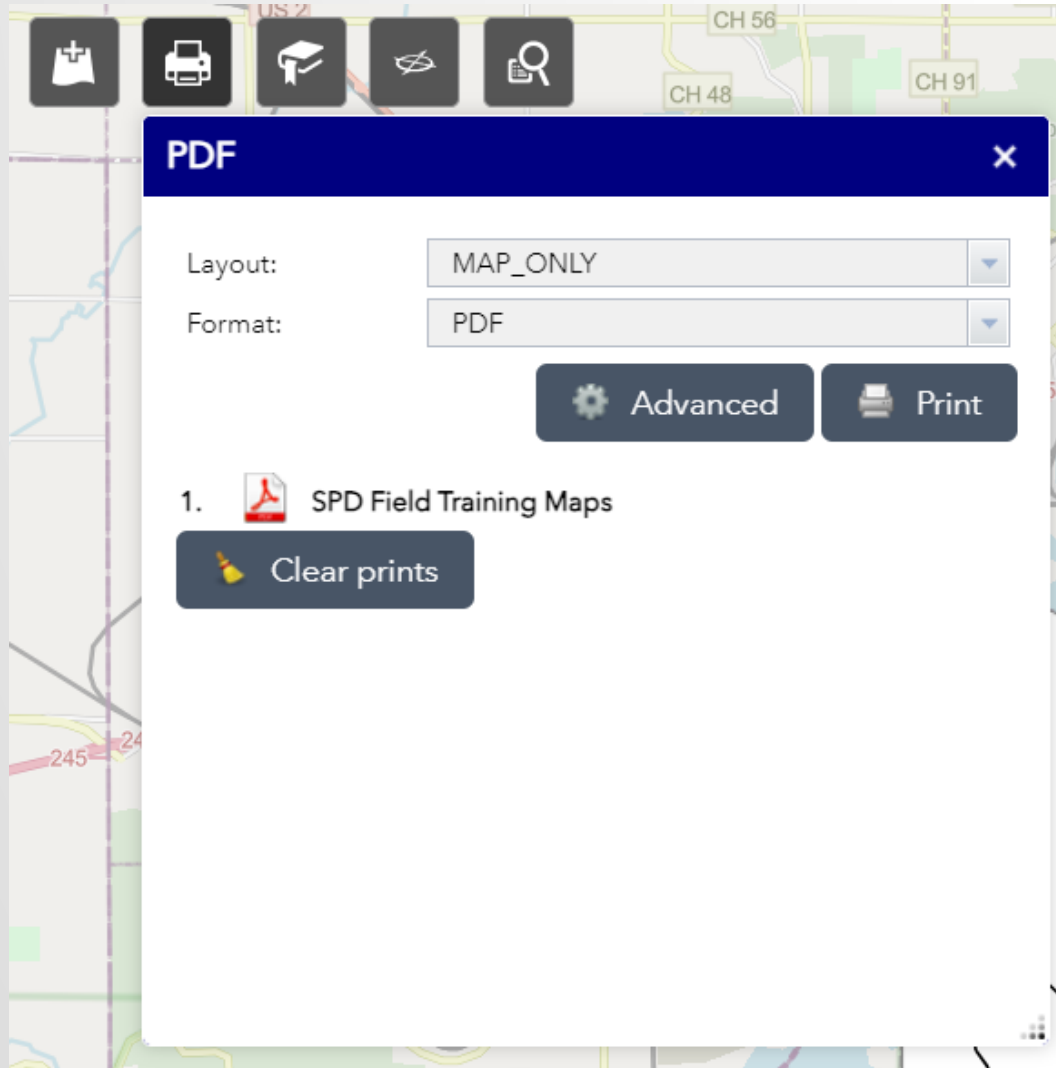
Select

Buffers

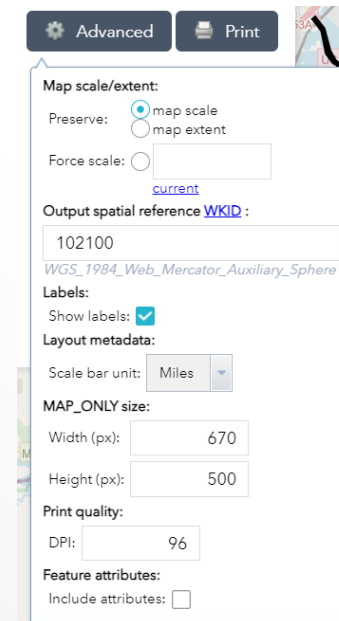
Threat Hazard Areas

Email Map View

PRINTING TOOL

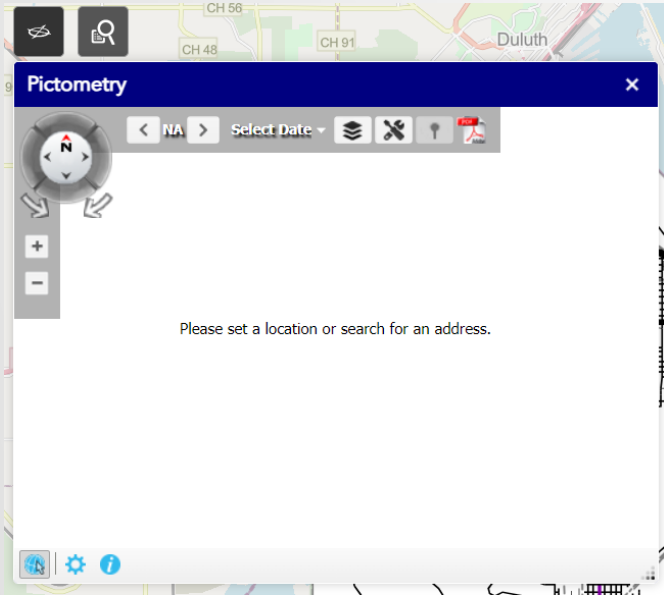


- Layout Menu
 - Choose Size and Type
- Format Menu
 - Choose PDF (default) or image file type
- Advanced allows for advanced setting choices

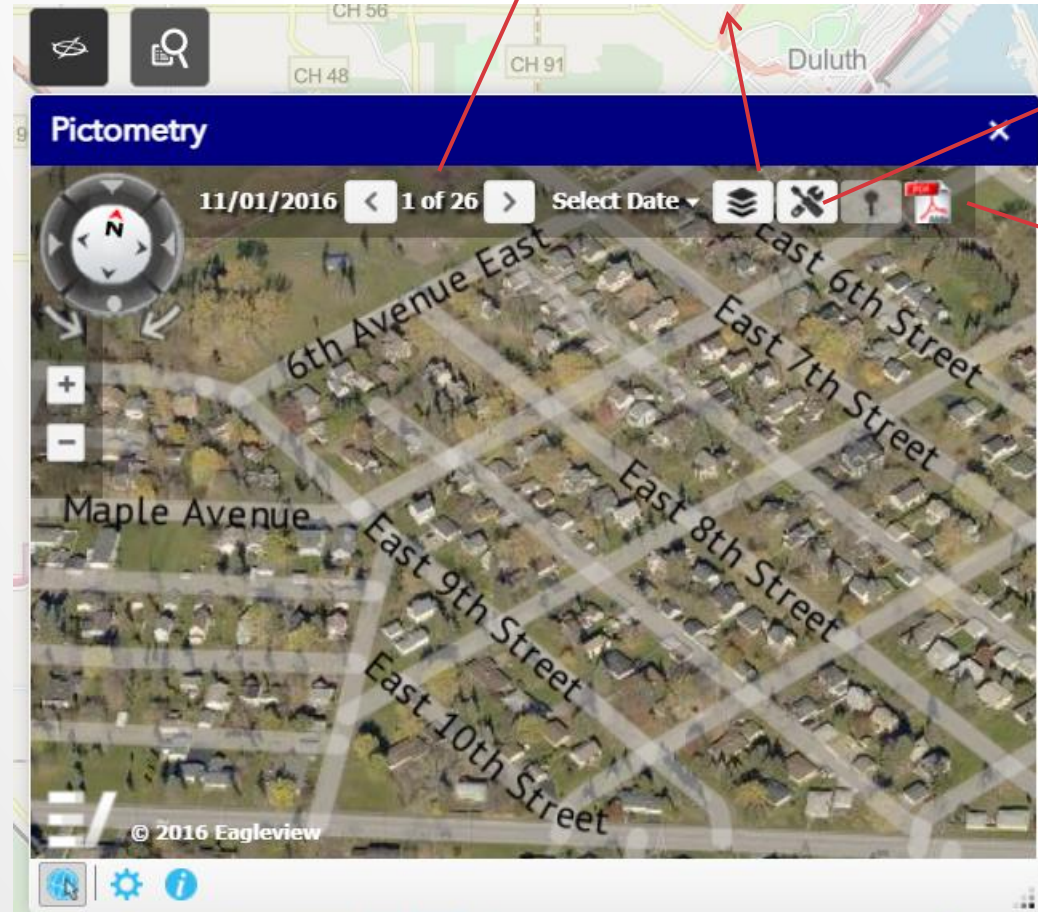


PICTOMETRY TOOL

- Select Date Menu
 - Choose Which Year of Photos to See
- Arrows
 - Move Through Photo Library for Each Year Available
- GIS Layers Overlay



Click on Map
to Select a location



Pictometry Tools

Export Area as PDF