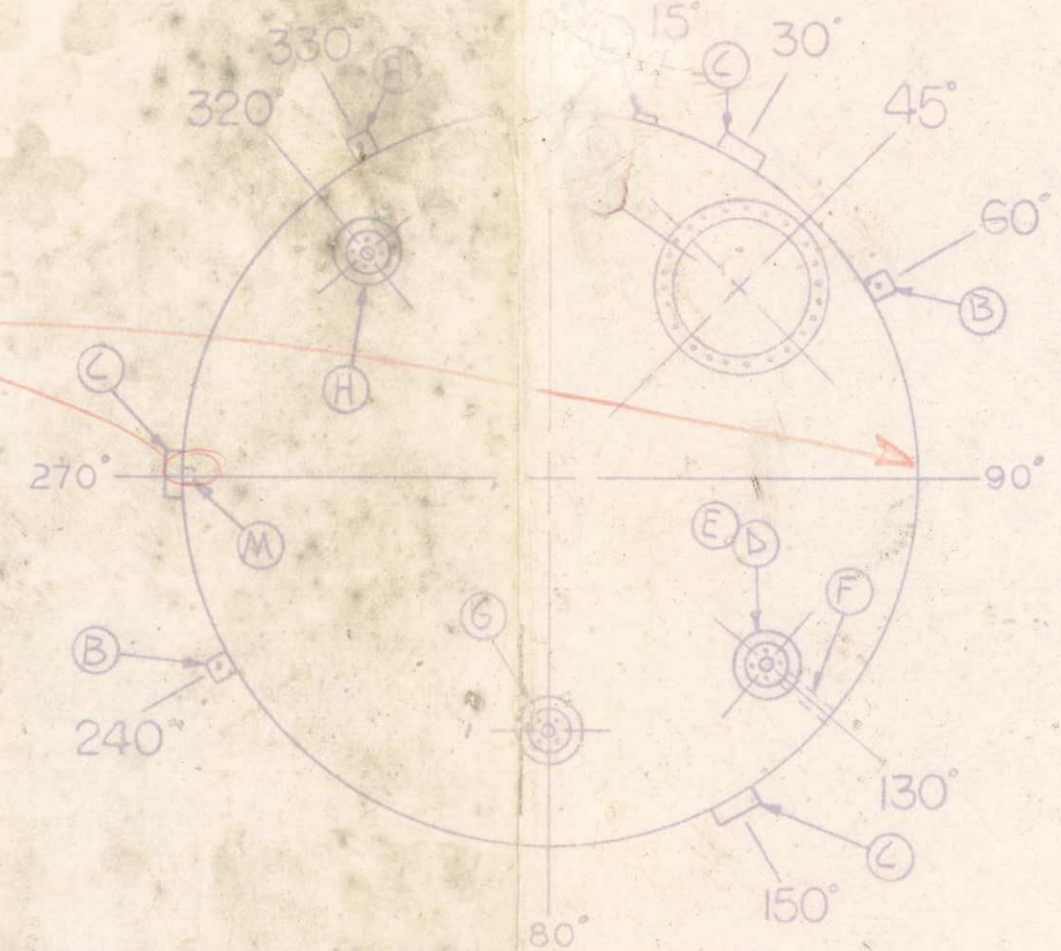
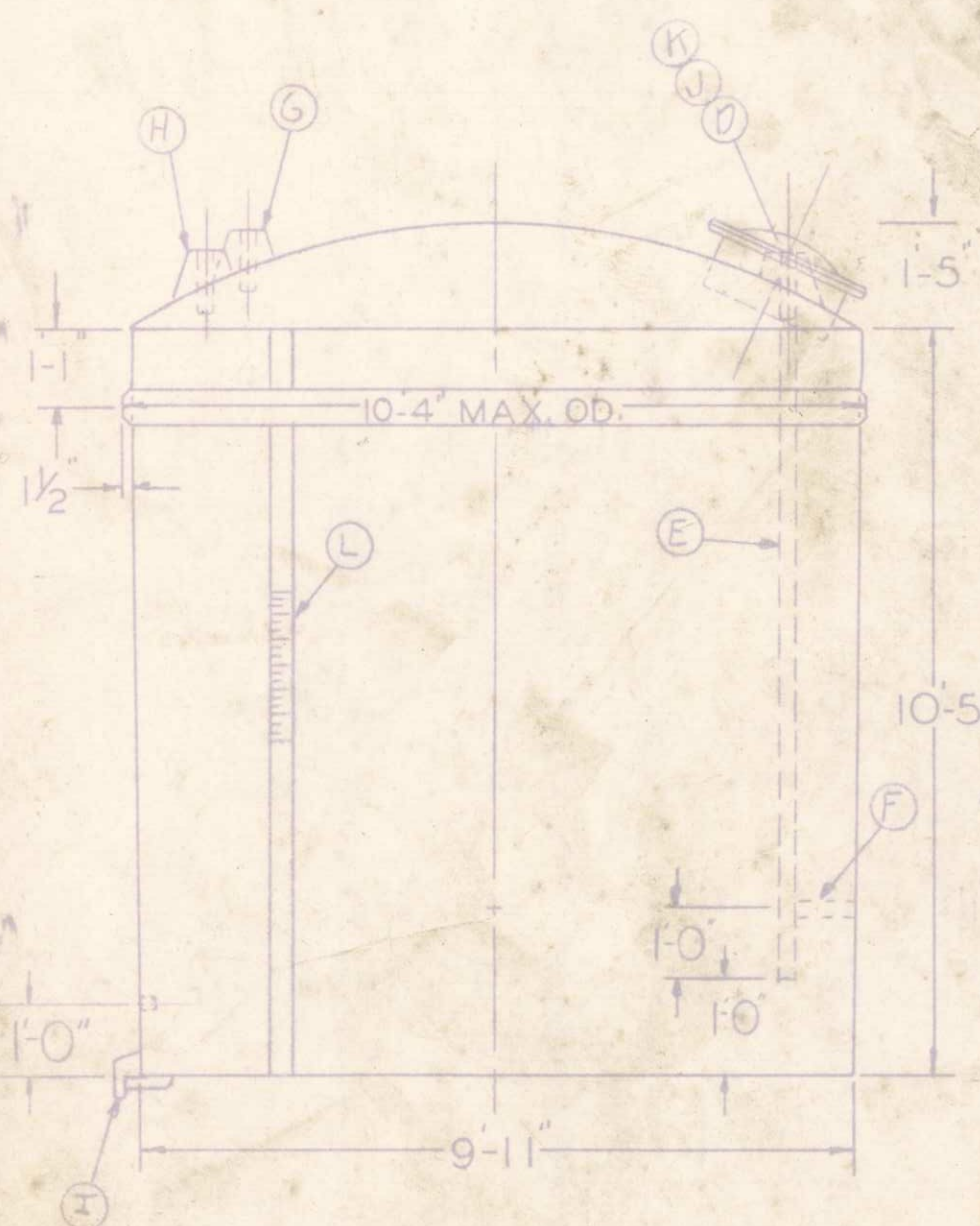


Place 3/4" aplg.
at 90°



SCALE 1/8" = 1'

FITTING ORIENTATION

CUSTOMER HARRIS MECHANICAL CONTRACTING COMPANY			
DESTINATION SUPERIOR, WISCONSIN			
SERVICE (TANK MAX SP. GR. 1.7) FERRIC CHLORIDE SP. GR. 1.607			
QUANTITY 1	MODEL 106 MACW	DM. CAPACITY 5940 GALS.	APPROX WEIGHT 1590 LBS.
MODIFICATIONS & NOTES			
SURFACE MAT 20 MIL GLASS		LINER RESIN BISPHENOL A FUMARATE	
WIND RESIN ISOPHTHALIC		INSULATION	
EXTERIOR RESIN		GEL COAT	
RIBS 1-SHOWN		-(W) SPECIFIC GRAVITY 1.7	

SHOP DRAWING REVIEW
NO EXCEPTIONS TAKEN
MAKE NOTED CORRECTIONS
AMEND AND RESUBMIT
BONESTROO, ROSENE, ANDERLIK
& ASSOCIATES, INC.
Date 5/15/77 By RST

ACCESSORIES

MK.	ITEM	NO.	SIZE	DEGREE	RADIUS	HEIGHT
A	LIFT LUG	2		330°		1-TOP 1-BOT
B	LIFT LUG	2		240°		2-TOP
C	HOLD DOWN LUG	3		30°/150° 270°		BOT
D	FLG NOZ CONE GUS (FILL)	1	2"	130°	4'-0"	TOP
E	PIPE (FRP) (9'-7" APPROX.)	1	2"	FOR "D"		
F	PIPE SUPT	1	2"	130°		2'-0" B
G	FLG NOZ CONE GUS (VENT)	1	2"	180°	3'-6"	TOP
H	FLG NOZ CONE GUS (RELIEF)	1	2"	320°	4'-0"	TOP
I	FLG SIDE BOTTOM DRAIN	1	2"	0°		BOT
J	MW TOP FLG W/COVER	1	22"	45°	3'-9"	TOP
K	MW PACKAGE (316 S.S.)	1	22"	FOR "J"		
L	GAUGE CALIBRATION	1		15°		T-8
M	THR'D CPL'G (FRP)	1	3/4"	270°		1'-0" BOT
N						
O						
P						
Q						
R						
S						
T						
U						
V						
W						
X						
Y						
Z						

APPROVED AS DRAWN

APPROVED AS NOTED

REVISE & RESUBMIT

CHK'D. By _____ DATE / /

IMPORTANT: FABRICATION WILL NOT BE SCHEDULED AND SHIPPING DATE PROMISED UNTIL RECEIPT OF APPROVED OR APPROVED AS NOTED DRAWING

* CUSTOMER NOTE:
CALIBRATION GAUGE "ITEM L" INCREMENTS EVERY 50 GALS., NUMBERED EVERY 250 GALS.

ELEVATION ONLY

Note: This drawing is appld only if submittal is received documenting \$600+ deduct for not providing stoping floor.

DRAWING STATUS		PROPERTY OF OWENS-CORNING FIBERGLAS CORP		DRAWING NO.	
2	PE-APV MN 5-3-77	This print or drawing is confidential and if or any copies thereof shall be returned upon request it is not to be copied, reproduced, or exhibited to outside parties, but is to be used only with reference to contracts or proposals of this corporation. Nothing disclosed herein not publicly available may be used without written permission. Tolerances See PE-C31.1.		HA	
1	APVLA AM 5-8-77			32882	
NO.	REVISION	DATE			