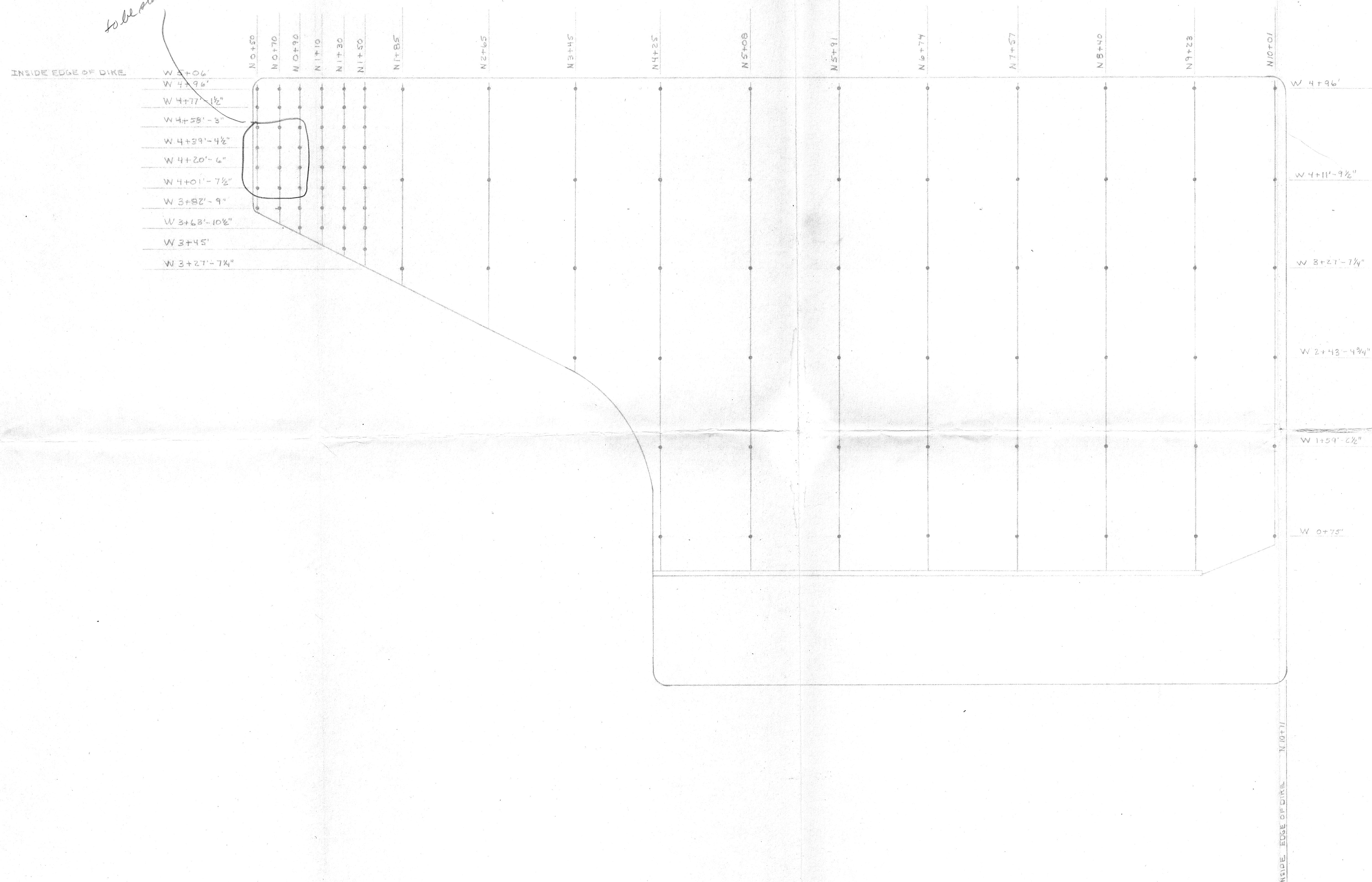


these static areas to be established - y opp d.



CSTP 2

SHOP DRAWING REVIEW
 X NO EXCEPTIONS TAKEN
 MAKE NOTED CORRECTIONS
 AMEND AND RESUBMIT
 BONESTROO, ROSENE, ANDERLIK
 & ASSOCIATES, INC.
 Date: 11/29/77 J.M. RET

REVISION	DATE

HARRIS MECHANICAL CONTRACTING COMPANY
 2300 TERRITORIAL ROAD • ST. PAUL, MINNESOTA 55114 • PHONE 612-646-2911



TITLE
 C.S.O. TREATMENT FACILITIES
 SUPERIOR WISC
 STATIC AREATOR RELOCATION

DATE 11-29-77	SHEET # A-1 27
JOB NO. 670-47	
DRAWN BY J.M.	



Contractor note - slight change in hole position from plans

Requires change from 4-18-77 approval

- ITEM #1 ALUM. GRATINGS & FRAMES FURNISHED BY C.W. OLSON CO. INC. MEASUREMENTS CORRESPOND WITH C.W. OLSON'S DRAWING NO. 3 & HARRIS MECH. PIPING DRAWING P-1
- ITEM #2 NEENAH ACCESS DOOR FR. 660" DH FURNISHED BY C.W. OLSON CO. INC. MEASUREMENTS CORRESPOND WITH C.W. OLSON'S DRAWING NO. 17 & HARRIS MECH. PIPING DRAWING P-1

SHOP DRAWING REVIEW
 NO EXCEPTIONS TAKEN
 MAKE NOTED CORRECTIONS
 AMEND AND REQUIRANT
 STROUD, ROSENE, ANDERLIK
 & ASSOCIATES, INC.
 6/11/77 PBT

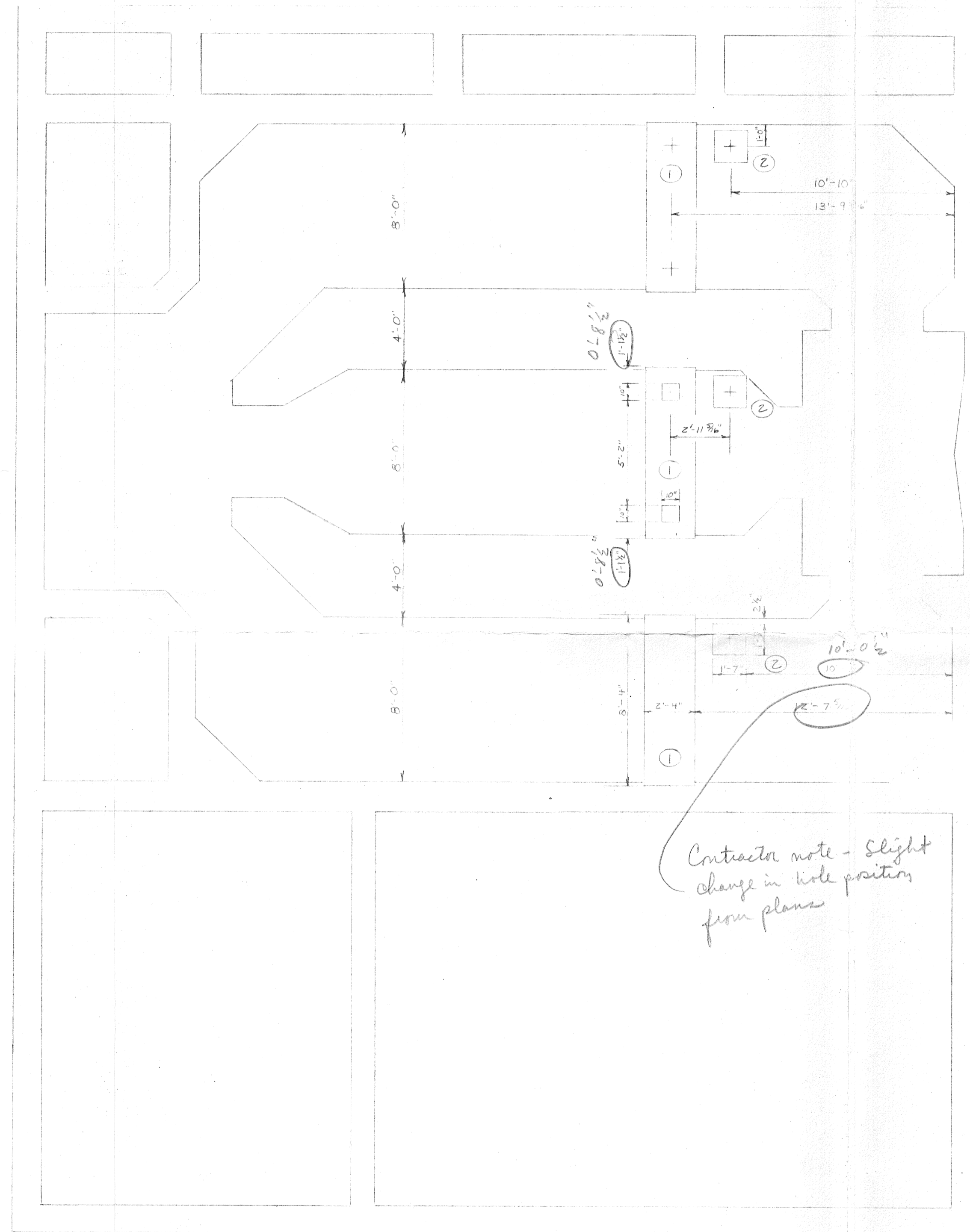
#35
34

REVISION	DATE

HARRIS MECHANICAL CONTRACTING COMPANY
 2300 TERRITORIAL ROAD • ST. PAUL, MINNESOTA 55114 • PHONE 612-646-2911



TITLE	DATE	SHEET
C.S.O. TREATMENT FACILITIES	6-2-77	M-1
SUPERIOR WISC.	JOB NO. 67047	
GRATING & VALVE ACCESS DOOR LOCATIONS	DRAWN BY J. M.	



Contractor note - slight change in hole position from plans

Requires change from 4-18-77 approval

ITEM #1 ALUM. GRATINGS & FRAMES FURNISHED BY C.W. OLSON CO. INC. MEASUREMENTS CORRESPOND WITH C.W. OLSON'S DRAWING NO. 5 # HARRIS MECH. PIPING DRAWING P-1

ITEM #2 NEENAH ACCESS DOOR # R-6660 DH FURNISHED BY C.W. OLSON CO. INC. MEASUREMENTS CORRESPOND WITH C.W. OLSON'S DRAWING NO. 17 # HARRIS MECH. PIPING DRAWING P-1

SHOP DRAWING REVIEW
 NO EXCEPTIONS TAKEN
 MAKE NOTED CORRECTIONS
 AMEND AND RE-submit
 TITRADO, ROSENE, ANDERLIK
 & ASSOCIATES, INC.
 6/11/77 RST

#37
 37

REVISION	DATE

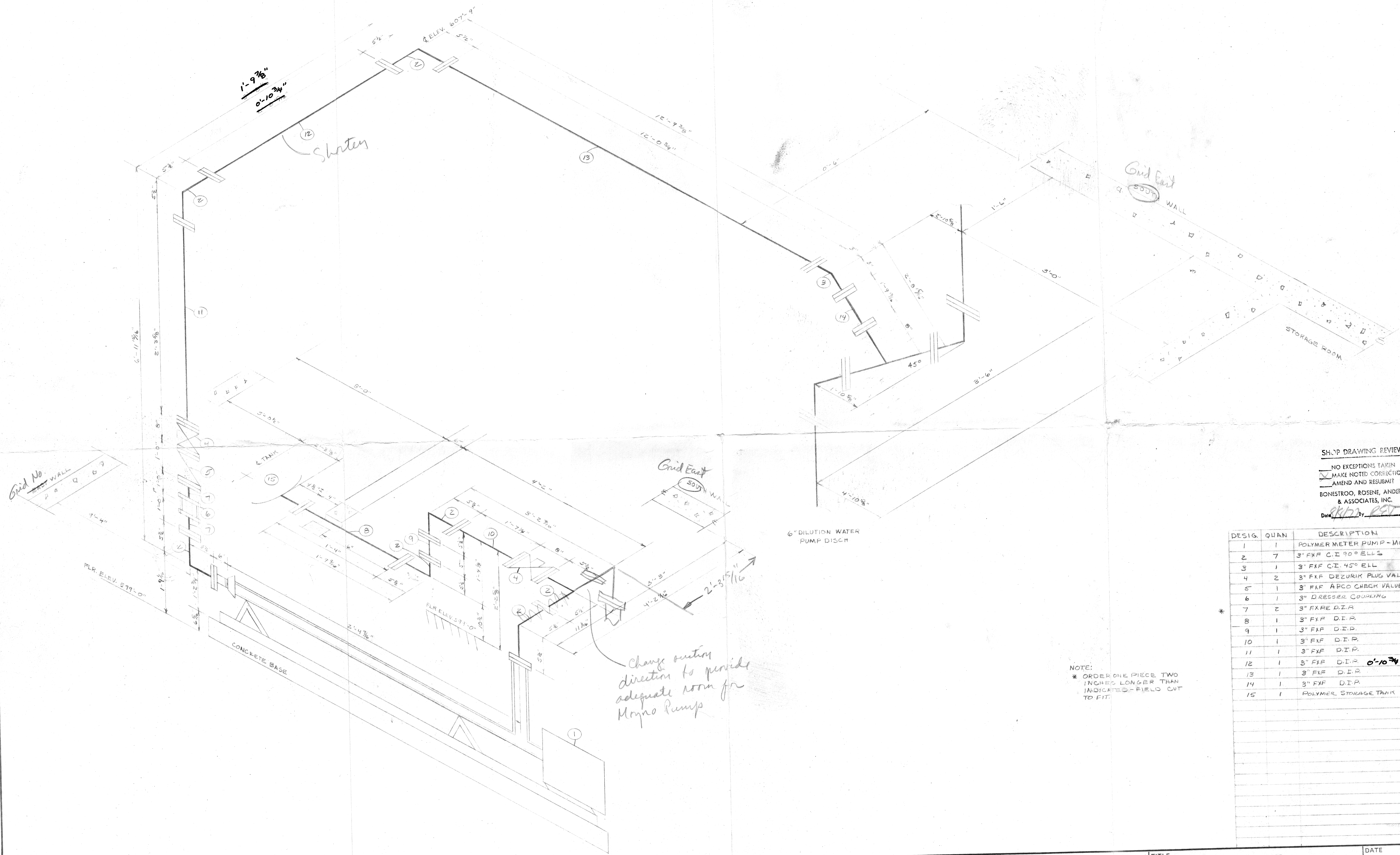
HARRIS MECHANICAL CONTRACTING COMPANY
 2300 TERRITORIAL ROAD • ST. PAUL, MINNESOTA 55114 • PHONE 612-646-2911



TITLE C.S.O. TREATMENT FACILITIES
 SUPERIOR WISC.
 GRATING & VALVE ACCESS DOOR LOCATIONS

DATE 6-2-77
 JOB NO. 67047
 DRAWN BY J. M.

SHEET M-1



SHOP DRAWING REVIEW
 NO EXCEPTIONS TAKEN
 MAKE NOTED CORRECTIONS
 AMEND AND RESUBMIT
 BONESTROO, ROSENE, ANDERLIK
 & ASSOCIATES, INC.
 Date 8/1/77 By [Signature]

DESIG.	QUAN	DESCRIPTION	LENGTH
1	1	POLYMER METER PUMP - MOYNO	
2	7	3" FxF C.I. 90° ELLS	
3	1	3" FxF C.I. 45° ELL	
4	2	3" FxF DEZURIK PLUG VALVES	
5	1	3" FxF APCO CHECK VALVE	
6	1	3" DRESSER COUPLING	
7	2	3" FxF D.I.P.	1'-0"
8	1	3" FxF D.I.P.	1'-4"
9	1	3" FxF D.I.P.	0'-5"
10	1	3" FxF D.I.P.	1'-7 1/4"
11	1	3" FxF D.I.P.	2'-3 3/8"
12	1	3" FxF D.I.P. <i>0'-10 3/4"</i>	0'-10 3/4"
13	1	3" FxF D.I.P.	12'-0 3/4"
14	1	3" FxF D.I.P.	1'-9 1/16"
15	1	POLYMER STORAGE TANK	BY OTHERS

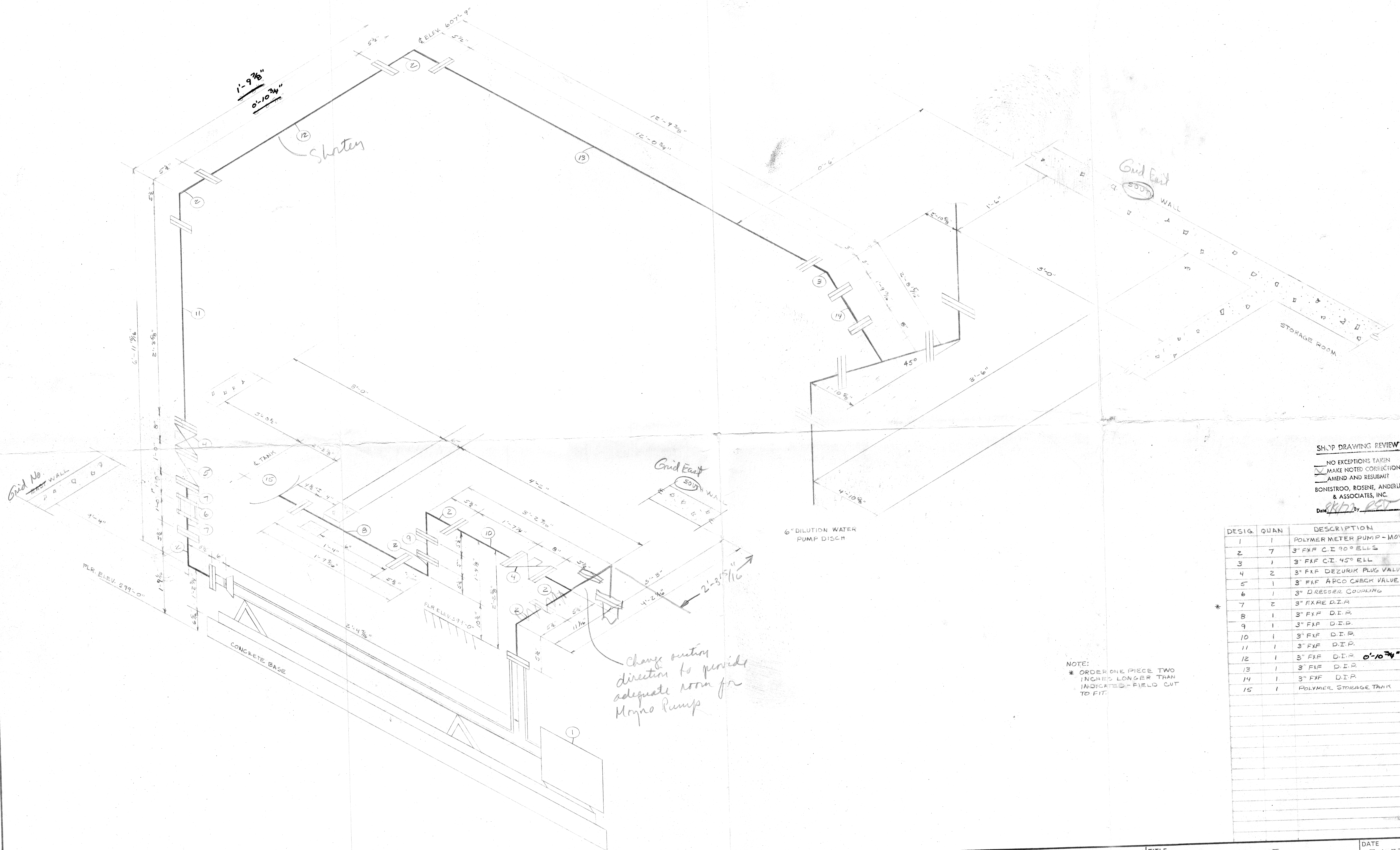
NOTE:
 * ORDER ONE PIECE TWO INCHES LONGER THAN INDICATED - FIELD CUT TO FIT.

Change outlet direction to provide adequate room for Moyno Pump

REVISION	DATE

HARRIS MECHANICAL CONTRACTING COMPANY
 100 TERRITORIAL ROAD • ST. PAUL, MINNESOTA 55114 • PHONE 612-646-2911

TITLE C.S.O. TREATMENT FACILITIES
 SUPERIOR WISC.
 POLYMER METER PUMP PIPING
 DATE 7-1-77
 JOB NO. 67047
 DRAWN BY J. M.
 SHEET #33
 P-2



SHOP DRAWING REVIEW
 NO EXCEPTIONS TAKEN
 MAKE NOTED CORRECTIONS
 AMEND AND RESUBMIT
 BONESTROO, ROSENE, ANDERLUK
 & ASSOCIATES, INC.
 Date: 7/1/77 By: J.M.

DESIG.	QUAN.	DESCRIPTION	LENGTH
1	1	POLYMER METER PUMP - MOyno	
2	7	3" FxF C.I. 90° ELLS	
3	1	3" FxF C.I. 45° ELL	
4	2	3" FxF DEZURIK PLUG VALVES	
5	1	3" FxF APCO CHECK VALVE	
6	1	3" DRESSER COUPLING	
7	2	3" FxF D.I.P.	1'-0"
8	1	3" FxF D.I.P.	1'-4"
9	1	3" FxF D.I.P.	0'-5"
10	1	3" FxF D.I.P.	1'-7 1/2"
11	1	3" FxF D.I.P.	2'-3 3/8"
12	1	3" FxF D.I.P. 0'-10 3/4"	0'-10 3/4"
13	1	3" FxF D.I.P.	12'-0 3/4"
14	1	3" FxF D.I.P.	1'-9 1/16"
15	1	POLYMER STORAGE TANK	BY OTHERS

NOTE:
 * ORDER ONE PIECE TWO INCHES LONGER THAN INDICATED - FIELD CUT TO FIT.

Change outflow direction to provide adequate room for Moyno Pump

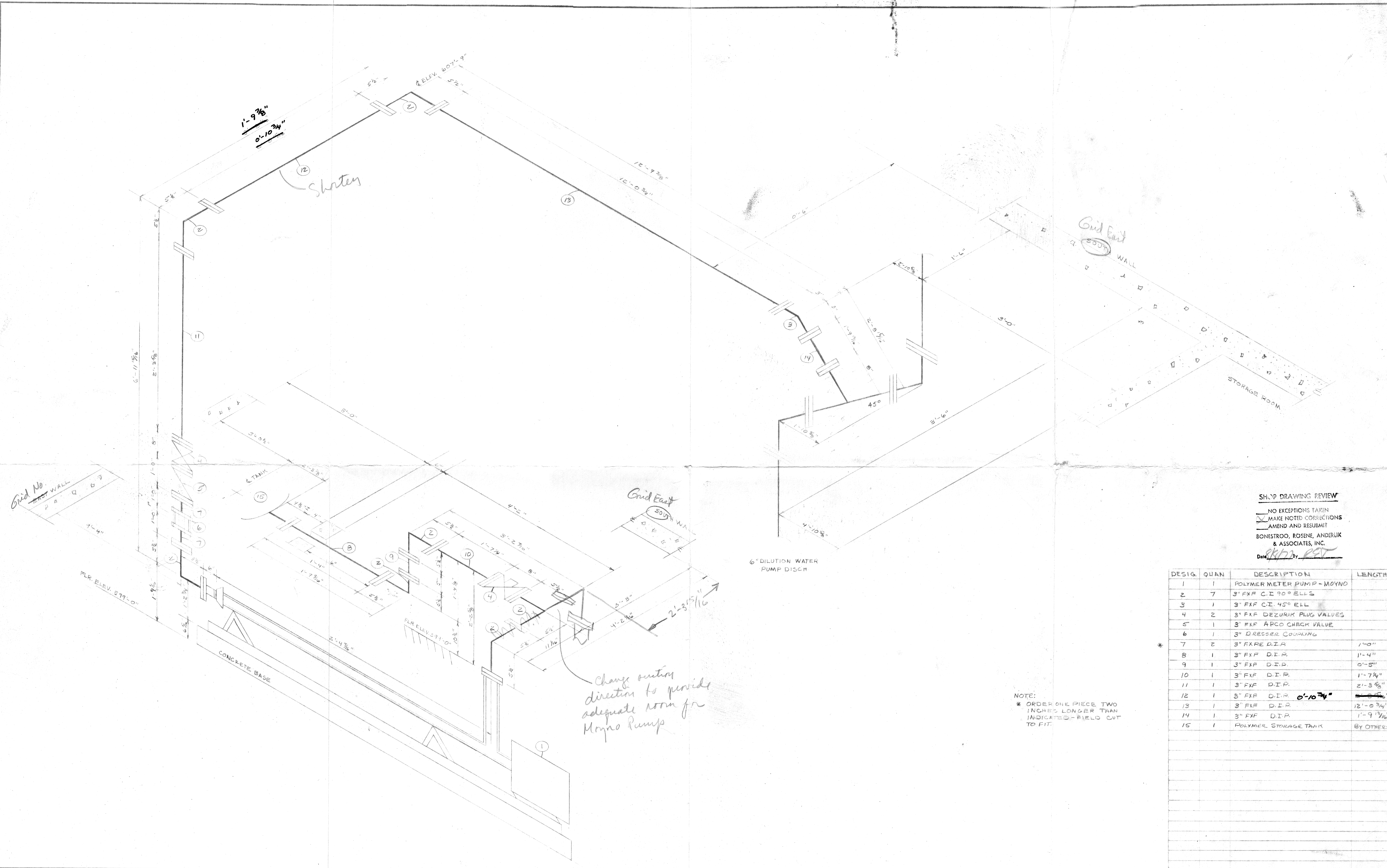
REVISION	DATE

HARRIS MECHANICAL CONTRACTING COMPANY
 100 TERRITORIAL ROAD • ST. PAUL, MINNESOTA 55114 • PHONE 612-646-2911



TITLE C.S.O. TREATMENT FACILITIES
 SUPERIOR WISC.
 POLYMER METER PUMP PIPING

DATE 7-1-77
 JOB NO. 67047
 DRAWN BY J.M.
 SHEET #33
 P-2



SHOP DRAWING REVIEW
 NO EXCEPTIONS TAKEN
 MAKE NOTED CORRECTIONS
 AMEND AND RESUBMIT
 BONESTROO, ROSENE, ANDERLIK
 & ASSOCIATES, INC.
 Date *8/10/77* By *RSW*

DESIG.	QUAN	DESCRIPTION	LENGTH
1	1	POLYMER METER PUMP - MOYNO	
2	7	3" F X F C.I. 90° ELLS	
3	1	3" F X F C.I. 45° ELL	
4	2	3" F X F DEZURIK PLUG VALVES	
5	1	3" F X F APCO CHECK VALVE	
6	1	3" DRESSER COUPLING	
* 7	2	3" F X F D.I.P.	1'-0"
8	1	3" F X F D.I.P.	1'-4"
9	1	3" F X F D.I.P.	0'-5"
10	1	3" F X F D.I.P.	1'-7 1/4"
11	1	3" F X F D.I.P.	2'-3 5/8"
12	1	3" F X F D.I.P. <i>0'-10 3/4"</i>	0'-10 3/4"
13	1	3" F X F D.I.P.	12'-0 3/4"
14	1	3" F X F D.I.P.	1'-9 1/16"
15	1	POLYMER STORAGE TANK	BY OTHERS

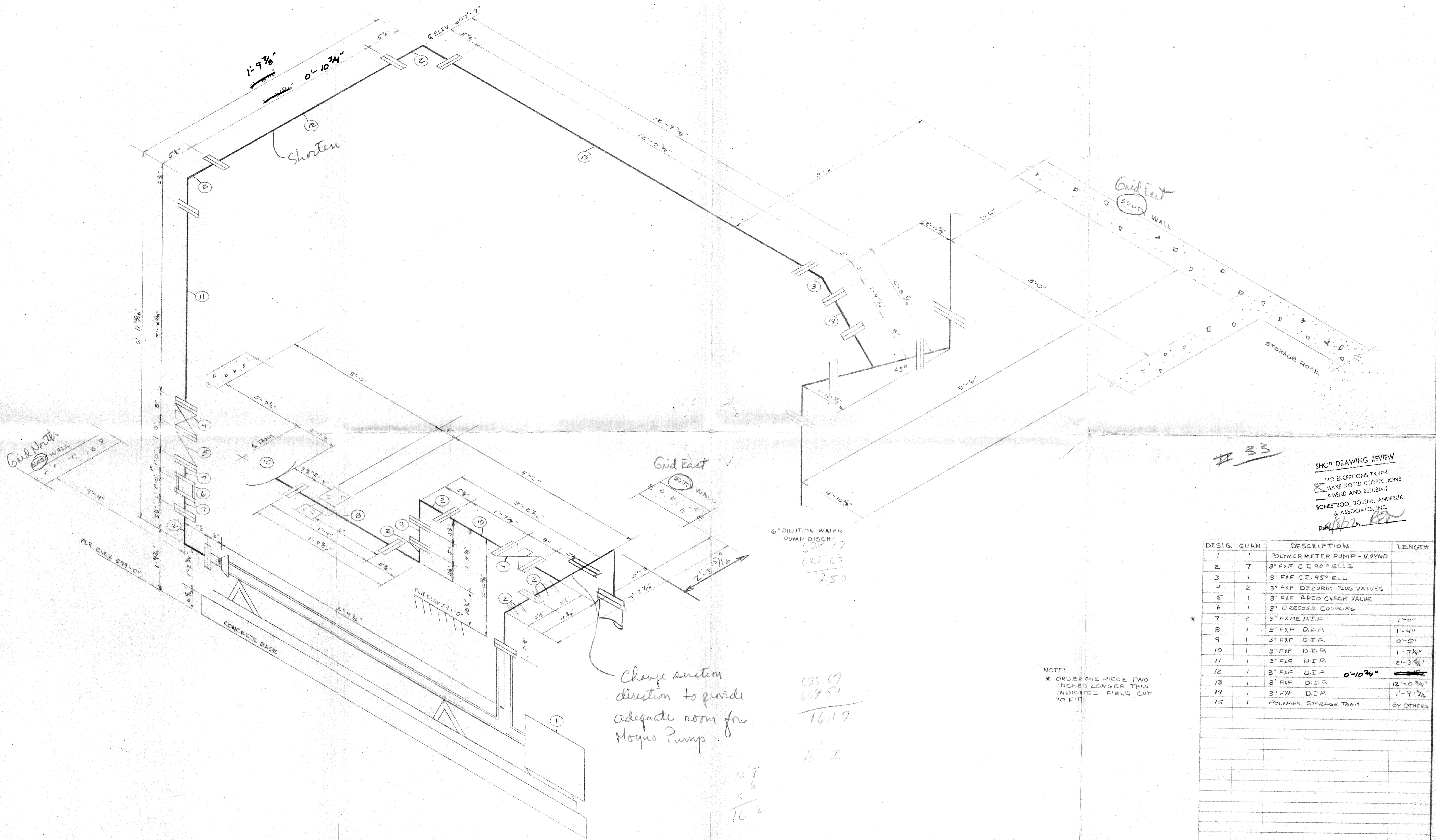
NOTE:
 * ORDER ONE PIECE TWO INCHES LONGER THAN INDICATED - FIELD CUT TO FIT.

Change outlet direction to provide adequate room for Moyno Pump

REVISION	DATE

HARRIS MECHANICAL CONTRACTING COMPANY
 100 TERRITORIAL ROAD • ST. PAUL, MINNESOTA 55114 • PHONE 612-646-2911

TITLE C.S.O. TREATMENT FACILITIES SUPERIOR WISC. POLYMER METER PUMP PIPING	DATE 7-1-77	SHEET #33 P-2
	JOB NO. 67047	DRAWN BY J. M.



33

SHOP DRAWING REVIEW
 NO EXCEPTIONS TAKEN
 MAKE NOTED CORRECTIONS
 AMEND AND RESUBMIT
 BONESTROO, ROSENE, ANDERLIK
 & ASSOCIATES, INC.
 Date 1/17/77 by [Signature]

DESIG.	QUAN	DESCRIPTION	LENGTH
1	1	POLYMER METER PUMP - MOYNO	
2	7	3" F X F C.I. 90° ELLS	
3	1	3" F X F C.I. 45° ELL	
4	2	3" F X F DEZURIK PLUG VALVES	
5	1	3" F X F APCO CHECK VALVE	
6	1	3" DRESSER COUPLING	
7	2	3" F X F D.I.A.	1'-0"
8	1	3" F X F D.I.P.	1'-4"
9	1	3" F X F D.I.P.	0'-5"
10	1	3" F X F D.I.P.	1'-7 1/4"
11	1	3" F X F D.I.P.	2'-3 5/8"
12	1	3" F X F D.I.P. 0'-10 3/4"	12'-0 3/4"
13	1	3" F X F D.I.P.	12'-0 3/4"
14	1	3" F X F D.I.P.	1'-9 1/16"
15	1	POLYMER STORAGE TANK	BY OTHERS

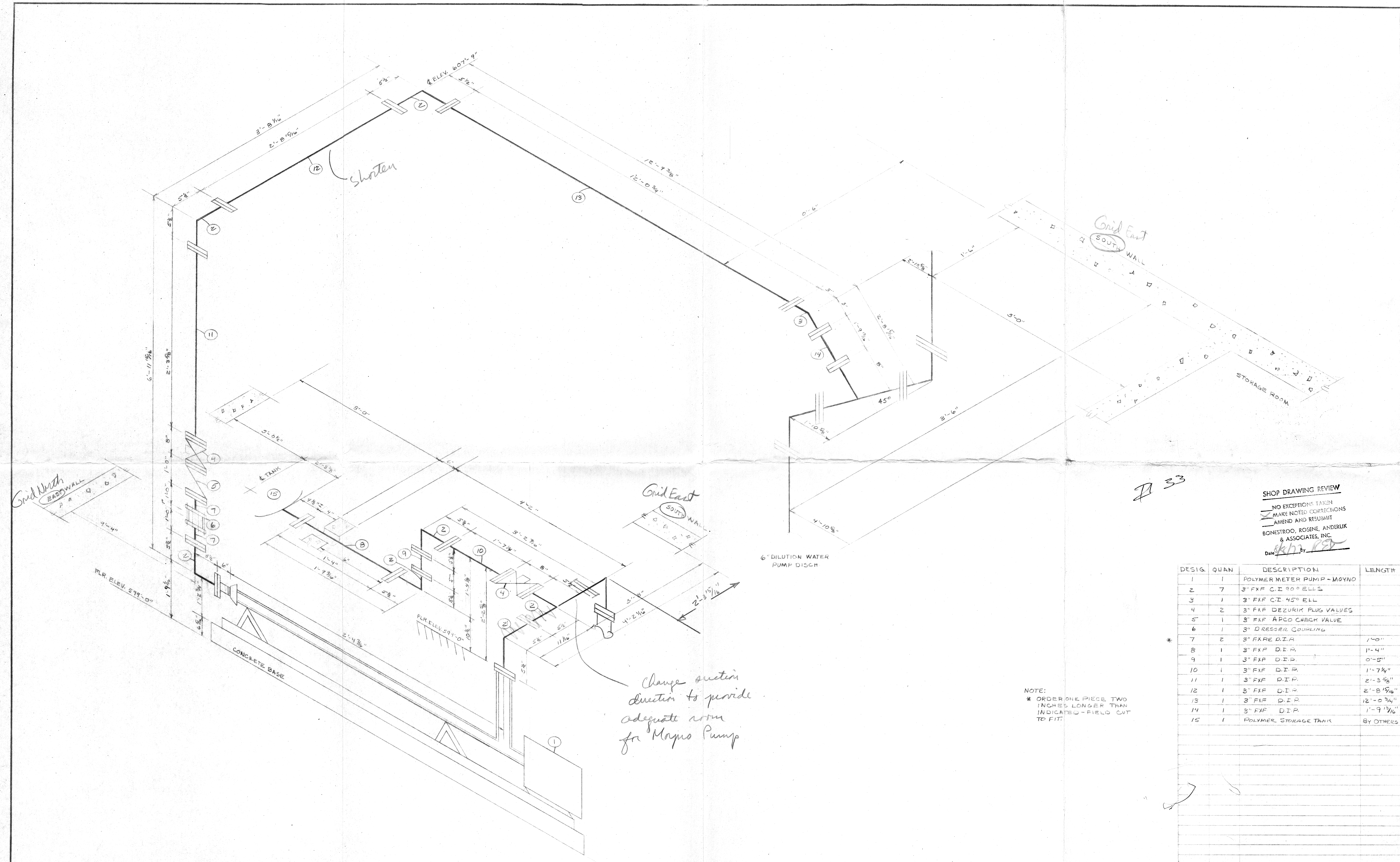
NOTE:
 * ORDER ONE PIECE TWO INCHES LONGER THAN INDICATED - FIELD CUT TO FIT

Change suction direction to provide adequate room for Moyno Pump.

6" DILUTION WATER PUMP DISCH.
 628.17
 625.67
 2.50

625.67
 609.50
 16.17
 16' 2"

10' 8"
 6
 5
 16' 2"



shorten

Change section direction to provide adequate room for Moyno Pump

33

SHOP DRAWING REVIEW
 NO EXCEPTIONS TAKEN
 MAKE NOTED CORRECTIONS
 AMEND AND RESUBMIT
 BONESTROO, ROSENE, ANDERLIK
 & ASSOCIATES, INC.
 Date *skb* By *RS*

DESIG.	QUAN.	DESCRIPTION	LENGTH
1	1	POLYMER METER PUMP - MOYNO	
2	7	3" FXF C.I. 90° ELLS	
3	1	3" FXF C.I. 45° ELL	
4	2	3" FXF DEZURIK PLUG VALVES	
5	1	3" FXF APCO CHECK VALVE	
6	1	3" DRESSER COUPLING	
* 7	2	3" FXF D.I.P.	1'-0"
8	1	3" FXF D.I.P.	1'-4"
9	1	3" FXF D.I.P.	0'-5"
10	1	3" FXF D.I.P.	1'-7 1/2"
11	1	3" FXF D.I.P.	2'-3 3/8"
12	1	3" FXF D.I.P.	2'-8 15/16"
13	1	3" FXF D.I.P.	12'-0 3/4"
14	1	3" FXF D.I.P.	1'-9 13/16"
15	1	POLYMER STORAGE TANK	BY OTHERS

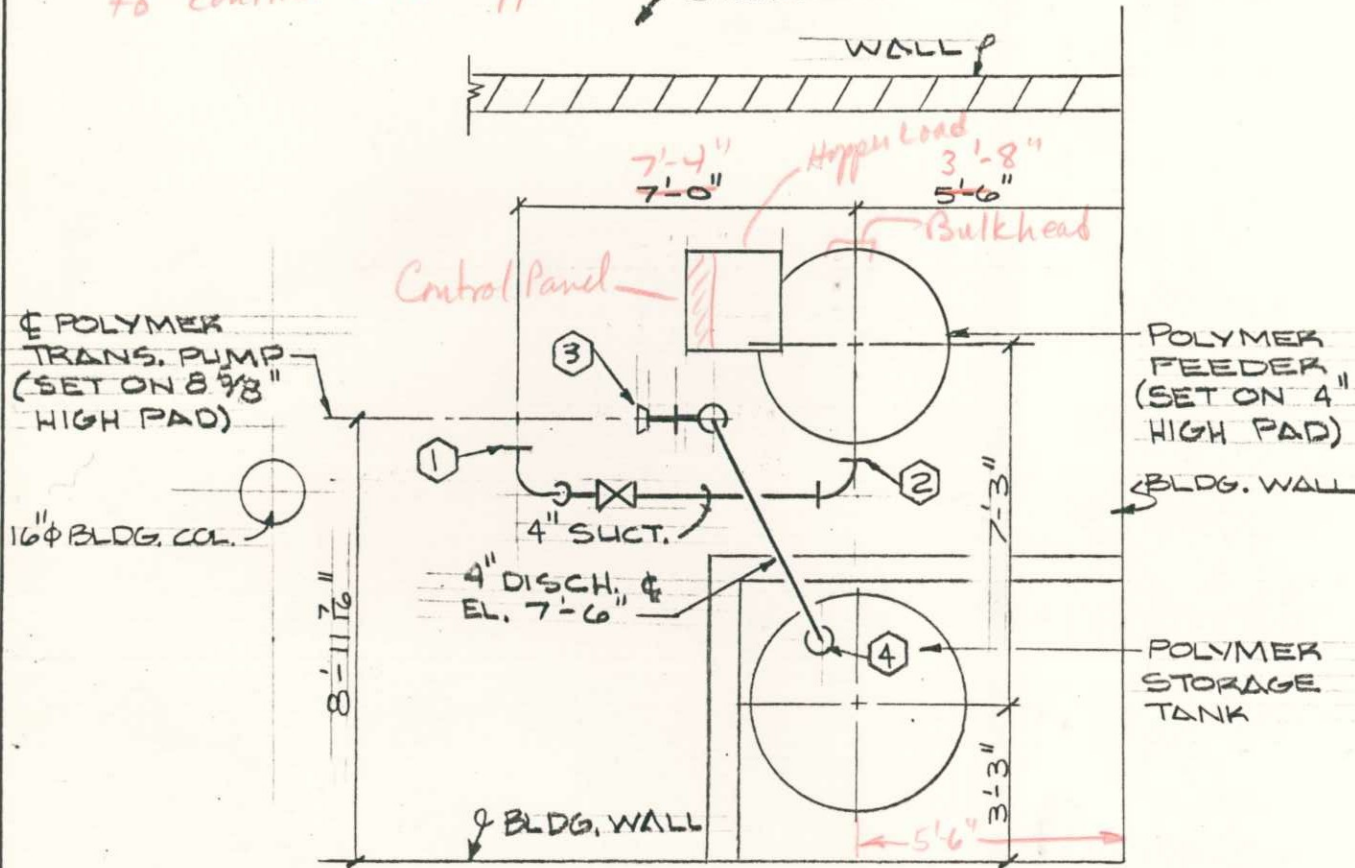
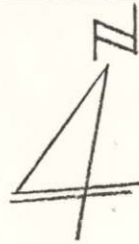
NOTE:
 * ORDER ONE PIECE TWO INCHES LONGER THAN INDICATED - FIELD CUT TO FIT.

REVISION	DATE

HARRIS MECHANICAL CONTRACTING COMPANY
 100 TERRITORIAL ROAD • ST. PAUL, MINNESOTA 55114 • PHONE 612-646-2911

TITLE C.S.O. TREATMENT FACILITIES SUPERIOR WISC. POLYMER METER PUMP PIPING	DATE 7-1-77 JOB NO. 67047 DRAWN BY J. M.	SHEET P-2
---	---	--------------

Notes: Water connections to be made so as not to conflict with hopper loading



ITEM NO.	DESCRIPTION
A	
B	
C	
D	
E	
F	
G	
H	
PIPE	SCH-
PIPE	SCH-

NO. REQUIRED _____

MARK

ABBREVIATIONS

- | | |
|---------------|------------------------------|
| TE-Thread End | FW-Fit-up extra pipe allowed |
| PE-Plain End | TW-Tack weld only |
| BE-Bevel End | WF-Wire flange to spool |

NOTES:

1. All elbows are long radius unless otherwise indicated.
2. Bolt holes straddle ϕ unless otherwise indicated.
- 3.

LOCATION PLAN POLYMER TRANS. PUMP & TANKS
SCALE: 1/4" = 1'-0"

HARRIS MECHANICAL Contracting Co.
2300 TERRITORIAL RD. • ST. PAUL, MINN. 55114



JOB: C.S.O. - SUPERIOR WISC
JOB NO. 67047
PHASE NO. P-6A

DRAWN BY JRO DATE 1-31-78
CHKD BY _____ DATE _____
MATERIAL SLIP
SHEET NO. 2 OF 2

NOTE:

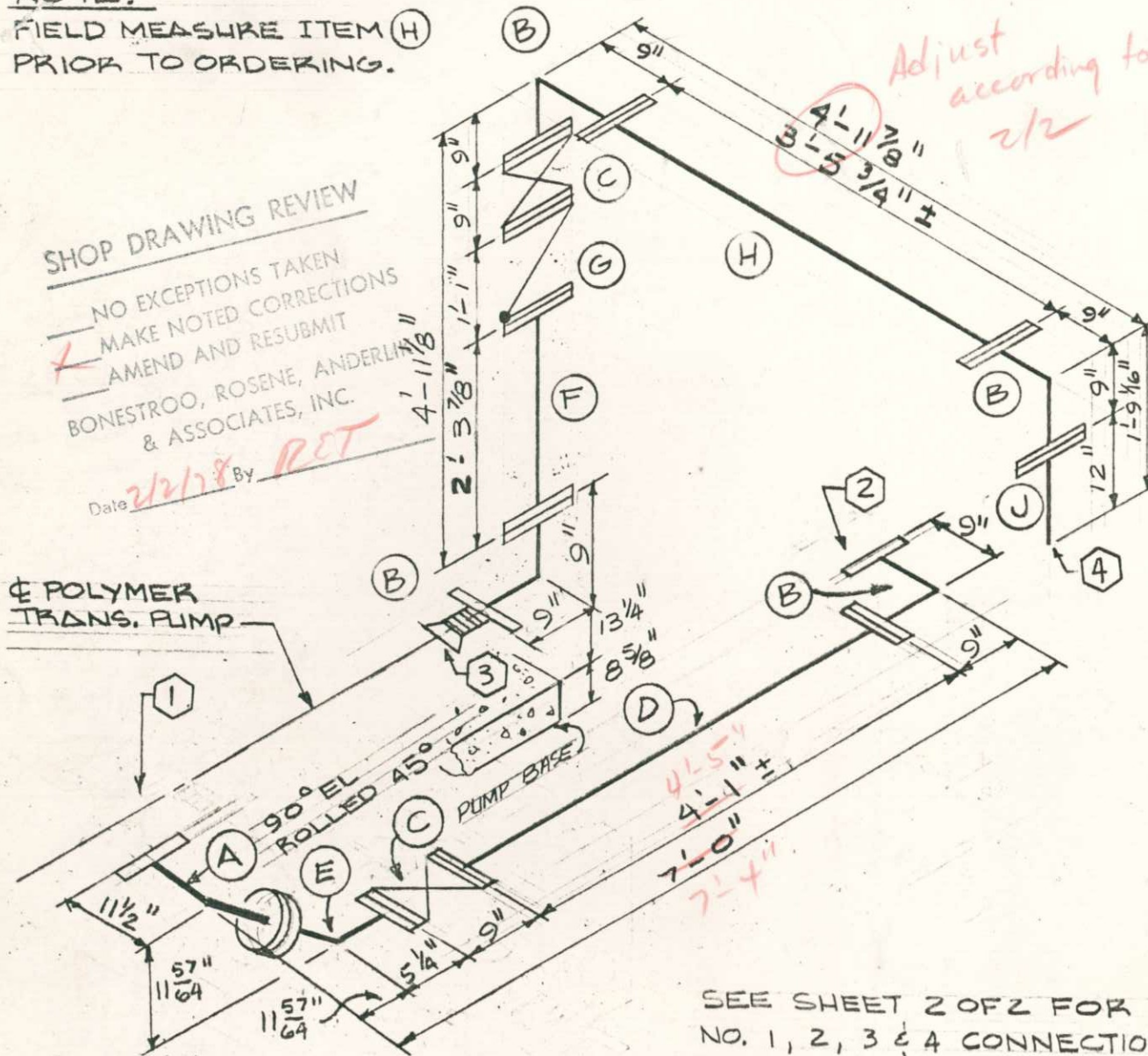
FIELD MEASURE ITEM (H)
PRIOR TO ORDERING.

SHOP DRAWING REVIEW

NO EXCEPTIONS TAKEN
MAKE NOTED CORRECTIONS
AMEND AND RESUBMIT
BONESTROO, ROSENE, ANDERLIN
& ASSOCIATES, INC.

Date 2/2/78 By RET

☺ POLYMER
TRANS. PUMP



SEE SHEET 2 OF 2 FOR
NO. 1, 2, 3 & 4 CONNECTION
POINTS.

ITEM NO.	DESCRIPTION
A	1 6"x4" Fx F D.I.P. 90° RED. EL.
B	4 4" Fx F D.I.P. 90° ELL.
C	2 4" FLG. ECC. PLUG VA.
D	1 4" Fx F D.I.P. 4'-1" ± L.G.
E	1 4" Fx F D.I.P. 45° EL.
F	1 4" Fx F D.I.P. 2'-3 7/8" LG.
G	1 4" FLG. SWING CHECK VA.
H	1 4" Fx F D.I.P. (SEE NOTE)
J	1 4" Fx P.E. D.I.P. 1'-0" LG.

PIPE	SCH-
PIPE	SCH-

NO. REQUIRED _____

MARK

II 20

ABBREVIATIONS

TE-Thread End	FW-Fit-up extra
PE-Plain End	pipe allowed
BE-Bevel End	TW-Tack weld only
FW-Field Weld	WF-Wire flange to
	spool

NOTES:

- All elbows are long radius unless otherwise indicated.
- Bolt holes straddle ϕ unless otherwise indicated.
-

HARRIS MECHANICAL
Contracting Co.

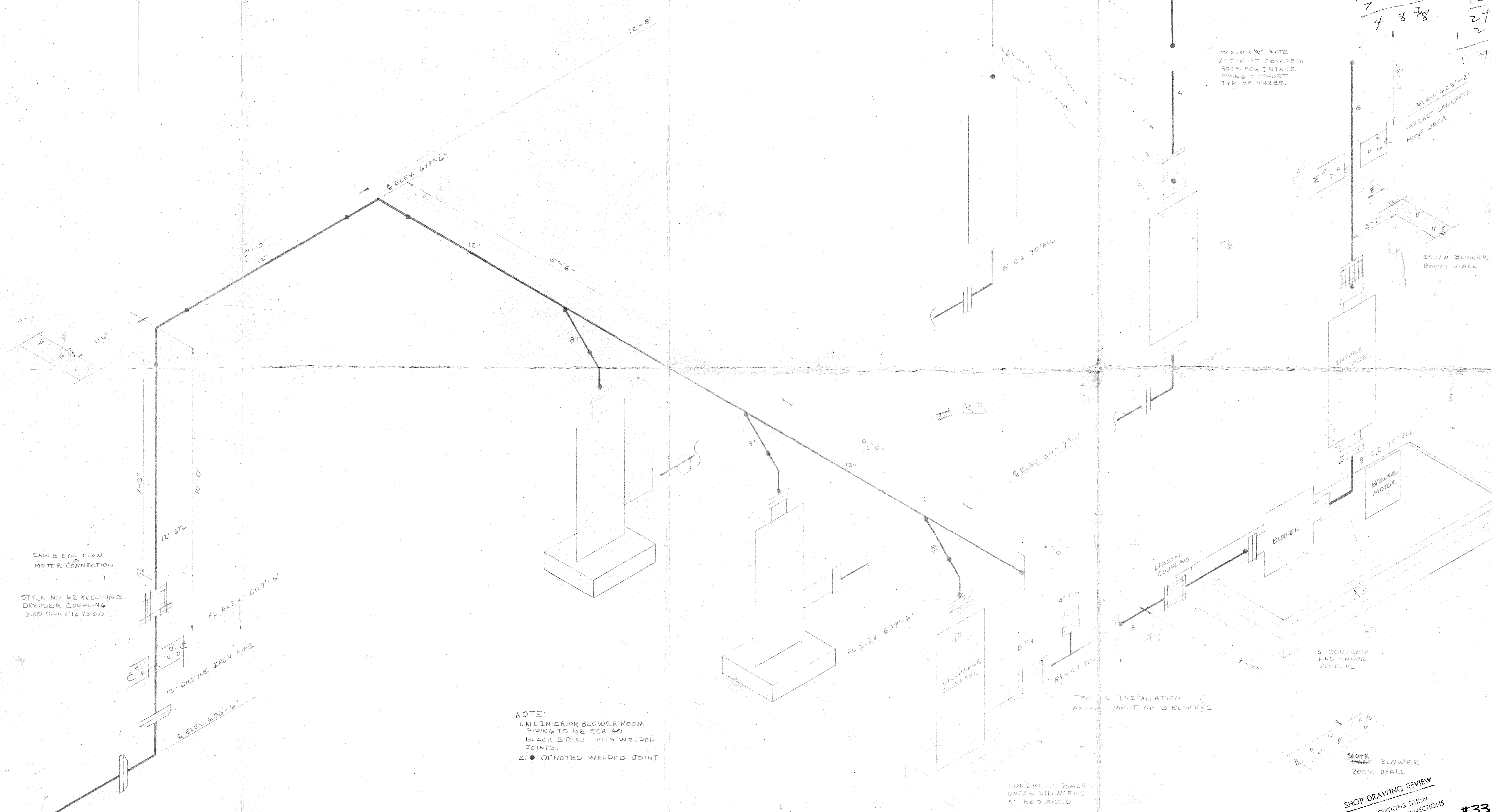
2300 TERRITORIAL RD. • ST. PAUL, MINN. 55114



JOB: C.S.O. - SUPERIOR WISC.

JOB NO. 67047
PHASE NO. P-6

DRAWN BY JRO DATE 1-31-78
CHKD BY _____ DATE _____
MAT'L SLIP _____
SHEET NO. 1 OF 2



26 1/2
 18 5/8
 4 7/8
 2 1/2
 51 9/8
 47 9/8
 15 2
 13 9/8
 13 1/8
 3 1/8
 51 7/8
 139 7/8
 78" F-E
 20
 12 8 5/8
 7 11 7/8
 4 8 3/8
 12
 12
 24
 12
 1 1/4

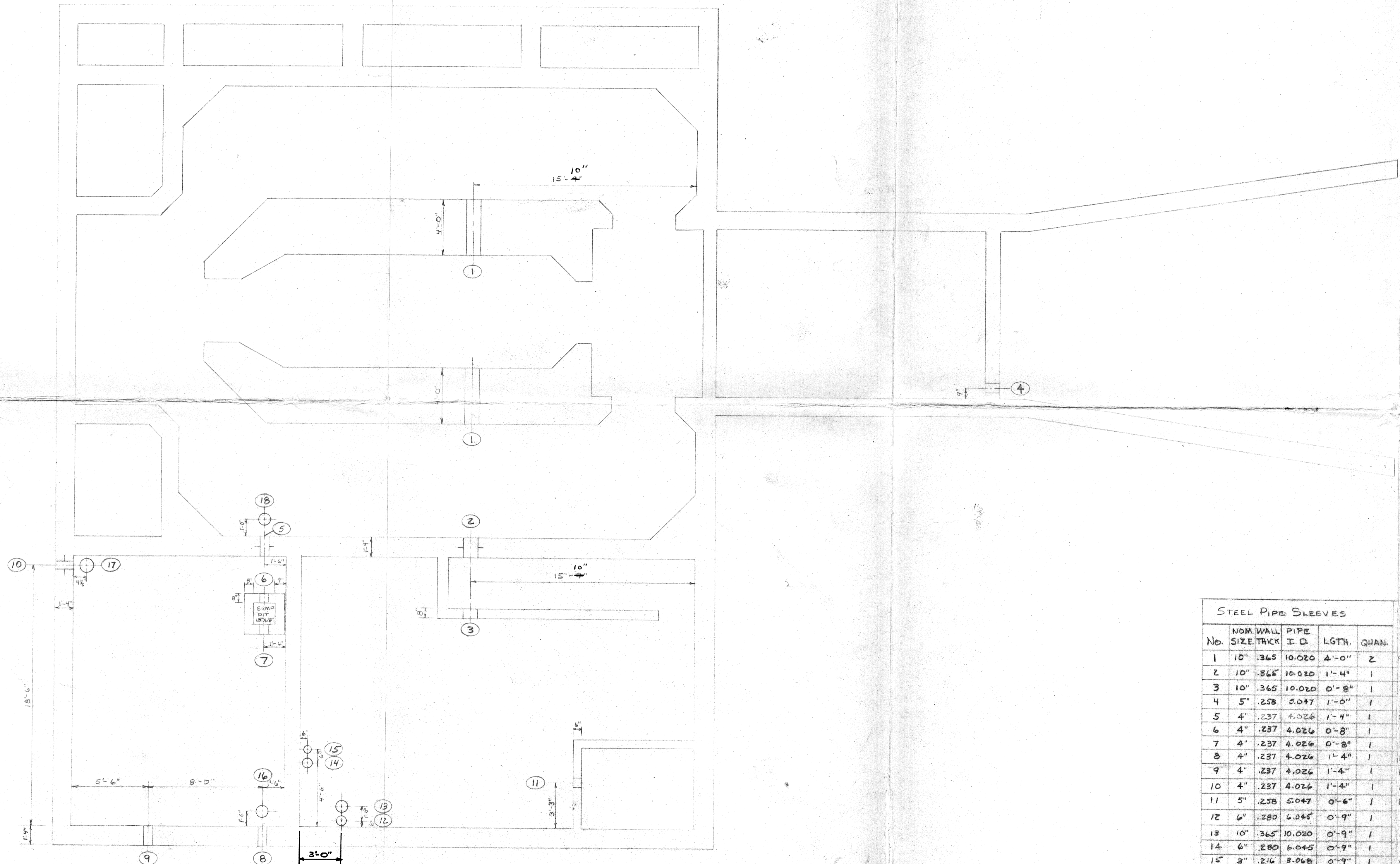
EAGLE EYE FLOW
 METER CONNECTION
 STYLE NO. 62 REDUCING
 DRESSER COUPLING
 13.20 O.D. X 12.75 O.D.
 12" DUCTILE IRON PIPE
 FL ELEV. 609'-6"
 ELEV. 606'-6"

NOTE:
 1. ALL INTERIOR BLOWER ROOM
 PIPING TO BE SCH 40
 BLACK STEEL WITH WELDED
 JOINTS.
 2. ● DENOTES WELDED JOINT

20" X 20" X 1/4" PLATE
 AT TOP OF CONCRETE
 ROOF FOR INTAKE
 PIPING SUPPORT
 TYP. OF THREE
 ELEV. 623'-2"
 PRECAST CONCRETE
 ROOF DECK
 SOUTH BLOWER
 ROOM WALL

8" C.I. 90° ELL
 INTAKE
 SILENCER
 8" C.I. 90° ELL
 BLOWER
 MOTOR
 6" CONCRETE
 PAD UNDER
 BLOWER
 DISCHARGE
 SILENCER
 6" C.I. 90° ELL
 TYPICAL INSTALLATION
 ARRANGEMENT OF 3 BLOWERS
 CONCRETE BASES
 UNDER SILENCERS
 AS REQUIRED
 SOUTH BLOWER
 ROOM WALL

SHOP DRAWING REVIEW
 NO EXCEPTIONS TAKEN
 MAKE NOTED CORRECTIONS
 AMEND AND RESUBMIT
 ARMSTRONG, ROSENE, ANDERLIK
 & ASSOCIATES, INC.
 DATE 11/16/77
 SHEET #33



609 6
602 2
7 4

#93

SHOP DRAWING REVIEW
 NO EXCEPTIONS TAKEN
 MAKE NOTED CORRECTIONS
 AMEND AND RESUBMIT
 BONESTROO, ROSENE, ANDERLUK
 & ASSOCIATES, INC.
 4-25-77 by MJC

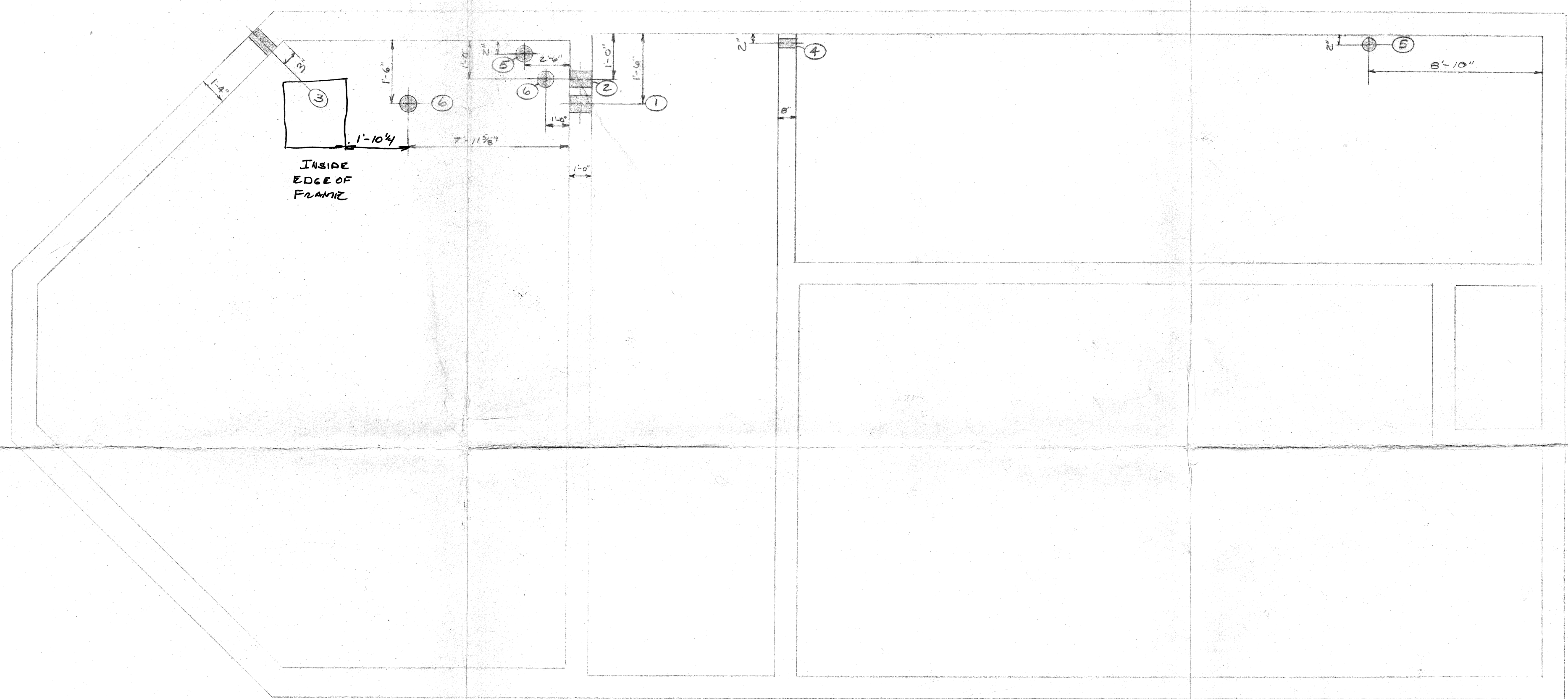
2 LINK SEALS REQUIRED
ON EACH SLEEVE

STEEL PIPE SLEEVES					SYSTEM	CARRIER		LINK SEAL		ELEV.	REMARKS		
No.	NOM. WALL SIZE	PIPE I. D.	LGTH.	QUAN.		LINE SIZE	PIPE O. D.	SIZE	QUN. EA.			TOTAL	
1	10"	365	10.020	4'-0"	Z	POLY. DEWATERING	6" D.I.P.	6.90	LS400	7	14	607'-9"	
2	10"	365	10.020	1'-4"	1	"	6" D.I.P.	6.90	LS400	7	7	607'-9"	WITH WATER STOP
3	10"	365	10.020	0'-8"	1	"	6" D.I.P.	6.90	NR			607'-9"	
4	5"	258	5.047	1'-0"	1	AIR LINE	3" STL	3.50	NR			607'-9"	
5	4"	237	4.026	1'-4"	1	SUMP PIT DRAIN	2" FIBER	2.375	LS300	6	6	608'-13/16"	WITH WATER STOP
6	4"	237	4.026	0'-8"	1	"	2" FIBER	2.375	LS300	6	6	608'-13/16"	"
7	4"	237	4.026	0'-8"	1	FeCl3 FILL DRAIN	2" FIBER	2.375	LS300	6	6	608'-5"	"
8	4"	237	4.026	1'-4"	1	FeCl3 FILL	2" FIBER	2.375	LS300	6	6	613'-0"	"
9	4"	237	4.026	1'-4"	1	FeCl3 VENT	2" FIBER	2.375	LS300	6	6	624'-9"	"
10	4"	237	4.026	1'-4"	1	FeCl3 DISCH TO MH#1	2" FIBER	2.375	LS300	6	6	602'-2"	WITH WATER STOP
11	5"	258	5.047	0'-6"	1	POLY. METER PUMP SUC	3" D.I.P.	3.960	LS200	12	12	399'-10 1/2"	
12	6"	280	6.045	0'-9"	1	AIR LINE	4" STL	4.50	NR			609'-6"	FLOOR SLEEVE
13	10"	365	10.020	0'-9"	1	DILUTED POLYMER	6" D.I.P.	6.90	NR			609'-6"	"
14	6"	280	6.045	0'-9"	1	BLOWER SUCTION	4" STL	4.50	NR			609'-6"	"
15	3"	216	2.068	0'-9"	1	VAC. PUMP SUC. LINE	1" STL	1.315	NR			609'-6"	"
16	4"	237	4.026	0'-9"	1	FeCl3 FILL DRAIN	2" FIBER	2.375	LS300	6	6	609'-6"	"
17	4"	237	4.026	0'-9"	Z	FeCl3 DISCH TO MH#1	2" FIBER	2.375	NR			613'-0"	"
18				0'-8"	1	VALVE HANDLE EXT.						609'-6"	VALVE BOX

MEAS. 15'-9" CHANGED TO 15'-10" - AS PER JERRY M. PHONE CONVER.
 7-1-77
 REVISION _____ DATE _____

HARRIS MECHANICAL CONTRACTING COMPANY
 2300 TERRITORIAL ROAD • ST. PAUL, MINNESOTA 55114 • PHONE 612-646-2911

TITLE C.S.O. TREATMENT FACILITIES
 SUPERIOR, WISC
 SCREEN BLDG. SLEEVING
 DATE 4-5-77 SHEET 5-1
 JOB NO. 67047
 DRAWN BY J. M.



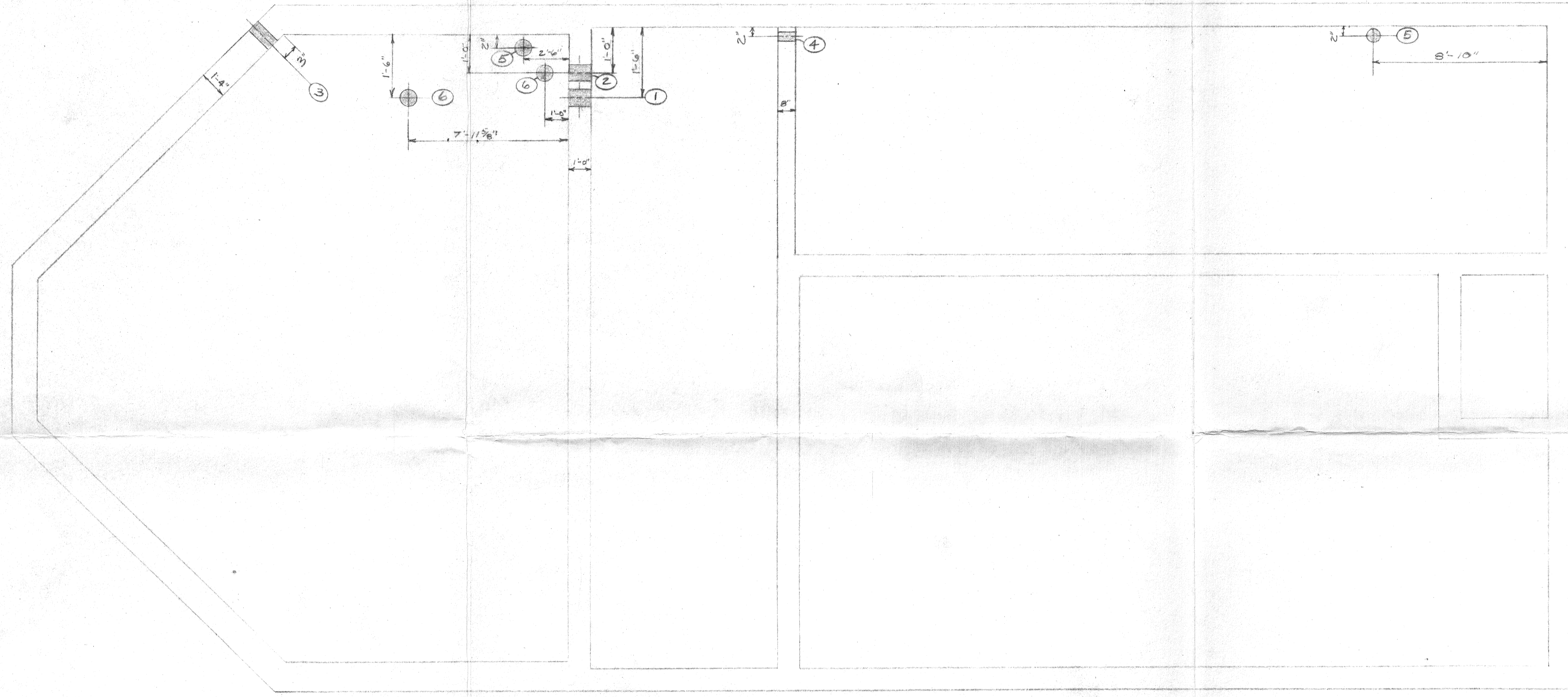
SHOP DRAWING REVIEW
 X NO EXCEPTIONS TAKEN
 MAKE NOTED CORRECTIONS
 AMEND AND RESUBMIT
 BONESTROG, ROSENE, ANDERLIK
 & ASSOCIATES, INC.
 Date: 5/24/77 By: R.E.V.

STEEL PIPE SLEEVES						CARRIER		LINK SEAL		LOCATION		REMARKS	
No.	NOM. SIZE	WALL THICK.	PIPE I.D.	LGTH.	QUAN.	LINE SIZE	PIPE O.D.	SIZE	QUAN. EA.	TOTAL	ELEV.		
1	12"	.375	12.000	1'-0"	1	DEWATER. PUMP DISCH.	8" D.I.R.	9.05D	LS 400	9	9	606'-8"	WITH WATER STOP
2	10"	.365	10.020	1'-0"	1	CHANNEL DRAIN	6" D.I.R.	6.90	LS 400	7	7	608'-4"	" " "
3	3"	.216	3.068	1'-4"	1	SAMPLE LINE	1 1/2" GALV.	1.90	LS 200	7	7	603'-6"	" " "
4	3"	.216	3.068	0'-8"	1	SAMPLE LINE	1 1/2" GALV.	1.90	NR			611'-6"	
5	3"	.216	3.068	0'-9"	2	SAMPLE LINE	1 1/2" GALV.	1.90	NR			609'-6"	
6				0'-8"	2	VALVES						609'-6"	VALVE BOXES

REVISION	DATE

HARRIS MECHANICAL CONTRACTING COMPANY
 2300 TERRITORIAL ROAD • ST. PAUL, MINNESOTA 55114 • PHONE 612-646-2911

TITLE	DATE	SHEET
C.S.O. TREATMENT FACILITIES	4-6-77	
SUPERIOR WISC	JOB NO.	5-2
PUMP & BLOWER BLDG SLEEVING	67047	
	DRAWN BY	J.M.



SHOP DRAWING REVIEW

- NO EXCEPTIONS TAKEN
- MAKE NOTED CORRECTIONS
- AMEND AND RESUBMIT

BONESTROO, ROSENE, ANDERLIK & ASSOCIATES, INC.

Date: 4/27/77. KED

STEEL PIPE SLEEVES						SYSTEM	CARRIER		LINK SEAL		LOCATION		REMARKS
No.	NOM SIZE	WALL THICK	PIPE I.D.	LGTH	QUAN.		LINE SIZE	PIPE O.D.	SIZE	QUAN. EA.	TOTAL	ELEV.	
1	12"	.375	12.00	1'-0"	1	DEWATER PUMP DISCH.	8" D.W.R.	9.05D	LS 400	9	9	606'-8"	WITH WATER STOP
2	10"	.365	10.020	1'-0"	1	CHANNEL DRAIN	6" D.I.A.	6.90	LS 400	7	7	603'-4"	" " "
3	3"	.216	3.068	1'-4"	1	SAMPLE LINE	1/2" GALV.	1.90	LS 200	7	7	603'-6"	" " "
4	3"	.216	3.068	0'-8"	1	SAMPLE LINE	1/2" GALV.	1.90	NR			611'-6"	
5	3"	.216	3.068	0'-9"	2	SAMPLE LINE	1/2" GALV.	1.90	NR			609'-6"	
6				0'-8"	2	VALVES						609'-6"	VALVE BOXES

REVISION	DATE

HARRIS MECHANICAL CONTRACTING COMPANY
 2300 TERRITORIAL ROAD • ST. PAUL, MINNESOTA 55114 • PHONE 612-646-2911

TITLE	DATE	SHEET
C.S.O. TREATMENT FACILITIES	4-6-77	
SUPERIOR WISC	JOB NO.	5-2
PUMP & BLOWER BLDG SLEEVING	67047	
	DRAWN BY	J. M.