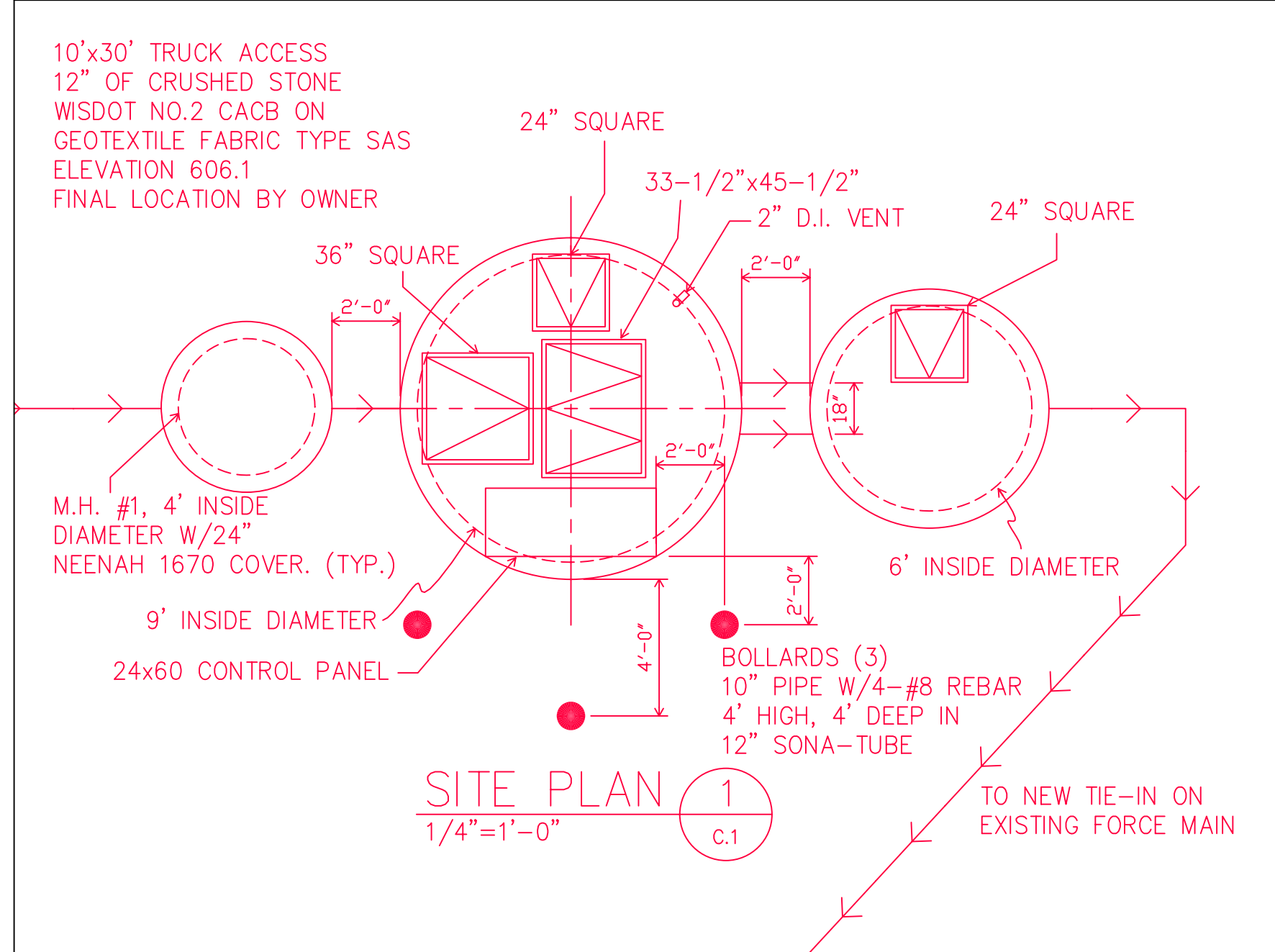
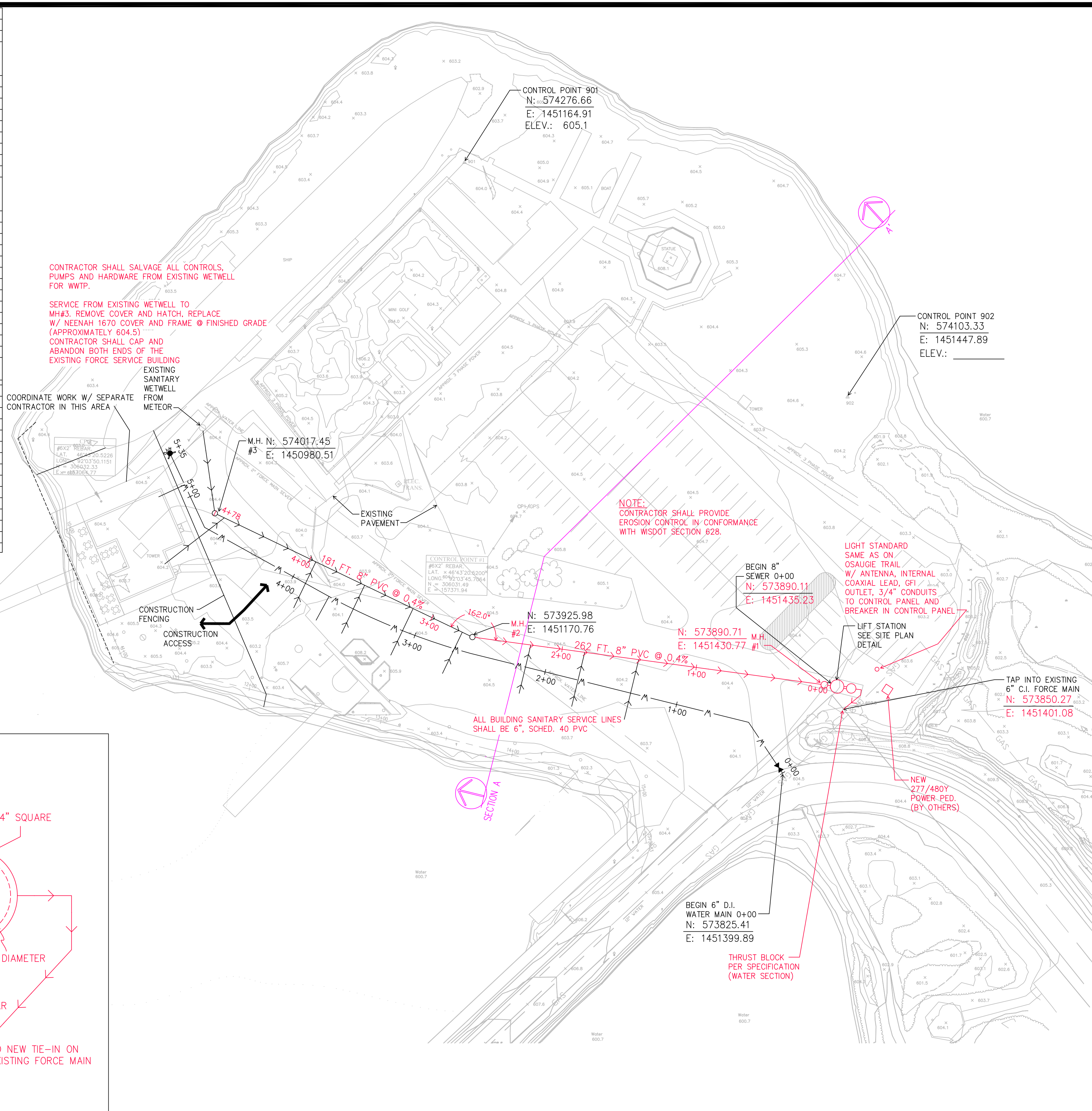


SURVEY DATA FOR SEWER & WATER SYSTEMS					
S/W	STATION	DESCRIPTION	INVERT	NORTHING	EASTING
S	00+00	LIFT STATION INLET	595.59	573890.11	1451435.23
S	00+04	MANHOLE #1 --- OUTLET	595.60	573890.71	1451430.77
		MANHOLE #1 --- INLET	595.70		
		MH #1 --- RIM ELEVATION	606.1		
S	01+43	SANITARY WYE	596.26	573909.32	1451293.60
S		SERVICE CROSSING WATER	598.88	573884.57	1451287.63
S		CAPPED END OF SERVICE		573865.13	1451282.94
S	01+83	SANITARY WYE	596.42	573914.72	1451253.76
S		SERVICE CROSSING WATER	598.88	573894.20	1451248.80
S		CAPPED END OF SERVICE		573874.76	1451244.11
S	02+23	SANITARY WYE	596.58	573920.12	1451213.91
S		SERVICE CROSSING WATER	598.88	573903.83	1451209.98
S		CAPPED END OF SERVICE		573884.38	1451205.29
S	02+67	MANHOLE #2 --- OUTLET	596.76	573925.98	1451170.76
		MANHOLE #2 --- INLET	596.86		
		MH #2 --- RIM ELEVATION	604.5		
S	02+75	SANITARY WYE	596.89	573929.57	1451163.28
S		SERVICE CROSSING WATER	598.88	573917.36	1451157.41
S		CAPPED END OF SERVICE		573899.13	1451148.64
S	03+15	SANITARY WYE	597.05	573947.03	1451126.98
S		SERVICE CROSSING WATER	598.88	573930.69	1451119.13
S		CAPPED END OF SERVICE		573912.62	1451110.44
S	03+55	SANITARY WYE	597.21	573970.05	1451091.23
S		SERVICE CROSSING WATER	598.88	573946.75	1451082.77
S		CAPPED END OF SERVICE		573928.72	1451074.10
S	03+95	SANITARY WYE	597.37	573981.58	1451055.13
S		SERVICE CROSSING WATER	598.88	573965.62	1451047.46
S		CAPPED END OF SERVICE		573947.56	1451038.78
S		SERVICE TO RESTAURANT		COORDINATE	W/ OWNER
S	04+78	MANHOLE #3---END OF MAIN	597.70	574017.45	1450980.51
S		MH #3 --- RIM ELEVATION	604.4		
W	00+00	BEGIN WATER MAIN	VERIFY	573825.41	1451399.89
W	00+45	PI LEFT -- 45 ELBOW	596.80	573862.96	1451374.79
W	01+35	CROSSING SEWER SERVICE	596.80	573884.57	1451287.63
W	01+75	CROSSING SEWER SERVICE	596.80	573894.20	1451248.80
W	02+15	CROSSING SEWER SERVICE	596.80	573903.83	1451209.98
W	02+69	CROSSING SEWER SERVICE	596.80	573917.36	1451157.41
W	03+10	CROSSING SEWER SERVICE	596.80	573930.69	1451119.13
W	03+50	CROSSING SEWER SERVICE	596.80	573946.75	1451082.77
W	03+70	SERVICE TEE	596.80	573956.00	1451064.83
W		CAPPED END OF SERVICE		573938.41	1451055.31
W	03+90	CROSSING SEWER SERVICE	596.80	573965.62	1451047.46
W	04+75	PI RIGHT -- 45 ELBOW	596.80	574007.05	1450972.93
W	05+09	SERVICE TEE	596.80	COORDINATE	W/ OWNER
W	05+35	END-HYDRANT ASSEMBLY	596.80	574061.80	1450947.34

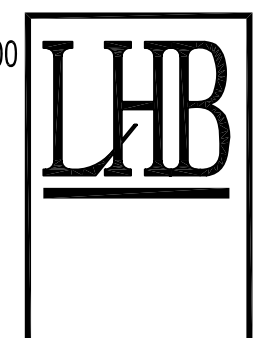


LHB ENGINEERS & ARCHITECTS
 DULUTH □ MINNEAPOLIS

21 W. Superior St., St. 500
 Duluth, MN 55802

TEL 612/338-2029
 FAX 612/338-2088

http://www.LHBcorp.com



CLIENT:
CITY OF SUPERIOR, WI

NO	DATE	REVISION
A	23 JUN 03	CHANGE ORDER

I HEREBY CERTIFY that this plan, specification or report was prepared by me or under my direct supervision and that I am a duly Licensed Professional Engineer under the laws of the State of Wisconsin.

SIGNATURE: Jay Bergman

TYPED OR PRINTED NAME:

DATE: 6/27/03 REG. NO.: 32653-006

COPYRIGHT 2003, LHB ENGINEERS & ARCHITECTS ALL RIGHTS RESERVED. COPYING, REPRODUCTION OR DISTRIBUTION PROHIBITED WITHOUT EXPRESS WRITTEN PERMISSION

PROJECT NAME:
BARKER'S ISLAND SITE IMPROVEMENTS PHASE 1

DRAWING TITLE:
BARKER'S ISLAND SITE UTILITIES
 1"=40'

FILE: 03026\dwgs\C\C1
 DRAWN BY: RSR
 CHECKED BY: -
 PROJ. NO: 03026.30
 DRAWING NO: **C.1**