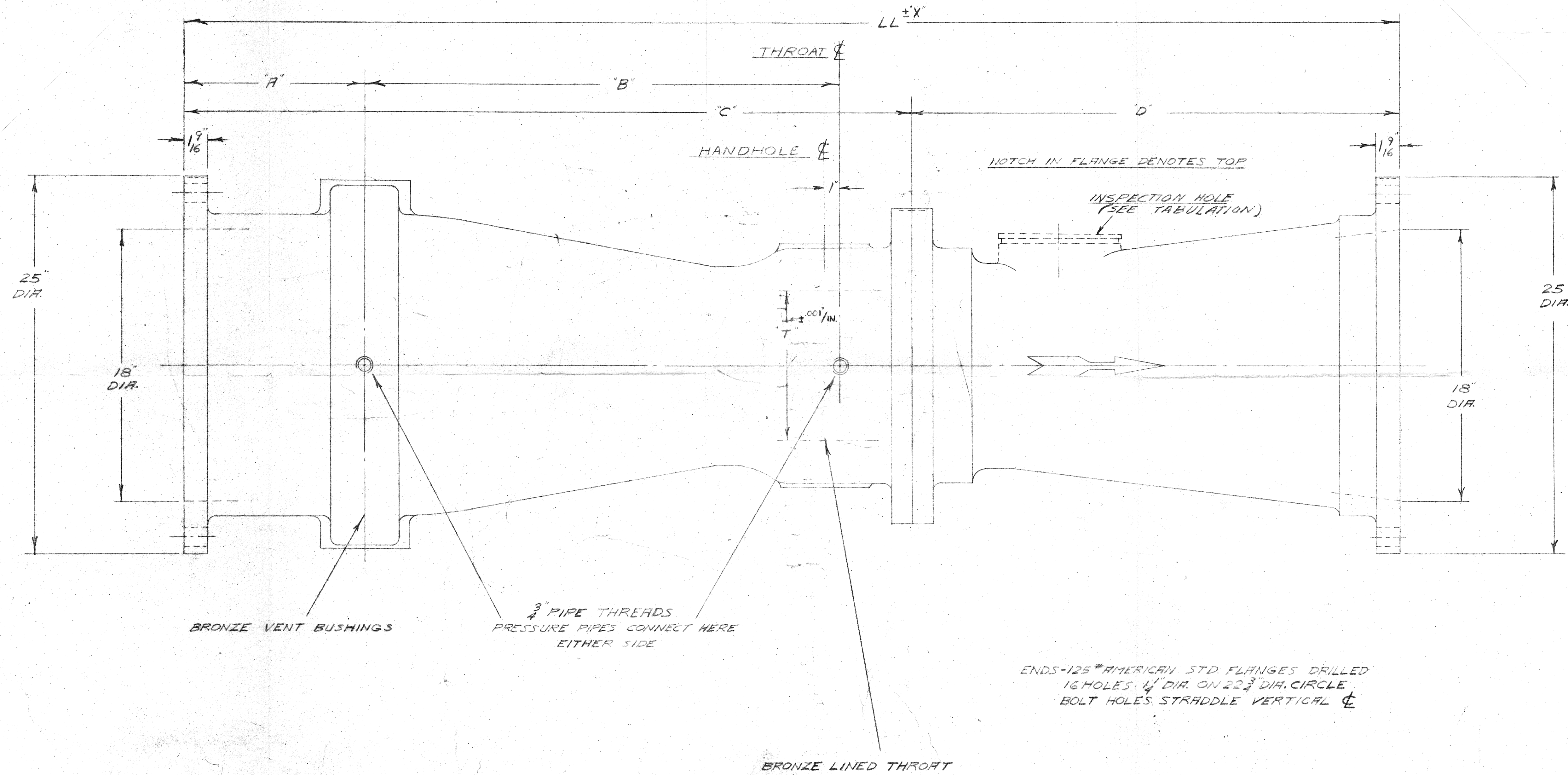


SIZE	"T"	"A"	"B"	"C"	"D"	"LL"	"X"	INSPECTION HOLE		
18-A	6.433"	12"	39 15/16"	56 11/16"	45 3/8"	102 1/16"	5 5/8"	3 DIA	WITH	WITHOUT
18-B	7.961"	12"	36 1/16"	53 5/16"	40 1/8"	93 7/16"	8 5/8"	3 DIA	WITH	WITHOUT
18-C	10.116"	12"	31 1/2"	48 1/4"	32 1/4"	80 1/2"	7 1/16"	5 DIA	WITH	WITHOUT
18-D	12.371"	12"	26 7/16"	43 3/16"	24 3/8"	67 1/16"	3 3/8"	6 DIA	WITH	WITHOUT
18-E	13.475"	12"	23 5/8"	40 3/8"	20"	60 3/8"	3 3/8"	6 DIA	WITH	WITHOUT



BRONZE VENT BUSHINGS

3/4" PIPE THREADS
PRESSURE PIPES CONNECT HERE
EITHER SIDE

BRONZE LINED THROAT

ENDS-125# AMERICAN STD. FLANGES DRILLED
16 HOLES 1/4" DIA. ON 22 3/4" DIA. CIRCLE
BOLT HOLES STRADDLE VERTICAL C

M.F. Lift Station

1957

DO NOT SCALE DRAWINGS

F	D	B
E	C	A

UNLESS OTHERWISE SPECIFIED, SHARP
EDGES TO BE BROKEN.
FRACTIONAL DIMENSIONS ± .015"
WHOLE DIMENSIONS ± .008"
DRILLED HOLES 1/16" TO 1/4" ± .0005"
REAMED HOLES 1/4" TO 3" ± .0010"

ELEVATION

MAT'L: HIGH TENSILE GRAY IRON A.S.T.M. A536: 125-02	DATE: 3-6-56	PL
FINISH: COAL TAR PAINT	SCALE: 3/4" = 1"	DR: F.H.L.
NAME: 18" VENTURI METER TUBE	FILE	CK
NO. A-128377	SUPERSEDES NO.:	
MODEL: STANDARD VTS4	SUPERSEDED BY NO.:	
B-I-F INDUSTRIES, INC. PROVIDENCE 1, R. I., U. S. A.		