

CHLORINATION/
 DECHLORINATION
 SYSTEM MODIFICATIONS

SUPERIOR WASTE WATER
 TREATMENT PLANT

SUPERIOR, WISCONSIN

ENGINEERS
 RMA ENGINEERING CO.
 DULUTH, MN.

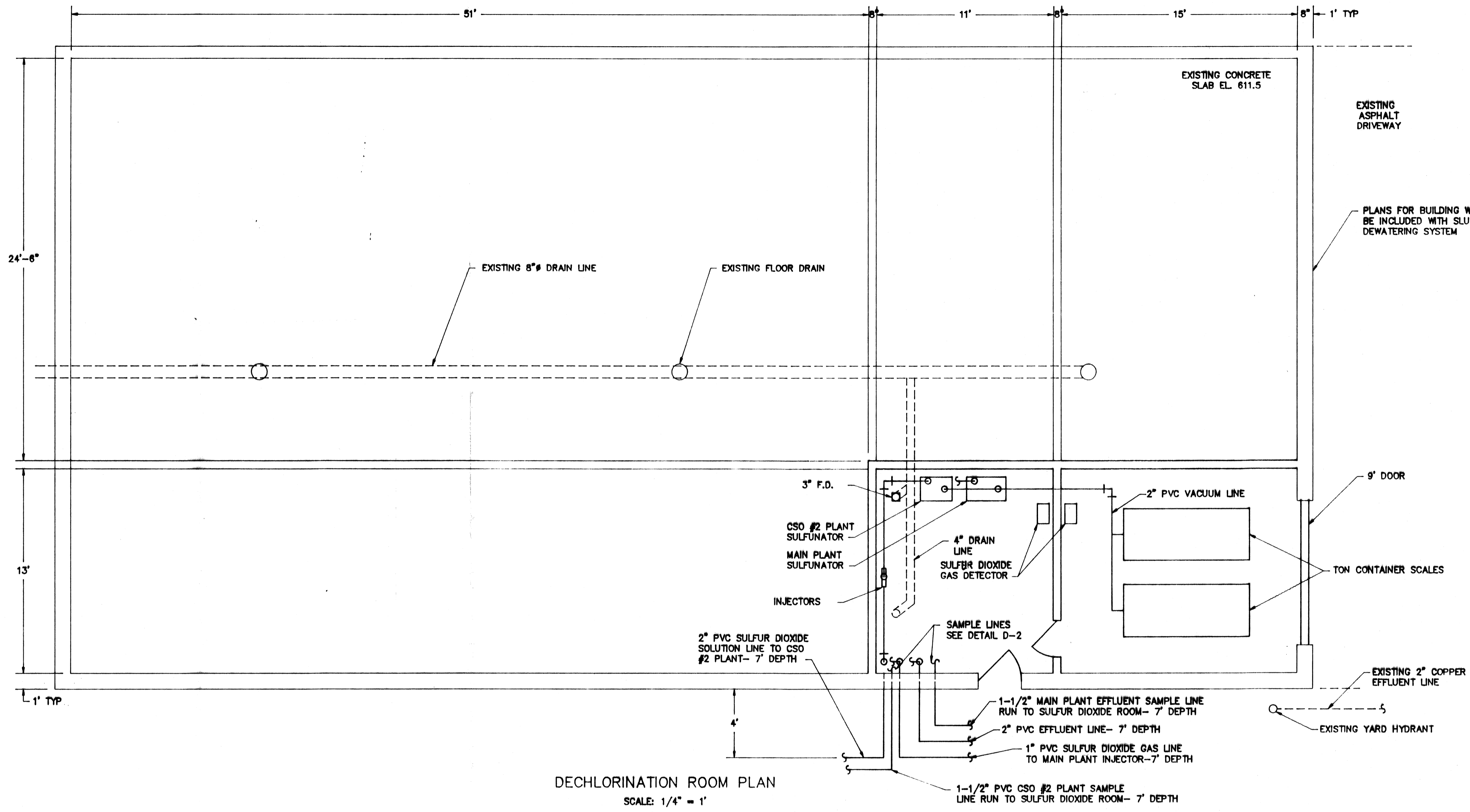
INDEX TO PLANS

TITLE	SHT. NO.
SITE PLAN & PIPING MODIFICATIONS	1
CHLORINATION/ DECHLORINATION ROOM MODIFICATIONS	2
SULFUR DIOXIDE INJECTION PLANS AND DETAILS	3
DECHLORINATION BUILDING-STRUCTURAL HEATING & VENTILATION	4
ELECTRICAL PLAN	5

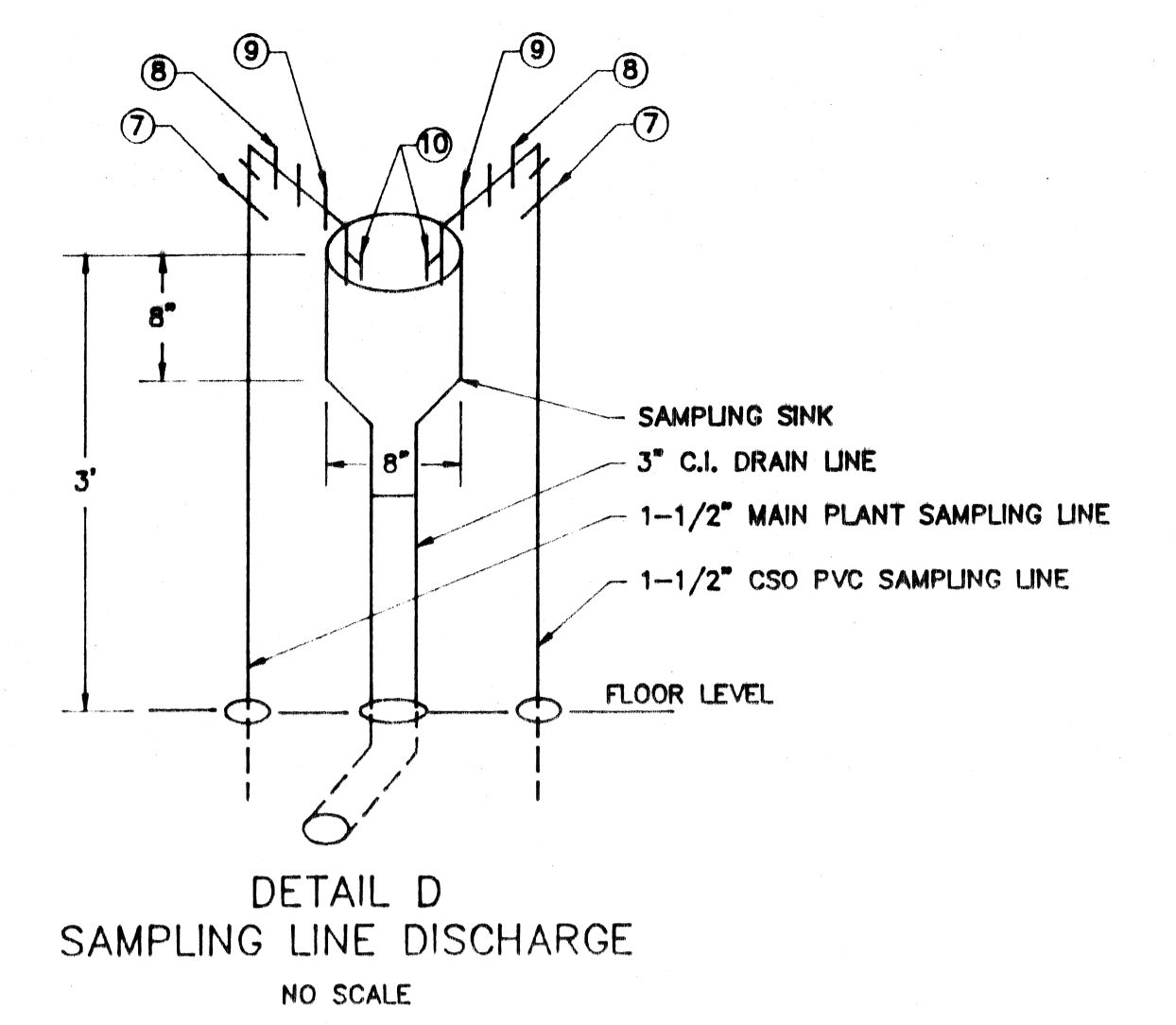
AS BUILTS

REVISIONS		
NO.	BY	DATE
1	RMA	2/8/89

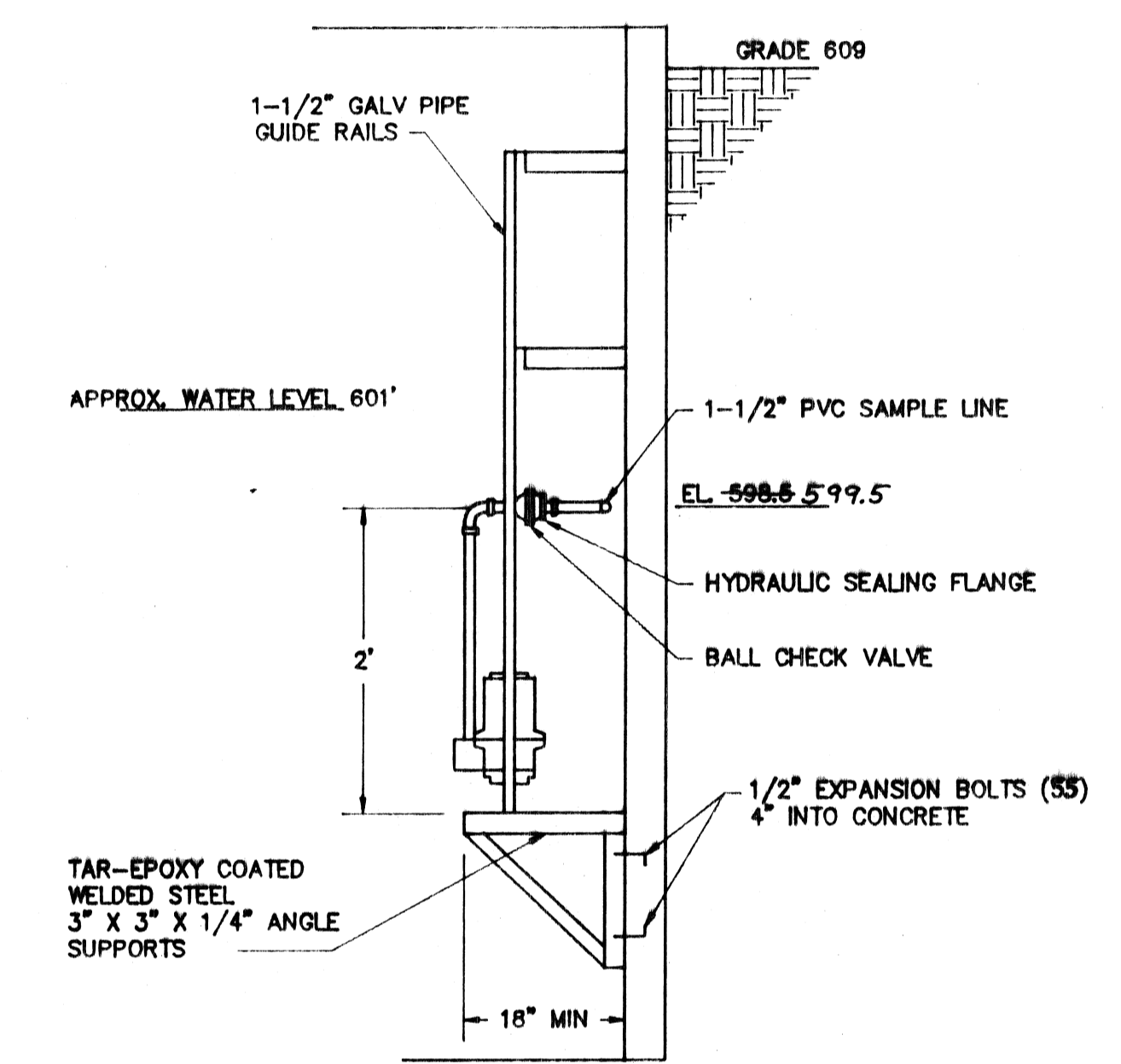
DESIGNED BY	RMA ENGINEERING COMPANY CONSULTING ENGINEERS	SCALE	JOB
DRAWN BY		DATE	
CHECKED BY		SHEET	OF
APPROVED BY		SH	



DECHLORINATION ROOM PLAN
SCALE: 1/4" = 1'

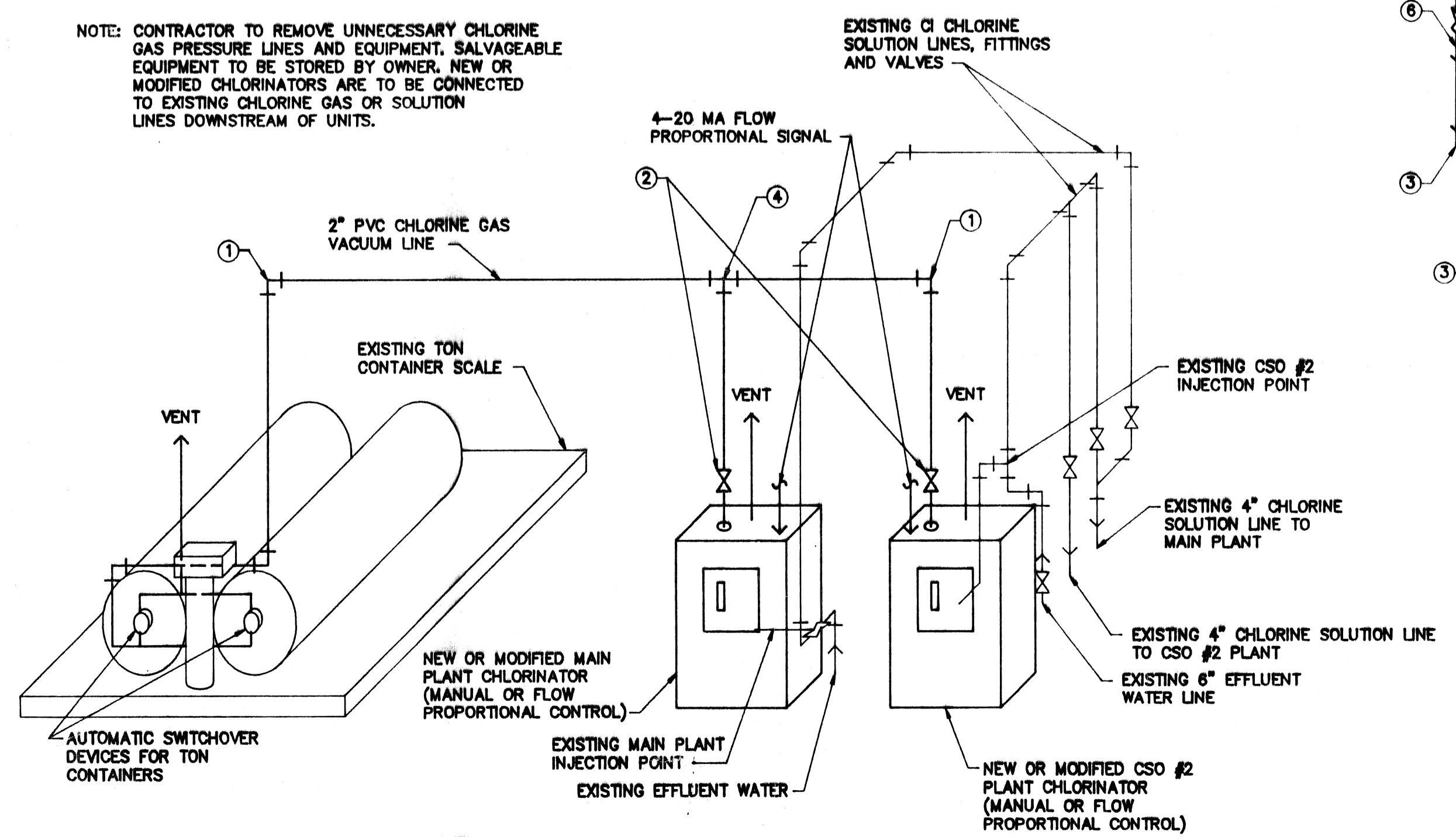


DETAIL D
SAMPLING LINE DISCHARGE
NO SCALE

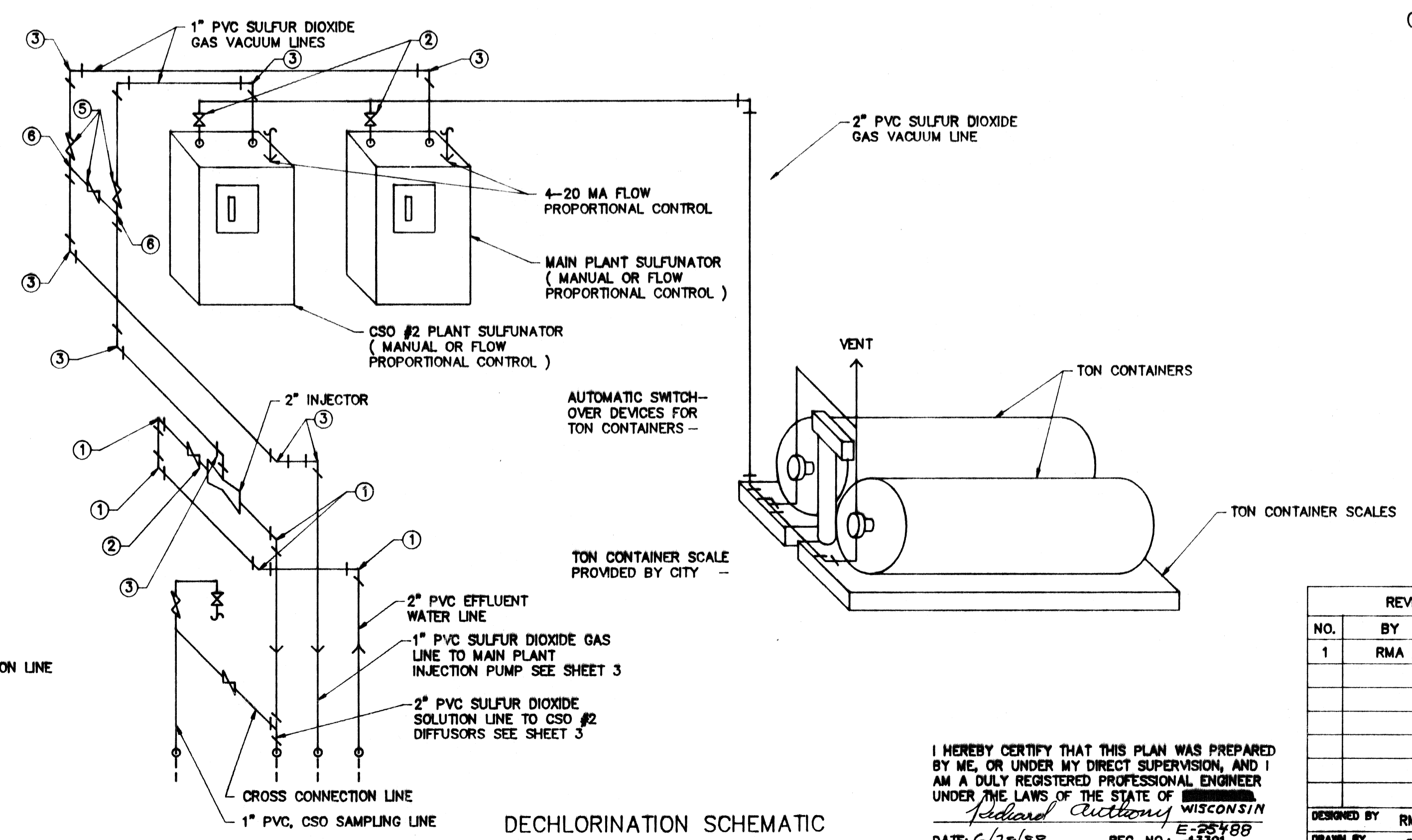


DETAIL C
CSO #2 PLANT SAMPLE PUMP MOUNTING DETAIL
NO SCALE

NOTE: CONTRACTOR TO REMOVE UNNECESSARY CHLORINE GAS PRESSURE LINES AND EQUIPMENT. SALVAGEABLE EQUIPMENT TO BE STORED BY OWNER. NEW OR MODIFIED CHLORINATORS ARE TO BE CONNECTED TO EXISTING CHLORINE GAS OR SOLUTION LINES DOWNSTREAM OF UNITS.



CHLORINATION SCHEMATIC
NO SCALE



DECHLORINATION SCHEMATIC
NO SCALE

VALVE & FITTING SCHEDULE	
1.	2" PVC 90° ELBOW
2.	2" PVC BALL VALVE
3.	1" PVC 90° ELBOW
4.	2" X 2" X 2" PVC TEE
5.	1" PVC BALL VALVE
6.	1" X 1" X 1" PVC TEE
7.	1-1/2" X 3/4" REDUCER
8.	3/4" 90° ELBOW
9.	3/4" THREADED ADAPTOR
10.	3/4" HOSE BIB

I HEREBY CERTIFY THAT THIS PLAN WAS PREPARED BY ME, OR UNDER MY DIRECT SUPERVISION, AND I AM A DULY REGISTERED PROFESSIONAL ENGINEER UNDER THE LAWS OF THE STATE OF WISCONSIN.
Edward A. RMA
DATE: 6/28/88 REG. NO.: E-25488-15391

AS BUILT'S CAD FILE BY DIGI-CAD SERVICES, INC.

REVISIONS		
NO.	BY	DATE
1	RMA	2/8/89

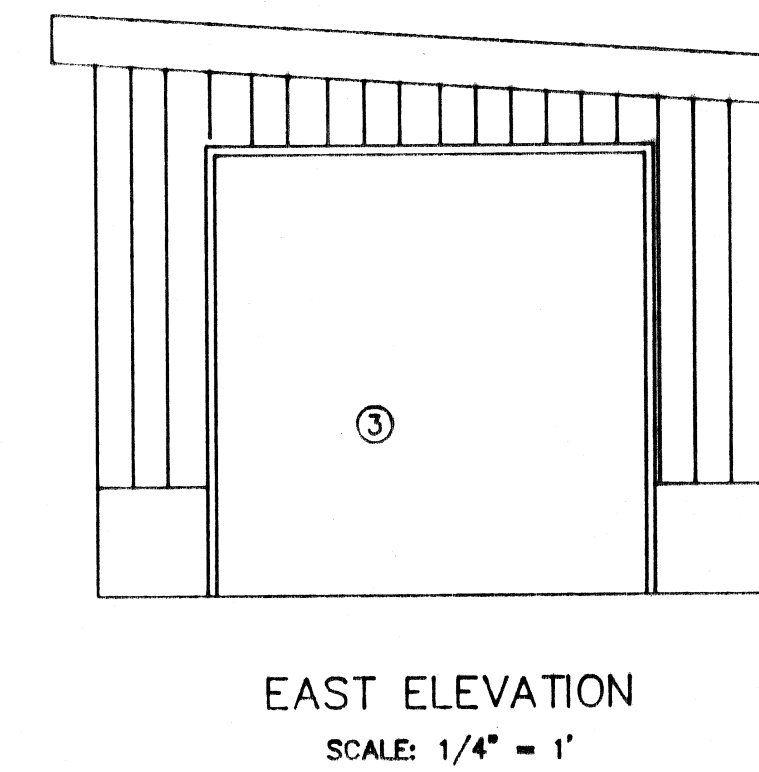
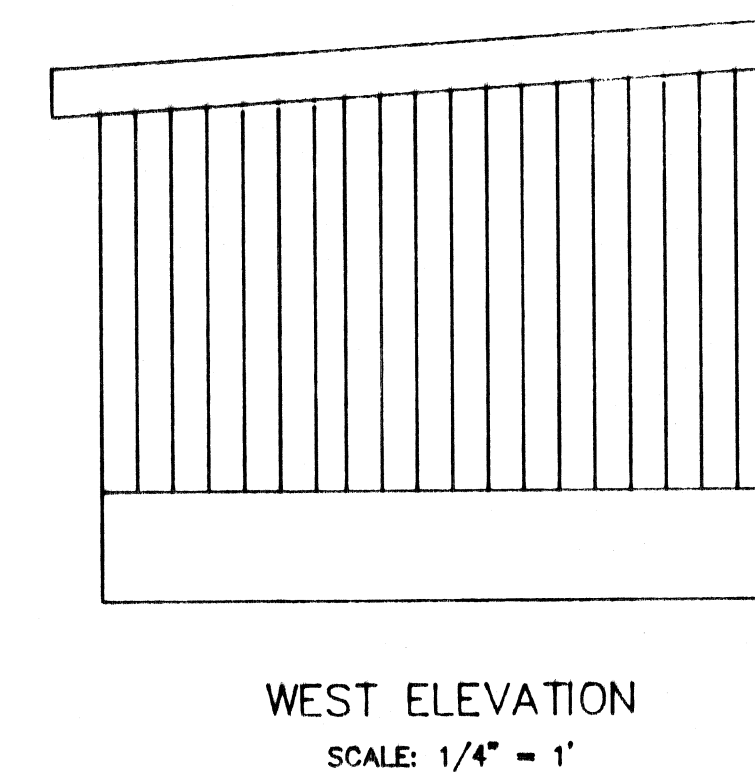
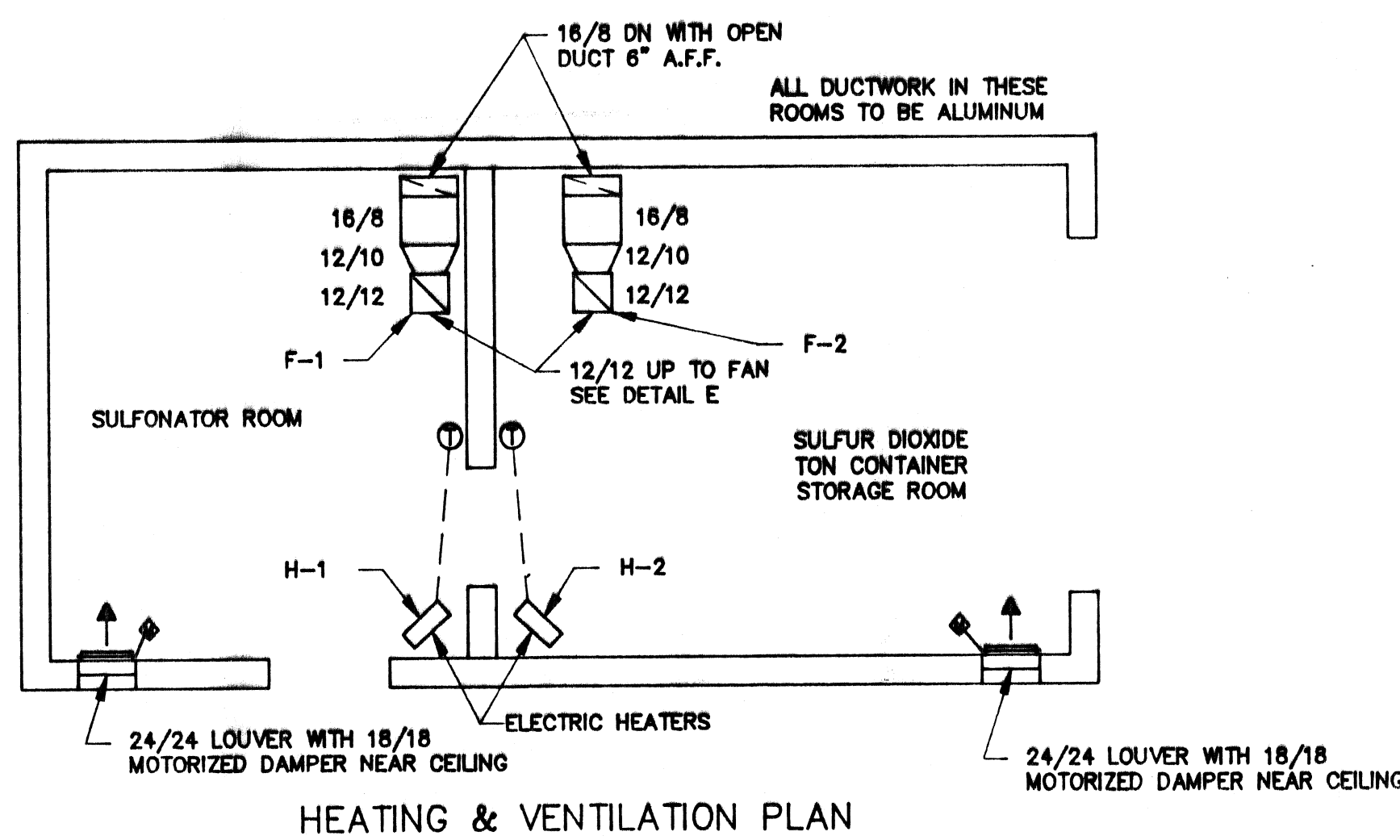
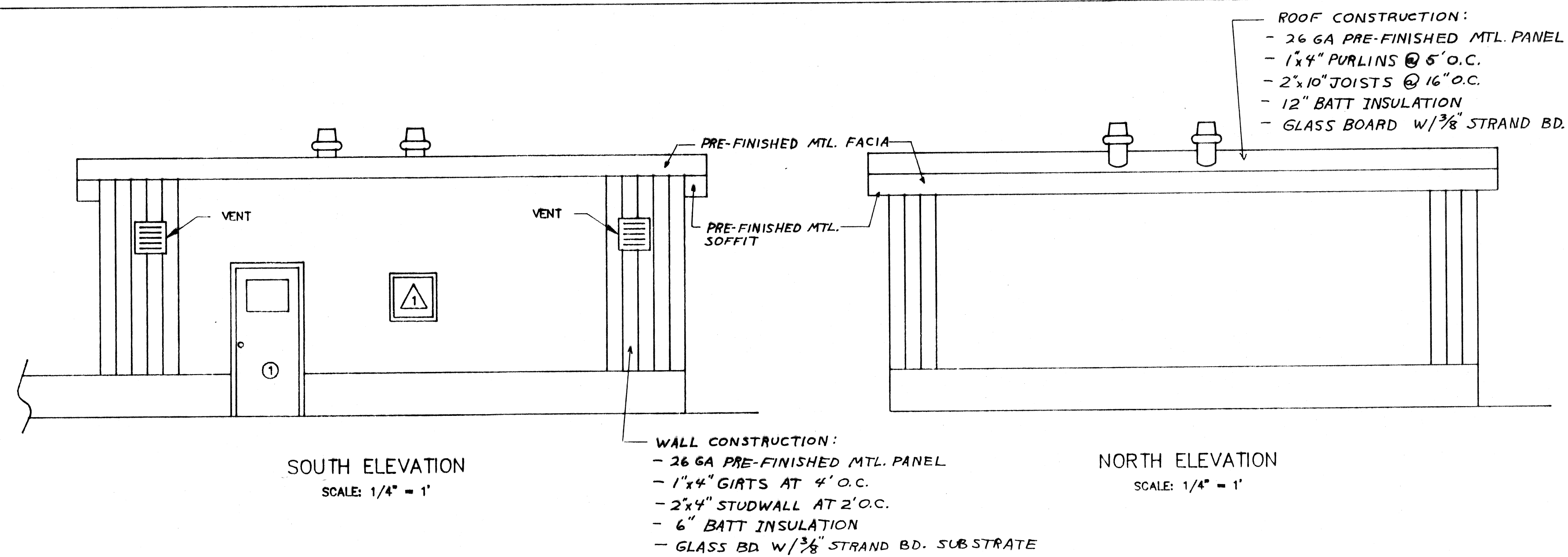
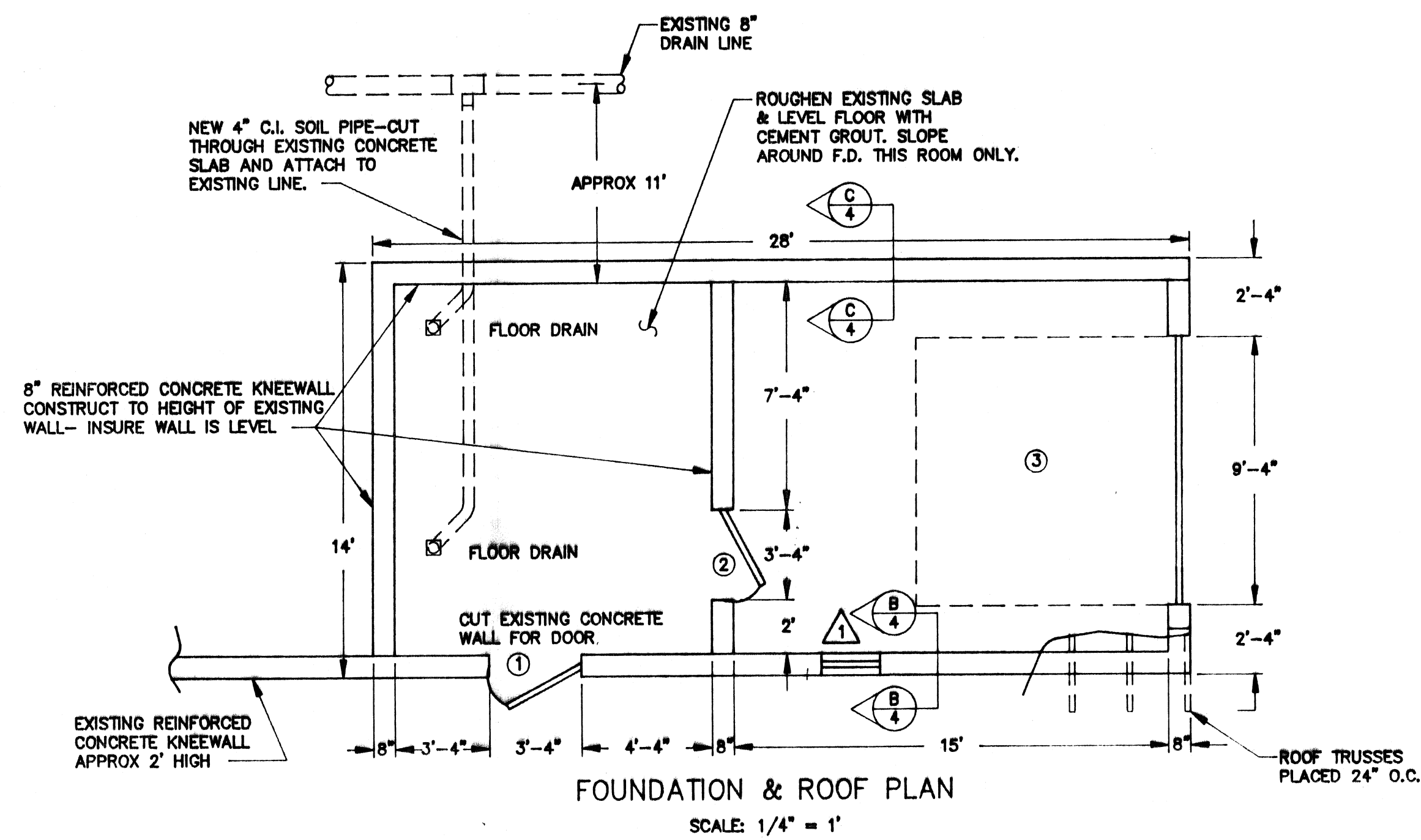
CHLORINATION/DECHLORINATION ROOM MODIFICATIONS

CITY OF SUPERIOR, WISCONSIN WASTE WATER TREATMENT PLANTS CHLORINATION/DECHLORINATION

DESIGNED BY	RMA	SCALE	AS SHOWN	JOB NO.
DRAWN BY	OB	DATE	6/28/88	
CHECKED BY	RMA			
APPROVED BY				

RMA ENGINEERING COMPANY CONSULTING ENGINEERS

SHEET 2 OF 5

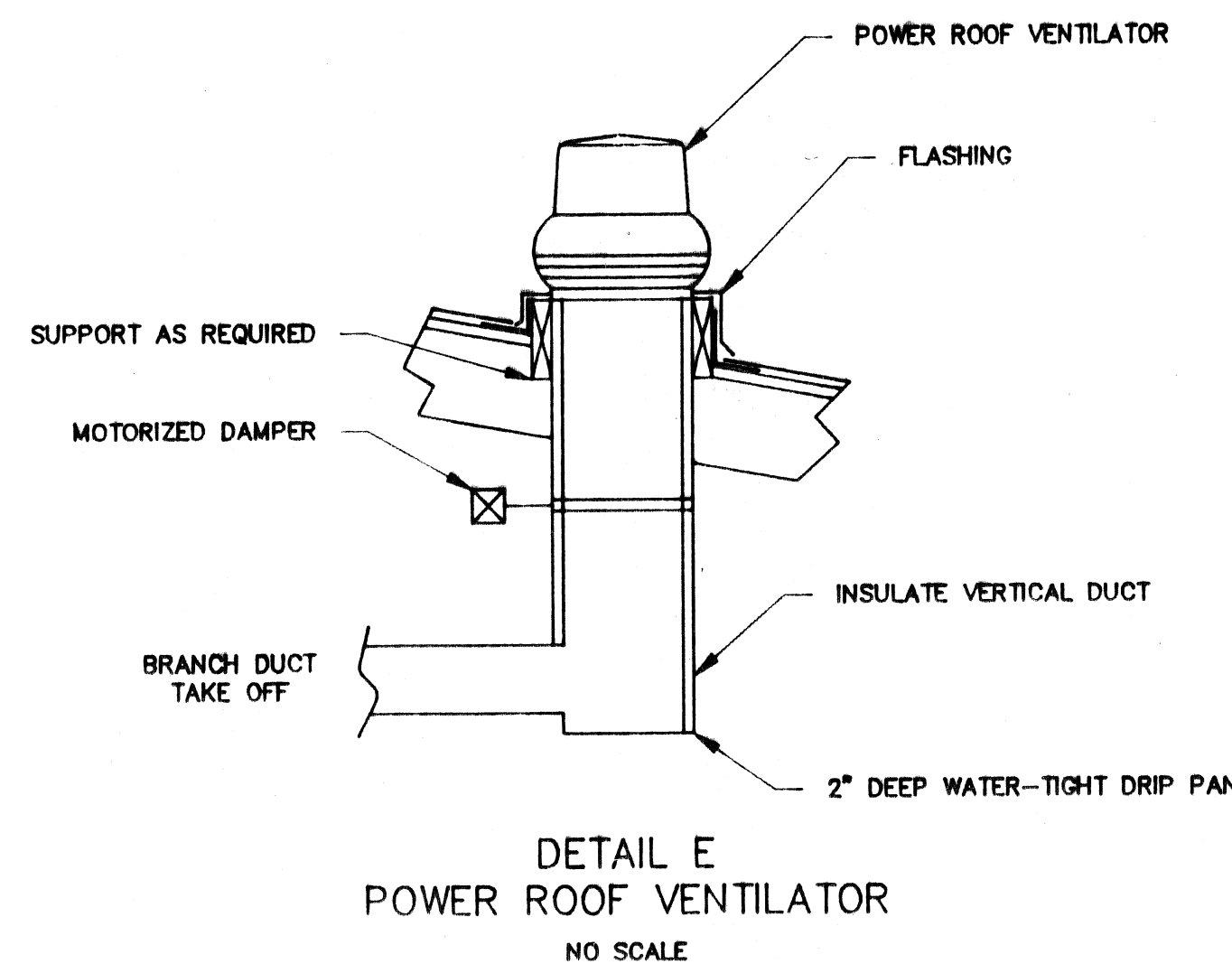


FAN SCHEDULE							
UNIT #	LOCATION	MANUFACTURERS DESIGNATION	CFM	S.P.	RPM	ARRANGEMENT	VOLT/PH
F-1	SULFONATOR ROOM	PENN AB35	580	0.25"	792	P.R. VENTLR	120/1
F-2	STORAGE ROOM	PENN AB35	580	0.25"	792	P.R. VENTLR	120/1

ELECTRIC UNIT HEATER								
UNIT #	LOCATION	MANUFACTURERS DESIGNATION	CFM	MBH	KW	ARRANGEMENT	VOLT/PH	REMARKS
EH-1	SULFONATOR ROOM	CHROMALOX CCR-003	400	10.2	3	HORIZONTAL	208/1	CORROSION RESISTANT
EH-2	STORAGE ROOM	CHROMALOX CCR-003	400	10.2	3	HORIZONTAL	208/1	CORROSION RESISTANT

DOOR SCHEDULE							
LOCATION DESIGNATION	TYPE	ROUGH OPENING	SIZE	THRESHOLD	REMARKS		
①	INSULATED STEEL	3'-4" x 7'-4"	3' x 7'	ALUMINUM	INSPECTION WINDOW		
②	STEEL	3'-4" x 7'-4"	3' x 7'	NONE	INSPECTION WINDOW		
③	INSULATED STEEL	9'-4" x 9'-2"	9' x 9'	NONE	POWER DOOR OPENER		

WINDOW SCHEDULE					
LOCATION DESIGNATION	ROUGH OPENING	SIZE	GLASS	REMARKS	
①	2'-4" x 2'-4"	2' x 2'	DBLE GLAZED INSULATION	FIXED OBSERVATION	



I HEREBY CERTIFY THAT THIS PLAN WAS PREPARED BY ME, OR UNDER MY DIRECT SUPERVISION, AND I AM A DULY REGISTERED PROFESSIONAL ENGINEER UNDER THE LAWS OF THE STATE OF WISCONSIN.
 Richard Anthony
 DATE: 6/28/88 REG. NO.: 43304

AS BUILTS CAD FILE BY DIGI-CAD SERVICES, INC.

REVISIONS		
NO.	BY	DATE
1	RMA	2/8/89

DECHLORINATION BUILDING-STRUCTURAL HEATING AND VENTILATION

CITY OF SUPERIOR, WISCONSIN
 WASTEWATER TREATMENT PLANTS
 CHLORINATION/DECHLORINATION

DESIGNED BY	RMA	SCALE	AS SHOWN	JOB NO.
DRAWN BY	GB	DATE	12/9/88	
CHECKED BY		RMA ENGINEERING COMPANY		
APPROVED BY		CONSULTING ENGINEERS		

SHEET 4 OF 5

