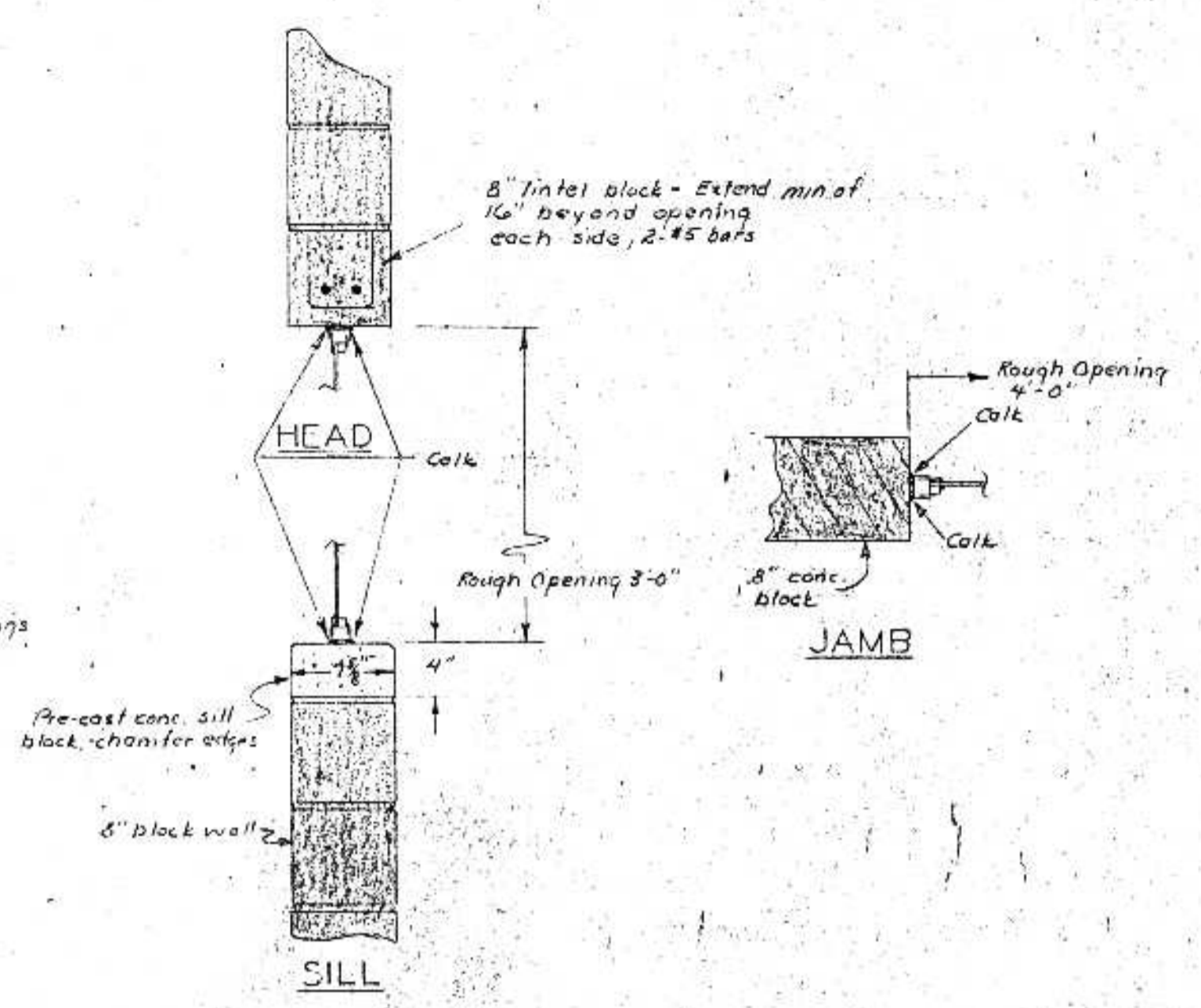
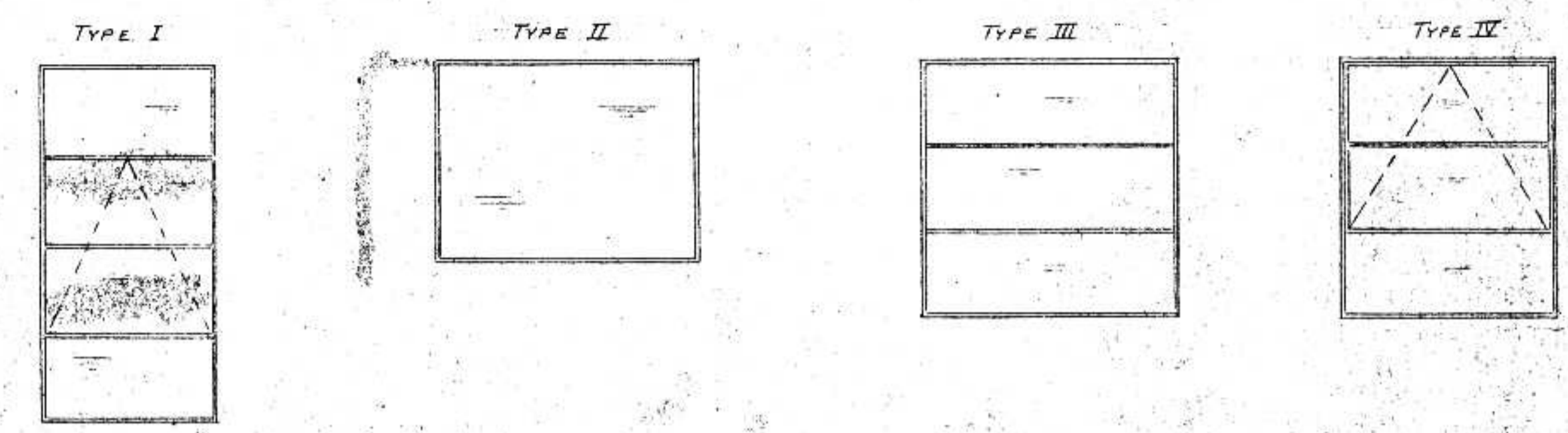


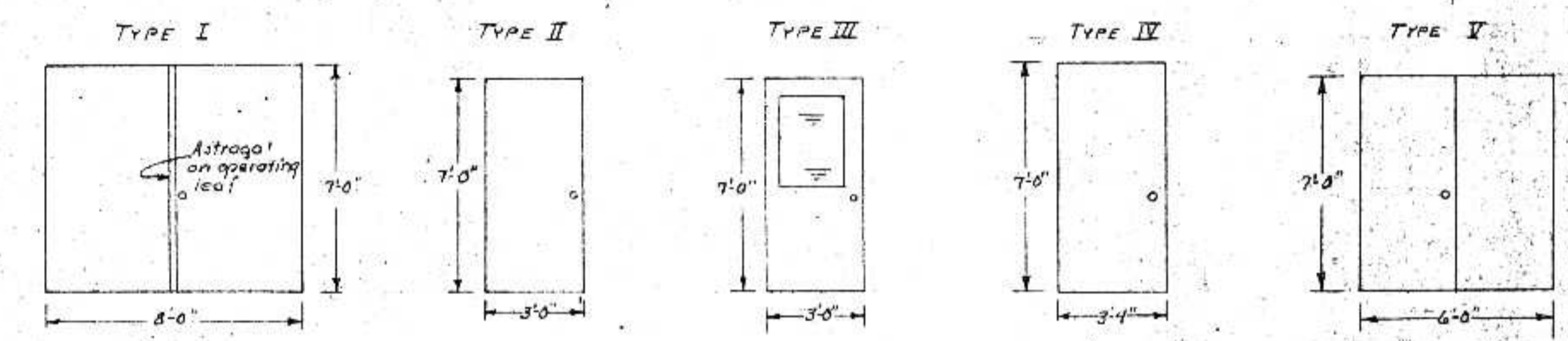
WINDOW DETAIL #1
Scale 1/4" = 1'-0"



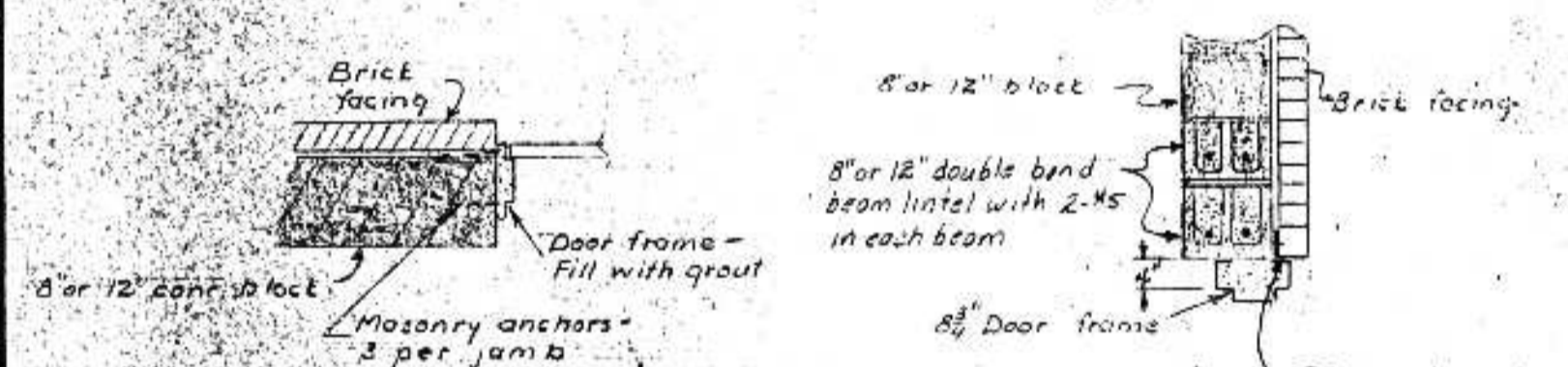
WINDOW DETAIL #2
Scale 1/4" = 1'-0"



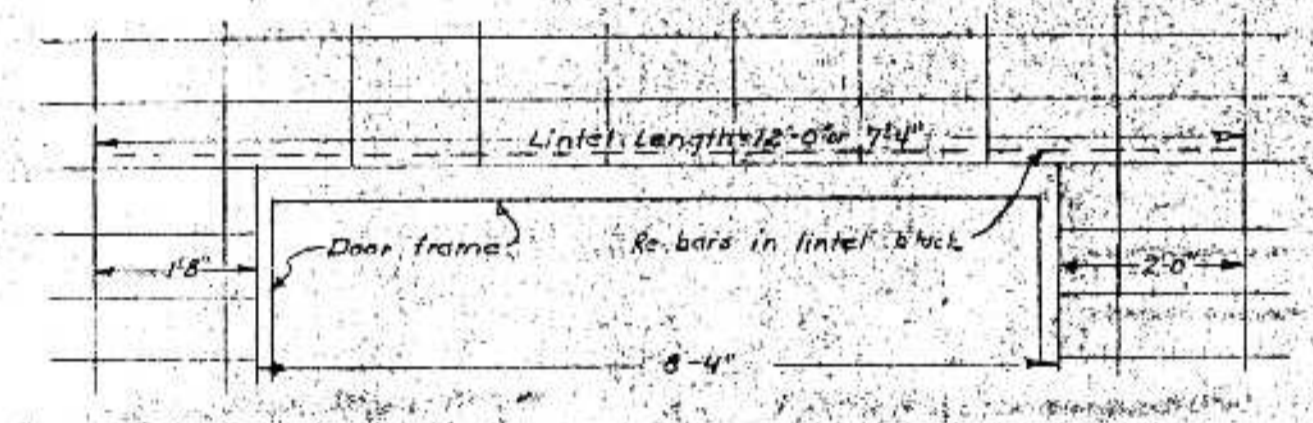
WINDOW TYPES



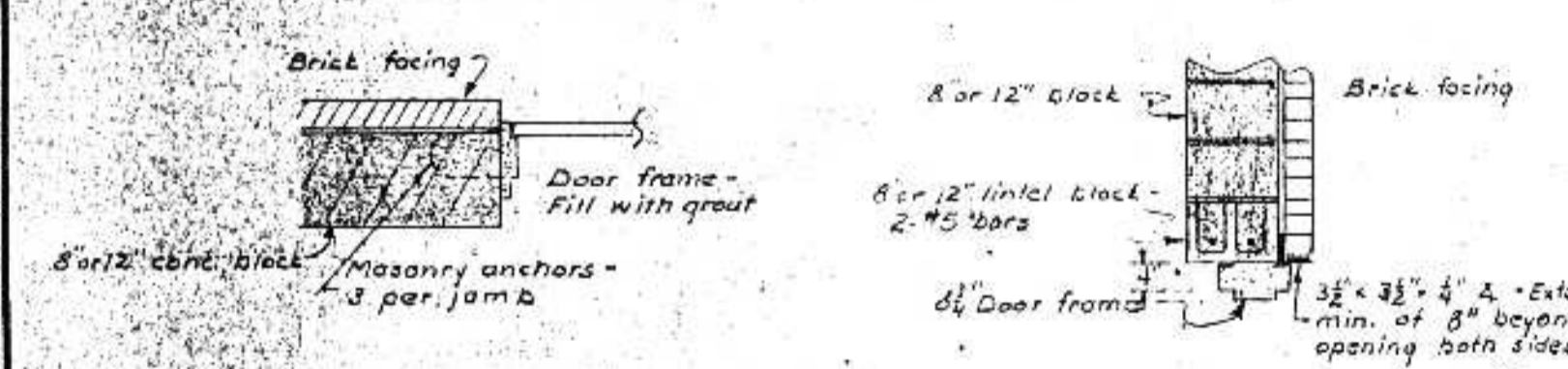
DOOR TYPES



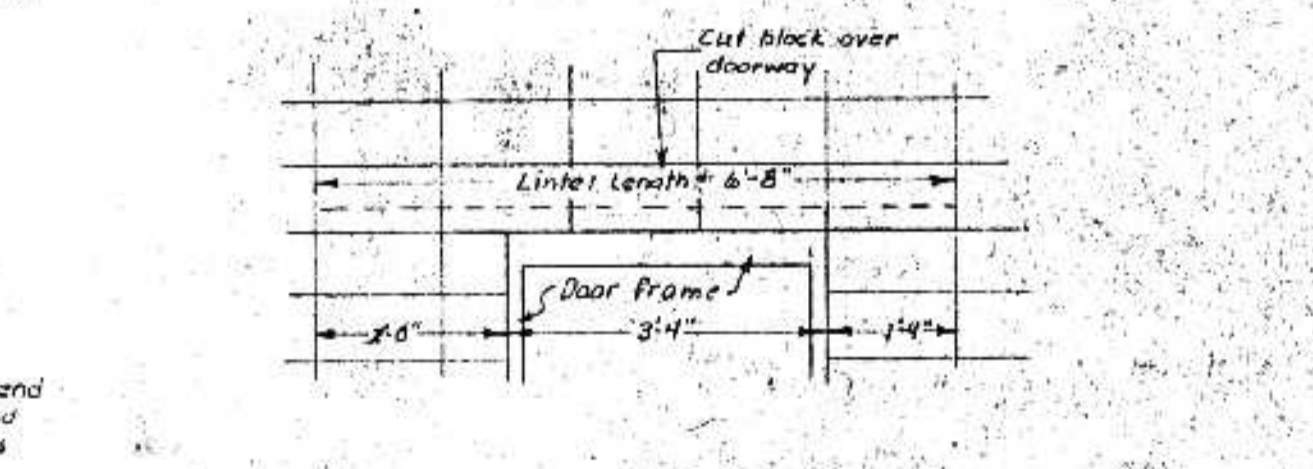
DOOR DETAIL #1
Scale 1/2" = 1'-0"



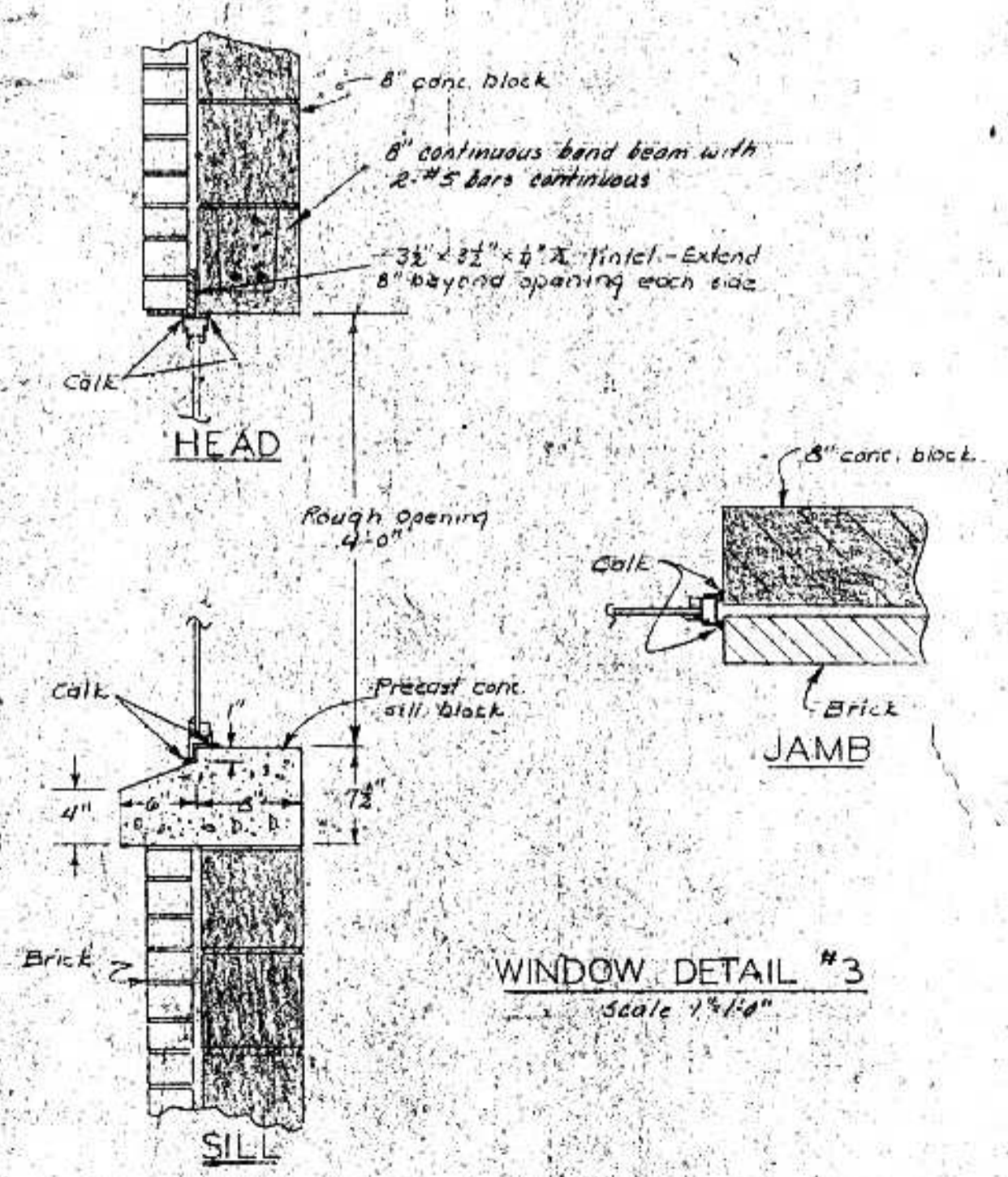
DOOR DETAIL #2
Scale 1/2" = 1'-0"



DOOR DETAIL #3
Scale 1/2" = 1'-0"



DOOR DETAIL #4
Scale 1/2" = 1'-0"



WINDOW DETAIL #3
Scale 1/4" = 1'-0"

NOTE:
S.B. refers to Screen Bldg.
S.B. refers to Blower Bldg.
S.A. refers to Storage Area.

Designation	Type	Rough Opening	Detail Reference	Remarks
SB-W1	I	2'-9" x 5'-6 1/2"	#1	Sealed, Dble Paned, Insulating Units
SB-W2	I	2'-9" x 5'-6 1/2"	#1	"
SB-W3	I	2'-9" x 5'-6 1/2"	#1	"
SB-W4	I	4'-9" x 5'-6 1/2"	#1	"
SB-W5	I	2'-9" x 5'-6 1/2"	#1	"
SB-W6	I	2'-9" x 5'-6 1/2"	#1	"
SB-W7	I	2'-9" x 5'-6 1/2"	#1	"
SB-W8	I	4'-9" x 5'-6 1/2"	#1	"
SB-W9	II	3'-0" x 4'-0"	#2	Dble Strength Glass
BB-W1	IV	4'-0" x 4'-0"	#3	Sealed, Dble Paned, Insulating Units
BB-W2	IV	4'-0" x 4'-0"	#3	"
BB-W3	IV	4'-0" x 4'-0"	#3	"
BB-W4	III	4'-0" x 4'-0"	#3	"
BB-W5	III	4'-0" x 4'-0"	#3	"
BB-W6	III	4'-0" x 4'-0"	#3	"
BB-W7	IV	4'-0" x 4'-0"	#3	"
BB-W8	IV	3'-4" x 4'-0"	#3	"
BB-W10	IV	3'-4" x 4'-0"	#3	"

* Sill must be flush with brick.

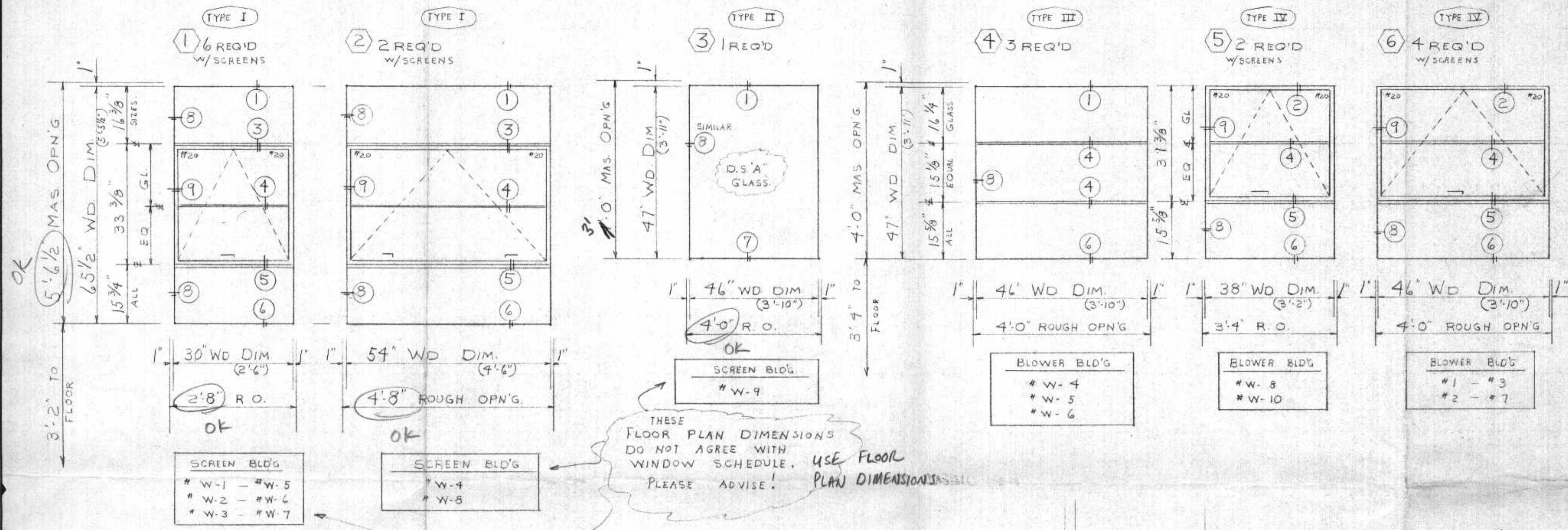
Designation	Type	Size	Rough Opening	Detail Reference
SB-D1	I	8'-0" x 7'-0"	8'-4" x 7'-4"	#1
SB-D2	II	3'-0" x 7'-0"	3'-4" x 7'-4"	#2
SB-D3	III	3'-0" x 7'-0"	3'-4" x 7'-4"	#2
SB-D4	III	3'-0" x 7'-0"	3'-4" x 7'-4"	#2
SB-D5	II	3'-0" x 7'-0"	3'-4" x 7'-4"	#3
BB-D1	IV	3'-4" x 7'-0"	3'-8" x 7'-4"	#2
BB-D2	IV	3'-4" x 7'-0"	3'-8" x 7'-4"	#2
BB-D3	II	3'-0" x 7'-0"	3'-4" x 7'-4"	#2 *
BB-D4	II	3'-0" x 7'-0"	3'-4" x 7'-4"	#2
BB-D5	II	3'-0" x 7'-0"	3'-4" x 7'-4"	#4
BB-D6	II	2'-0" x 7'-0"	2'-4" x 7'-4"	#4
SB-D6	V	6'-0" x 7'-0"	6'-4" x 7'-4"	#3
SA-D1	II	3'-0" x 7'-0"	3'-4" x 7'-4"	See Sheet 20
SA-D2	II	3'-0" x 7'-0"	3'-4" x 7'-4"	See Sheet 20
SA-D3	II	13'-6" x 10'-0"	13'-10" x 10'-3"	See Sheet 20

D.N.R. OCT 10 1975

Notes: See Sheet 20 for Spacing for 12" x 16" & 7" x 12" overhead doors.
* 8" Intel reg. Frame Head to have 1/8" gap top.



SERIES 2250-T 2 1/4" THERMAL-BARRIER ALUMINUM WINDOWS



<input type="checkbox"/>	White Bronze Slimline	PO	14	R	2	L
<input type="checkbox"/>	Cam Handles	PJ		R		L
<input type="checkbox"/>	Ring	PJ		R		L
<input type="checkbox"/>	Spring Catchers	White Bronze		R		L
<input type="checkbox"/>	Underscreen Bar Operators	Zinc Die Cast		R		L
<input type="checkbox"/>		12"		R		L
<input type="checkbox"/>		16"		R		L
<input type="checkbox"/>	Roto Operators RH			LH		
<input type="checkbox"/>	Casement Keepers					
<input type="checkbox"/>	Two Point Caseament Keepers					
<input type="checkbox"/>	Almag Caseament Hinge	Pr. RH				
<input type="checkbox"/>	Four Bar Hinges	77AL #20		19 PR		
<input type="checkbox"/>	Butt Hinges	Stainless Steel				Pcs.
<input type="checkbox"/>		Aluminum				Pcs.
<input type="checkbox"/>	WMC White Bronze Convexed Cam Lock					
<input type="checkbox"/>	#500-4 Removable Handles					
<input type="checkbox"/>	WMC Standard Friction Shoe Hardware					
<input type="checkbox"/>	#445 Aluminum Pull Handle					

SCREEN REQUIREMENTS		FINISH	ANODIZE	EXTRUDED
Qty	Spec.	Color	Temp.	Temp.
1	6	OUT		
2	2	OUT		
5	2	OUT		
6	4	OUT		

FINISH

201-R1 Anodize
 204-R1 Anodize

2 Coats Clear Methacrylate Lacquer
 2 Coats Clear Methacrylate Lacquer

Finish should be cleaned with mild soap and warm water using a soft cloth or sponge. Caution: Never clean surface with abrasive cleaning compounds, chemicals, or steel wool. Do not attempt to remove scratches, marks or blemishes from this finish. Before doing this, contact the manufacturer for technical advice.

Note: Periodic waxing after cleaning will help maintain the appearance. Use a good grade non-yellowing paste wax. Do not use wax which contains cleaning abrasives or combination cleaning and waxing compounds.

WARNING: All plaster, mortar, cement, and masonry cleaning acid must be removed before this material dries. After removal flush off surface with clean water and dry.

TRIM AND ACCESSORIES		Refer Sheet
GLAZING		Refer Sheet
SHOP NOTES		Refer Sheet
WEATHERSTRIPPING		DOUBLE <input type="checkbox"/> SINGLE <input type="checkbox"/> NEOPRENE <input type="checkbox"/>
RECORD OF PRINTS		No. Req'd Date Sheet
1	2	11-17-76 1-2

WAUSAU METALS CORP.
 Telephone 845-2161
 Area Code 715

P.O. BOX 1305
 Wausau, Wis. 54401

Proposal No. 51449-A Date 9-3-76
 Cust's Order No. DW-114 Date 7-19-76
 Customer W.L. HALL CO.
 MINNEAPOLIS, MINN.
 Representative SAME

Building COMBINED SEWER OVERFLOW TREATMENT
 Location SUPERIOR, WIS. PLANT
 Architect BONESTROO-ROSENE-ANDERLUK
 ST. PAUL, MINN.

Rev. 3/4" x 1" 0" Scale FULL SHEET NO. 1 OF 2
 JOB NO. 10169

SHOP DRAWING REVIEW

NO EXCEPTIONS TAKEN
 MAKE NOTED CORRECTIONS
 AMEND AND RESUBMIT
 BONESTROO, ROSENE, ANDERLUK & ASSOCIATES, INC.
 12-17-76 by MVS

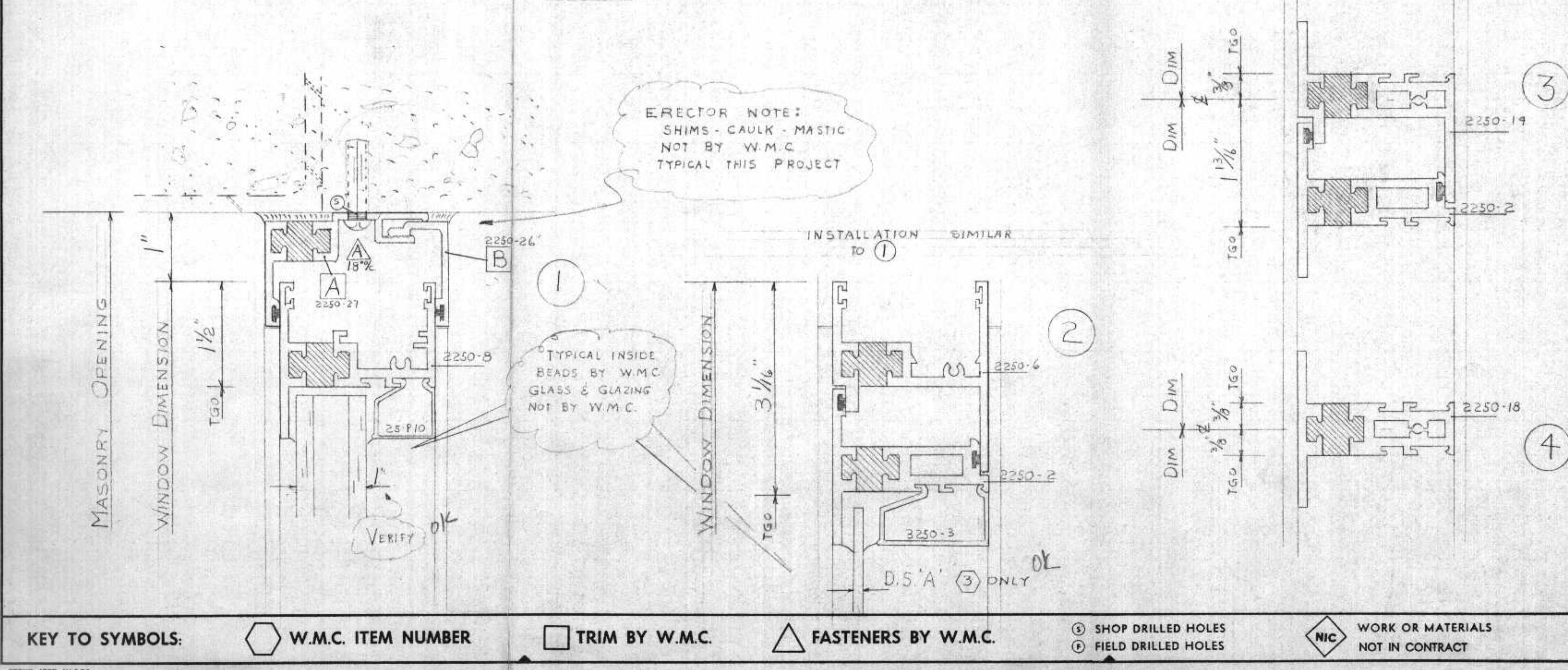
Date	By	Chkd.	Date	REVISIONS

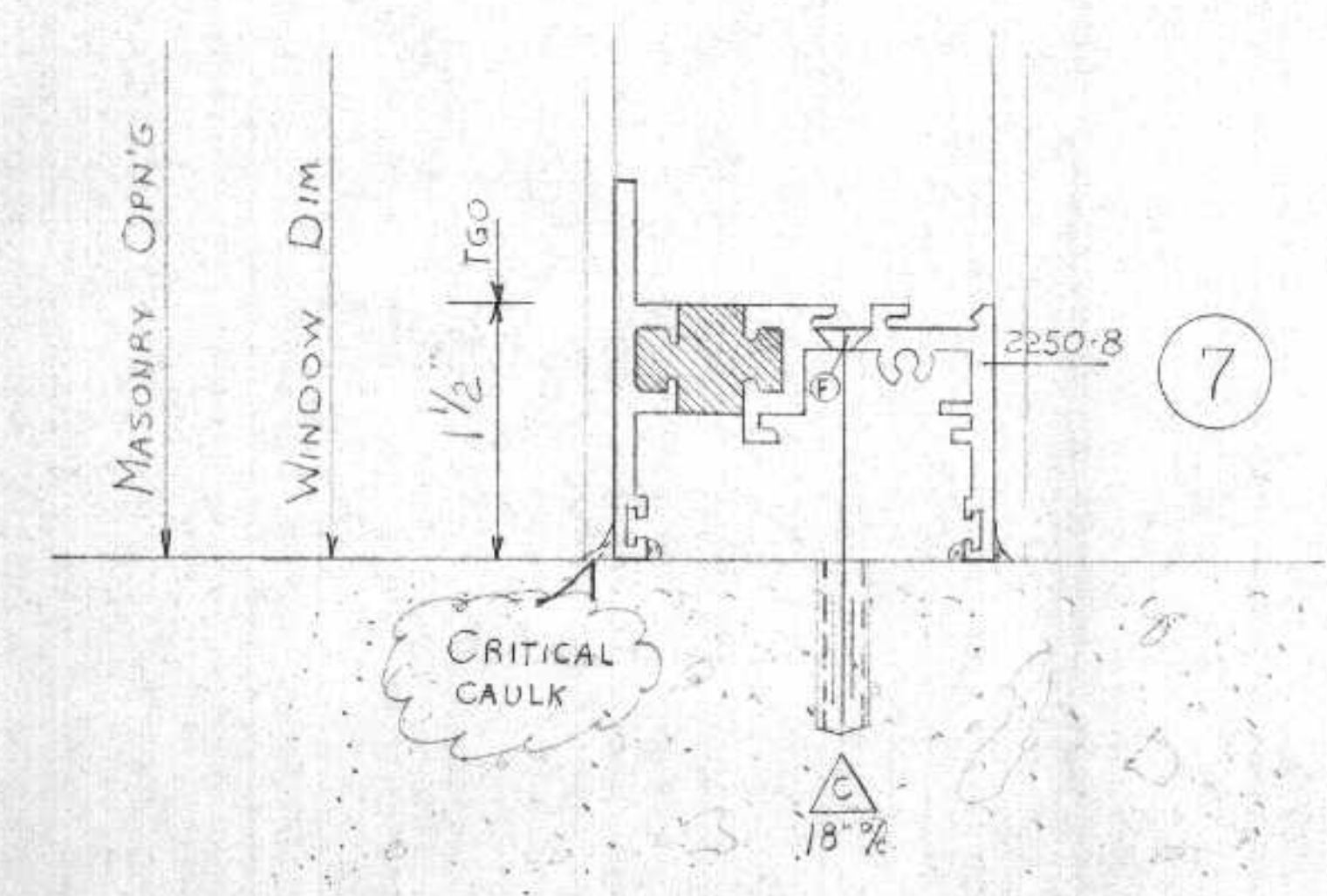
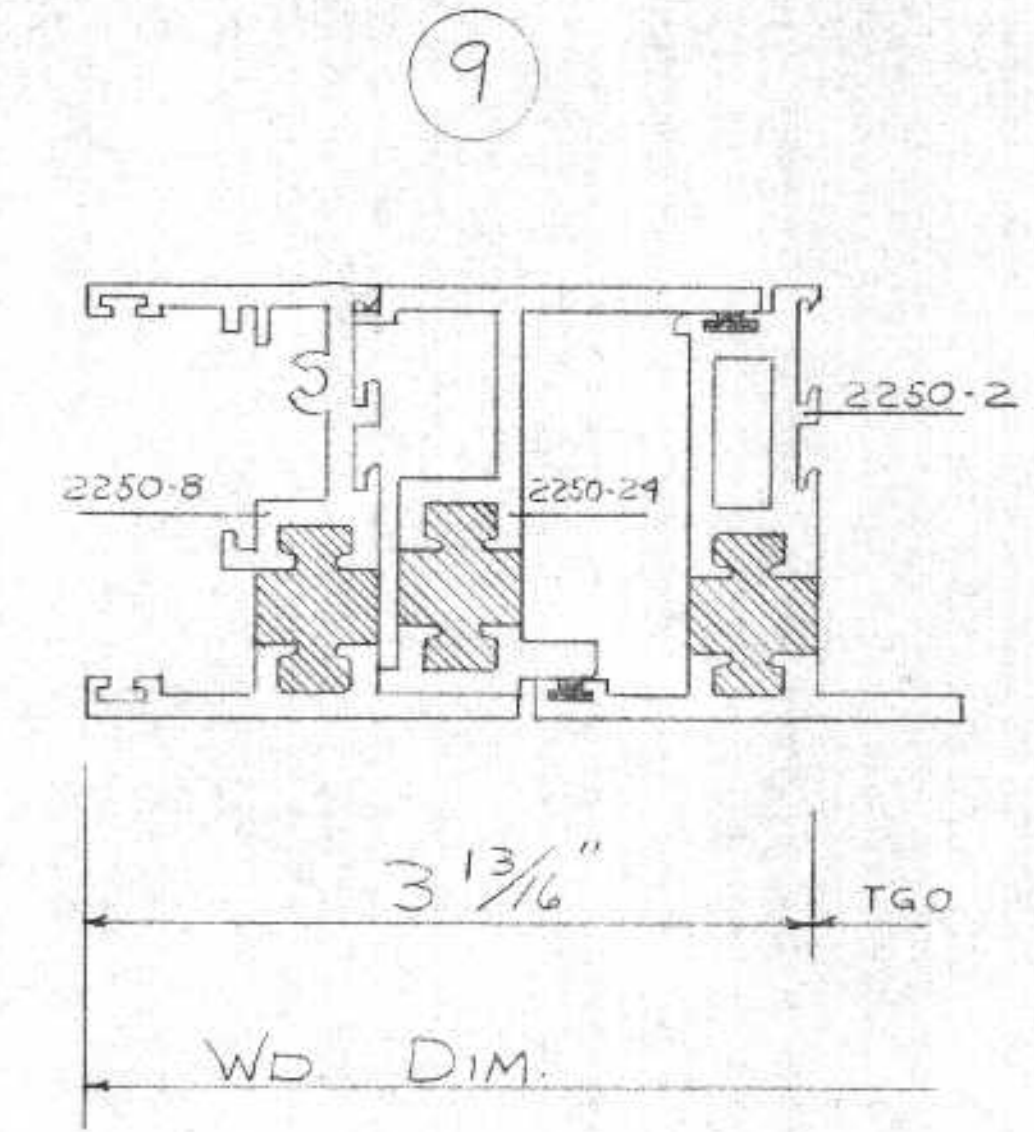
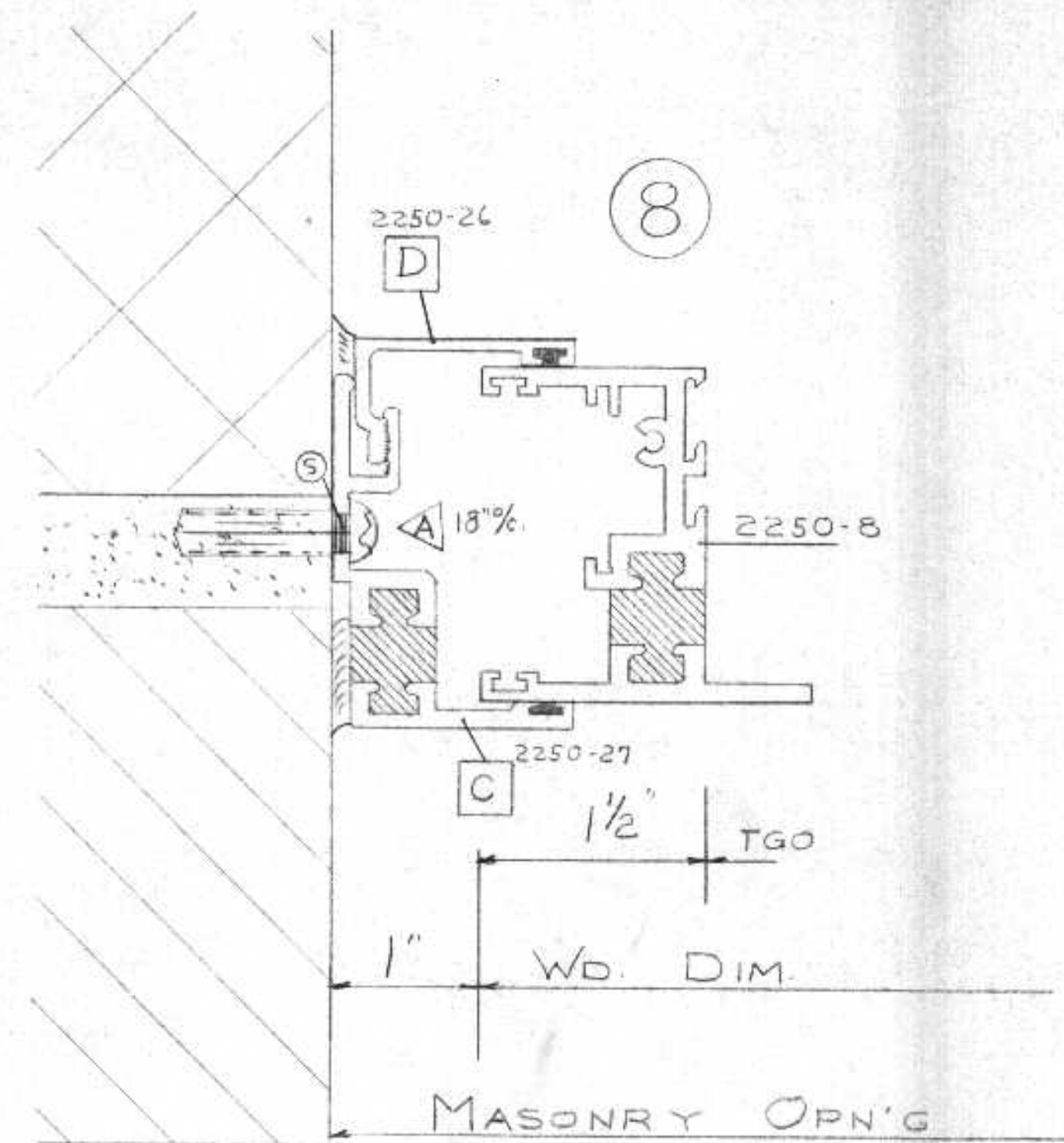
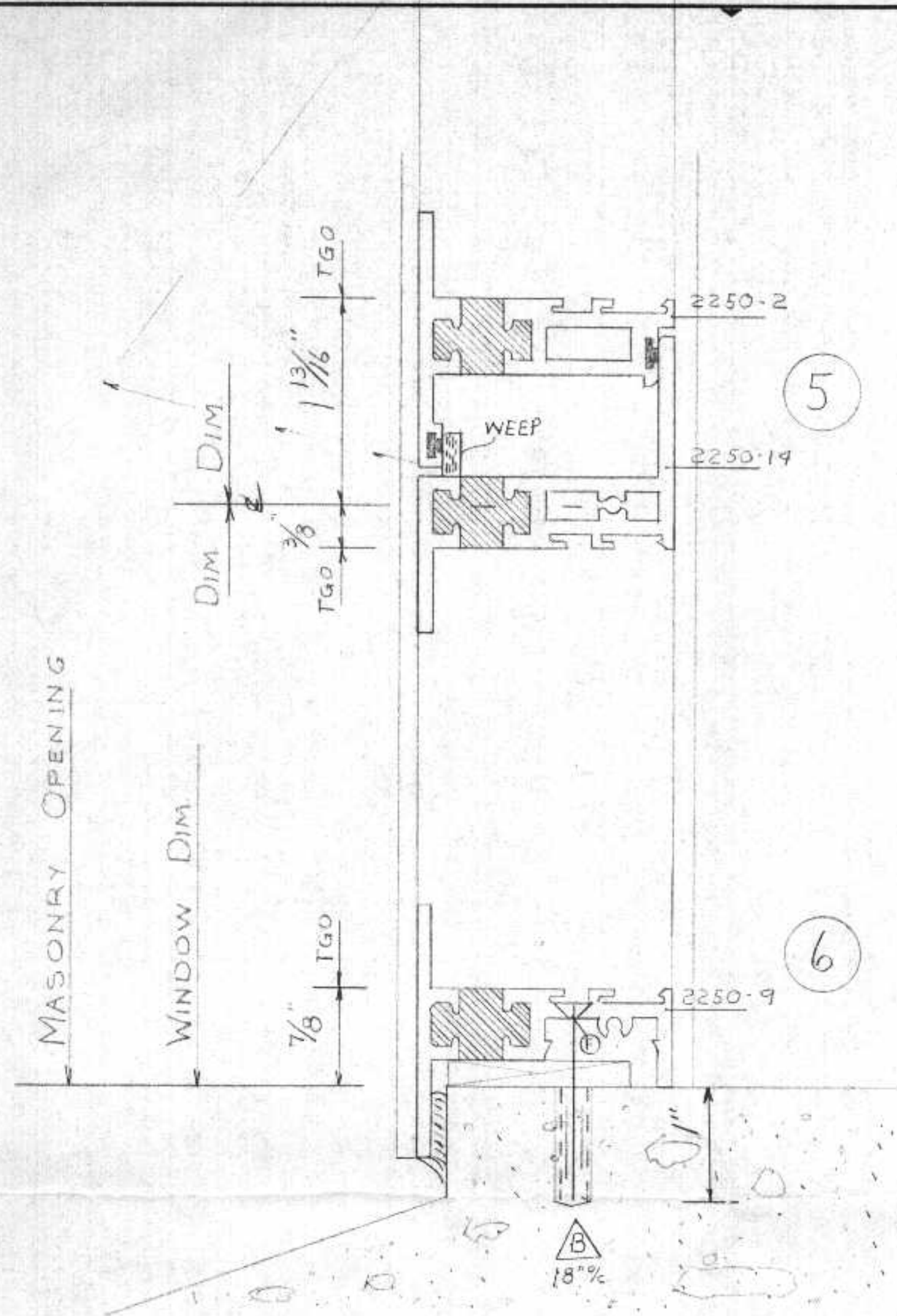
CONTRACTOR'S APPROVAL
 Firm _____ Date _____

ARCHITECT'S APPROVAL
 Firm _____ Date _____

GENERAL NOTES

- The head of the Glass Block Units must be braced with a wood prop at the center of each operating sash while the glass block is being laid and remain there until the mortar has set.
- All sash are custom fit to the openings. They should not be removed for glazing to avoid damage to the sliding shoes and tension spring housings.
- All anchor screws occurring at sills to be set in bed of mastic by erector.
- All field fabricated joints to be buttressed with mastic by erector.
- All glass, glazing, steel, wood blocking, caulking, shims and installation not by W.M.C.
- All cutting and fitting of special material if necessary to be done at job site not by W.M.C.
- This project will not be placed into production until architect and contractor have approved W.M.C. shop drawings.
- Erector to approve quantities, dimensions and installation details.
- Where aluminum comes in contact with dissimilar metal or masonry the contractor shall apply suitable mastic material between the joints.
- Tight glass and/or panel opening dimensions are given in good faith and W.M.C. cannot be held responsible for sizes.
- W.M.C. will not be responsible for errors incurred thru the use of these drawings by other trades.





A #2250-27 HEAD CHANNEL	6 @ 2'-7 3/4"	2-HOLES	W'STRIP	'204-R1'
	2 @ 4'-7 3/4"	4-HOLES		
	1 @ 3'-11 3/4"	2-HOLES		
	7 @ 3'-11 3/4"	3-HOLES		
	2 @ 3'-3 3/4"	3-HOLES		
B #2250-26 HEAD CHANNEL	6 @ 2'-7 3/4"	W'STRIP	'204-R1'	
	2 @ 4'-7 3/4"			
	1 @ 3'-11 3/4"			
	7 @ 3'-11 3/4"			
	2 @ 3'-3 3/4"			
C #2250-27 JAMB CHANNEL	16 @ 5'-5 1/2"	5/8" COPE 1-END BR-BL	4-HOLES	W'STRIP '204-R1'
	2 @ 3'-10 3/8"	NO COPE	3-HOLES	
	18 @ 3'-11"	5/8" COPE 1-HEAD 7R-7L	3-HOLES	
D #2250-26 JAMB CHANNEL	16 @ 5'-4 7/8"	W'STRIP	'204-R1'	
	20 @ 3'-10 3/8"			
A #12x1 1/4" PH PAN HD CAD SMS.		173	W/ MAS ANCHORS.	
B #12x1 1/2" PH FL HD CAD SMS.		47	W/ MAS ANCHORS.	
C #12x2 1/2" PH FL HD CAD SMS.		2	W/ MAS ANCHOR.	

Wausau Metals Corporation

P.O. Box 1308
Wausau, Wisconsin 54401
Telephone — 845-2161
Area Code — 715

Dr. NOREM	Date 11-1-76	CM's	Date
SCALE		SHEET NO. 2 OF 2	
Elev. <i>---</i>	Sec. FULL	JOB NO 10769	

THE FOLLOWING IS OUR INTERPRETATION OF JOB REQUIREMENTS AND SPECIFICATION AND CONSTITUTES FABRICATING INSTRUCTIONS TO THE SHOP. MATERIALS WILL BE FURNISHED AS SPECIFICALLY INDICATED.

SPECIFICATIONS:

MATERIAL - STEEL	THICKNESS	CONSTRUCTION
EXTERIOR FRAMES	16 GA.	Quality Steel
INTERIOR FRAMES	16 GA.	"
OTHER	GA.	"

CORNER JOINT CONSTRUCTION:

HEAD MEMBERS AND JAMB MEMBERS ARE FITTED TOGETHER. JAMBS OR TRIMS ARE MITERED, STOPS ARE BUTTED OR MITERED. JOINTS ARE SECURED MECHANICALLY AND/OR ARE WELDED AS FOLLOWS:

- TYPE I, JAMB-TO-JAMB FIELD ASSEMBLY: JAMBS ARE SECURED TO HEAD STOPS IN HEAD ASSEMBLY BY TIGHT JAMBS AND HEAD AND JAMB STOPS OVER IN HEAD TO INTERIOR AND HEAD ADJUSTMENT.
- TYPE II, SET UP AND WELDED: FACTORY ASSEMBLY: JAMB AND INTERLOCK JAMB TABS TO CORRESPONDING HEAD SLOTS. CLOSE ALL CONTACTS TIGHTLY. ALIGN TRIMS, TACK WELDS AT TABS, WELD BEAM JOINTS TOGETHER AND CONTINUOUSLY WELD INSIDE OR INTERIOR BEAM OF TRIM, EXTERIOR JOINT SHALL BE A BAILING SEAM.

HARDWARE: HARDWARE SCHEDULE PREPARED BY:

FRAMES AND/OR DOORS SHALL BE MORTISED, REINFORCED, DRILLED AND TAPPED FOR TEMPLATE HARDWARE IN ACCORDANCE WITH FINAL, APPROVED HARDWARE SCHEDULE, DATED:

FRAMES AND/OR DOORS SHALL BE REINFORCED ONLY FOR SURFACE APPLIED HARDWARE. FRAMES AND/OR DOORS SHALL BE MORTISED AND/OR REINFORCED ONLY FOR SURFACE APPLIED HARDWARE. ALL DRILLING AND TAPPING SHALL BE BY INSTALLERS IN THE FIELD.

SHOP PREPARATION FOR FLOOR MOUNTED AND ATTENDANT ACCESSORIES ON DOORS AND FRAMES SHALL CONSIST OF THE REQUIRED CUTOUTS AND REINFORCEMENTS ONLY. ALL DRILLING AND TAPPING FOR SUCH HARDWARE SHALL BE BY INSTALLERS IN THE FIELD TO PERMIT ADJUSTMENTS THAT ARE USUALLY REQUIRED AS A RESULT OF SLIGHT VARIATIONS IN OF THE FIELD POSITIONED FLOOR CLOSURE.

HINGE REINFORCEMENT:

- SUPERIOR STANDARD FOR 1 1/2" DOORS, WOOD OR HOLLOW METAL 12 GA. X 5" LONG.
- SUPERIOR STANDARD FOR 1 3/4" WOOD DOORS 7 GA. X 5" LONG.
- SUPERIOR STANDARD FOR 1 3/4" HOLLOW METAL DOORS 7 GA. X 10" LONG.

STRIKE REINFORCEMENT:

SUPERIOR STANDARD 12 GA. MINIMUM

CLOSERS, HOLDERS, CHECK REINFORCEMENTS:

SUPERIOR STANDARD 12 GA. X 1 1/2" X 10"

HEAD STIFFENERS OR REINFORCEMENTS:

NOT PERMITTED FOR LABEL FRAMES, NONE WILL BE PROVIDED. WILL BE SHIPPED LOOSE FOR ALL NON-LABELLED FRAMES REQUIRING SAME.

MORTAR COVERS OR GUST COVERS PROVIDED AT MASONRY WALLS ONLY:

SUPERIOR STANDARD 26 GA.

BUMPERS OR SILENCERS, FURNISHED BY OTHERS:

PROVIDE HEATER GUARDS (AT MASONRY WALLS ONLY).

QUANTITY PER FRAME, SINGLES, PAIRS

MFG. & TYPE

DOORS (FOR FRAMES ONLY) BY

TYPE

U.L. OR F.M. LABELLED FIRE RESISTIVE MATERIALS CAN ONLY BE FURNISHED WHEN THE REQUIREMENTS AND LIMITATIONS OF UNDERWRITERS LABORATORIES OR FACTORY MUTUAL ENG. DIVISION, INCLUDED IN E.P.D.'S, F.M. OR U.L. APPROVED PROCEDURES ARE MET, CONFORMANCE TO NFPA STANDARD 80 IS PART OF U.L. AND F.M. REQUIREMENTS.

SUPERIOR'S STANDARD CONSTRUCTION WILL BE FURNISHED WHERE LABELS CANNOT BE PROVIDED WHEN ARCHITECT'S DESIGNS OR REQUIREMENTS ARE IN CONFLICT WITH APPROVED LABEL PROCEDURES. DOORS AND FRAMES CONCLUDED WILL BE FURNISHED UNLABELLED, AND AS PER THE ARCHITECT'S DESIGNS.

WALL ANCHORS:

OF SIZE AND DESIGN SHOWN TO SUIT ADJOINING WALL CONSTRUCTION. QUANTITY AND LOCATION PER ELEVATION. SEE ILLUSTRATIONS. MASONRY ANCHORS, C.C. ADVISE EXACT BLOCK SIZES. TYPE "M"

STUD ANCHORS, C.C. ADVISE EXACT STUD SIZE, TYPE & MFG.

FLOOR KNEE OR ANGLE:

SUPERIOR STANDARD FIXED 16 GA. SEE DETAIL H

ADJUSTABLE 12 GA. SEE DETAIL

SPECIAL SEE DETAIL

STRUTS (EXTENDING):

NO. SPREADERS: SUPERIOR STANDARD 1" X 1" ANGLE TACK WELDED AT BOTTOM OF EACH JAMB. SHIPPING SPREADERS ARE NOT TO BE REMOVED UNTIL JAMBS ARE SECURED IN THE FIELD. IF FRAMES EXTEND BELOW FINISH FLOOR, SPREADERS MAY BE LEFT IN PLACE AFTER INSTALLATION.

NOTE: NO DRILLING OR TAPPING OF THE FOLLOWING SURFACE APPLIED ITEMS:

- 1- WEATHER STRIPPING NOT BY SUPERIOR
- 2- LIGHT SEALS NOT BY SUPERIOR
- 3- SOUND SEALS NOT BY SUPERIOR

PAINT FINISH: DRAFTSMAN BLANK OUT PORTIONS THAT DO NOT APPLY.

1- CLEAN AND DEBRASS ALL EXPOSED SURFACES INSIDE AND OUTSIDE OF FRAME.

2- BONDERIZE OR PARKERIZE (PHOSPHATE COAT) TO CHEMICALLY CONDITION METAL SURFACES TO IMPROVE PAINT ADHESION.

3- PRIMER: RED SUPERIOR STANDARD ENOP COAT RUST INHIBITIVE IRON OXIDE PRIMER

OTHER:

NOTE:

SCRATCHES, NICKS OR DENTS OR MARKING OF THE PAINT FILM OCCURRING AFTER MATERIAL LEAVES THE FACTORY, SHALL BE CLEANED AND TOUCHED UP IN THE FIELD BY OTHERS. GENERAL CONTRACTOR SHALL BE RESPONSIBLE FOR THE STORAGE, HANDLING AND PROTECTION OF THIS MATERIAL ON THE JOB.

SUPERIOR FIREPROOF DOOR CO. WILL NOT ACCEPT DESIGN RESPONSIBILITY FOR THE LOAD CARRYING CAPACITY OF OUR MATERIAL EITHER CALLED FOR OR IMPLIED.

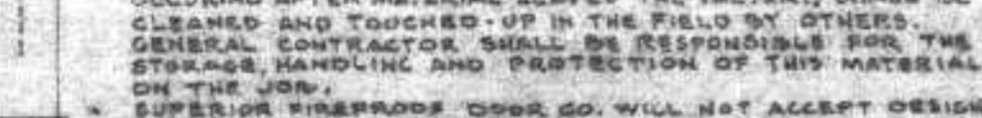
SUPERIOR FIREPROOF DOOR CO. WILL NOT BE LIABLE FOR ANY ERRORS OCCURRING TO OTHERS THROUGH THE USE OF THESE SCHEDULES OR DETAIL DRAWINGS OR DIMENSIONS.

SUPERIOR FIREPROOF DOOR CO. WILL REPLACE ANY MATERIAL MANUFACTURED IN ERROR, BUT WILL NOT BE RESPONSIBLE FOR ANY COSTS INCURRED BY ANY OTHER TRADE MAKING AN ERROR BECAUSE OF OUR ERROR.

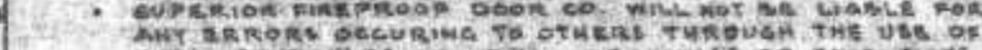
CORNER DETAIL:



HARDWARE PREPARATION:



HINGE MORTISE:



STRIKE MORTISE:



FOR HINGE OR STRIKE:



BOTTOM PIVOTS:



HARDWARE LOCATIONS:



FINISHED FLOOR OR TOP OF THRESHOLD

BELOW FLOOR WHEN REQUIRED (SEE SCHEDULE)

S.C. NOTE: DOORS WETHER OR NOT OPENINGS FOR WOOD OR H.W. DOORS WITH PIVOTS SIMILAR TO THAT SHOWN, WILL HAVE THRESHOLD OR NOT, ADVISE HEIGHT AND TYPE WHERE REQUIRED OR INDICATE "NO THRESHOLD" AT OPENINGS WITH PIVOT SHOW.

TWO HINGE REINFORCEMENTS SHALL BE PROVIDED FOR OPENINGS NOT EXCEEDING 60" IN HEIGHT AND AN ADDITIONAL REINFORCEMENT FOR EACH 30" OF HEIGHT OR FRACTION THEREOF. (U.L. LABEL REQUIREMENTS).

MASONRY ANCHOR LOCATIONS:



ARCHITECT PLEASE NOTE: HARDWARE AND ANCHOR LOCATIONS SHOWN ARE SUPERIOR STANDARD, IF OTHER LOCATIONS ARE REQUIRED, PLEASE INDICATE HEREON OR SUPERIOR STANDARD LOCATIONS WILL BE PROVIDED.

FLOOR ANCHOR:



FIELD BELOW FLOOR WHEN REQUIRED (SEE SCHEDULE) OPENING HEIGHT TO 7'-0"

OPENING HEIGHT TO 10'-0"

FLOOR ANCHOR:



FINISHED FLOOR

STUD ANCHOR LOCATIONS:



FINISHED FLOOR

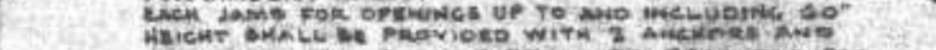
ADJUSTABLE

OPENING HEIGHT TO 7'-0"

OPENING HEIGHT TO 10'-0"

FOR MASONRY WALLS: EACH JAMB FOR OPENINGS UP TO AND INCLUDING 60" IN HEIGHT SHALL BE PROVIDED WITH 2 ANCHORS AND AN ADDITIONAL ANCHOR SHALL BE PROVIDED FOR EACH ADDITIONAL 30" OF HEIGHT OR PART THEREOF. (U.L. LABEL REQUIREMENTS).

FLOOR ANCHOR:



FINISHED FLOOR

STUD ANCHOR LOCATIONS:



ADJUST FLOOR ANGLE AS REQUIRED.

OPENING HEIGHT TO 7'-0"

OPENING HEIGHT TO 10'-0"

FOR STEEL STUD OR WOOD STUD WALLS: PROVIDE AT LEAST 2 (TO 7'-0" OPENING HEIGHT) OR 3 (OPENING HEIGHT OVER 7'-0" TO 10'-0") STUD ANCHORS ON EACH JAMB.

LOCATE STUD ANCHOR CLIPS ON HINGE JAMBS, IMMEDIATELY ABOVE EACH HINGE REINFORCING PLATE AND BELOW THE TOP REINFORCEMENT.

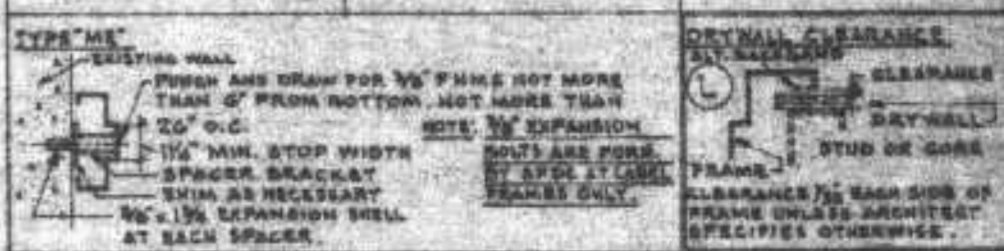
ON STRIKE JAMB - DIRECTLY OPPOSITE THOSE ON THE HINGE JAMB.

SECURELY WELD STUD ANCHOR CLIPS INSIDE THE JAMBS.

SECURE THE FRAME TO THE FLOOR WITH NO LESS THAN TWO (2) FASTENERS THIRD FLOOR ANCHOR CLIP AT THE BOTTOM OF EACH JAMB.

FOR WOOD STUDS THE FLOOR CLIP MAY BE OMITTED WHEN ONE ADDITIONAL WOOD STUD ANCHOR CLIP IS PROVIDED ON EACH JAMB WITHIN 6" OF THE FLOOR.

WALL ANCHOR TYPES: FOR MASONRY WALLS, C.C. ADVISE EXACT BLOCK SIZE.



FOR NON-MASONRY WALLS: C.C. ADVISE STUD TYPE, SIZE AND MANUFACTURER.

STEEL STUD:



SPICE PREPARATION FOR FIELD ASSEMBLY:



MULLION FLOOR ANCHOR:



ALL DOOR BUCKS SHALL BE KNOCK-DOWN FOR FIELD ASSEMBLY

KO OR WELDED JOINTS CONFORM TO OR EXCEED REQUIREMENTS OF COMMERCIAL STANDARDS GS-242-G2.

OVERSITE UNITS:

FACTORY PREPARED FOR FIELD SPlice AS NECESSARY TO PERMIT SHIPPING. OVERALL (OUTSIDE TRIM DIMENSION) MAXIMUM WIDTH 8'-0". MAXIMUM HEIGHT 8'-0". CONTRACTOR SHALL ADVISE AT ONCE IF FIELD CONDITION OTHERWISE LIMIT SIZE OF MAXIMUM PERMISSIBLE UNIT.

SEE ILLUSTRATION 'G' FOR SPlice

SEE ILLUSTRATION 'G' FOR SPlice

SEE ILLUSTRATION 'G' FOR SPlice

SEE ILLUSTRATION 'G' FOR SPlice

SEE ILLUSTRATION 'G' FOR SPlice

SEE ILLUSTRATION 'G' FOR SPlice

SEE ILLUSTRATION 'G' FOR SPlice

SEE ILLUSTRATION 'G' FOR SPlice

SEE ILLUSTRATION 'G' FOR SPlice

SEE ILLUSTRATION 'G' FOR SPlice

SEE ILLUSTRATION 'G' FOR SPlice

SEE ILLUSTRATION 'G' FOR SPlice

SEE ILLUSTRATION 'G' FOR SPlice

SEE ILLUSTRATION 'G' FOR SPlice

SEE ILLUSTRATION 'G' FOR SPlice

SEE ILLUSTRATION 'G' FOR SPlice

SEE ILLUSTRATION 'G' FOR SPlice

SEE ILLUSTRATION 'G' FOR SPlice

SEE ILLUSTRATION 'G' FOR SPlice

SEE ILLUSTRATION 'G' FOR SPlice

SEE ILLUSTRATION 'G' FOR SPlice

SEE ILLUSTRATION 'G' FOR SPlice

SEE ILLUSTRATION 'G' FOR SPlice

SEE ILLUSTRATION 'G' FOR SPlice

SEE ILLUSTRATION 'G' FOR SPlice

SEE ILLUSTRATION 'G' FOR SPlice

SEE ILLUSTRATION 'G' FOR SPlice

SEE ILLUSTRATION 'G' FOR SPlice

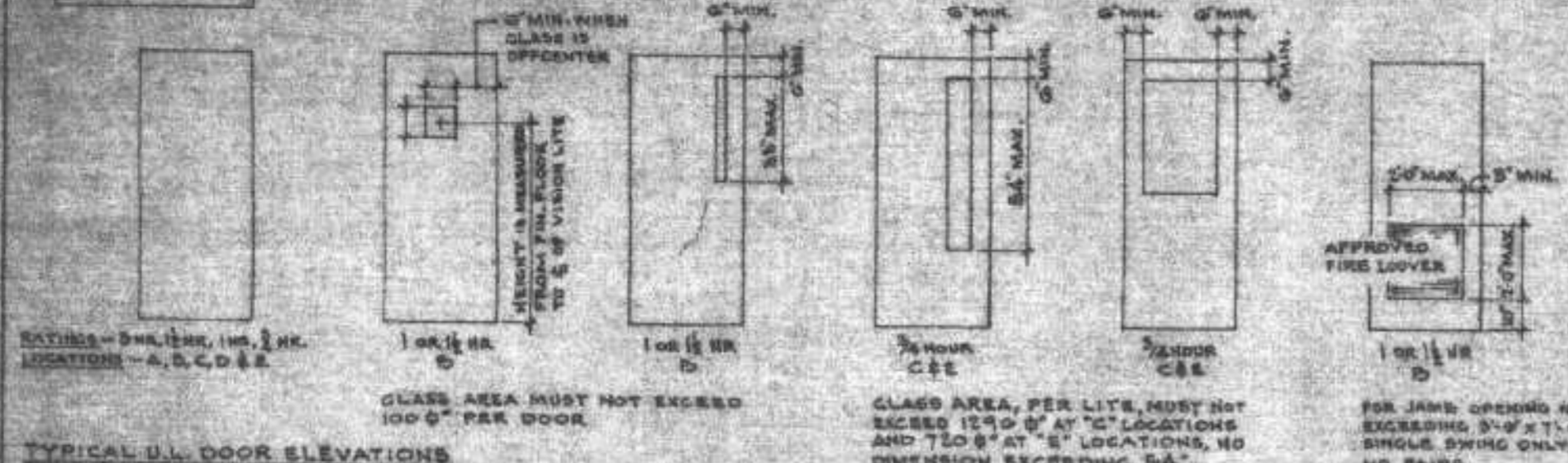
SEE ILLUSTRATION 'G' FOR SPlice

SEE ILLUSTRATION 'G' FOR SPlice

SEE ILLUSTRATION 'G' FOR SPlice

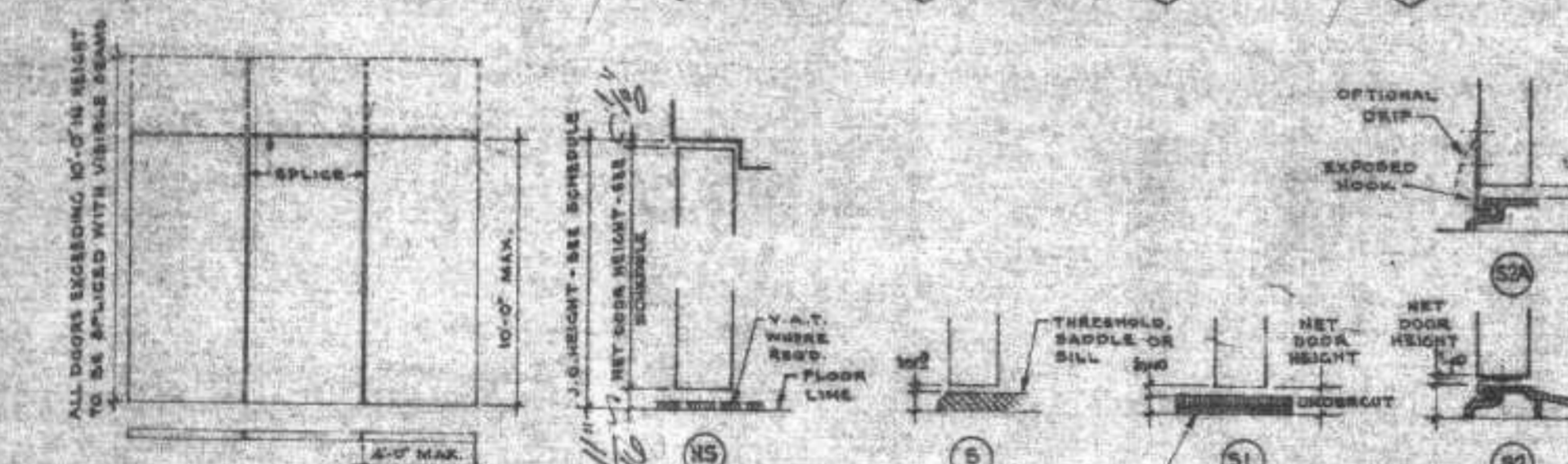
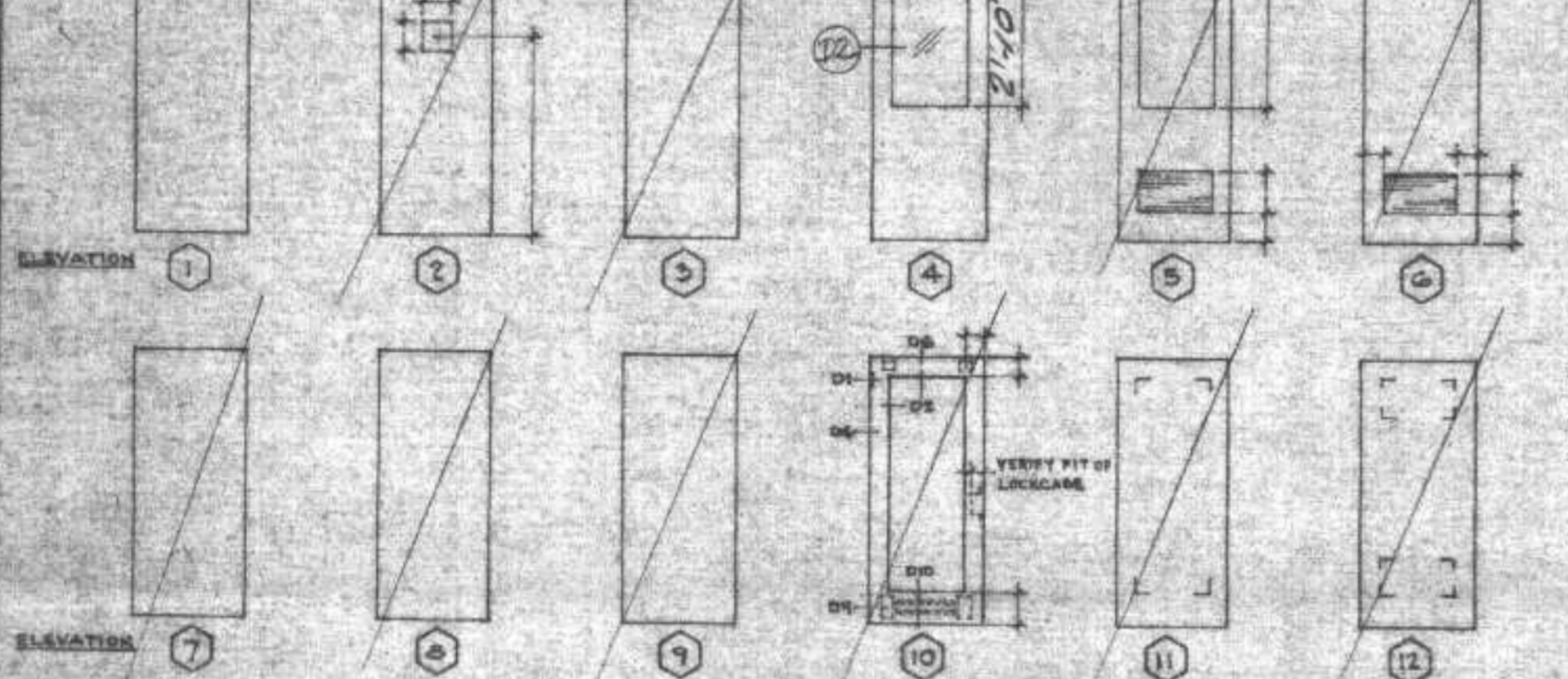
SEE ILLUSTRATION 'G' FOR SPlice

GLASS AND GLAZING BY OTHERS - SEE GLASS REQUIREMENTS FOR LABEL DOORS ON THIS PAGE FOR NFPA 80 STANDARDS



TYPICAL U.L. DOOR ELEVATIONS

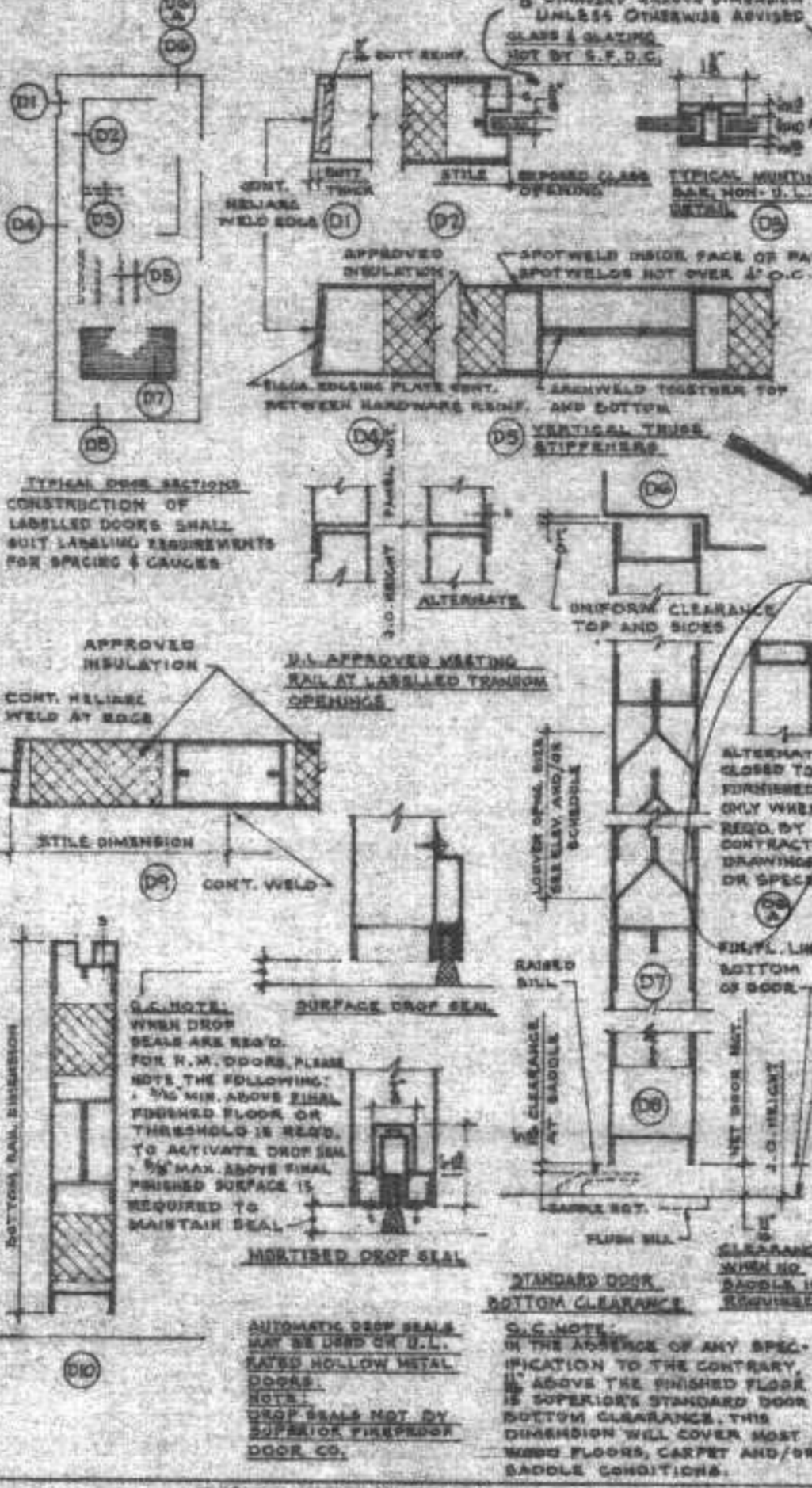
NOTE: ALL GLASS AND GLAZING BY OTHERS



NOTE: ALL DOORS, SLIDE OR SWING EXCEEDING 4'-0" IN WIDTH TO BE SPICED ACCORDINGLY WITH VISIBLE SEAMS.



MISC. DETAILS G.C. Note:



DOOR CONSTRUCTION

INTERNAL DOOR FACE - STEEL	1/8" GA.	CONSTRUCTION	1/8" GA. STEEL
EXTERIOR	1/8" GA.	GLASS	1/8" GA. STEEL
INTERIOR	1/8" GA.	INSULATION	MINERAL WOOL
INSULATION - MINERAL WOOL			
INTERNAL VERTICAL STIFFENERS 2" CA.			
TOP & BOTTOM CHANNEL	1/8" GA.		
REMOVABLE GLAZING STOPS	1/8" GA.		
LOUVER BLADES	1/8" GA.		
CLOSE TOPS AND BOTTOM OF HOLLOW METAL DOORS FLUSH			
HARDWARE REINFORCEMENTS: HINGES 7 GA.			
LOCKFACE SEAT	1/8" GA.		
SCOTCHLOCK	1/8" GA.		
BOLT SEAT	1/8" GA.		
GLOSER (SURFACE)	1/8" GA.		

NOTE: INSTALLER SHALL DRILL AND TAP HOLLOW METAL DOORS FOR ANY SURFACE APPLIED HARDWARE, NON-TEMPLATE HARDWARE AND/OR FLOOR CLOSERS. PAINT FINISH: DRAFTSMAN-BLANK DOOR PORTIONS THAT DO NOT APPLY PREPARATION: CLEAN PHOSPHATE GRAY SURFACE PRIMER: WEDOUT LEGATS GRAY RUST INHIBITIVE SWP COAT

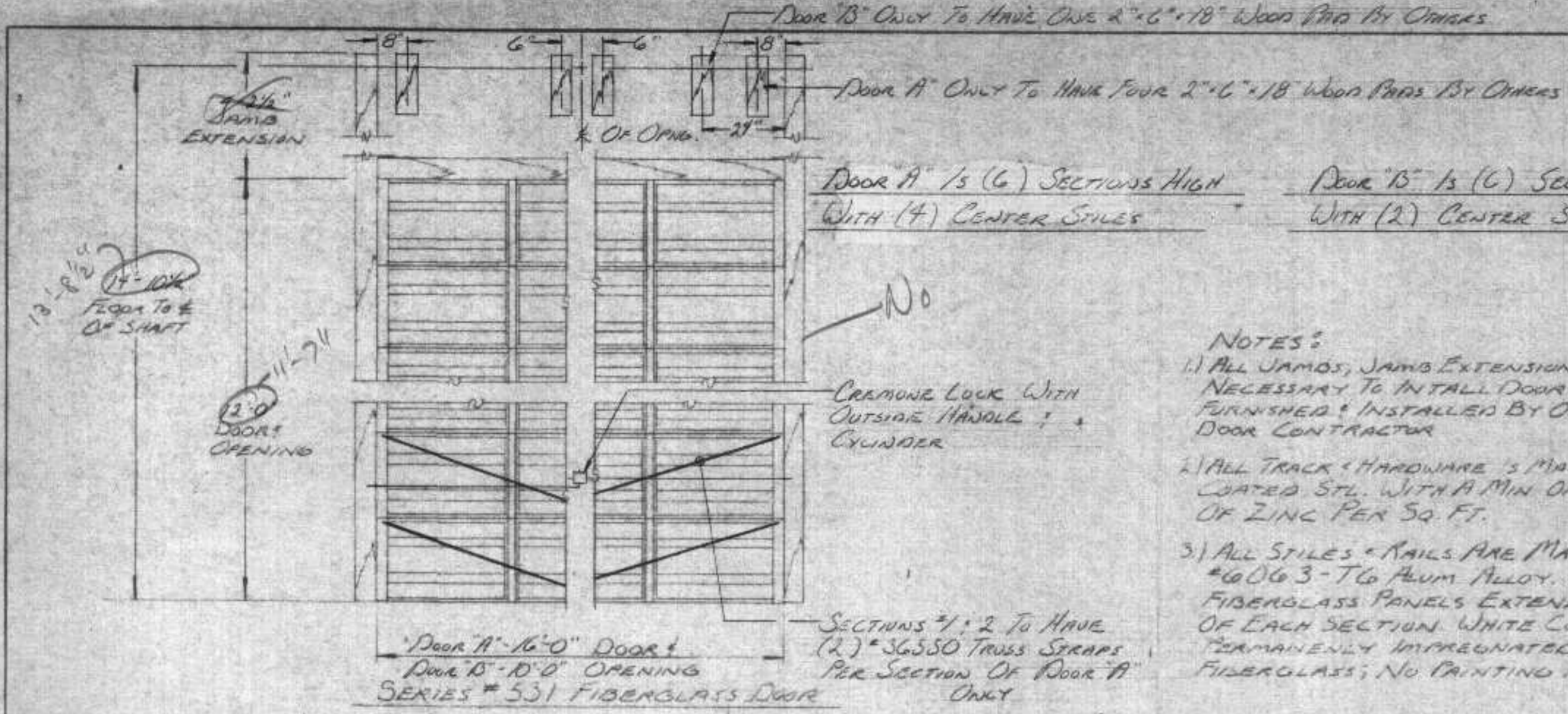
HARDWARE REQUIREMENTS FOR LABEL OPENINGS: ONE HINGE FOR EVERY 2'-0" OF HEIGHT OR TRACTION THEREOF. UNDERWRITER APPROVED LOCK OR LATCHING DEVICE. CLOSER FOR EACH ACTIVE DOOR LEAF. UNDERWRITER APPROVED ASTRAGAL AT ALL LABEL FAIR SWING DEVICES. AND ALL OTHER HARDWARE ITEMS SHALL BE U.L. LISTED AND LABELLED.

THE THROW OF SINGLE POINT LATCH BOLTS SHALL BE NOT LESS THAN 3/8" FOR SINGLE SWING DOORS FOR 'A' RATINGS; 1/2" FOR SINGLE SWING DOORS FOR 'B' RATINGS; 5/8" FOR SINGLE SWING DOORS - ALL RATINGS. FIRE DOOR BEARING FIRE DOOR TO BE EQUIPPED WITH FIRE EXIT HARDWARE LABEL ARE CONSTRUCTED AND BEING FORCED FOR EXIT HARDWARE WHICH SHALL BEAK THE U.L. 'FIRE EXIT HARDWARE' LABEL. ONLY HARDWARE SO LABELLED MAY BE USED ON THIS MATERIAL. MAXIMUM OPENING SIZE 1'-0" X 7'-2" FOR SWING, 3'-0" X 7'-2" SINGLE SWING. IF 1-POINT OR 3-POINT LOCKS ARE REQUIRED, THESE LOCKS MUST BE SHIPPED TO US AT 500 PROVIDENCE ROAD, SCRANTON, PA. FOR INSTALLATION INTO THE DOORS AT THE FACTORY. MARK EACH LOCK WITH OPENING NUMBER AND OUR JOB NUMBER AND JOB NAME FOR COMPLETE IDENTIFICATION.

LEVEL DOORS CANNOT RECEIVE THE FOLLOWING: DEADLOCKS (EXCEPT DEADLOCKS WITH ADDITIONAL LATCHING), PUSH AND PULL DOUBLE ACTING HARDWARE OR HOLD-OPEN DEVICE WITH OUT FUSIBLE LINKS, APPLIED VANSERS OR GLAZING, SUCH AS WOOD, POLYMER, STAINLESS STEEL, BRONZE, ETC., PREPARATION FOR DOUBLE MORTISE HINGES, UNDER-CUTTING OF DOORS EXCEEDING 3/4" MAX. ABOVE THE FIN. FLOOR WITH EITHER A RAISED OR FLUSH BILL.

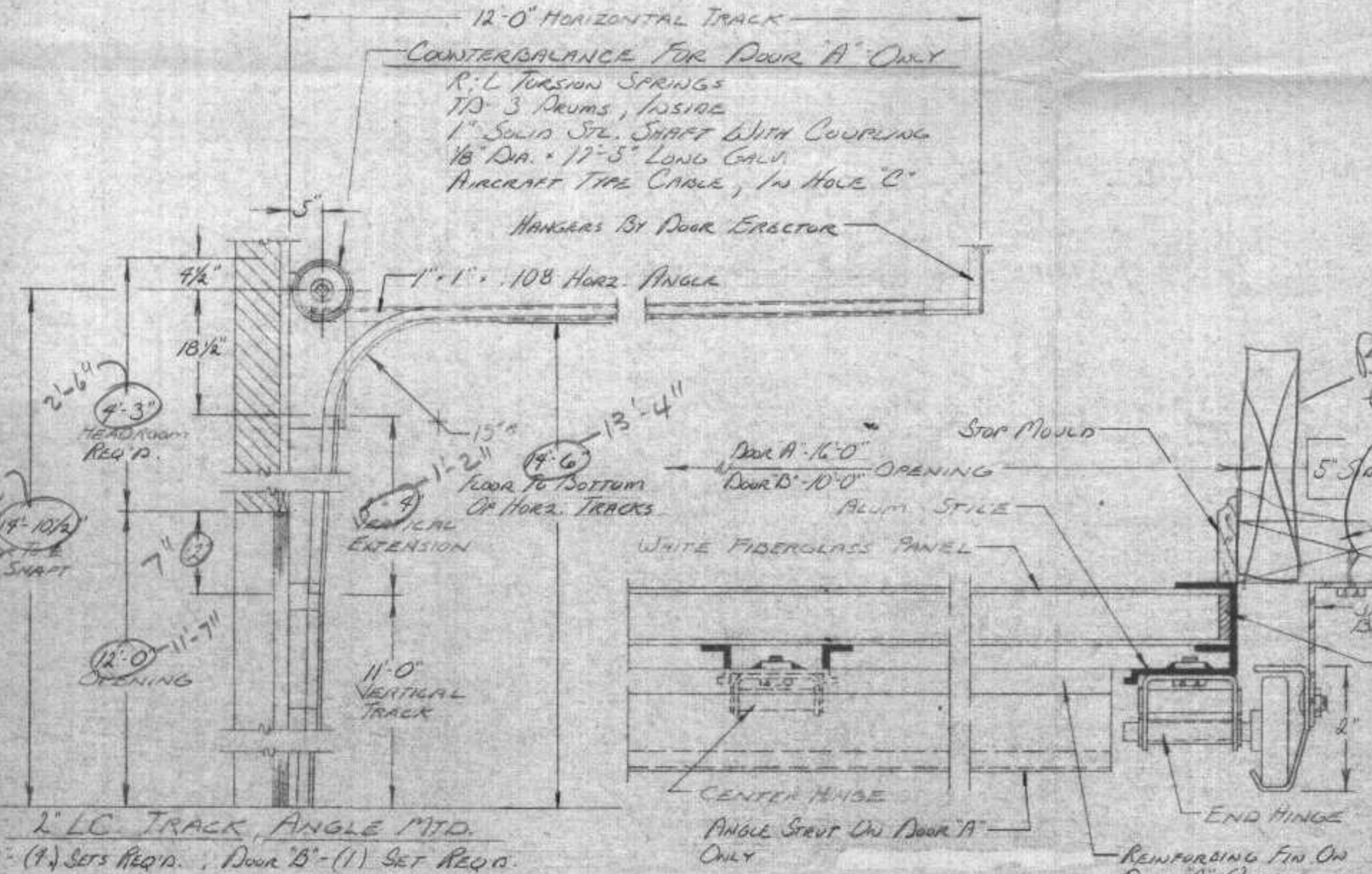
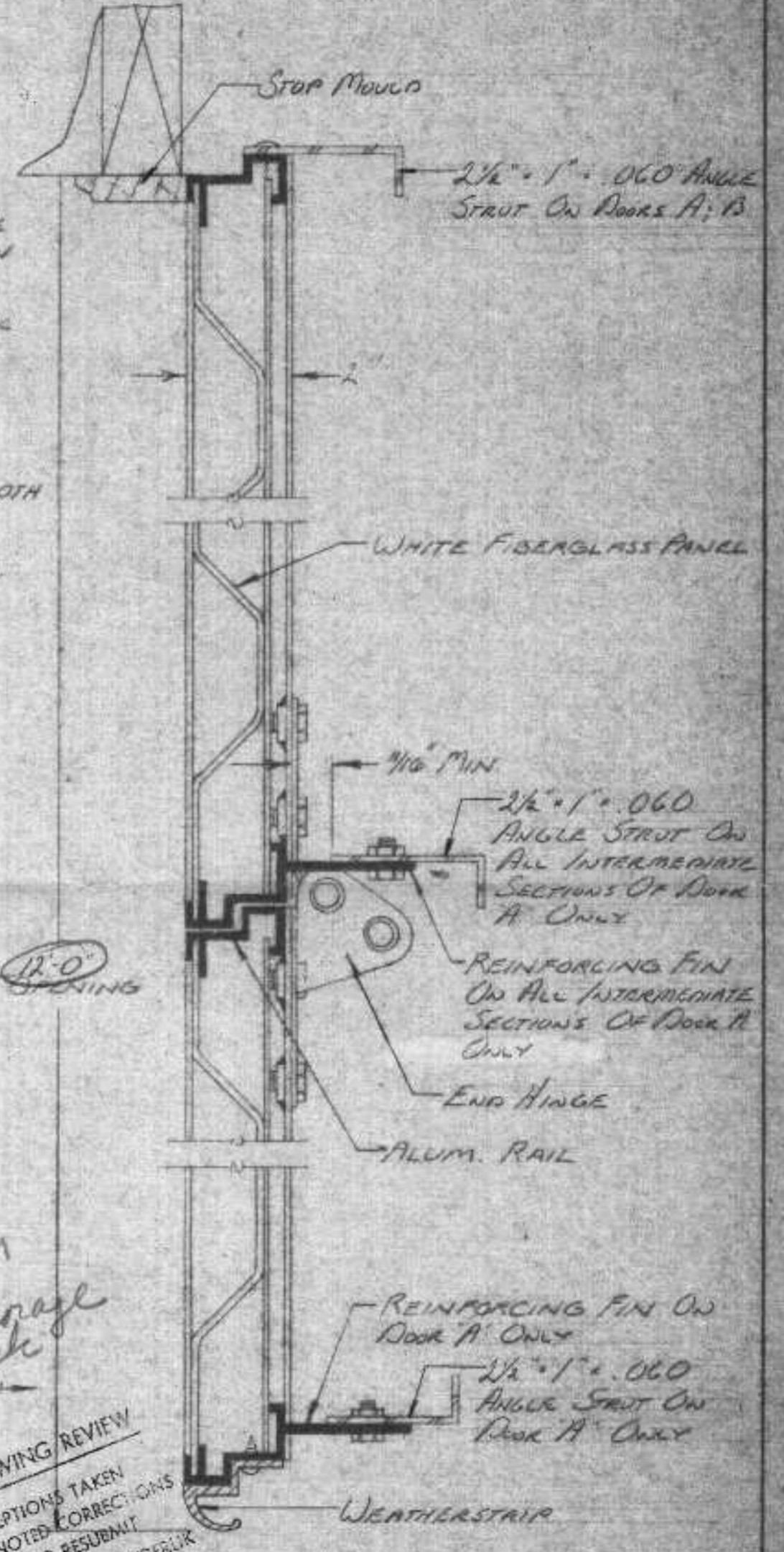
GLASS REQUIREMENTS FOR LABEL DOORS: SOURCE - NFPA 80, FIRE DOORS AND WINDOWS (907). NO GLASS SHALL BE USED FOR 3 HR (A) OR 1 HR (D) LOCATIONS. WHERE GLASS NOT LESS THAN 1/2" THICK MAY BE USED IN DOORS FOR 'B' (C) LOCATIONS WHEN THE GLASS FOR INDIVIDUAL EXPOSED AREAS (SEE LIT) DOES NOT EXCEED 12'0" X 7'0" WITH NO DIMENSION EXCEEDING 6'0". WHERE GLASS NOT LESS THAN 1/2" THICK MAY BE USED IN EACH DOOR OF A PAIR OF DOORS OR IN A SINGLE DOOR FOR 1 AND 1 1/2 HR (C) LOCATIONS WHEN THE EXPOSED GLASS AREA DOES NOT EXCEED 100 SQ. FT. PER INDIVIDUAL DOOR. THE GLASS SHALL BE WELL HATCHED WITH PUTTY AND ALL EXPOSED JOINTS BETWEEN METAL AND GLASS SHALL BE STRUCK AND POINTED. DEVICES USED TO VIEW THROUGH FIRE DOORS RATED 1 1/2 HR. OR LESS ARE PERMISSIBLE IF THEY REQUIRE A HOLE NO LARGER THAN 1" IN DIAMETER THROUGH THE DOOR. HAVE AT LEAST 1/2" THICK GLASS DISC AND ARE RETAINED IN A METAL FRAME WHICH WILL NOT MELT OUT WHEN SUBJECTED TO TEMPERATURES IN THE ORDER OF 1700 TO 1800 °F.

NOTE: LABEL DOORS AND FRAMES WILL BE FURNISHED ONLY WHEN THE ARCHITECT'S SCHEDULE SPECIFICALLY CALLS FOR SUCH MATERIAL TO BEAR A LABEL. CONSTRUCTION OF LABEL DOORS SHALL CONFORM TO LABEL PROCEDURE REQUIREMENTS FOR ELEVATIONS, SPACING AND GAUGES OR WEIGHT OF STIFFENERS, DOOR FACES, REINFORCEMENTS, INSULATION, ETC. LABELS CANNOT BE APPLIED TO NON-COMFORMING DOORS. LABEL TYPE CONSTRUCTION WILL BE FURNISHED WHERE LABELS CANNOT BE PROVIDED BECAUSE ARCHITECT'S DESIGN OR REQUIREMENTS ARE IN CONFLICT WITH APPROVED LABEL PROCEDURE. DOOR OR FRAMES CONCERNED WILL BE FURNISHED UNLABELLED AND AS PER THE ARCHITECT'S DESIGN.



INSIDE ELEVATION

- NOTES:
- 1) ALL JAMBS, JAMB EXTENSIONS & PADS NECESSARY TO INSTALL DOORS SHALL BE FURNISHED & INSTALLED BY OTHER THAN DOOR CONTRACTOR
 - 2) ALL TRACK & HARDWARE IS MADE OF ZINC COATED STL. WITH A MIN OF 1.25 OZ OF ZINC PER SQ. FT.
 - 3) ALL STILES & RAILS ARE MADE OF #6006 3-T6 ALUM ALLOY. RIBBED FIBERGLASS PANELS EXTEND FULL WIDTH OF EACH SECTION. WHITE COLOR IS PERMANENTLY IMPREGNATED INTO FIBERGLASS; NO PAINTING NECESSARY



JAMB DETAIL

Buck was this direction

Provide anchorage for track

5' SPACER ROOM REQ'D.

SHOP DRAWING REVIEW

NO EXCEPTIONS TAKEN

MAKE NOTED CORRECTIONS

AMEND AND RESUBMIT

HONESTROO, ROSENE, ANDERLIK & ASSOCIATES, INC.

Date 8/17/77

SECTION DETAIL

PROPRIETARY RIGHTS

THIS DRAWING AND ALL TECHNICAL INFORMATION ON THIS SHEET IS THE PROPERTY OF OVERHEAD DOOR CORPORATION OR ITS SUBSIDIARY AND IS LOANED IN CONFIDENCE FOR ENGINEERING AND MUTUAL ASSISTANCE PURPOSES ONLY AND MAY NOT BE REPRODUCED OR USED TO MANUFACTURE ANYTHING DISCLOSED HEREON WITHOUT THE EXPRESS PERMISSION OF OVERHEAD DOOR CORPORATION WHICH MAY RECALL THIS SHEET AT ANY TIME.

JOB NAME	COMBINED SEWER OVERFLOW PLANT
DISTRIBUTOR	OHDO Co. Of Duluth
OUR ORDER #	B-70329:80
DET. #	1812 A; B QUOTE #
ARCHITECT	
CONTRACTOR	KROYS ANDERSON CONST.

THE OVERHEAD DOOR

the original

OVERHEAD DOOR COMPANY, INDIANA

Hartford City, Indiana

Engineering Department

DATE	REV	DRAWN BY
7-29-77	A	R
		DATE
		7-29-77
		DRAWING #
		CF-1187
		SHEET 1 OF 1
DO NOT SCALE DRAWING		

Door "B" Only To Have One 2" x 6" x 18" Wood Part By Others

Door "A" Only To Have Four 2" x 6" x 18" Wood Parts By Others

Door "A" Is (6) SECTIONS HIGH WITH (4) CENTER STILES

Door "B" Is (6) SECTIONS HIGH WITH (2) CENTER STILES

14'-5 1/2" Floor To E of Shaft

12'-0" Door Opening

CRIMSON LOCK WITH OUTSIDE HANDLE & CYLINDER

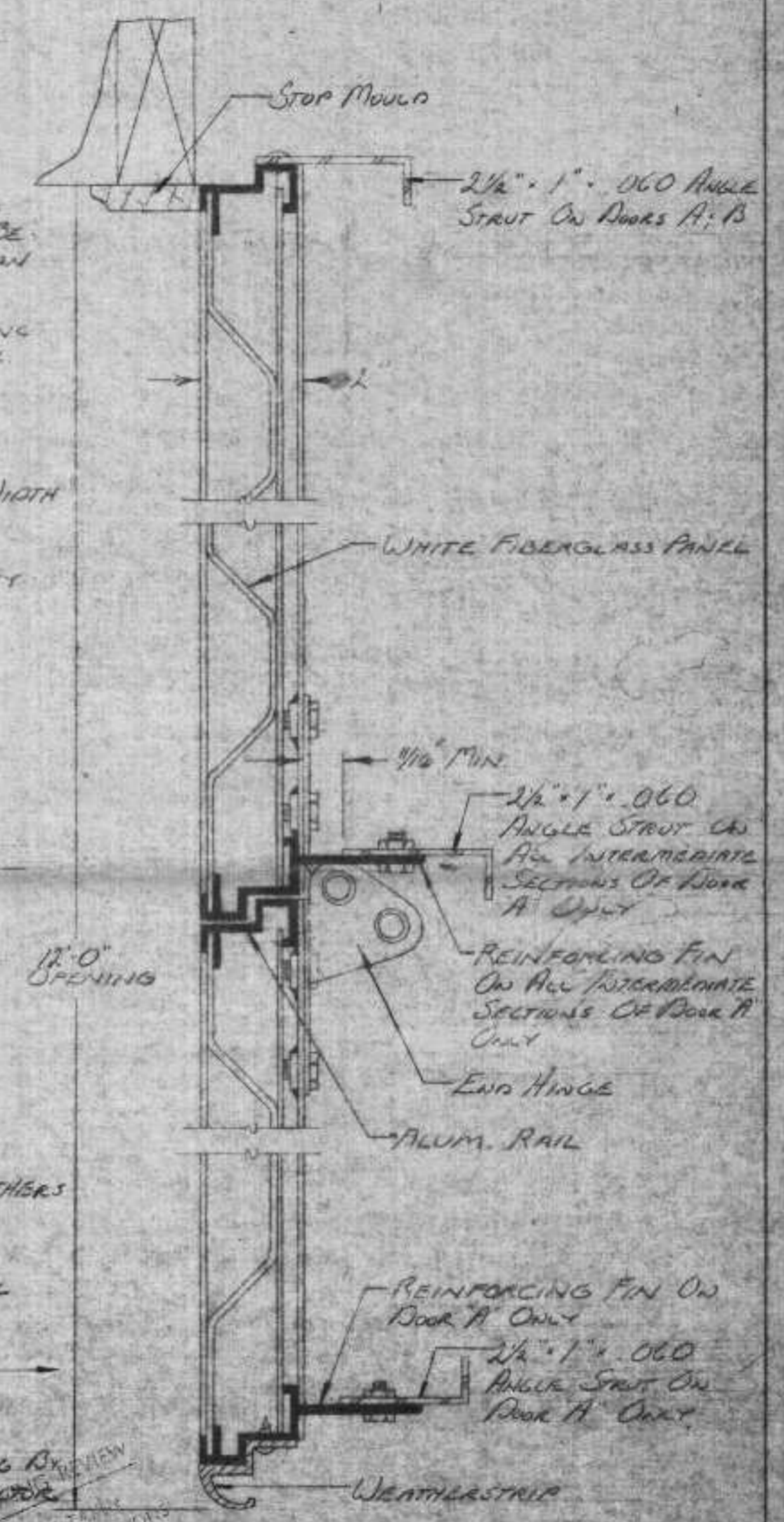
Door "A" - 16'-0" DOOR
Door "B" - 10'-0" OPENING
SERIES # 531 FIBERGLASS DOOR ONLY

Door "A" - (4) REQ'D., Door "B" - (1) REQ'D.

INSIDE ELEVATION

NOTES:

- 1) ALL JAMBS, JAMB EXTENSIONS & PARTS NECESSARY TO INSTALL DOORS SHALL BE FURNISHED & INSTALLED BY OTHER THAN DOOR CONTRACTOR
- 2) ALL TRACK HARDWARE IS MADE OF ZINC COATED STL. WITH A MIN. OF 1.25 Oz. OF ZINC PER SQ. FT.
- 3) ALL STILES & NAILS ARE MADE OF 6063-T6 ALUM. ALLOY. RIBBED FIBERGLASS PANELS EXTEND FULL WIDTH OF EACH SECTION. WHITE COLOR IS PERMANENTLY IMPREGNATED INTO FIBERGLASS; NO PAINTING NECESSARY.



COUNTERBALANCE FOR DOOR "B" ONLY

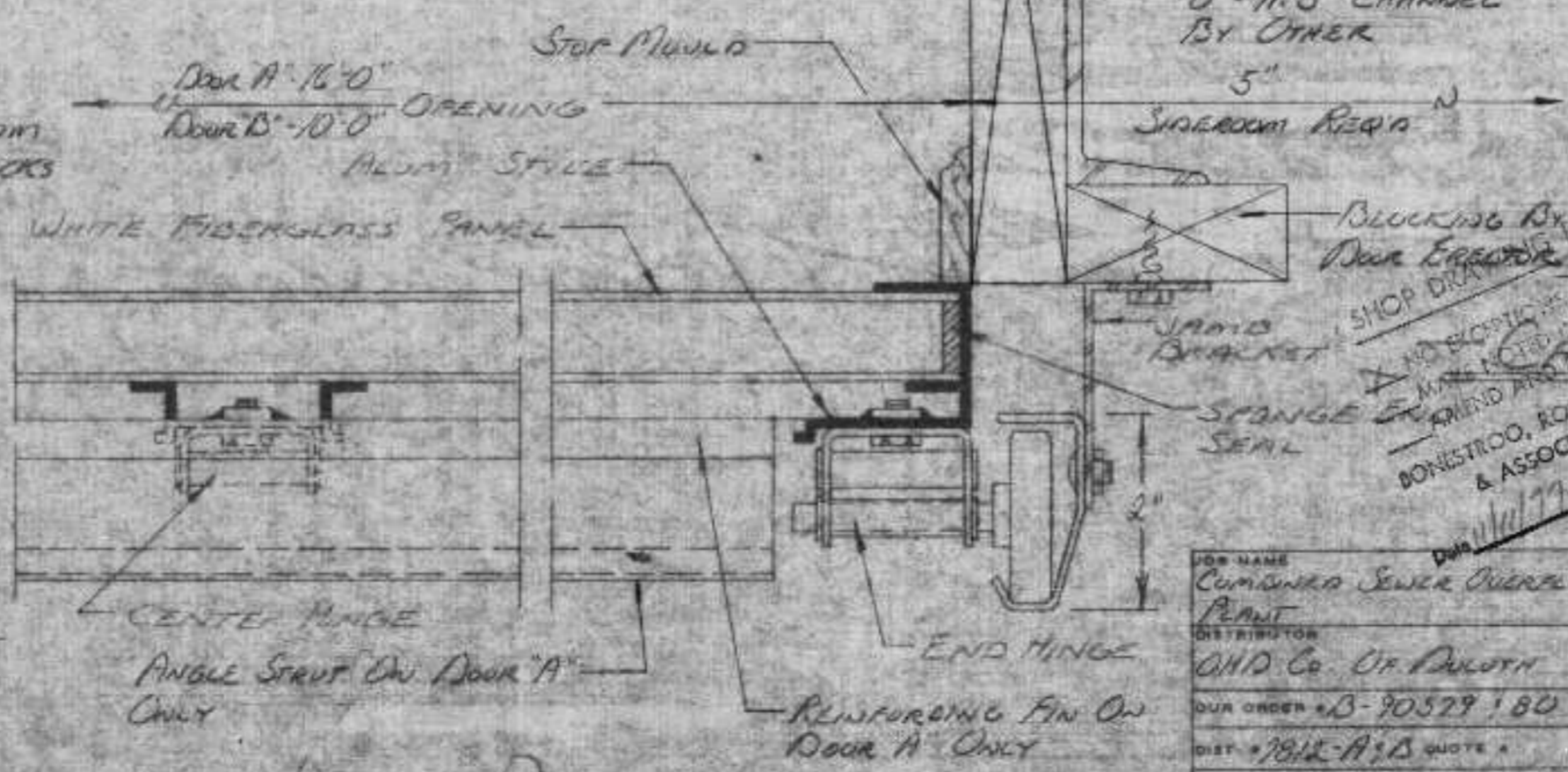
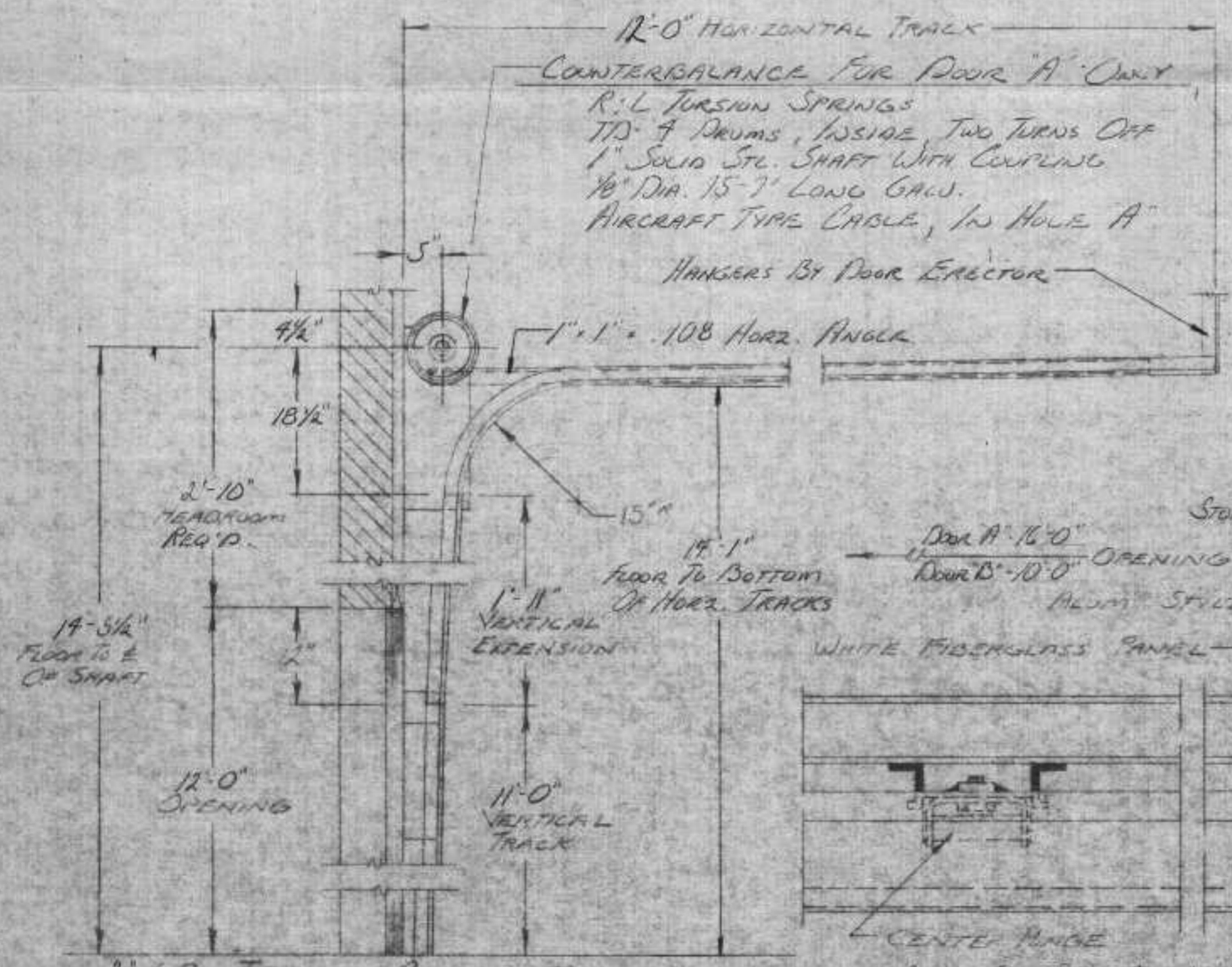
SINGLE TORSION SPRING
TD-4 DRUMS, INSIDE, TWO TURNS OFF
1/2" SOLID STL. SHAFT WITH COUPLING
1/8" DIA. 15'-7" LONG GALV.
AIRCRAFT TYPE CABLE

COUNTERBALANCE FOR DOOR "A" ONLY

R.L. TORSION SPRINGS
TD-4 DRUMS, INSIDE, TWO TURNS OFF
1" SOLID STL. SHAFT WITH COUPLING
1/8" DIA. 15'-7" LONG GALV.
AIRCRAFT TYPE CABLE, IN HOLE "A"

HANGERS BY DOOR ERECTOR

1" x 1" x 108 HORIZ. ANGLE



2" LG. TRACK ANGLE MTD.

ANGLE STRUT ON DOOR "A" ONLY

Door "A" - (4) SETS REQ'D., Door "B" - (1) SET REQ'D.

TRACK DETAIL

JAMB DETAIL

JOB NAME	Combined Sewer Overhead
PLANT	
DISTRICT	OHIO Co. OF DAYTON
OUR ORDER #	B-90579, 80
DIST.	#1812-A/B QUOTE #
ARCHITECT	
CONTRACTOR	ANDY'S ANGLEWORK CO.

OVERHEAD DOOR
the original
OVERHEAD DOOR COMPANY OF INDIANA
Munster City, Indiana
Engineering Department

DATE	REV	DRAWN BY
7-29-77	A	JR
8-1-77	B	
		DATE
		7-29-77
		ORDER #
		CF-1184
		SHEET 1 OF 1

PROPRIETARY RIGHTS
THIS DRAWING AND/OR TECHNICAL INFORMATION ON THIS SHEET IS THE PROPERTY OF OVERHEAD DOOR CORPORATION OR ITS SUBSIDIARY AND IS LOANED IN CONFIDENCE FOR ENGINEERING AND MUTUAL ASSISTANCE PURPOSES ONLY AND MAY NOT BE REPRODUCED OR USED TO MANUFACTURE ANYTHING WITHOUT THE WRITTEN PERMISSION OF OVERHEAD DOOR CORPORATION WHICH MAY RECALL THIS SHEET AT ANY TIME.