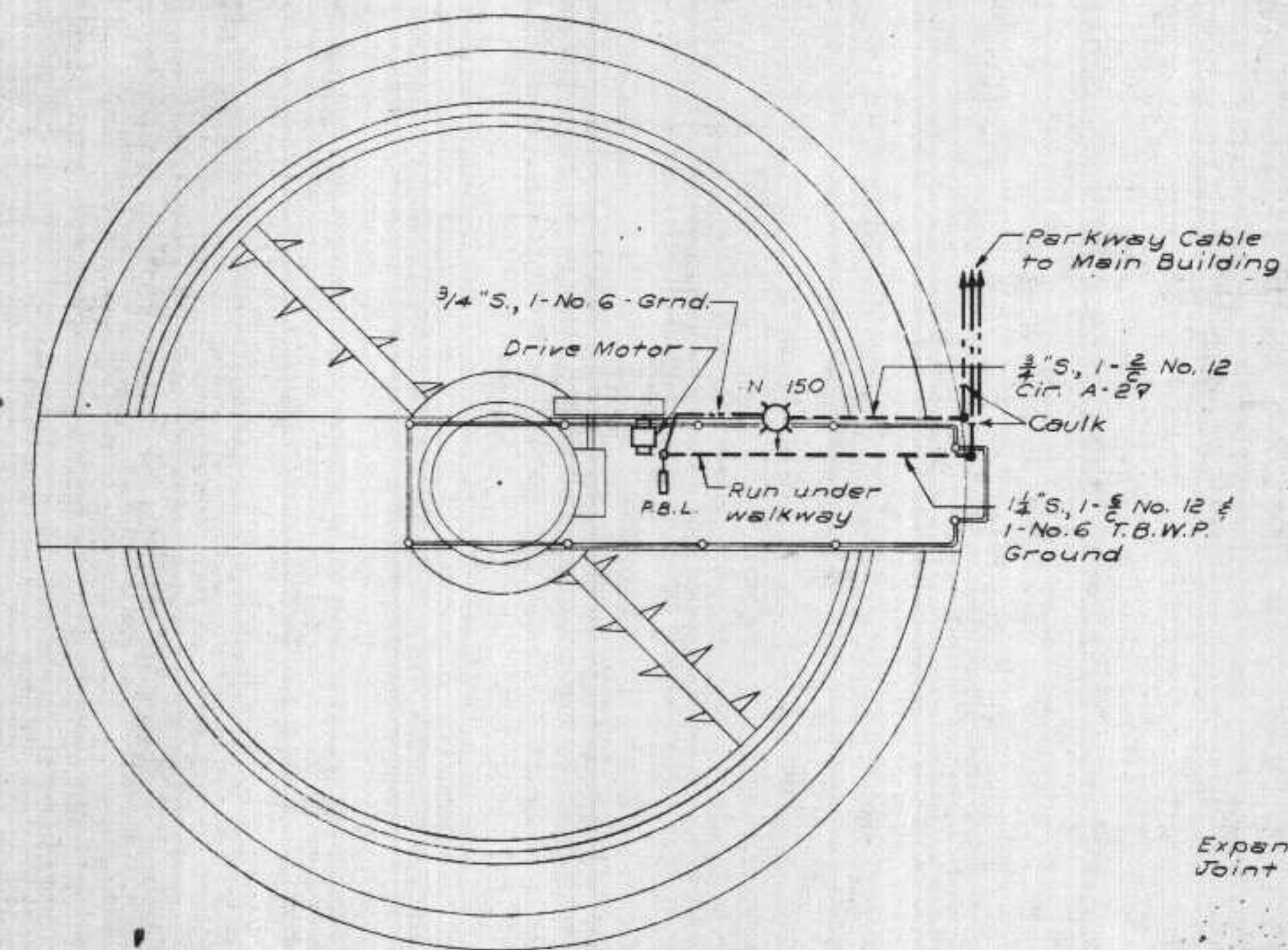
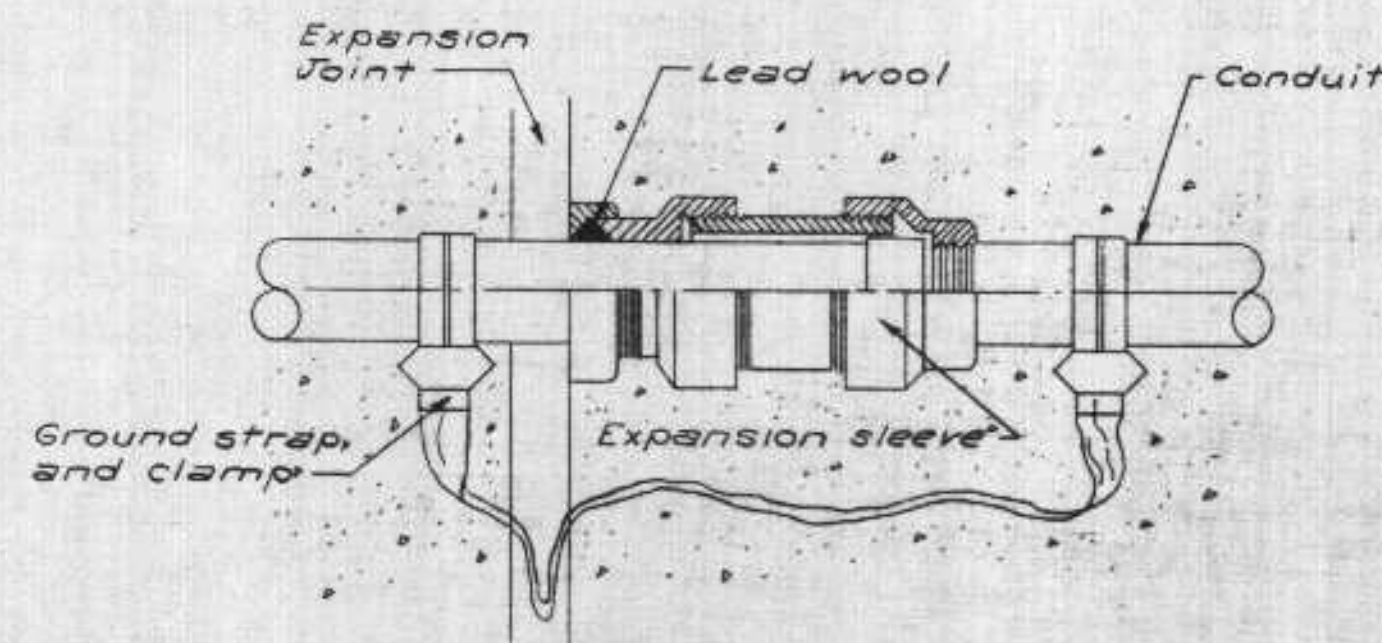


SEDIMENTATION TANKS  
SCALE:  $\frac{1}{4}'' = 1'-0''$



ELUTRIATION TANK  
SCALE:  $\frac{1}{4}'' = 1'-0''$



DETAIL - EXPANSION SLEEVE  
NO SCALE

Note: Arrows on type "N" fixtures indicate direction of maximum distribution. Type "N" fixtures switched at Lighting Panel "A" Main Operating Building.

DEPARTMENT OF HEALTH, EDUCATION, AND WELFARE  
PUBLIC HEALTH SERVICE  
These Plans and Specifications are submitted in connection with an Application for a permit to construct and install a Sewage Treatment Plant at the location shown on the attached map and are hereby approved insofar as they conform to the provisions of the Sanitary Code and the regulations promulgated thereunder have been reviewed.  
\_\_\_\_\_  
(Reviewing Engineer) (Date)  
and are hereby APPROVED  
\_\_\_\_\_  
(Regional Engineer) (Date)  
Region V, Chicago, Illinois

EXAMINED and reported upon by the Section on Environmental Sanitation  
O. J. MUEGGE  
State Sanitary Engineer  
APPROVED by the State Board of Health, as required by Wisconsin Statutes, subject to conditions set forth in the letter of approval  
JUL 6 1955  
CARL N. NEUFERT, M. D.  
State Health Officer  
Verification *[Signature]*

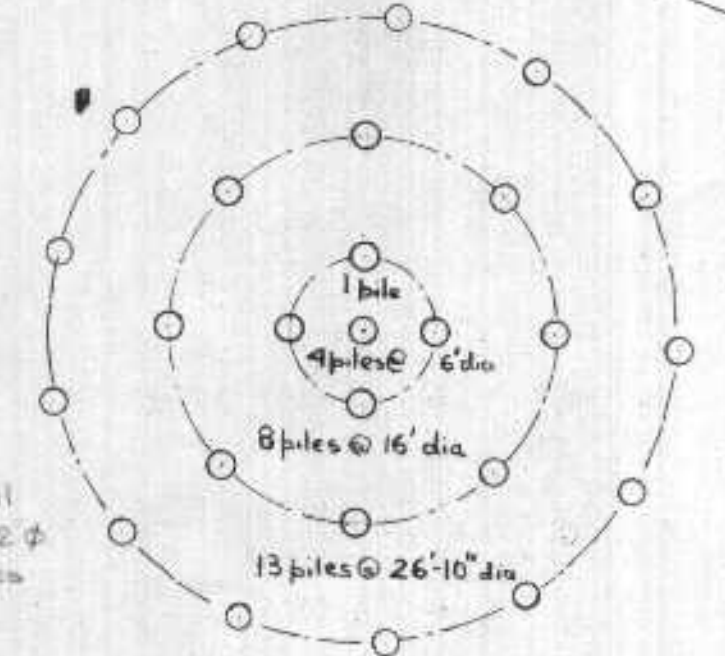
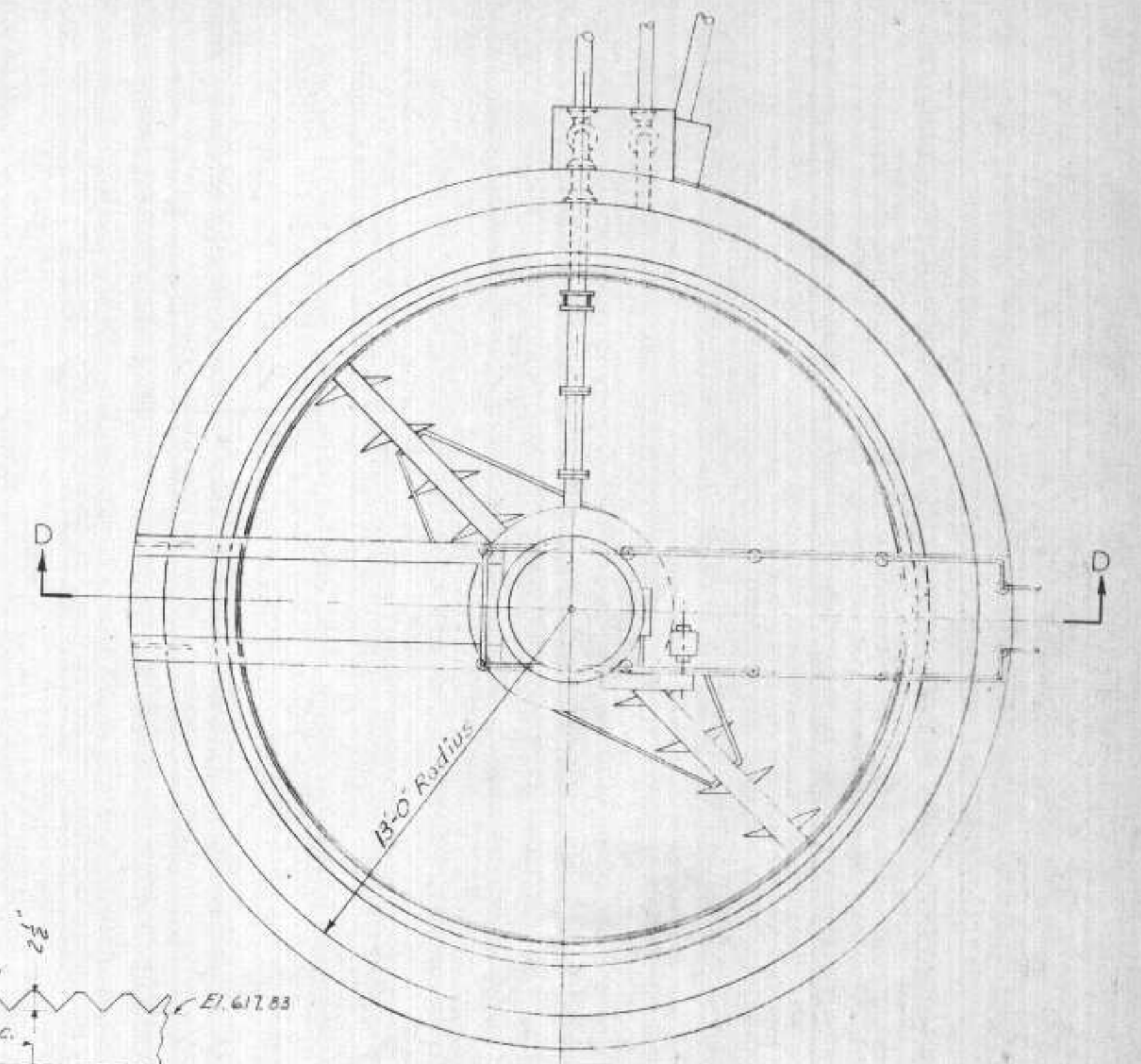
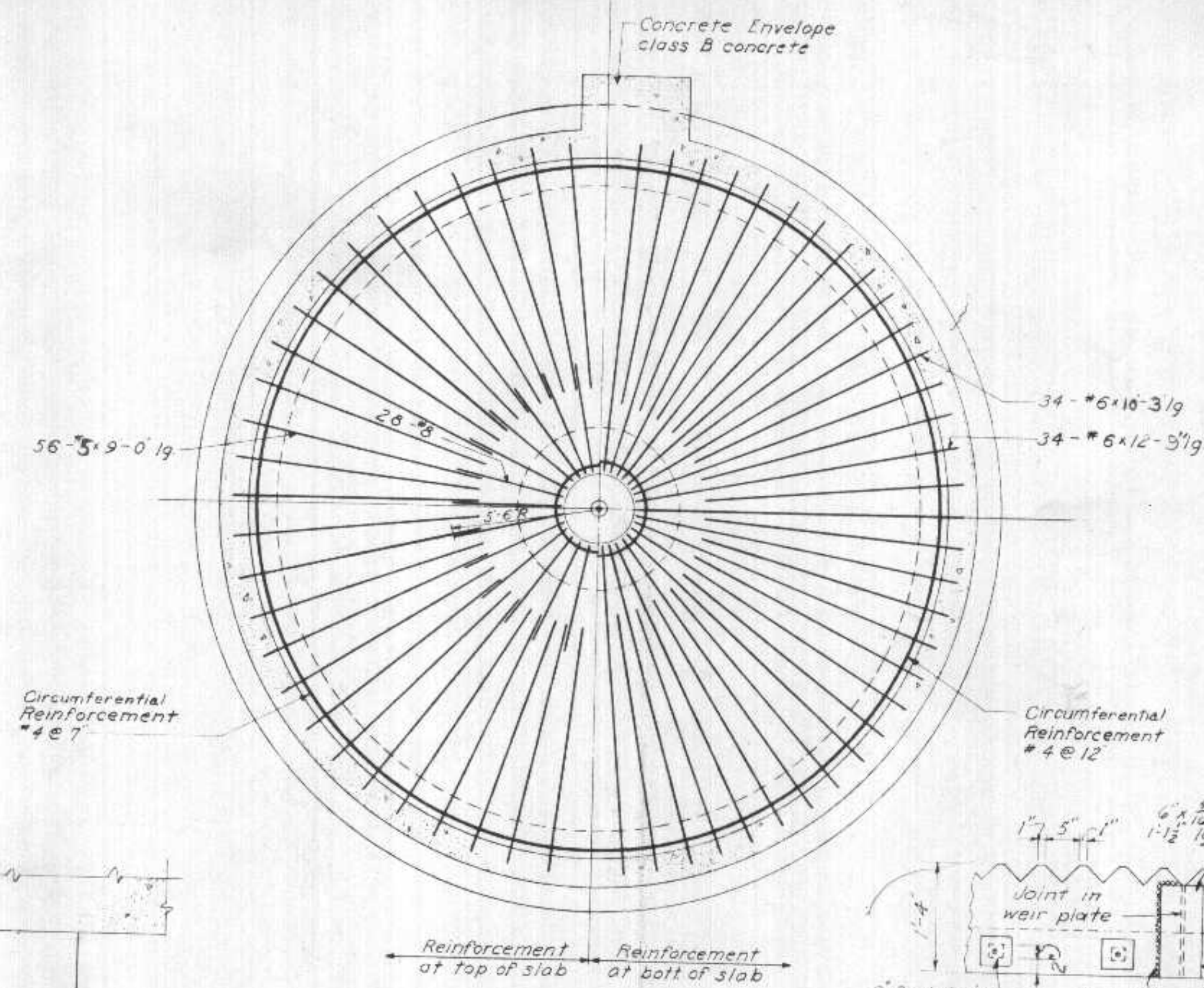
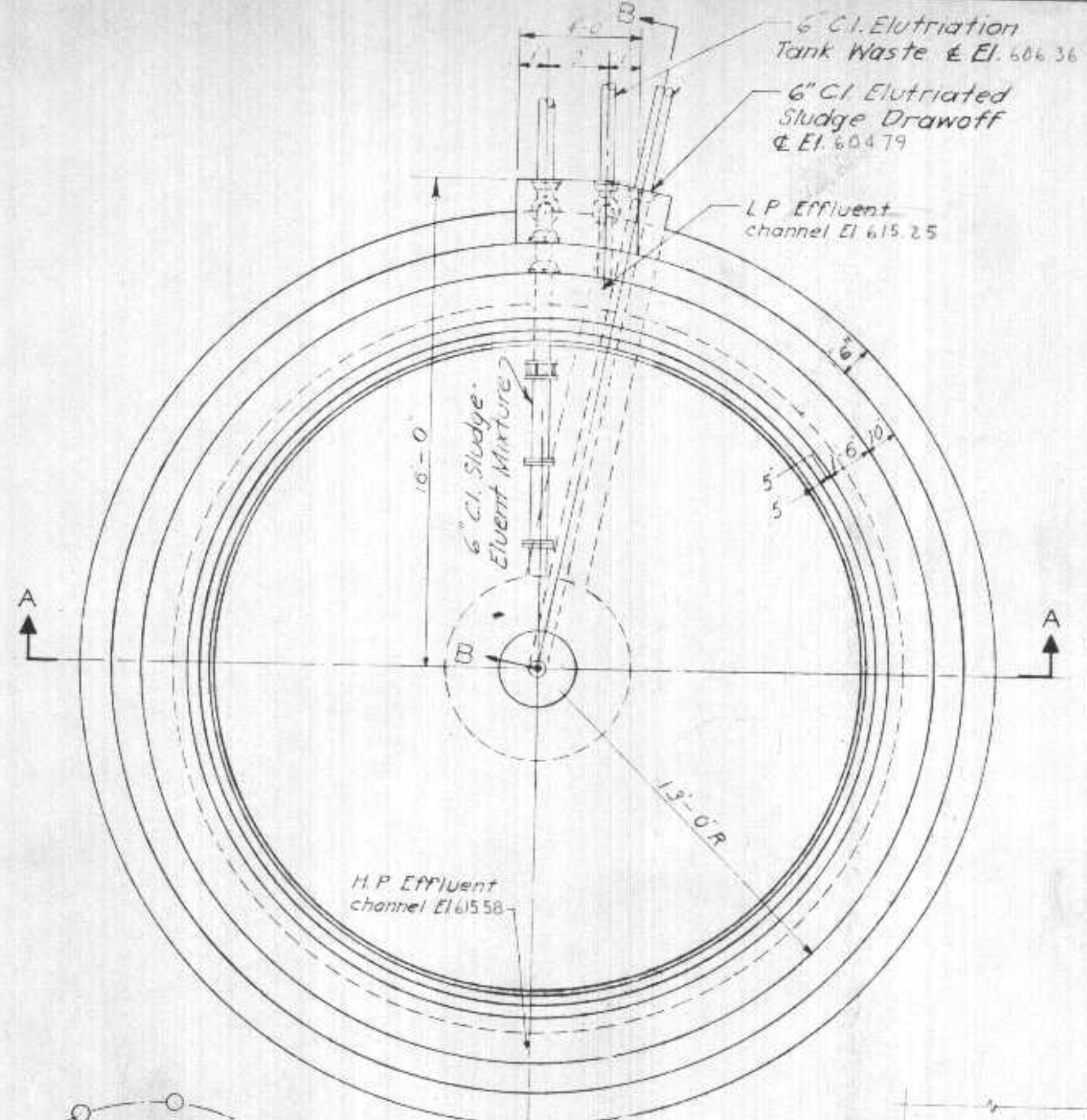
**SUPERIOR-WIS**  
**SEWAGE TREATMENT PLANT**  
**ELUTRIATION TANK - SEDIMENTATION TANKS**  
**ELECTRICAL**

APPROVED *[Signature]*  
FOR METCALF & EDDY, ENGINEERS  
DATE

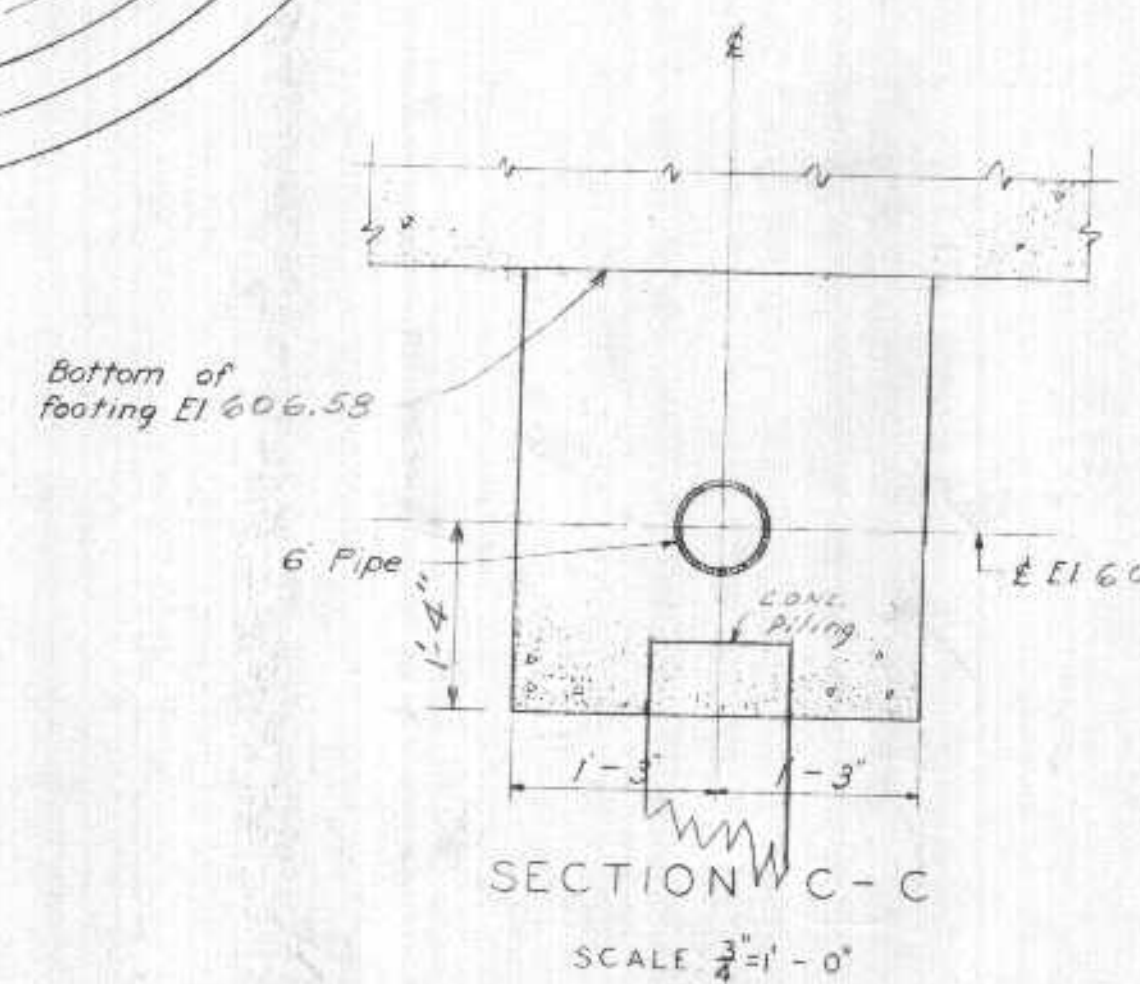
SCALE, AS SHOWN  
METCALF & EDDY  
ENGINEERS  
BOSTON, MASS.  
HITCHCOCK & ESTABROOK  
ENGINEERS  
MINNEAPOLIS, MINN.

DRAWN BY R.N.C.  
TRACED BY R.N.C.  
CHECKED BY [Signature]



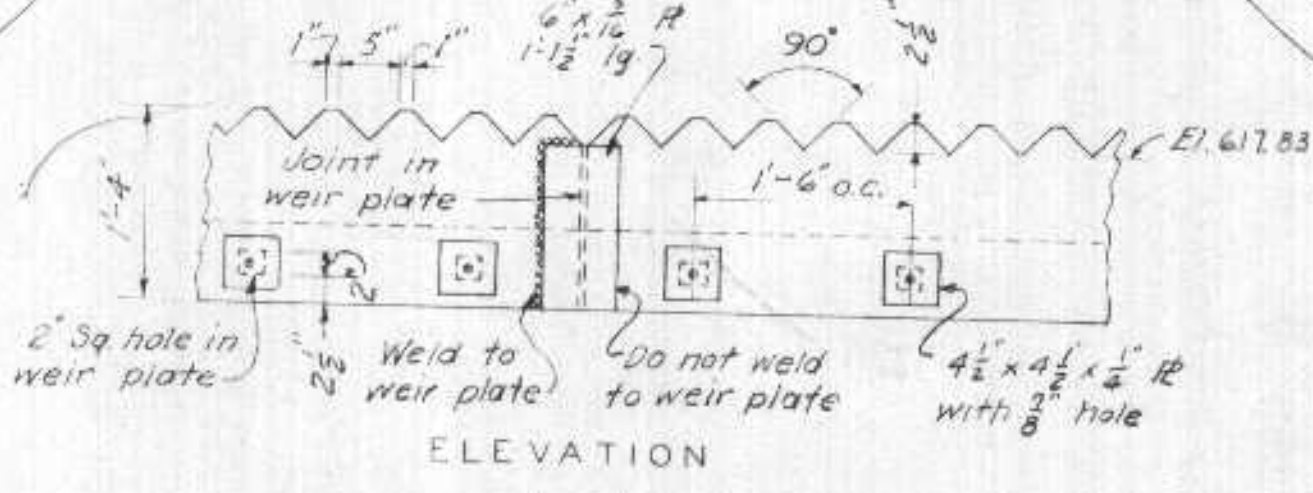


PLAN SCALE 1/4" = 1'-0"

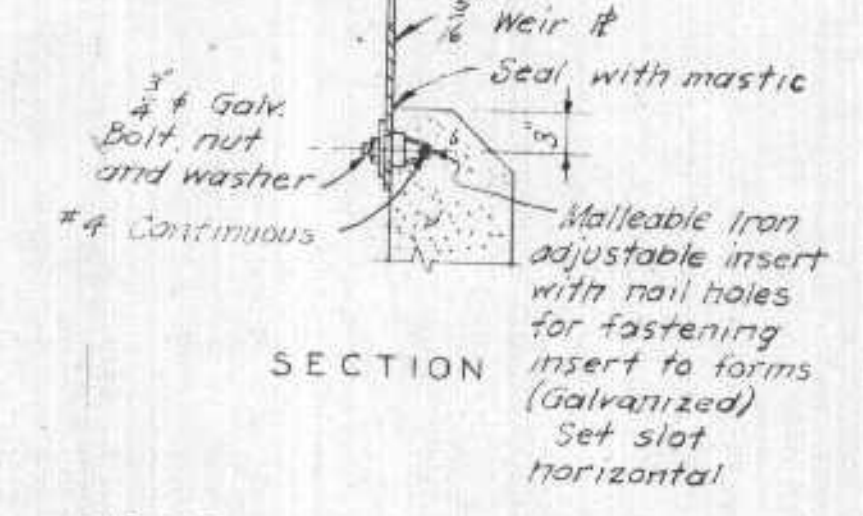


SECTION C-C SCALE 3/4" = 1'-0"

SLAB REINFORCEMENT PLAN SCALE 1/4" = 1'-0"

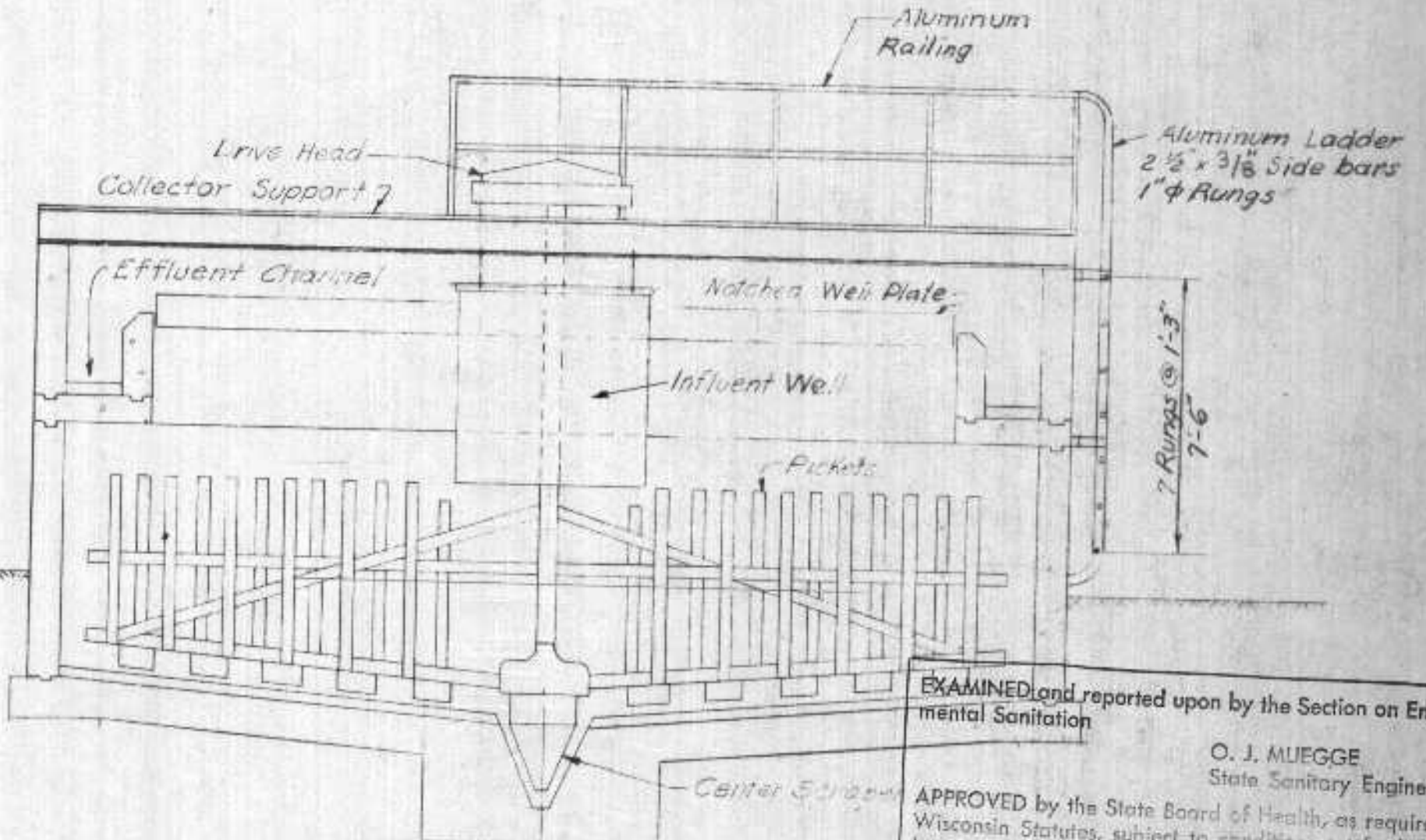


ELEVATION



SECTION

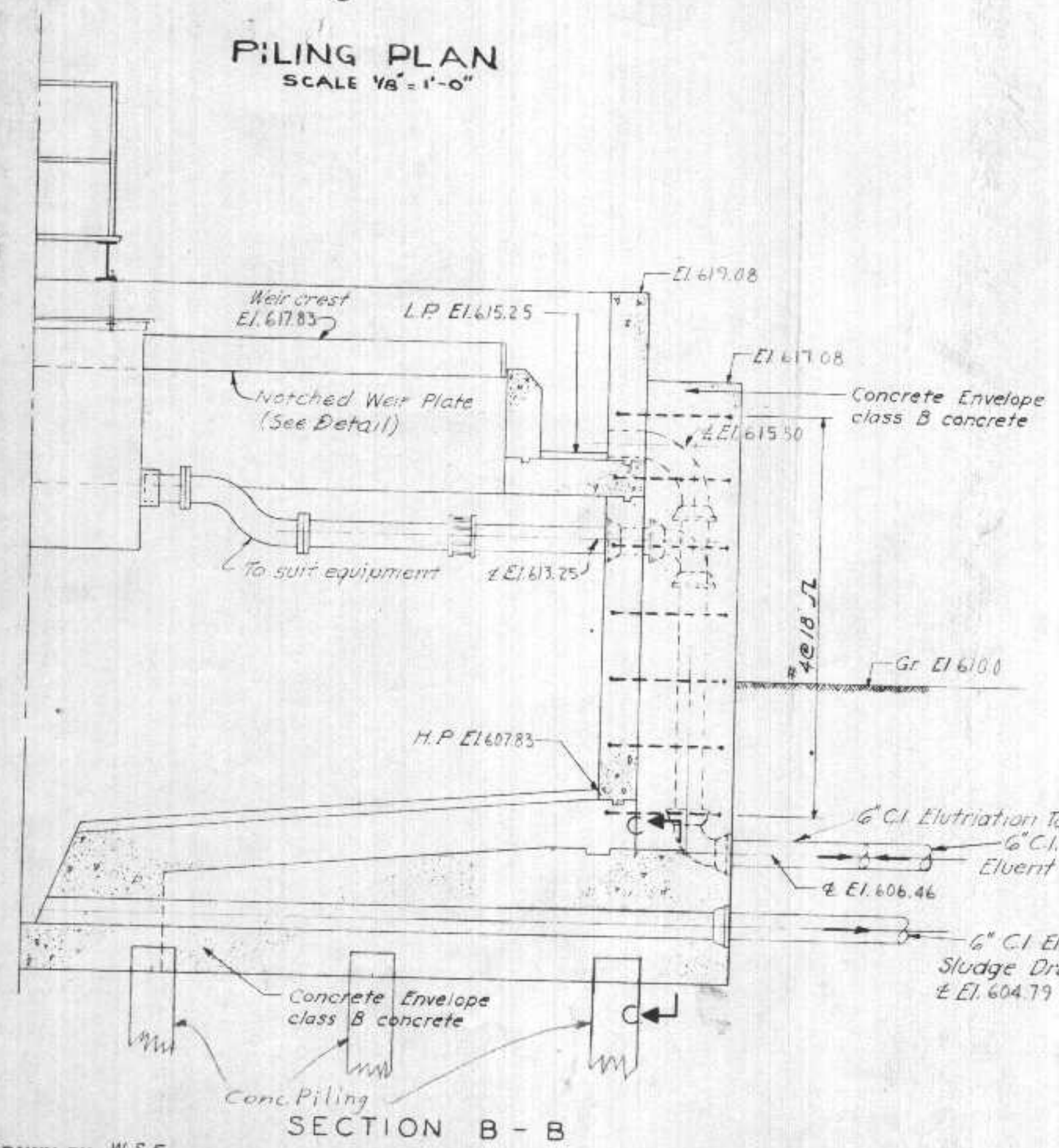
NOTCHED WEIR PLATE DETAIL SCALE 3/4" = 1'-0"



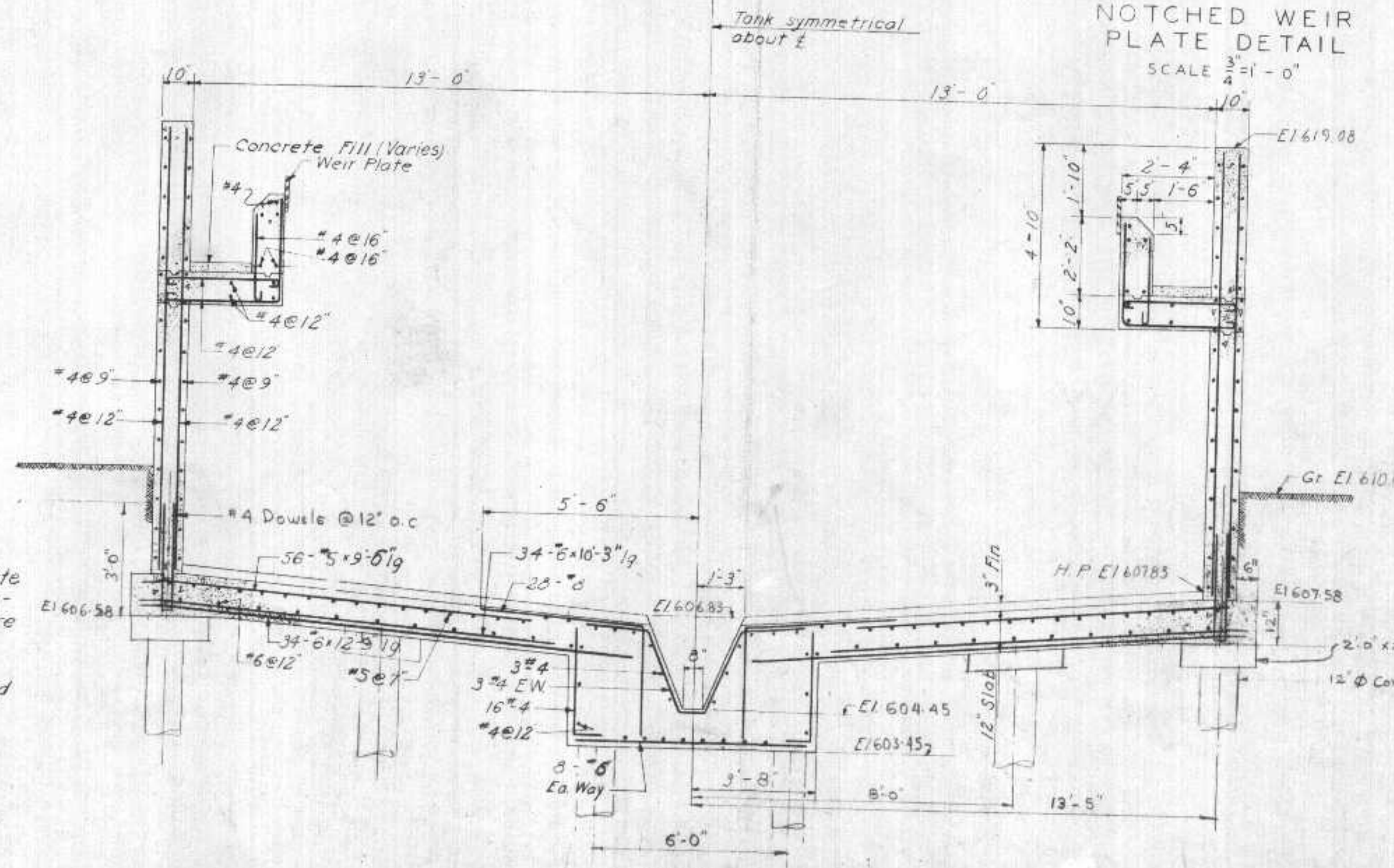
SECTION D-D SCALE: 1/4" = 1'-0"

Note: All pile are 12\"/>

PILING PLAN SCALE 1/8" = 1'-0"



SECTION B-B SCALE 3/8" = 1'-0"



SECTION A-A SCALE 3/8" = 1'-0"

DEPARTMENT OF HEALTH, EDUCATION AND WELFARE  
 DIVISION OF HEALTH SERVICES  
 These Plans and Specifications are submitted in connection with an application for a permit to construct a sewage treatment works under the provisions of the Federal Water Pollution Control Act (C.R.S. 402) and the Illinois Groundwater Protection Act (C.R.S. 147) and are hereby APPROVED.  
 (Reviewing Engineer)  
 and are hereby APPROVED  
 (Regional Engineer)  
 Region V, Chicago, Illinois

EXAMINED and reported upon by the Section on Environmental Sanitation  
 O. J. MUEGGE  
 State Sanitary Engineer  
 APPROVED by the State Board of Health, as required by Wisconsin Statutes, subject to conditions set forth in the letter of approval.  
 JUL 6 1958  
 CATEL NEIPERT, M. D.  
 State Health Officer  
 Verification: *D. Bramm*

NOTE  
 Each conc pile will be capped by 2'-0" x 2'-0" x 0'-9" mat

Date	REVISIONS	BY
6/11/58	Ladder thickness changed from 1/4" to 3/8"	J.D.
7/13/58	Pile cap mats added	J.D.
	2'-0" x 2'-0" mat under sludge line added	J.D.

REINFORCEMENT BAR DESIGNATION	REINFORCEMENT BAR DESIGNATION
2 - 1/2" φ	47 = 1/8" φ
3 - 3/4" φ	48 = 1" φ
4 - 1/2" φ	49 = 1" φ
5 - 5/8" φ	50 = 1 1/2" φ
6 - 3/4" φ	51 = 1 1/4" φ

DRAWN BY W.S.F.  
 TRACED BY W.S.F.  
 CHECKED BY H.B.A. & F.S.W.

APPROVED 1/5/58  
 DATE

SUPERIOR WIS.  
 SEWAGE TREATMENT PLANT  
 ELUTRIATION TANK  
 STRUCTURAL - PIPING AND EQUIPMENT  
 PLANS AND SECTIONS  
 SCALE, AS SHOWN  
 JAN. 1958  
 METCALF & EDDY  
 ENGINEERS  
 BOSTON, MASS.  
 HYNCOCK & ESTABROOK  
 ENGINEERS  
 MINNEAPOLIS, MINN.