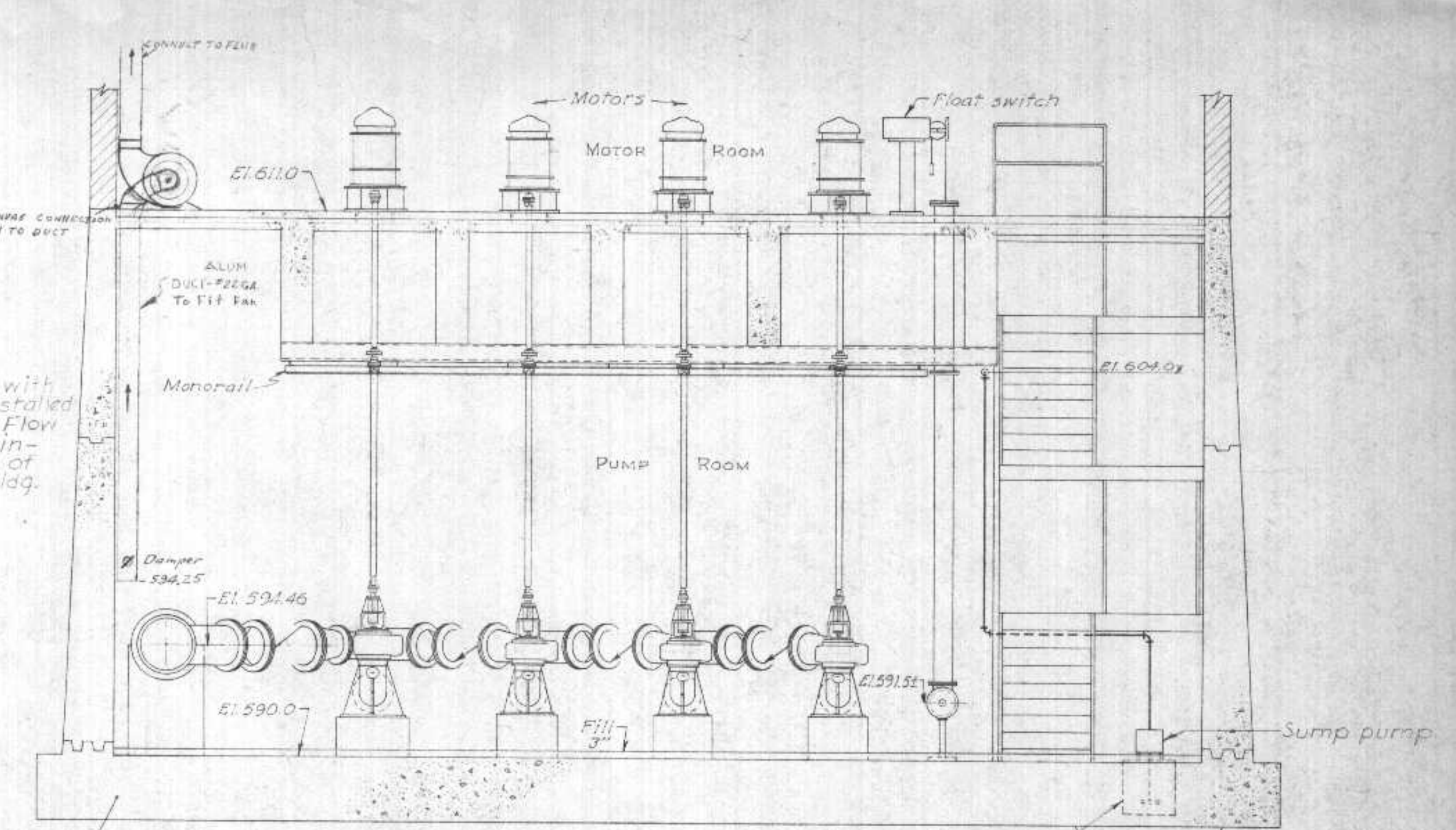
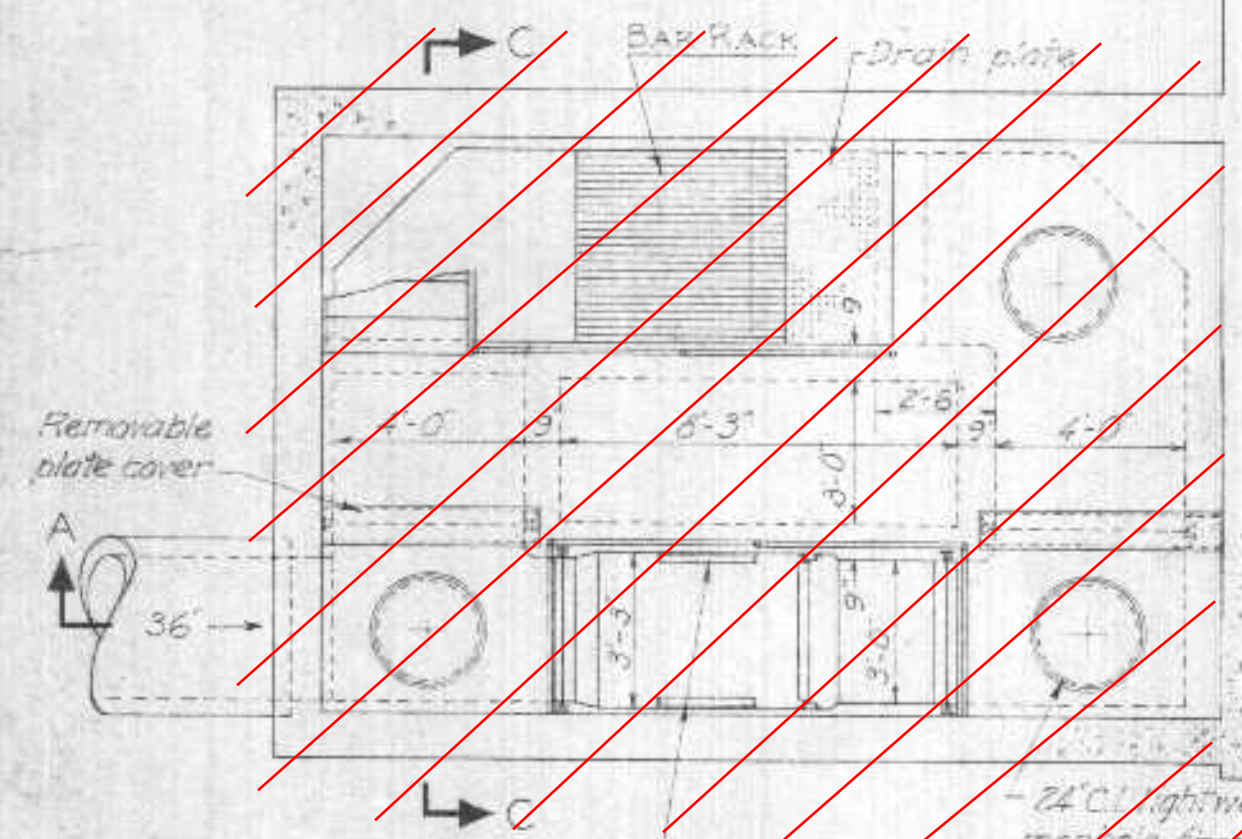


PLAN AT EL. 605±



SECTION B-B

Notes - See Sh 64 for bar rack detail



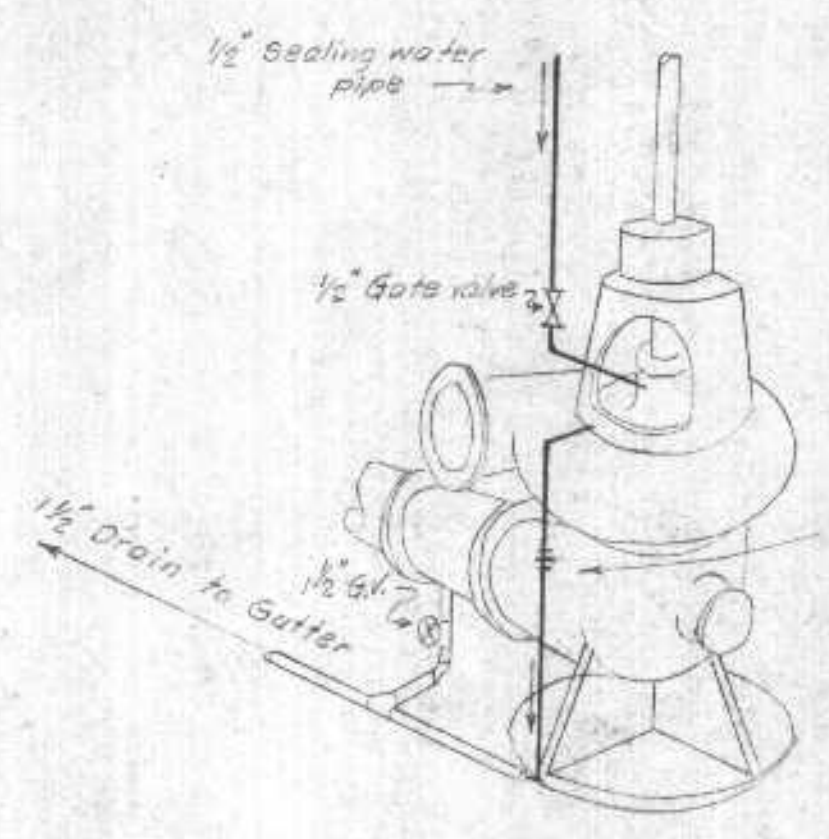
24\"/>

Recording gauge with totalizer to be installed in motor room. Flow indicator to be installed in office of Main Control Bldg.

See separate sheet for piling

Note: All stair details are similar to those shown for M. Ofc. Bldg. Details of bar rack & drainage plate are shown on misc detail - 2 con. fill on str. slab to be 3\"/>

Revised 6/20/56
HSE
7/24/56 - Fan added



TYPICAL SMALL PIPING AT PUMPS

DEPARTMENT OF HEALTH, EDUCATION, AND WELFARE
STATE HEALTH SERVICE

These Plans and Specifications are submitted in connection with an Application for a Certificate of Approval for the construction of Sewerage Treatment Plant No. 1 at the location of the Federal Water Pollution Control Act (see also 4-1-1-1-1) and the following provisions shall apply:

(Revising agency) _____ (Date) _____
and are herewith APPROVED _____ (Date) _____
(Regional Engineer) _____ (Date) _____
Region V, Chicago, Illinois

EXAMINED and reported upon by the Section on Environmental Sanitation

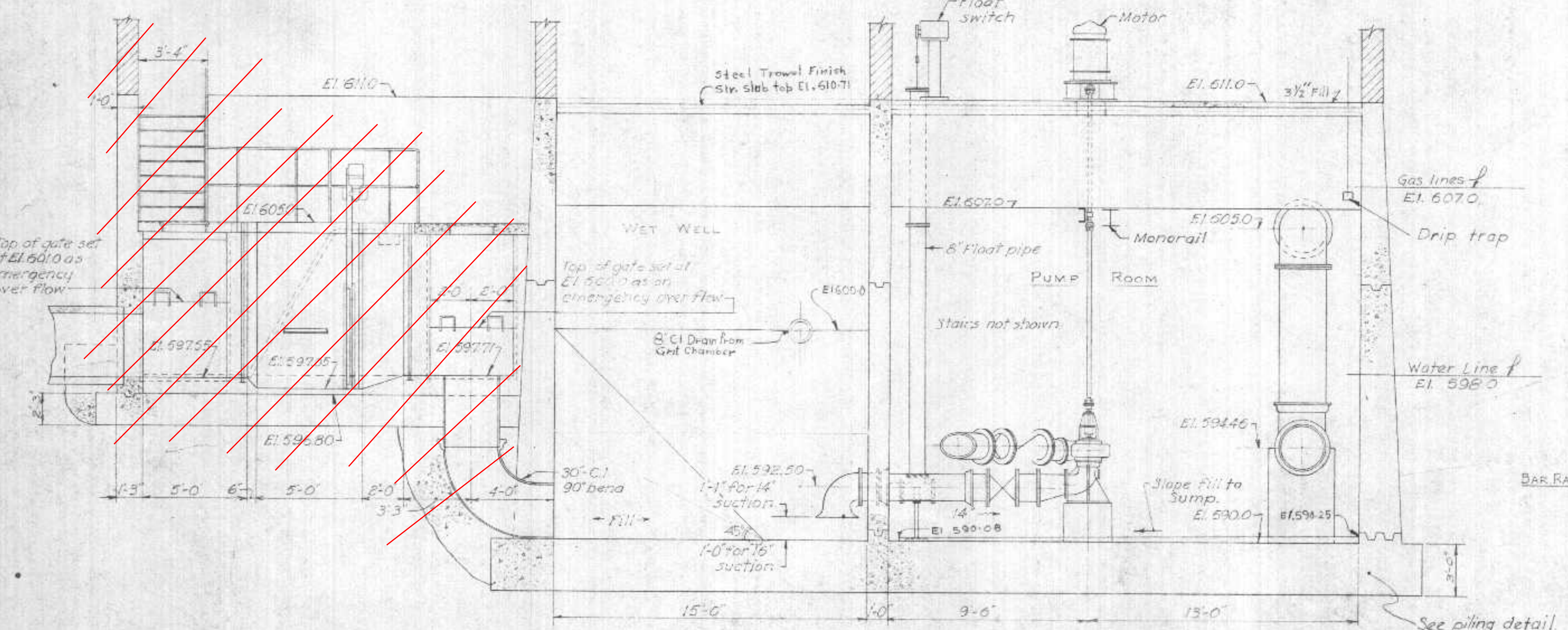
O. J. MUEGGE
State Sanitary Engineer

APPROVED by the State Board of Health, as required by Wisconsin Statutes, subject to conditions set forth in the letter of approval

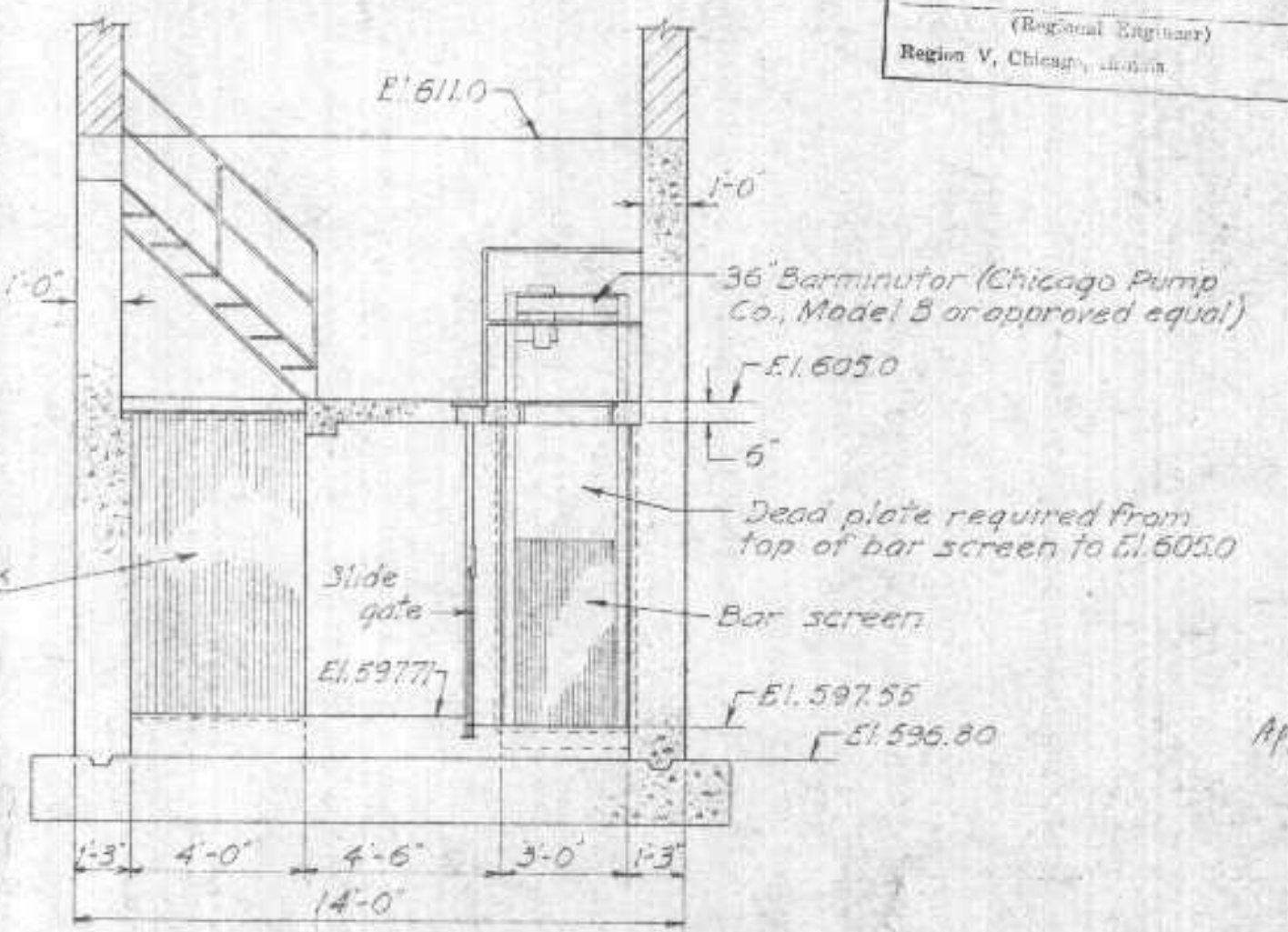
JUL 6 1956
CARL N. NEUPERT, M. D.
State Health Officer

Verification *[Signature]*

Notes: All changes in piping elevations and pump foundations required to suit the pumping units selected shall be at the expense of the contractor



SECTION A-A

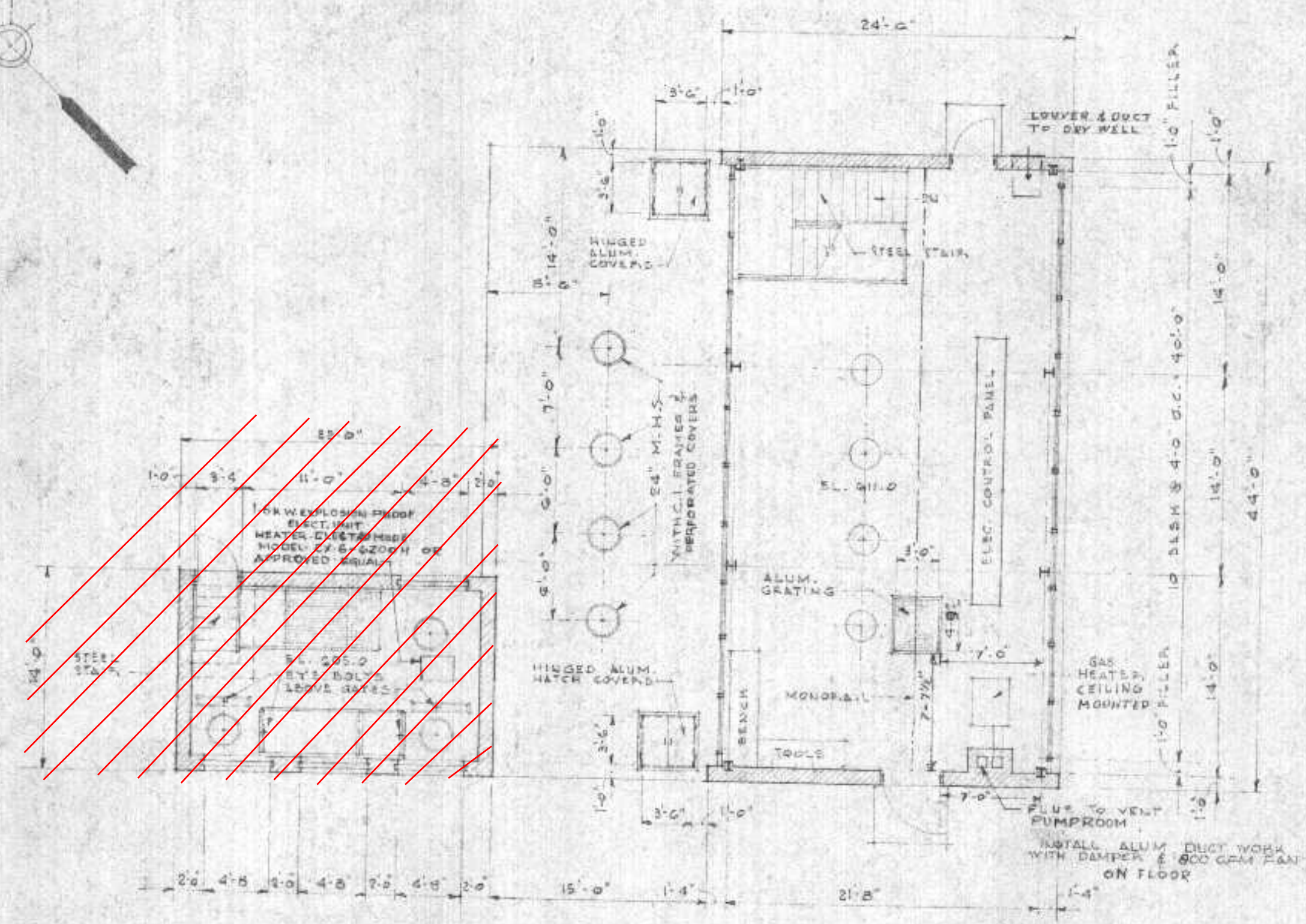
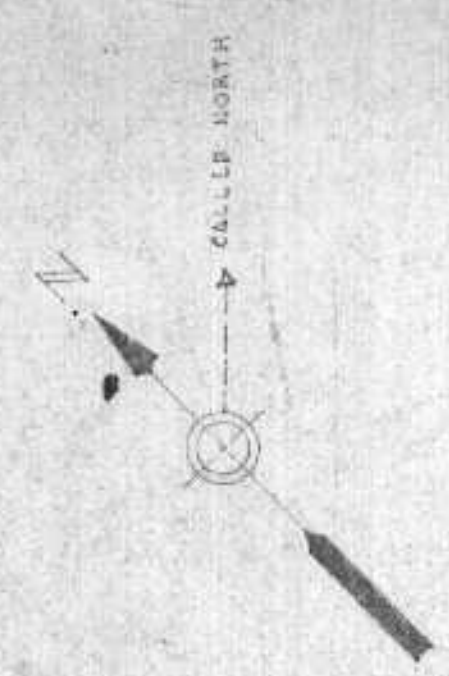


SECTION C-C

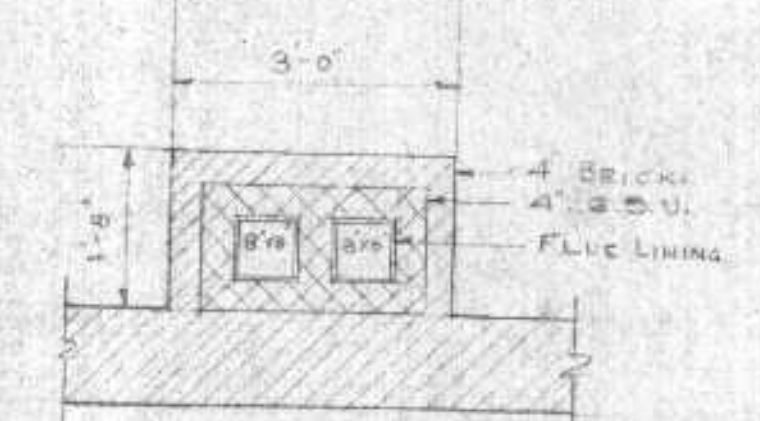
SUPERIOR, WISCONSIN
SEWAGE TREATMENT PLANT
PUMPING STATION-BARMINUTOR
EQUIPMENT & PIPING

SCALE, 1/4" = 1'-0" JANUARY 1956

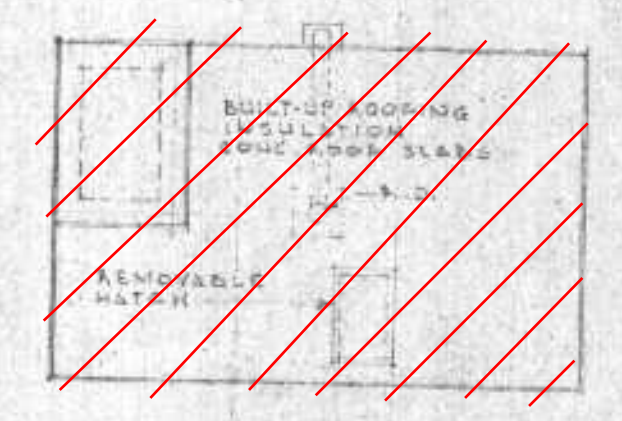
METCALF & EDDY
ENGINEERS
BOSTON, MASS.



~~BARMINTOR & RACK CHAMBER~~ - PUMPING STATION
FLOOR PLAN -
EL. 510

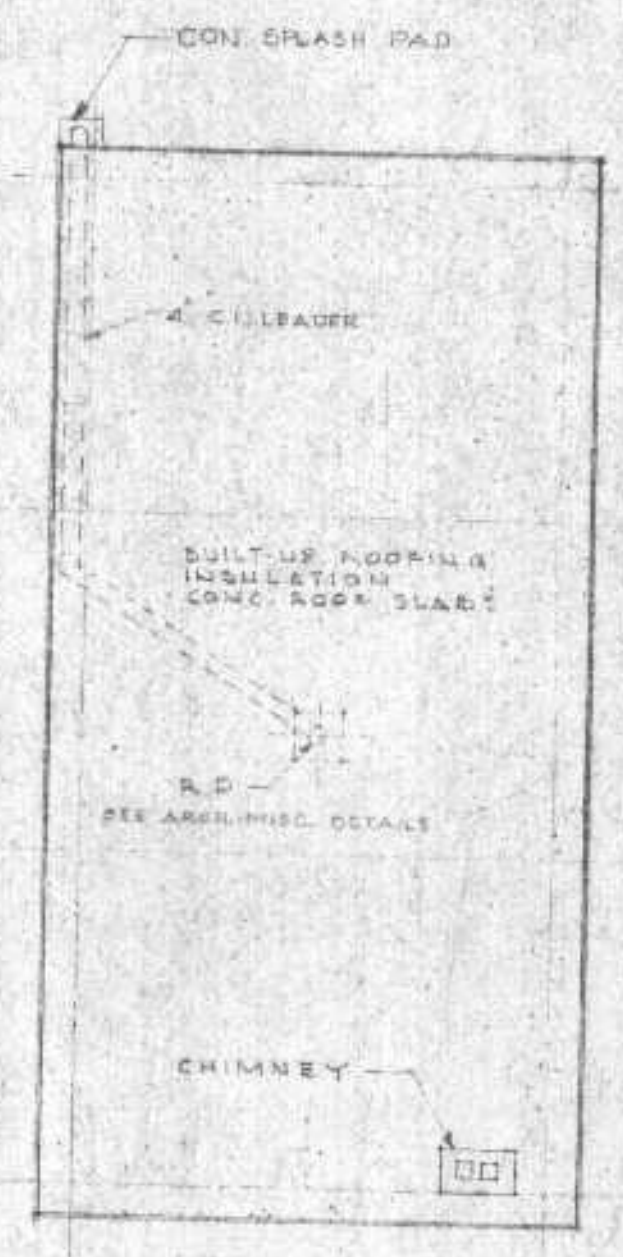


CHIMNEY DETAIL
SCALE 1/2" = 1'-0"

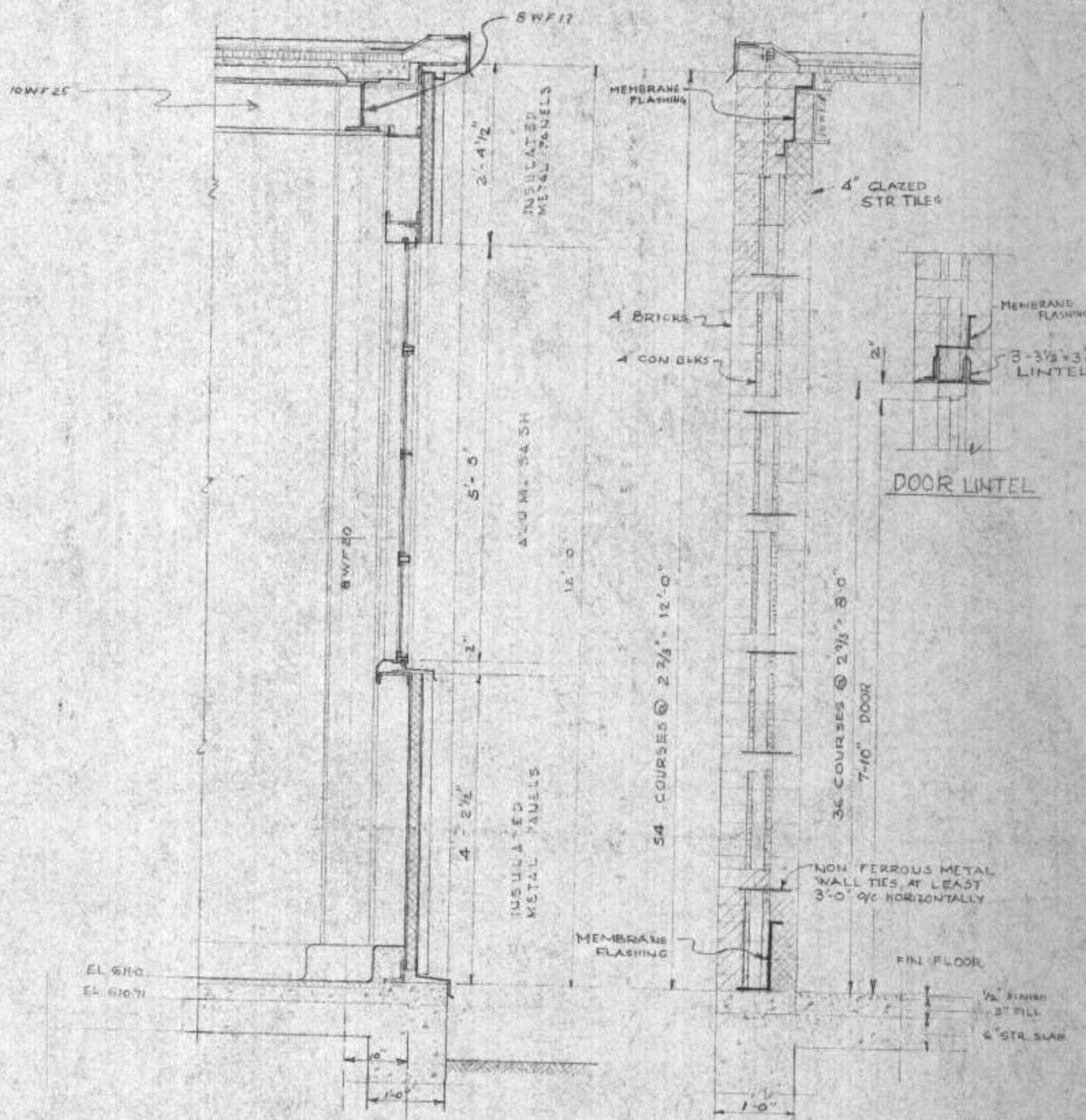


~~B&R CHAMBER~~
PUMPING STA.

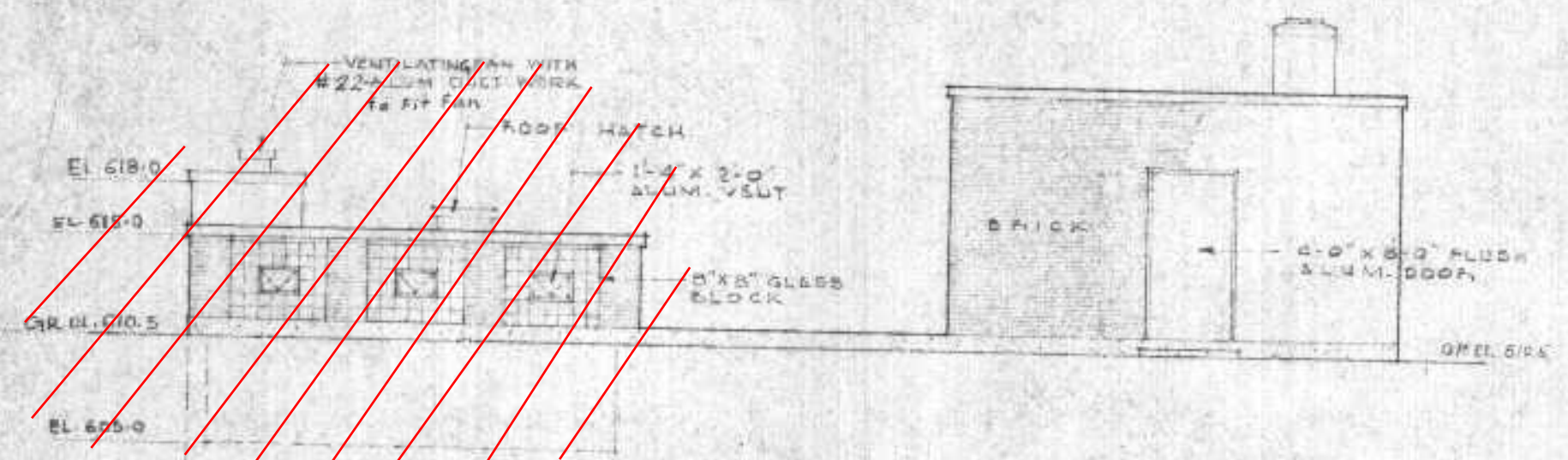
ROOF PLAN



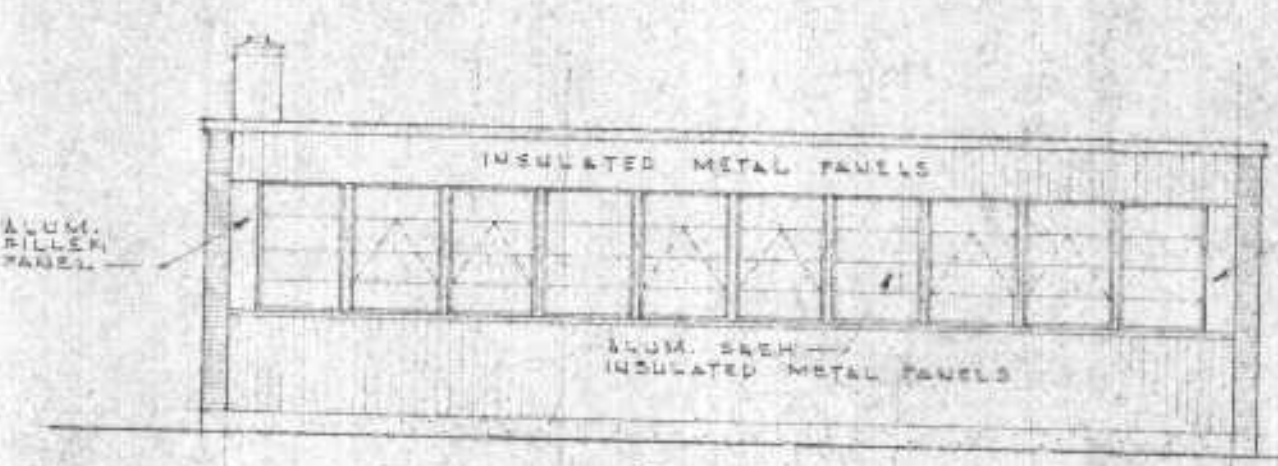
CHIMNEY



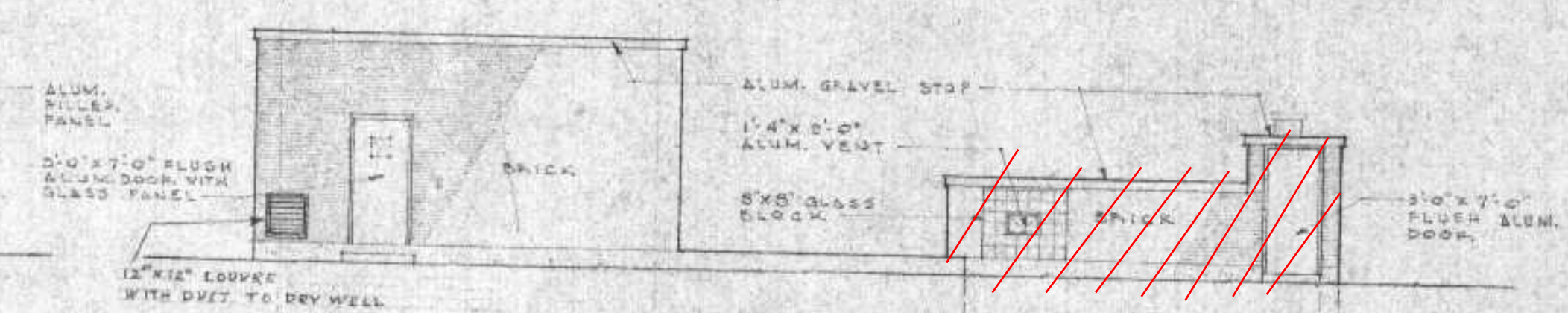
SECTIONS THRU E.E.N WALLS
W.E.S WALL SIMILAR
SCALE 1/2" = 1'-0"



SOUTH ELEVATION



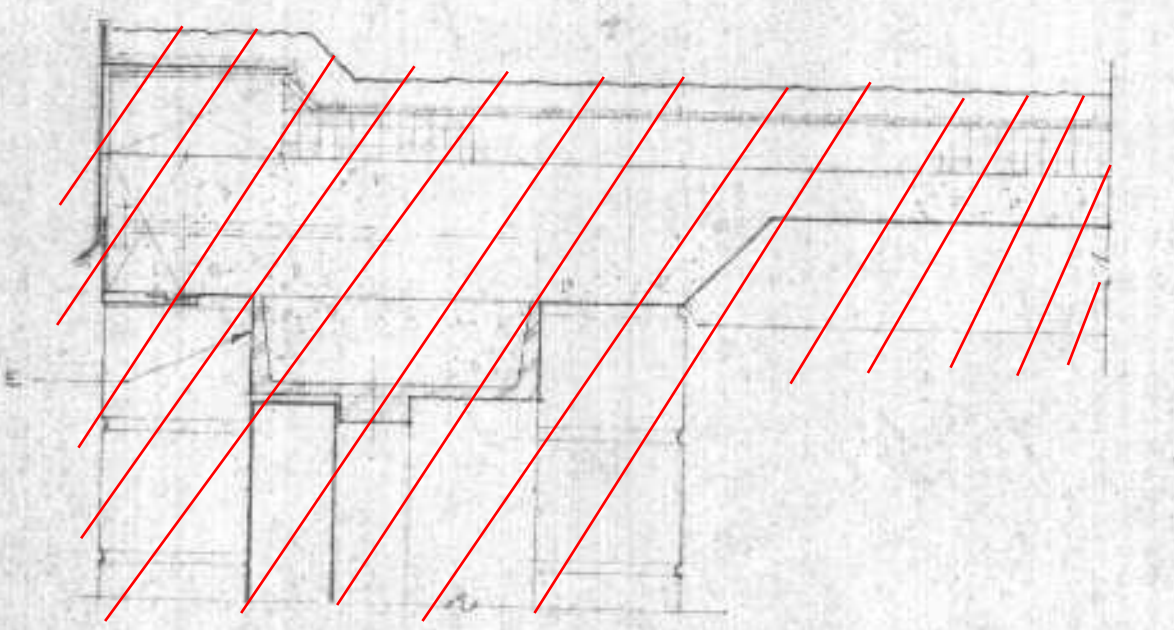
EAST ELEVATION



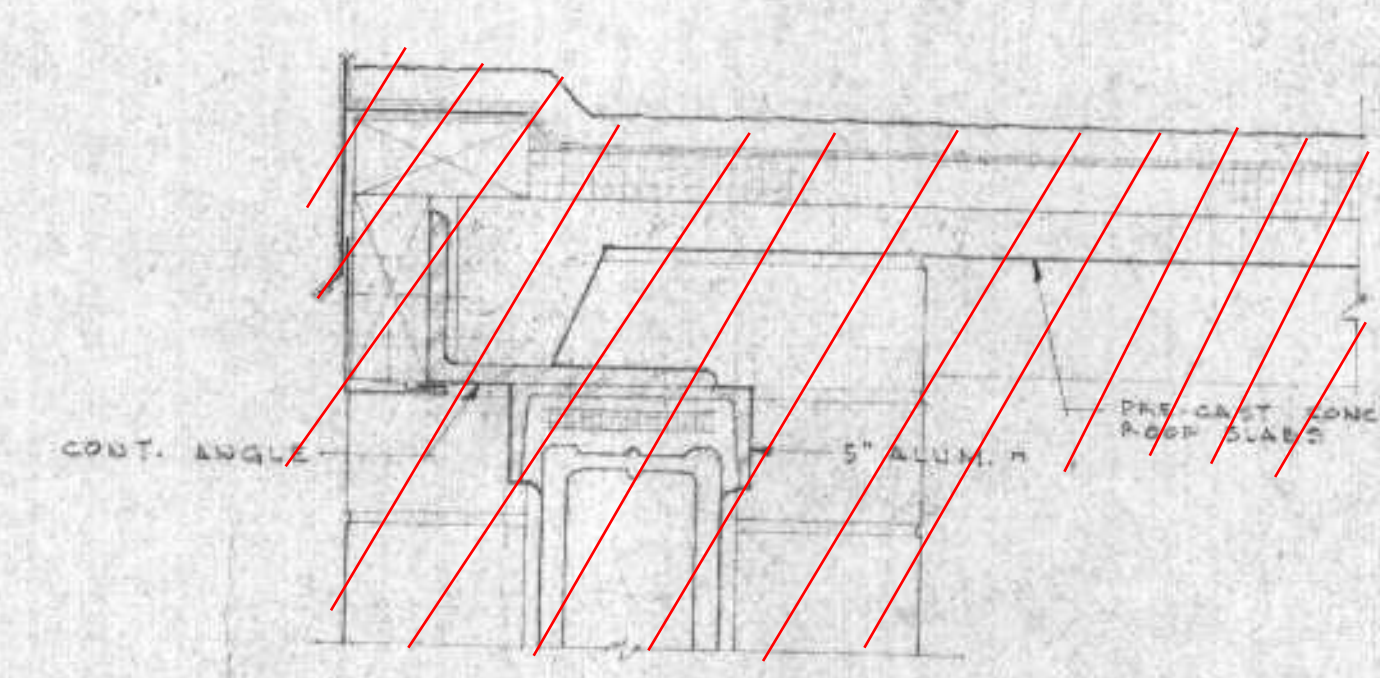
NORTH ELEVATION

EXAMINED and reported upon by the Section on Environmental Sanitation
O. J. MUEGGE
State Sanitary Engineer
APPROVED by the State Board of Health, as required by Wisconsin Statutes, subject to conditions set forth in the letter of approval.
JUL 6 1956
CARL N. NEUPERT, M. D.
State Health Officer
Verification *[Signature]*

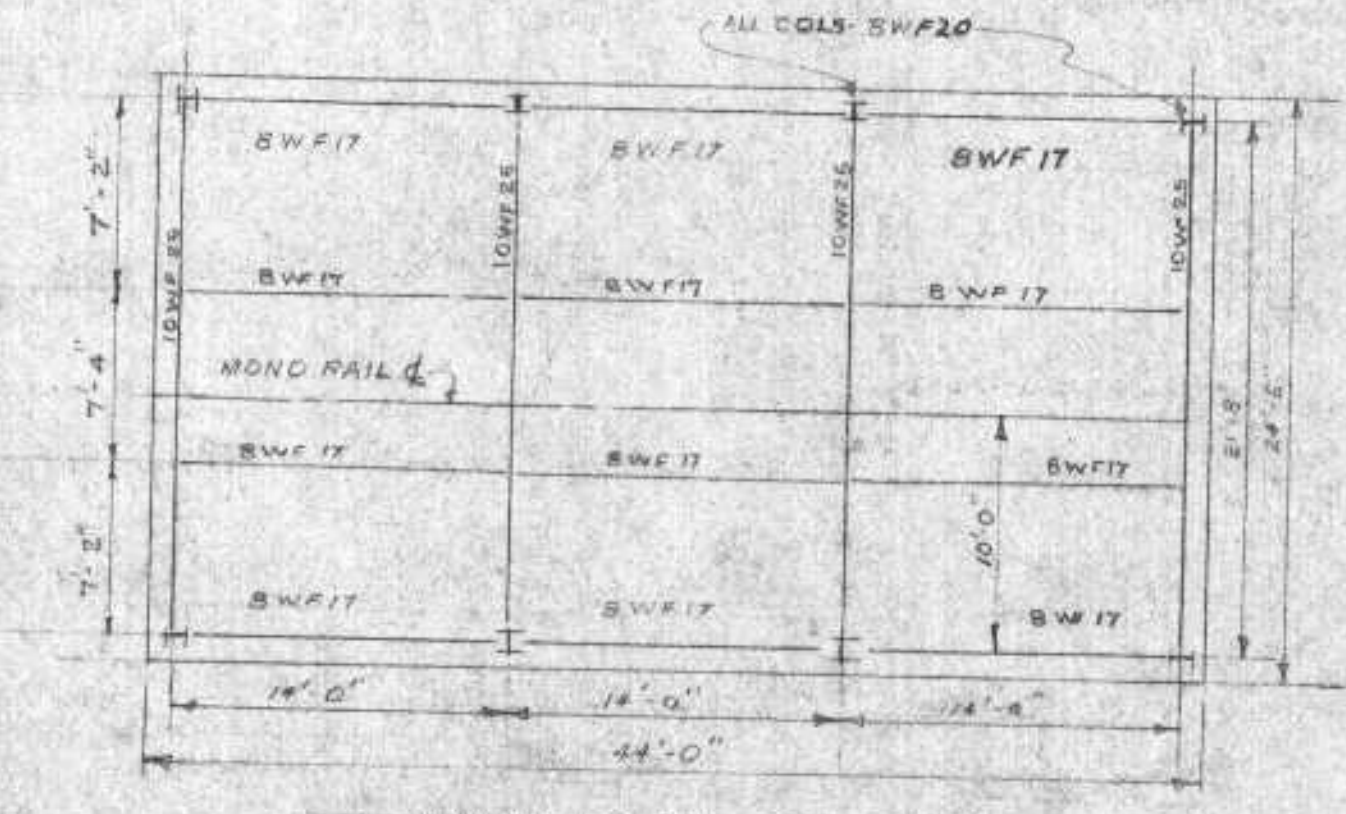
REVISIONS
6/18/56 Two Beams 10W25 added on North & South walls & Membrane extended to North wall
6/19/56 Section added with door lintel details
7/24/56 Change made in barminstor room & added washings to north wall



DETAIL OF EAVE AT DOOR
~~BARMINTOR & RACK CHAMBER DETAILS~~
SCALE 1/2" = 1'-0"



~~DETAIL OF EAVE AT GLASS BLOCK~~

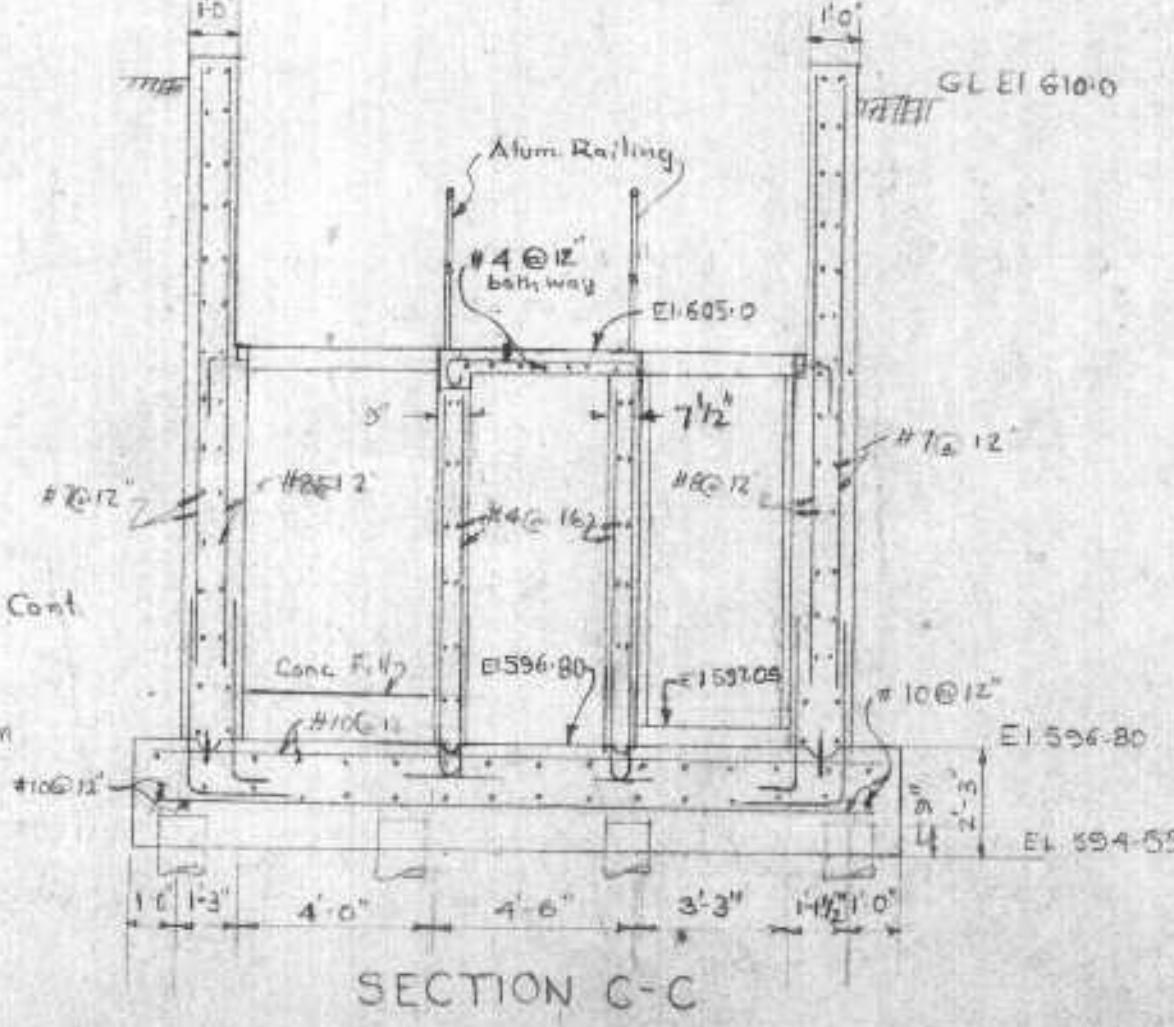
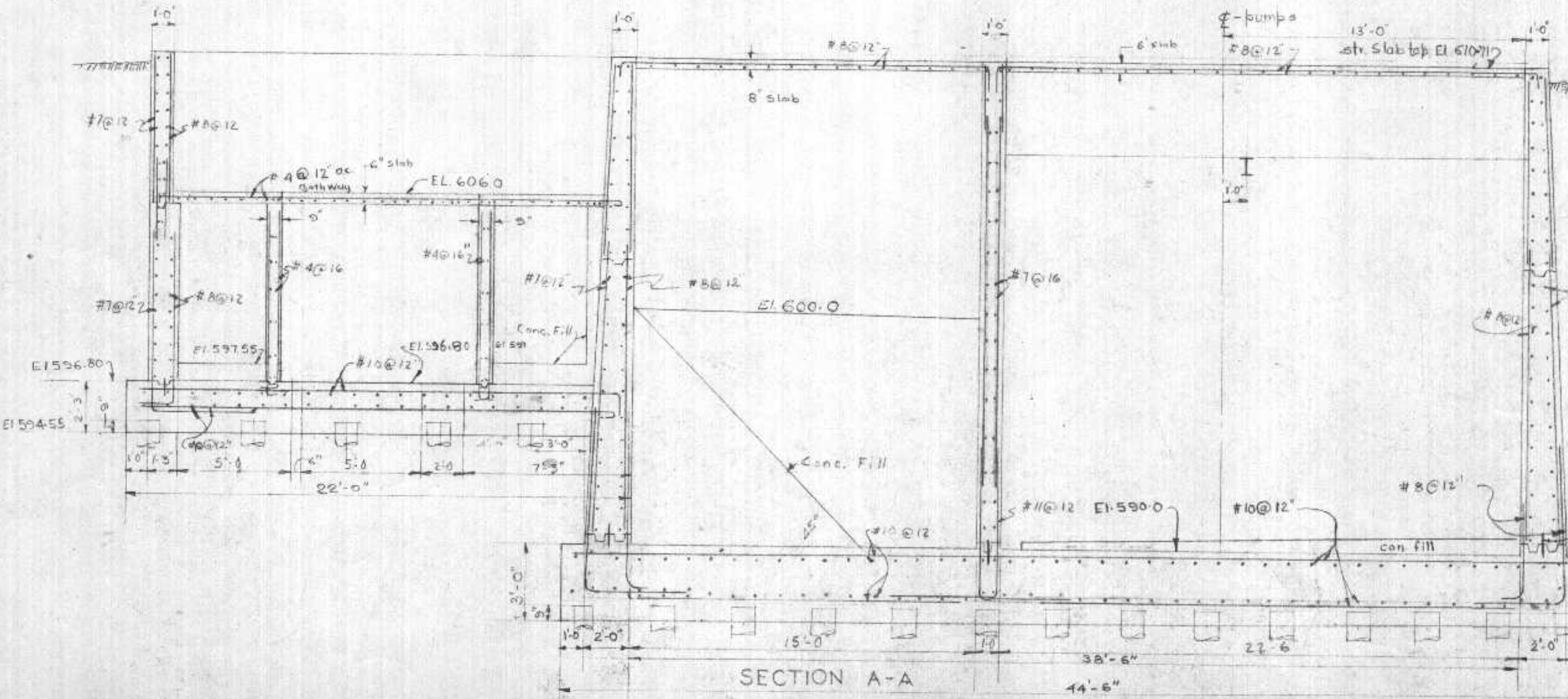
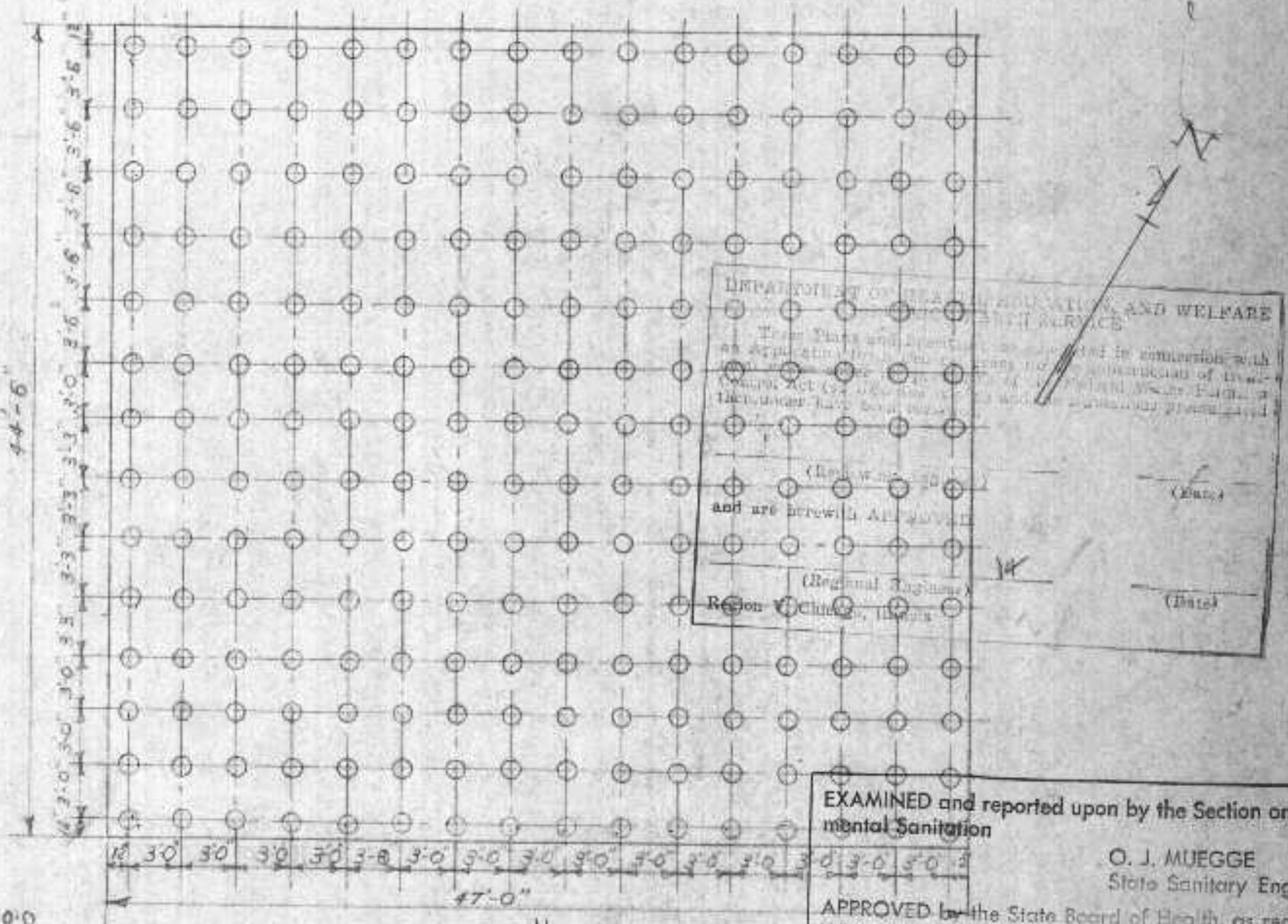
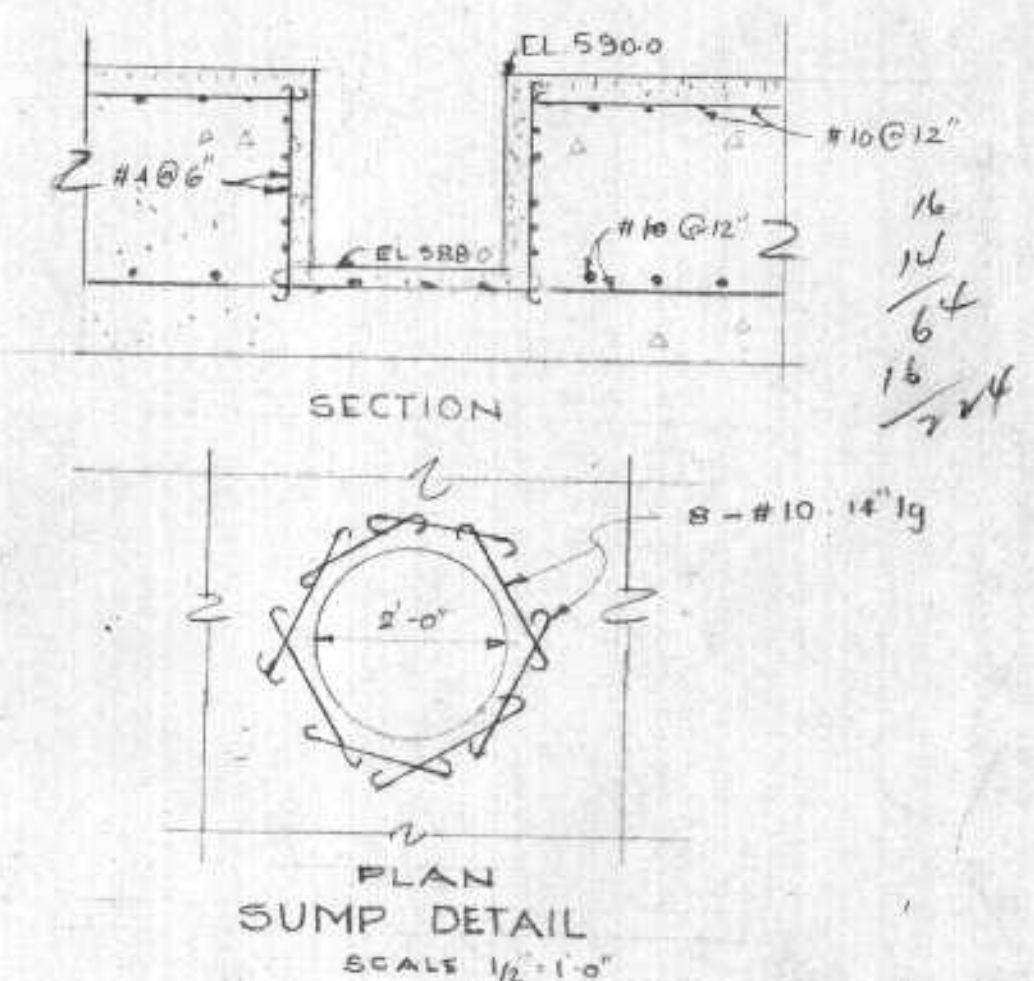
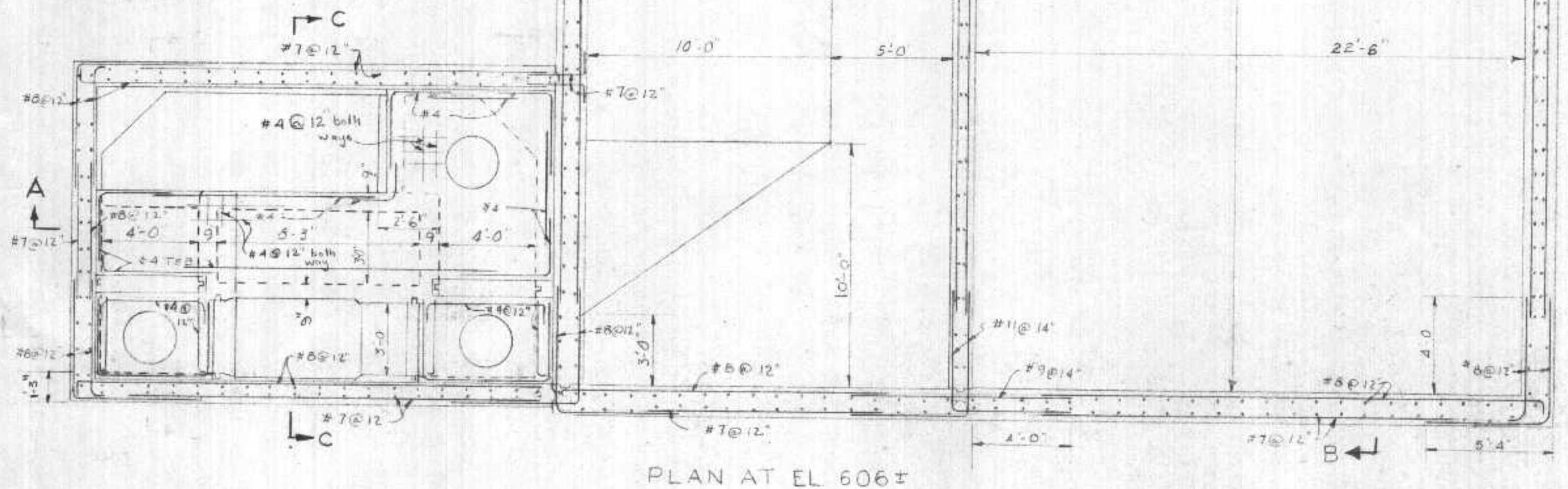
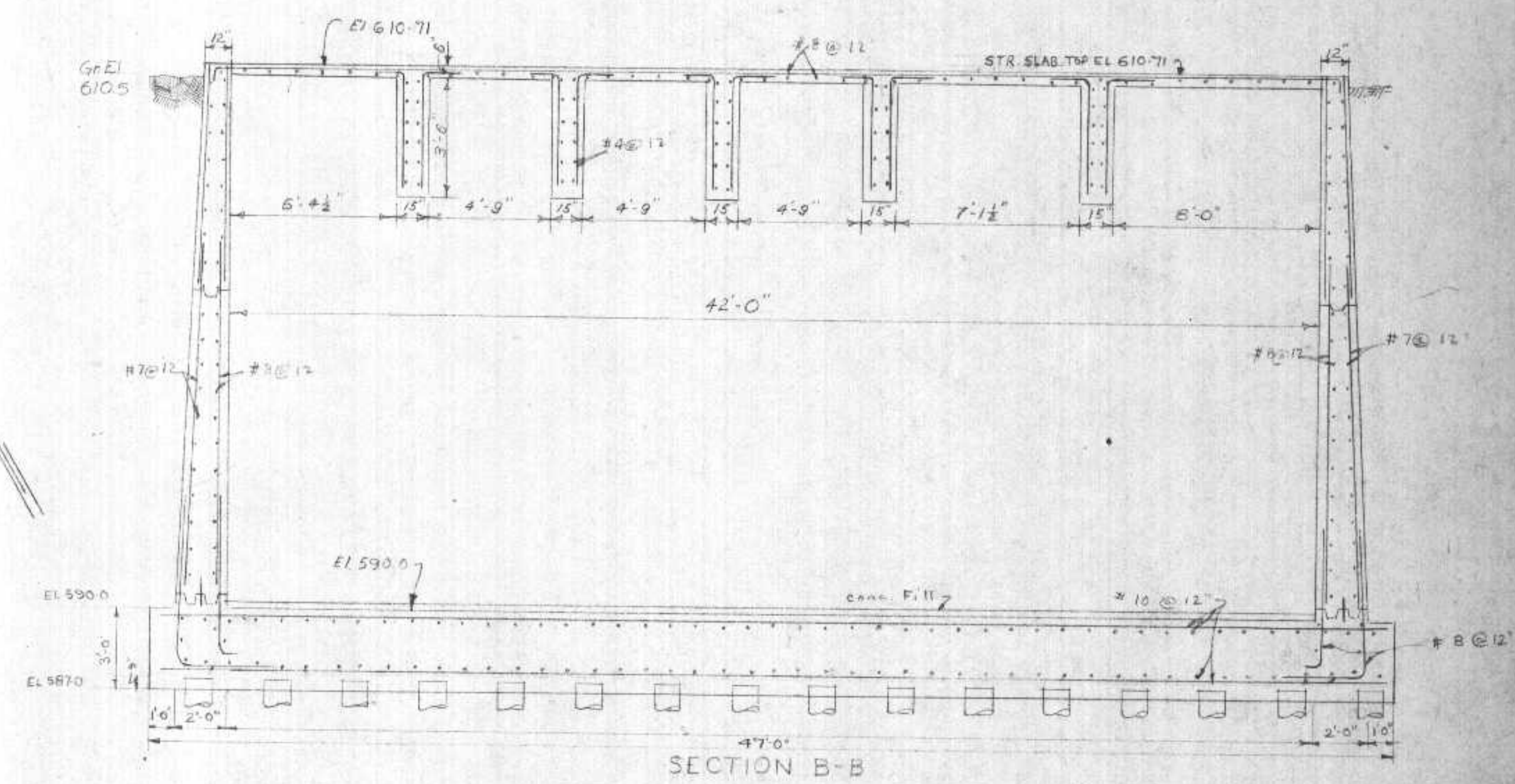
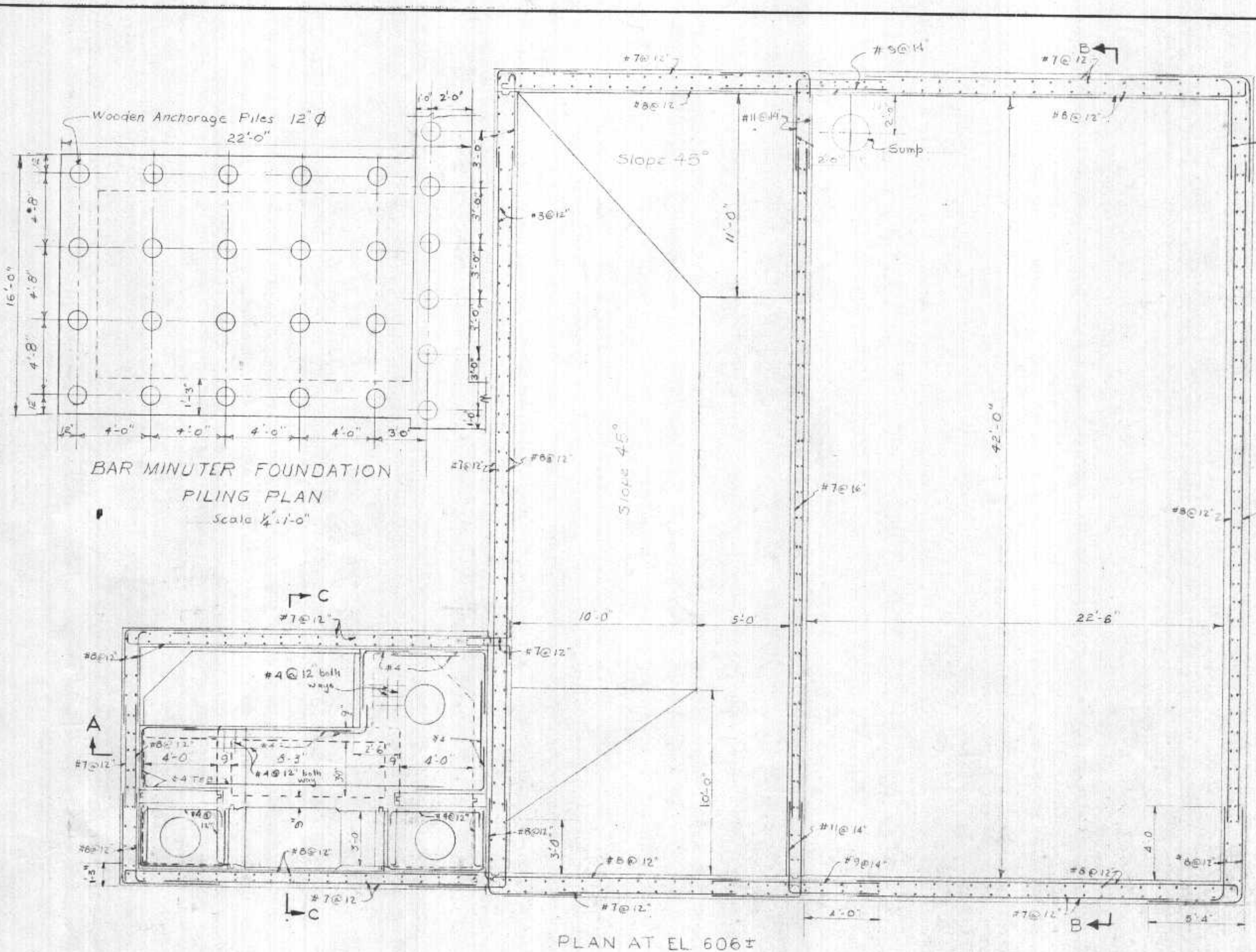


PUMP HOUSE STR. STEEL
SCALE 1/2" = 1'-0"

DEPARTMENT OF HEALTH
These Plans are submitted, as amended, for approval of the State Board of Health, as required by Wisconsin Statutes, subject to conditions set forth in the letter of approval.
7/24/56 Change made in barminstor room & added washings to north wall
(Retaining Engineer) _____ (Date) _____
and are herewith APPROVED
(Regional Engineer) _____ (Date) _____
Region V, Chicago, Illinois

SUPERIOR, WISCONSIN
SEWAGE TREATMENT PLANT
PUMPING STATION - BARMINTOR
ARCHITECTURAL

SCALE 1/8" = 1'-0"
EXCEPT AS NOTED
METCALF & EDDY
ENGINEERS - BOSTON, MASS.
JAN. 1956

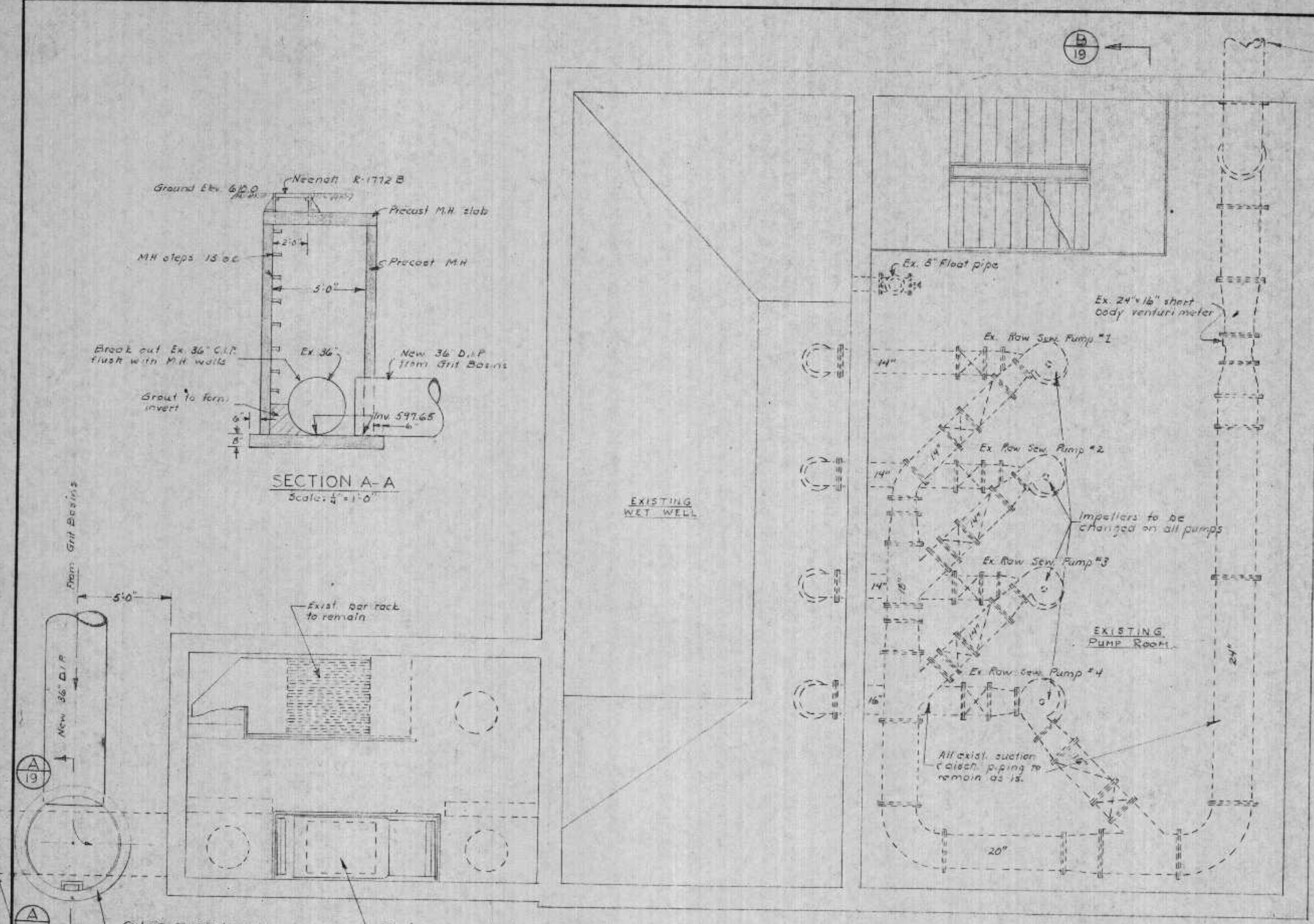


DEPARTMENT OF HEALTH AND WELFARE
 DIVISION OF ENVIRONMENTAL SANITATION
 EXAMINED and reported upon by the Section on Environmental Sanitation
 O. J. MUEGGE
 State Sanitary Engineer
 APPROVED by the State Board of Health, as required by Wisconsin Statutes, subject to conditions set forth in the letter of approval
 JUL 6 1958
 Verification *B. J. ...*
 CARL N. NEBERT, M.D.
 State Health Officer

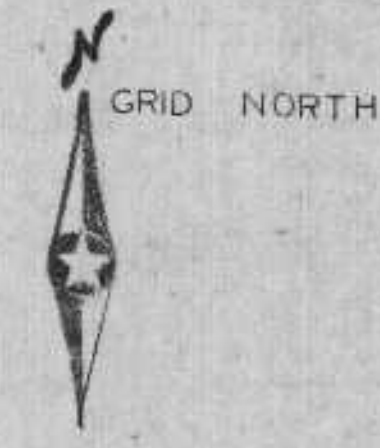
Note:
 All Piles are Wooden Anchorage Piles

REVISIONS			DATE	DESCRIPTION	BY
1	10/15/58	Office plates added at 2 1/2" x 1 1/2"			
2	11/10/58	Sump detail added			J.D.
3	12/15/58	Secs. AA, CC & Plan corrected & steel added			J.D.

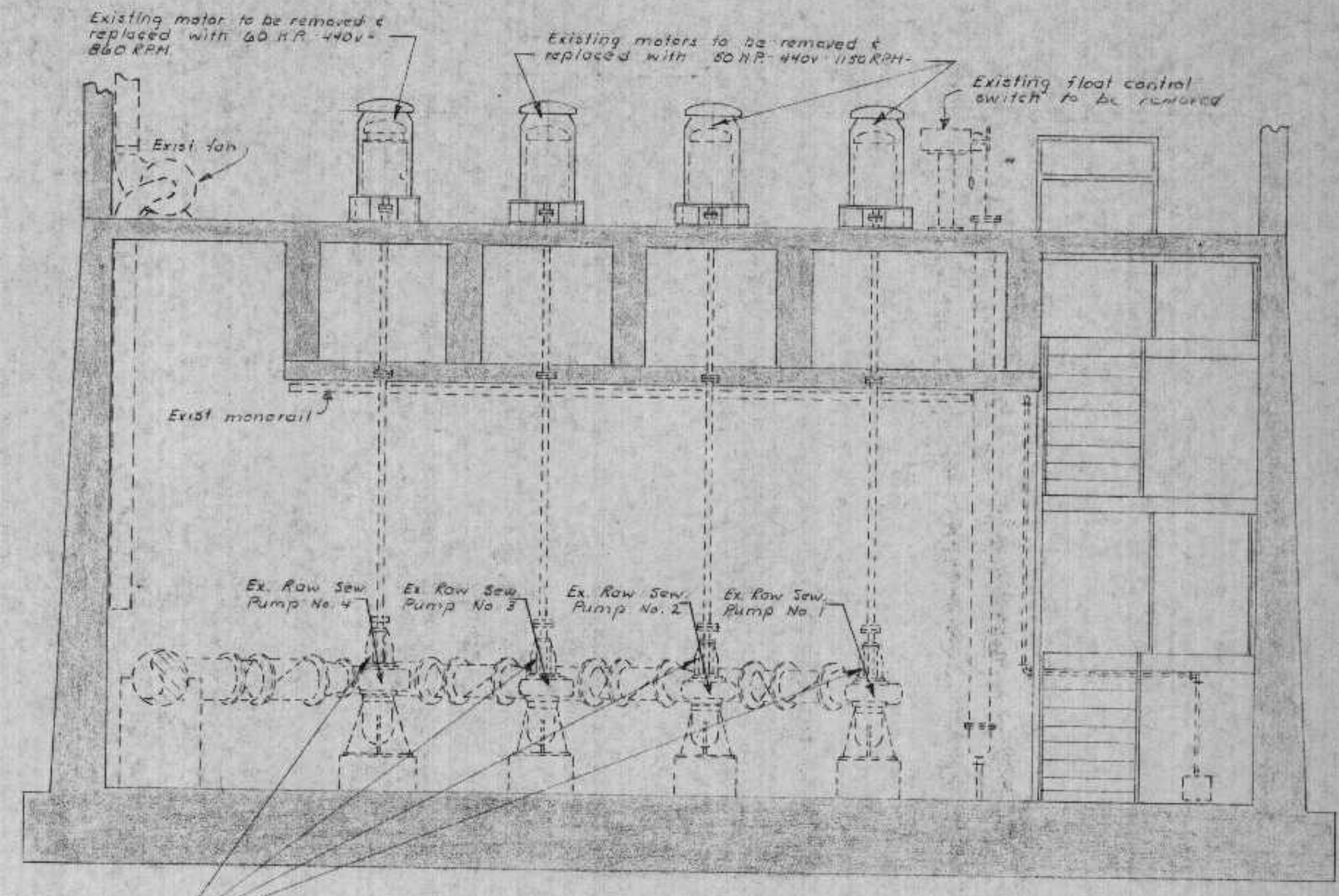
PUMPING STATION-BARMINUTOR SEWAGE TREATMENT PLANT	
SUPERIOR, WISCONSIN	
HITCHCOCK & ESTABROOK, INC.	
CONSULTING ENGINEERS	
500 LINCOLN BLDG.	
MINNEAPOLIS 1, MINN.	
DR. J.L.	TR. J.D.
CHKD. J.L.	APPD. J.D.
DATE:	SCALE: 1/2"=1'-0"
JOB NO. 400	SHEET NO. 24 of 71



EXISTING BARMINUTOR BLDG. & MAIN PUMPING STATION PLAN
Scale: 1/4" = 1'-0"

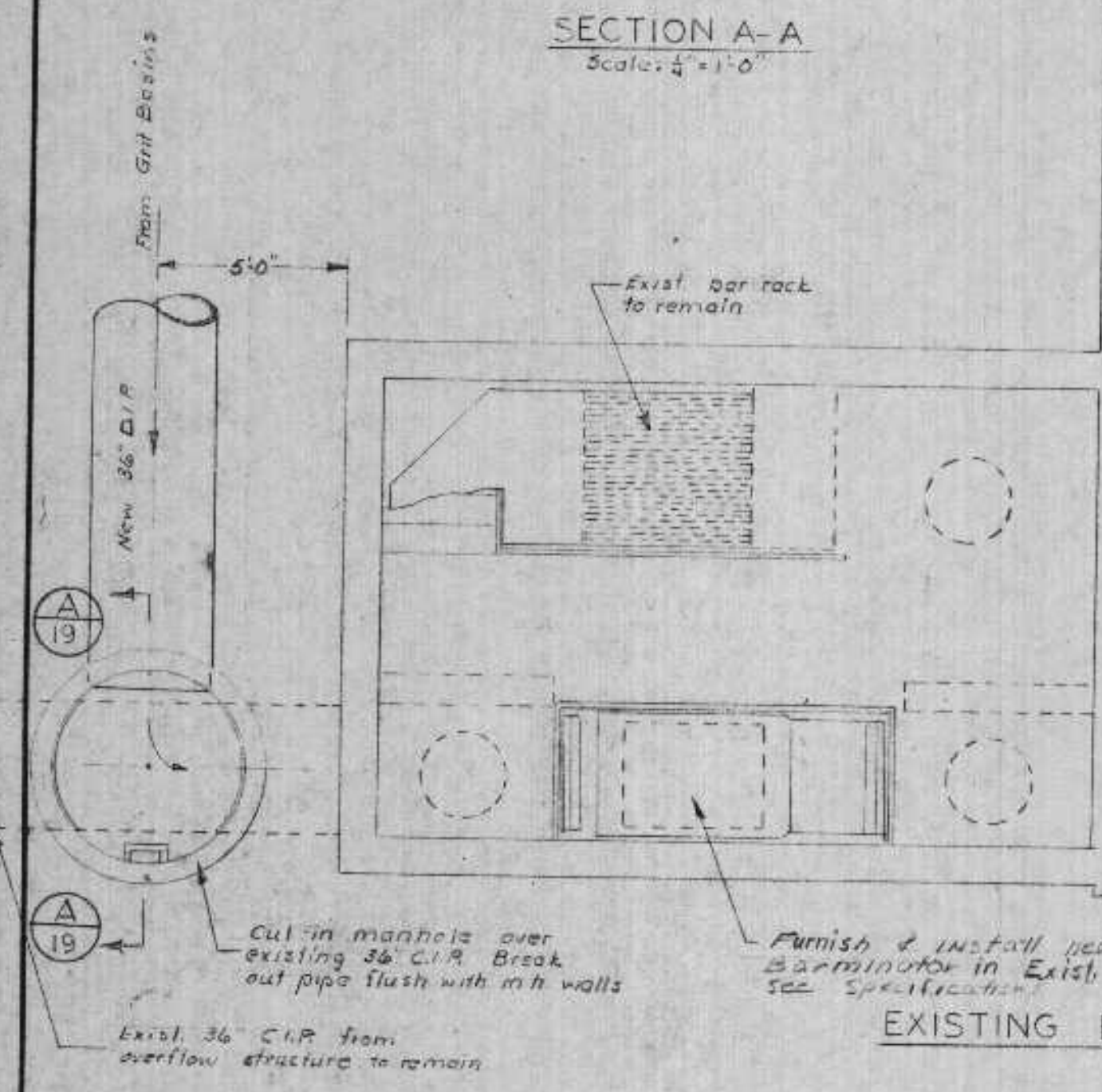


See discharge pipe detail below for details existing 24" C.I.P.

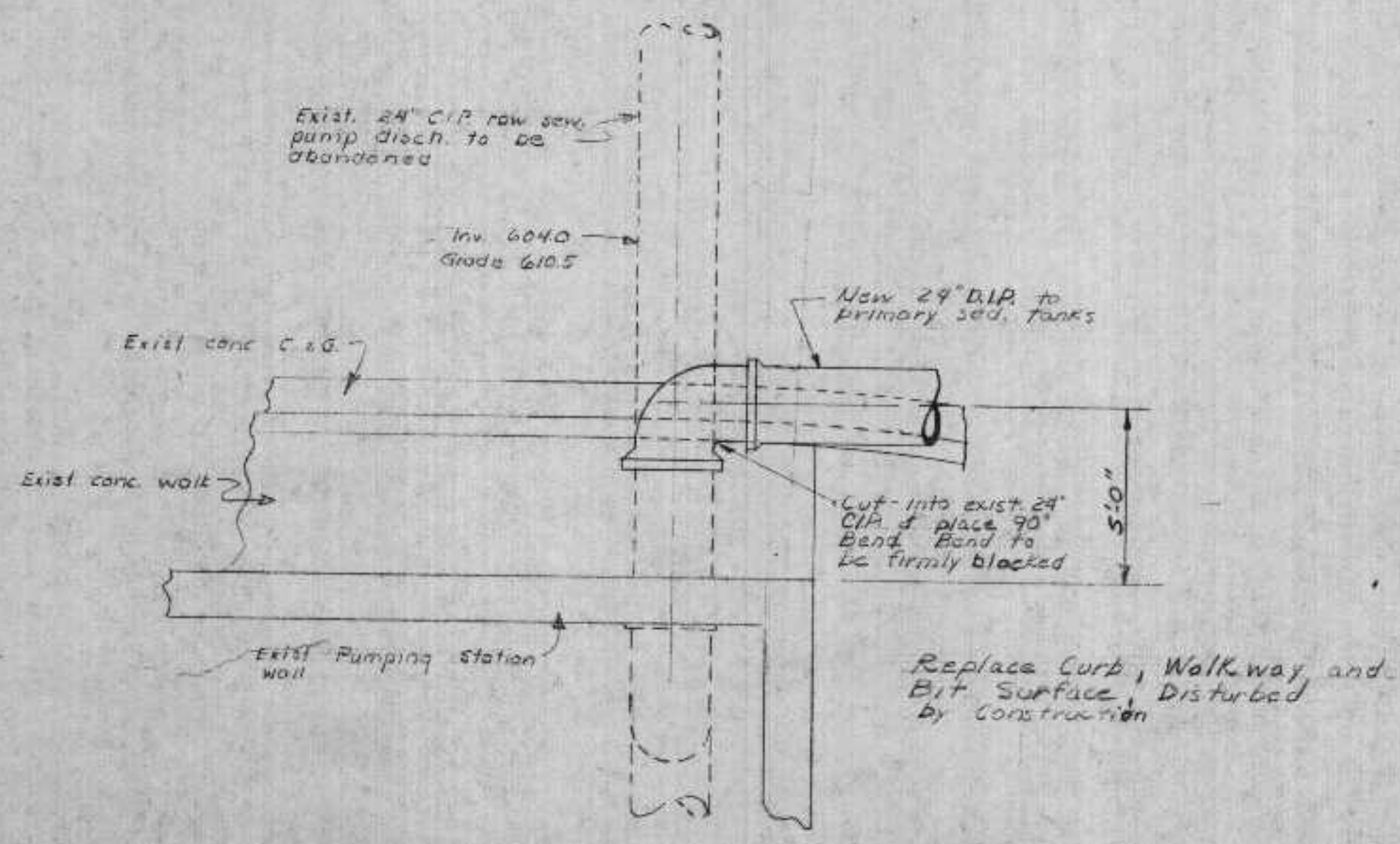


SECTION B-B
Scale: 1/2" = 1'-0"

- Notes:
1. Pumps No. 1, 2 & 3 - Existing impellers to be replaced with new impellers capable of 3,500 gpm @ 40 TDH each @ 1100 RPM & 1,100 gpm @ 27 TDH each @ 860 RPM
 2. Pump No. 4 - Existing impeller to be replaced with new impeller capable of 3,500 gpm @ 46 TDH @ 860 RPM & 1,000 gpm @ 27 TDH @ 665 RPM
 3. Existing equipment & piping shown as dashed lines.
 4. Contractor shall provide all new equipment & modifications required by the motor & impeller size changes.



SECTION A-A
Scale: 1/4" = 1'-0"

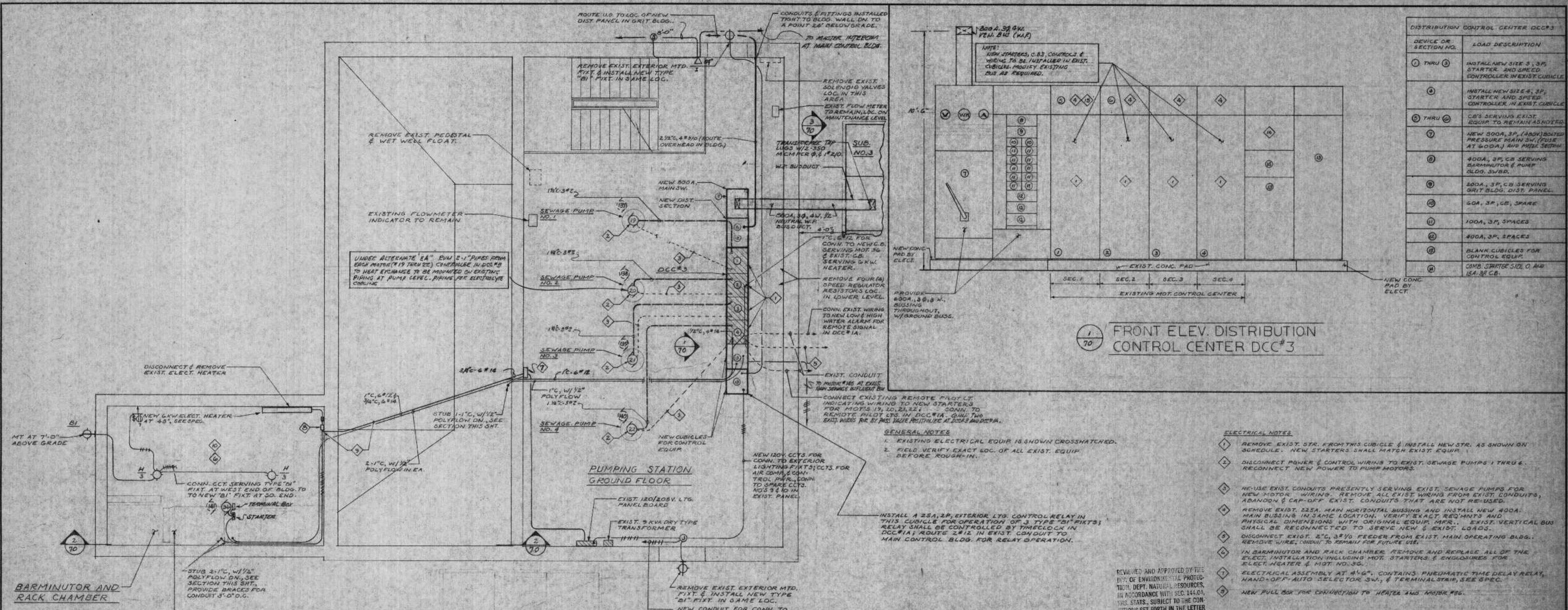


DISCHARGE PIPE DETAIL
Scale: 1/4" = 1'-0"

REVIEWED AND APPROVED BY THE
DIV. OF ENVIRONMENTAL PROTECTION,
DEPT. NATURAL RESOURCES,
IN ACCORDANCE WITH SEC. 141.04,
WIS. STATS., SUBJECT TO THE CONDITIONS
SET FORTH IN THE LETTER OF APPROVAL.
THOMAS G. FRANGOS
ADMINISTRATOR

APPROVAL NO.
72 355
DATE: FEB 4 '74

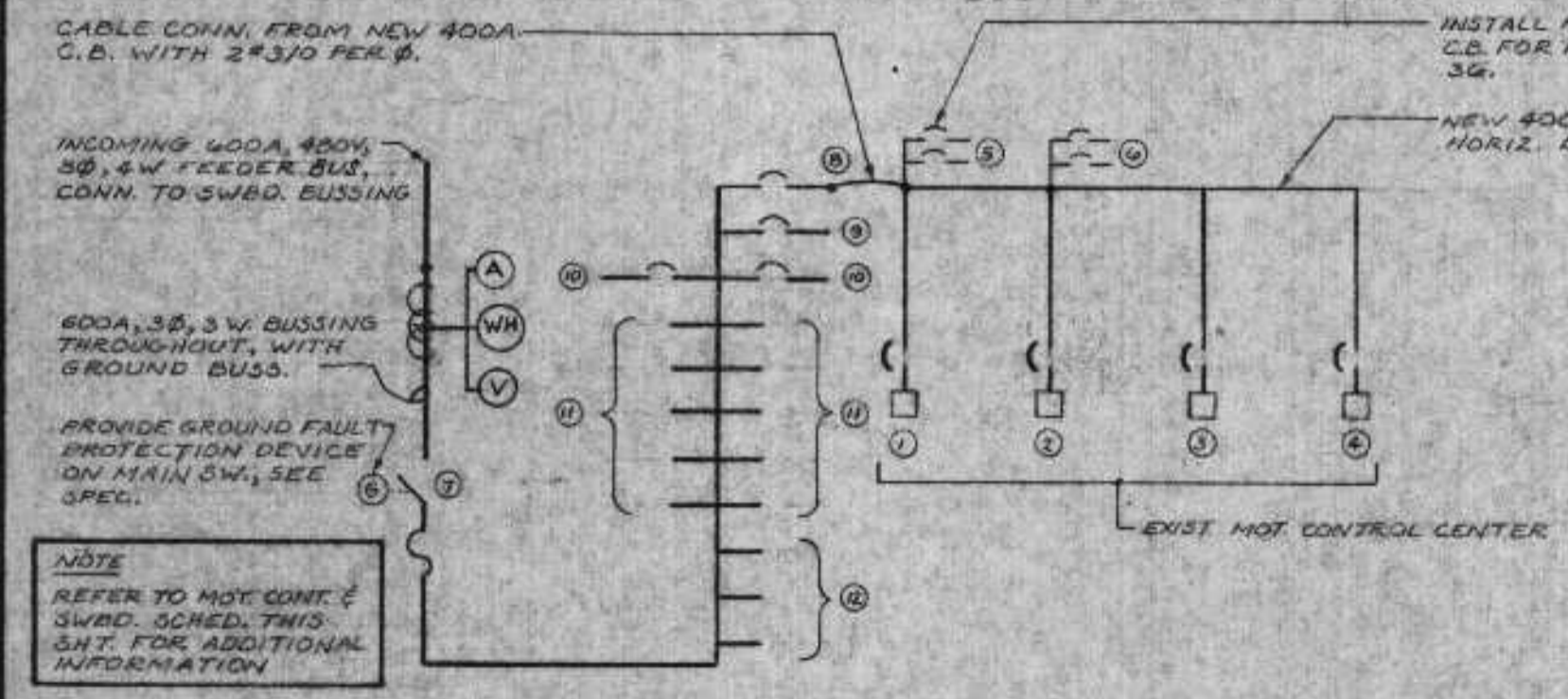
DNR JAN 3 1974



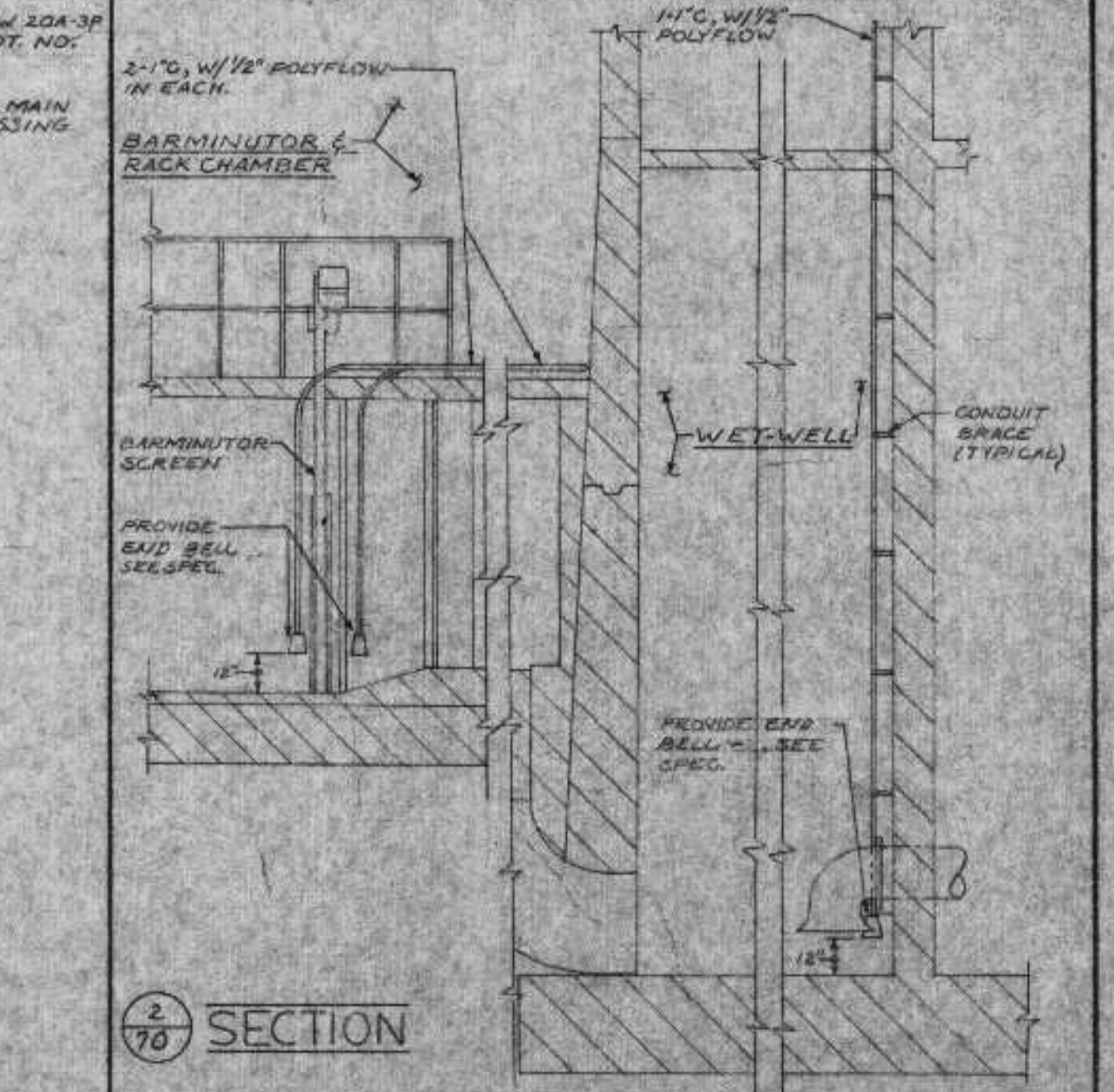
DEVICE OR SECTION NO.	LOAD DESCRIPTION
1 THRU 3	INSTALL NEW SIZE 3, 3P, STARTER AND SPEED CONTROLLER IN EXIST. CUBICLE
4	INSTALL NEW SIZE 4, 3P, STARTER AND SPEED CONTROLLER IN EXIST. CUBICLE
5 THRU 6	CB'S SERVING EXIST. EQUIP. TO REMAIN AS NOTED
7	NEW 300A, 3P, (ADJUSTABLE) PRESSURE MAIN SW. (FUSE AT 600A.) AND MTR. SECTRA
8	400A, 3P, CB SERVING BARMINATOR & PUMP BLDG. SWBD.
9	200A, 3P, CB SERVING GRIT BLDG. DIST. PANEL
10	50A, 3P, 1CB, 3SPACE
11	100A, 3P, SPACES
12	400A, 3P, SPACES
13	BLANK CUBICLES FOR CONTROL EQUIP.
14	COMB. SWITCHES SIZE 0 AND 15A, 3P CB.

1/70 FRONT ELEV. DISTRIBUTION CONTROL CENTER DCC#3

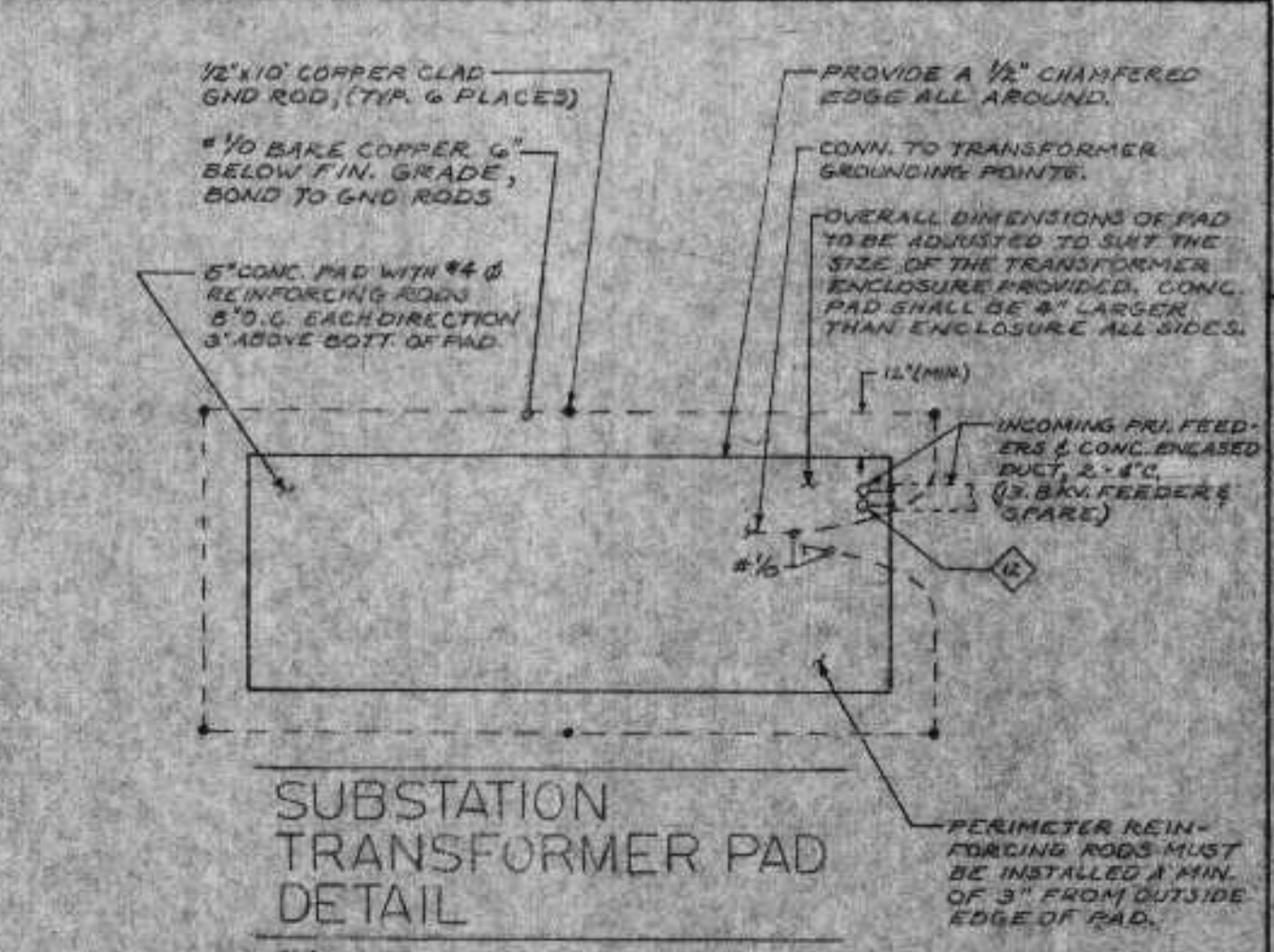
EXISTING BARMINATOR BUILDING AND MAIN PUMPING STATION PLAN
1/4" = 1'-0"



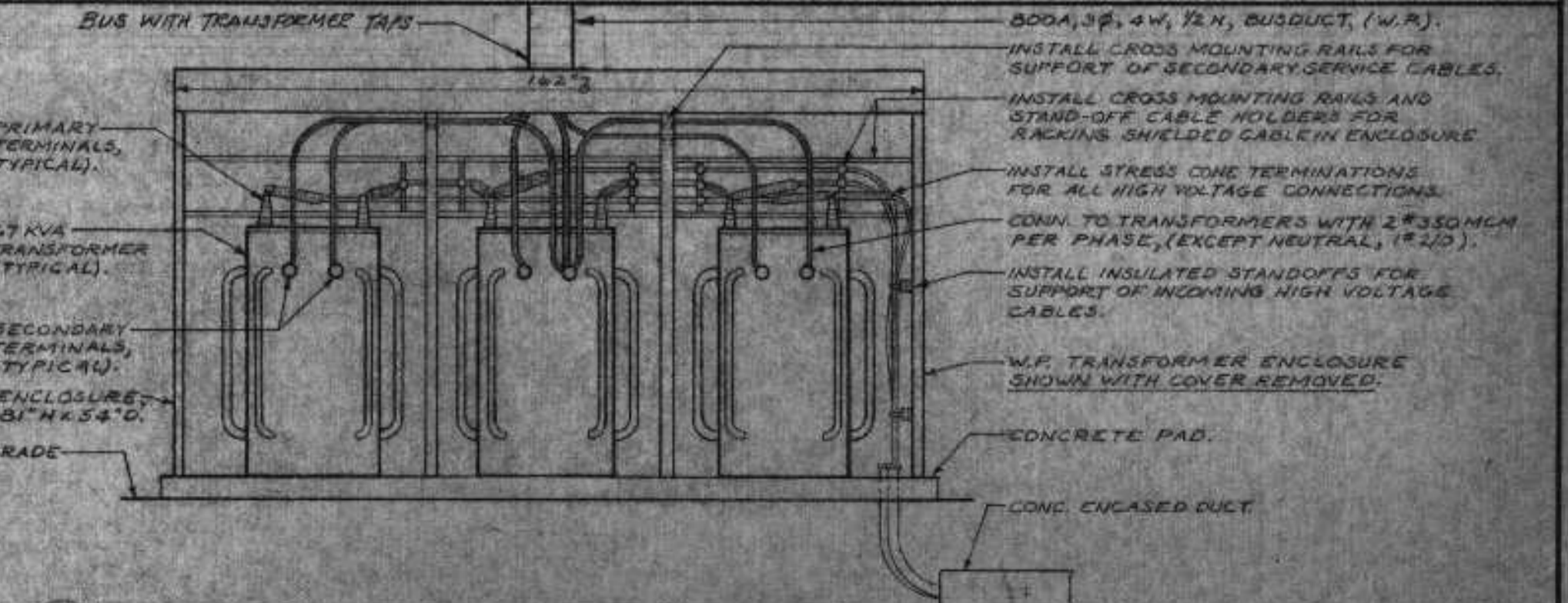
ONE-LINE DIAGRAM MOTOR CONTROL CENTER POWER DIST. SWBD.



SECTION 2/70



SUBSTATION TRANSFORMER PAD DETAIL
1/4" = 1'-0"



3/70 ELEVATION OF SUBSTATION NO. 3
NO SCALE

- GENERAL NOTES**
- EXISTING ELECTRICAL EQUIP IS SHOWN CROSSHATCHED.
 - FIELD VERIFY EXACT LOC. OF ALL EXIST. EQUIP BEFORE ROUGH-IN.
- ELECTRICAL NOTES**
- REMOVE EXIST. STR. FROM THIS CUBICLE & INSTALL NEW STR. AS SHOWN ON SCHEDULE. NEW STARTERS SHALL MATCH EXIST. EQUIP.
 - DISCONNECT POWER & CONTROL WIRING TO EXIST. SEWAGE PUMPS 1 THRU 4. RECONNECT NEW POWER TO PUMP MOTORS.
 - RE-USE EXIST. CONDUITS PRESENTLY SERVING EXIST. SEWAGE PUMPS FOR NEW MOTOR WIRING. REMOVE ALL EXIST. WIRING FROM EXIST. CONDUITS, RANDOM & CAP-OFF EXIST. CONDUITS THAT ARE NOT RE-USED.
 - REMOVE EXIST. 225A. MAIN HORIZONTAL BISSING AND INSTALL NEW 400A. MAIN BISSING IN SAME LOCATION. VERIFY EXACT REQ'D HGT'S AND PHYSICAL DIMENSIONS WITH ORIGINAL EQUIP. MFR.. EXIST. VERTICAL BUS SHALL BE RECONNECTED TO SERVE NEW & EXIST. LOADS.
 - DISCONNECT EXIST. 2 1/2", 3/4" FEEDER FROM EXIST. MAIN OPERATING BLDG. REMOVE WIRE, CONDUIT TO REMAIN FOR FUTURE USE.
 - IN BARMINATOR AND RACK CHAMBER REMOVE AND REPLACE ALL OF THE EXIST. INSTALLATION INCLUDING MOT. STARTERS & ENCLOSURES FOR ELECT. HEATER & MOT. NO. 3G.
 - ELECTRICAL ASSEMBLY AT 4'-6". CONTAINS PNEUMATIC TIME DELAY RELAY, HAND-OFF-AUTO SELEGTOR SW., & TERMINAL STRIP, SEE 8 SPEC.
 - NEW PULL BOX FOR CONNECTION TO HEATER AND MOTOR REG.
 - ROUTE NEW CONDUITS UP TO NEW PULLBOXES & FROM THAT POINT FOLLOW SAME ROUTING AS EXIST. CONDUIT TO PUMPING BLDG., REMOVE ALL EXISTING.
 - PROVIDE & INSTALL NEW LTR. RECEPT. & ALL ASSOCIATED CONDUIT, BOXES, SWITCHES & WIRING IN BARMINATOR RACK CHAMBER. NEW FEEDER, CONDUIT & SWITCHING SHALL BE INSTALLED IN SAME LOCATIONS AS EXIST. FIELD VERIFY.
 - 500KVA (3-157KVA) TRANSFORMER BANK IN PAD MOUNTED METAL ENCLOSURE. MIN. ENCLOSURE HT SHALL BE DETERMINED BY HT. OF TRANSFORMERS PROVIDED.
 - TERMINATE PRI. FEEDER CABLES IN TRANSFORMER ENCLOSURE AS DESCRIBED ON DETAIL 3 THIS SHEET.
 - CONDUITS STUBBED UP THRU PAD AND BUSHED FOR SECONDARY CABLE CONNECTIONS.
 - INSTALL MULTITRIDE ELECT. CONTROL ASSEMBLY IN BLANK CUBICLE. FOR CONTROL OF MOT. NO. 3G. CONTROL UNIT SHALL BE AS DESCRIBED IN SPEC.
 - REMOVE EXIST. STARTER PRESENTLY SERVING EXIST. BARMINATOR MOTOR, INSTALL NEW 20A, 3P, LB. IN LIEU THERE OF FOR CONN. TO MOT. NO. 3G.