

NOTE
 1. This building designated as Bldg. B for door and window schedules.
 2. Notes on blowers typical of all units in this bldg.
 3. All handrail shown in heavy lines on this plan view.
 See elevations for clarification - include handrail on stairs.

NOTES
 Run 1" copper 1/2" dia. line
 across wall into each
 locker. Lead to blower
 after leader to 1/2" dia. Cu.
 1" dia. 1/2" B. 2

Standard double
 steel door for
 equipment access

Permissible size
 plates - See sheet
 25

Water cooled air
 cooler - 2500 CFM
 85°F - 75°F cooling
 with blower. Typical
 air blower. See also
 pipe and wire. To
 compare 2" through dia.
 tubes with 1/2" dia.
 blower tube. See sheet

8" drainage pipes
 - 2" dia. at
 all ground

Brick fence

REVIEWED AND APPROVED BY THE
 DIV. OF ENVIRONMENTAL PROTECTION,
 DEPT. OF NATURAL RESOURCES,
 IN ACCORDANCE WITH SEC. 146.04,
 WIS. STATS. SUBJECT TO THE CON-
 DITIONS SET FORTH IN THE LETTER
 OF APPROVAL.
 THOMAS G. FRANGOS
 ADMINISTRATOR

APPROVAL NO.
 72 355

DATE: FEB 4 '74

DR: J... 1974

PLAN

NOTES
 1. See sheet 2 for F&I Aluminum
 2. See sheet 3 for F&I Steel
 3. See sheet 4 for F&I Aluminum
 4. See sheet 5 for F&I Steel

DESIGNED	DATE
DRAWN	DATE
CHECKED	DATE
APPROVED	DATE

DONESTRO, ROSENE, ANDERLIK & ASSOC., INC.
 ST. PAUL, MINNESOTA

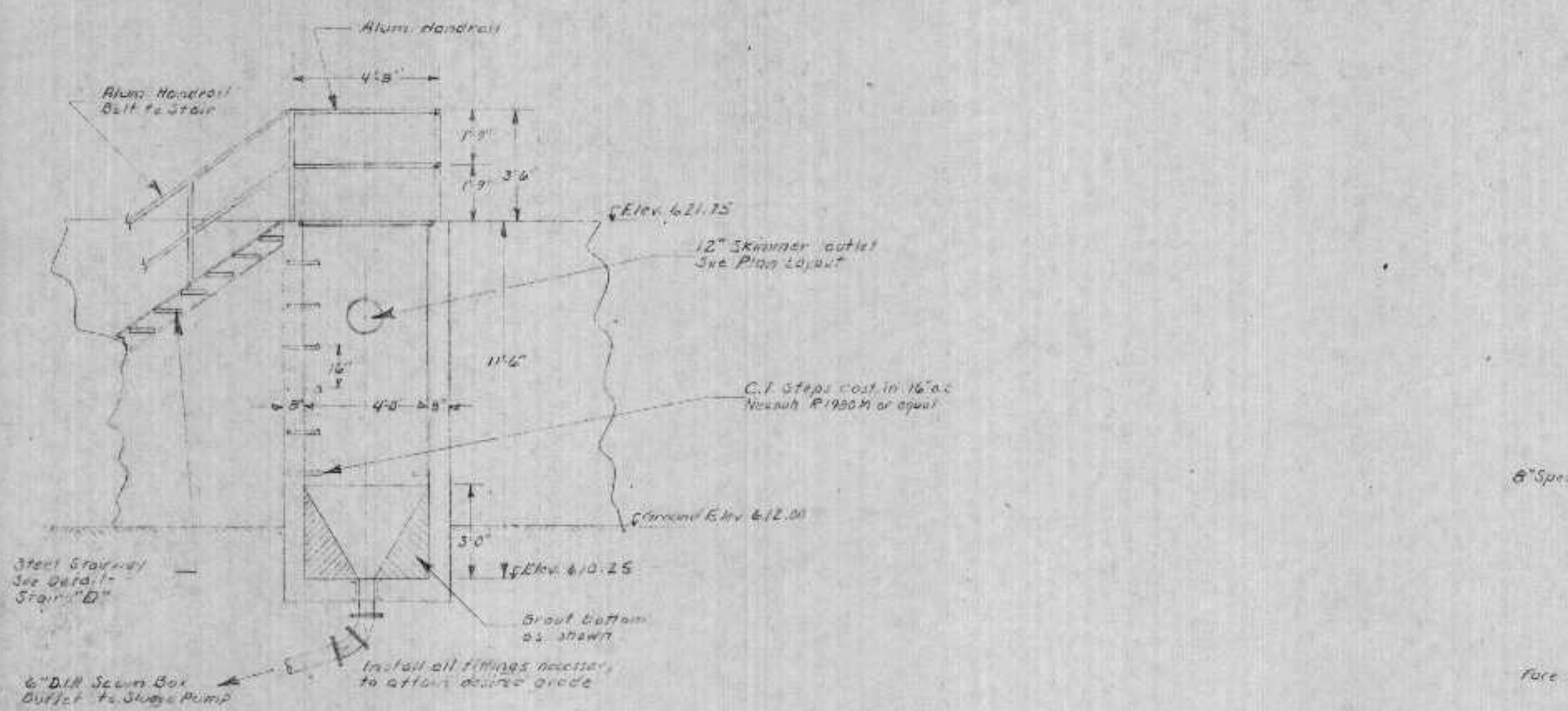
SUPERIOR, WISCONSIN
 DATE: FEBRUARY 2, 1974

PRIMARY SETTLING TANKS

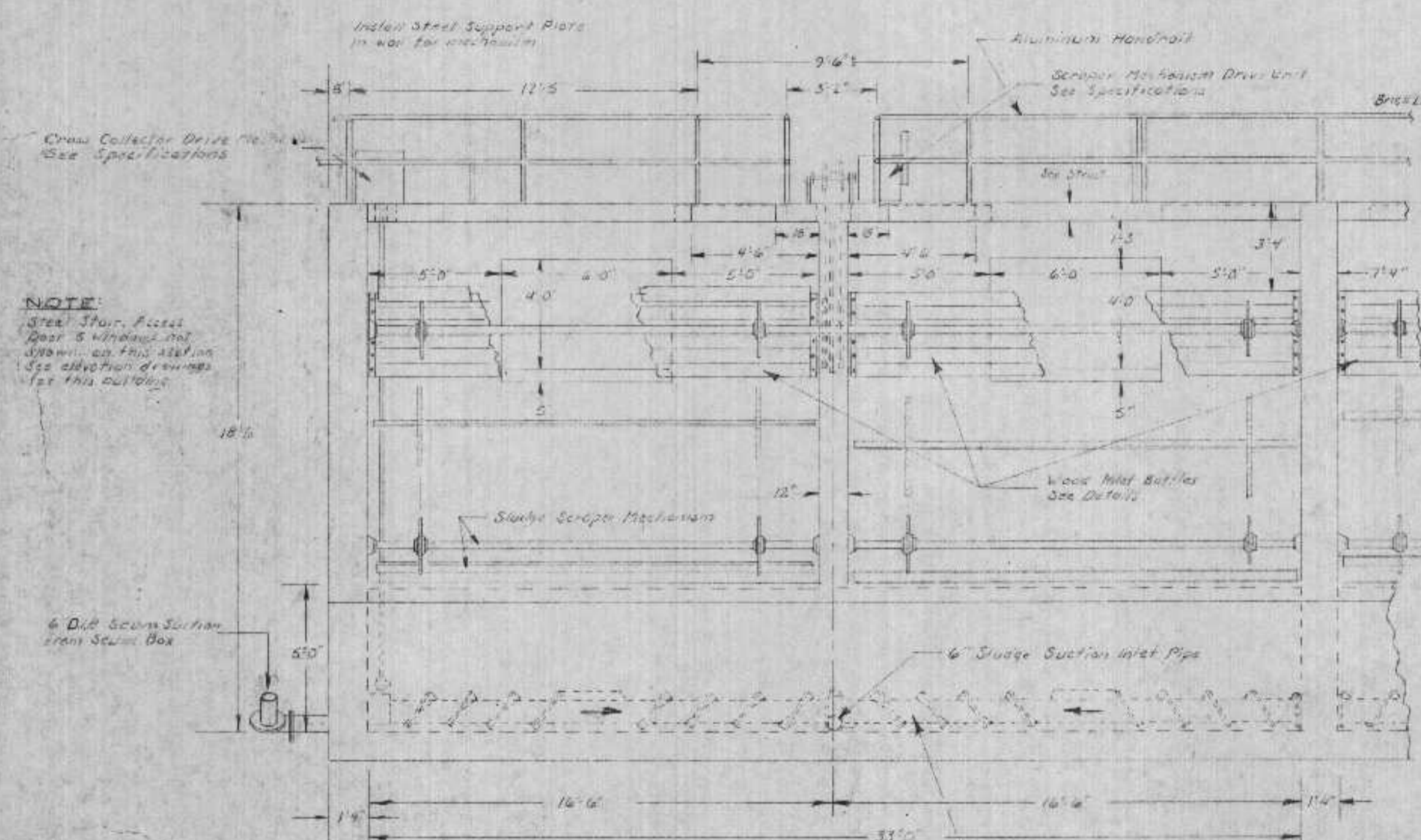
REVIEWED AND APPROVED BY THE
 DIV. OF ENVIRONMENTAL PROTECTION,
 WIS. DEPT. NATURAL RESOURCES,
 IN ACCORDANCE WITH SEC. 144.04,
 WIS. STATS. SUBJECT TO THE CON-
 DITIONS SET FORTH IN THE LETTER
 OF APPROVAL.
 THOMAS G. FRANGOS
 ADMINISTRATOR

APPROVAL NO.
72 355

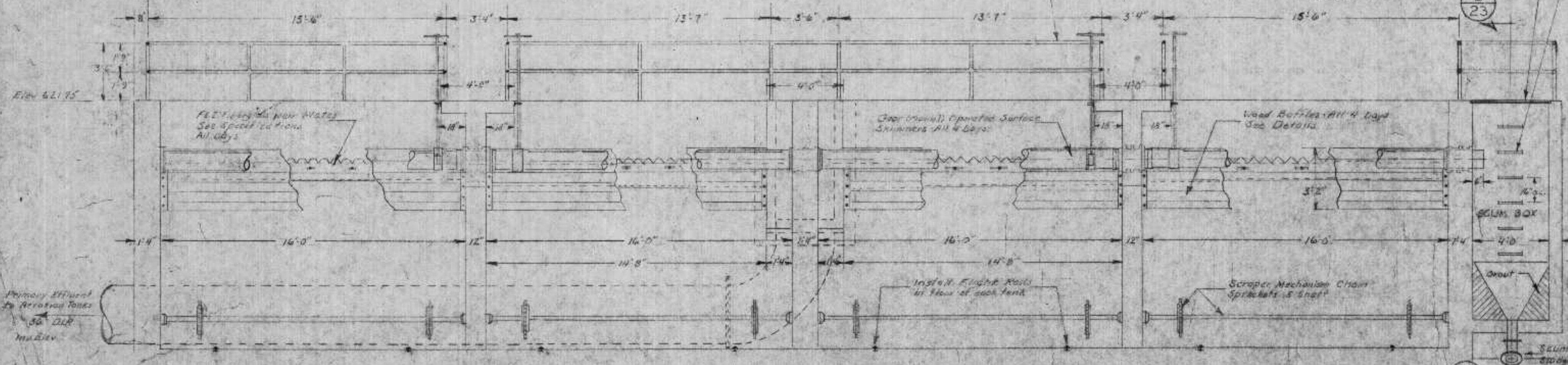
DATE: FEB 4 '74



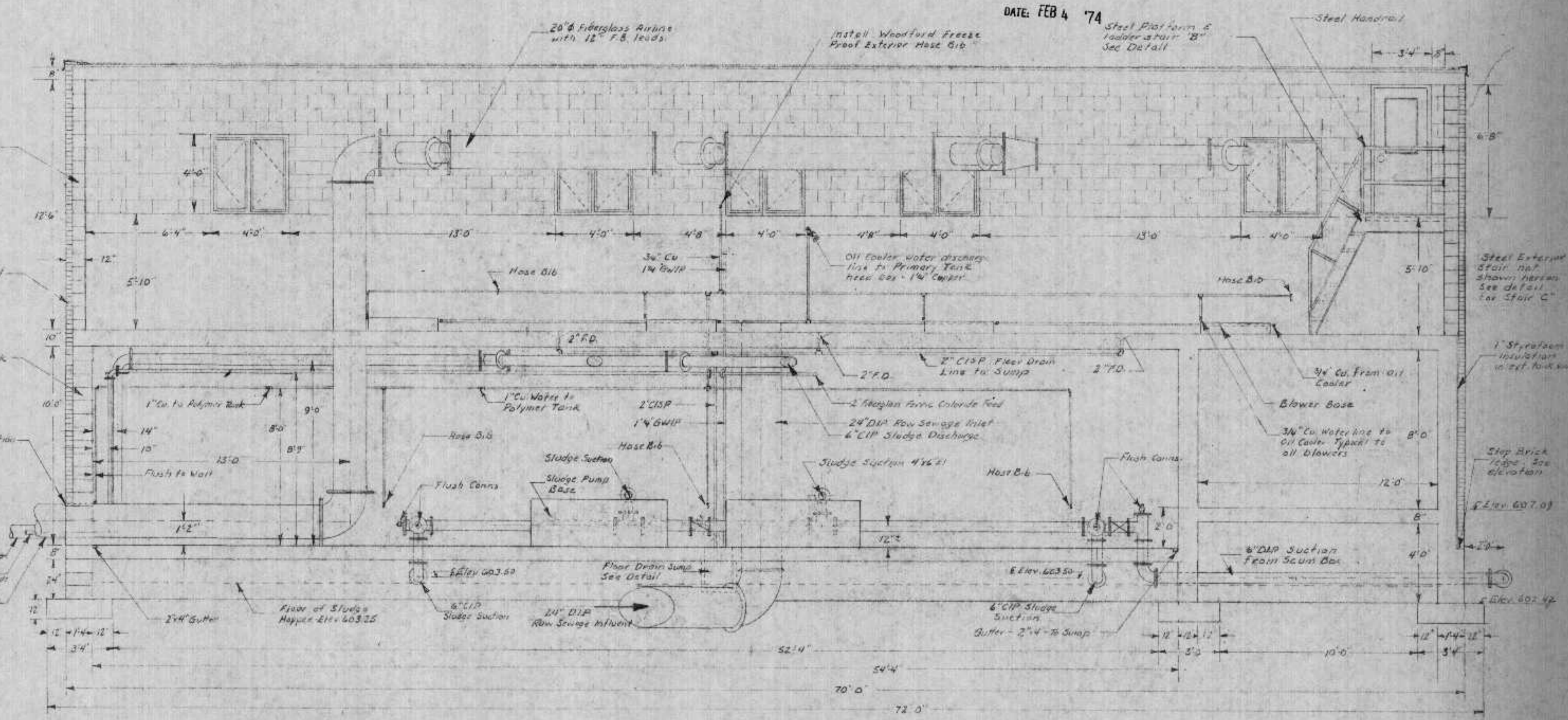
SECTION B-B
 Scale: 1/4" = 1'-0"



PARTIAL SECTION C-C
 Scale: 1/4" = 1'-0"

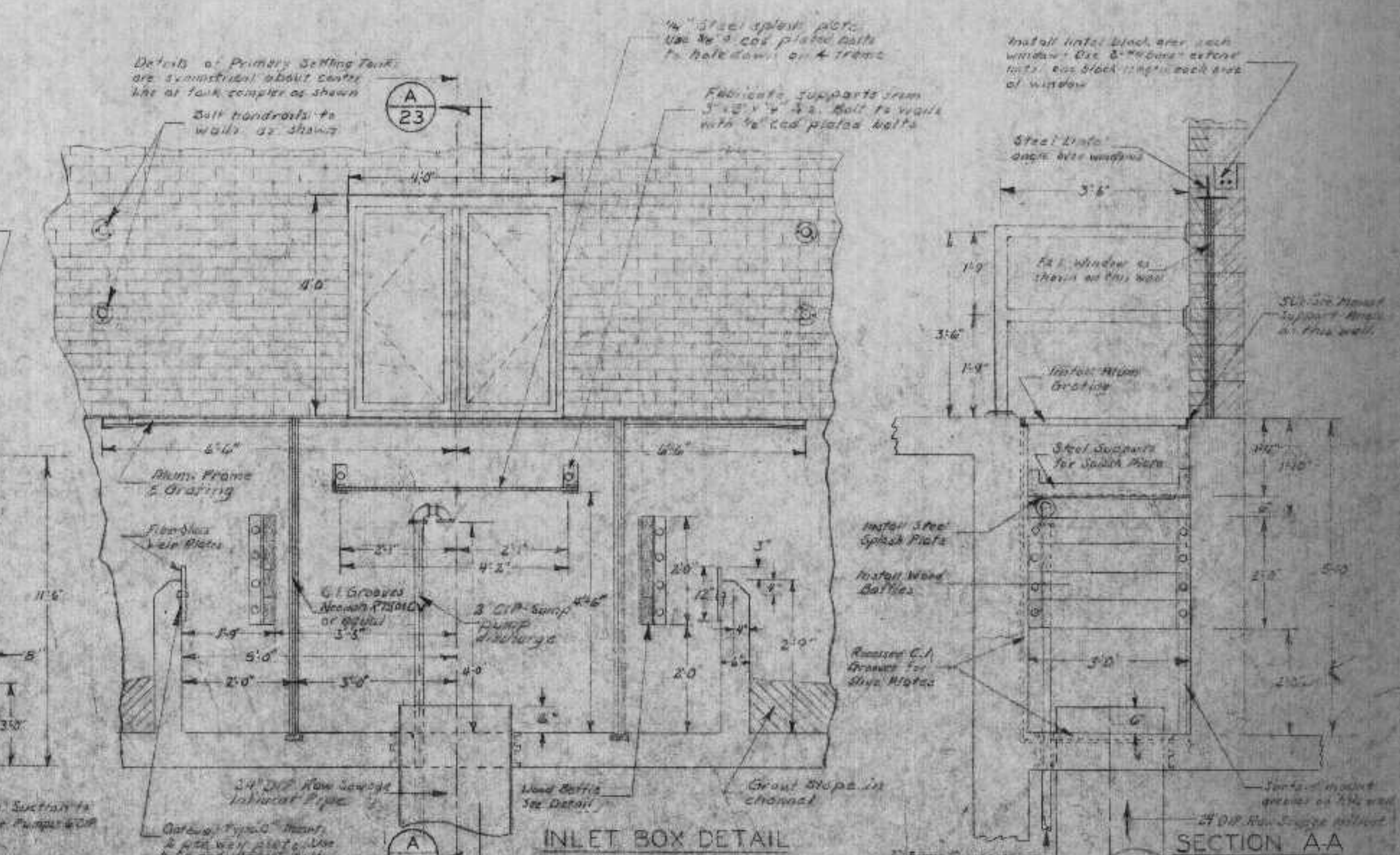


SECTION E-E
 Scale: 1/4" = 1'-0"



SECTION D-D
 Scale: 1/4" = 1'-0"

NOTE
 Contractor to furnish & install all pipe supports
 & hangers as necessary.



INLET BOX DETAIL
 Scale: 1/2" = 1'-0"

REVISIONS

BONESTROO, ROSENE, ANDERLIK & ASSOC., INC.
 ST. PAUL, MINNESOTA

SUPERIOR, WISCONSIN
 DATE: FEBRUARY 2, 1974
 CORR. 6888A

PRIMARY TANK SECTIONS AND DETAILS
 SHEET 23 OF 24

DNR JAN 3 1974

DOOR & WINDOW SCHEDULE DETAILS

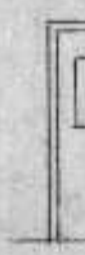
NO	LOCATION	TYPE	ROUGH OPNG	SIZE	MATERIAL	GLASS	LOUVER	REMARKS
A-1	Bypass Retention Tank	II	3'-4" x 6'-10"	3'-0" x 6'-8"	Steel			Provide for Threshold
A-2	Grit Building	III	3'-4" x 6'-10"	3'-0" x 6'-8"	Steel	24" x 36"		Provide for Threshold
A-3	Grit Building	III	3'-4" x 6'-10"	3'-0" x 6'-8"	Steel	24" x 36"		Provide for Threshold
A-4	Grit Building	II	3'-4" x 6'-10"	3'-0" x 6'-8"	Steel			
A-5	Grit Building	I	1'-10" x 12'-0"					
B-1	Blower and Chemical Building	III	3'-0" x 6'-8"	2'-8" x 6'-6"	Steel	22" x 34"		Provide for Threshold
B-2	Blower and Chemical Building	V	3'-4" x 6'-10"	2'-2 1/2" x 6'-8"	Steel	22" x 42"		Provide for Threshold, Provide Astragal
B-3	Blower and Chemical Building	V	3'-4" x 6'-10"	2'-2 1/2" x 6'-8"	Steel	22" x 42"		Provide for Threshold, Provide Astragal
C-1	Digester Control Building	Y	5'-5" x 7'-4"	2'-2 1/2" x 7'-2"	Steel	22" x 42"		Provide for Threshold
C-2	Digester Control Building	Y	3'-4" x 6'-10"	3'-0" x 6'-8"	Steel			
AW-1	Grit Building	VI	2'-8" x 4'-0"		Aluminum			
AW-2	Grit Building	VI	2'-8" x 4'-0"		Aluminum			
AW-3	Grit Building	VI	2'-8" x 4'-0"		Aluminum			
BW-1	Blower and Chemical Building	VIII	4'-0" x 4'-0"		Aluminum			
BW-2	Blower and Chemical Building	VIII	4'-0" x 4'-0"		Aluminum			
BW-3	Blower and Chemical Building	VIII	4'-0" x 4'-0"		Aluminum			
BW-4	Blower and Chemical Building	VIII	4'-0" x 4'-0"		Aluminum			
BW-5	Blower and Chemical Building	VIII	4'-0" x 4'-0"		Aluminum			
BW-6	Blower and Chemical Building	VIII	4'-0" x 4'-0"		Aluminum			
BW-7	Blower and Chemical Building	VIII	4'-0" x 4'-0"		Aluminum			
BW-8	Blower and Chemical Building	VIII	4'-0" x 4'-0"		Aluminum			
BW-9	Blower and Chemical Building	VIII	4'-0" x 4'-0"		Aluminum			
BW-10	Blower and Chemical Building	VIII	4'-0" x 4'-0"		Aluminum			
BW-11	Blower and Chemical Building	VIII	3'-4" x 4'-0"		Aluminum			
BW-12	Blower and Chemical Building	VIII	3'-4" x 4'-0"		Aluminum			
BW-13	Blower and Chemical Building	VIII	3'-4" x 4'-0"		Aluminum			
DW-1	Digester Control Building	VII	4'-1" x 4'-2 1/2"		Aluminum			
DW-1	Existing Control Building	VIII	2'-9" x 3'-4 1/2"		Aluminum			
DW-2	Existing Control Building	VIII	2'-9" x 3'-4 1/2"		Aluminum			



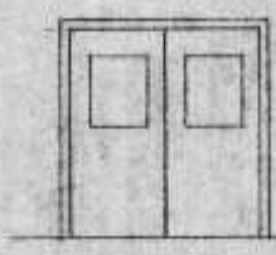
Type I



Type II



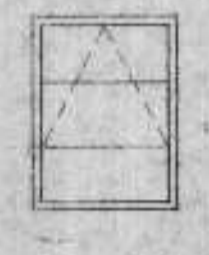
Type III



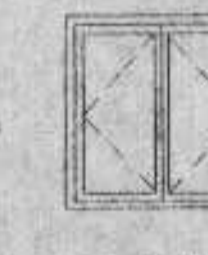
Type IV



Type V



Type VI

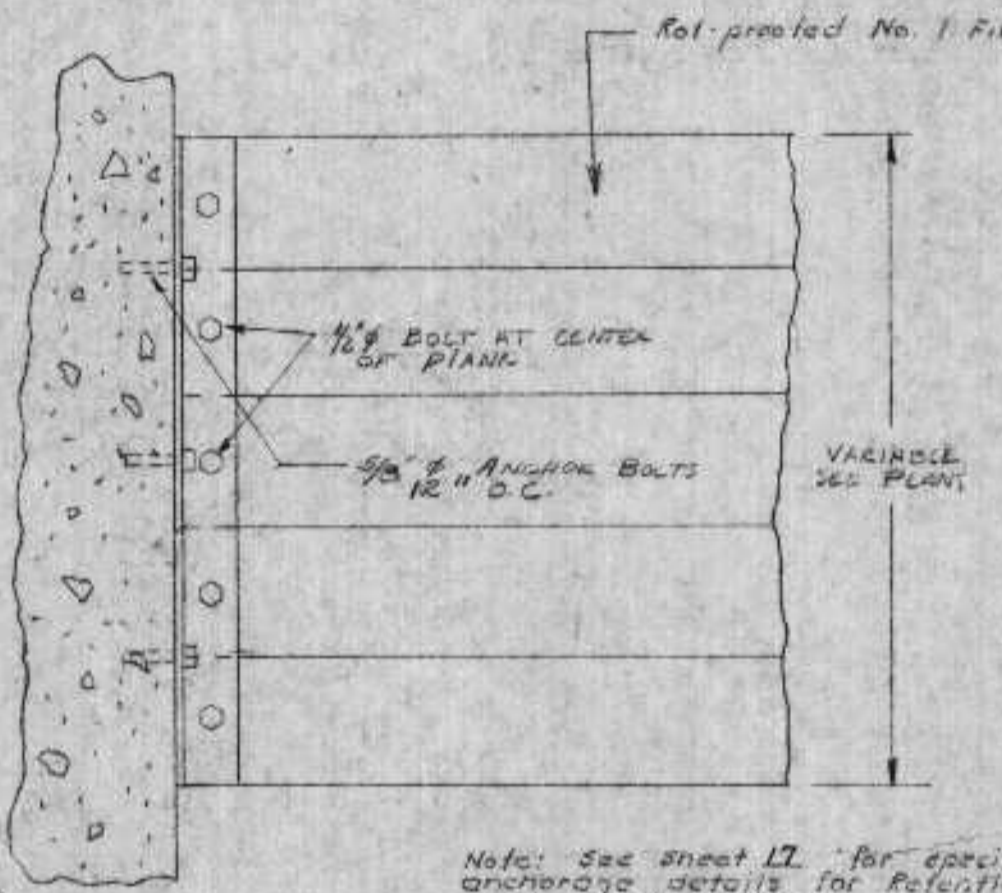
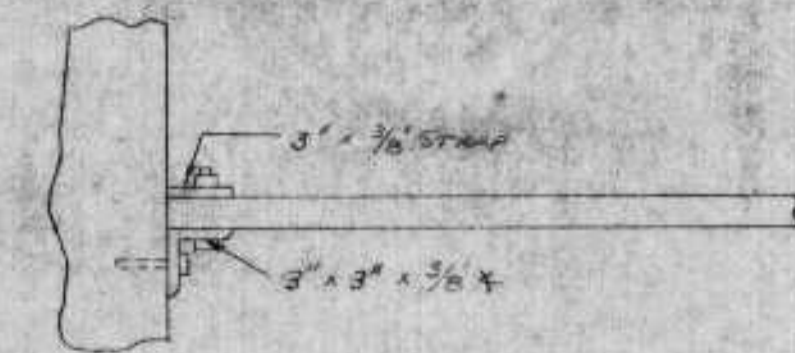


Type VII



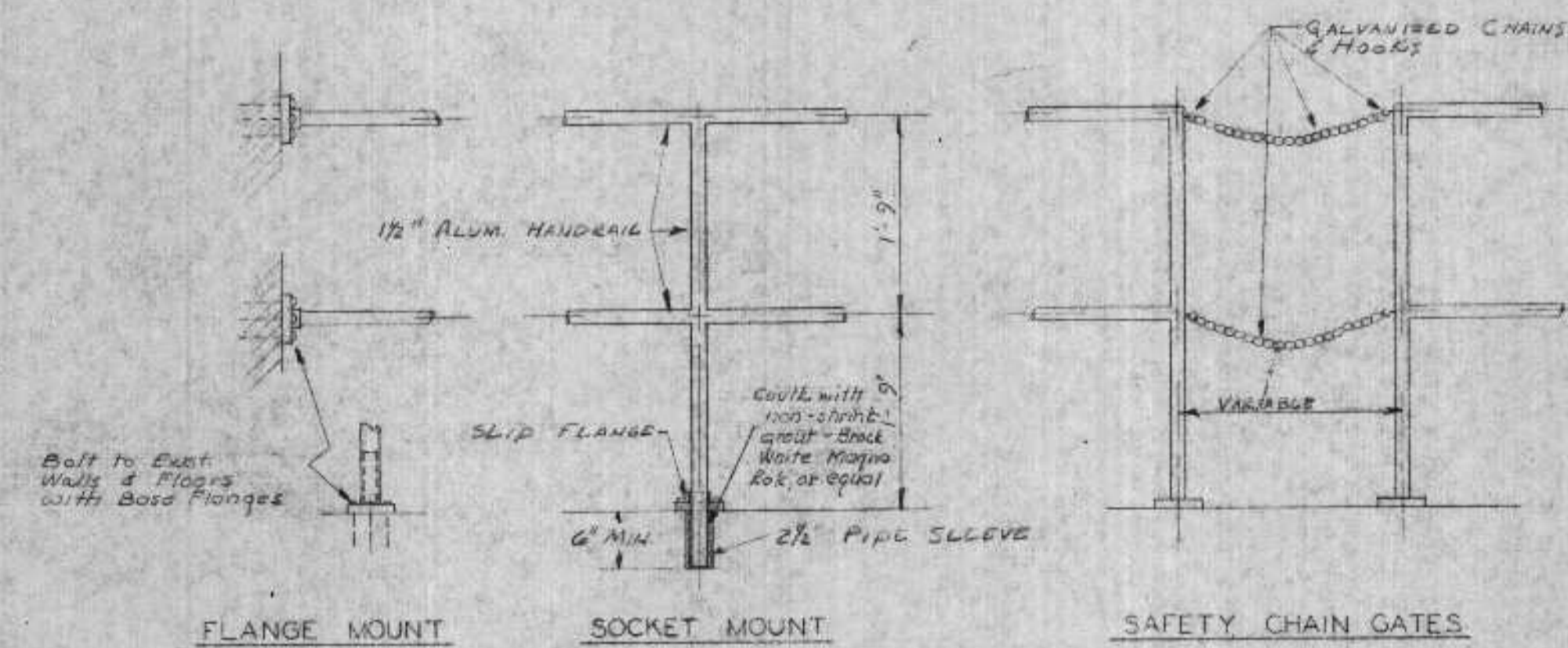
Type VIII

See sheet #17 for door & window frame details

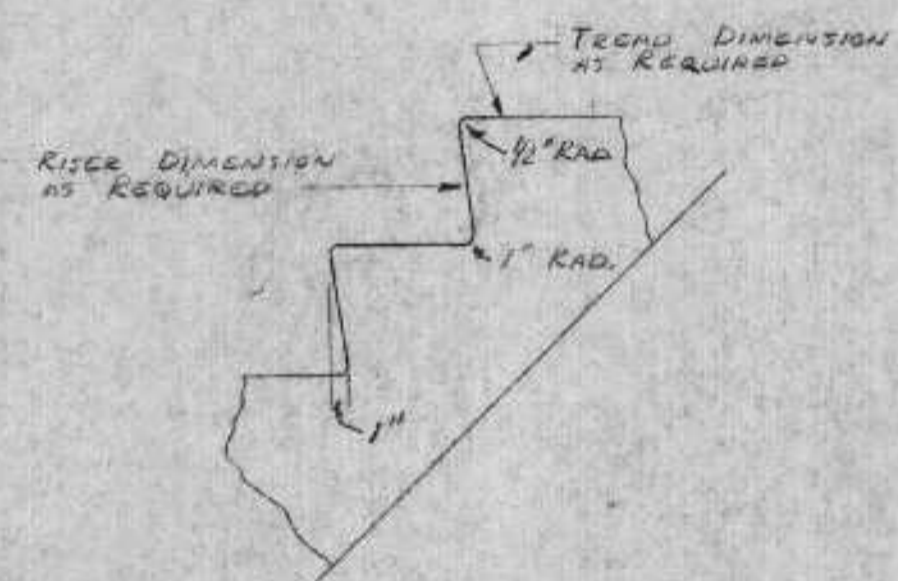


Note: See sheet 17 for specific anchorage details for Retention Tank wood baffle.

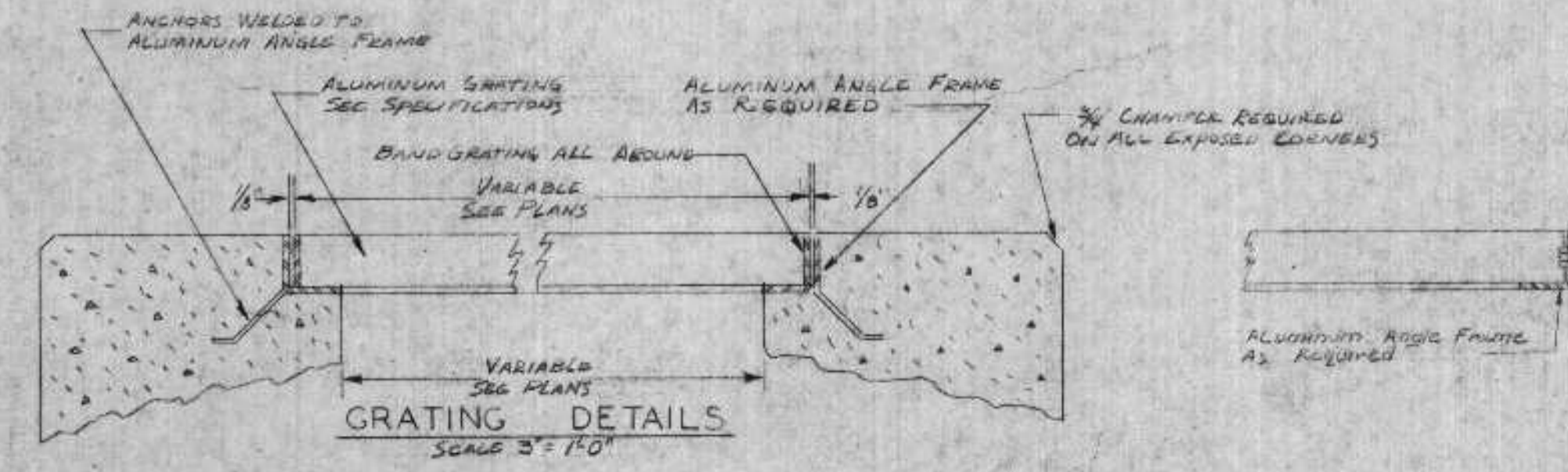
WOOD BAFFLE DETAIL
SCALE 1" = 1'-0"



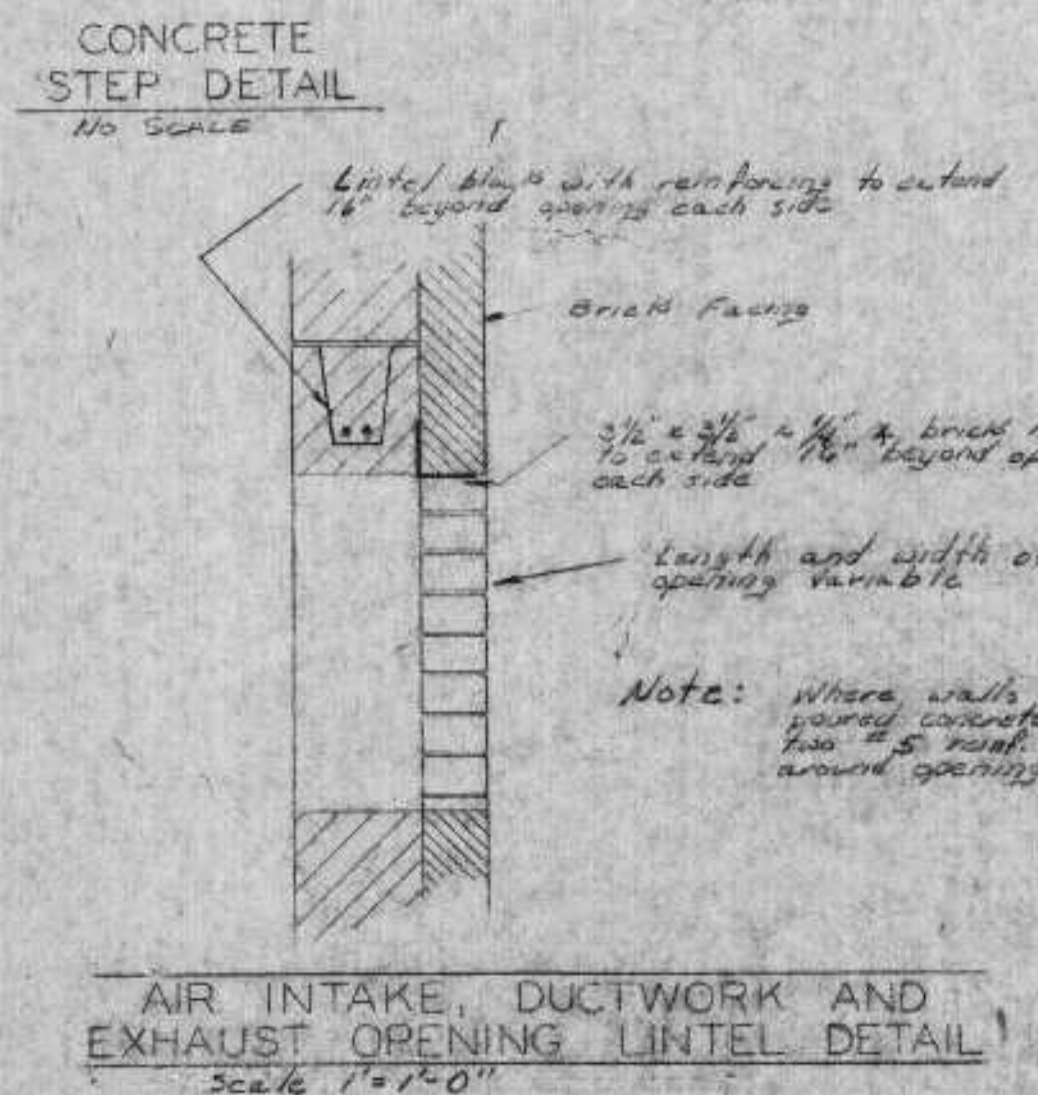
HANDRAIL DETAILS
SCALE 3/4" = 1'-0"



FLUSHING CONNECTION
SCALE 1/2" = 1'-0"



GRATING DETAILS
SCALE 3" = 1'-0"



AIR INTAKE, DUCTWORK AND EXHAUST OPENING LINTEL DETAIL
SCALE 1" = 1'-0"

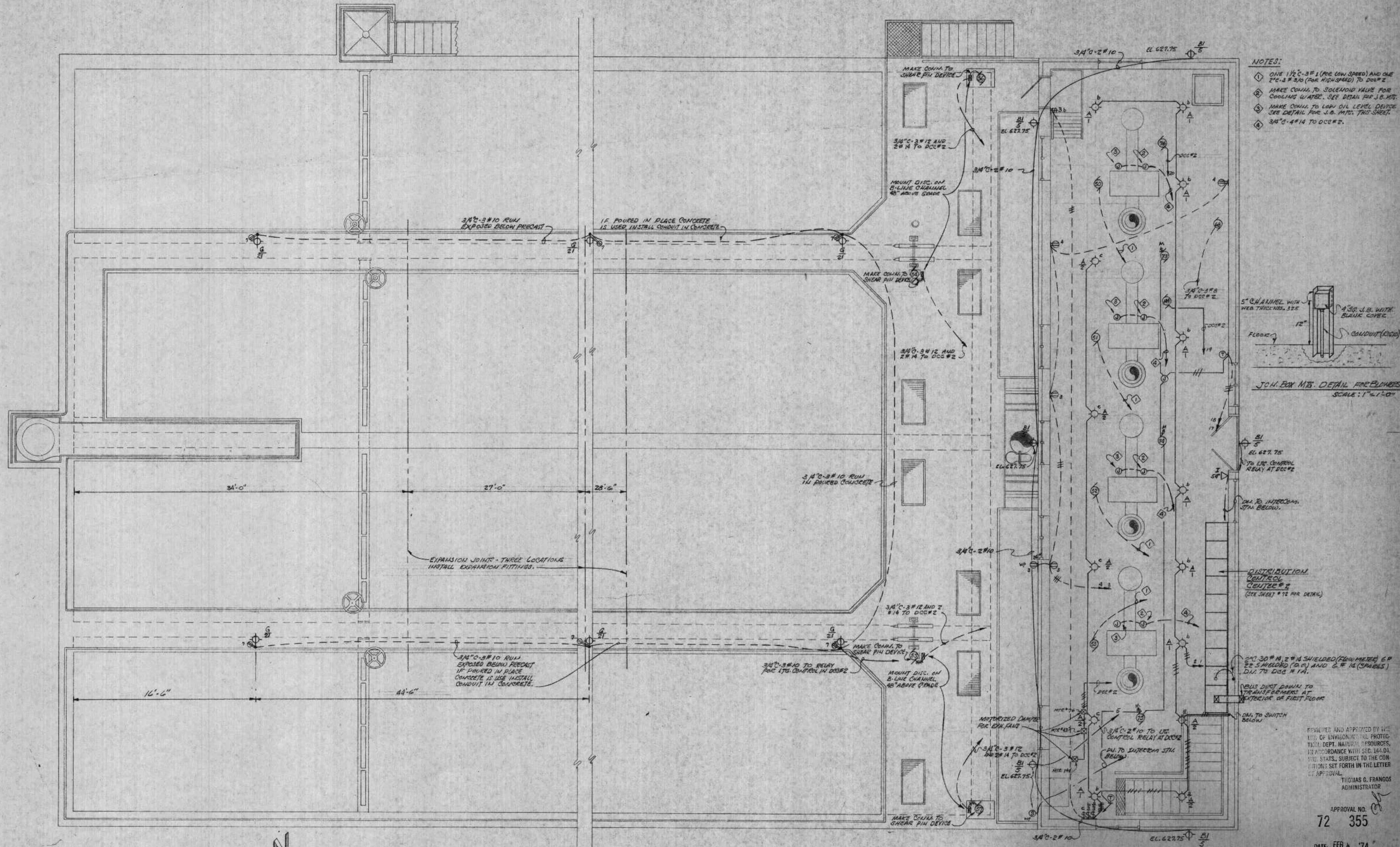
REVIEWED AND APPROVED BY THE
DEPT. OF ENVIRONMENTAL PROTECTION
NATURAL RESOURCES
IN ACCORDANCE WITH SEC. 144.01,
WIS. STAT., SUBJECT TO THE CON-
DITIONS SET FORTH IN THE LETTER
OF APPROVAL.

THOMAS G. FRANGOS
ADMINISTRATOR

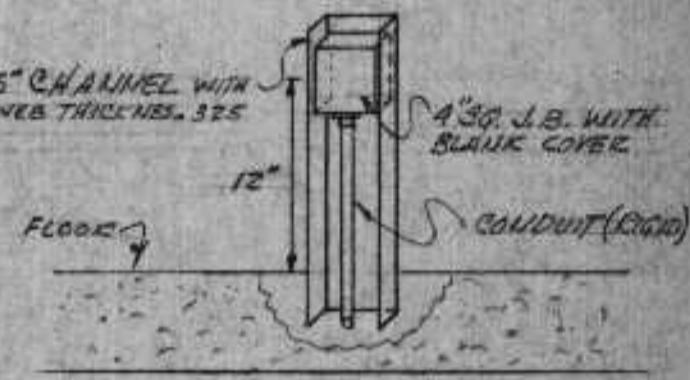
APPROVAL NO.
72 355

DATE: FEB 4 '74

DWG JAN 3 1974



- NOTES:**
- ① ONE 1 1/2" - 3" (FOR LOW SPEED) AND ONE 2" - 3" 3/4" (FOR HIGH SPEED) TO DOC# 2
 - ② MAKE CONDUIT TO SOLENOID VALVE FOR COOLING WATER. SEE DETAIL FOR J.B. MTS.
 - ③ MAKE CONDUIT TO LOW OIL LEVEL DEVICE. SEE DETAIL FOR J.B. MTS. THIS SHEET.
 - ④ 3/4" - 4" 1/4 TO DOC# 2.



J.B. BOX MTS. DETAIL FOR BUILDINGS
SCALE: 1" = 1'-0"

DISTRIBUTION CONTROL CENTER # 2
(SEE SHEET # 12 FOR DETAIL)

2" - 30" 1/4 2" 1/4 SHIELDED (FLOW METER) 6" 2" 5" HELD (P.C.) AND 2" 1/4 (SPARES) D.U. TO DOC # 14.

PLUS DUCT DOWN TO TRANSFORMERS AT EXTERIOR OF FIRST FLOOR

D.U. TO SWITCH BELOW

REVIEWED AND APPROVED BY THE
OFF. OF ENVIRONMENTAL PROTECTION
TECH. DEPT. NATURAL RESOURCES,
IN ACCORDANCE WITH SEC. 164.01,
WIS. STATS., SUBJECT TO THE CON-
DITIONS SET FORTH IN THE LETTER
OF APPROVAL.

THOMAS G. FRANGOS
ADMINISTRATOR

APPROVAL NO.
72 355

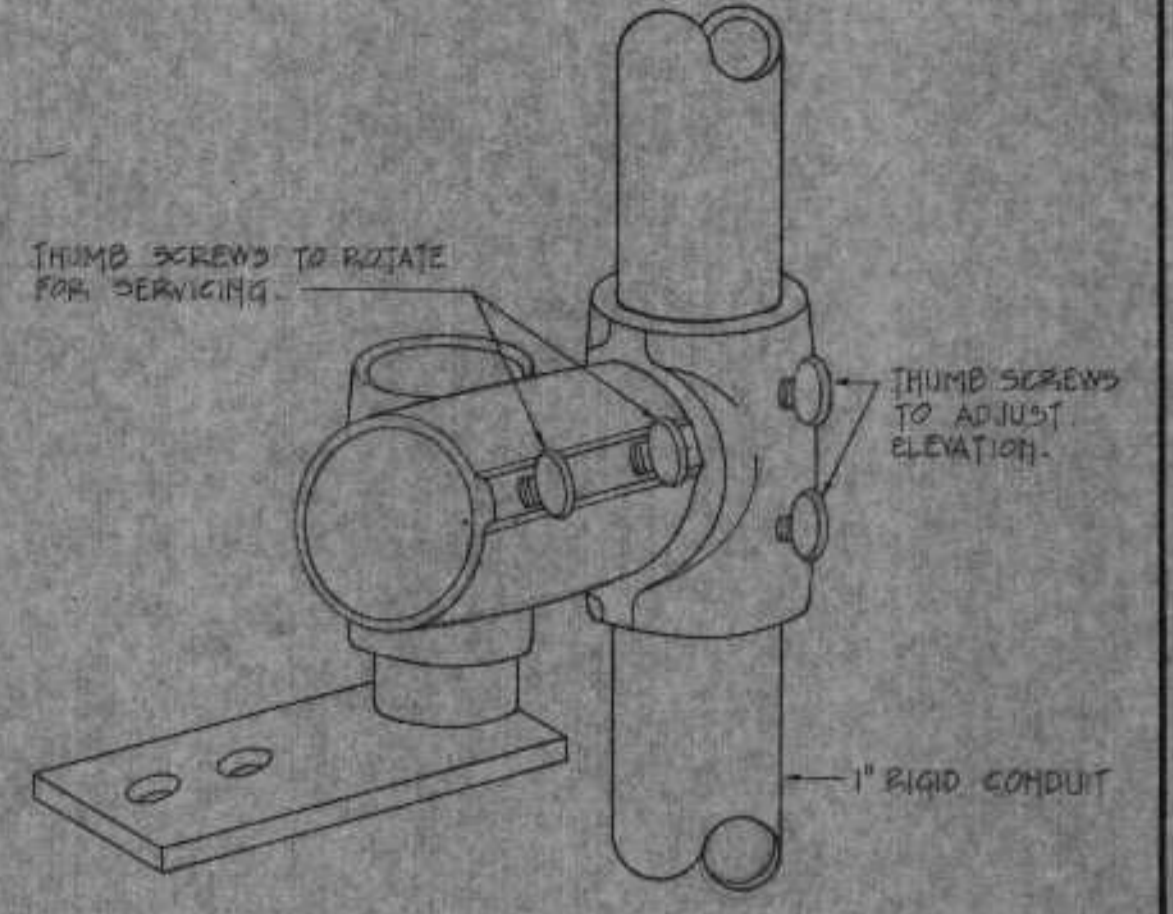
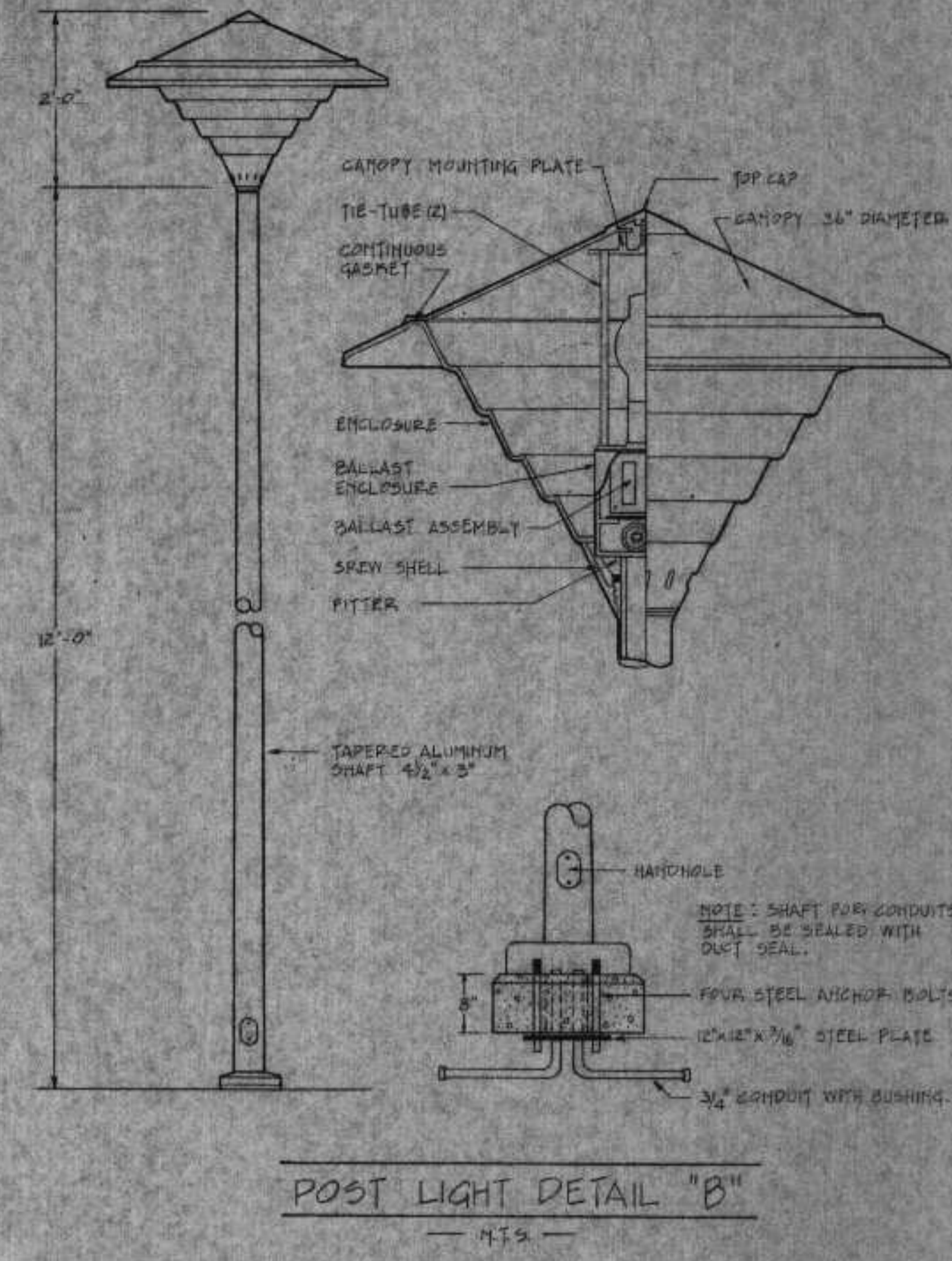
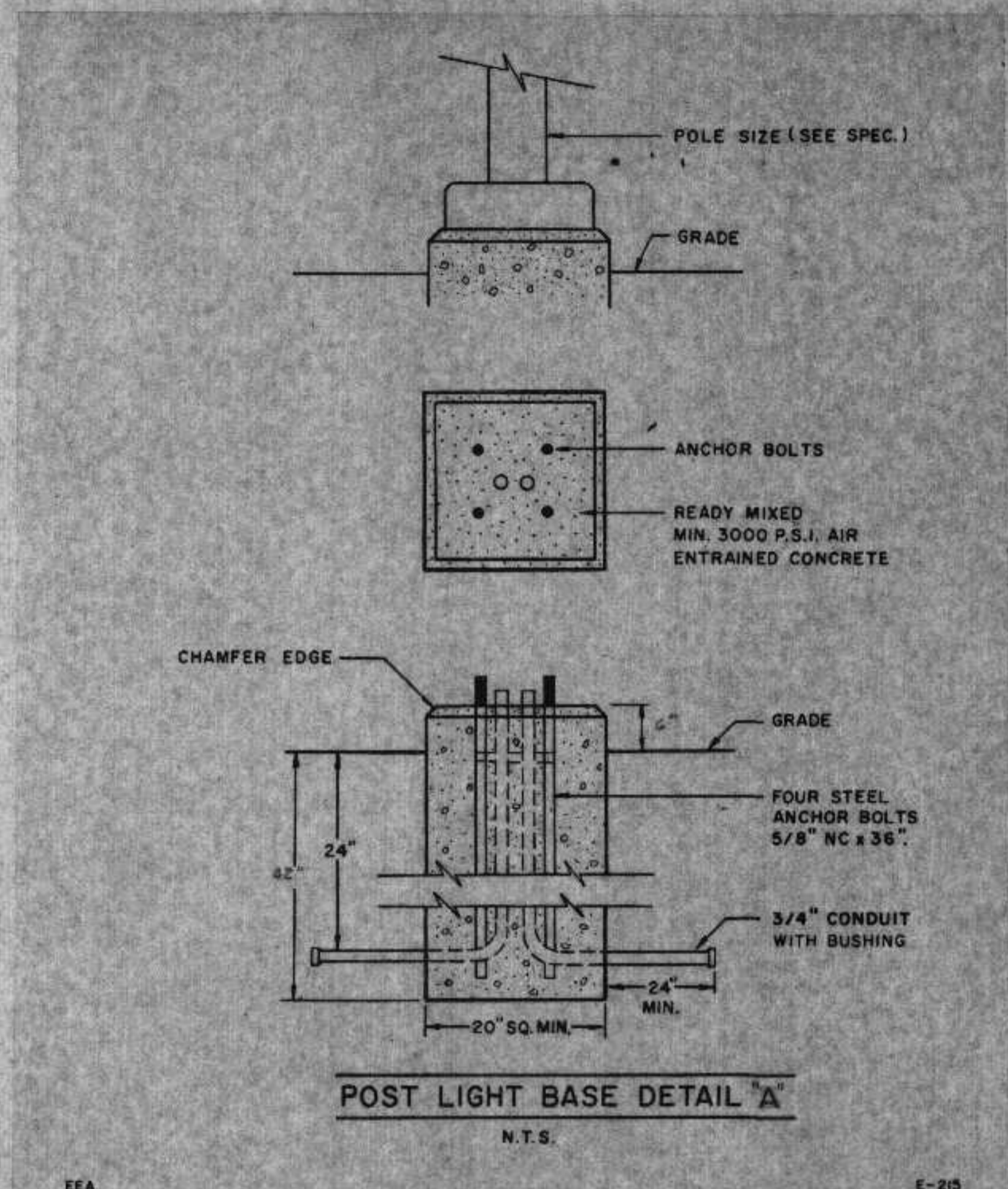
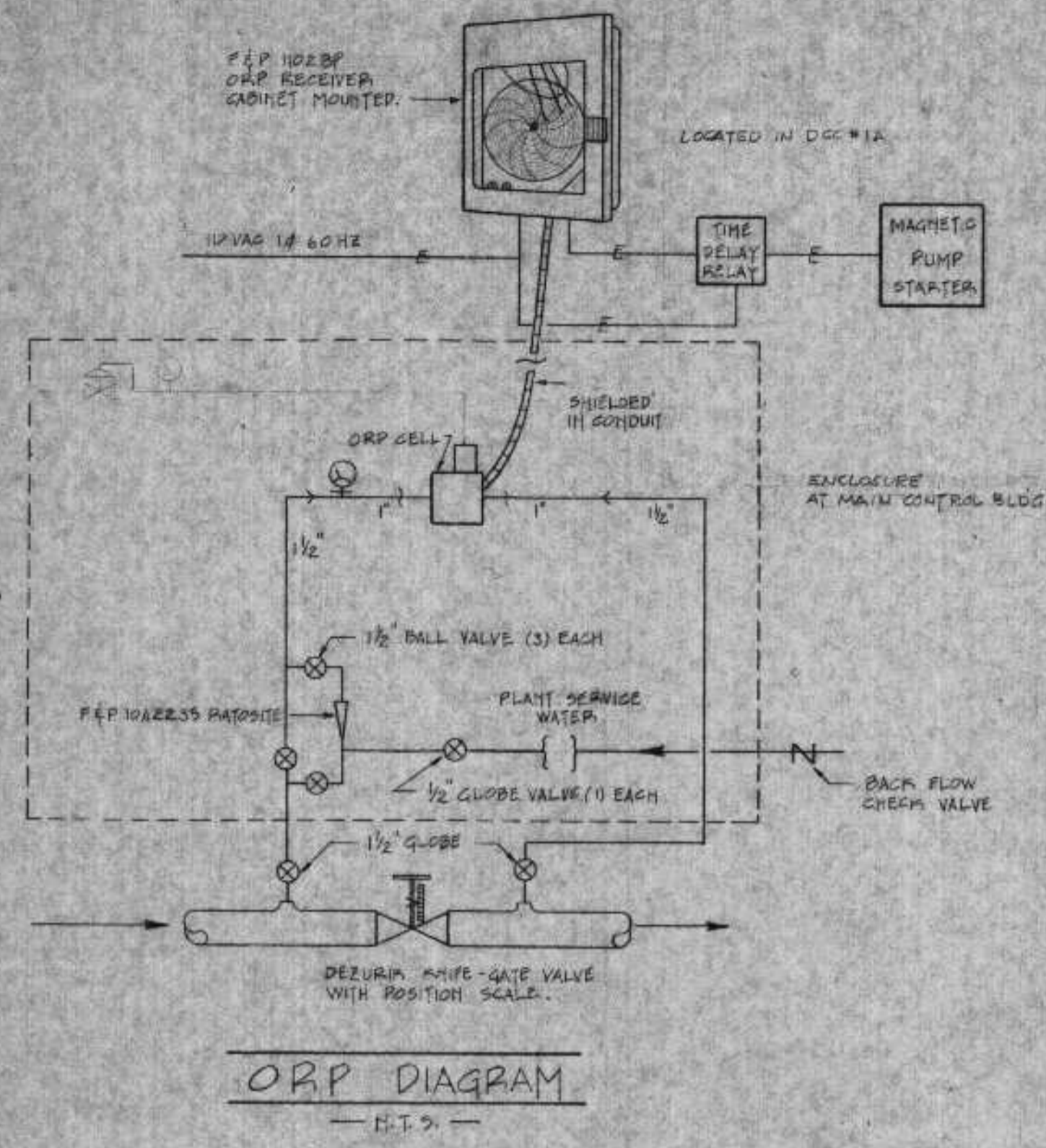
DATE: FEB 4 '78

DNR JAN 3 1974

PLAN OF PRIMARY SETTLING TANKS SCALE: 1/4" = 1'-0"

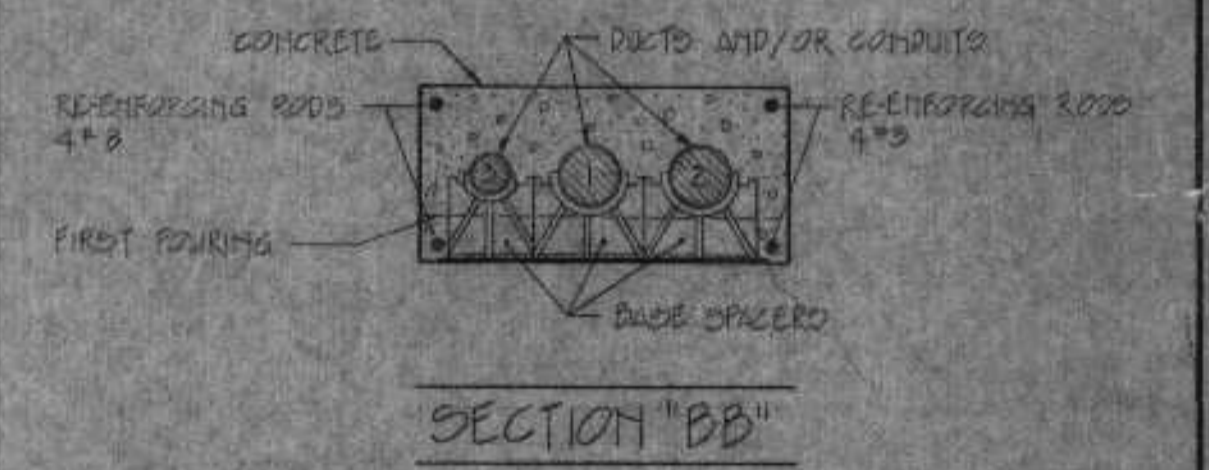
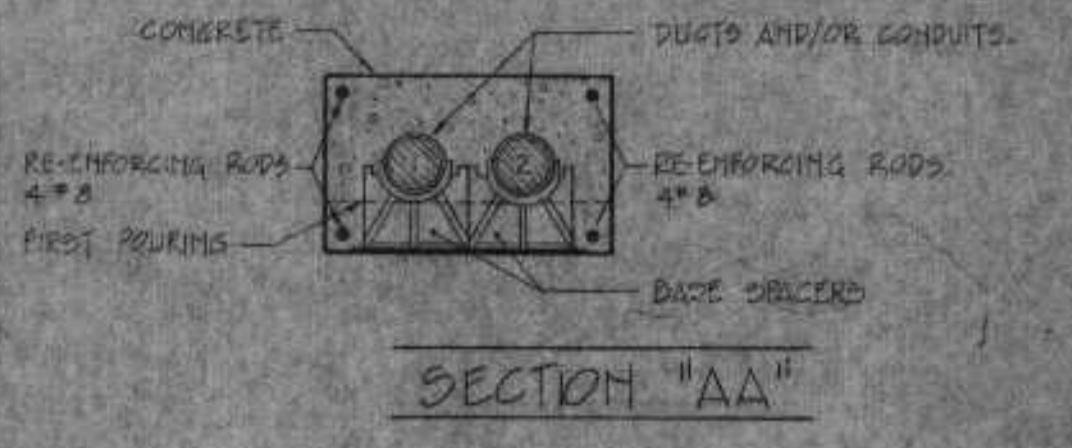


REVISIONS	
DESIGN	
APPROVED	



NOTE: ALL THREAD CONDUIT SHALL BE WATERTIGHT USE TEFLON TAPE

UNIVERSAL MOUNTING BRACKET
N.T.S.



- NOTES:
1. 4" DUCT WITH PRIMARY CABLE.
 2. 4" DUCT FOR FUTURE USE.
 3. 2" DUCT FOR TELEPHONE CO.
- NOTE: REFER TO SHEET NO. 63 FOR LOCATION.

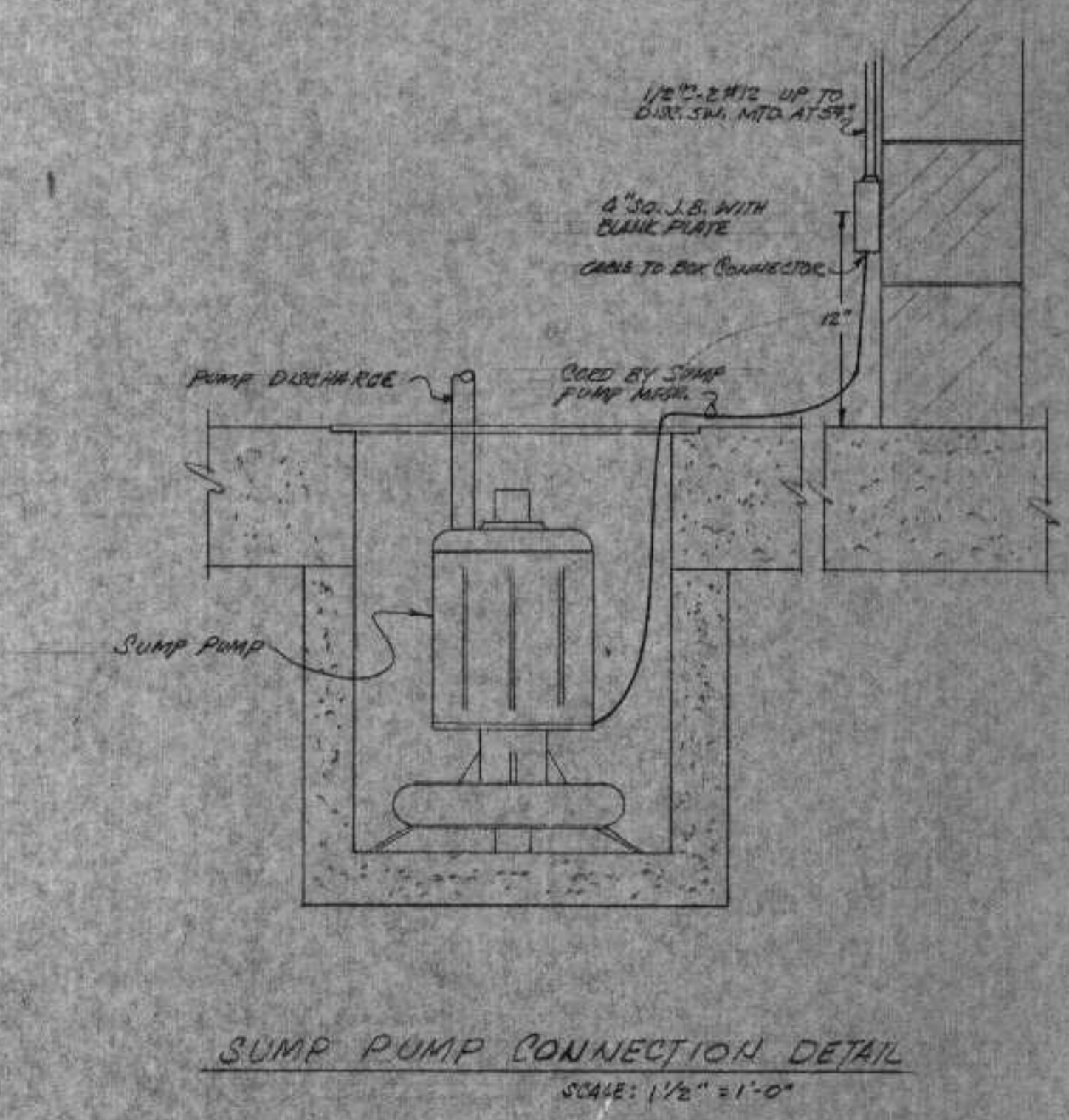
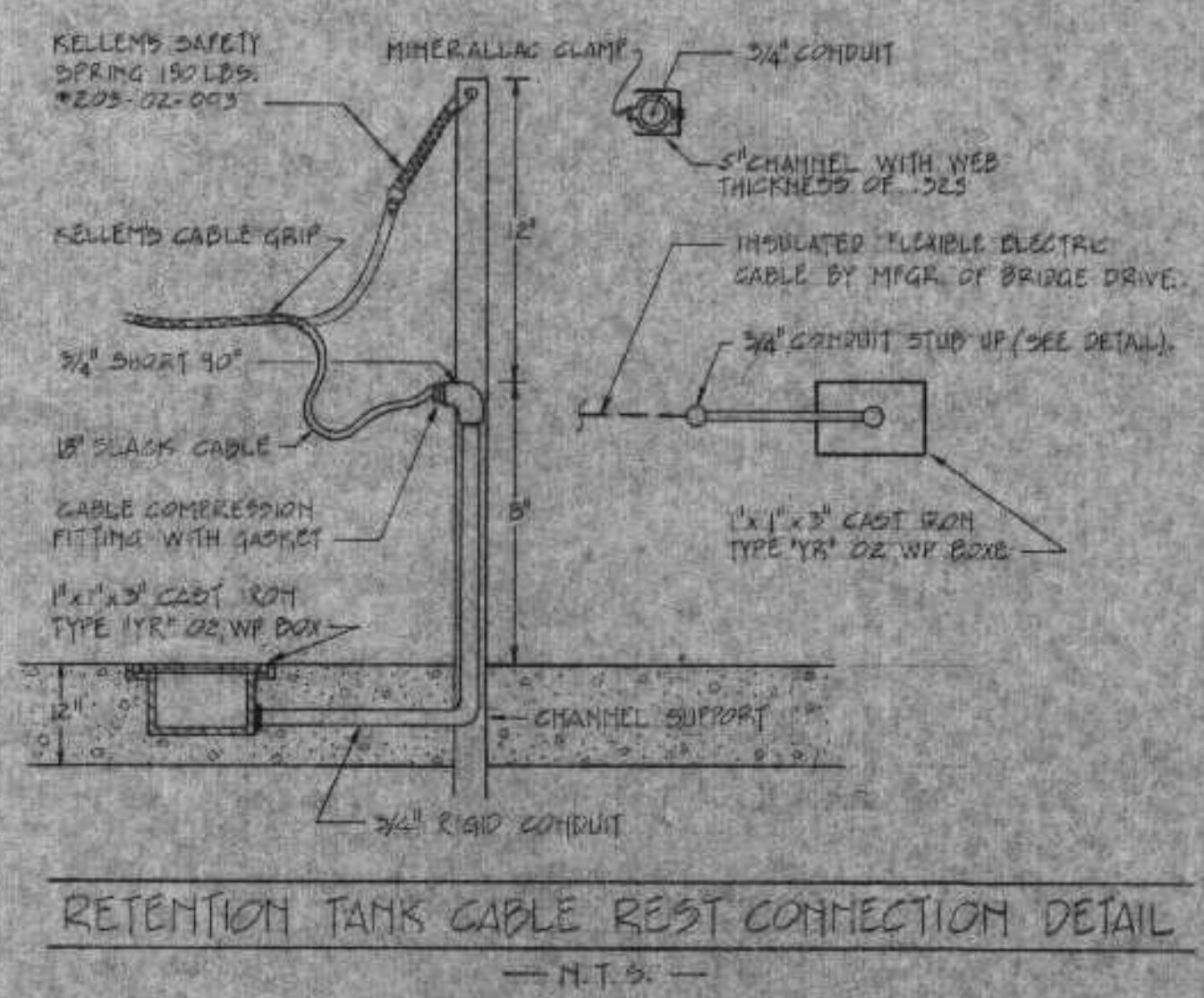
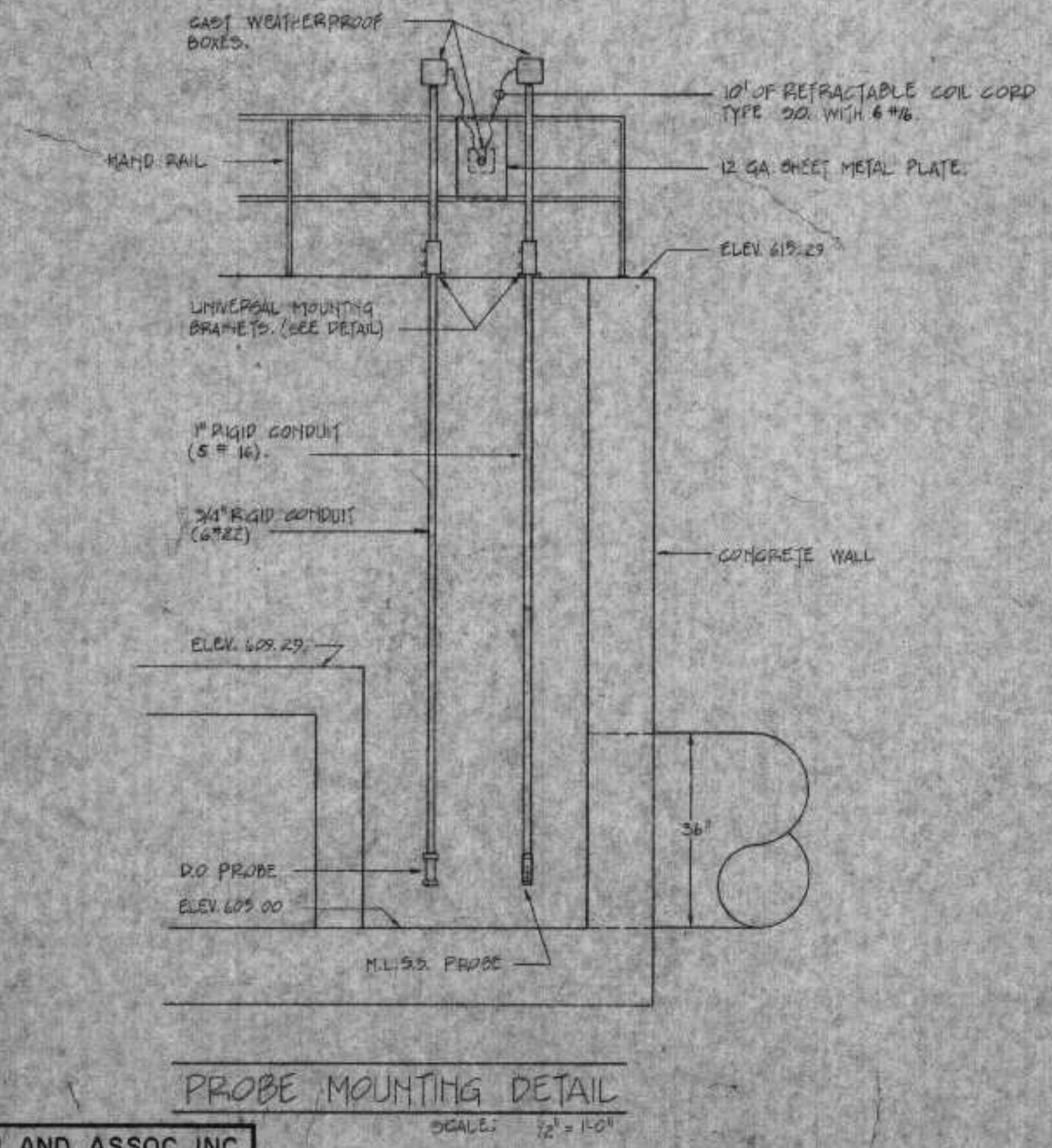
REVIEWED AND APPROVED BY THE DIV. OF ENVIRONMENTAL PROTECTION, DEPT. NATURAL RESOURCES, IN ACCORDANCE WITH SEC. 144.01, WIS. STATS. SUBJECT TO THE CONDITIONS SET FORTH IN THE LETTER OF APPROVAL.

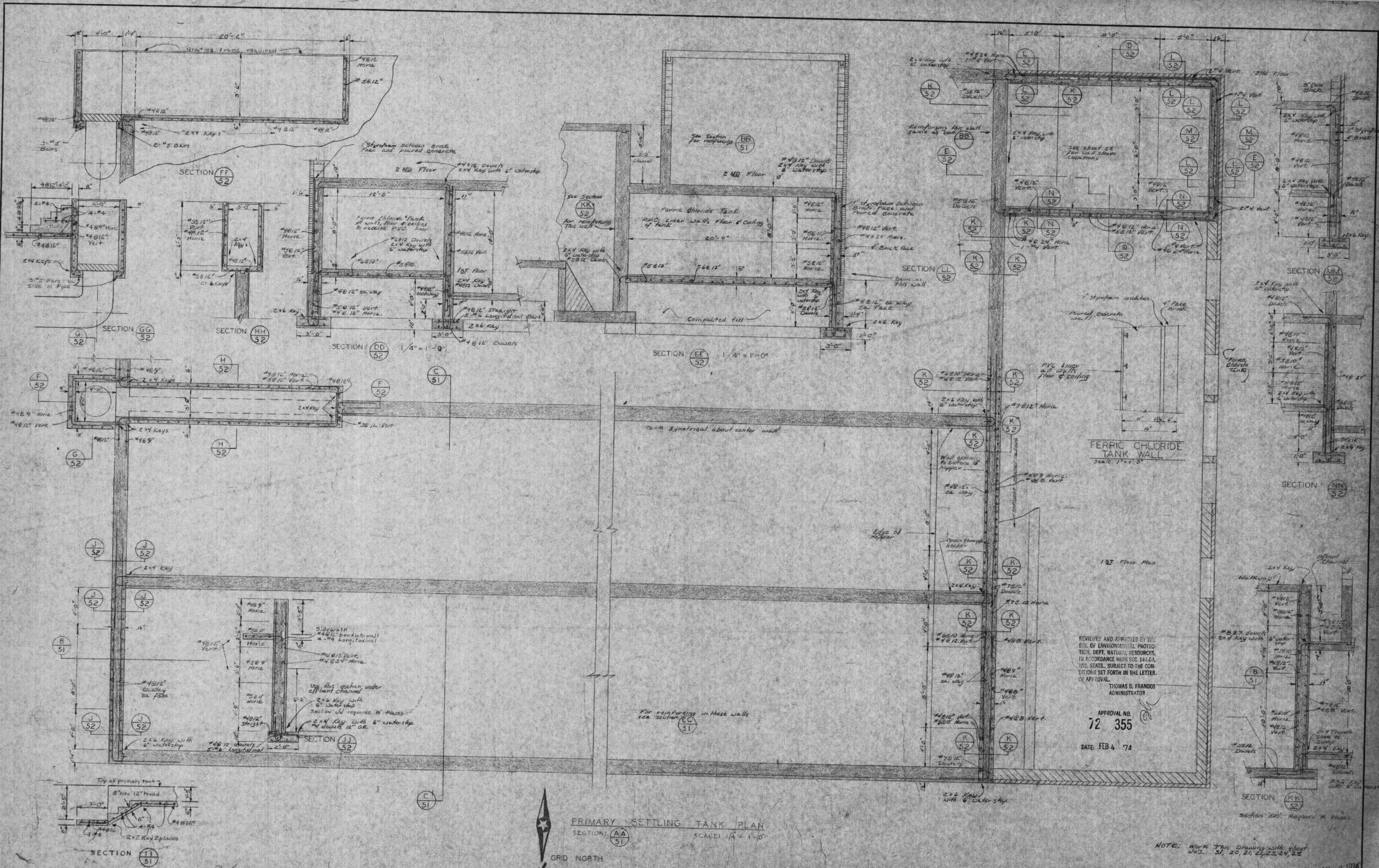
THOMAS G. TRANGOS
ADMINISTRATOR

APPROVAL NO. 72 355

DATE: FEB 4 '74

DNR JAN 3 1974





REVIEWED AND APPROVED BY THE
 DIV. OF ENVIRONMENTAL PROTECTION,
 DEPT. NATURAL RESOURCES,
 IN ACCORDANCE WITH SEC. 141.64,
 WIS. STATS. SUBJECT TO THE CON-
 DITIONS SET FORTH IN THE LETTER
 OF APPROVAL.

THOMAS G. FRANDOS
 ADMINISTRATOR

APPROVAL NO.
 72 355

DATE: FEB 4 '74

NOTE: Work This Drawing with sheet
 Nos. 51, 20, 21, 22, 23, 24, 25

DNB JAN 3 1974

NO.	DATE	BY	REVISIONS
1			
2			
3			

BONESTROO, ROSENE, ANDERLIK & ASSOC., INC.
 ST. PAUL, MINNESOTA

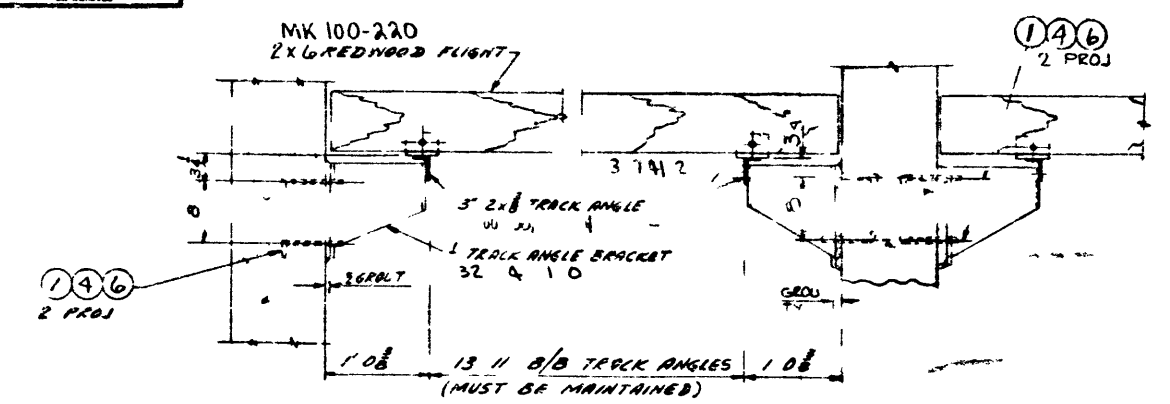
SUPERIOR, WISCONSIN
 DATE: FEBRUARY 2, 1974
 COMM. 6888A

PRIMARY SETTLING TANK
 52/94

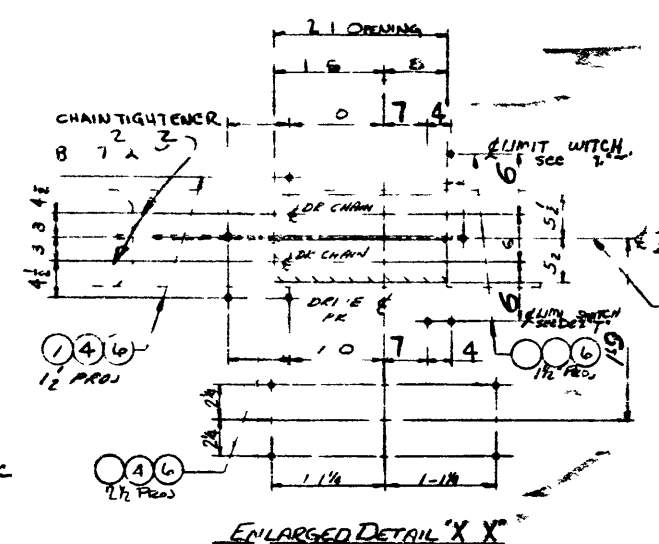
STRUCTURAL 5-9

102 L6606-H

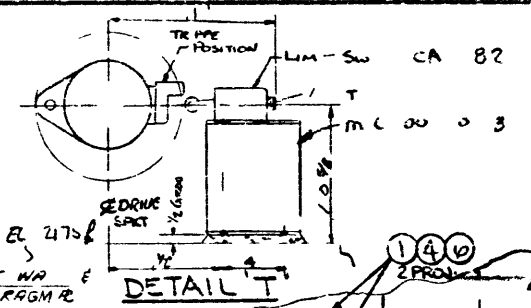
LIST OF COMPONENTS		NO. H 90447 20
GENERIC DESCRIPTION	QTY	NO. H 0447
CT CN	3,5	



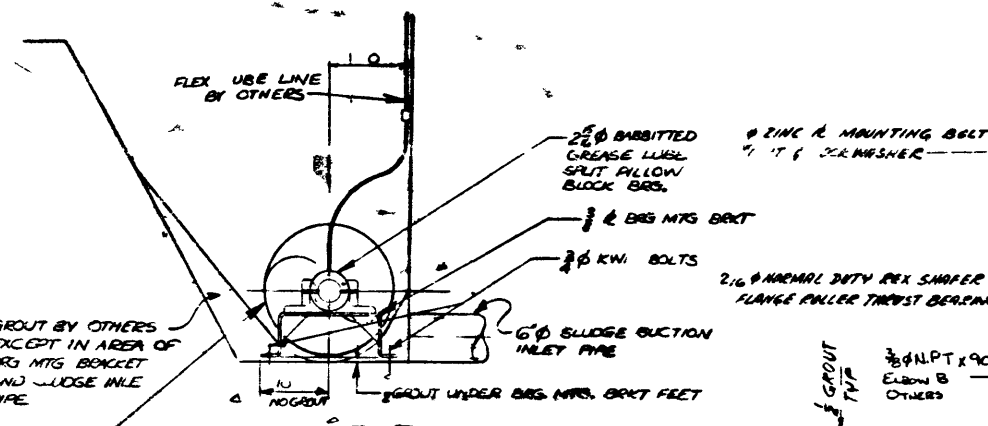
SECTION D-D
SCALE 1/8"



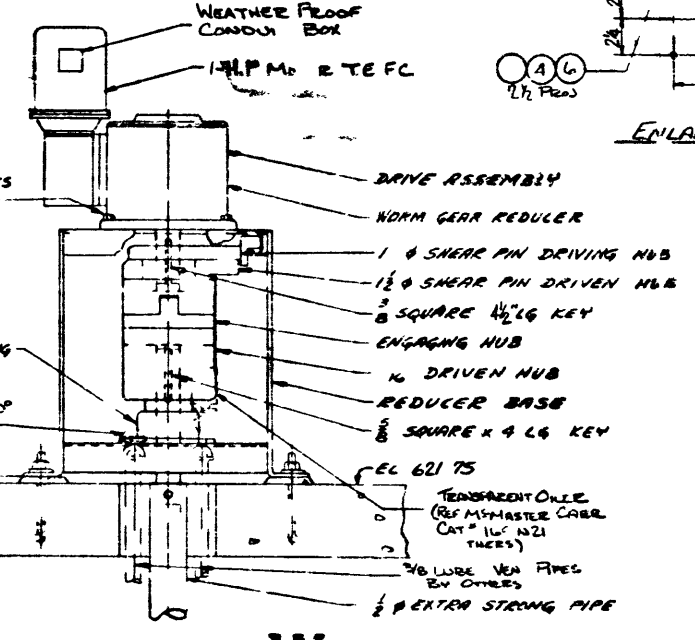
ENLARGED DETAIL X-X



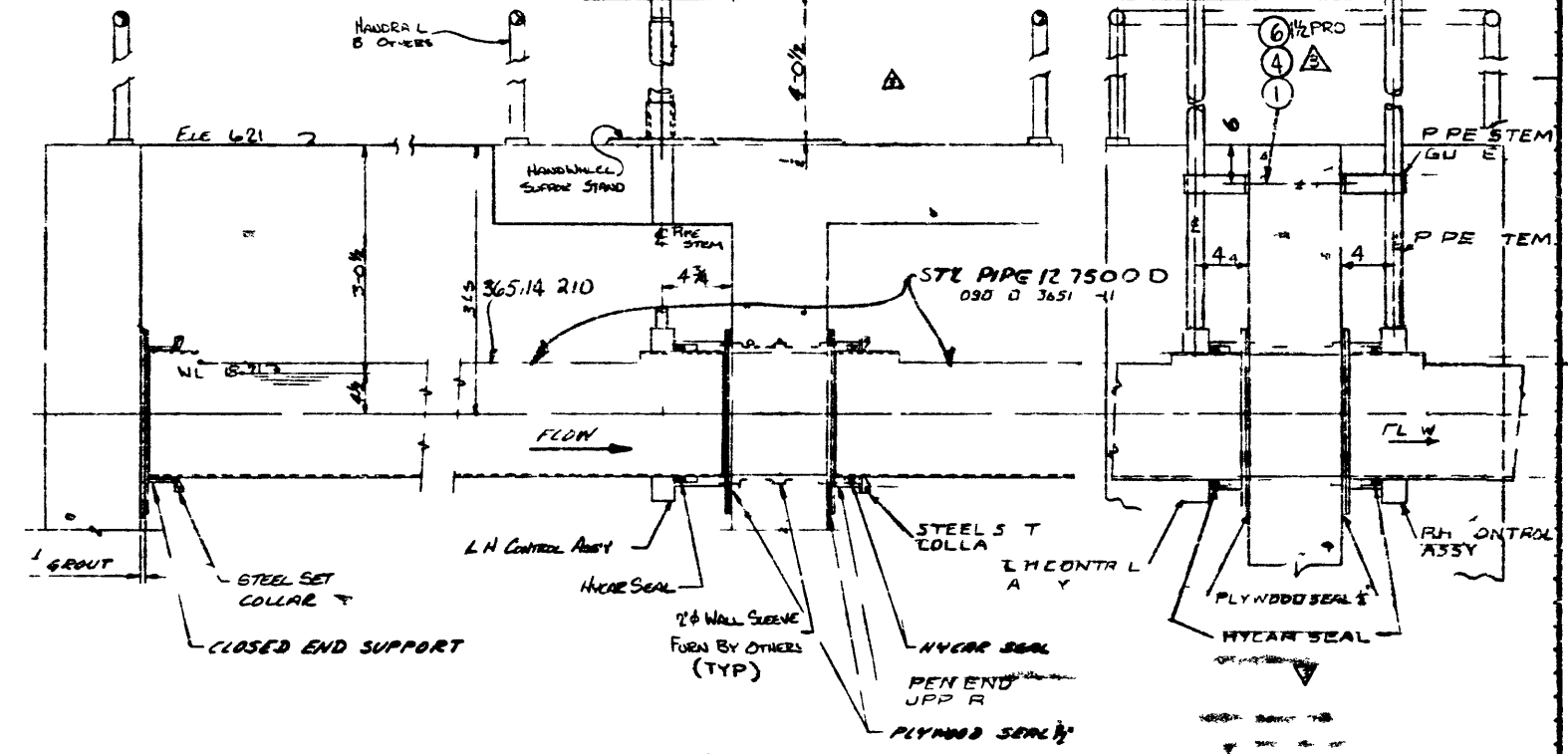
DETAIL T



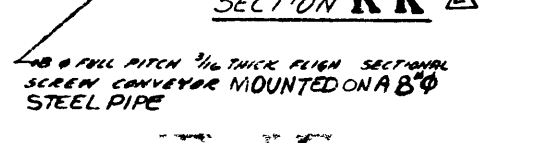
SECTION R-R



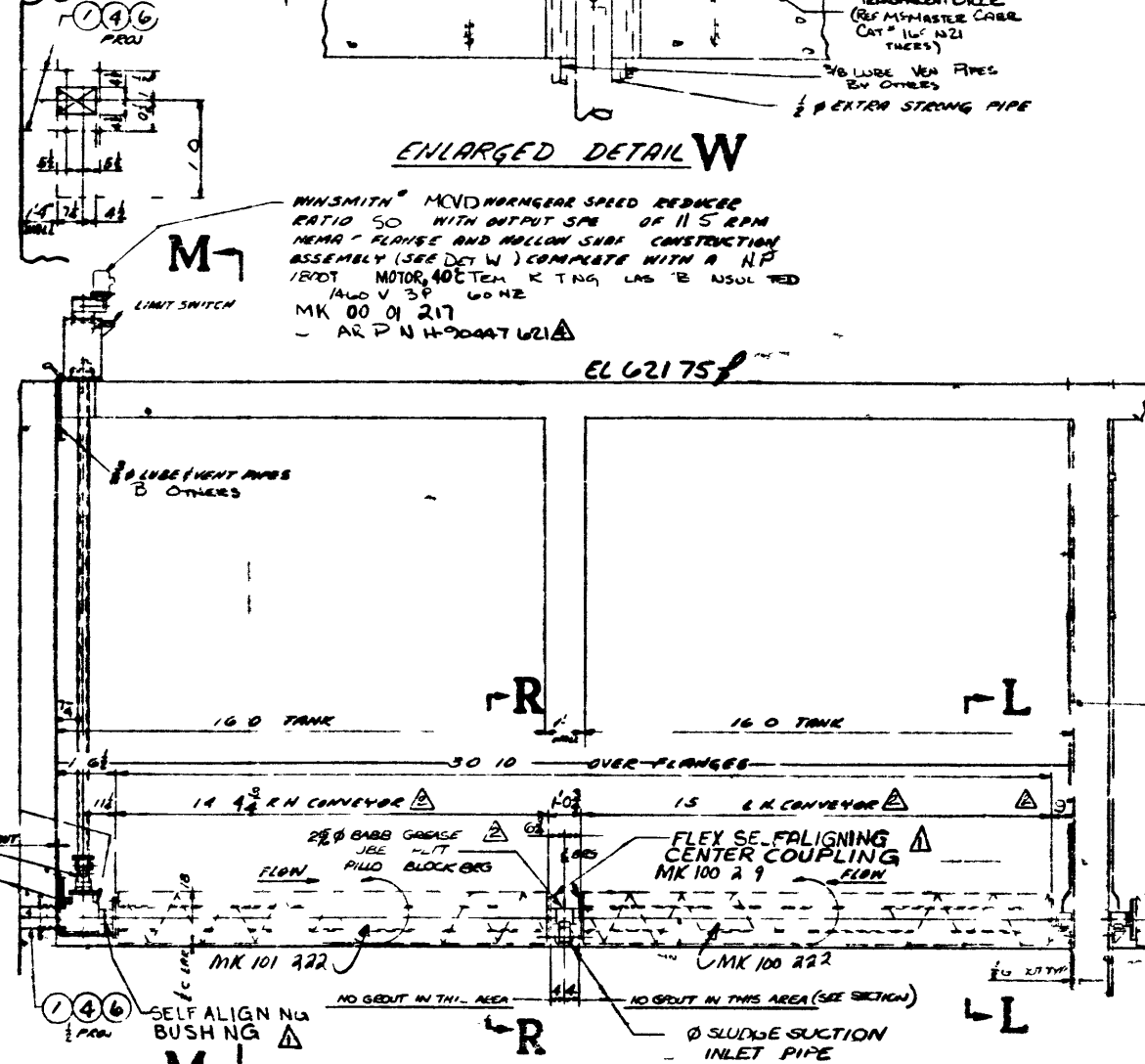
ENLARGED DETAIL W



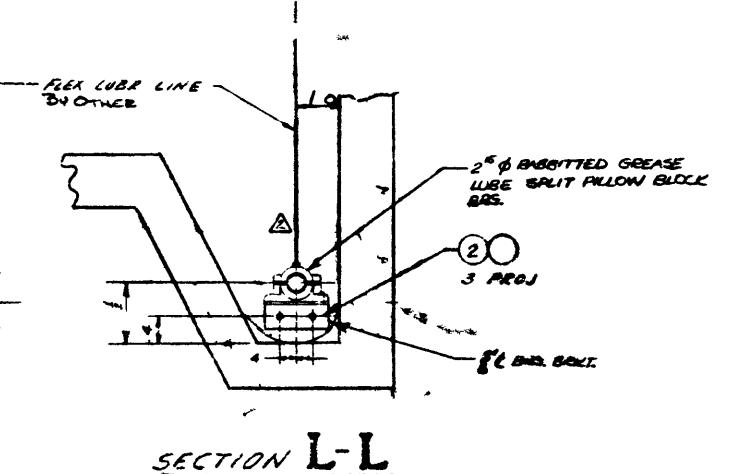
SECTION E-E



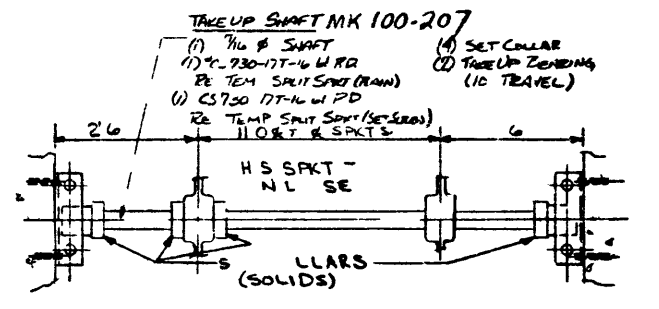
SECTION M-M



SECTION K-K



SECTION L-L



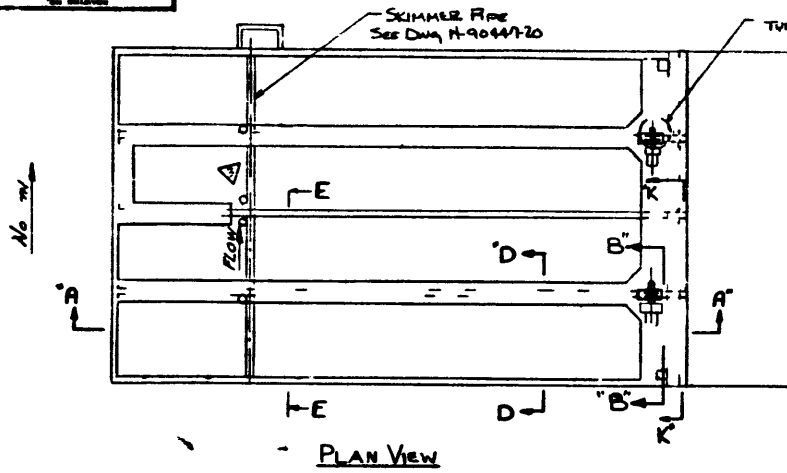
SECTION H-H

OWNER	JOHNSON PROS. HUNTSVILLE, ALA.	SCALE	AS SHOWN
DESIGNER	JOHNSON PROS. HUNTSVILLE, ALA.	DATE	11/22
PROJECT	FROM STRUD, ED LANE, ANDY BUCK, BOBSON	DRN	HEL
SPR	521	CHK	DRE
CON	ENT AL ALL SHTS ED ROBERT	APP	REY
REX CHAIN BELT NC		PROJ	REY
VIRGIL AL CONTROL		ORDER NO	H 90447
BALFISH SCURRY 53 BE		DATE	11-1-77

JAN 25 1978

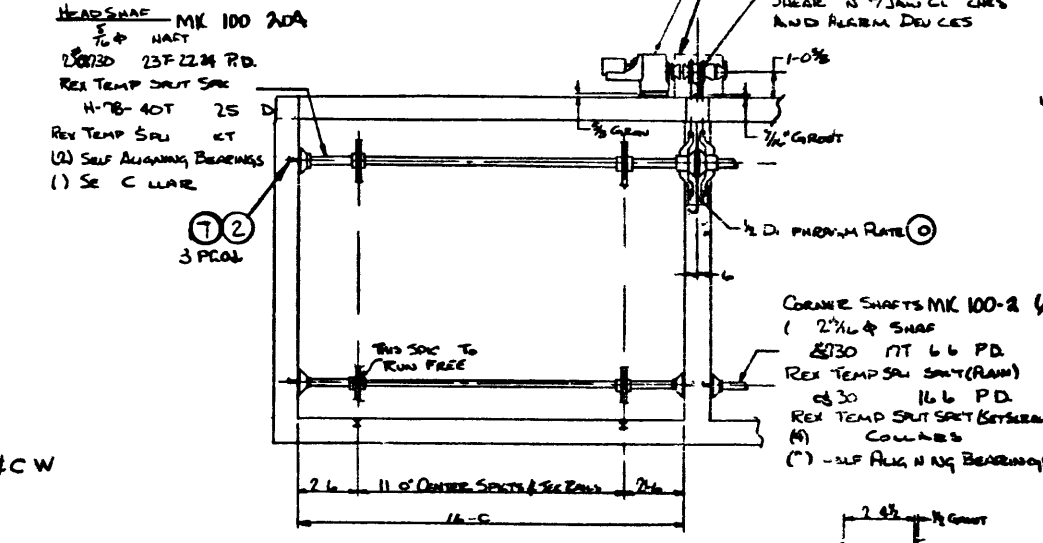
WORK THIS DWG WITH DWG N H 90447 200

CHANGED MEANS FIN	REL	9/17/74
DATE	REL	11/75
BY	REL	11/75
CHK	REL	11/75
APP	REL	11/75
CHK	REL	11/75
APP	REL	11/75

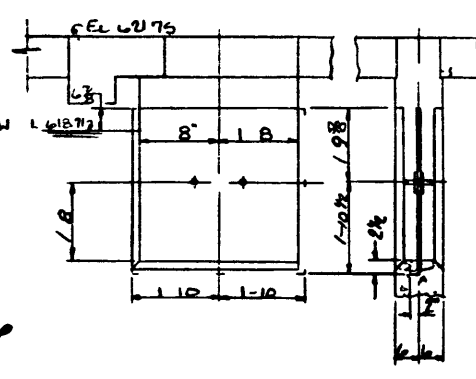


PLAN VIEW

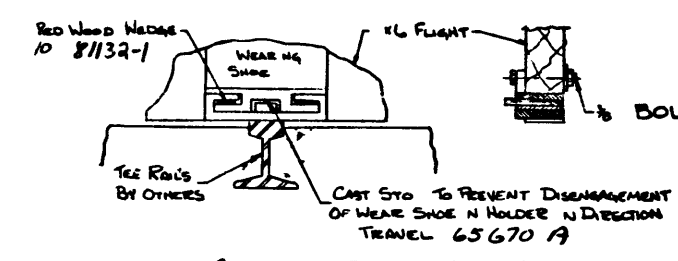
SLUDGE COLLECTOR DRIVE UNIT
 FALK COOP K2 HELI AL GEAR SPEED REDUCER
 6 RPM U/DU SPEED
 COMPLETE 1/2 H. 800 M TENV GEAR EXHA
 MOTOR CLASS B INSULATED ON 3PH 40HZ 230/460
 VOLT MK 100 213
 SH AR PIN CA 593 26



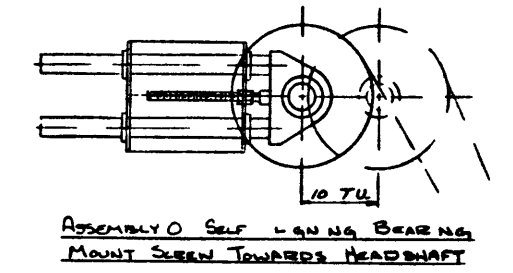
SECTION B-B



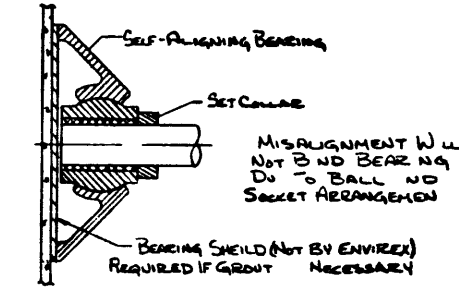
DETAIL O DIAPHRAGM P



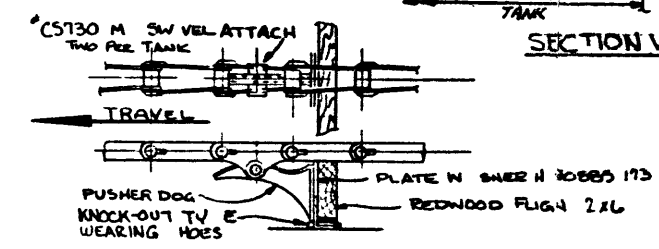
SECTIONS OF FLIGHT & WEAR SHOES



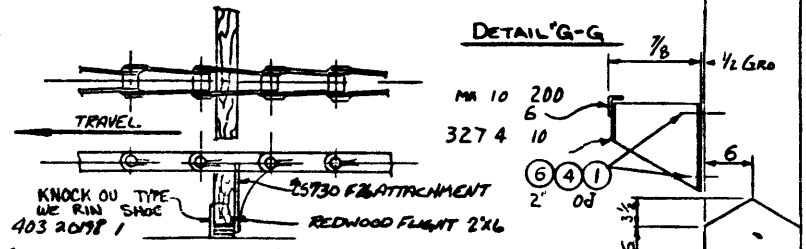
ASSEMBLY OF SELF ALIGNING BEARING



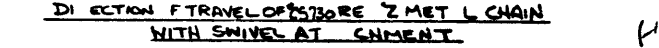
ASSEMBLY OF SELF ALIGNING BEARING



SECTION V-V



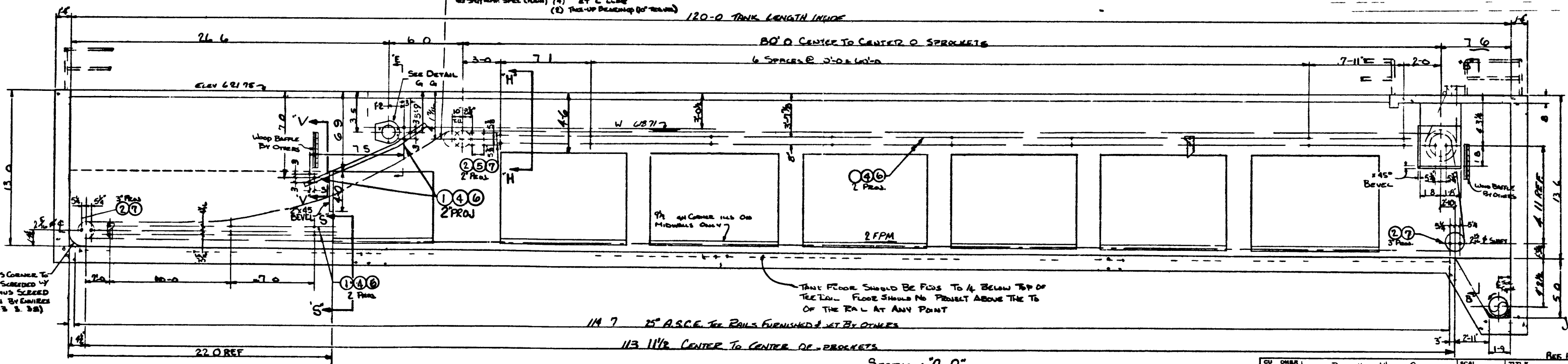
DETAIL G-G



DI SECTION F TRAVEL OF SPROCKET WITH SWIVEL AT SHMENT



DIRECTION OF TRAVEL OF SPROCKET WITH METAL CHAIN



SECTION A-A

NOTE
 WHEN TANKS ARE INITIALLY FILLED WITH WATER
 REDWOOD FLIGHTS SHOULD BE PERMITTED TO SOAK
 FOR AT LEAST THREE DAYS PRIOR TO START UP THE
 EQUIPMENT TO REDUCE THEIR BOUANCY AND TO PREVENT
 DAMAGE TO THE FLIGHT

DIRECTION OF TRAVEL OF #78 DRIVE CHAIN

EREC N YE
 CORRECTIONS OF MIN R M
 AND ASOW BLE AMOUNT
 CUTTING REPAIRING R CONSIDERED
 PART O ERECTION AN E R
 WHICH PREVENTS ASSEMBLY BY
 MODERATE USE OF DIE PINS
 CUTTING AND N LING TO
 REPORTED AND APPROU L OF
 CORE CT ON OR CHANGA TO
 BE REASONED N WEIT NG BEFORE
 PROCEEDING FAILURE - CON Y WILL
 RELIEVE EN REA OF ALL OPERATIONAL
 AND MONETARY RESPONSIB LTY

LIST OF COMPONENTS		QTY	UNIT	DESCRIPTION
24	03 5037	3/8	LN H KED RICHEN	
2	3203 7 7	1/4	#7 LN MADE D HANDED BOLT	
8	03 503	1/4	LN HOOKED ANCHOR BOLT	
240		3/8	J HER	
5	6	3/8	CU WASHER	
6	240	3/8	H NU	
7	2	3/8	H NU	
8	8	3/8	H NU	
0	2	US 60 S	D ONE AM PLATE	
4	-503	1/2	LN HOOKED ANCHOR BOLT	
3	4	1/2	H N	
4	4	1/2	C WASHER	

CUSTOMER NOTE
 REX WILL NOT FURNISH ANY ELECTRICAL CONTROLS OTHER
 THAN SPECIFIED WEING OF MOTORS OR CONTROLS, CONTROL
 PANEL OR SUPP E S PUMPS INSTRUMENTATION B FILES,
 WEI S P NG GATE H NDRAIL GREAT NG OE FLOOR
 PLATES GROUT R SEALANT LUBR ANTS F R DRIVES
 OR B ARINGS GREASE GREASE GUN FELD PAINT OR
 PAINT NG
SUPERVISION OF ERECTION AND/OR INSPECTION
 SERVICES OF OUR FACTORY REPRESENTATIVE WILL BE
 FURNISHED N ACC RDANCE WITH TERMS OF OUR
 CON RACT W H THE CUSTOMER
PAINT NOTE
 H FT NG AND EXPOSED MACHAD SURFACES - ONE COAT OF HIGH ADH
 633 CHAIN - ONE COAT SWISH L
 WOOD NONFERROUS M TERIAL AND GALVANIZED SURFACES - UNPAINTED
 DRIVE UNIT AND CONTROLS MANUFACTURERS STAND RD
 ALL STEEL #CAS NG SHALL BE CLEANED BLAST CLEANING
 PER SSPC-SP-0-63T SUBMERGED KOPPERS #54 PRIMER
 NON SUBMERGED KOPPERS PIG MER

4	PRINTING REVIEWED FOR RECORD ONLY	W/C	5/4/75
2	REVISIONS	W/C	11/25
	MA K NUMBERS ADDED	W/C	1/2/74
	IT 2000 (G) WAS PIA REQD	W/C	1/2/74

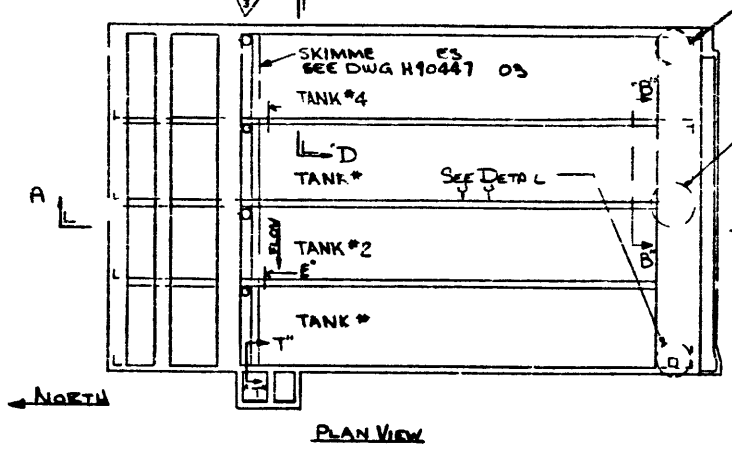
CU OWNER	JANUSO BROS. MFG. & HEAVY CONST.	SCALE	None	TITLE	GENERAL ARRANGEMENT # ANCHOR
LOCATION	SUPERIOR WISCONSIN	DATE	1/2/75	GENERAL	BOLT LOCAT N C (2) DOUBLE
DESIGNER	REXNORD INC.	APP'D	W/C	DRW	TANK TYPE "MA" SLUD
CONTRACT NO.	52/36	DATE	1/2/75	CHKD	COLLECTOR
PROPERTY	REXNORD INC.	DATE	1/2/75	APP'D	W/C
PROJECT	REXNORD INC.	DATE	1/2/75	CHKD	TO PERMANENT
ORDER NO.	11-9 447	DATE	1/2/75	APP'D	W/C
DRAWN NO.	H 704 0	DATE	1/2/75	CHKD	W/C

JAN 25 1975

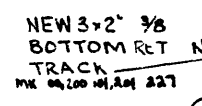
/W RE THIS DWG W N H 90447 201/

6 6306 H

SFE DETAIL Z Z

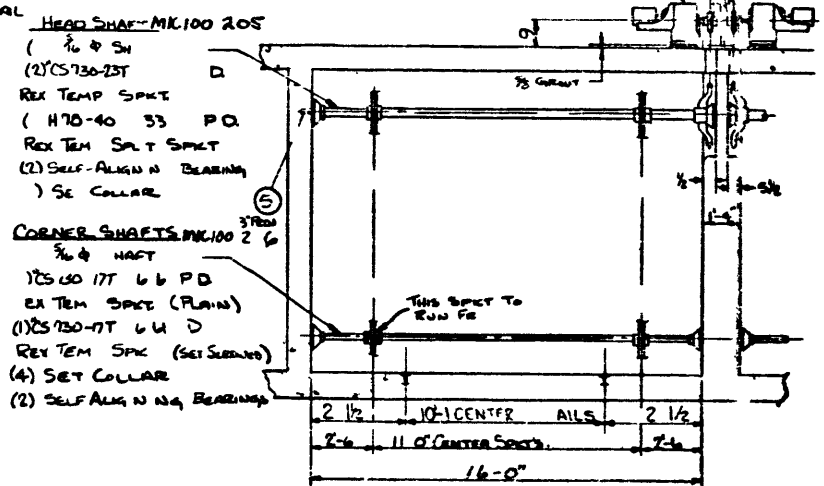


PLAN VIEW



DIRECTION OF TRAVEL OF #11A DRIVE CHAIN

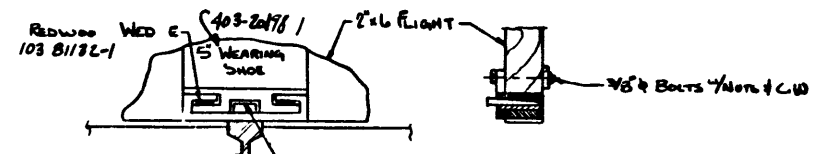
SLUDGE COLLECTOR DRIVE UNIT
 FALK CORP 3 K HULL AL GEAR BASED REDUCER
 6 M OUTPUT SHAFT
 COMPLETE 1/4 H @ 800 R M TENN GE DR EQUAL
 MO R CL 55 B M ULATION 3 PH 60 H 30/
 400 VOLT MK J
 SHEAR PIN CA1943-26



SECTION B-B TANK #3

HEAD SHAFT-MK 100 205
 (1) 3/4 @ SH
 (2) CS130-23T
 REY TEMP SPT
 (H70-40 33 PD
 REY TEM SPT SPT
 (2) SELF-ALIGNING BEARING
) SET COLLAR

CORNER SHAFTS-MK 100 205
 3/4 @ SH
 (1) CS100 17T 6 6 PD
 REY TEM SPT (PLAIN)
 (1) CS130-17T 6 6 D
 REY TEM SPT (SET SCREW)
 (4) SET COLLAR
 (2) SELF-ALIGNING BEARING



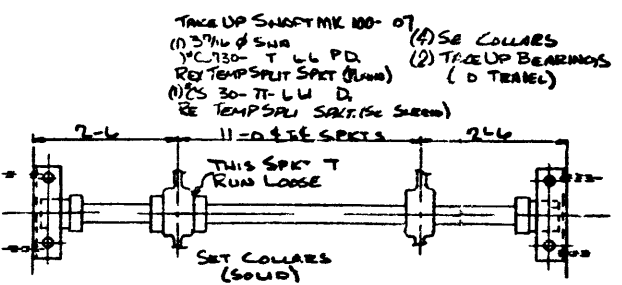
SECTION OF FLIGHTS & WEAR SHOES

LIST OF COMPONENTS		H-90447 202	
GENERAL ARRANGEMENT 485A		H 90447	
QTY	PART NUMBER	MATERIAL	BY OTHERS
2	B4 680	3/8 X 1/4 L6 KW K BOLT	ZNR
2	680	1/8 CU WASHW	ZNR
3	84	1/4 L6 KW K B LT	ZNR
4	2	3/8 CUT W W R	ZNR
5	6	6 L6 KW K B LT	ZNR
6			
7			
8			
9			

ERECTOR NOTE
 CORRECTIONS OF MINOR MISFITS AND REASONABLE AMOUNT CUTTING AND BEAMING RE CONSIDERED A PART OF ERECTOR'S DUTY WHICH PREVENTS ASSEMBLY BY MOD RATE USE OF DRIFT PINS CUTTING AND WELDING IS TO BE REJECTED AND APPROVAL OF CORRECTION OR CHANGE IS TO BE RECEIVED IN WRITING BEFORE PROCEEDING FAILURE TO COMPLY WILL BE RESPONSIBILITY OF ALL OPERATIONAL AND MONETARY RESPONSIBILITY

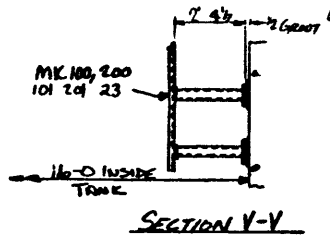
CUSTOMER NOTE
 RE WILL NOT FURNISH ANY ELECTRICAL CONTROLS OTHER THAN SPECIFIED WIRING OF MOTOR OR CONTROLS CONTROL PANEL OR SUPPLY PUMP INSTRUMENTATION BATTERIES WEIR PIPING TO HANDRAIL GRATING OR FLOOR PLATES GRATING SEALANT LUBRICANTS FOR DRIVES OR BEARINGS GREASE GREASE GUN FELD PAN OR PAINTING
 SUPERVISION OF ERECTION AND INSPECTION SERVICES OF FACTORY REPRESENTATIVE WILL BE FURNISHED IN ACCORDANCE WITH TERMS OF OUR CONTRACT WITH THE CUSTOMER
 NOTE
 WHEN TANKS ARE INITIALLY FILLED WITH WATER, REDWOOD FLIGHT SHOULD BE PERMITTED TO SOAK FOR AT LEAST THREE DAYS PRIOR TO OPERATING THE EQUIPMENT TO REDUCE THE BOUANCY AND TO PREVENT DAMAGE TO THE FLIGHTS

PAINT NOTE
 SHIFTS AND EXPOSED MACHINE SURFACES ONE COAT OF MOHAR PRIMA L33 CHAIN ONE COAT OF SLUSH ON WOOD NONFERROUS MATERIALS AND GALVANIZED SURFACES UNPAINTED DRIVE UNITS AND CONTROLS MANUFACTURE STANDARD ALL STEEL & CASTING SHALL BE CLEANED BY BLAST CLEANING PER SSPC SP10 W3T SUBMERGED KOPPER #654 PRIMER NON SUBMERGED KOPPER PUG PRIMER

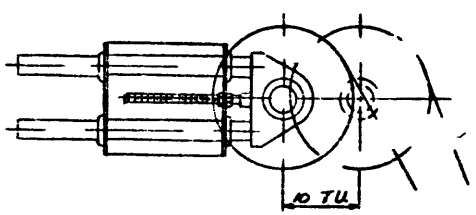


SECTION H-H

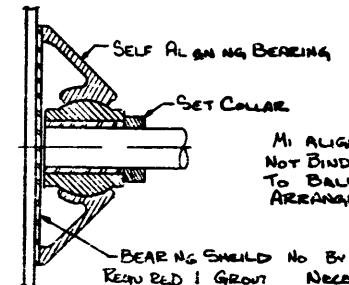
TAKE UP SHAFT MK 100 07
 (1) 3/4 @ SH
 (1) CS130-17T 6 6 PD
 REY TEMP SPT (PLAIN)
 (1) CS130-17T 6 6 D
 REY TEMP SPT (SET SCREW)



SECTION V-V



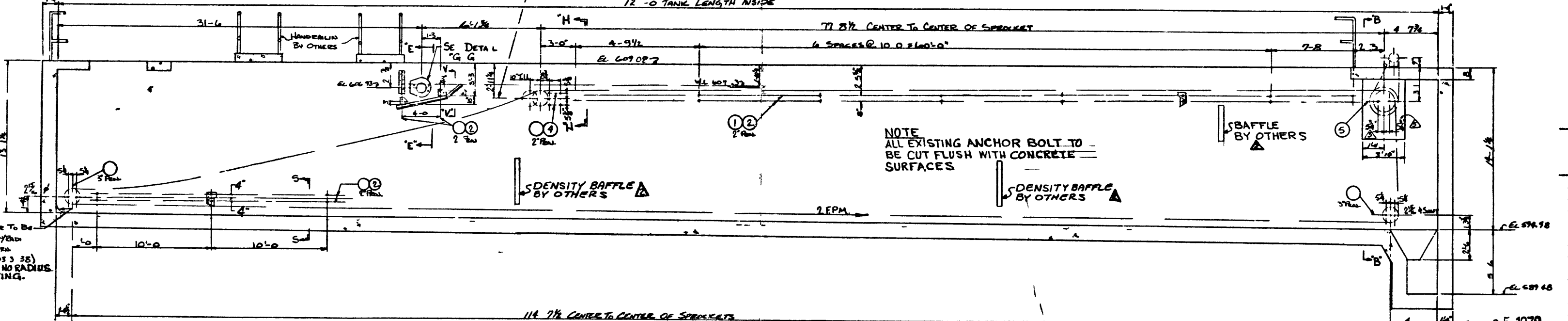
ASSEMBLY OF SELF-ALIGNING BEARING MOUNT SCREW TOWARDS HEADSHAFT



ASSEMBLY OF SELF-ALIGNING BEARING
 NOTE: NO GROUT OR SHIMS REQUIRED BETWEEN BEARING DISTANCE BETWEEN WALLS SHALL BE 1/2"

MI ALIGNMENT WILL NOT BE REQUIRED DUE TO BALL AND SOCKET ARRANGEMENT

12'-0" TANK LENGTH INSIDE



SECTION A-A THRU TANK #2

NOTE
 ALL EXISTING ANCHOR BOLT TO BE CUT FLUSH WITH CONCRETE SURFACES

DENSITY BAFFLE BY OTHERS

DENSITY BAFFLE BY OTHERS

THIS CORNER TO BE SCREED 1/8" SAVED FOR FINISH (503 3 35) ONLY IF NO RADII EXISTING.

REV	NO	DESCRIPTION	DATE
5		NON U.S.	7/2/78
4		PAINTING REVISED FOR RECORD ONLY	3/2/78
3		CHANGES TO BE MARKED WITH MARKER	4/15/78
2		CHANGES TO BE MARKED WITH MARKER	4/15/78
1		CHANGES TO BE MARKED WITH MARKER	4/15/78

CU TOWER JOHNSON BROS. HWY. & HEAVY CONST. LOCATION SUPERIOR, WISCONSIN 53081
 SHEET SPEC. ROSENBERG, ROSENBERG, ANDERLIK #13300
 CONFIDENTIAL ALL RIGHTS RESERVED PROPERTY OF REXNORD ENVIREX INC.
 SCALE: AS SHOWN
 DATE: 12/02/78
 DRAWN BY: MRL
 CHECKED BY: E
 ORDER NO: H 90447
 DRAWING NO: H-90447-202

WORK WITH DWG H 90447-203/

25 1978