



Inspection report

Date: 7/23/2021	Work Order:	Weather: Dry	Surveyed By: Steven Bucklin	Certificate Number: U-0819-70306510	Pipe Segment Ref.: CB01001B-CB01001C
Year laid:	Pre-cleaning: Light Cleaning	Direction: Upstream	Pipe Joint Length:	Total Length: 38.4'	Length Surveyed: 38.4'

City: City of Superior	Drainage Area:	Upstream MH: CB01001C
Street: TOWER AVE	Media Label: 1080	Up Rim to Invert: 0.0
Location Code: Railway	Flow Control: Not Controlled	Downstream MH: CB01001B
Location Details: IN BETWEEN 2 SETS OF TRACK	Sheet Number:	Down Rim to Invert: 0.0
Pipe shape: Circular	Sewer Use: Stormwater Pipe	Total gallons used: 0.0
Pipe size: 15"	Sewer Category: SEC	Joints passed: 0
Pipe material: Reinforced Concrete Pipe	Purpose: Routine Assessment	Joints failed: 0
Lining Method: None	Owner: City of Superior (ESD)	

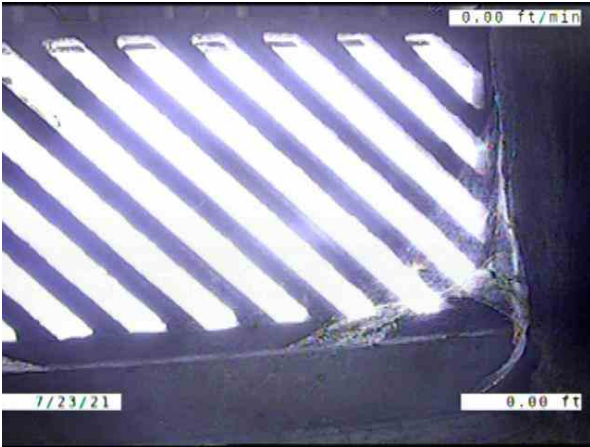
Additional Info:

1:290	Distance	Code	Observation	Counter	Photo	Grade		
CB01001B								
	0.0	ACB	Catch Basin / CB01001B	00:00:01	CB01001B -CB01001 C_71a754			
	0.0	MWL	Water Level, 5% of the vertical dimension	00:01:25	CB01001B -CB01001 C_6b1259			
	1.4	S01	Crack Multiple from 12 o'clock to 12 o'clock, within 8 inch, Start	00:02:30	CB01001B -CB01001 C_1e2fb72			
	5.0	F01	Crack Multiple from 12 o'clock to 12 o'clock, within 8 inch, Finish	00:03:03	CB01001B -CB01001 C_35ad9f5	S3		
	19.5	B	Broken from 12 o'clock to 11 o'clock, within 8 inch	00:04:59	CB01001B -CB01001 C_b21691	S4		
	35.7	CM	Crack Multiple from 10 o'clock to 5 o'clock, within 8 inch	00:06:50	CB01001B -CB01001 C_aa0a49	S3		
	38.4	ACB	Catch Basin / CB01001C	00:08:43	CB01001B -CB01001 C_f4f1e9b			
CB01001C								
QSR	QMR	QOR	SPR	MPR	OPR	SPRI	MPRI	OPRI
4132	0000	4132	10.0	0.0	10.0	3.3	0.0	3.3



Section Pictures - 7/23/2021 - CB01001B-CB01001C

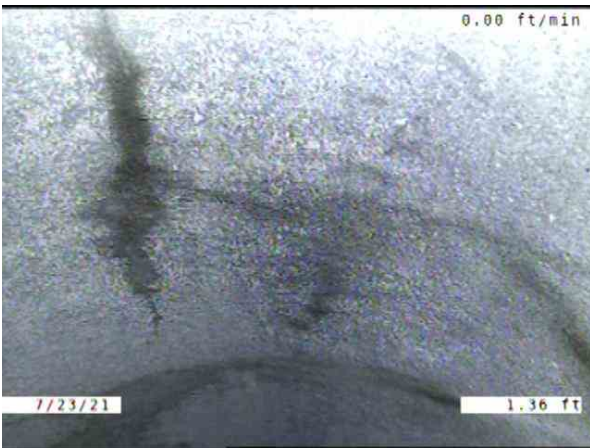
City	Street	Date	Pipe Segment Reference	Section No.
City of Superior	TOWER AVE	7/23/2021	CB01001B-CB01001C	143



CB01001B-CB01001C_71a754d9-a457-4b2e-9fd0-6f83ff3f17b8_20210723_163605_371.jpg, 00:00:01, 0.00ft
Catch Basin / CB01001B



CB01001B-CB01001C_6b125917-7479-4761-9334-b49d9704cc46_20210723_163731_066.jpg, 00:01:25, 0.00ft
Water Level, 5% of the vertical dimension



CB01001B-CB01001C_1e2fb72f-201c-42d5-9126-ac1d85421c4f_20210723_163842_684.jpg, 00:02:30, 1.36ft
Crack Multiple from 12 o'clock to 12 o'clock, within 8 inch, Start



CB01001B-CB01001C_35ad9f59-5627-4e7c-ba6f-15be1e1ee5c9_20210723_163920_925.jpg, 00:03:03, 5.00ft
Crack Multiple from 12 o'clock to 12 o'clock, within 8 inch, Finish



Section Pictures - 7/23/2021 - CB01001B-CB01001C

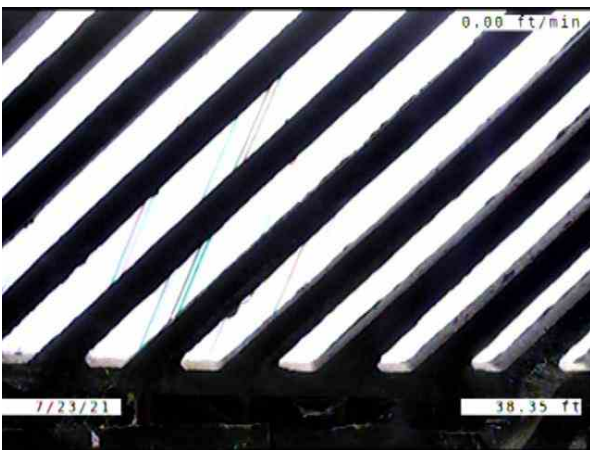
City	Street	Date	Pipe Segment Reference	Section No.
City of Superior	TOWER AVE	7/23/2021	CB01001B-CB01001C	143



CB01001B-CB01001C_b21691ef-f58d-4c4a-8127-8b3cb49a4048_20210723_164124_797.jpg, 00:04:59, 19.49ft
Broken from 12 o'clock to 11 o'clock, within 8 inch



CB01001B-CB01001C_aa0a4938-e6d5-4f09-bb8d-a2ffdb32948e_20210723_164324_298.jpg, 00:06:50, 35.74ft
Crack Multiple from 10 o'clock to 5 o'clock, within 8 inch



CB01001B-CB01001C_f4f1e9ba-f4af-4f23-ae0d-03f7c61c60db_20210723_164614_781.jpg, 00:08:43, 38.35ft
Catch Basin / CB01001C