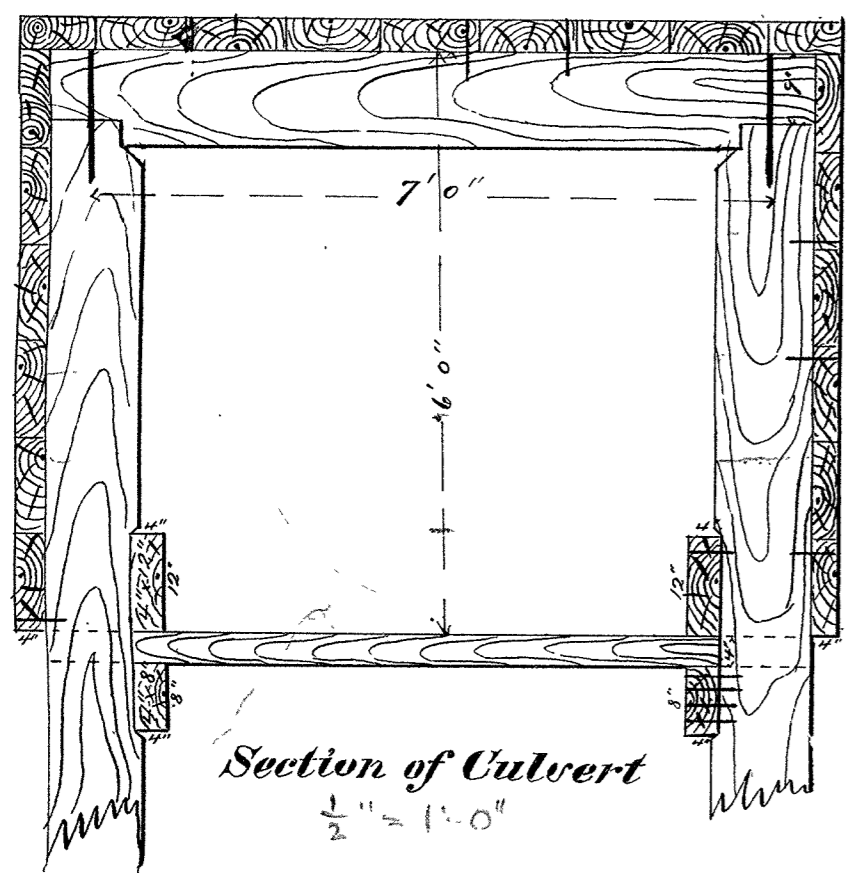
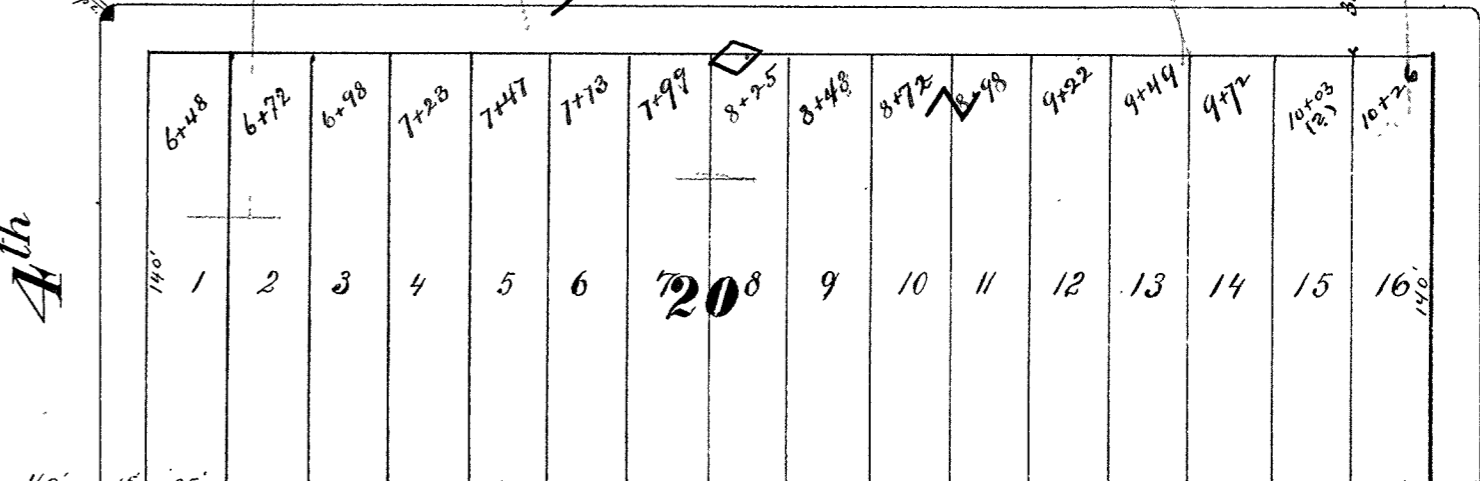
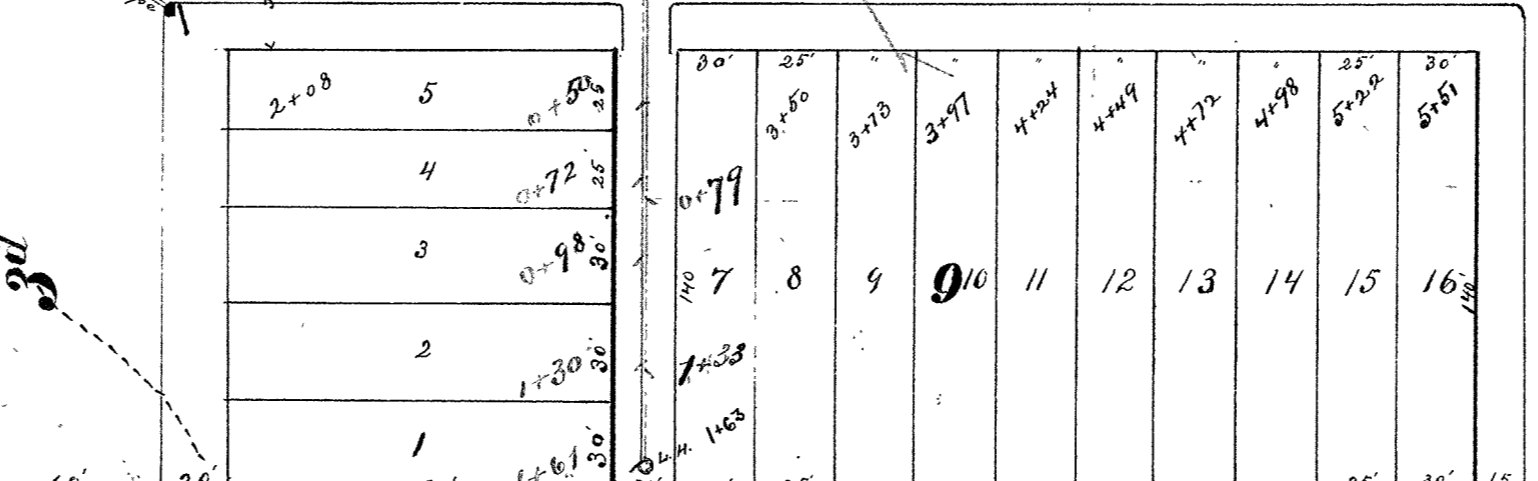
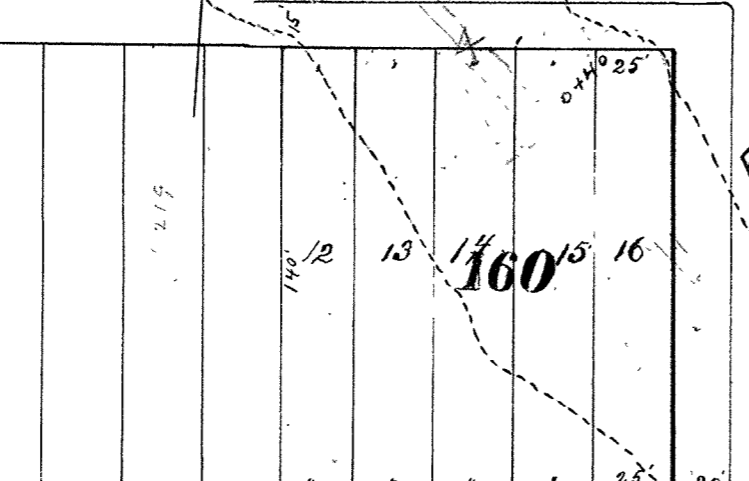
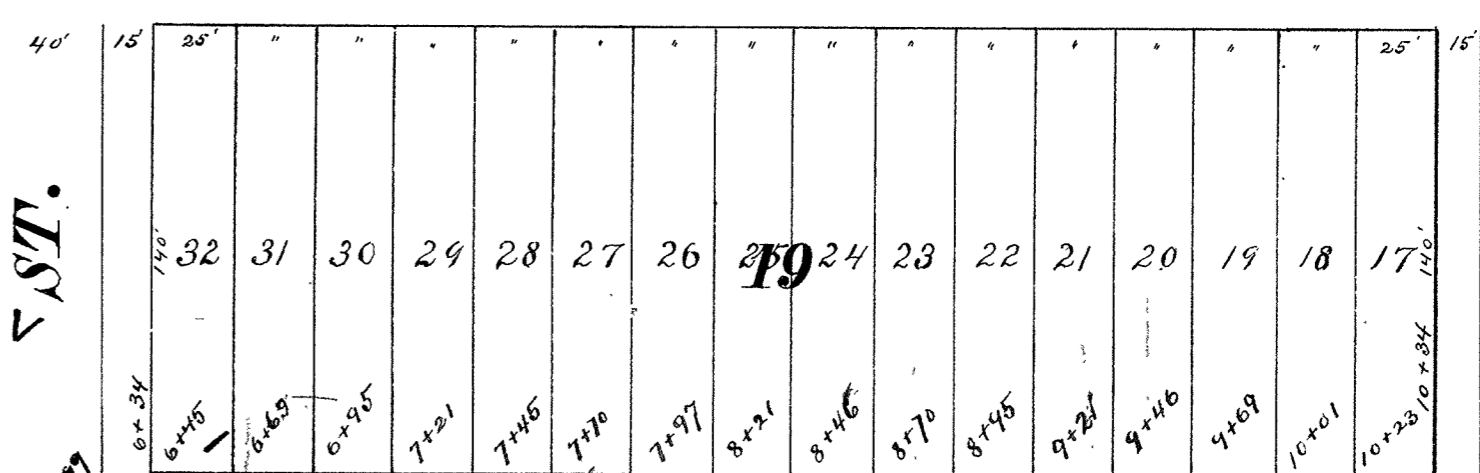
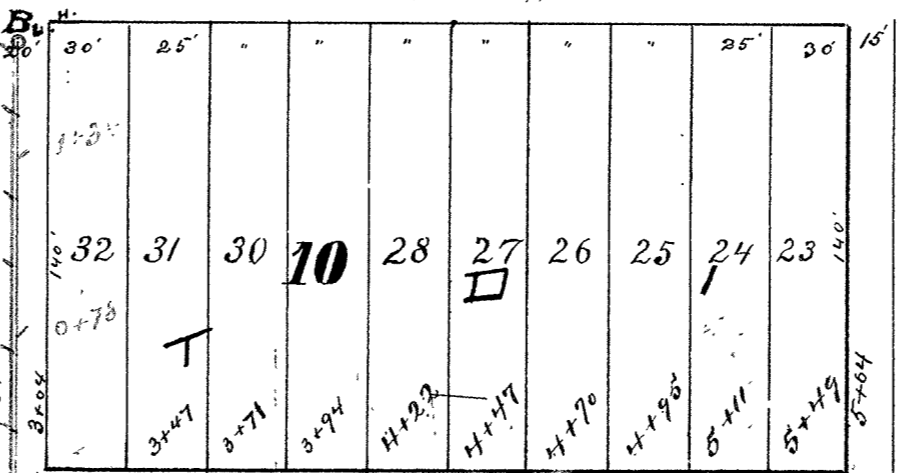
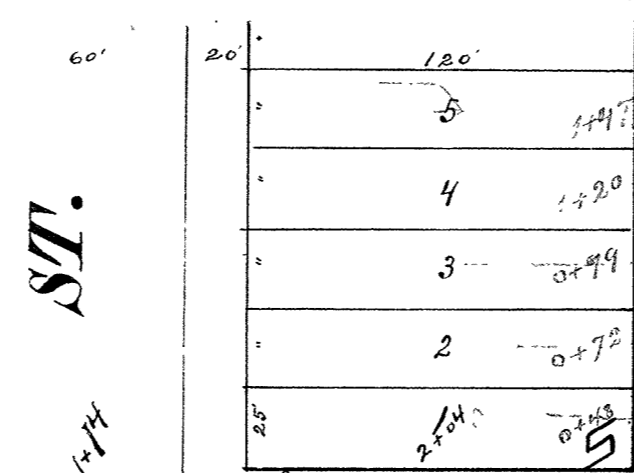
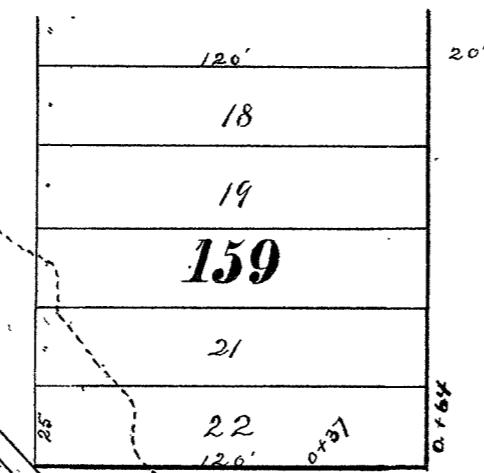
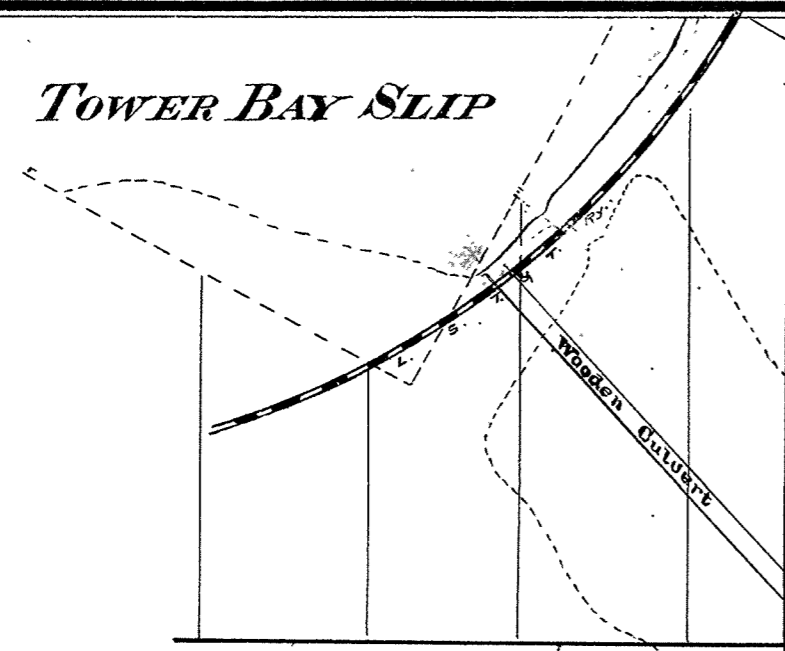


TOWER BAY SLIP



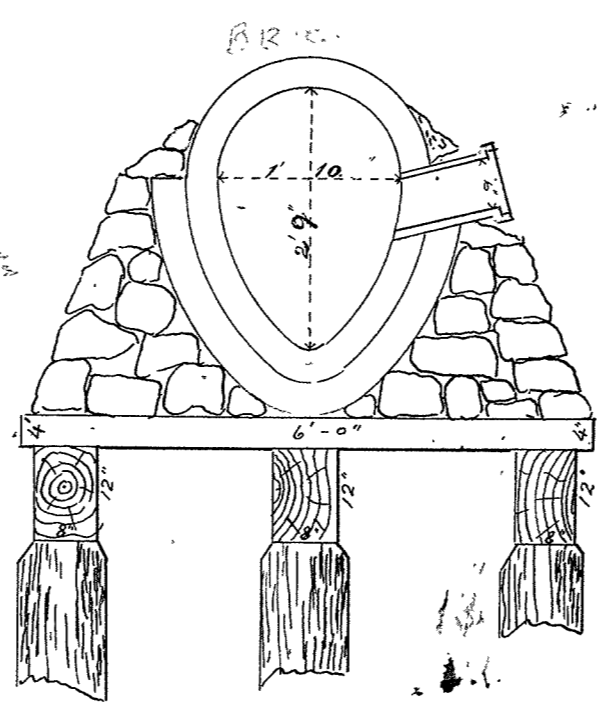
Section of Culvert
1/2" = 1'-0"



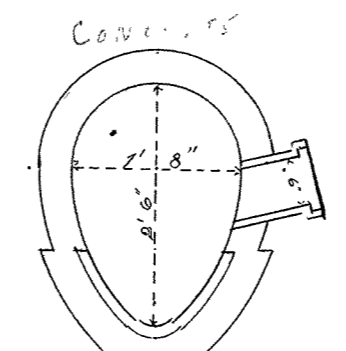
Section of 10" Pipe

**CITY OF SUPERIOR
SEWER PLAN**

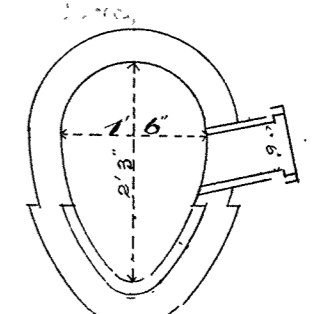
Contract let Apr. 2, 1890
J. Gleason & Sons, Contractor
Frank Russell, Inspector
Contract completed Sept. 10, 1890
E. B. Banks, City Engineer



Section of 10' x 2'9" Sewer on Piles

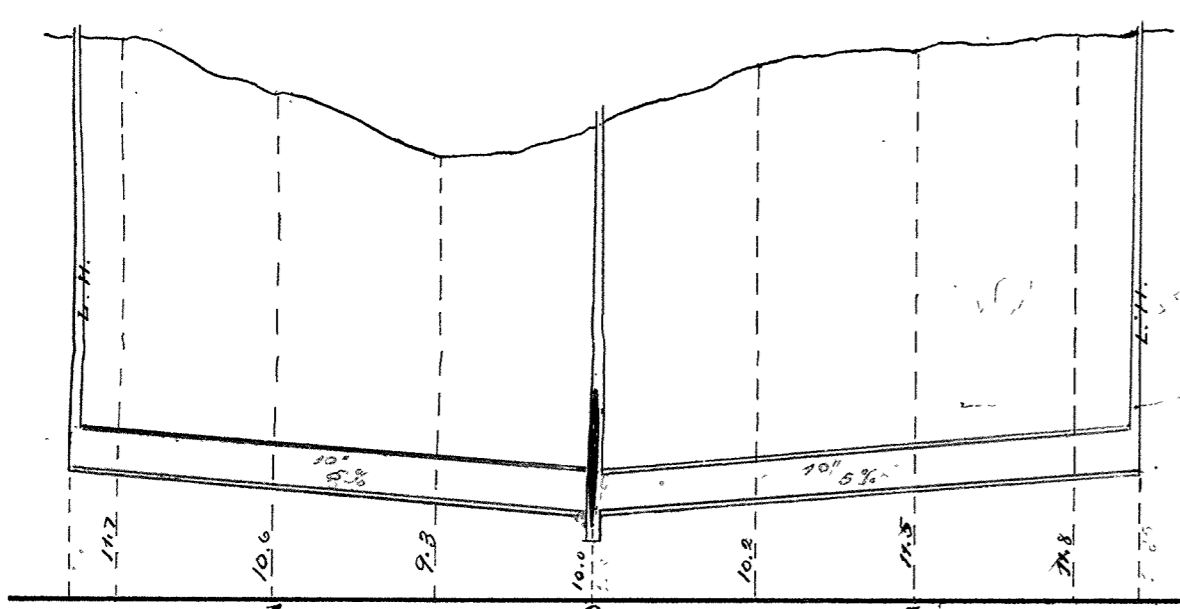


Section of 18' x 2'0" Sewer

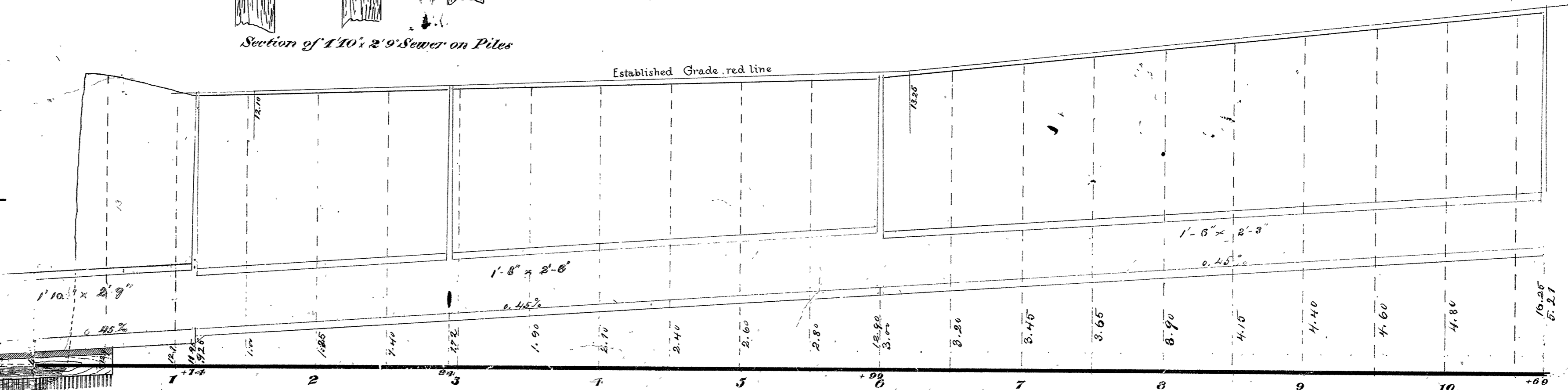


Section of 10' x 2'3" Sewer

Scale { Horizontal 1 inch = 60 ft.
Vertical 1" = 4"
Sectional 1" = 2"



Profile of Section of Sewer from A to B



Plan & Profile of Sewer in Banks Ave. from Outlet to 5th St.