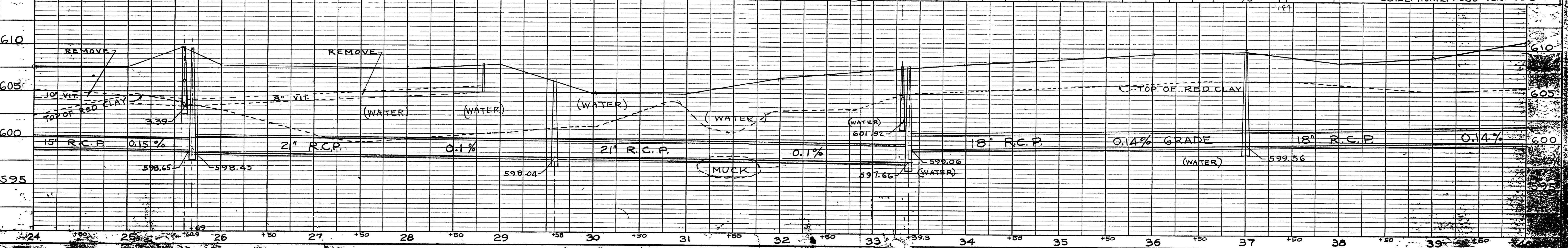
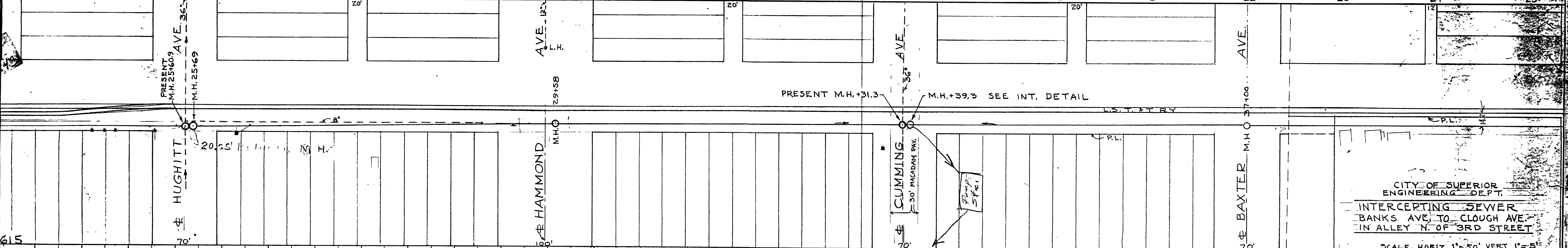
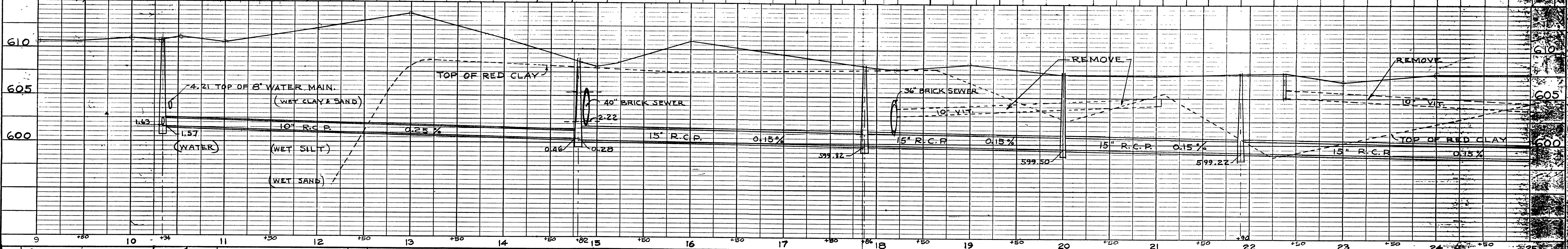
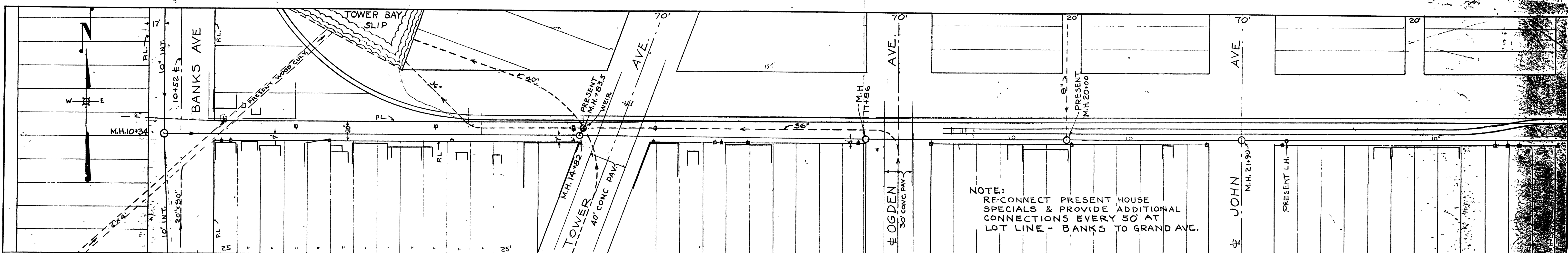


PLAN  
 NOTE BOOK  
 ALIGNMENT CHECKED  
 RT OF WAY CHECKED  
 NO.

PROFILE  
 SURVEYED  
 PLOTTED  
 GRADES CHECKED  
 STRUCTURE NOTED IN CHECK  
 NO.



CITY OF SUPERIOR  
 ENGINEERING DEPT.  
 INTERCEPTING SEWER  
 BANKS AVE TO CLOUGH AVE  
 IN ALLEY N. OF 3RD STREET  
 SCALE: HORIZ. 1"=50' VERT. 1"=5'