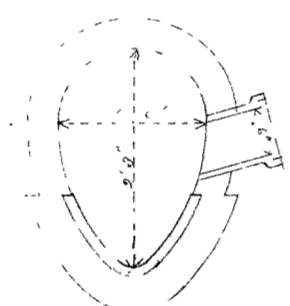


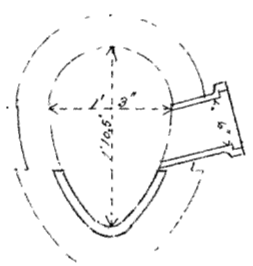
**CITY OF SUPERIOR
SEWER PLAN**

Contract let June 13, 1890
completed Aug. 11, 1891
D. C. Sullivan, Contractor
I. C. Grant, F. A. Grace, M. Conroy, W. R.
Russell, A. G. Earnshaw, Inspectors.
E. B. Banks, City Engineer

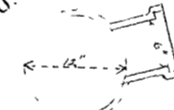
Scale { Horizontal 1 inch = 40 ft.
Vertical 1 " = 4 "
Sectional 1 " = 2 "



Section of 16"x23" Sewer



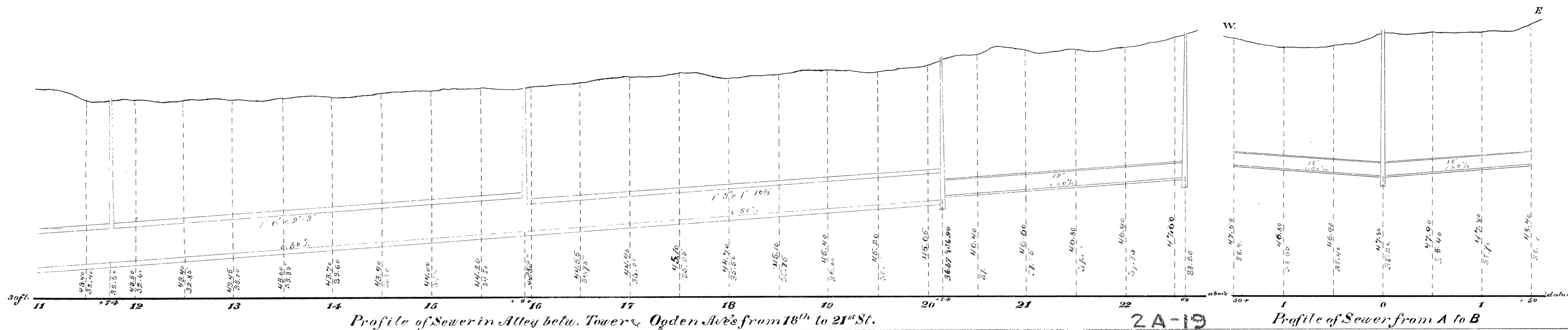
Section of 13"x11" Sewer



Section of 12" Pipe



Section of 10" Pipe



Profile of Sewer in Alley betw. Tower & Ogdren Aves from 18th to 21st St.

Profile of Sewer from A to B