

1901
CITY OF SUPERIOR
SEWER PLAN
CONTRACT LET AUG. 5TH 1901
COMPLETED NOV. 5TH 1901
CONT # 647
G. SKAMSER
CONTR.
FRANK RICHARDSON INSPECTOR
E. B. BANKS CITY ENGR

E. & W. SEWER IN BLOCK 300.

STATION	SURFACE ELEVA.	SEWER GRADE	RATE	SIZE OF PIPE	REMARKS.
0+00	37.8	25.08	0.8%	8-in.	M.H. Cen. Weeks & 63' nor. of Cen. Line of Alley.
+50	36.2	25.48	"	"	Running West on Center Line of Alley.
1+00	36.3	25.88	"	"	
+50	36.2	26.28	"	"	
+71.5	36.5	26.45	"	"	L.H. Cen. of Alley and End of Sewer.

Contract No 1165. Contract Let, May 24, 1909, Completed July 17, 1909.
Johnson & Johnson, Contractors. A. Solin, Inspector. E. B. Banks, City Engr

N. & S. SEWER IN BLOCK 3

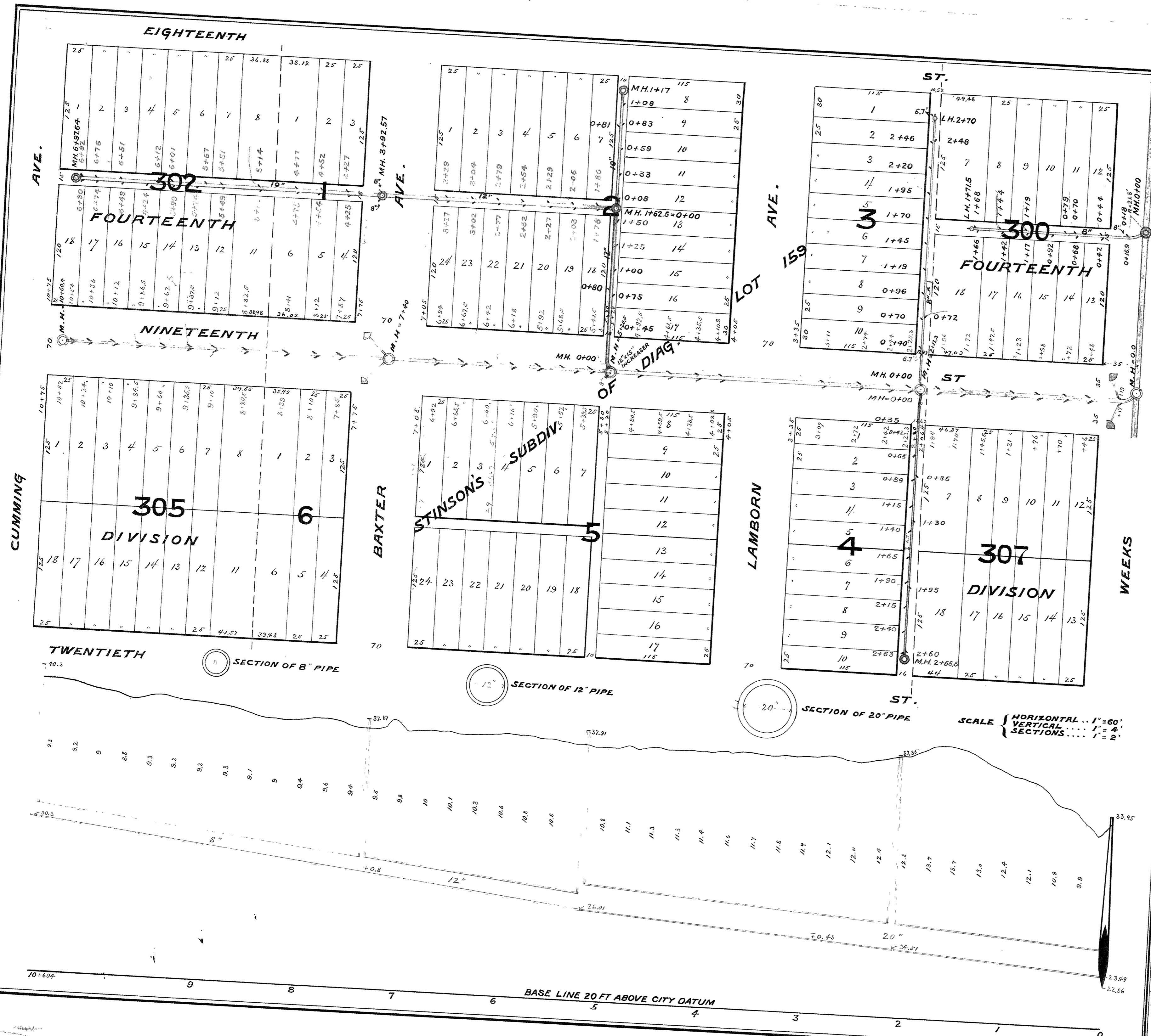
STA.	SURFACE ELEVA.	SEWER GRADE	RATE	SIZE OF PIPE	REMARKS.
0+00	37.3	24.59	0.6%	8-in.	M.H. Cen. 19th St. & 6.7 east of west line of Alley.
0+50	36.7	24.89	"	"	Running north, parallel with west line of Alley.
1+00	36.4	25.19	"	"	
1+50	36.8	25.49	"	"	
2+00	37.0	25.79	"	"	
2+50	35.9	26.09	"	"	
2+70	35.8	26.21	"	"	L.H. and north end of Sewer.

Contract No 1165.

SEWER IN BLOCKS 302, 1 & 2.

STA.	SURFACE ELEVA.	SEWER GRADE	RATE	SIZE OF PIPE	REMARKS.
0+00	37.5	26.16	0.57%	12x15"	M.H. Cen. 19th St. Sta. 5+20.5=0. 12x15" Increaser.
0+50	37.0	26.44	"	12"	Running north on center line of Alley
1+00	37.0	26.72	"	"	
1+50	36.0	27.01	"	"	
1+62.5	37.0	27.09	0.546%	"	M.H. Sta. 1+62.5=0 of northerly extension
2+00	37.3	27.29	"	"	Running west on center line of Alley
2+50	37.1	27.56	"	"	
3+00	37.0	27.83	"	"	
3+50	37.0	28.10	"	"	
3+92.57	37.3	28.33	"	10"	M.H. in Baxter Ave.
4+00	37.3	28.37	"	"	
4+50	37.4	28.65	"	"	
5+00	37.7	28.92	"	"	
5+50	37.8	29.19	"	"	
6+00	38.1	29.49	"	"	
6+50	38.6	29.76	"	"	
6+87.64	39.1	30.03	"	"	M.H. End of Sewer at Cumming Ave.
0+00	37.0	27.09	0.75%	10"	M.H. Sta. 0=1+62.5 of westerly extension
0+50	36.3	27.46	"	"	Running north on center line of Alley.
1+00	36.0	27.83	"	"	
1+17	36.3	27.97	"	"	M.H. End of Sewer at 18th St.

Contract No 1143. Contract let, July 9, 1909, Completed Aug. 28, 1909.
JOHNSON & JOHNSON, CONTRACTORS. A. SOLIN, INSPECTOR. E. B. BANKS, CITY ENGR



SCALE { HORIZONTAL ... 1" = 60'
VERTICAL ... 1" = 4'
SECTIONS ... 1" = 2'

BASE LINE 20 FT ABOVE CITY DATUM