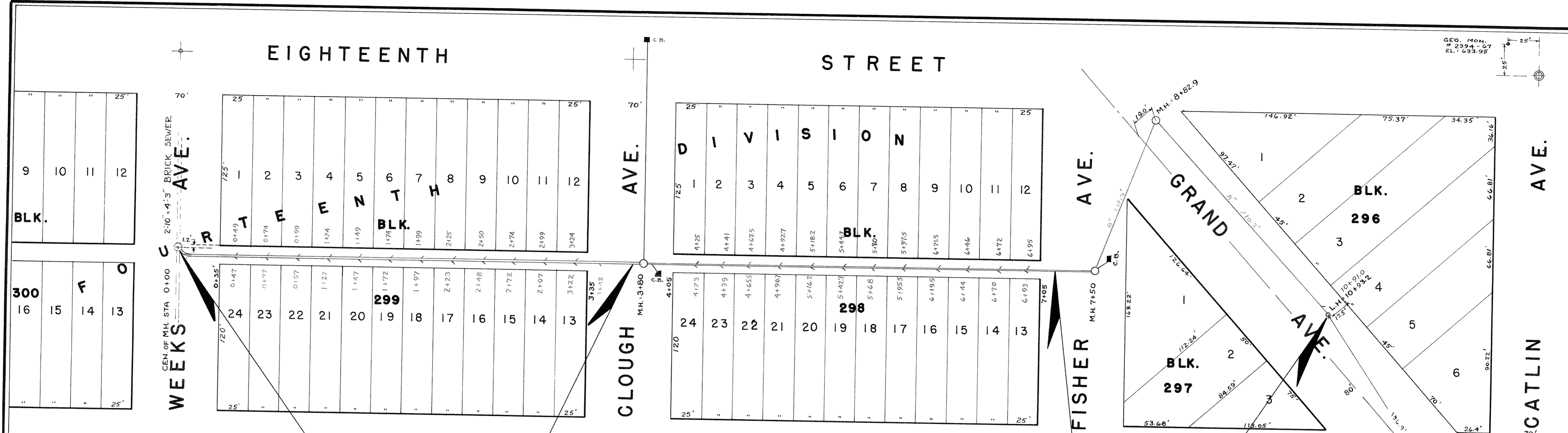


GEO. MON.
2394-67
EL. 633.95



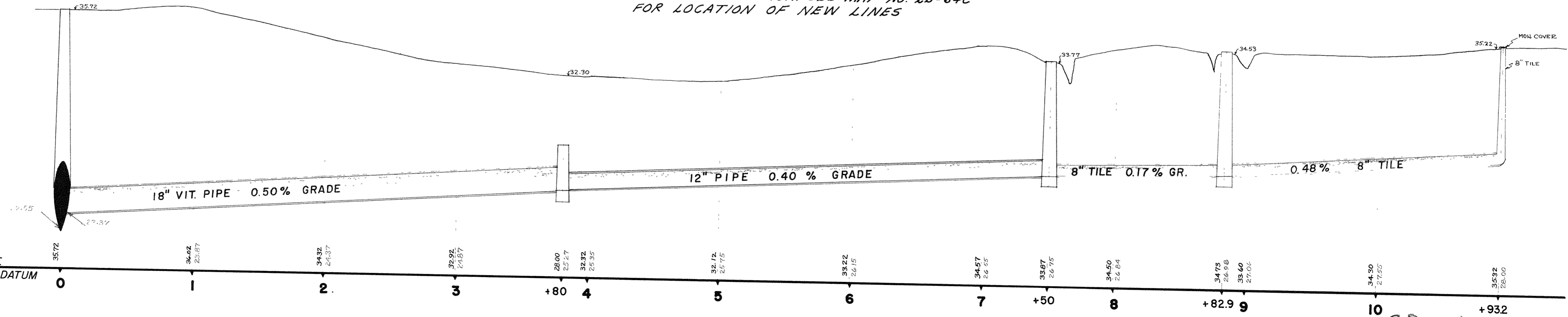
**CITY OF SUPERIOR
SEWER PLAN**
HORIZONTAL SCALE 1" = 50'
VERTICAL SCALE 1" = 4'
SEWER COMPLETED 1947
ELLIS PLUMBING- CONTRACTOR
FINAL SURVEY APRIL 1948
GRAND AVE. TO FISHER AVE.
PUB. WKS. DIRECTOR H. DANN

STA. 0+00 TO STA. 3+68
CONTRACT LET JUNE 29, 1908
CONTRACT COMPLETED 9-3-1908
ANDERSON & JOHNSON CONTRACTORS
A. SOLIN INSPECTOR
E. B. BANKS CITY ENGINEER

STA. 3+68 TO STA. 7+50
CONTRACT LET JUNE 5, 1913
CONTRACT COMPLETED DEC. 1, 1913
RUSSELL CONST. CO. CONTRACTOR
J. B. GRAHAM INSPECTOR
E. B. BANKS CITY ENGINEER

STA. 7+50 TO STA. 10+93.2
CONTRACT LET
CONTRACT COMPLETED
ELLIS PL'BG. CO. CONTRACTOR
INSPECTOR

NOTE: THESE PORTIONS OF EXISTING SEWER
HAVE BEEN ABANDONED BECAUSE OF
COLLEGE EXPANSION. SEE MAP NO. 2B-64C
FOR LOCATION OF NEW LINES



2B-64B

F. N. WICK MAY 1, 1948

2B-64B