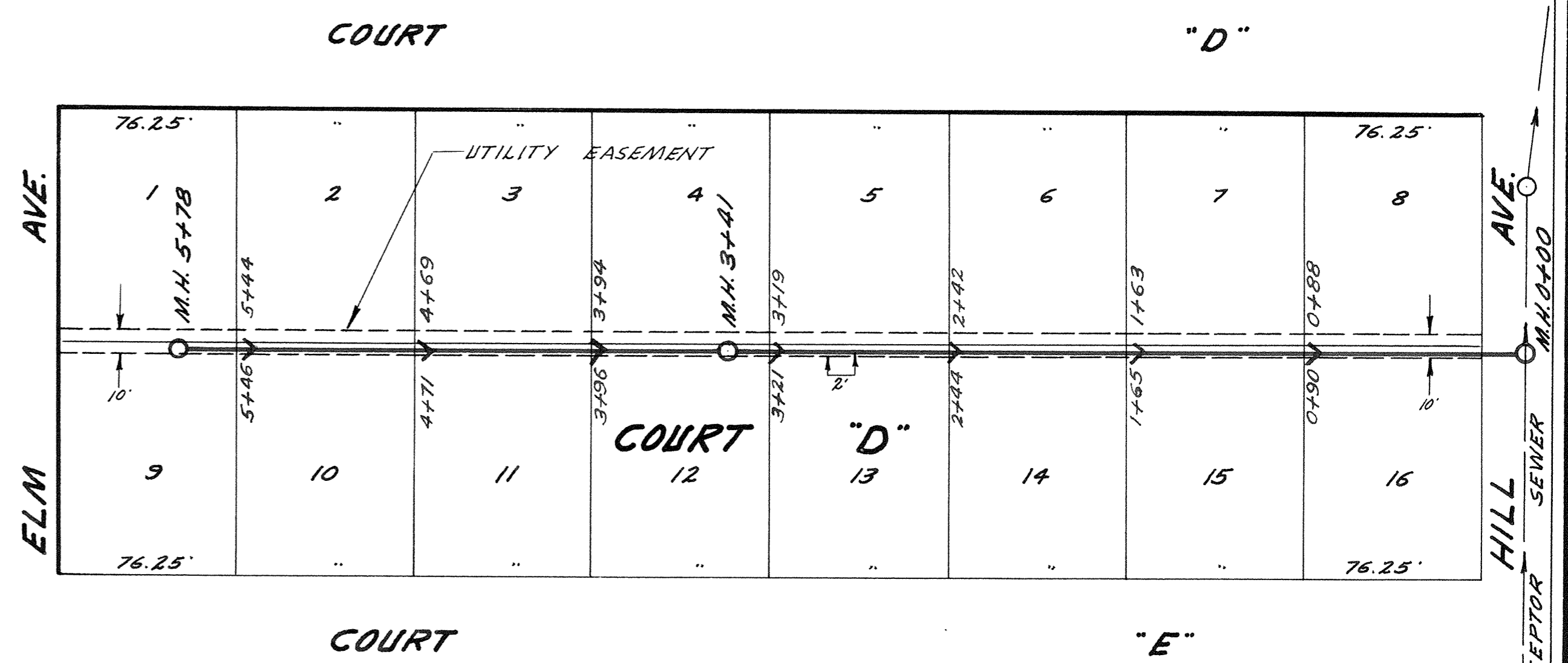


CITY OF SUPERIOR
SANITARY SEWER DIST. NO. 2B

JOB STARTED DECEMBER 1960
 JOB COMPLETED DECEMBER 1960
 HORIZONTAL SCALE 1" = 50'
 VERTICAL SCALE 1" = 4'
 CITY ENGINEER E.W. BERG
 CONTRACTOR SIG STAE

NOTE: ALL JOINTS HOT POURED (ASPHALTIC BASE)



CITY OF SUPERIOR
SANITARY SEWER DIST. NO. 2B

JOB STARTED SEPT 1963
 JOB COMPLETED APR. 1964
 HORIZONTAL SCALE 1" = 50'
 VERTICAL SCALE 1" = 4'
 CITY ENGINEER E.W. BERG
 CONTRACTOR SIG STAE

NOTE: ALL JOINTS NEOPREME - SNAP JOINT

