

**Boundary Survey Lots 1 thru 15 incl., Block 161 (Vacated),
Lots 1 thru 16 incl., Block 162 (Vacated),
Lots 1 thru 12 incl., & Lots 17 thru 32 incl.,
Block 163, together with vacated streets
and alleys, West Superior Sixth Division**

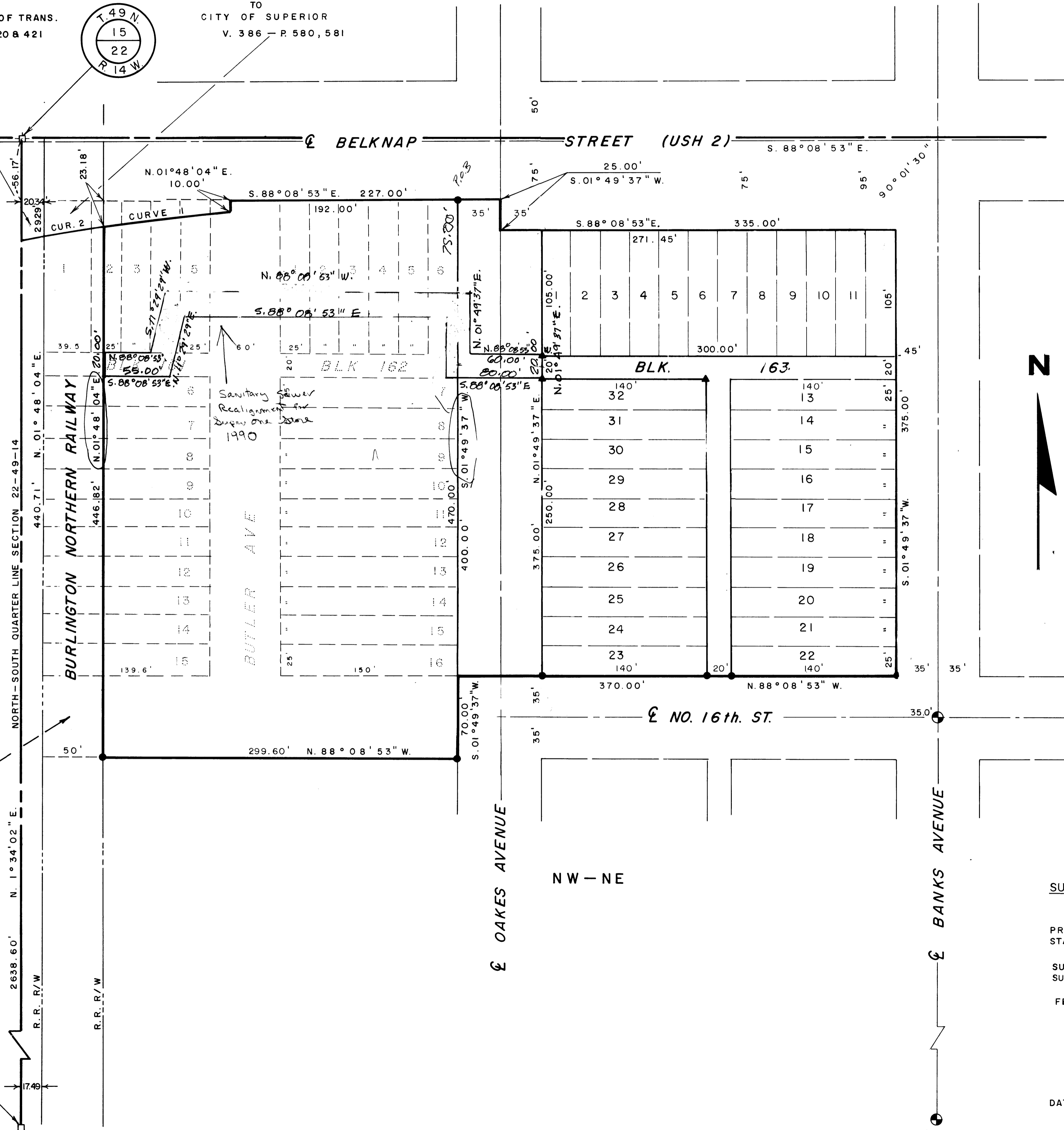
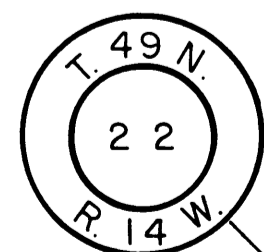
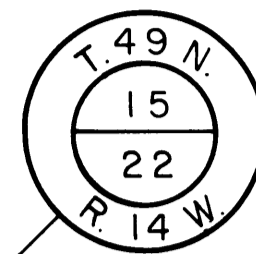
EASEMENT
BURLINGTON NORTHERN, INC.
TO
WISCONSIN DEPARTMENT OF TRANS.
V. 396 - P. 418, 419, 420 & 421

EASEMENT
SOO LINE RAILROAD COMPANY
TO
CITY OF SUPERIOR
V. 386 - P. 580, 581

CURVE 1 DATA
A = 2° 29' 34" RT.
D = 2° 17' 43"
L = 108.61'
R = 2496.48'
L.C. = 108.60'
L.C. BRG. N. 85° 33' 46" E.

CURVE 2 DATA
D = 2° 17' 43"
L = 50.37'
R = 2496.48'
L.C. = 50.37'
L.C. BRG. N. 84° 52' 37" E.

ELECTRIC EASEMENT
SOO LINE RAILROAD CO.
TO
SUPERIOR WATER, LIGHT
& POWER COMPANY
V. 269 - P. 461, 462

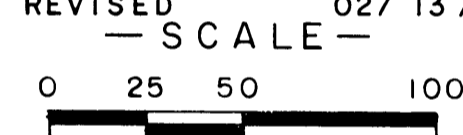


BASIS OF BEARINGS

BEARINGS ARE REFERENCED TO THE WISCONSIN STATE PLANE COORDINATE SYSTEM, WITH 0° 00' 00" BEING "GRID NORTH".

— LEGEND —

- ⊕ DENOTES MONUMENT IN PLACE
 - SET 3/4" X 24" REROD
 - ▲ SET RR SPIKE IN BITUMINOUS SURFACE
- DATE OF SURVEY: NOVEMBER 1989
DRAFTED BY: H. C. McDONALD
REVISED 01/18/90
REVISED 02/13/90



ORIGIN OF LEVELS

IRON BOLT PAINTED BLUE
S.W. CORNER STREET LIGHT
S.W. CORNER BELKNAP & BANKS
ASSUMED ELEV. 1000.00

TBM - FIRE PLUG
N.W. COR. 16 TH. AND OAKES
ELEV. 1004.73

AREA OF PARCEL SURVEYED: 260,125.26 SQ. FT. =
5.97 ACRES



SURVEYORS CERTIFICATE

I, HUGH C. McDONALD, WISCONSIN LAND SURVEYOR, HEREBY CERTIFY:
THAT I HAVE SURVEYED, DIVIDED AND MAPPED THE ABOVE DESCRIBED PROPERTY LOCATED IN THE CITY OF SUPERIOR, COUNTY OF DOUGLAS, STATE OF WISCONSIN;
THAT THIS MAP IS A TRUE AND ACCURATE REPRESENTATION OF SAID SURVEY AND CORRECTLY SHOWS THE EXTERIOR BOUNDARIES OF THE LAND SURVEYED;
THAT THIS MAP SHOWS THE LOCATION OF ALL VISIBLE STRUCTURES, FENCES, APPARENT EASEMENTS, ROADWAYS, AND ENCROACHMENTS, IF ANY.

DATED AT SUPERIOR, WISCONSIN THIS 5TH DAY OF DECEMBER, 1989

Hugh C. McDonald
HUGH C. McDONALD RLS # 1348