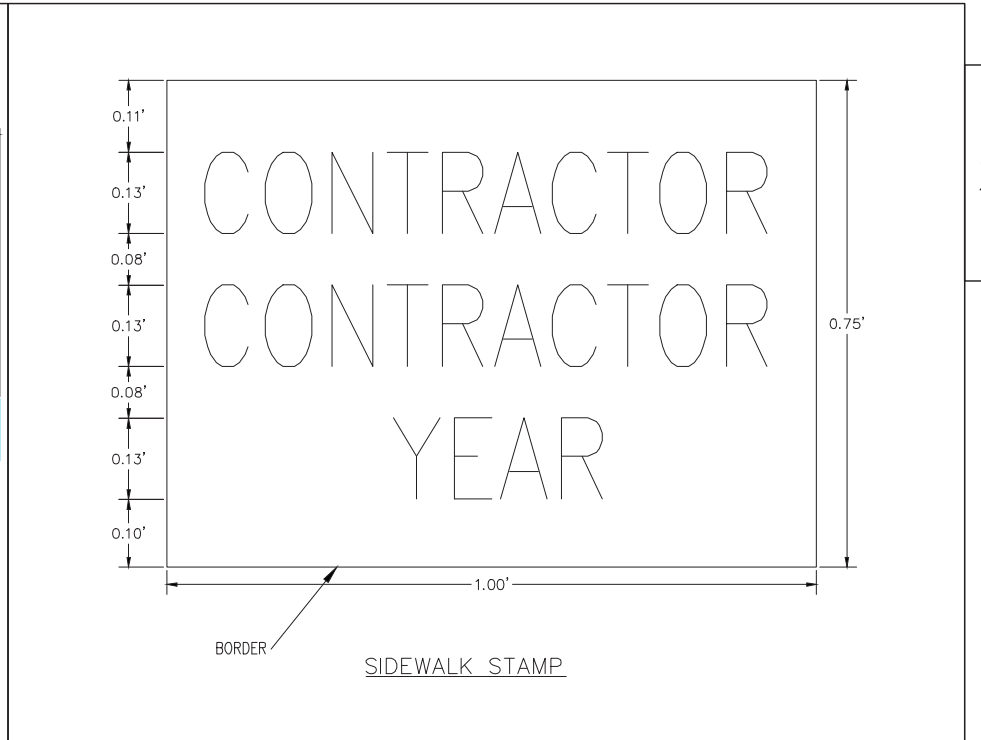
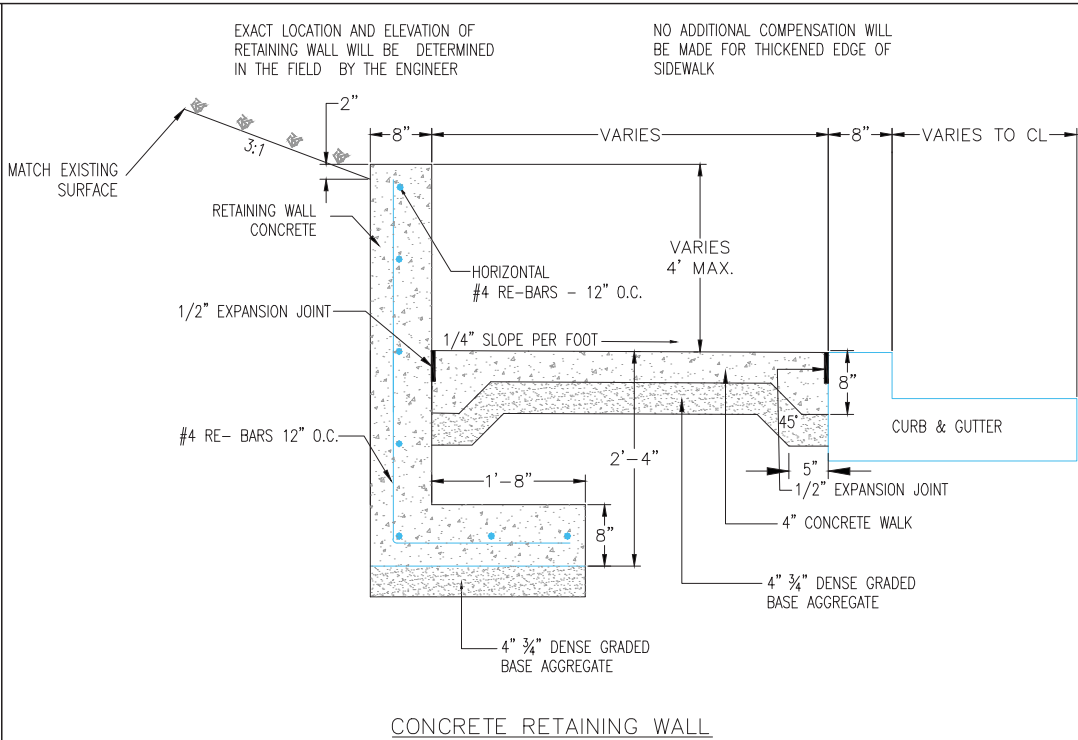
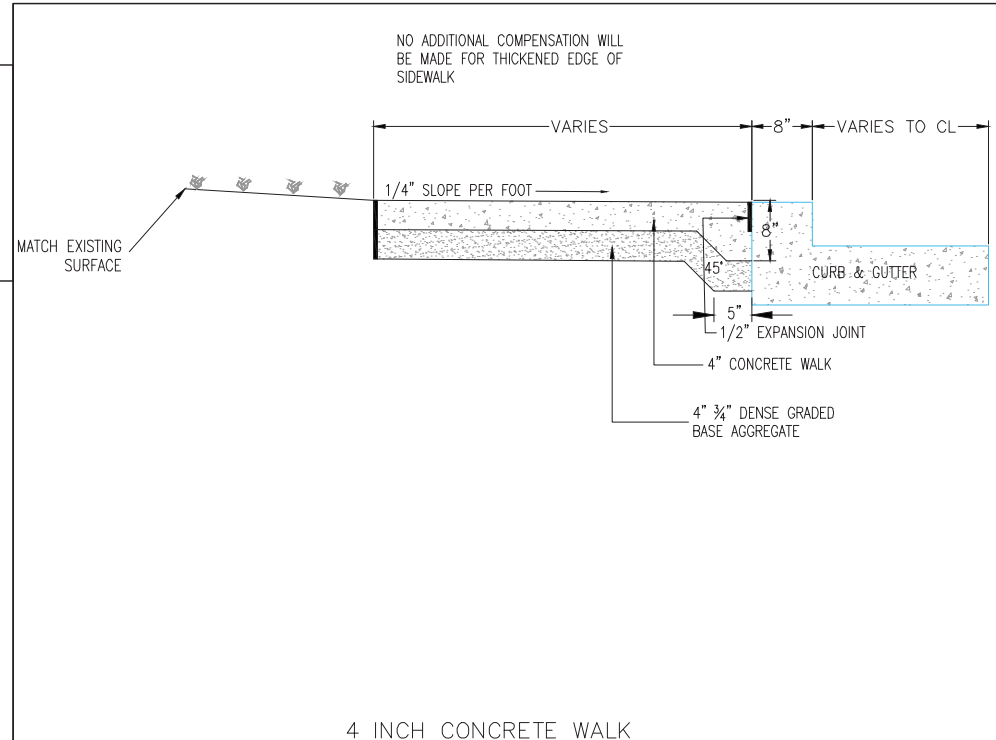
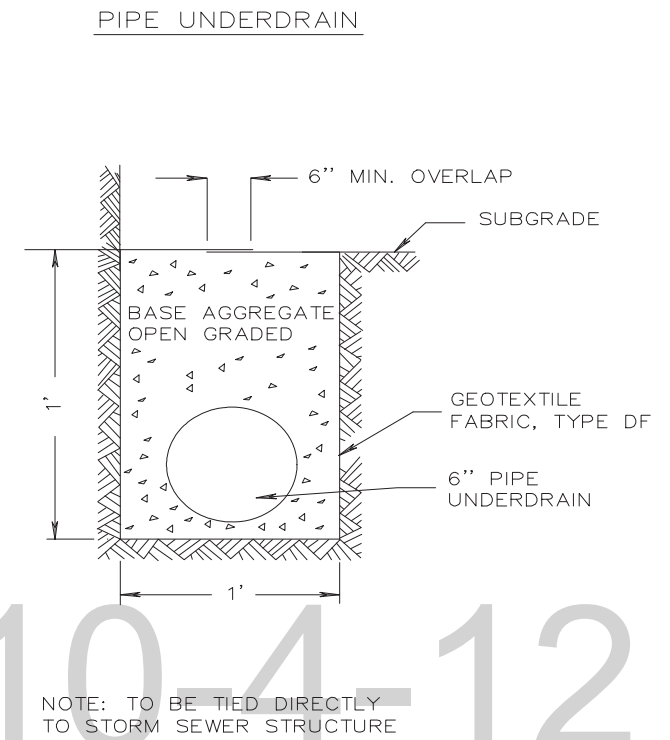
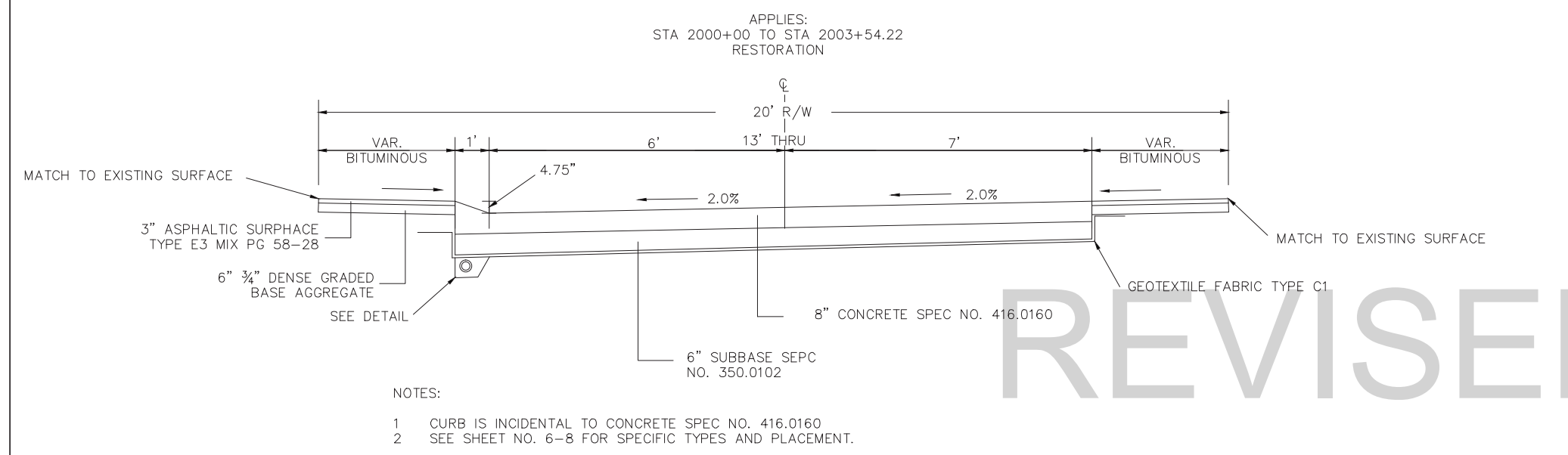
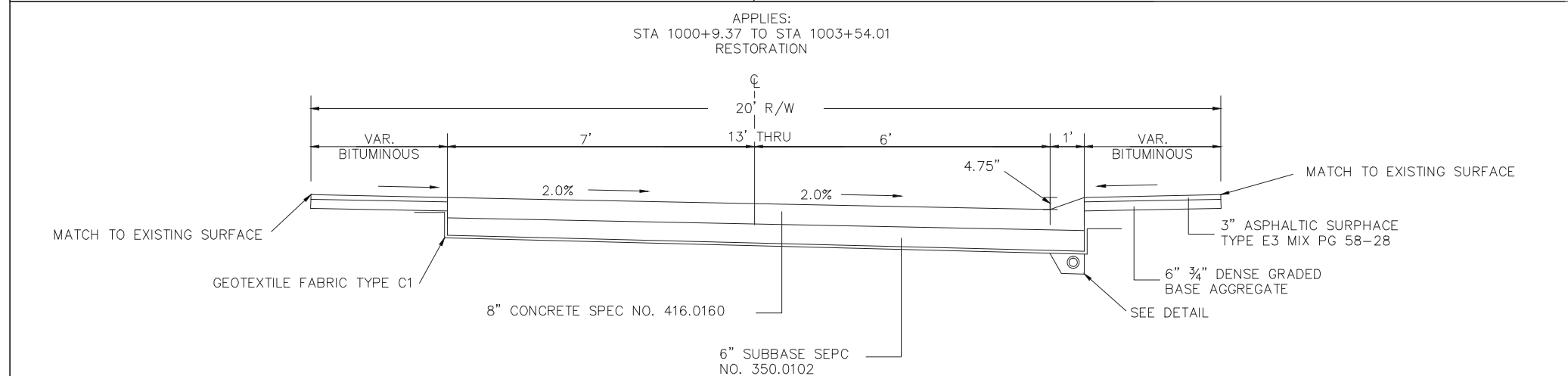


2

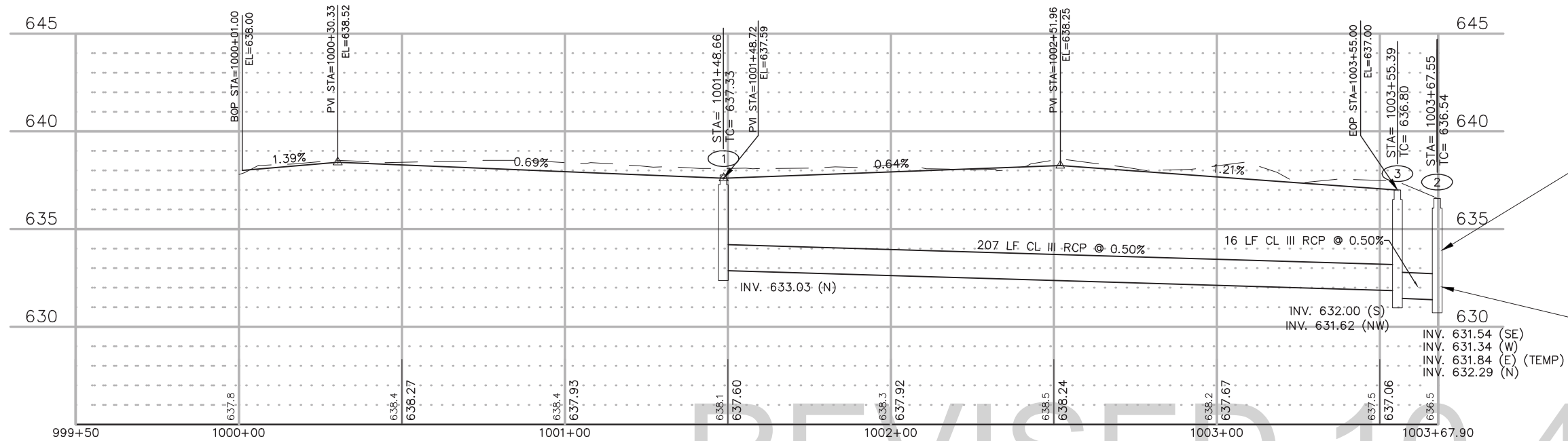
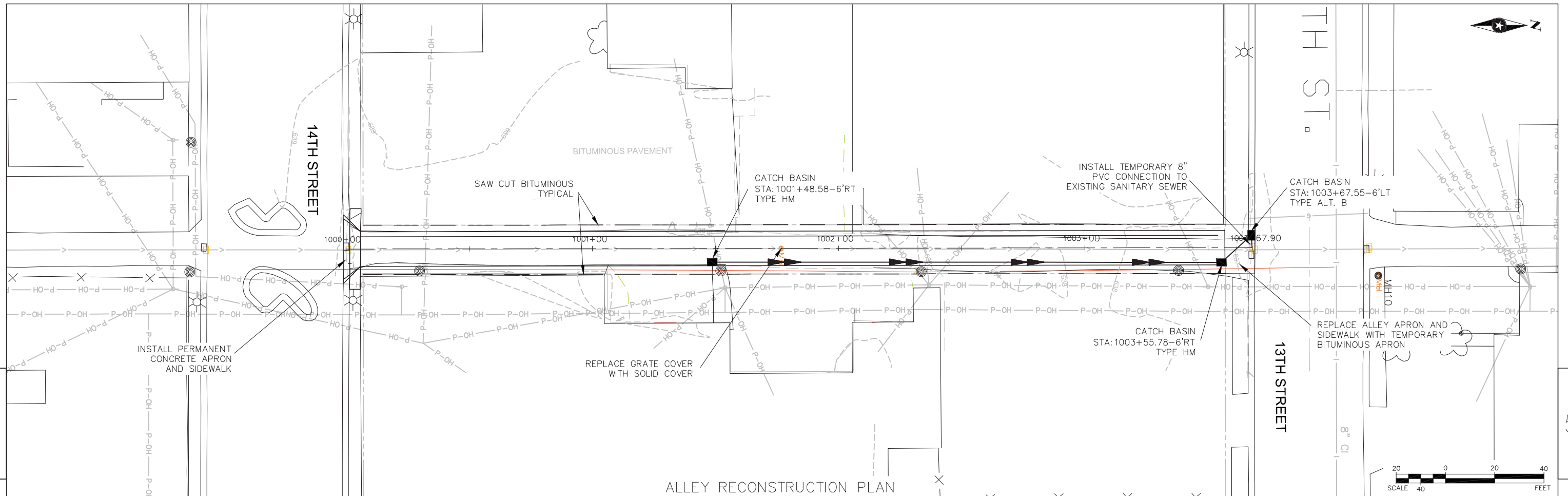


2

- NOTE:
1. PLACED AS DIRECTED BY THE ENGINEER IN THE FIELD.
 2. PLACED ON ALL CURB RAMPS.
 3. PLACED ON ONE PANEL EVERY 10 PANELS.
 4. 1/4" RELIEF FOR LETTERS AND BORDER.
 5. CONTRACTOR SHALL SUBMIT TO THE ENGINEER IN THE FIELD FOR REVIEW, A SHOP DRAWING OF THE STAMP PRIOR TO FABRICATION. IF PREVIOUSLY FABRICATED, THE STAMP SHALL BE PRESENTED TO THE ENGINEER FOR INSPECTION PRIOR TO USE.



REVISED 10-4-12



CREATE TEMPORARY 8" SDR-35 PVC CONNECTION TO EXISTING SANITARY SEWER BY CORING INTO EXISTING STRUCTURE AND FILLING AROUND PIPE WITH NON-SHRINK GROUT. PIPE, GROUT, AND CORING SHALL BE CONSIDERED INCIDENTAL.

CREATE OPENING IN PRECAST STRUCTURE FOR CONNECTIONS TO FUTURE 12" RCP (N) AND 24" RCP (W) STORM SEWER. PROVIDE TEMPORARY 3/4" TREATED PLYWOOD COVERS FOR OPENING TO FUTURE CONNECTION PRIOR TO BACKFILLING STRUCTURE. (ALL INCIDENTAL)

REVISED 10-4-12