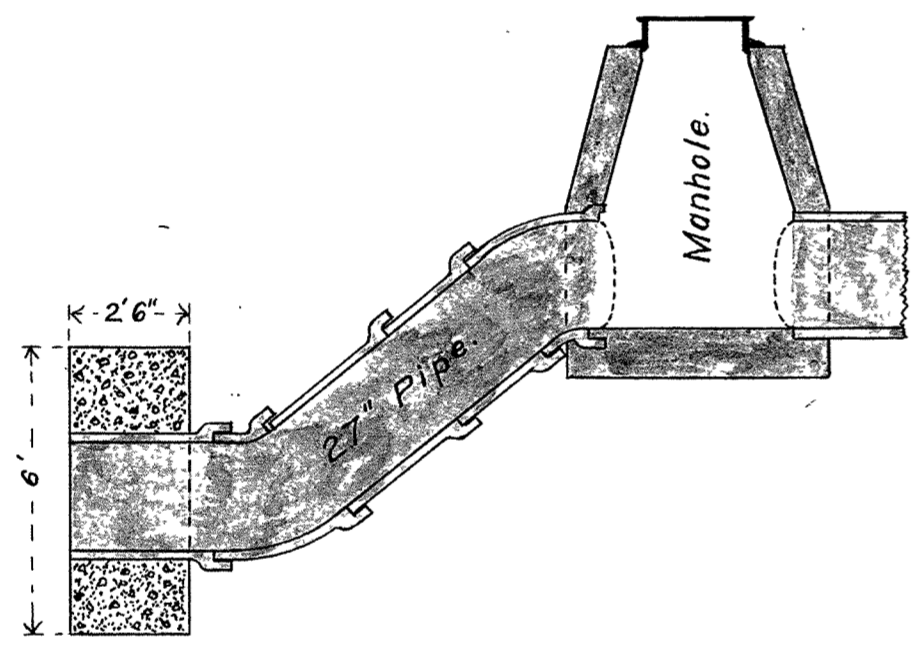


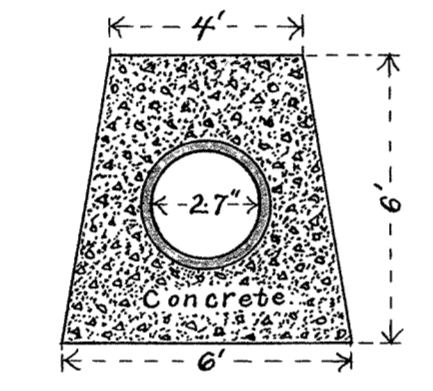
CITY OF SUPERIOR SEWER PLAN

Contract let July 21, 1904.
 " completed Nov. 10, "
 Anderson & Johnson, Contractors.
 F. Richardson, Inspector.
 Howard Thomas, City Engineer.

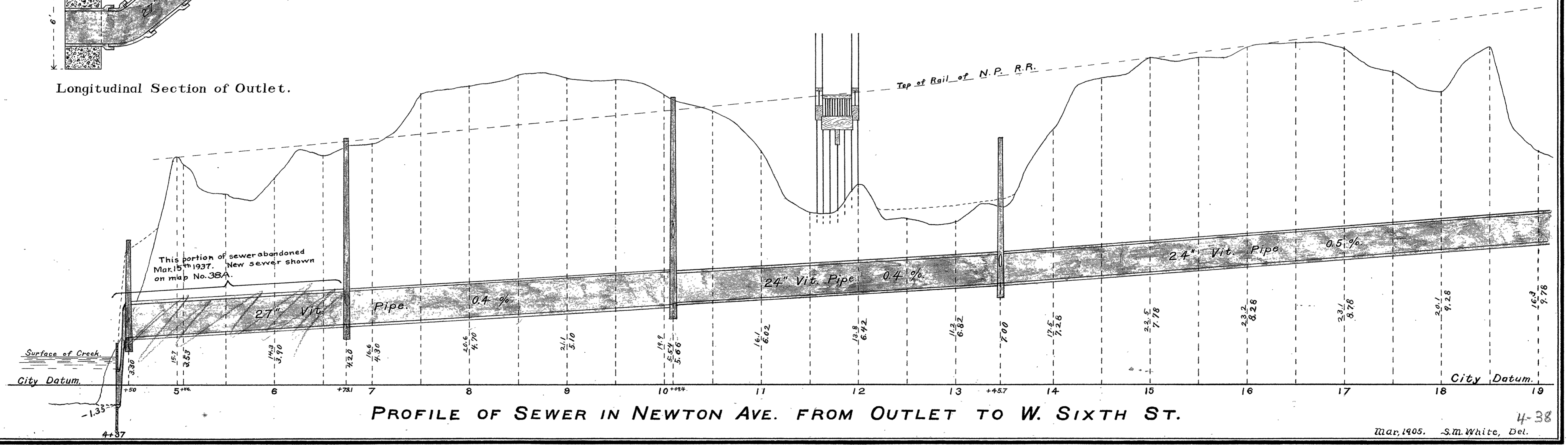
Scale : { Horizontal : 1" = 60'.
 Vertical : 1" = 4'.
 Section : 1" = 4'.



Longitudinal Section of Outlet.



End Elevation.



PROFILE OF SEWER IN NEWTON AVE. FROM OUTLET TO W. SIXTH ST.

Mar. 1905. S.M. White, Del. 4-38