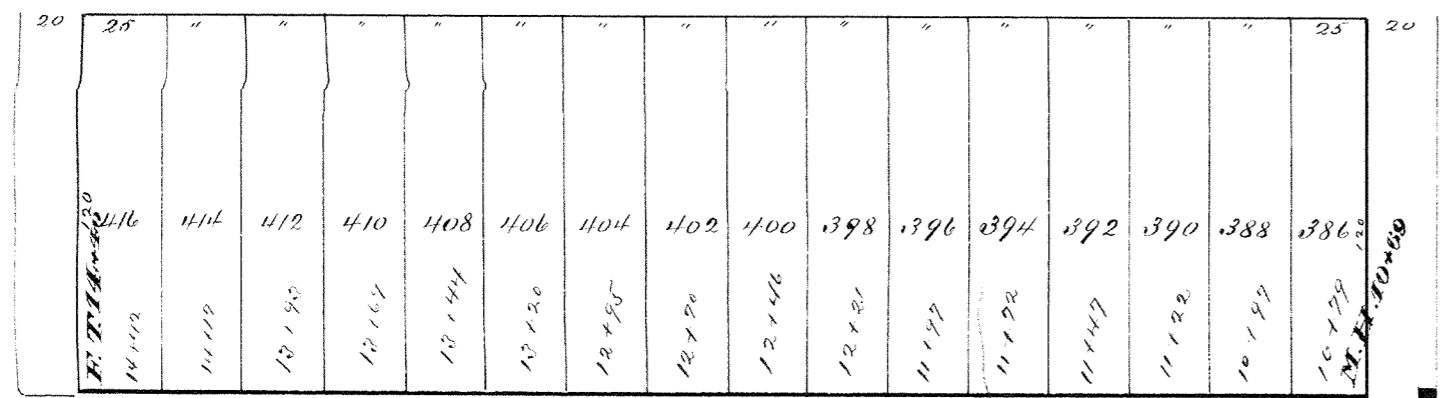
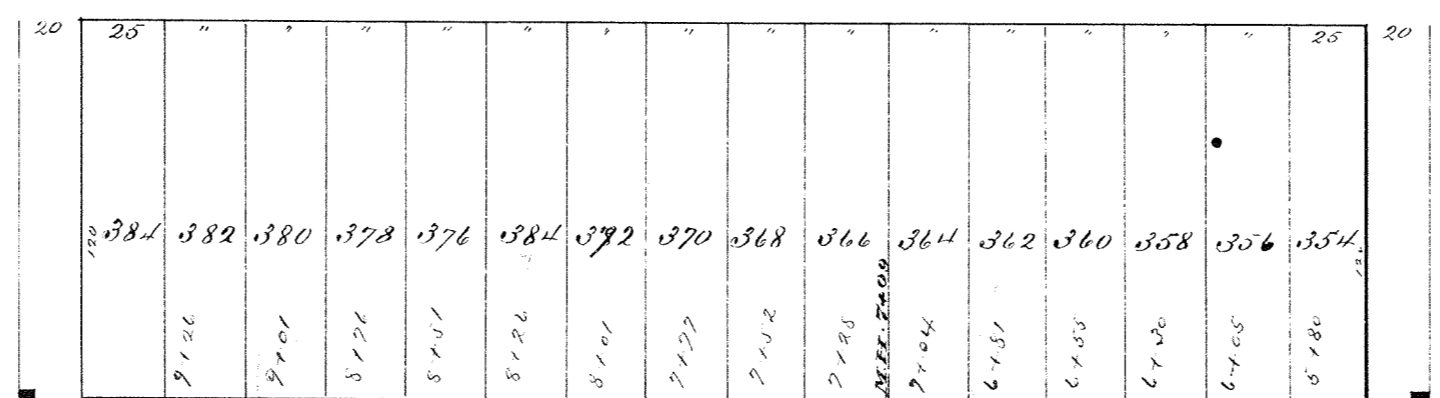


18TH AVE. EAST

W. EIGHTH ST.

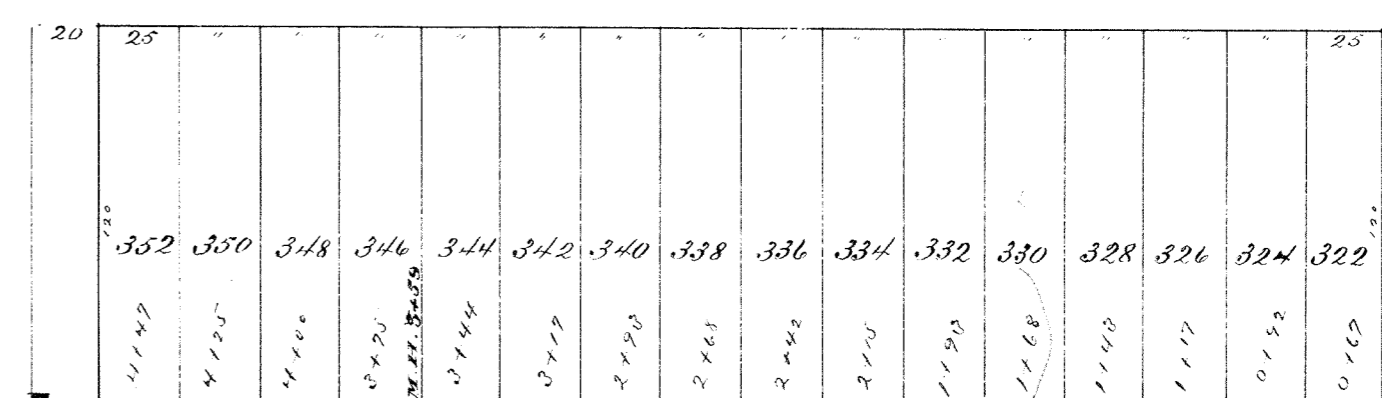


19TH AVE. E.



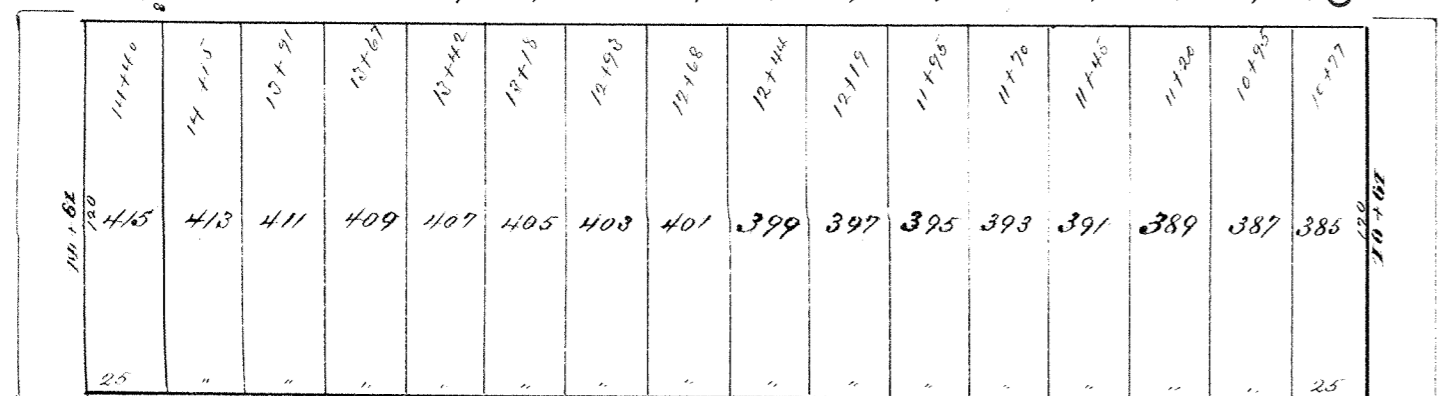
20TH AVE. E.

ST.

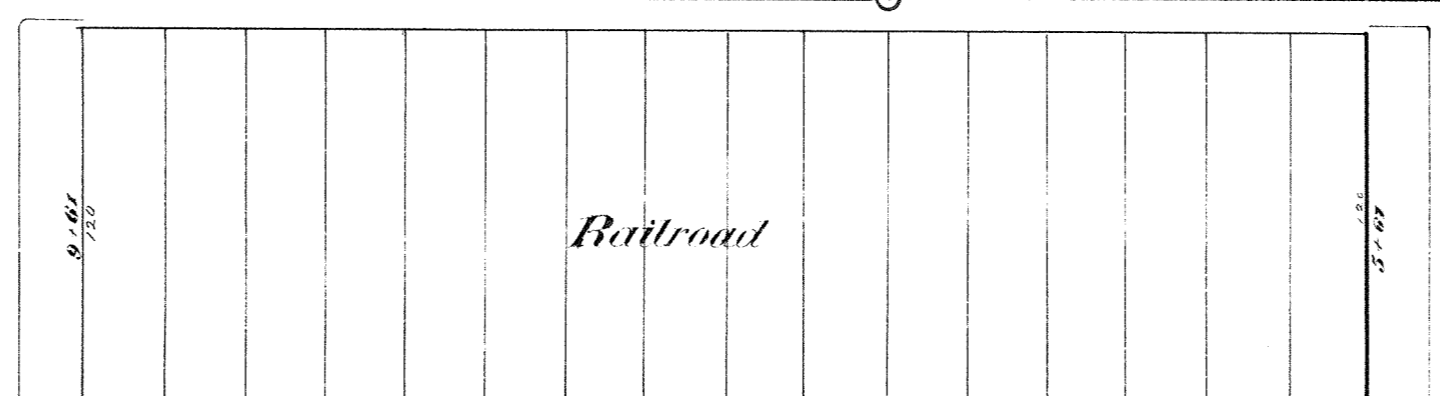


21ST AVE. E.

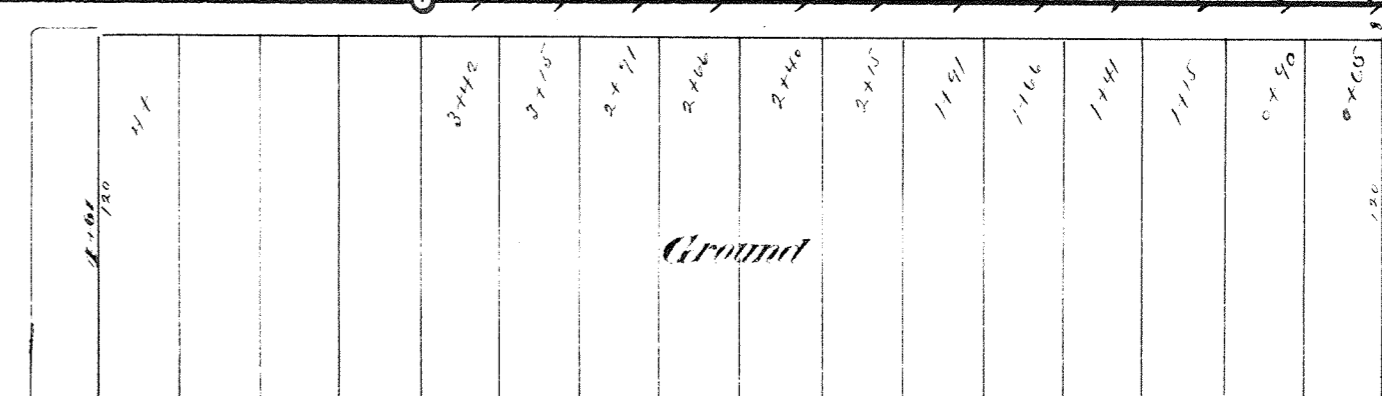
CARLTON



ST. JOHN



HOLLINSHEAD



NETTLETON

W. NINTH ST.

ST.

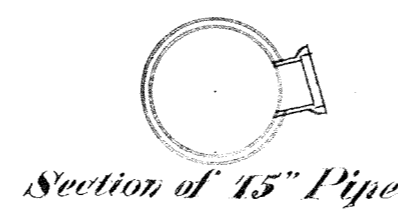
C. S. P. M. S. O. R.

Note: No connection required for lot 385.

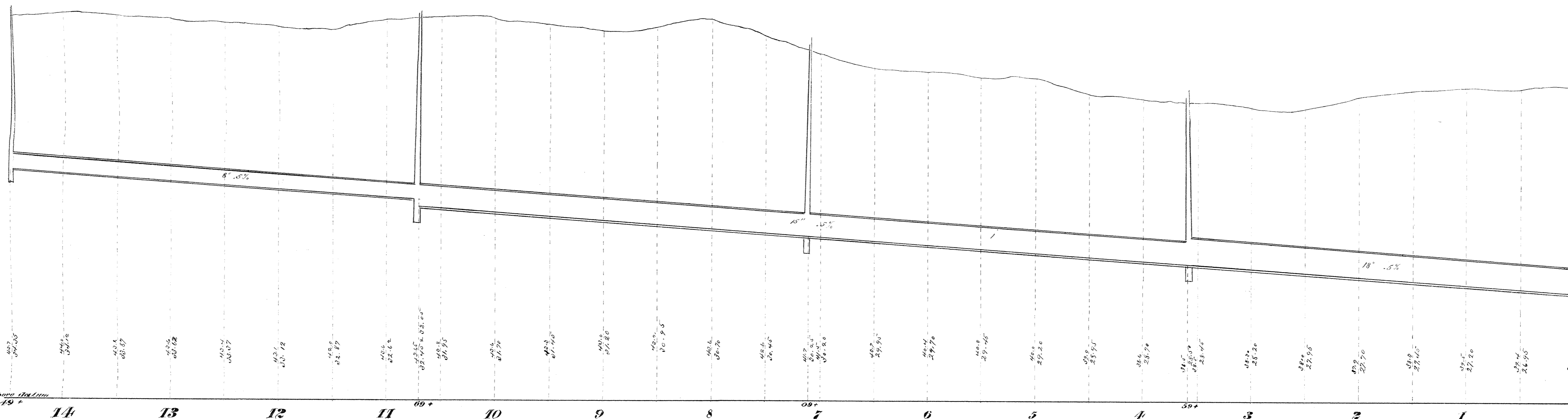
CITY OF SUPERIOR

SEWER PLAN

Contract let April 3, 1891
 completed Aug. 1, 1891
 F. A. Dole, Contractor
 Wm G. Coleman, Inspector
 E. B. Banks, City Engr.



Scale: Horizontal 1" = 60'
 Vertical 1" = 4'
 Section 1" = 2'



Baseline 20' above datum

14 13 12 11 10 9 8 7 6 5 4 3 2 1 0

Plan & Profile of Sewer in Alley betw. W. Eighth and W. Ninth Strs. from Nettleton to Carlton Ave.