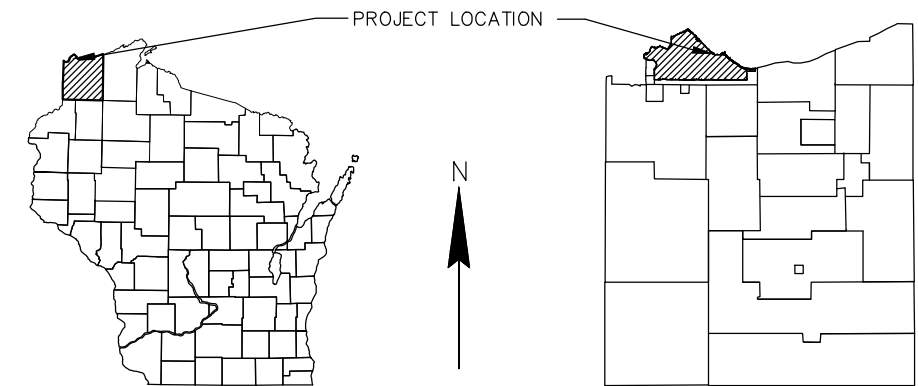
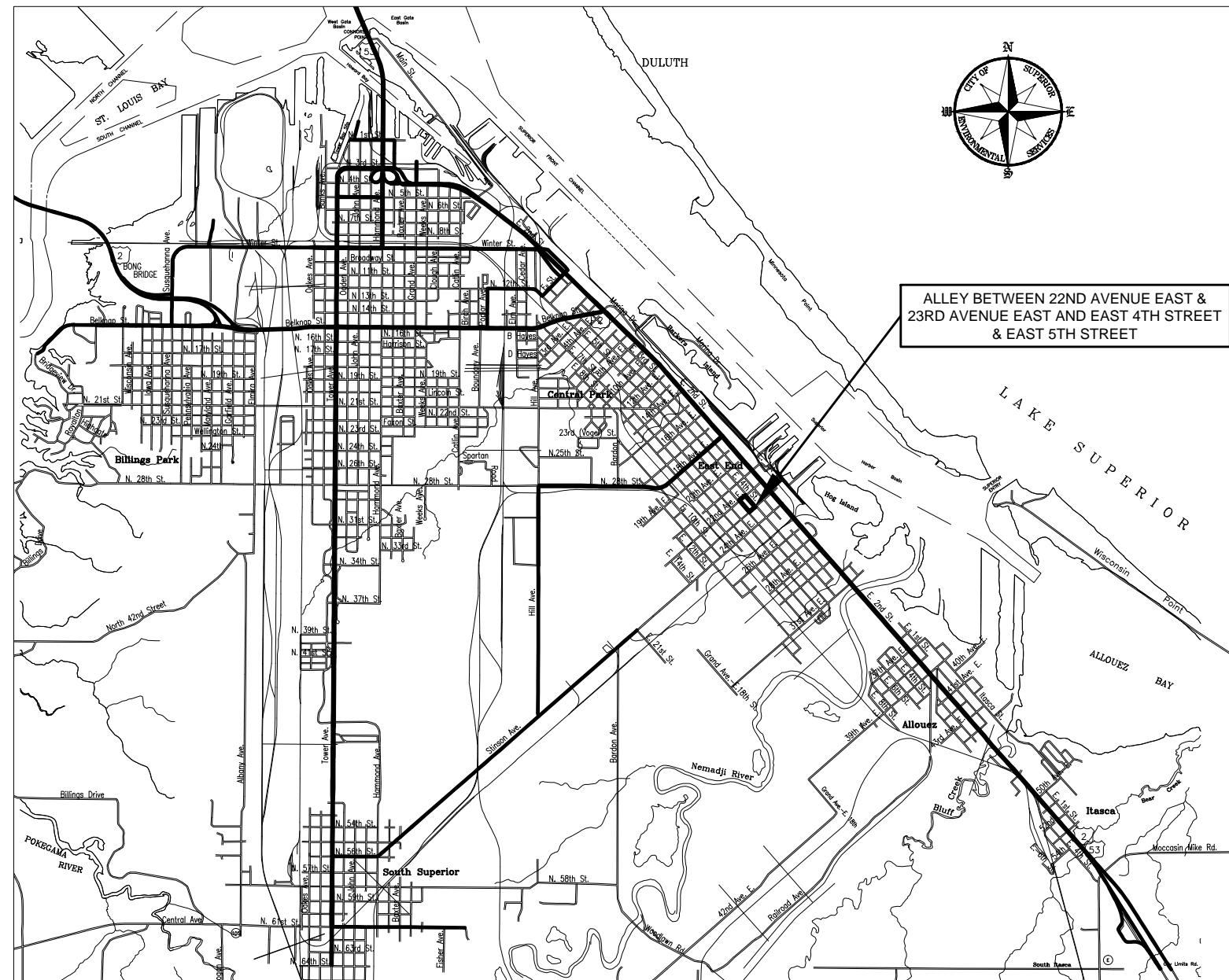


PART B

ALLEY BETWEEN 22ND AVENUE EAST & 23RD AVENUE EAST AND EAST 4TH STREET & EAST 5TH STREET

CONSTRUCTION PLAN FOR: SANITARY SEWER, STORM SEWER, AND BITUMINOUS SURFACE



INDEX OF SHEETS

TITLE & PROJECT LOCATION.....	1
ESTIMATED QUANTITIES.....	2
PROJECT OVERVIEW.....	3
ALIGNMENT DIAGRAM.....	4
SANITARY PLAN & PROFILE.....	5
STORM PLAN & PROFILE.....	6
ALLEY PLAN & PROFILE.....	7
TYPICAL FINISHED SECTIONS.....	8
TRAFFIC CONTROL.....	9
ROAD CLOSURE (STD.).....	10
BARRICADE (STD.).....	11
SANITARY MANHOLE, CASTING, AND PIPE FINISHED TRENCH (STD.).....	12
CATCH BASIN CONE DETAIL & INLET COVER TYPE HM.....	13
CONCRETE COLLAR DETAIL.....	14

APPROVED:
CITY OF SUPERIOR ENGINEERING DIVISION
DATE: 7/25/2013
SIGNATURE:

THE LOCATION OF EXISTING UNDERGROUND UTILITIES ARE SHOWN IN AN APPROXIMATE WAY ONLY AND HAVE NOT BEEN INDEPENDENTLY VERIFIED BY THE OWNER OR ITS REPRESENTATIVE. THE CONTRACTOR SHALL DETERMINE THE EXACT LOCATION OF ALL EXISTING UTILITIES BEFORE COMMENCING WORK, AND AGREES TO BE FULLY RESPONSIBLE FOR ANY AND ALL DAMAGES WHICH MIGHT BE OCCASIONED BY THE CONTRACTOR'S FAILURE TO EXACTLY LOCATE AND PRESERVE ANY AND ALL UNDERGROUND UTILITIES.

FOR FIELD LOCATES
CALL: 1.800.242.8511
WWW.DIGGERSHOTLINE.COM

GOVERNING SPECIFICATIONS:

THE WISCONSIN DEPARTMENT OF TRANSPORTATION 2013 SPECIFICATIONS FOR HIGHWAY CONSTRUCTION SHALL GOVERN THIS PROJECT

DESIGN TEAM: CHRIS CARLSON
NICK WILLIAMS
ANDREW RAUSCH



PART B

ALLEY BETWEEN 22ND AVENUE EAST & 23RD AVENUE EAST AND EAST 4TH STREET & EAST 5TH STREET

CONSTRUCTION PLAN FOR: SANITARY SEWER, STORM SEWER, AND BITUMINOUS SURFACE

ESTIMATED QUANTITIES				
BID ITEM	DESCRIPTION	UNIT	ESTIMATED QUANTITY	NOTE
204.0110	REMOVING ASPHALTIC SURFACE	SY	905	
204.0155	REMOVING CONCRETE SIDEWALK	SY	32	
204.0215	REMOVE CATCH BASIN	EACH	1	
204.0245	REMOVE STORM SEWER 8-INCH	LF	165	
205.0100	EXCAVATION COMMON (PLAN)	CY	1,638	1
305.0125	BASE AGGREGATE DENSE 1-1/4 INCH (PLAN)	CY	137	1
350.0102	SUBBASE (PLAN)	CY	272	1
416.0170	CONCRETE DRIVEWAY 7-INCH	SY	32	
520.8000	CONCRETE COLLARS FOR STORM SEWER PIPE	EACH	1	
611.0627	INLET COVERS TYPE HM	EACH	1	
611.1004	CATCH BASINS 4-FT DIAMETER	EACH	1	
612.0106	PIPE UNDERDRAIN 6-INCH	LF	442	
643.0100	TRAFFIC CONTROL (PROJECT)	EACH	1	3
645.0140	GEOTEXTILE FABRIC TYPE SAS (PLAN)	SY	905	1
650.4500	CONSTRUCTION STAKING	LF	454	5
690.0150	SAWING ASPHALT, FULL DEPTH	LF	120	
SPV.0060.01	REMOVE SANITARY MANHOLE	EACH	2	
SPV.0060.02	SANITARY SEWER CASTING	EACH	2	
SPV.0060.03	SANITARY SEWER WYE, 8-INCH X 6-INCH	EACH	13	
SPV.0060.04	CONNECT TO EXISTING SANITARY SEWER SERVICE, 6-INCH	EACH	13	
SPV.0060.05	CONNECT TO EXISTING STORM SEWER	EACH	1	
SPV.0090.01	SANITARY MANHOLE, 48-INCH	LF	24	
SPV.0090.02	REMOVE SANITARY SEWER, 8-INCH	LF	435	
SPV.0090.03	REMOVE SANITARY SEWER, 18-INCH	LF	26	
SPV.0090.04	SANITARY SEWER PIPE, 8-INCH	LF	435	
SPV.0090.05	SANITARY SEWER PIPE, 18-INCH	LF	26	
SPV.0090.06	SEWER FIELD QUALITY CONTROL - TELEVISION	LF	522	
SPV.0090.07	STORM SEWER, 8-INCH SMOOTH WALL POLYETHYLENE	LF	85	

CONSTRUCTION NOTES:	
1	PAYMENT BY PLAN QUANTITY ONLY
2	BASIS FOR QUANTITY: 118#/SY INCH
3	CONTRACTOR TO PROVIDE AND MAINTAIN TRAFFIC CONTROL DEVICES IN CONFORMANCE WITH THE MOST CURRENT VERSION OF THE MUTCD
4	16'-0" BEGINS AT THE BUILDING FACE ON THE SOUTHWEST END OF THE ALLEY AND WORKING AROUND OBSTRUCTIONS DURING PLACEMENT OF THE ASPHALT IS INCIDENTAL
5	INCLUDES ALL STAKING IN ORDER TO COMPLETE THE PROJECT

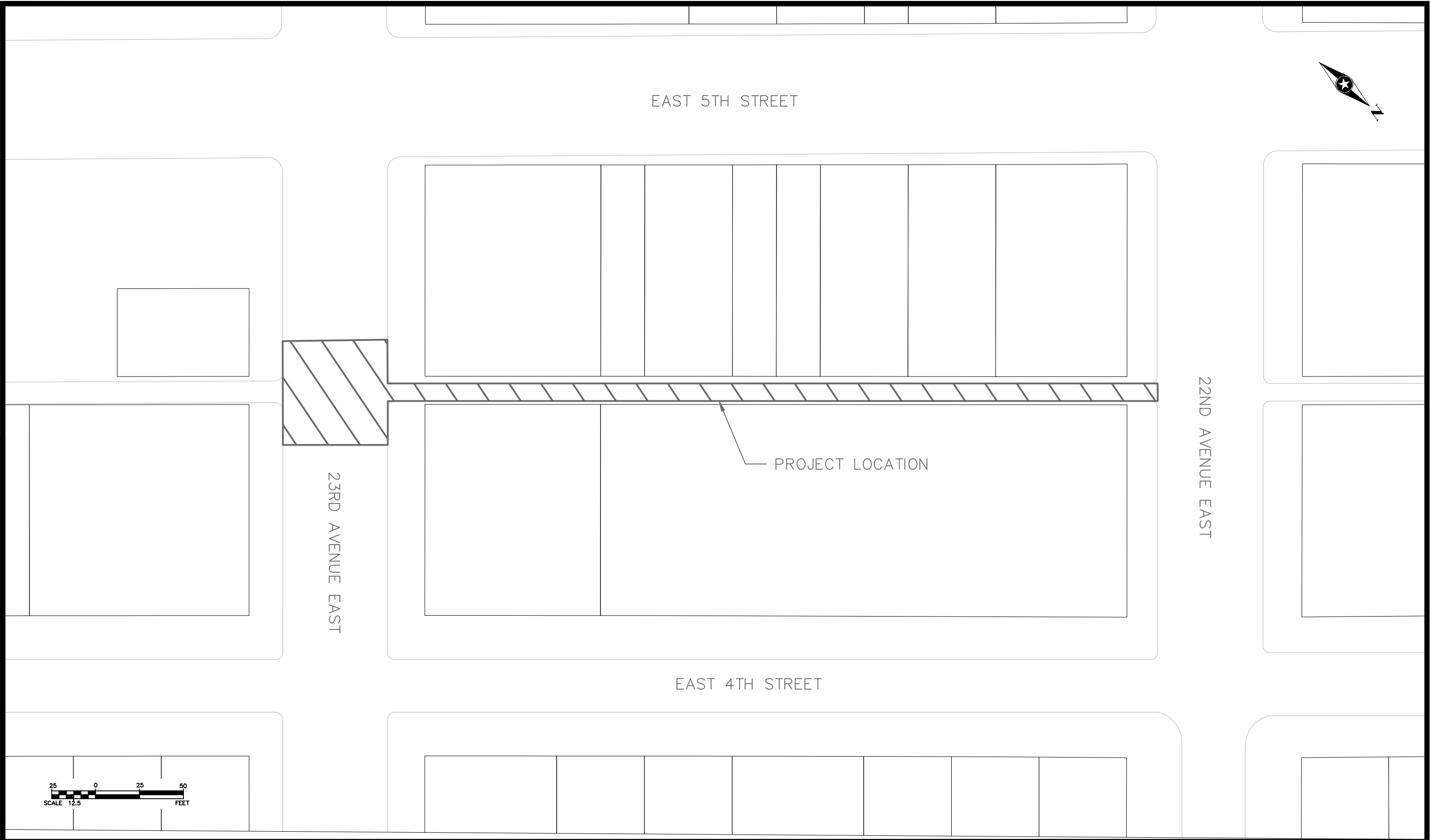
KNOWN UTILITY COMPANIES		
UTILITY	COMPANY	CONTACT TELEPHONE
WATER	SUPERIOR WATER, LIGHT AND POWER	(715) 394-2200
GAS	SUPERIOR WATER, LIGHT AND POWER	(715) 394-2200
ELECTRIC	SUPERIOR WATER, LIGHT AND POWER	(715) 394-2200
SANITARY SEWER	CITY OF SUPERIOR ESD	(715) 394-0392
STORM SEWER	CITY OF SUPERIOR ESD	(715) 394-0392
LIGHTING	CITY OF SUPERIOR PW	(715) 395-7334
TELEPHONE	CENTURYLINK	(715) 392-0033

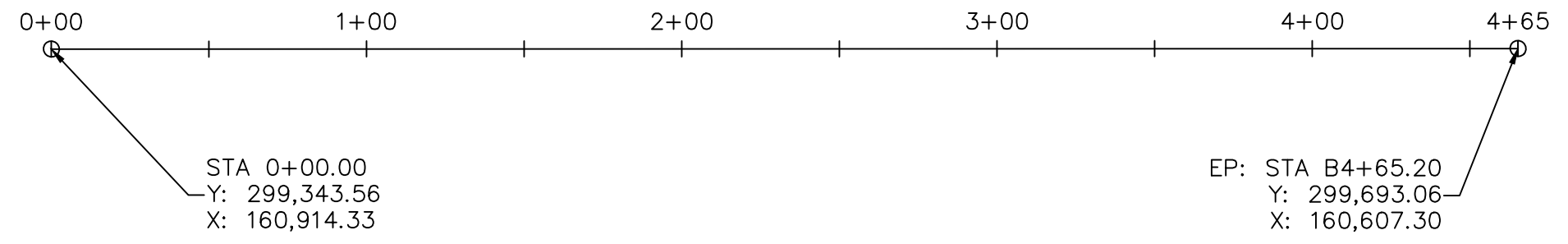
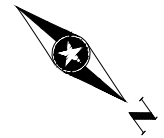
THERE IS ANOTHER PROJECT DIRECTLY ADJACENT TO THIS PROJECT FOR A NEW RETAIL SPACE INCLUDING A NEW SUPER ONE GROCERY STORE. PLEASE COORDINATE ALL CONSTRUCTION ACTIVITIES WITH JOHNSON WILSON CONSTRUCTORS:

PROJECT MANAGER:
ERIC HALBERT
OFFICE - (218) 628-0202
CELL - (218) 591-4512

SITE SUPERINTENDENT:
GENE FOLLIS:
CELL - (218) 591-4973





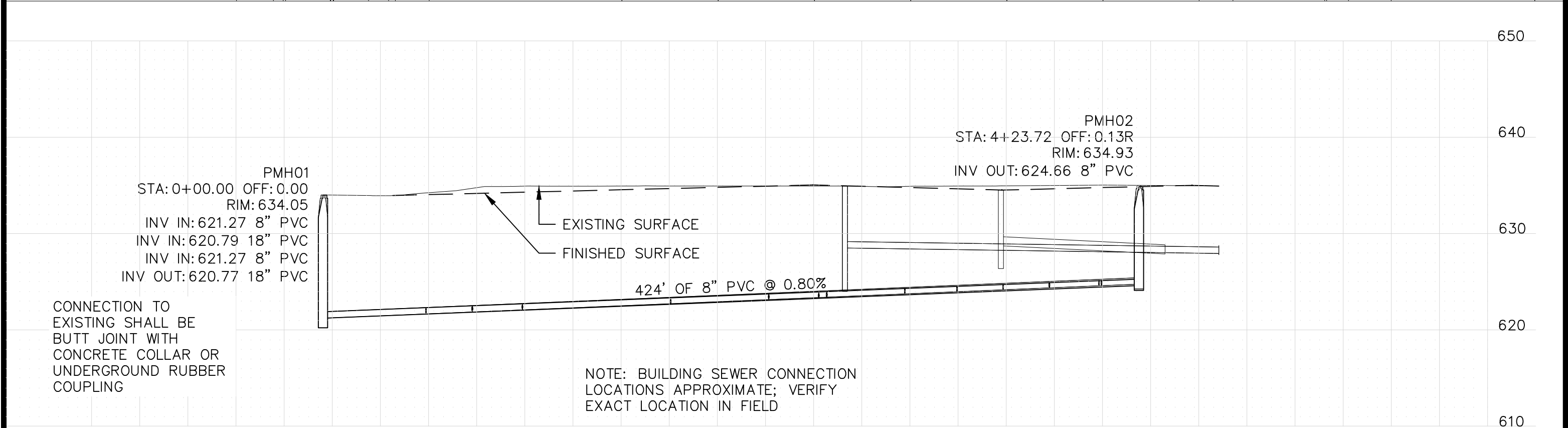
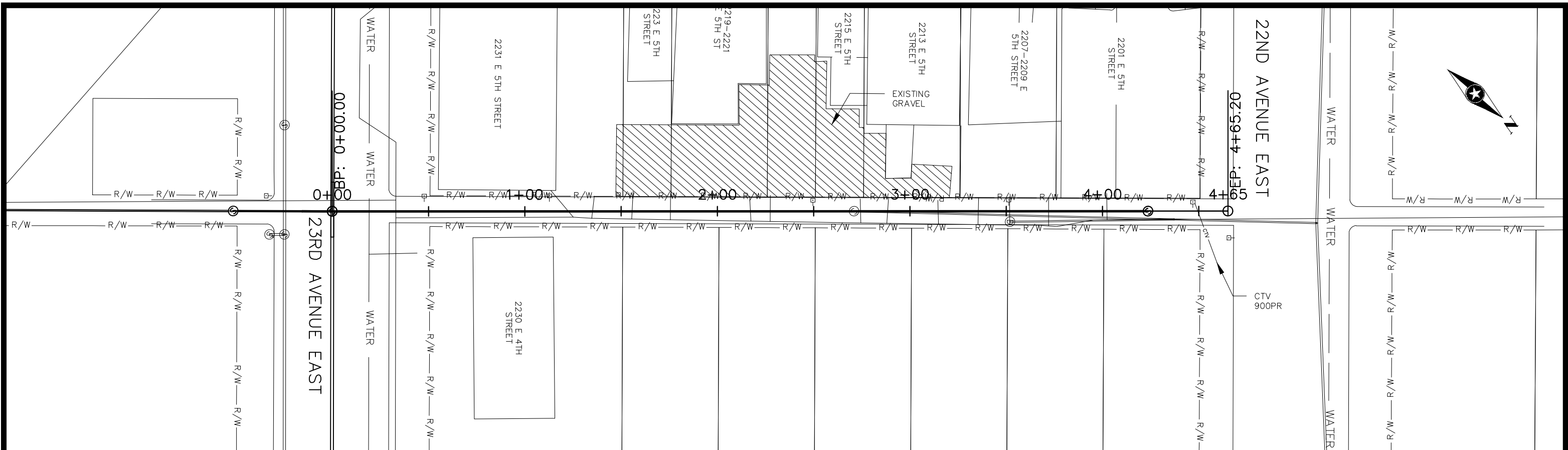


NOTE:
THE CITY OF SUPERIOR WILL PROVIDE 2 CONTROL POINTS WITHIN THE PROJECT LIMITS AND (1) BENCHMARK LOCATION. INFORMATION ON THESE LOCATIONS WILL BE AVAILABLE DURING THE PRE-CONSTRUCTION MEETING.

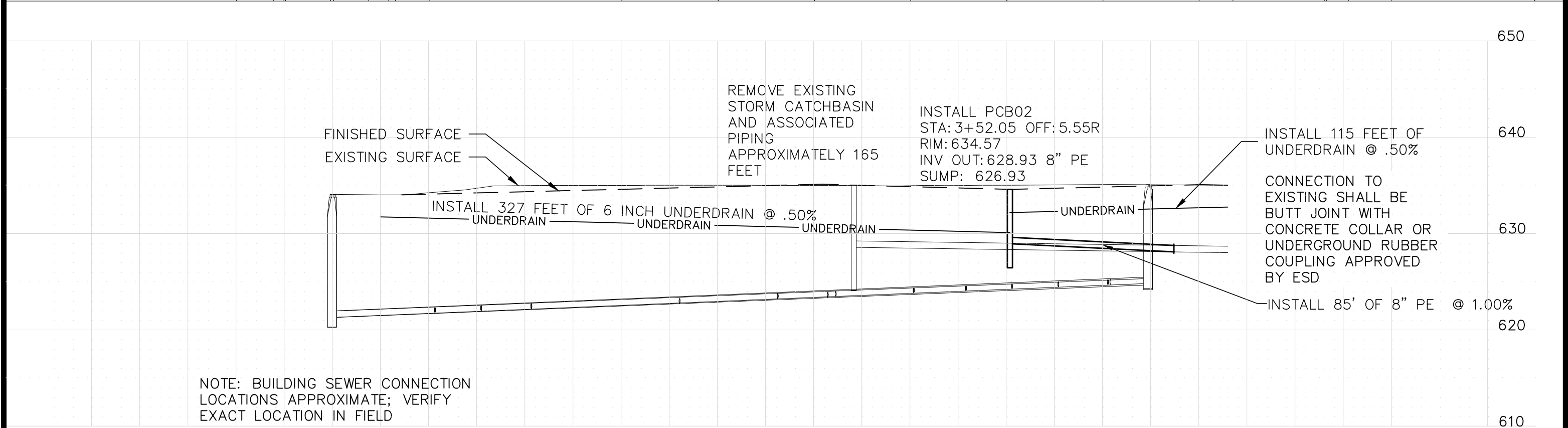
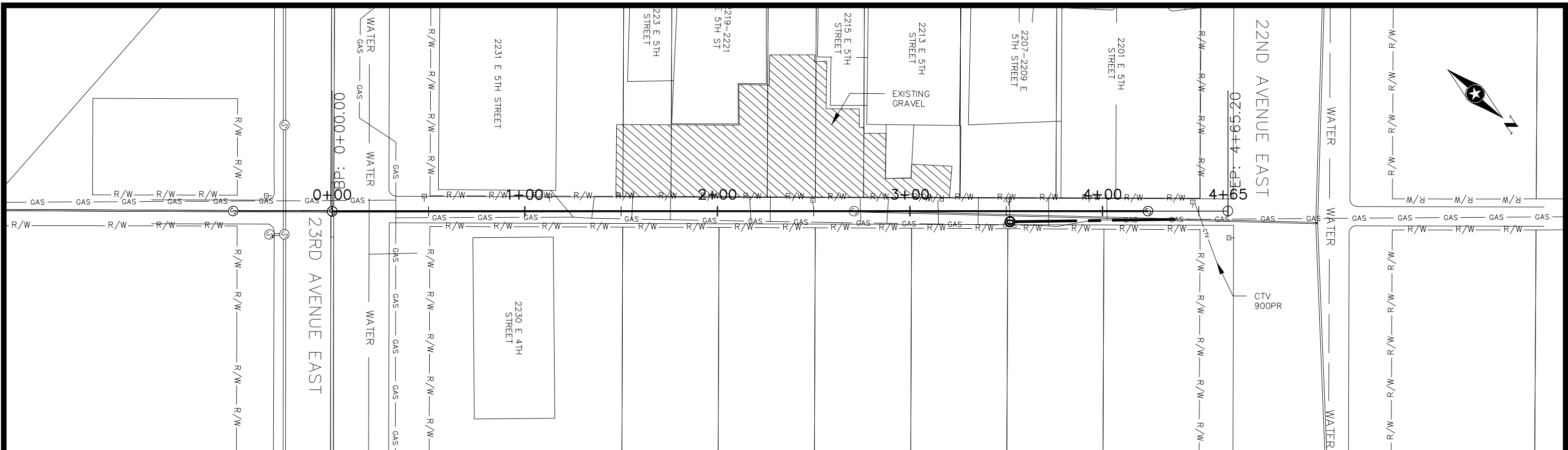
THE CONTRACTOR SHALL FIELD VERIFY THE LOCATION AND ELEVATION OF ALL CONTROL POINTS AND BENCHMARKS.

COORDINATES ARE BASED OFF OF THE WISCONSIN COUNTY COORDINATE SYSTEM FOR DOUGLAS COUNTY

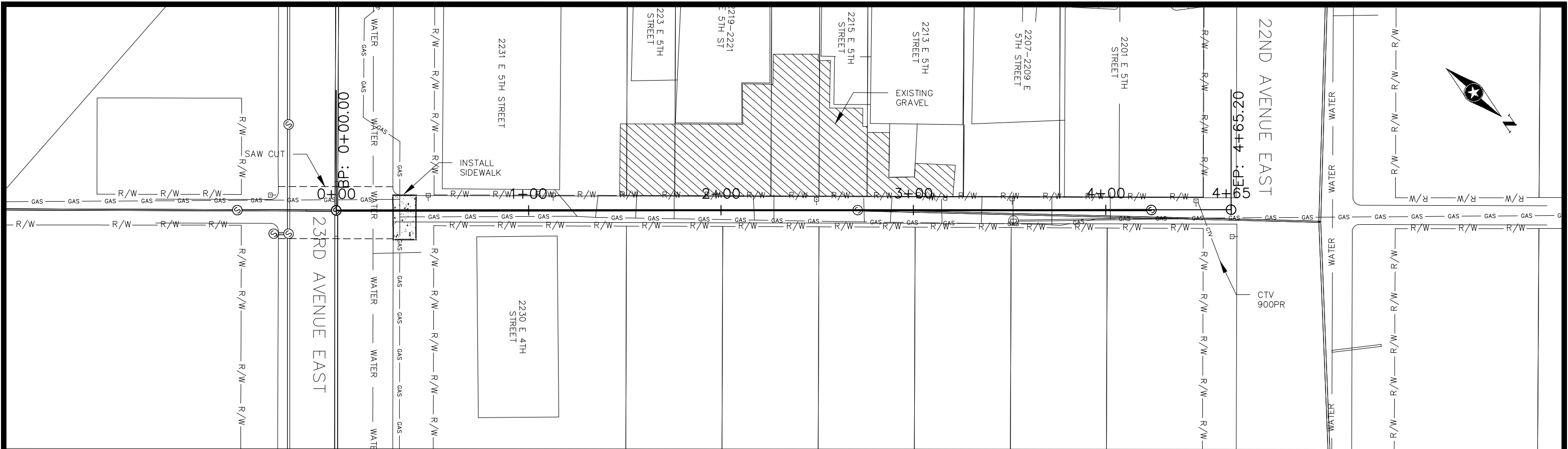




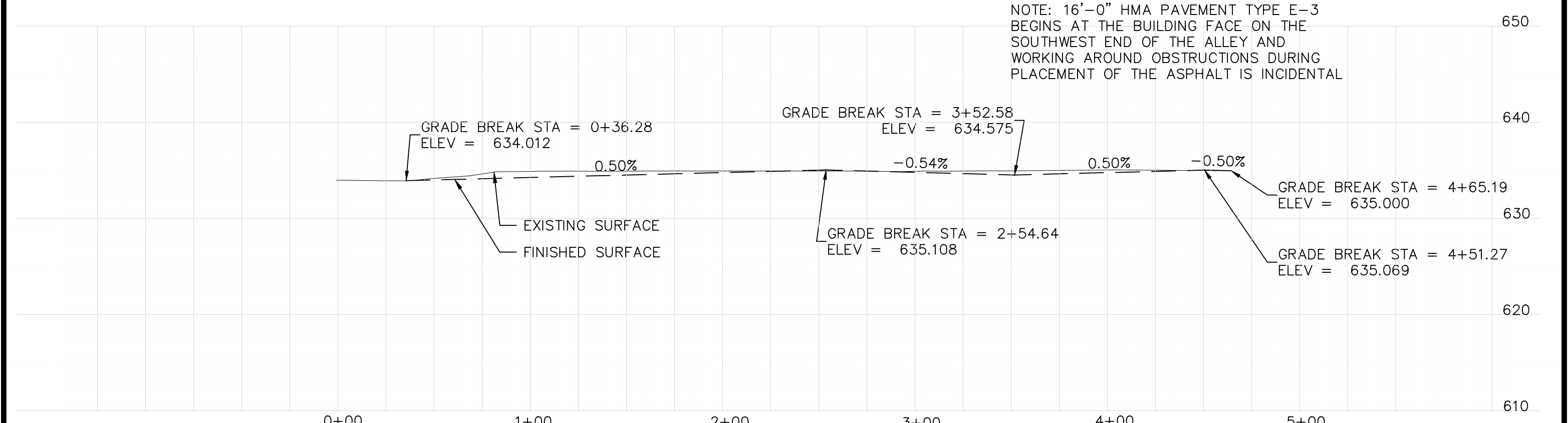
1"=50' HORZ.
1"=10' VERT.



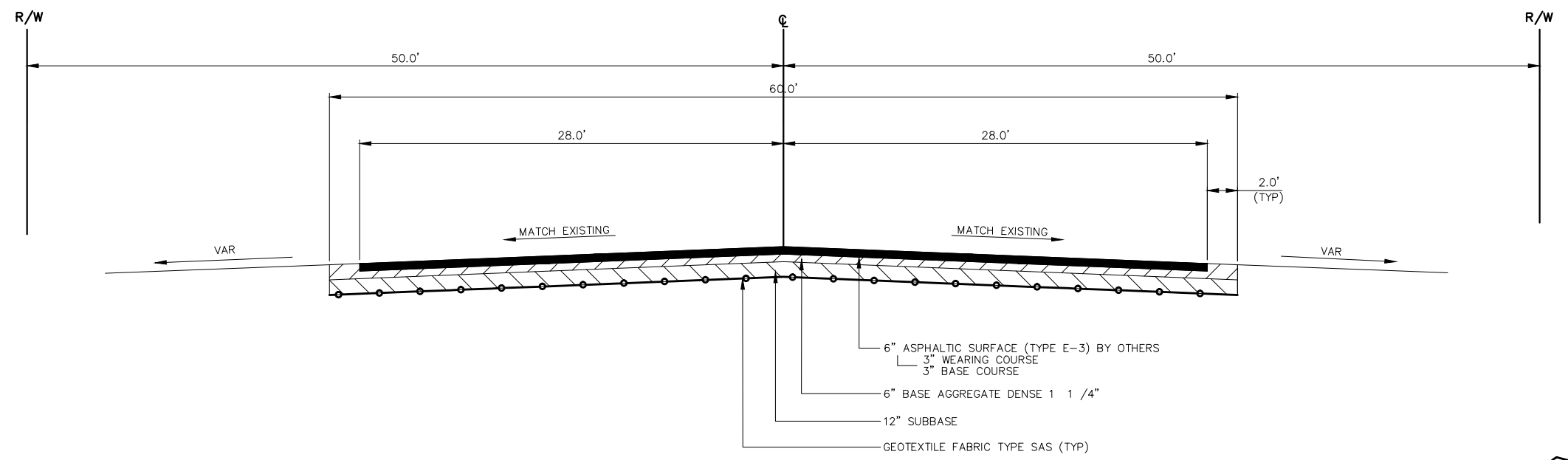
1"=50' HORZ.
1"=10' VERT.



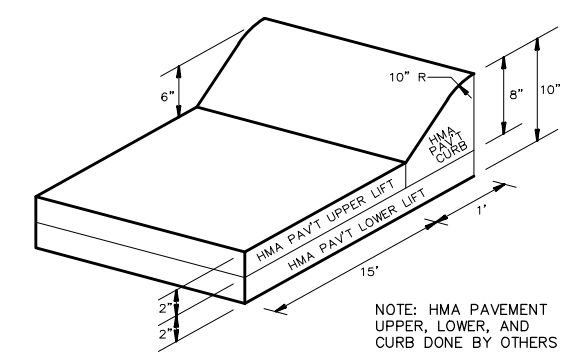
NOTE: 16'-0" HMA PAVEMENT TYPE E-3 BEGINS AT THE BUILDING FACE ON THE SOUTHWEST END OF THE ALLEY AND WORKING AROUND OBSTRUCTIONS DURING PLACEMENT OF THE ASPHALT IS INCIDENTAL



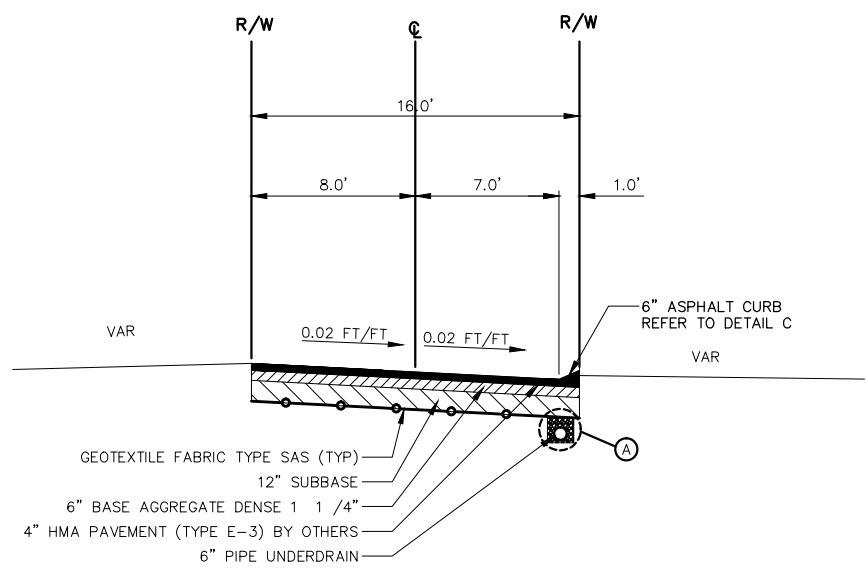
1"=50' HORZ.
1"=10' VERT.
SCALE 12.5 FEET



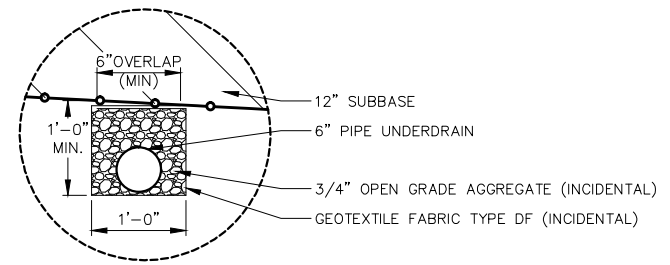
TYPICAL FINISHED SECTION
23TH AVENUE EAST
NOT TO SCALE



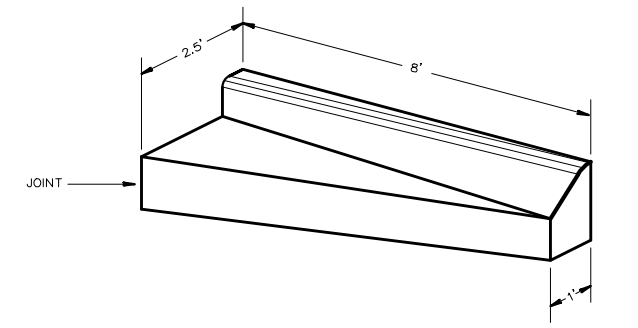
DETAIL C
ALLEY ASPHALTIC CURB
NOT TO SCALE



TYPICAL FINISHED SECTION
NORTHWEST SOUTHEAST ALLEY
NOT TO SCALE

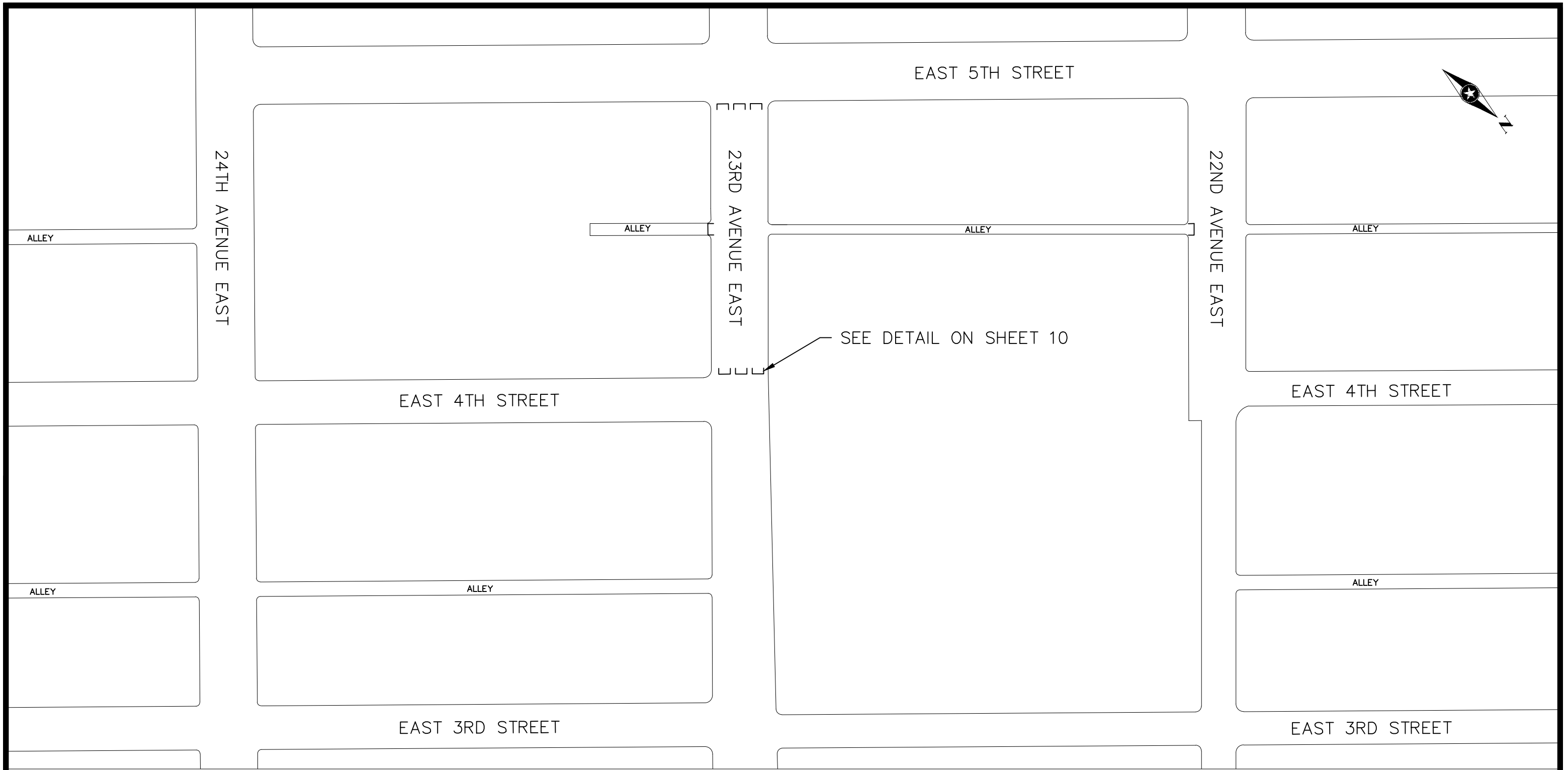


DETAIL A
PIPE UNDERDRAIN
NOT TO SCALE

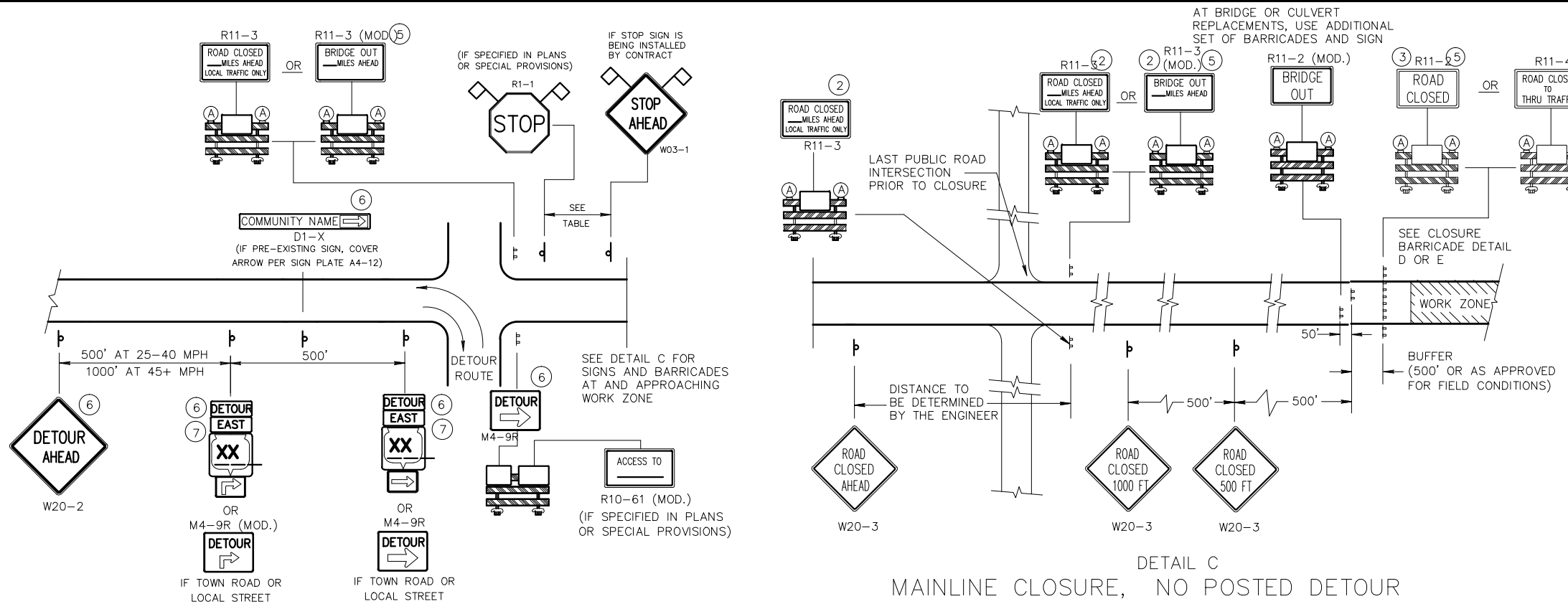


DETAIL B
ASPHALT CURB TRANSITION DETAIL
NOT TO SCALE

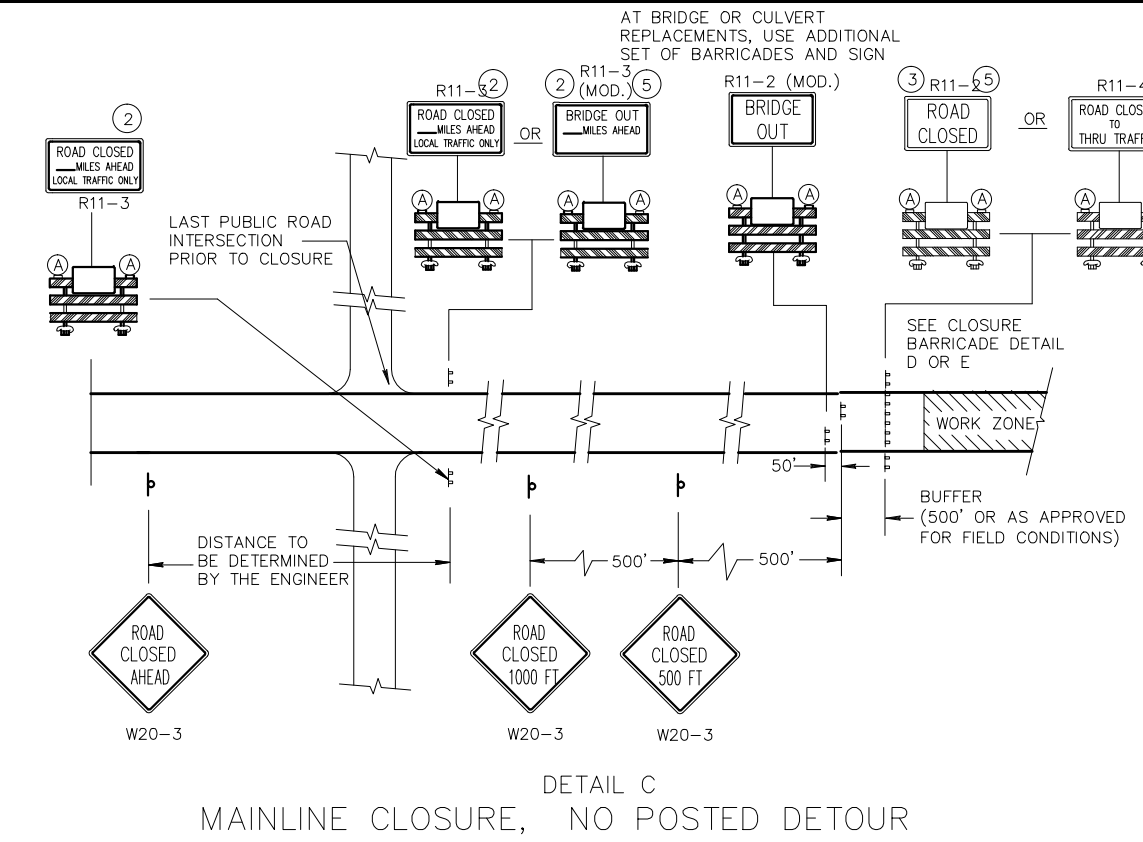




NOTES:
 THE EXACT NUMBER, LOCATION AND SPACING OF ALL SIGNS ARE APPROXIMATE AND SHALL BE ADJUSTED TO FIT FIELD CONDITIONS.
 DURING HOURS OF DARKNESS ALL BARRICADES USED TO SHIELD A HAZARD SHALL BE EQUIPPED WITH WARNING LIGHTS, TYPE A.
 UNLESS OTHERWISE NOTED, THE CONTRACTOR SHALL MAINTAIN ACCESS TO ALL DRIVEWAYS AT ALL TIMES DURING CONSTRUCTION.
 "WO" SIGNS ARE THE SAME AS "W" SIGNS EXCEPT THE BACKGROUND IS ORANGE
 "MO" SIGNS ARE THE SAME AS "M" SIGNS EXCEPT THE BACKGROUND IS ORANGE.
 ALL SIGNS OR PAVEMENT MARKING, TEMPORARY OR EXISTING, WHICH MAY CONFLICT WITH THE CONSTRUCTION TRAFFIC PATTERN SHALL BE REMOVED OR COVERED.



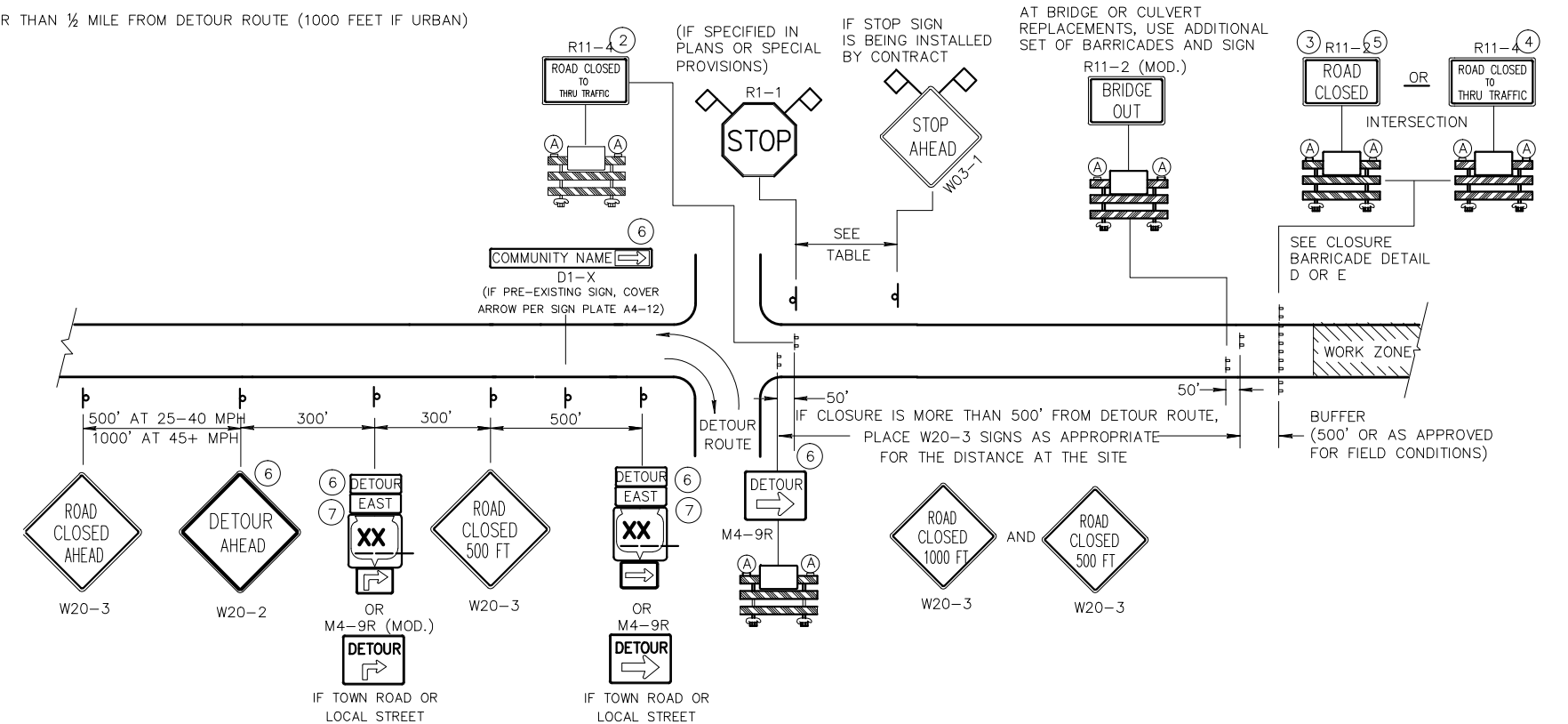
DETAIL A
 MAINLINE CLOSURE WITH POSTED DETOUR
 WORK ZONE GREATER THAN 1/2 MILE FROM DETOUR ROUTE (1000 FEET IF URBAN)



DETAIL C
 MAINLINE CLOSURE, NO POSTED DETOUR

SPEED LIMIT (MPH)	"STOP AHEAD" ADVANCE WARNING DISTANCE (FT)
25	200
30	200
35	350
40	350
45	500
50	550
55	750

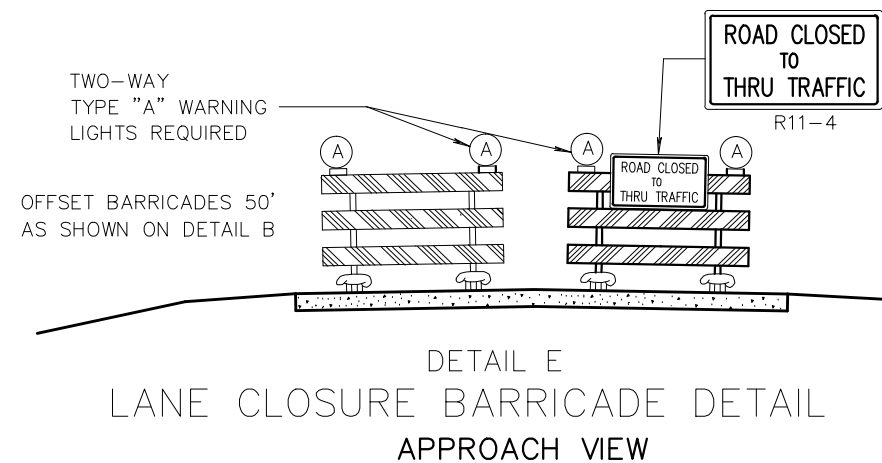
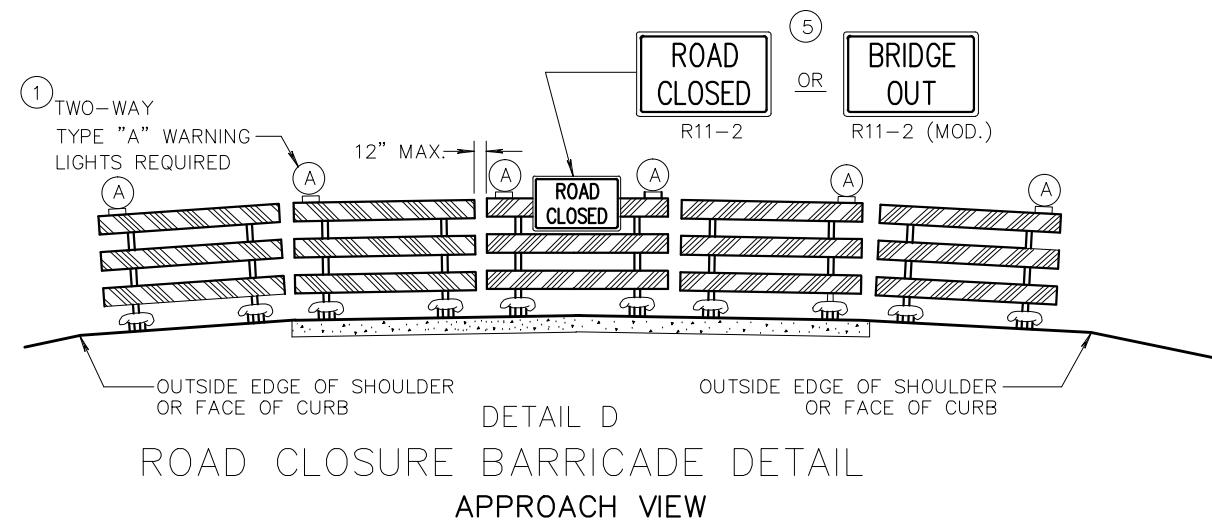
SEE SDD 15C2-4b
 FOR GENERAL NOTES
 AND FOOTNOTES ① THROUGH ⑦



DETAIL B
 MAINLINE CLOSURE WITH POSTED DETOUR
 WORK ZONE LESS THAN 1/2 MILE FROM DETOUR ROUTE (1000 FEET IF URBAN)

LEGEND

- ⌋ POST MOUNTED SIGN
- ⌋ TYPE III BARRICADES
- Ⓐ TYPE "A" LOW INTENSITY FLASHING WARNING LIGHT (FOR NIGHT USE)
- ▨ WORK ZONE
- DETOUR EAST M4-8
M3-X
- XX OR COUNTY XX OR XX
M1-4 M1-5A M1-6
- ↪ OR ↪
M05-1 M06-1
- ◇ FLAGS, 16" X 16" MIN., (ORANGE)



SEE SDD 15C2-4d FOR LEGEND

GENERAL NOTES

THE EXACT NUMBER, LOCATION, AND SPACING OF ALL SIGNS AND BARRICADES SHALL BE ADJUSTED TO FIT FIELD CONDITIONS AS APPROVED BY THE ENGINEER.

ANY SIGNS TEMPORARY OR EXISTING, WHICH CONFLICT WITH TRAFFIC CONTROL "IN USE" SHALL BE REMOVED OR COVERED AS NEEDED AND AS APPROVED BY THE ENGINEER.

THE SPACING BETWEEN TRAFFIC CONTROL SIGNS SHOULD BE ADJUSTED TO NOT CONFLICT WITH AND SHOULD PROVIDE A DESIRABLE MINIMUM OF 200 FEET CLEARANCE TO EXISTING SIGNS THAT WILL REMAIN IN PLACE.

BARRICADES THAT MUST BE MOVED FOR A WORK OPERATION SHALL BE IMMEDIATELY RE-ESTABLISHED UPON COMPLETION OF THE OPERATION OR, FOR CONTINUING OPERATIONS, AT THE END OF EACH WORKING DAY.

SIGNS THAT WILL BE IN PLACE LESS THAN 7 CONTINUOUS DAYS AND NIGHTS MAY BE MOUNTED ON PORTABLE SUPPORTS.

ALL TYPE III BARRICADES SHALL HAVE RAILS REFLECTORIZED ON BOTH FACES. STRIPES SHALL BE PROPERLY SLOPED DOWN TOWARD THE TRAFFIC SIDE OR AS SHOWN IN THE ROAD CLOSURE BARRICADE DETAIL D FOR FULL ROAD CLOSURES.

TYPE "A" LOW-INTENSITY FLASHING WARNING LIGHTS SHALL BE VISIBLE ON BOTH SIDES OF THE BARRICADE.

THE R11-2, R11-3, M4-9, R11-4 AND R10-61 SIGNS PLACED ON BARRICADES SHALL COVER NO MORE THAN THE TOP RAIL. THE SIGNS SHALL NOT COVER ANY PORTION OF THE MIDDLE OR BOTTOM RAILS.

THE REFLECTIVE SHEETING USED ON R11-2, R11-3, R11-4, R10-61 AND R1-1 SIGNS SHALL COMPLY WITH SUBSECTION 637.2.2.2 OF THE STANDARD SPECIFICATIONS.

"WO AND "MO" SIGNS ARE THE SAME AS "W" AND "M" SIGNS EXCEPT THE BACKGROUND IS ORANGE.

ALL SIGNS SHALL BE 48" X 48" UNLESS OTHERWISE NOTED BELOW:

R11-2 SHALL BE 48" X 30".

R11-3, R11-4 AND R10-61 SHALL BE 60" X 30".

M4-9 SHALL BE 30" X 24".

M3-X AND M4-8 SHALL BE 24" X 12". (30" X 15" IF NEEDED TO MATCH EXISTING SIGNS.)

M1-4, M1-5A, AND M1-6 SHALL BE 24" X 24". (36" X 36" IF NEEDED TO MATCH EXISTING SIGNS.)

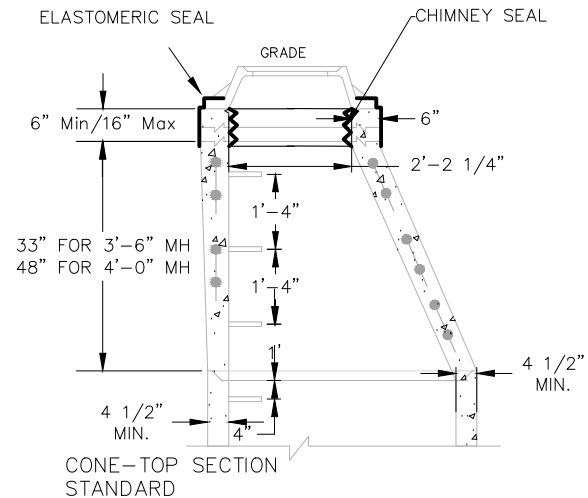
M05-1 AND M06-1 SHALL BE 21" X 21". (30" X 30" IF NEEDED TO MATCH EXISTING SIGNS.)

D1-X SHALL BE AS SHOWN ON SPECIFIC PROJECT SIGNING DETAIL SHEETS.

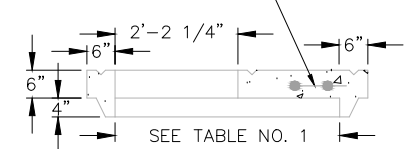
R1-1 SHALL BE 36" X 36".

- ① TWO WARNING LIGHTS SHALL BE PROVIDED ON THE CENTER BARRICADE AND A MINIMUM OF ONE WARNING LIGHT SHALL BE PROVIDED ON EACH OF THE OTHER BARRICADES WITHIN THE ROADWAY LIMITS. SPACING OF THE WARNING LIGHTS SHALL BE UNIFORM TO THE EDGE OF ROADWAY AS SHOWN (APPROX. 8-FOOT LIGHT SPACING).
- ② THESE SIGNS AND BARRICADES ARE NOT REQUIRED IF ROAD CLOSURE BEGINS AT INTERSECTION.
- ③ FOR ROAD CLOSURE WITHOUT LOCAL ACCESS TO PROJECT, SEE ROAD CLOSURE BARRICADE DETAIL D.
- ④ FOR ROAD CLOSURE WITH LOCAL ACCESS TO PROJECT, SEE LANE CLOSURE BARRICADE DETAIL E.
- ⑤ FOR BRIDGE OR CULVERT REPLACEMENTS, SUBSTITUTE "BRIDGE OUT" INSTEAD OF "ROAD CLOSED" ON R11-2 AND R11-3 SIGNS.
- ⑥ INSTALL DETOUR AND COMMUNITY GUIDE SIGNS AND ARROWS ONLY IF SPECIFIED IN THE CONTRACT. IF THERE ARE EXISTING ROUTE MARKER ASSEMBLIES THAT WILL REMAIN IN PLACE, ADJUST THE LOCATION OF THE DETOUR ROUTE SIGNS TO CORRESPOND WITH THE EXISTING ASSEMBLIES. MODIFY EXISTING SIGNS WHERE POSSIBLE. SEE SPECIFIC PROJECT DETOUR SIGNING DETAIL SHEETS. IF DETOUR SIGNS ARE BEING INSTALLED BY OTHERS, PLACE THE CONTRACTED TRAFFIC CONTROL SIGNS TO ALLOW FOR PLACEMENT OF ALL WARNING, DETOUR AND GUIDE SIGNS AS SHOWN.
- ⑦ "EAST" CARDINAL DIRECTION MARKERS AND RIGHT TURN ARROWS ARE SHOWN. USE OTHER CARDINAL DIRECTIONS AND ARROWS AS APPROPRIATE.

PRECAST MANHOLE DETAIL



REINFORCING STEEL



FLAT TOP SLAB (WHERE SPECIFIED)

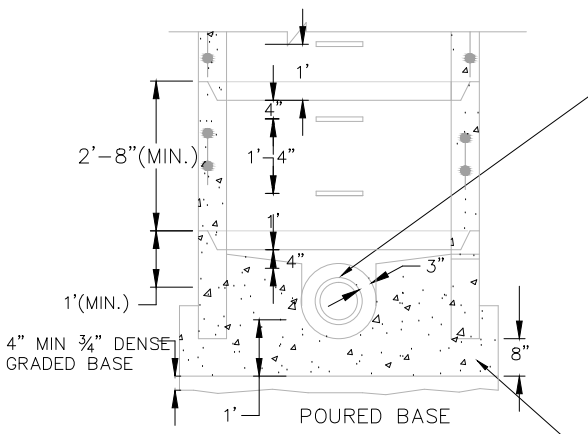
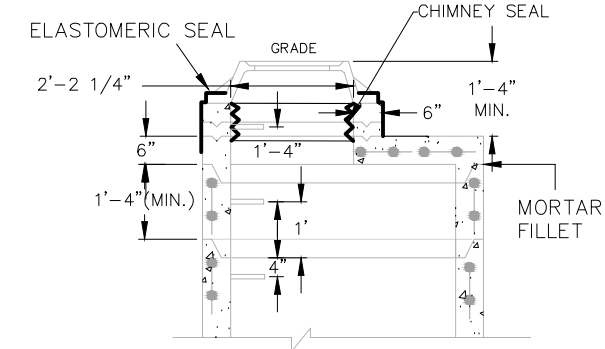
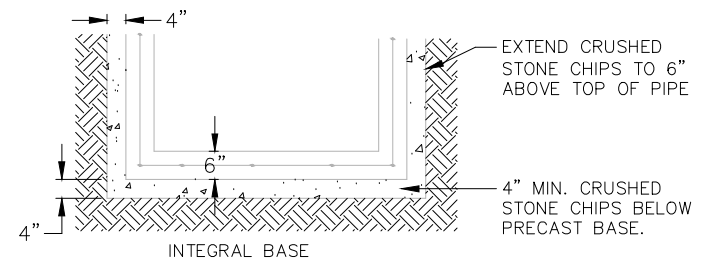


TABLE NO. 1

PIPE DIA	MANHOLE DIA	WALL THICKNESS
8" - 30"	4'-0"	5"
36"	5'-0"	6"
42"	6'-0"	7"

TYPE I FRAME/CHIMNEY JOINT REQUIRED ON ALL SANITARY MANHOLES UNLESS OTHERWISE SPECIFIED. ELASTOMERIC WATERPROOFING SEALER APPLIED TO EXTERIOR AND INTERIOR CHIMNEY SEAL.



FLAT TOP SLAB MAY ONLY BE USED FOR 5'-0" AND 6'-0" DIA. MANHOLES AND WITH PERMISSION OF PROJECT ENGINEER OR WHERE SHOWN ON THE PLANS.

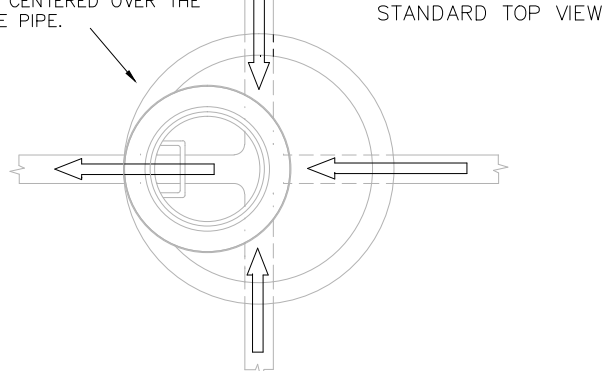
ADJUST FRAME TO GRADE WITH BRICK OR CONCRETE RINGS OF VARIABLE THICKNESS, MAXIMUM RING HEIGHT = 6", MINIMUM RING HEIGHT = 2". CONCRETE RINGS SHALL BE REINFORCED WITH ONE LINE OF STEEL CENTERED WITHIN THE RING. WHERE NECESSARY, RINGS SHALL BE GROOVED TO RECEIVE STEP. THE CHIMNEY SHALL BE CONSTRUCTED SO THAT AS FEW ADJUSTING RINGS AS POSSIBLE SHALL BE USED TO BRING MANHOLE TO GRADE.

CONCRETE AND STEEL REINFORCEMENT SHALL CONFORM TO DESIGNATION C-478 REQUIREMENTS OF ASTM SPECIFICATIONS.

JOINTS SHALL BE WATERTIGHT AND SHALL BE MADE USING BUTYL RUBBER GASKETS. ALL JOINTS SHALL CONFORM TO ASTM-C443 VARIATIONS IN DIAMETER, DEFECTIVE OR DAMAGED ENDS, OR OTHER CONDITIONS WHICH, IN THE OPINION OF THE PROJECT ENGINEER, PREVENT MAKING A SATISFACTORY JOINT SHALL BE CONSIDERED CAUSE FOR REJECTION.

AREA OF CIRCUMFERENTIAL STEEL = 0.12 SQ INCH PER LINEAL FOOT.

THE STEPS, FRAME, AND COVER SHALL BE CENTERED OVER THE DISCHARGE PIPE.



SPACE BETWEEN PIPE AND PRECAST MANHOLE WALL TO BE FILLED WITH BRICK MORTARED IN PLACE EXCEPT THAT AN APPROVED FLEXIBLE WATERTIGHT PIPE TO MANHOLE SEAL IS REQUIRED FOR ALL FLEXIBLE SANITARY SEWER CONNECTIONS. THE ANNULAR SPACE BETWEEN THE PIPE AND MANHOLE WALL SHALL BE FILLED WITH FLEXIBLE BUTYL RUBBER GASKET MATERIAL BELOW SURFACE OF BENCH SPRINGLINE.

4" MIN. 3/4" DENSE GRADED BASE UNDER CONCRETE BASE.

PRECAST BASE RISER SECTION WITH A SEPERATE PRECAST BASE SLAB SHALL NOT BE CONSIDERED GENERALLY ACCEPTABLE UNDER THIS SPECIFICATION.

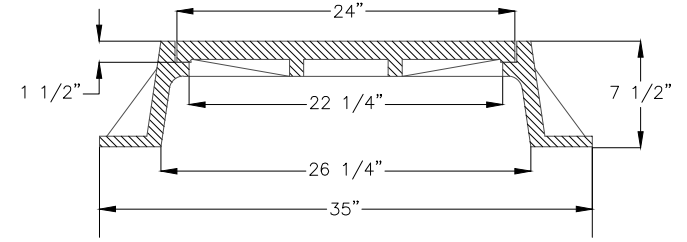
THE FLOW CHANNEL THROUGH MANHOLES SHALL BE MADE TO CONFORM TO THE SHAPE AND SLOPE OF THE SEWERS AND SHALL EXTEND VERTICALLY FROM THE SPRINGLINE TO THE CROWN OF THE DISCHARGE PIPE.

BENCH SLOPE { STORM MANHOLE 1" PER FOOT
SANITARY MANHOLE 2" PER FOOT

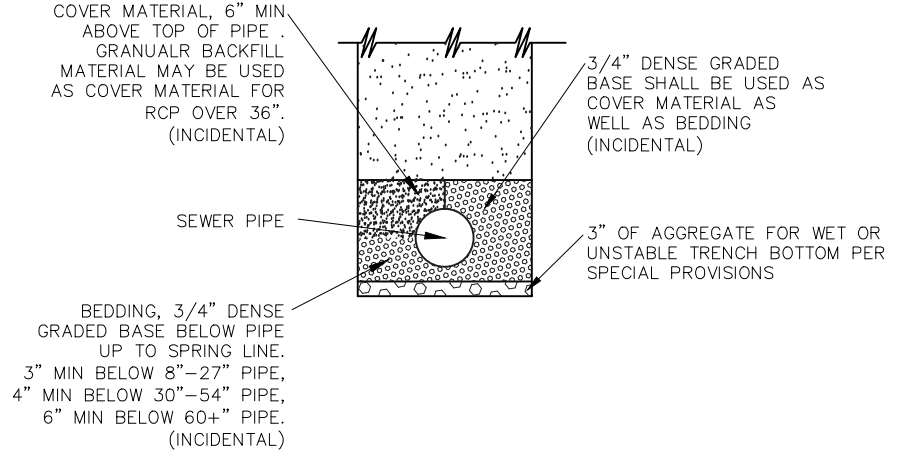
CLASS "D" CONCRETE, 12" MIN. BELOW BOTTOM OF PIPE

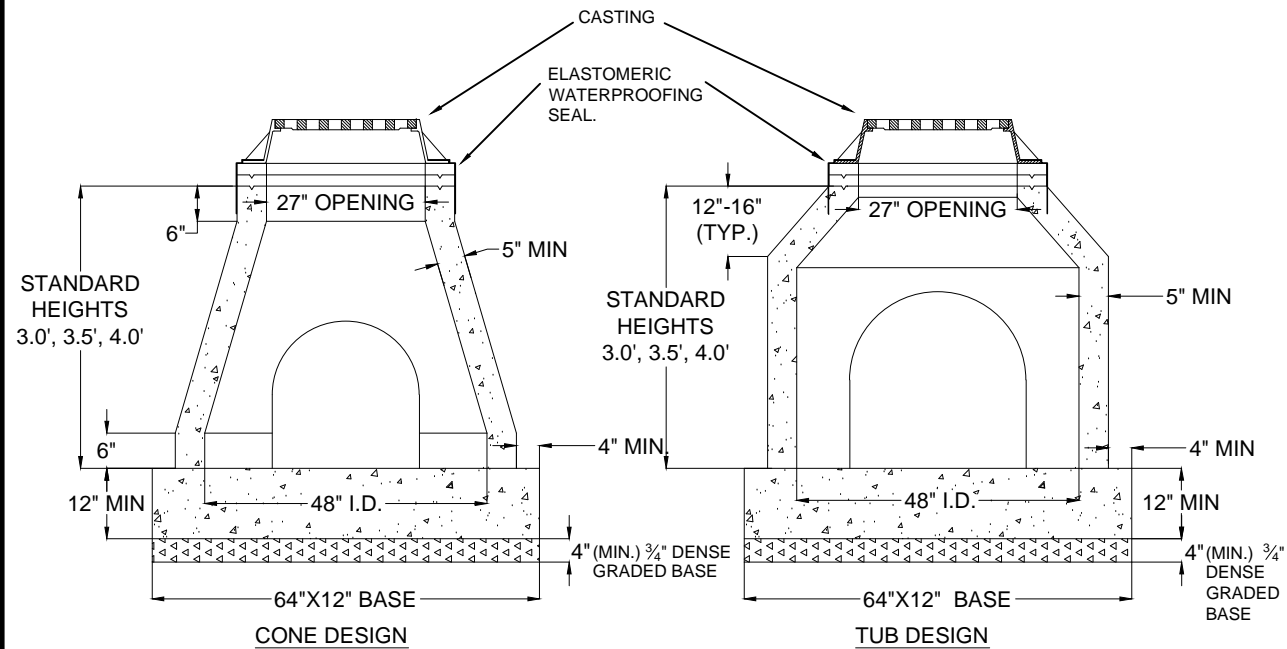
CASTING DIMENSIONS

MANHOLE CASTING DIMENSIONS



TYPICAL TRENCH BOTTOM DETAIL FOR SANITARY AND STORM PIPE





NOTE:
 1. PRECAST CATCH BASINS SHALL BE MANUFACTURED, REINFORCED, AND INSTALLED IN ACCORDANCE WITH SPECIFICATIONS FOR PRECAST MANHOLES.
 2. THE BASE SHALL BE INTEGRAL, FORMED AND POURED ON SITE, OR FURNISHED AS A SEPERATE PRECAST SECTION.
 3. INVERTS FOR BASINS FURNISHED WITH INTEGRAL BASES MAY BE PREFORMED OR POURED IN PLACE. THE INVERT SHALL BE POURED IN PLACE FOR POURED BASES AND FOR BASINS WITH SEPERATE PRECAST BASES.

DESIGN	HEIGHT	LARGEST ALLOWABLE PIPE SIZES		
		NUMBER OF OPENINGS		
		1 HOLE	2 HOLE	3 HOLE
CONE	3.0'	15" RCP	15" RCP @ 90°	15" RCP @ 90°
CONE	3.5'	15" RCP	15" RCP @ 90°	15" RCP @ 90°
CONE	4.0'	21" RCP	18" RCP @ 90°	15" RCP @ 90°
TUB	3.0'	18" RCP	18" RCP @ 90°	18" RCP @ 90°
TUB	3.5'	21" RCP	18" RCP @ 90°	18" RCP @ 90°
TUB	4.0'	27" RCP	18" RCP @ 90°	18" RCP @ 90°

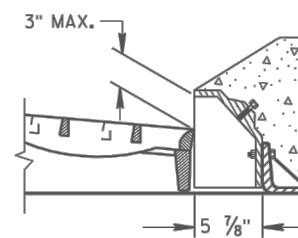
CATCH BASIN CONE DETAIL

GENERAL NOTES

DETAILS OF CONSTRUCTION, MATERIALS AND WORKMANSHIP NOT SHOWN ON THIS DRAWING SHALL CONFORM TO THE PERTINENT REQUIREMENTS OF THE STANDARD SPECIFICATIONS AND THE APPLICABLE SPECIAL PROVISIONS.

DETAIL DRAWINGS FOR PROPOSED ALTERNATE DESIGNS FOR INLET COVERS SHALL BE SUBMITTED TO THE ENGINEER FOR APPROVAL PROVIDING THAT SUCH ALTERNATE DESIGNS MAKE PROVISION FOR EQUIVALENT CAPACITY AND STRENGTH.

THE ACTUAL WEIGHT OF COVERS MAY VARY WITHIN 5 PERCENT, PLUS OR MINUS, OF THE APPROXIMATE WEIGHT.

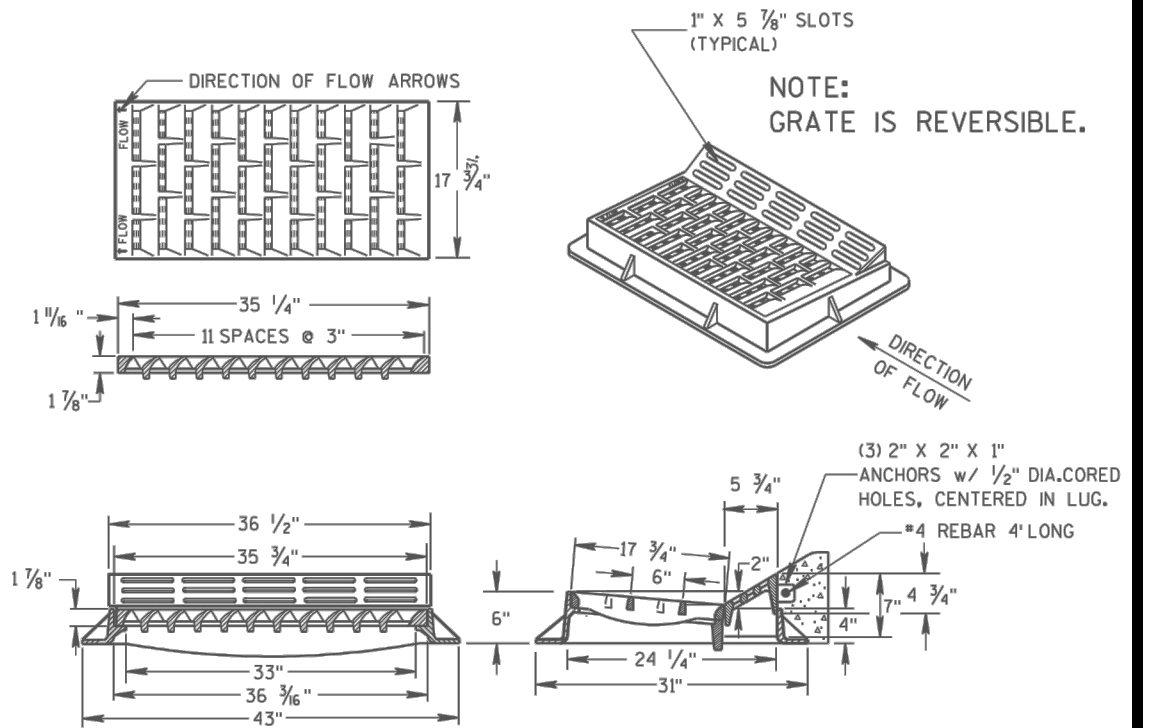


ALTERNATIVE CURB BOX FOR TYPE "HM" COVER

(APPROXIMATE WEIGHT CURB BOX 68 LBS.)

USE WITH TYPES G & J CONCRETE CURB & GUTTER, 30 INCH NOTED AS TYPE HM-GJ ON DRAINAGE TABLE

NOTE:
 SPECIAL GRATE FOR THE TYPE "H" COVER MAY ALSO BE USED FOR THE TYPE "HM-GJ" COVER NOTED AS TYPE HM-GJ-S ON DRAINAGE TABLE



TYPE "HM"

(APPROXIMATE WEIGHT 414 LBS.)
 FRAME..... 181 LBS.
 GRATE..... 159 LBS.
 CURB BOX..... 74 LBS.

NOTE:
 SPECIAL GRATE FOR THE TYPE "H" COVER MAY ALSO BE USED FOR THE TYPE "HM" COVER NOTED AS TYPE HM-S ON DRAINAGE TABLE

USE WITH TYPES A & D CONCRETE CURB & GUTTER, 36 INCH.

INLET COVER TYPE HM

CONCRETE COLLAR DETAIL FOR 8"-42" PIPE

