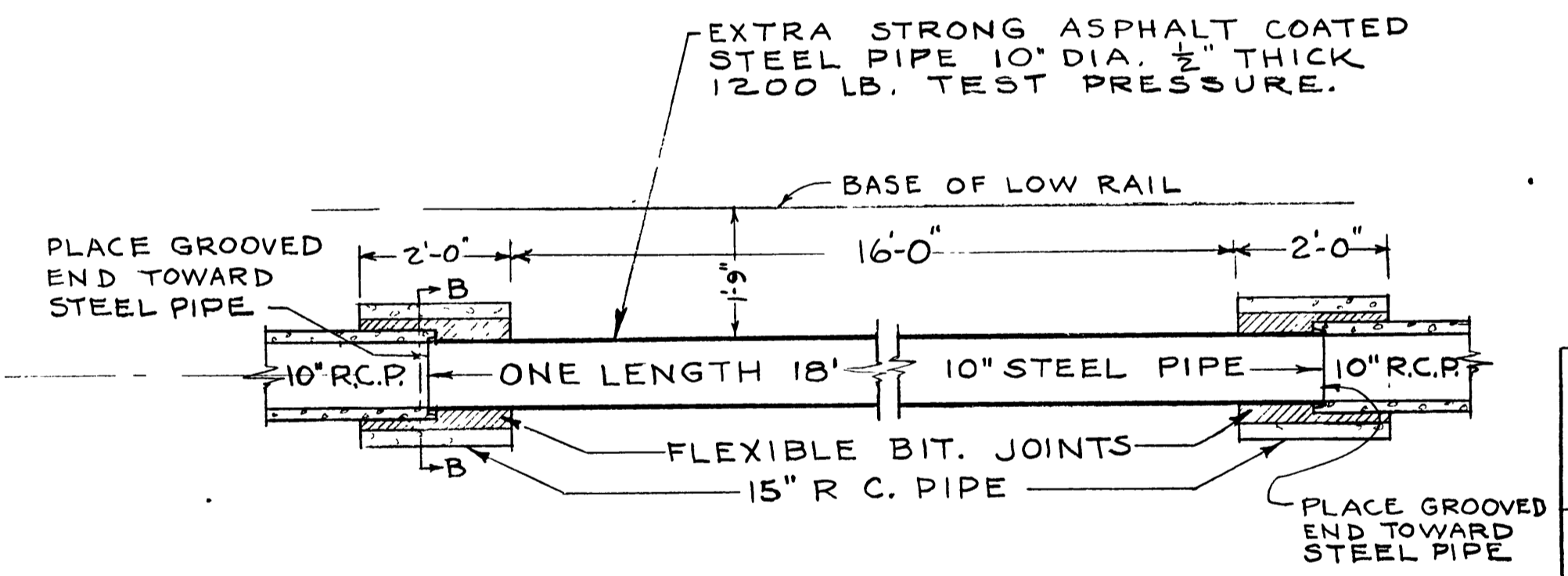
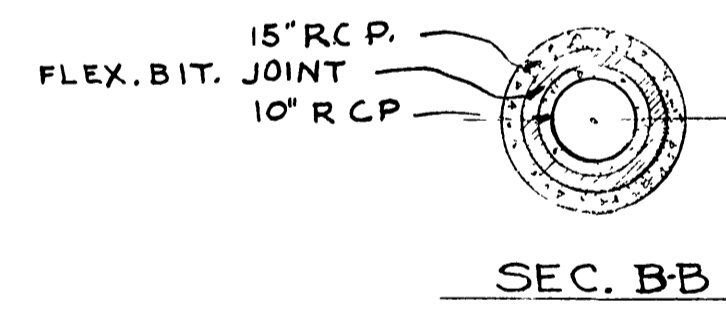
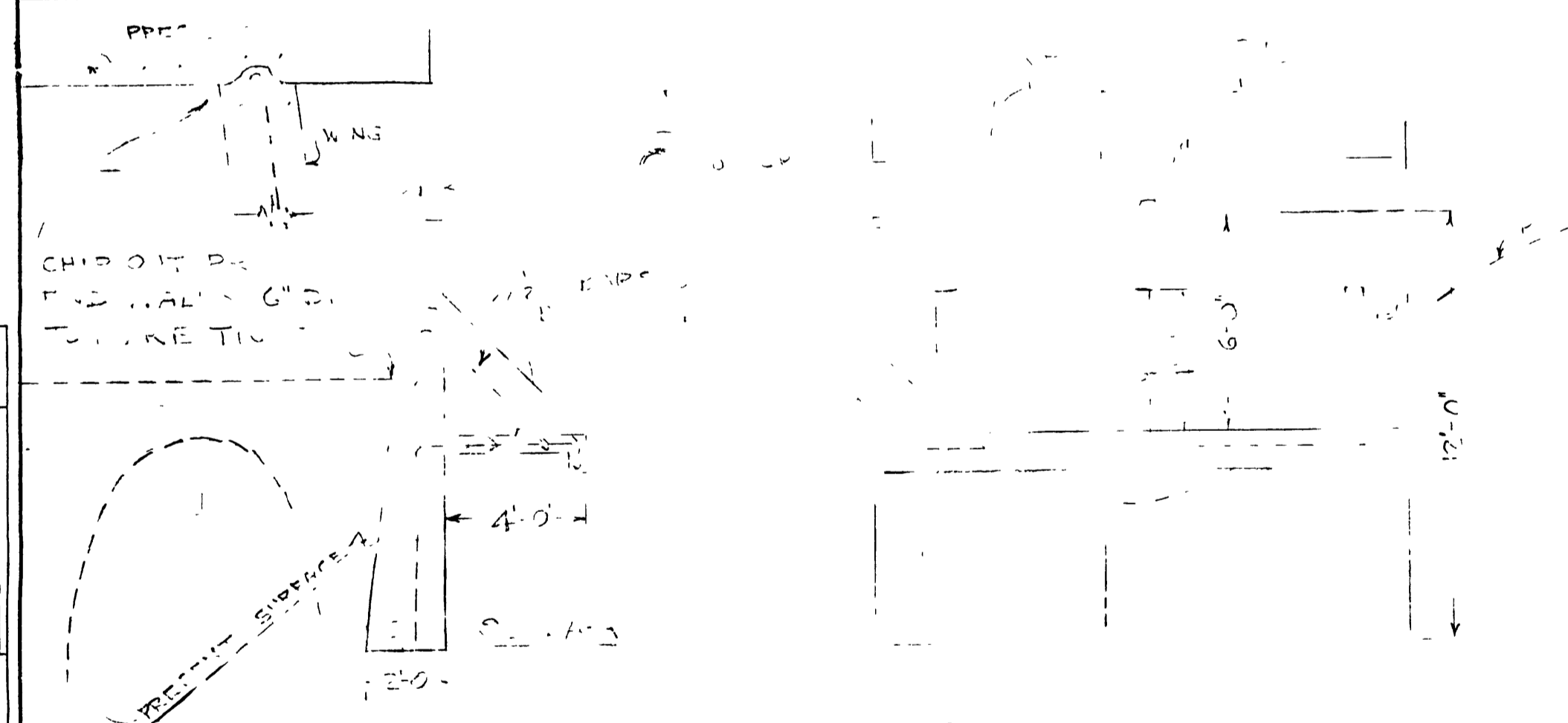
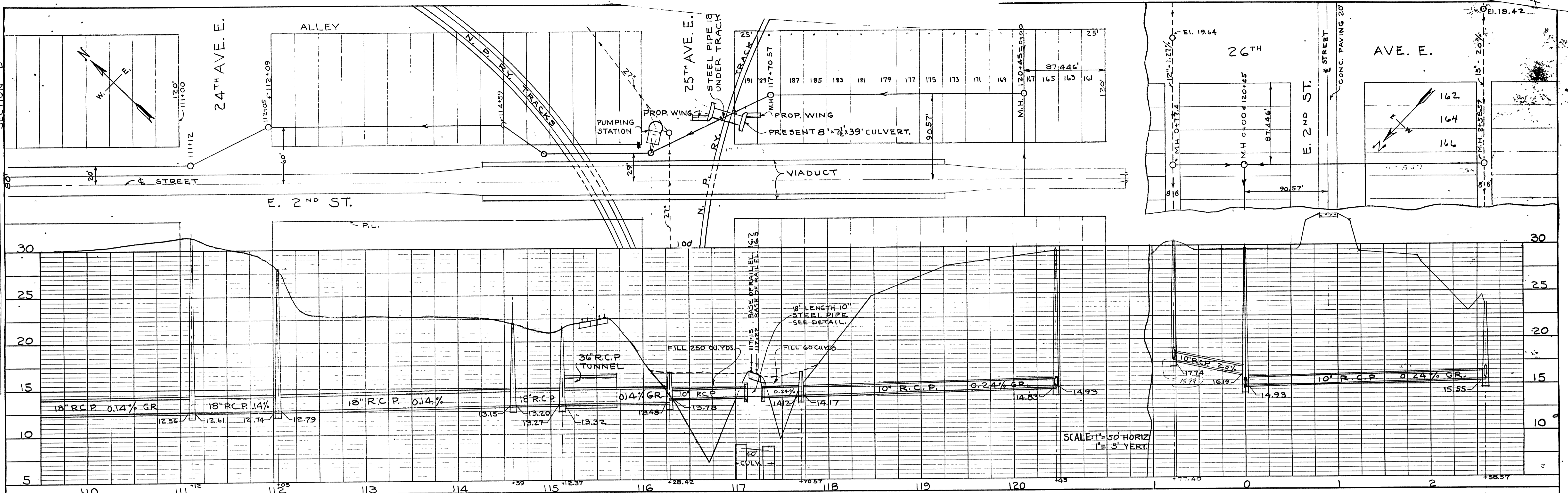


CITY OF SUPERIOR
 ENGINEERING DEPARTMENT
 T.M. BASTERASH - CITY ENGINEER
 INTERCEPTING SEWER
 SECTION "D"

DATE: 4/18/39
 BY: W.H.W.
 CHECKED: W.H.W.
 SURVEYED: W.H.W.
 PLOTTED: W.H.W.
 NOTE BOOK NO. 11112

DATE: 4/18/39
 BY: W.H.W.
 CHECKED: W.H.W.
 SURVEYED: W.H.W.
 PLOTTED: W.H.W.
 NOTE BOOK NO. 11112



STEEL PIPE UNDER TRACK
 1/2" = 1'-0"

REVISED 4/18/39
 INTERCEPTING SEWER
 24TH AVE. E. TO 26TH AVE. E.
 ON E. 2ND ST.
 PORTION OF SECTION "D"
 CITY OF SUPERIOR
 ENGINEERING DEPARTMENT
 T.M. BASTERASH - CITY ENGINEER
 MARCH 10, 1939
 SCALE: 1" = 50 FT. HORIZ 1" = 5 FT. VERT.
 DRN BY W.H.W. DES. H.P. APP. T.M.B.
 FILE NO.