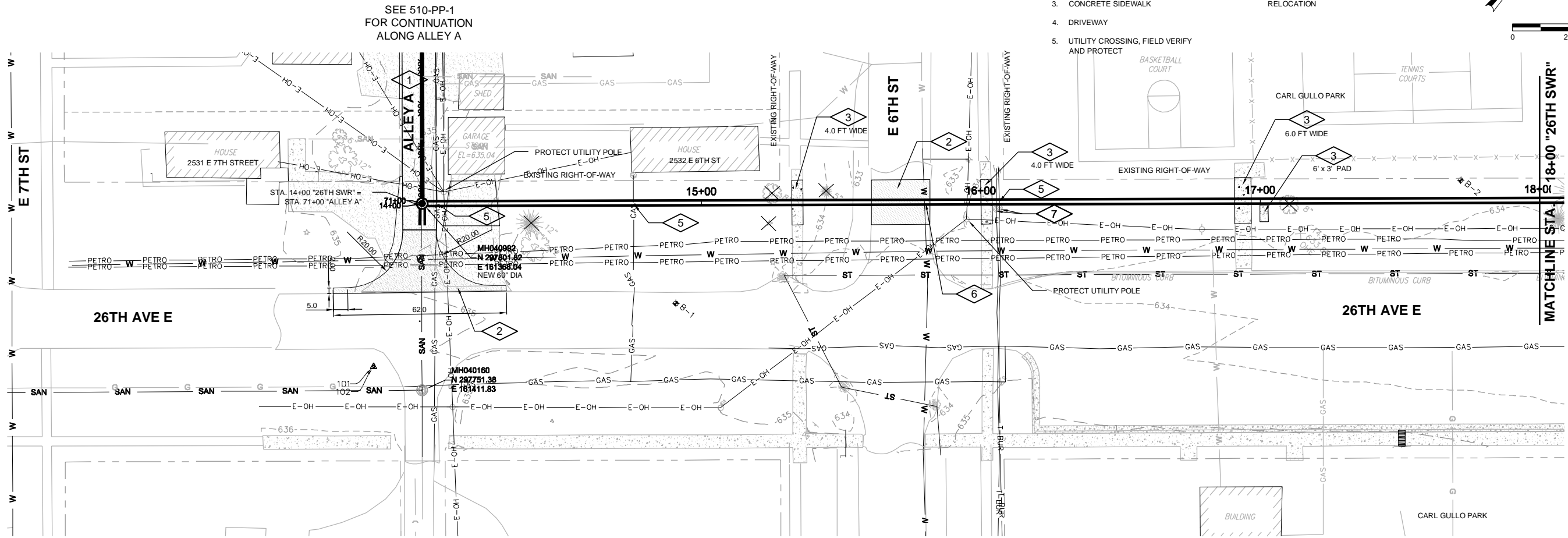
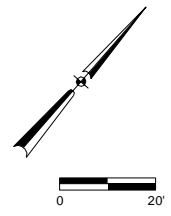


**GENERAL NOTES:**

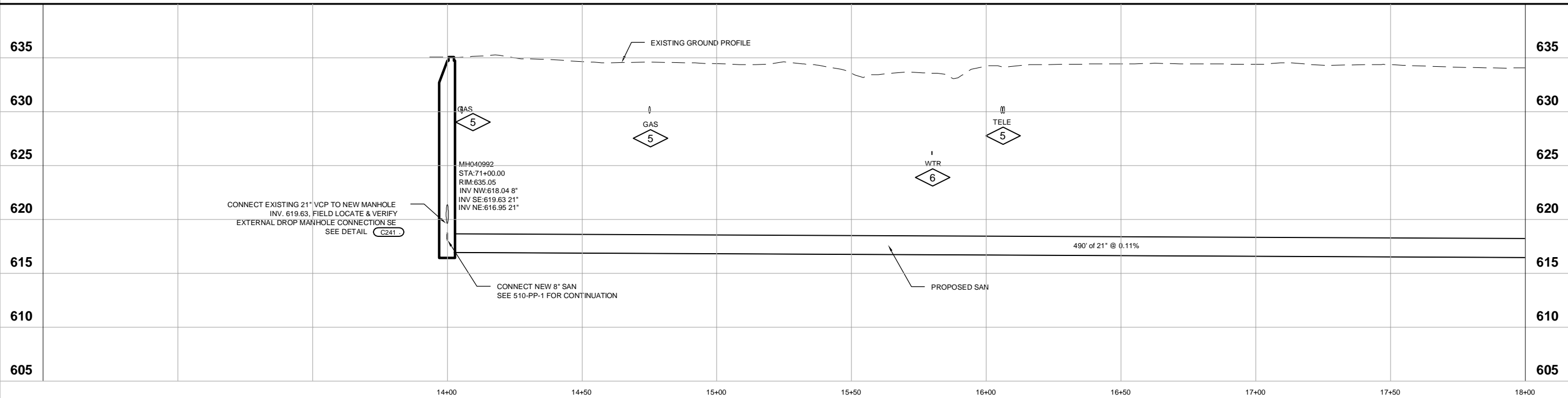
- 1. ALL DISTURBED AREAS NOT IDENTIFIED ON THE PLANS SHALL BE RESTORED TO MATCH EXISTING CONDITIONS

**PLAN NOTES:**

- 1. GRAVEL PAVEMENT
- 2. BITUMINOUS PAVEMENT
- 3. CONCRETE SIDEWALK
- 4. DRIVEWAY
- 5. UTILITY CROSSING, FIELD VERIFY AND PROTECT
- 6. UTILITY CROSSING WATER, FIELD VERIFY AND PROTECT.
- 7. UTILITY PEDESTAL, COORDINATE RELOCATION



| CONTROL POINTS |             |             |           |                 |
|----------------|-------------|-------------|-----------|-----------------|
| Point #        | Northing    | Easting     | Elevation | Raw Description |
| 101            | 297746.4440 | 161393.1790 | 635.481   | SETSPK          |
| 102            | 297746.4330 | 161393.1670 | 635.446   | SETSPK          |



| Revision Number | Revision Description | Date |
|-----------------|----------------------|------|
|                 |                      |      |
|                 |                      |      |
|                 |                      |      |
|                 |                      |      |
|                 |                      |      |
|                 |                      |      |
|                 |                      |      |
|                 |                      |      |
|                 |                      |      |
|                 |                      |      |

|              |              |
|--------------|--------------|
| Designed By  | TLW          |
| Drawn By     | SJB          |
| Checked By   | TLW          |
| Approved By  | SJK          |
| Filename     | 500-PP-1.DWG |
| Project No.  | 13241        |
| Project Date | 12/28/2017   |

CITY OF SUPERIOR, WISCONSIN  
 NEWTON CREEK AND NELSON CREEK TRUNK SEWERS  
 PLAN AND PROFILE (26TH AVENUE E)  
 STA 14+00 TO STA 18+00 "26TH SWR"

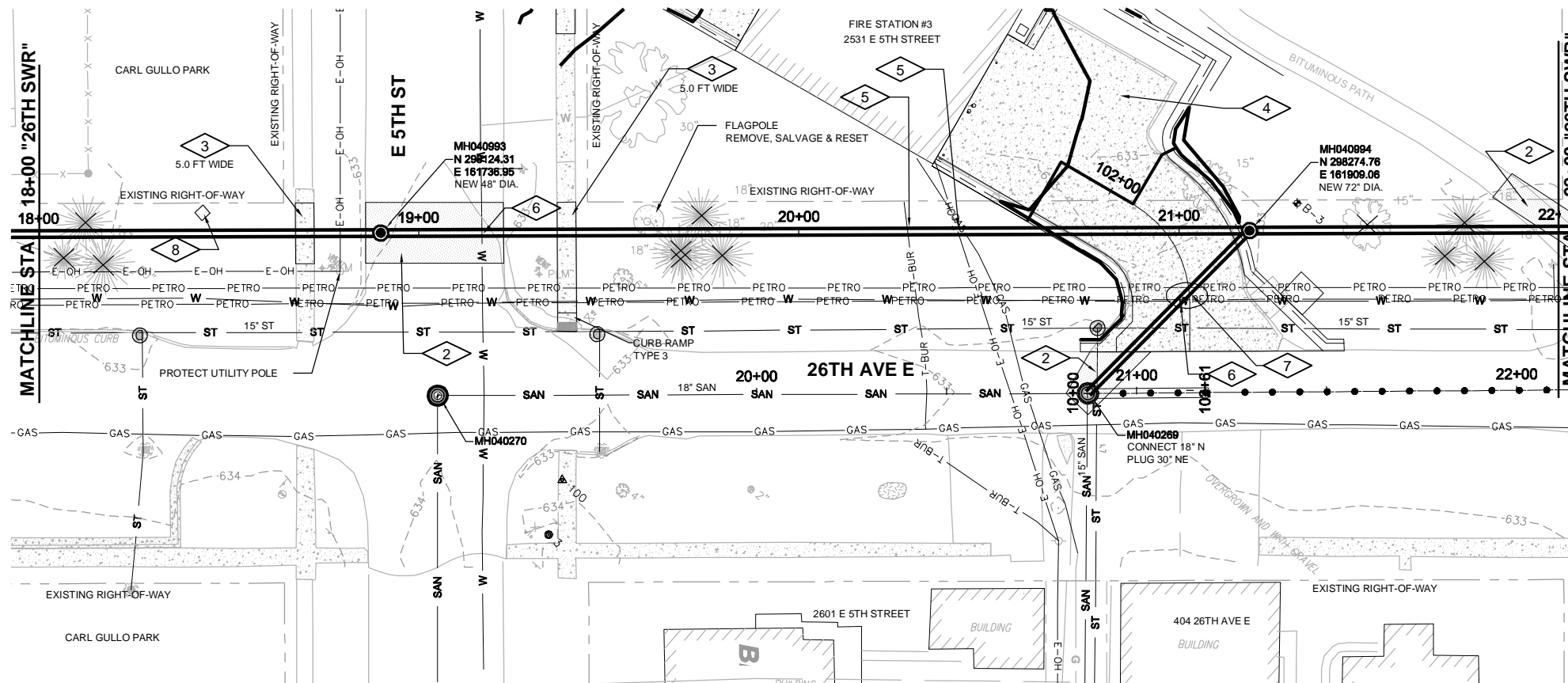
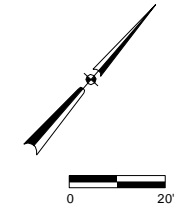
I:\PROJECTS\13241\DWG\500-PP-1.DWG

**GENERAL NOTES:**

1. ALL DISTURBED AREAS NOT IDENTIFIED ON THE PLANS SHALL BE RESTORED TO MATCH EXISTING CONDITIONS

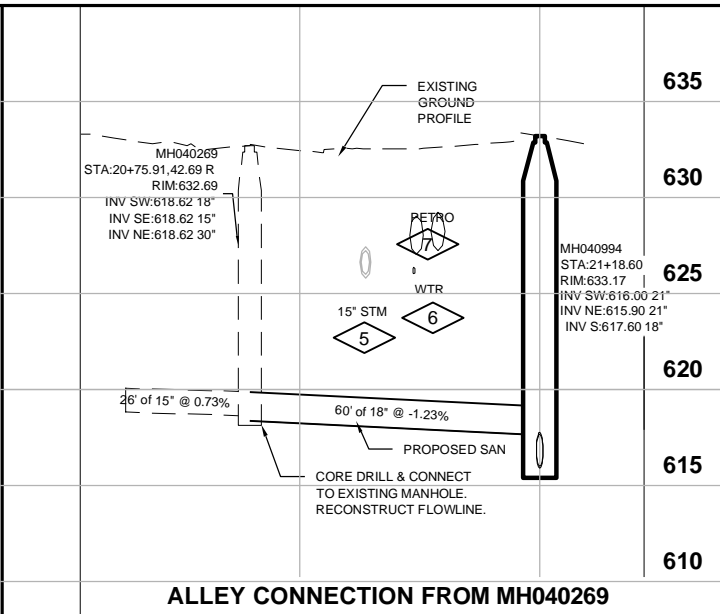
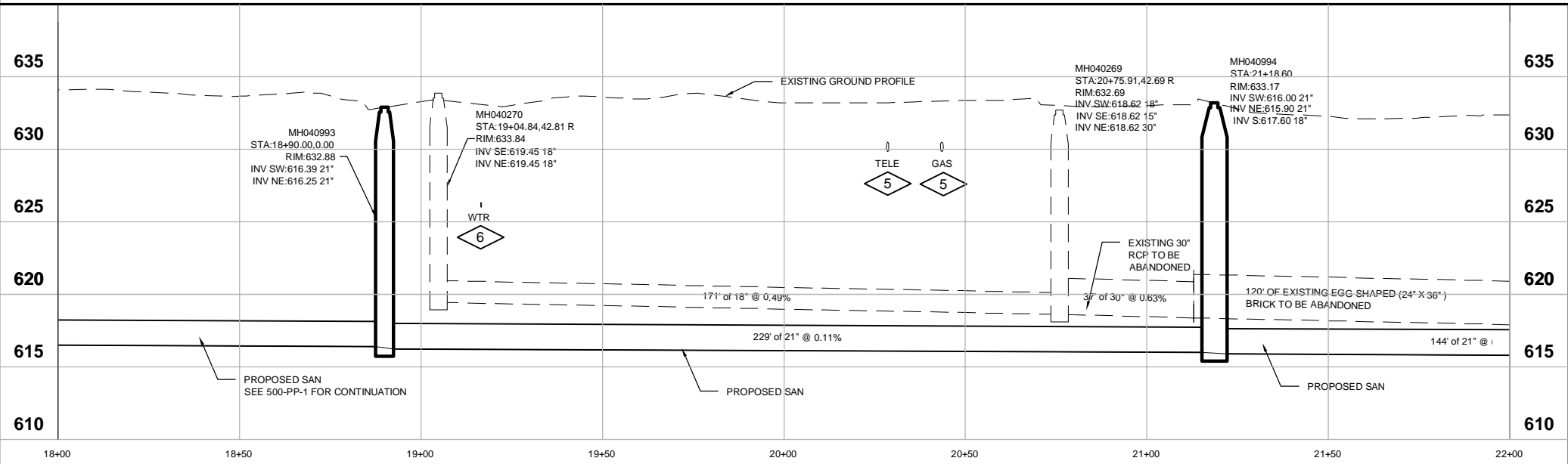
**PLAN NOTES:**

1. GRAVEL PAVEMENT
2. BITUMINOUS PAVEMENT PATCH
3. CONCRETE SIDEWALK
4. DRIVEWAY, SEE 500-D-2
5. UTILITY CROSSING, FIELD VERIFY AND PROTECT
6. UTILITY CROSSING WATER, FIELD VERIFY AND PROTECT
7. UTILITY CROSSING, PETROLEUM (2 LINES), FIELD VERIFY AND PROTECT
8. PARK MONUMENT, SEE 500-R-1



| CONTROL POINTS |             |             |           |                 |
|----------------|-------------|-------------|-----------|-----------------|
| Point #        | Northing    | Easting     | Elevation | Raw Description |
| 100            | 298106.5700 | 161815.6280 | 633.706   | SETPK           |

| BENCHMARKS |             |             |           |                 |
|------------|-------------|-------------|-----------|-----------------|
| Point #    | Northing    | Easting     | Elevation | Raw Description |
| 3          | 298093.3950 | 161822.3380 | 633.165   | 3093-39         |



| Revision Number | Revision Description | Date |
|-----------------|----------------------|------|
|                 |                      |      |
|                 |                      |      |
|                 |                      |      |
|                 |                      |      |
|                 |                      |      |

|              |              |
|--------------|--------------|
| Designed By  | TLW          |
| Drawn By     | SJB          |
| Checked By   | TLW          |
| Approved By  | SJK          |
| Filename     | 500-PP-1.DWG |
| Project No.  | 13241        |
| Project Date | 12/28/2017   |

**CITY OF SUPERIOR, WISCONSIN**  
**NEWTON CREEK AND NELSON CREEK TRUNK SEWERS**  
**PLAN AND PROFILE (26TH AVENUE E)**  
**STA 18+00 TO STA 22+00 "26TH SWR"**

**DONOHUE**

Sheet No. **27**

Drawing No. **500-PP-2**

I:\PROJECTS\13241\DWG\500-PP-1.DWG

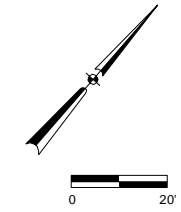
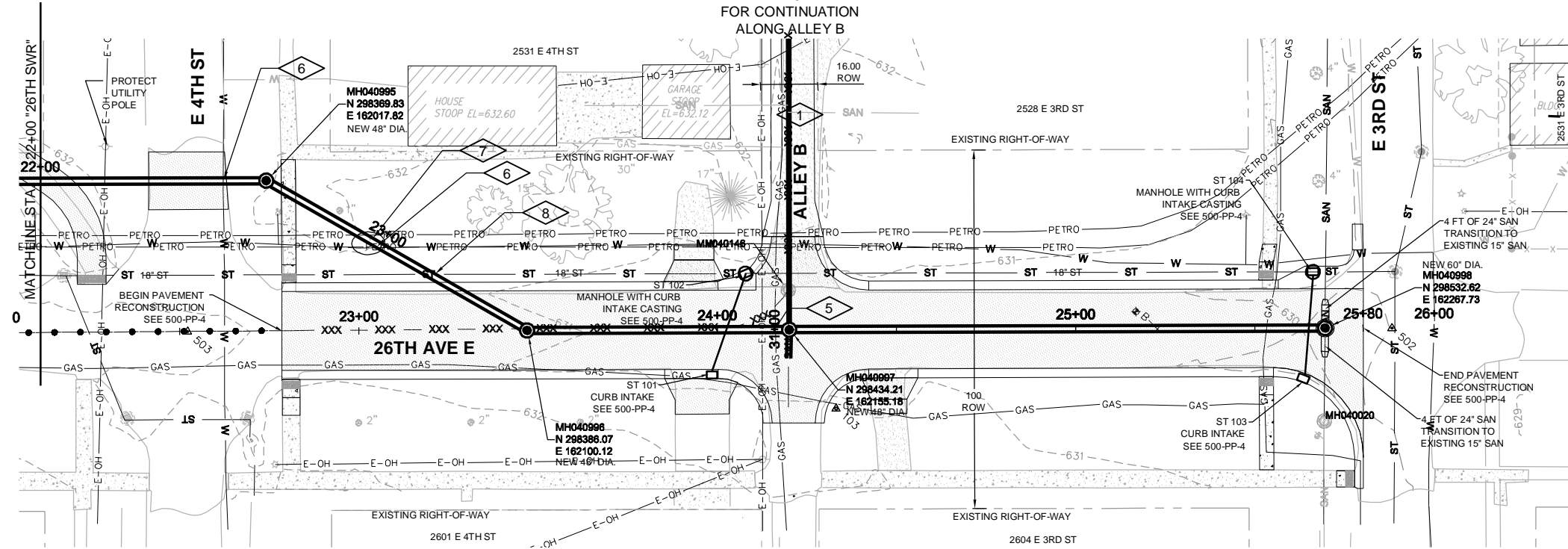
**GENERAL NOTES:**

- ALL DISTURBED AREAS NOT IDENTIFIED ON THE PLANS SHALL BE RESTORED TO MATCH EXISTING CONDITIONS.
- SEE 500-PP-4 FOR PAVEMENT AND STORM SEWER CONSTRUCTION INFORMATION.

**PLAN NOTES:**

- GRAVEL PAVEMENT
- BITUMINOUS PAVEMENT PATCH
- CONCRETE SIDEWALK
- DRIVEWAY
- UTILITY CROSSING, FIELD VERIFY AND PROTECT
- UTILITY CROSSING WATER, FIELD VERIFY AND PROTECT
- UTILITY CROSSING, PETROLEUM (2 LINES), FIELD VERIFY AND PROTECT
- UTILITY CROSSING, STORM SEWER VERIFY AND PROTECT.

SEE 520-PP-1  
FOR CONTINUATION  
ALONG ALLEY B



**CONTROL POINTS**

| Point # | Northing    | Easting     | Elevation | Raw Description |
|---------|-------------|-------------|-----------|-----------------|
| 103     | 298426.2140 | 162179.4590 | 631.635   | SETSPK          |
| 502     | 298544.8560 | 162281.8250 | 629.973   | FDSPK           |
| 503     | 298323.6940 | 162028.8510 | 632.009   | FDSPK           |

|              |              |
|--------------|--------------|
| Designed By  | TLW          |
| Drawn By     | SJB          |
| Checked By   | TLW          |
| Approved By  | SJK          |
| Filename     | 500-PP-1.DWG |
| Project No.  | 13241        |
| Project Date | 12/28/2017   |

CITY OF SUPERIOR, WISCONSIN  
 NEWTON CREEK AND NELSON CREEK TRUNK SEWERS  
 PLAN AND PROFILE (26TH AVENUE E)  
 STA 22+00 TO STA 26+00 "26TH SWR"



|             |    |
|-------------|----|
| Sheet No.   | 28 |
| Drawing No. |    |

500-PP-3

