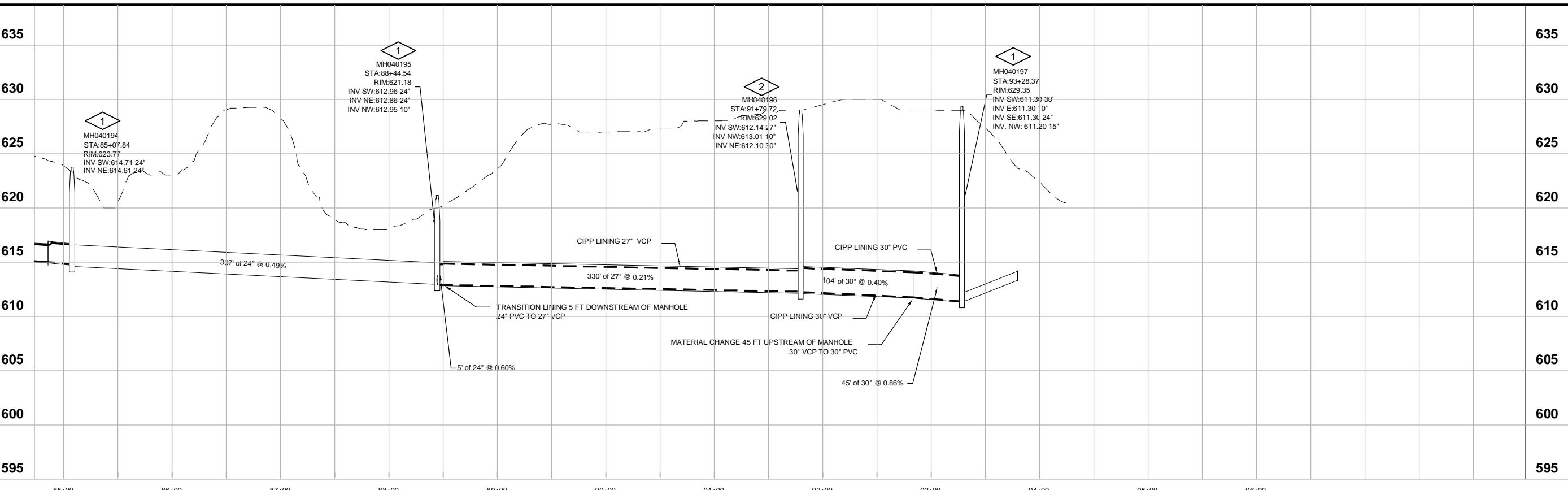
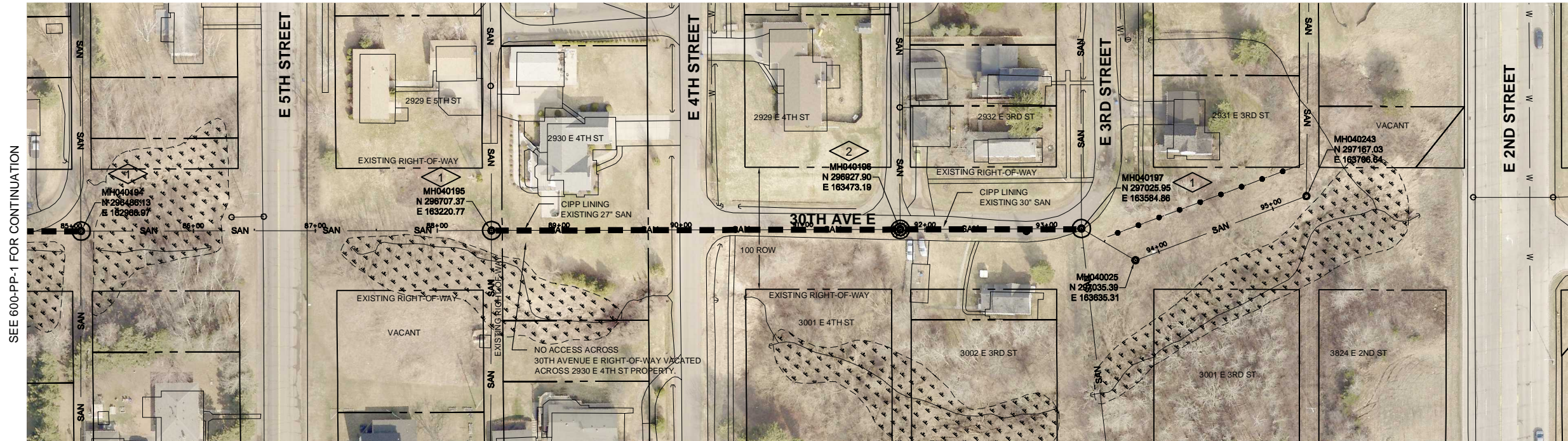
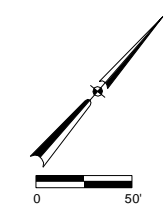


GENERAL NOTES:

1. PROVIDE TRAFFIC CONTROL IN ACCORDANCE WITH CITY STANDARDS AND WMUTCD.
2. LANE CLOSURES SHALL BE TEMPORARY AND OPEN TO TRAFFIC THE SAME DAY, UNLESS COORDINATED WITH OWNER.
3. EROSION CONTROL SHALL BE IN PLACE PRIOR TO ANY EARTH DISTURBING ACTIVITIES, SEE 002-EC-4.

PLAN NOTES:

1. EXISTING CONCRETE MANHOLE CONSTRUCTED DURING 2006 SEWER REPAIR PROJECT.
2. MH040196 - EXISTING BRICK MANHOLE CONSTRUCTED 1915. REHABILITATE MANHOLE, PROVIDE CHIMNEY SEALS AND NEW CASTING. RESTORE BITUMINOUS PAVEMENT.



I:\PROJECTS\13241\DWG\600-PP-1.DWG

Revision Number	Revision Description	Date

Designed By	TLW
Drawn By	SJB
Checked By	TLW
Approved By	SJK
Filename	600-PP-1.DWG
Project No.	13241
Project Date	12/28/2017

CITY OF SUPERIOR, WISCONSIN
NEWTON CREEK AND NELSON CREEK TRUNK SEWERS
PLAN AND PROFILE
NELSON CREEK

Sheet No. 38
 Drawing No. 600-PP-2