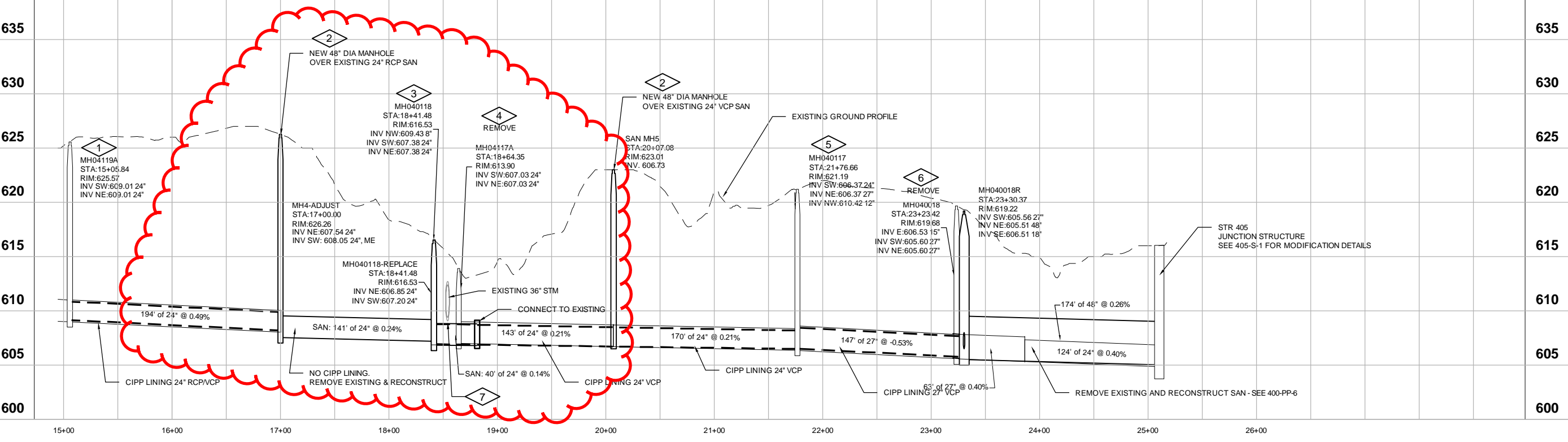


GENERAL NOTES:

1. PROVIDE TRAFFIC CONTROL IN ACCORDANCE WITH CITY STANDARDS AND WWMUTCD.
2. LANE CLOSURES SHALL BE TEMPORARY AND OPEN TO TRAFFIC THE SAME DAY, UNLESS COORDINATED WITH OWNER.
3. NO LAND DISTURBING ACTIVITIES TO BEGIN PRIOR TO INSTALLATION AND CITY APPROVAL OF EROSION CONTROL. SEE 002-EC-1.

PLAN NOTES:

1. MH04119A - EXISTING BRICK MANHOLE CONSTRUCTED 1904. NO CONNECTION NW. CIPP LINING TO EXTEND THROUGH STRUCTURE. CONTRACTOR TO ABANDON SANITARY MANHOLE. MINIMIZE DISTURBED AREA NEAR NEWTON CREEK.
2. NEW 48" DIA. PRECAST CONCRETE MANHOLE OVER EXISTING 24" SAN. FIELD VERIFY LOCATION AND DEPTH. RESTORE BITUMINOUS PAVEMENT. REVISED LOCATION. RESTORE DISTURBED SURFACES TO MATCH EXISTING, INCLUDING CONC SIDEWALK.
3. MH040118 - EXISTING BRICK MANHOLE CONSTRUCTED 1904. REMOVE EXISTING BRICK CONE AND REPLACE WITH PRECAST CONCRETE CONE. PROVIDE CHIMNEY SEALS, NEW CASTING AND REHABILITATE MANHOLE. MINIMIZE DISTURBED AREA NEAR NEWTON CREEK. REMOVE ENTIRE STRUCTURE AND REPLACE WITH 48" DIA. PRECAST CONCRETE MANHOLE. PROVIDE CHIMNEY SEALS AND SOLID CASTING. RESTORE EMBANKMENT WITH WETLAND SEEDING.
4. MH04117A - EXISTING CONC MANHOLE. NO CONNECTION NW. CIPP LINING TO EXTEND THROUGH STRUCTURE. CONTRACTOR TO ABANDON SANITARY MANHOLE. MINIMIZE DISTURBED AREA NEAR NEWTON CREEK. REMOVE MANHOLE.
5. MH040117 - EXISTING BRICK MANHOLE CONSTRUCTED 1904. REHABILITATE MANHOLE. PROVIDE CHIMNEY SEALS AND NEW CASTING. MINIMIZE DISTURBED AREA NEAR NEWTON CREEK.
6. SEE 400-PP-4 FOR ENLARGED PLAN & PROFILE FROM MH040018 TO LIFT STATION 5.
7. RECONSTRUCT SANITARY SEWER BENEATH EXISTING 36" RCP STORM OUTLET PIPE. REMOVE AND RESET STORM PIPING, PROVIDE JOINT TIES AT LAST 3 JOINT UPSTREAM OF STORM OUTFALL PER WISDOT SDD 8F4. BEDDING AND BACKFILL COMPACTION AROUND NEW 24-INCH SANITARY PVC SHALL BE FIELD TESTED AT THE LOCATION OF THE SEWER CROSSING. PROVIDE 3/4-INCH PRESSURE-TREATED PLYWOOD (8 FT BY 8 FT AREA) OVER SANITARY BACKFILL IN LOCATION OF STORM SEWER CROSSING. PROVIDE 1-INCH RIGID INSULATION OVER PLYWOOD. CONTRACTOR SHALL FIELD VERIFY COVER DEPTH, IF POSSIBLE PROVIDE 2-INCH RIGID INSULATION.



Date	08/27/18
Checked By	AMH
Drawn By	TLW
Revision Number	01
Revision Description	WCD #8 - SAN PIPE REPLACEMENT
Designed By	TLW
Drawn By	SJB
Checked By	SJK
Approved By	SJK
Filename	400-PP-1_WCD.DWG
Project No.	13241
Project Date	12/28/2017

CITY OF SUPERIOR, WISCONSIN
NEWTON CREEK AND NELSON CREEK TRUNK SEWERS

PLAN AND PROFILE
NEWTON CREEK

DONOHUE

Sheet No. _____
 Drawing No. _____

400-PP-2

\\13241\SHED\WG400-PP-1_WCD.DWG