

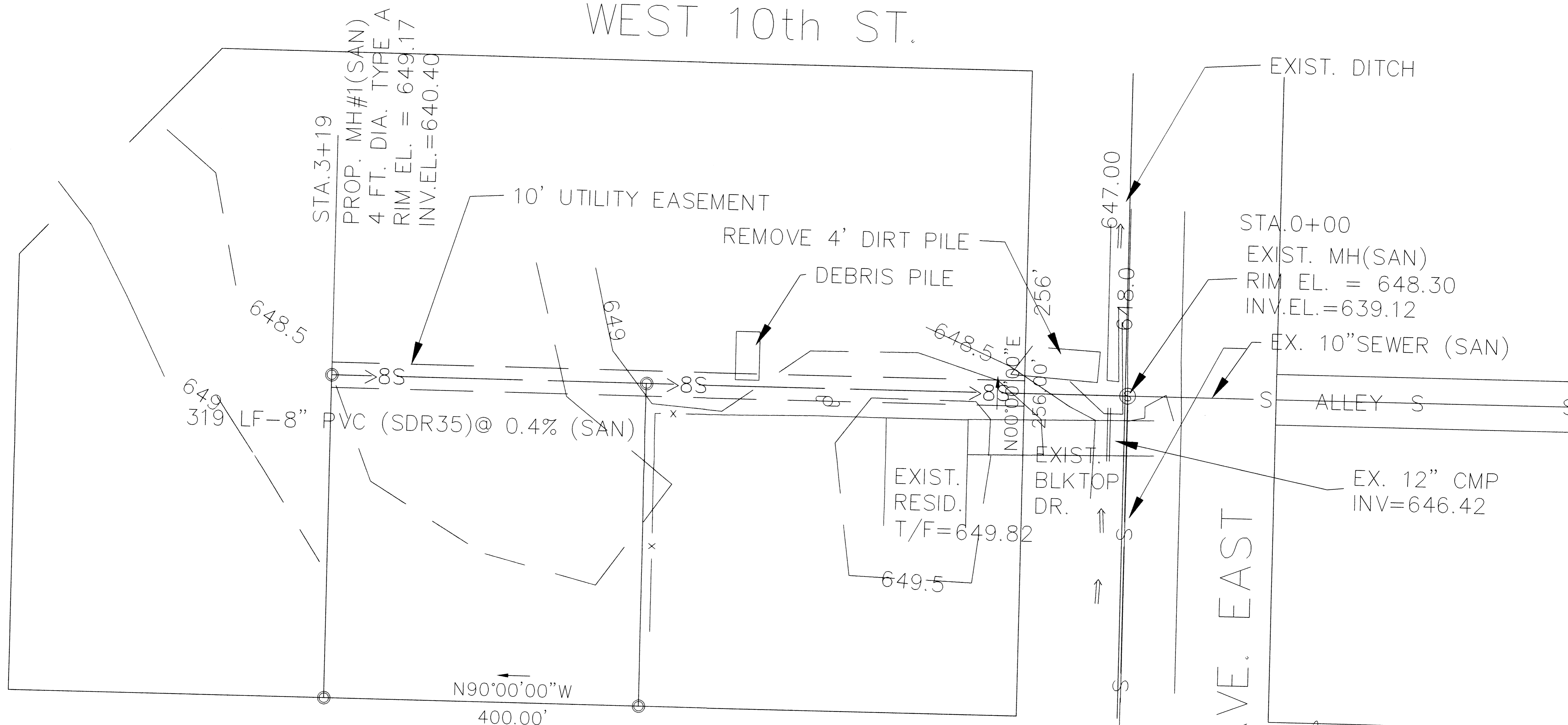
PROFILE:
SCALE: 1" = 20' HOR
1" = 2' VERT

REV. 3/22/99

	CRI ENGINEERING <small>Civil Engineering Land Planning Construction Management</small> <small>12 BADGER DRIVE SUPERIOR WI 54880 (715) 394-7330 FAX (715) 394-7233</small>				
	SEWER EXTENSION TRACY AND BILL BURM SUPERIOR, WI.	<table border="1"> <tr><td>CRI</td></tr> <tr><td>AS NOTED</td></tr> <tr><td>8/21/98</td></tr> </table>	CRI	AS NOTED	8/21/98
	CRI				
AS NOTED					
8/21/98					
PLAN	<table border="1"> <tr><td>2</td></tr> </table>	2			
2					

18 th AVE. EAST

WEST 10th ST.



STA.3+19
 PROP. MH#1(SAN)
 4 FT. DIA. TYPE A
 RIM EL. = 649.17
 INV.EL.=640.40

10' UTILITY EASEMENT

REMOVE 4' DIRT PILE

DEBRIS PILE

319 LF-8" PVC (SDR35)@ 0.4% (SAN)
 >8S

STA.0+00
 EXIST. MH(SAN)
 RIM EL. = 648.30
 INV.EL.=639.12

EX. 10"SEWER (SAN)

ALLEY S

EXIST. RESID.
 T/F=649.82

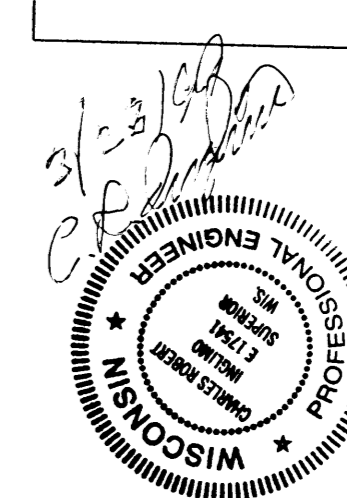
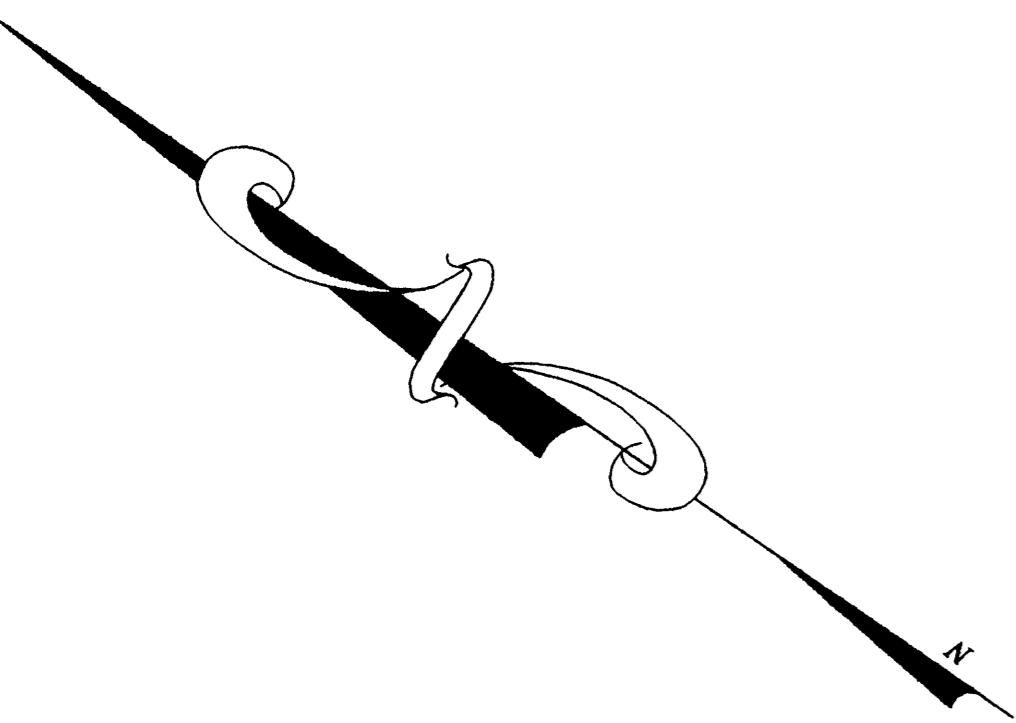
EXIST. BLKTOP
 DR.

EX. 12" CMP
 INV=646.42

N90°00'00"W
 400.00'


WEST 11th ST.

SCALE 1"=20'



REV. 3/22/99

BLOCK 25 IN THE TOWNSITE OF
 SUPERIOR IN THE CITY OF SUPERIOR,
 DOUGLAS COUNTY, WI.
 LOCATED IN THE NORTH HALF OF
 SEC. 25, TOWNSHIP 45, RANGE 14

 CRI ENGINEERING Civil Engineering Land Planning Construction Management 12 BADGER DRIVE SUPERIOR, WI 54880 (715) 394 7338 FAX (715) 394 7233	SEWER EXTENSION TRACY AND BILL BURM SUPERIOR, WI.		CRI AS NOTED 8/21/98
	PLAN	1	