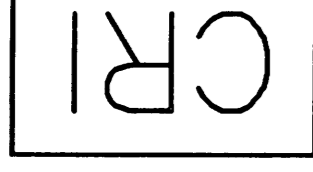


SAN. SEWER EXTENSION FOR JOHN FARMER  
 12 BADGER DRIVE SUPERIOR, W. 54880  
 (715) 394 7338  
 Construction Management  
 Land Planning  
 Civil Engineering

C.R.I. ENGINEERING

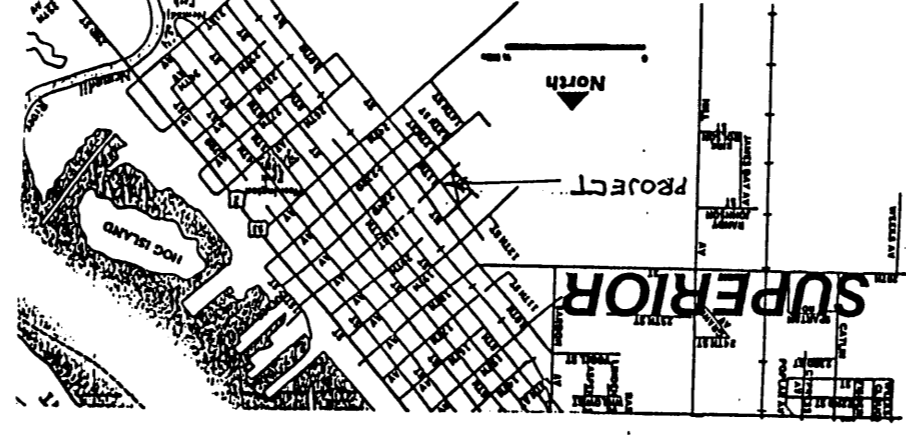


FEB. 9, 1996 SHEET #1

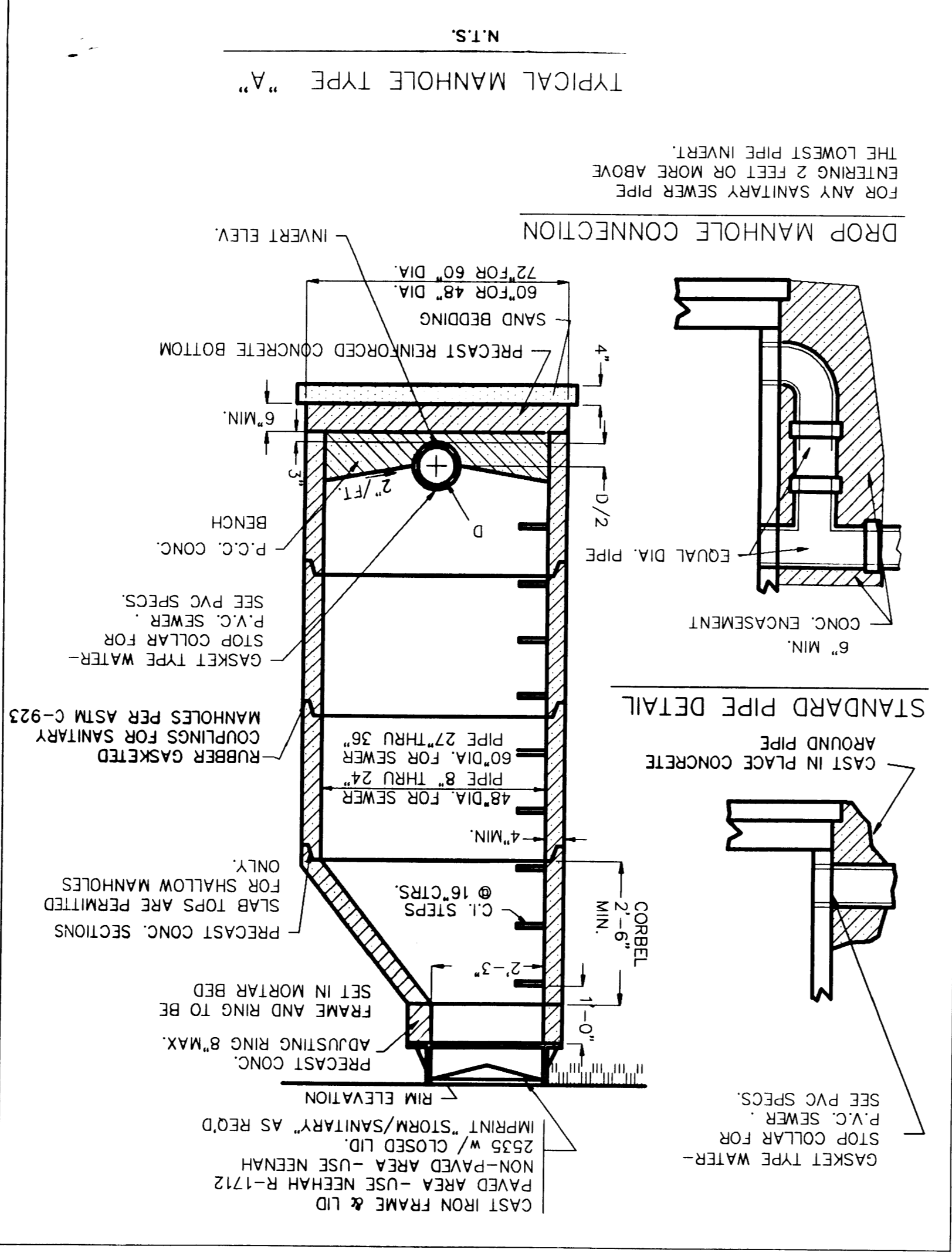
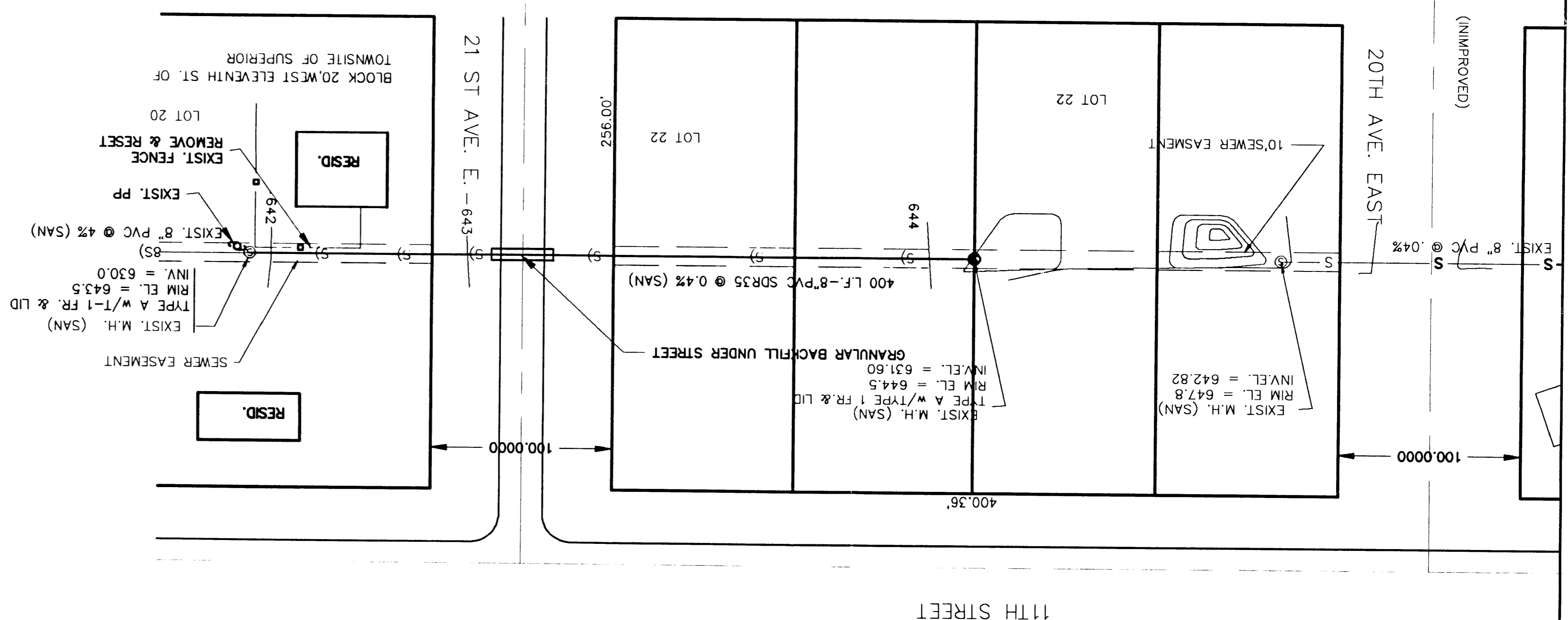
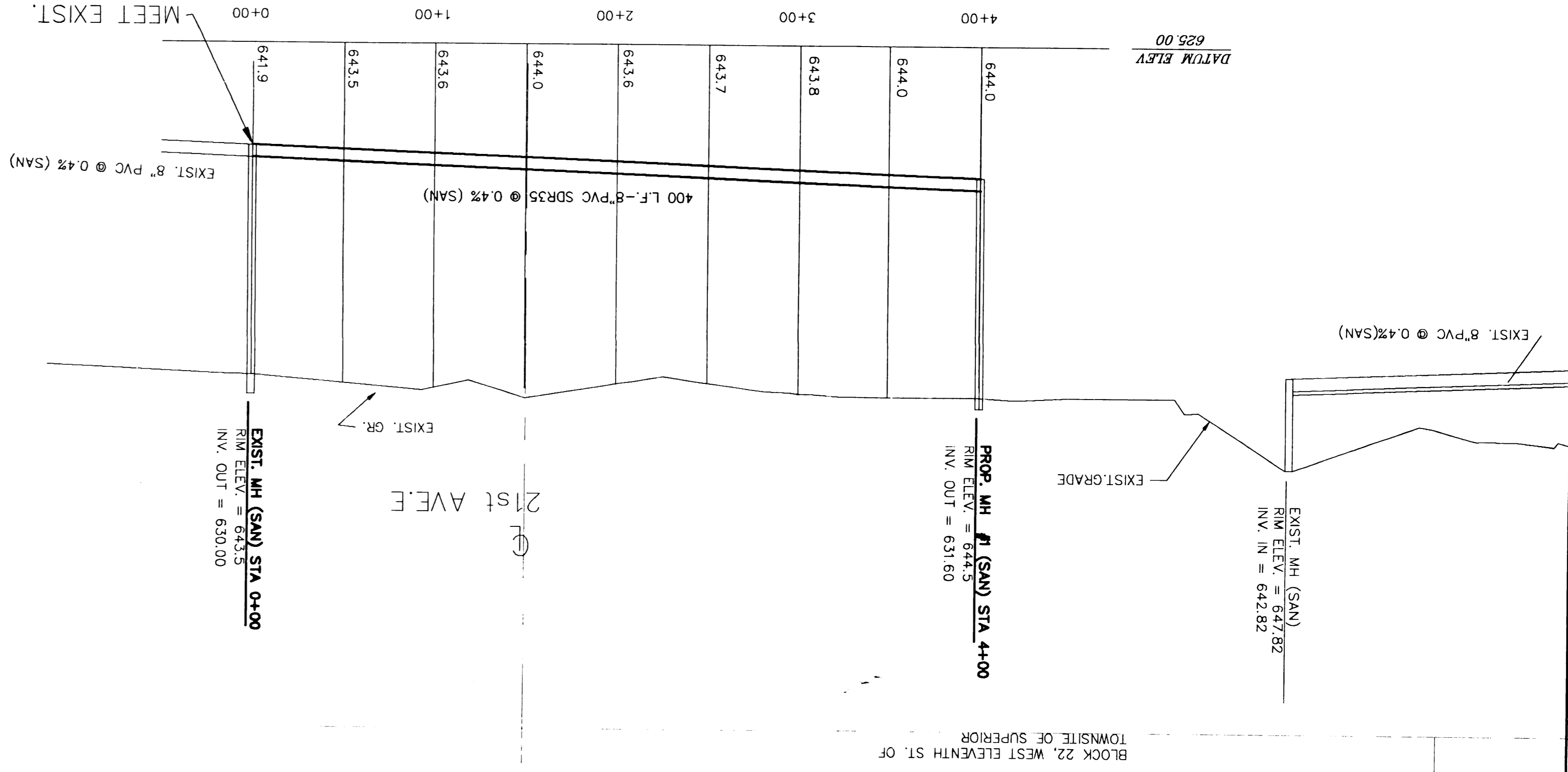


I, HEREBY, CERTIFY THAT ALL PLANS AND SPECIFICATIONS HAVE BEEN PREPARED BY ME AND IN COMPLIANCE WITH MUNICIPAL ORDINANCES AND WITH GOOD ENGINEERING PRACTICE.

LOCATION MAP



PROFILE  
 SCALE:  
 1" = 50' HOR.  
 1" = 5' VERT.



GENERAL NOTES

- ALL WORK SHALL BE DONE IN ACCORDANCE WITH STANDARD SPECIFICATIONS FOR ROAD AND BRIDGE CONSTRUCTION, WISCONSIN, 5TH EDITION.
- WISCONSIN CONSTRUCTION SITE BEST MANAGEMENT PRACTICE HANDBOOK AND APPLICABLE SUPERIOR, W. ORDINANCES.
- BENCH MARK ELEVATIONS ARE TOP OF MANHOLE FRAMES.
- 830.0 T.C. INDICATES TOP OF CURB ELEVATION.
- 830.0 F.F. INDICATES ELEVATION OF FINISHED FRAME.
- 830.0 G.H. INDICATES ELEVATION OF GROUND @ PROPOSED HYDRANT LOCATION.
- PAVING ITEM - BITUMINOUS CON. SURFACE C.L.B. - SHALL INCLUDE BITUMINOUS MATERIAL (PRIME) ACCORDING TO THE STANDARD SPECIFICATIONS.
- PAVING ITEM - PARKWAY RESTORATION - SHALL INCLUDE TOPSOIL PLACEMENT AND SEEDING ACCORDING TO THE STANDARD SPECIFICATIONS.
- FOR INFORMATION ONLY AND REPRESENT THE BEST KNOWLEDGE OF THE ENGINEER, IT SHALL BE THE CONTRACTOR'S RESPONSIBILITY TO VERIFY LOCATIONS OF UTILITY INSTALLATIONS BEFORE STARTING CONSTRUCTION OPERATIONS.
- THE CONTRACTOR SHALL CONTACT ALL UTILITY COMPANIES IN ORDER TO HAVE EXISTING UNDERGROUND LOCATIONS STAKED PRIOR TO CONSTRUCTION.
- NOTE: ALL CONTRACTORS TO NOTIFY VILLAGE ENGINEERS THREE (3) WORKING DAYS PRIOR TO COMMENCEMENT OF WORK, FAILURE TO DO SO MAY RESULT IN REJECTION OF COMPLETED WORK.
- ELEVATION DATUM IS USGS.
- SANITARY SEWER CONSTRUCTION
- ALL FLOOR DRAINS SHALL DISCHARGE TO THE SANITARY SEWER.
- ALL SANITARY SEWER AND SEWER PIPE JOINTS SHALL CONFORM TO:
  - MINIMUM BEDDING: FOUR INCHES BELOW PIPE TO SPRING LINE.
  - EXCEPT FOR P.V.C. WHICH SHALL BE FOUR INCHES BELOW PIPE TO TWELVE INCHES ABOVE THE TOP OF THE PIPE. BEDDING SHALL BE OF GRADE SAND.
  - MANHOLES SHALL HAVE FOUR INCHES OF STONE BEDDING. THE JOINTS SHALL BE PERFORMED BITUMINOUS PLASTIC GASKET WITH INERT MATERIAL FILLER SIMILAR TO RAM-NEK TO PROVIDE A WATER-TIGHT SEAL.
  - WATER-STOP GASKET SHALL BE PROVIDED AT ALL SANITARY SEWER MANHOLE CONNECTIONS. SUCH GASKETS SHALL BE IN ACCORDANCE WITH MANUFACTURER'S SPECIFICATIONS FOR THE TYPE OF PIPE USED.
  - WHenever utilities cross paved areas, trenches shall be backfilled with approved granular material whenever one utility crosses another, the lower trench shall in all cases be filled with approved granular material.
  - WHEN CONNECTING TO AN EXISTING SEWER MAIN BY MEANS OTHER THAN AN EXISTING WYE, TEE, OR AN EXISTING MANHOLE, ONE OF THE FOLLOWING METHODS SHALL BE USED:
    - CIRCULAR SAW-CUT OF SEWER MAIN BY PROPER TOOLS ("SEWER-TAP" MACHINE OR SIMILAR) AND PROPER INSTALLATION OF HUB-WYE SADDLE OR HUB-TEE SADDLE.
    - REMOVE AN ENTIRE SECTION OF PIPE (BREAKING ONLY THE TOP OF ONE BELT) AND REPLACE WITH A WYE OR TEE BRANCH SECTION.
    - WITH PIPE CUTTER, NEATLY AND ACCURATELY CUT OUT DESIRED LENGTH OF PIPE FOR INSERTION OF PROPER FITTING, USING "BAND-SEAL" OR SIMILAR COUPLINGS TO HOLD IT FIRMLY IN PLACE.
  - WHEREVER A SEWER CROSSES UNDER A WATERMAIN OR STORM SEWER, THE MINIMUM VERTICAL DISTANCE FROM THE TOP OF THE SEWER TO THE BOTTOM OF THE WATERMAIN SHALL BE 18". FURTHERMORE, A MINIMUM HORIZONTAL DISTANCE OF 10' BETWEEN SANITARY SEWERS AND WATERMANS SHALL BE MAINTAINED UNLESS THE SEWER IS LAID IN A SEPARATE TRENCH, KEEPING A MINIMUM 18" VERTICAL OR THE SEWER IS LAID IN THE SAME TRENCH WITH THE WATERMAIN LOCATED AT THE OPPOSITE SIDE ON A BENCH OF UNDISTURBED EARTH, KEEPING A MINIMUM 18" VERTICAL SEPARATION. IF EITHER THE VERTICAL OR HORIZONTAL DISTANCES DESCRIBED ABOVE CANNOT BE MAINTAINED, OR THE SEWER DUCTILE IRON OR AN APPROVED EQUIVALENT.
  - ALL EXISTING SEPTIC SYSTEMS TO BE ABANDONED, ABANDONED TANKS TO BE FILLED OR REMOVED.
  - SANITARY SEWER SHALL BE AIR TESTED.
  - IT SHALL BE THE CONTRACTOR'S RESPONSIBILITY TO FURNISH ALL LABOR AND MATERIAL FOR THE TESTING, AND SHALL SATISFY HIMSELF THAT THE TESTS CAN BE SUCCESSFULLY COMPLETED PRIOR TO REQUESTING THE ENGINEER'S PRESENCE FOR THE OFFICIAL TESTS.
  - FOLLOWING INITIAL SOIL DISTURBANCE, PERMANENT OR TEMPORARY STABILIZATION SHALL BE COMPLETED WITHIN SEVEN CALENDAR DAYS AS TO THE SURFACE OF ALL PERMETER COUNTS, DIKES, SWALES, DITCHES, PERMETER SLOPES, AND ALL SLOPES GREATER THAN 3:1. IN ADDITION, ALL OTHER DISTURBED OR GRADED AREAS WILL BE STABILIZED WITHIN FOURTEEN CALENDAR DAYS.

ENGINEER'S SIGNATURE: Kristine M. Rasmussen  
 P.E. NO. E77541