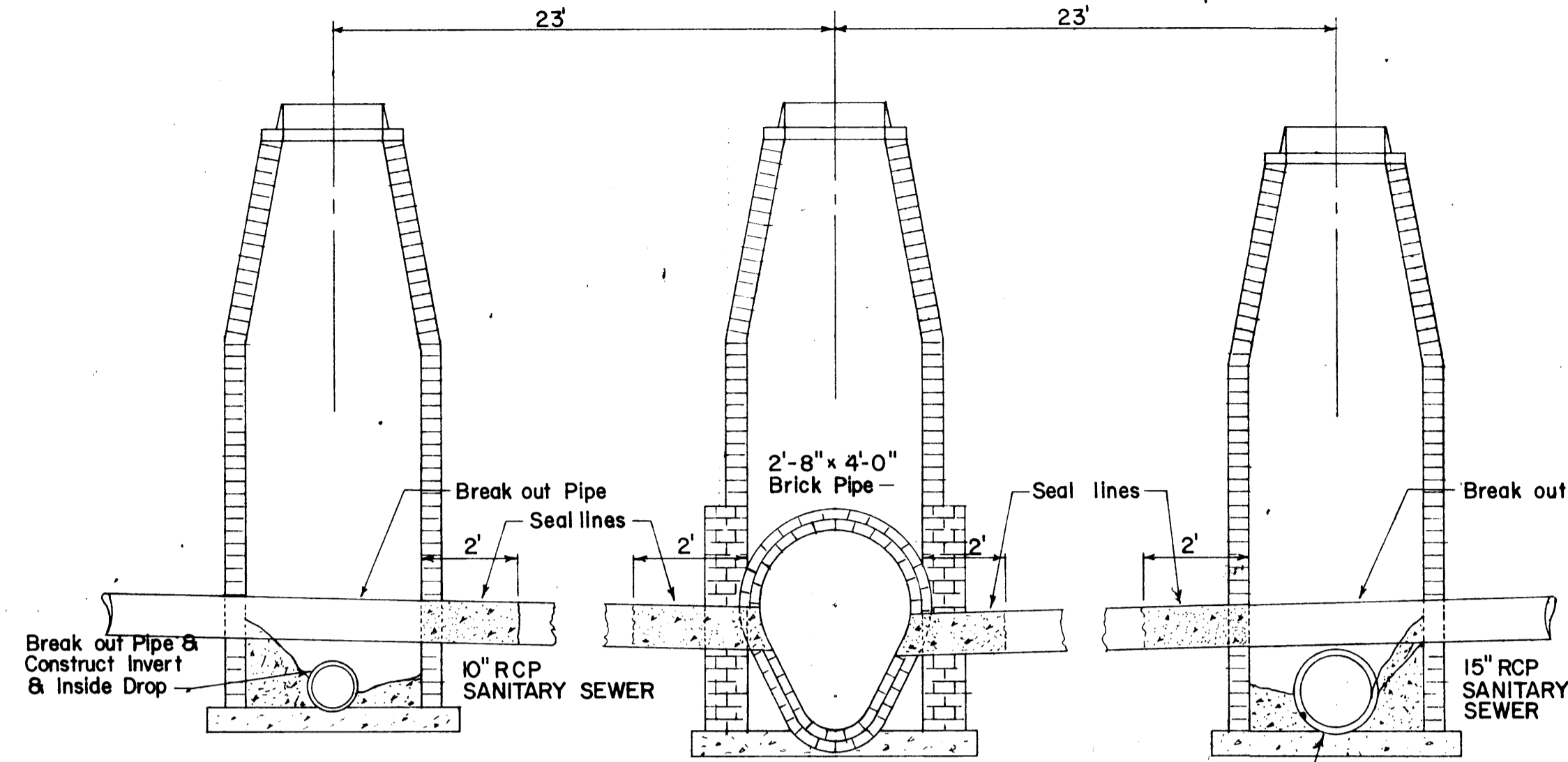
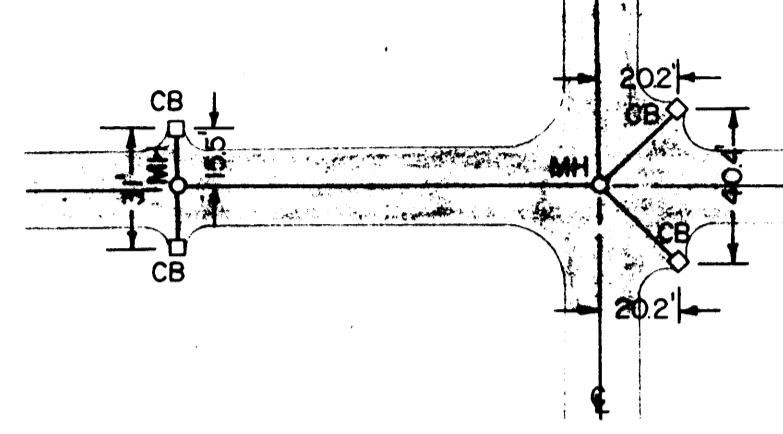
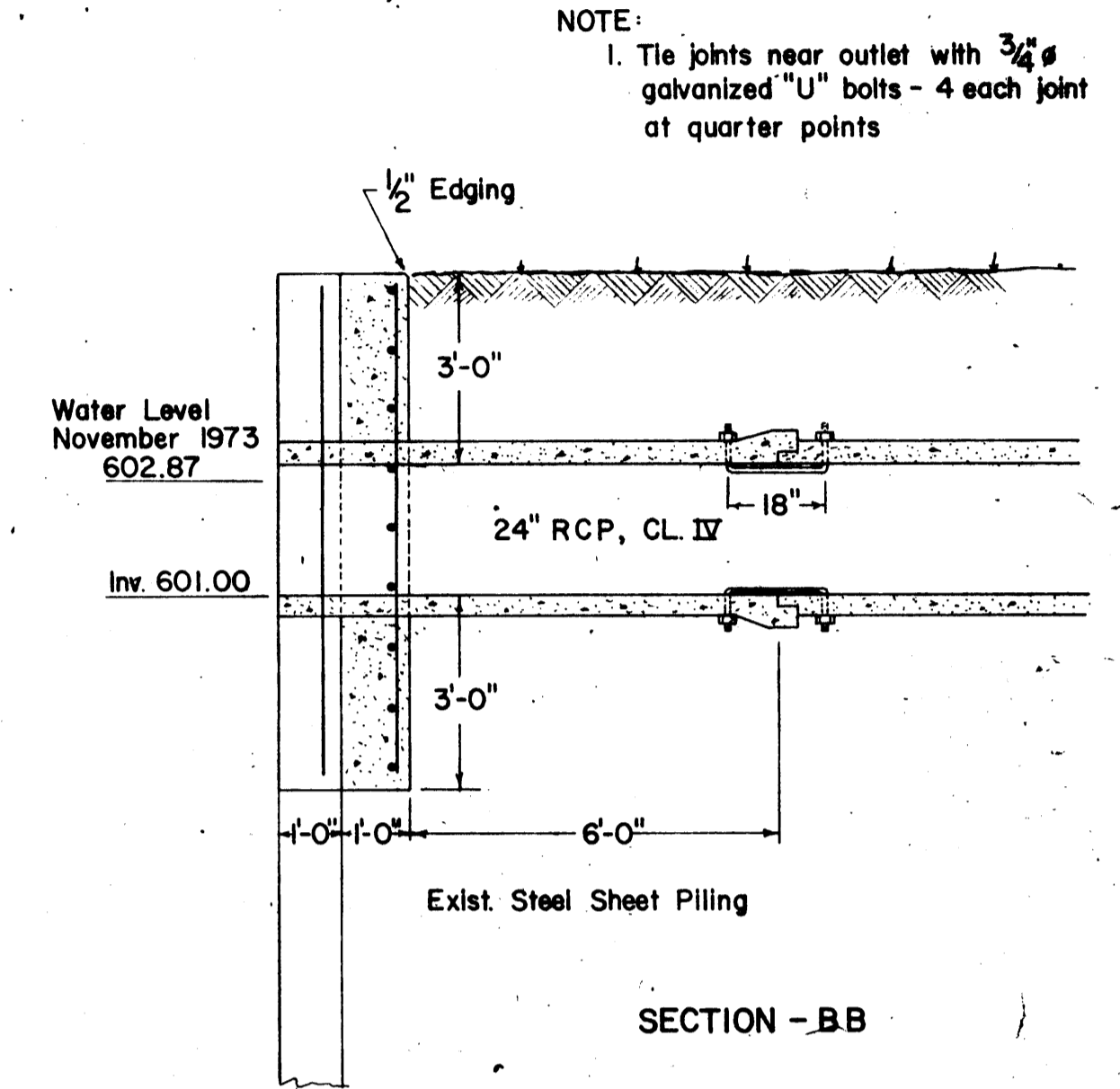
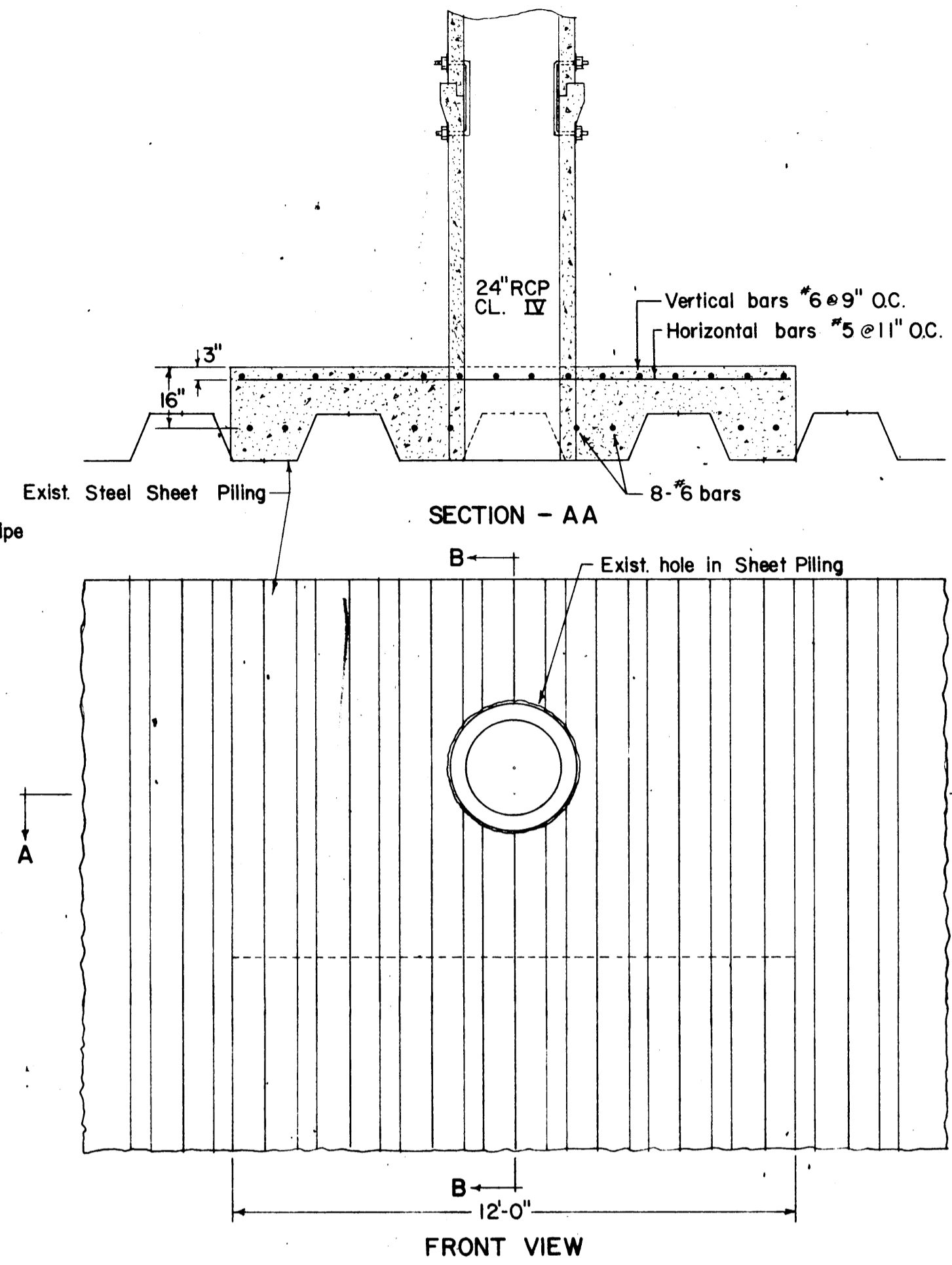


STANDARD CATCHBASIN LOCATION  
(FOR CATCHBASINS NOT DIMENSIONED)  
SCALE: 1" = 50'

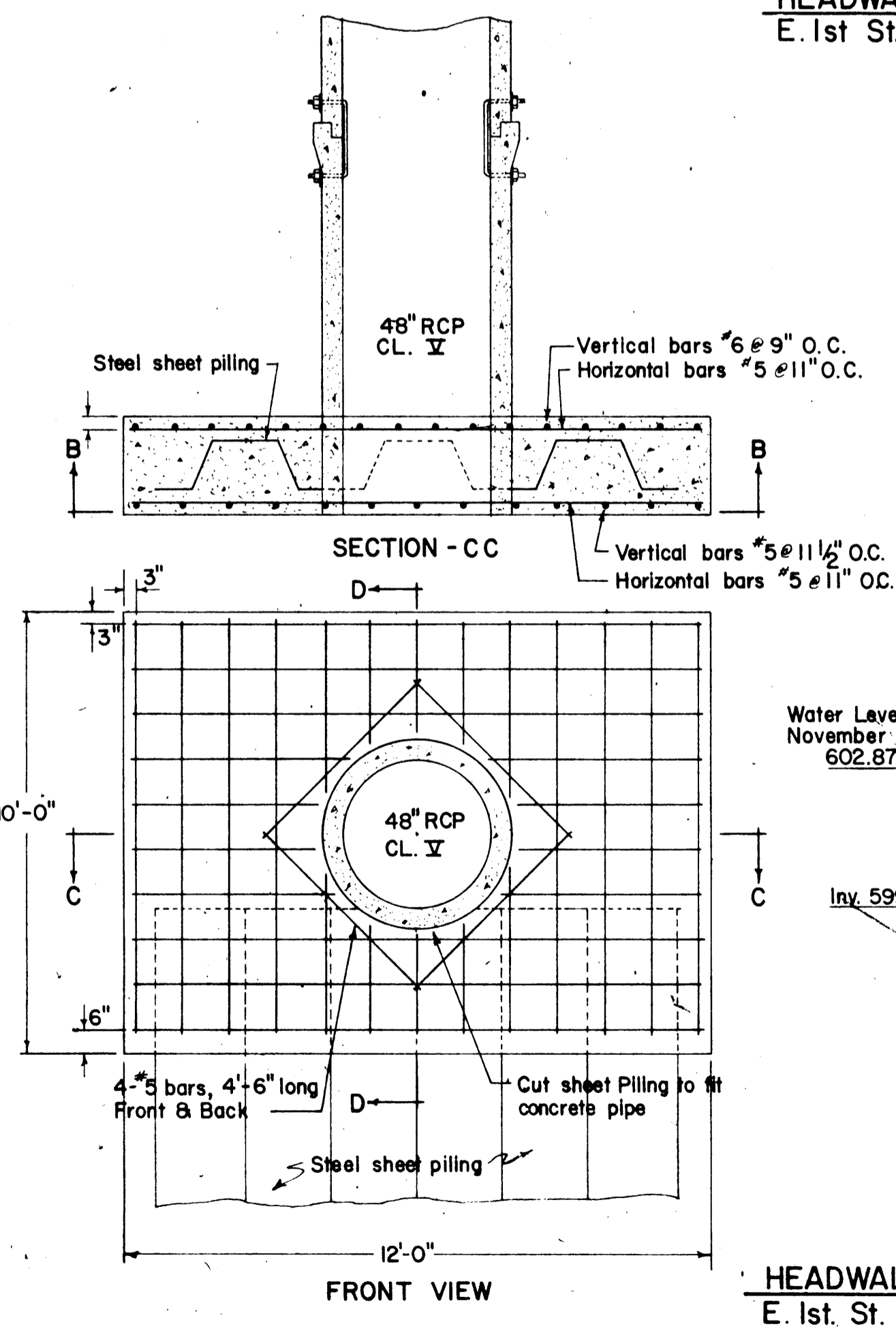


TYPICAL CROSS CONNECTION  
21st. AVE. E. (E. 2nd. St. to E. 9th. St.)  
Scale 1/4" = 1'-0"



NOTE:  
1. Tie joints near outlet with 3/4" galvanized "U" bolts - 4 each joint at quarter points

HEADWALL STRUCTURE  
E. 1st St. & 23rd Ave. E.



NOTE:  
1. Tie 5 joints near outlet with 3/4" galvanized "U" bolts - 4 each joint at quarter points  
2. Tie remaining joints with 3/4" galvanized "U" bolts - 2 each joint at 30° off top.

HEADWALL STRUCTURE  
E. 1st St. & 20th AVE. E.

STREET RESTORATION - DISTRICT 4

Sheet	Street	From	To	Length	Width	Section	Curb
7	E. 3rd St.	26th Ave. E. 1+38	28th Ave. E. 13+50	1212	20	Residential Type A	Type A
7	E. 4th St.	25th Ave. E. 0+51	24th Ave. E. 4+81	430	20	Residential Type A	Type A
8	23rd Ave. E.	E. 2nd Street 3+35	E. 5th Street 13+25	990	10	Industrial Type V	Type E
8	24th Ave. E.	E. 3rd Street 1+57	E. 5th Street 7+02	545	10	Industrial Type V	Type E
8	28th Ave. E.	E. 6th Street 0+00	E. 5th Street 3+00	300	20	Residential Type A	Type A
8	28th Ave. E.	E. 6th Street 0+00	E. 7th Street 3+36	336	20	Residential Type A	Type A
9	26th Ave. E.	E. 3rd Street 0+00	E. 2nd Street 2+96	296	20	Residential Type A	Type A
9	26th Ave. E.	E. 3rd Street 0+00	E. 5th Street 6+44	644	20	Residential Type A	Type A
9	27th Ave. E.	E. 3rd Street 0+00	E. 2nd Street 2+96	296	20	Residential Type A	Type A
9	27th Ave. E.	E. 3rd Street 0+00	E. 5th Street 6+35	635	20	Residential Type A	Type A
9	28th Ave. E.	E. 3rd Street 0+00	E. 2nd Street 2+96.5	296.5	20	Residential Type A	Type A
9	28th Ave. E.	E. 3rd Street 0+00	E. 5th Street 6+42	642	20	Residential Type A	Type A
10	E. 6th Street	30th Ave. E. 0+52	27th Ave. E. 16+76	1624	20	Residential Type A	Type A
10	27th Ave. E.	E. 6th Street 0+00	E. 5th Street 2+99	299	20	Residential Type A	Type A
10	27th Ave. E.	E. 6th Street 0+00	E. 9th Street 9+91	991	20	Residential Type A	Type A
10	29th Ave. E.	E. 6th Street 0+00	E. 5th Street 3+00	300	20	Residential Type A	Type A
11	E. 7th Street	25th Ave. E. 1+20	23rd Ave. E. 5+75	455	20	Residential Type A	Type A
11	E. 7th Street	25th Ave. E. 6+15	10+50	435	20	Residential Type A	Type A
12	24th Ave. E.	E. 7th Street 0+00	E. 6th Street 2+00	200	11	Industrial Type V	Type E
12	24th Ave. E.	E. 7th Street 0+00	E. 9th Street 2+31	231	2	Industrial Type V	Type E
12	28th Ave. E.	E. 7th Street 3+36	E. 8th Street 7+42	406	20	Residential Type A	Type A
13	E. 10th Street	24th Ave. E. 2+07	18th Ave. E. 31+75	2968	24	Commercial Type III	Type A
14	19th Ave. E.	E. 10th Street 0-50	E. 9th Street 3+25	375	20	Residential Type A	Type A
14	20th Ave. E.	E. 10th Street 0+00	E. 11th Street 3+25	325	20	Residential Type A	Type A
14	21st Ave. E.	E. 10th Street 0+00	E. 9th Street 3+00	300	20	Residential Type A	Type A
14	22nd Ave. E.	E. 10th Street 1-05	E. 9th Street 3+00	405	20	Residential Type A	Type A
14	22nd Ave. E.	E. 10th Street 1-05	E. 14th Street 13+57	1257	14	Residential Type I (Overlay)	Type A
15	E. 23rd Ave. E.	E. 10th Street 0+00	E. 9th Street 3+26	326	20	Residential Type A	Type A
15	E. 3rd Street	18th Ave. E. 3+50	19th Ave. E. 4+25	475	20	Residential Type A	Type A
16	19th Ave. E.	E. 2nd Street 2+90	E. 9th Street 25+71	2281	20	Residential Type A	Type A
17	E. 7th Street	19th Ave. E. 0-62	18th Ave. E. 4+25	485	20	Residential Type A	Type A
18	20th Ave. E.	E. 2nd Street 0+40	E. 9th Street 22+00	2160	20	Residential Type A	Type A
19	E. 3rd Street	23rd Ave. E. 0+40	22nd Ave. E. 4+06	426	20	Residential Type A	Type A
22	23rd Ave. E.	E. 10th Street 0+00	E. 11th Street 2+65	265	20	Residential Type A	Type A
9,11,22	26th Ave. E.	E. 5th Street 7+02	E. 8th Street 250' @ E. 8th St.	979	20	Residential Type A	Type I

