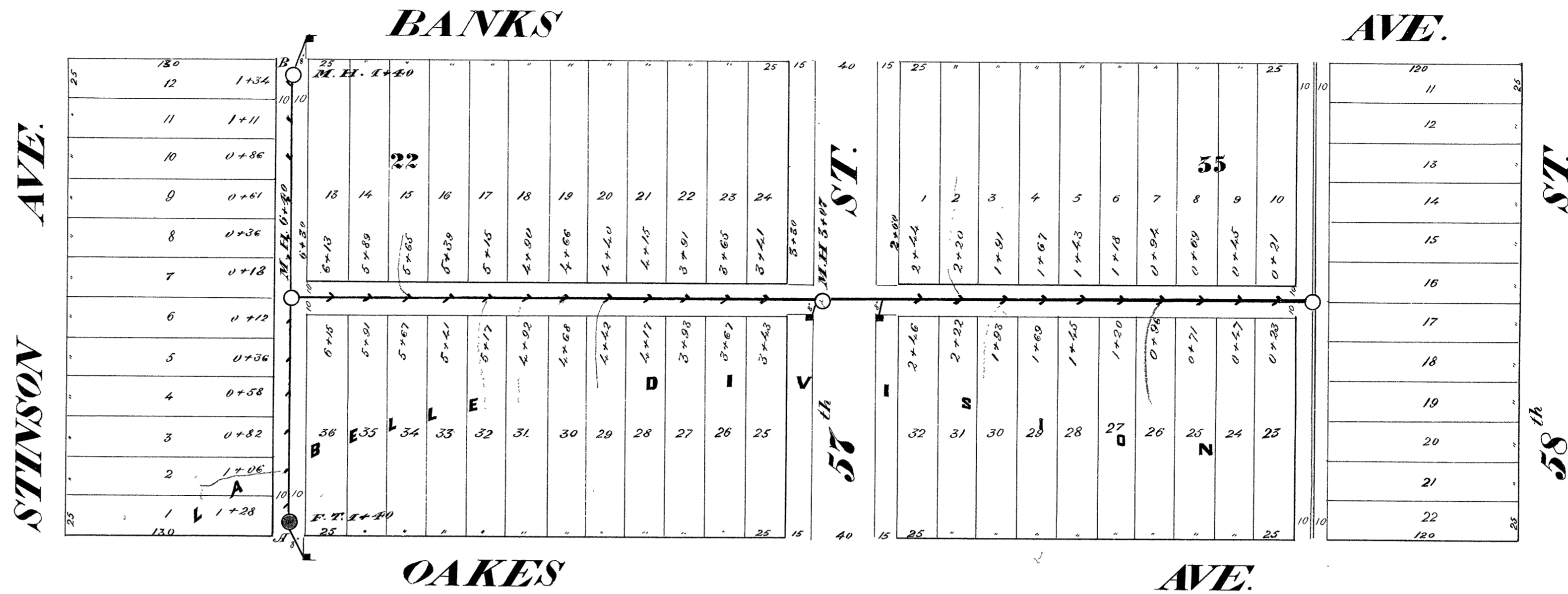


CITY OF SUPERIOR SEWER PLAN

Contract let May 23, 1892
completed Nov. 1, 1892
Johnson & Dole, Contractor
T. A. King, Inspector
A. S. Cooper, City Engineer

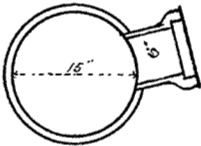


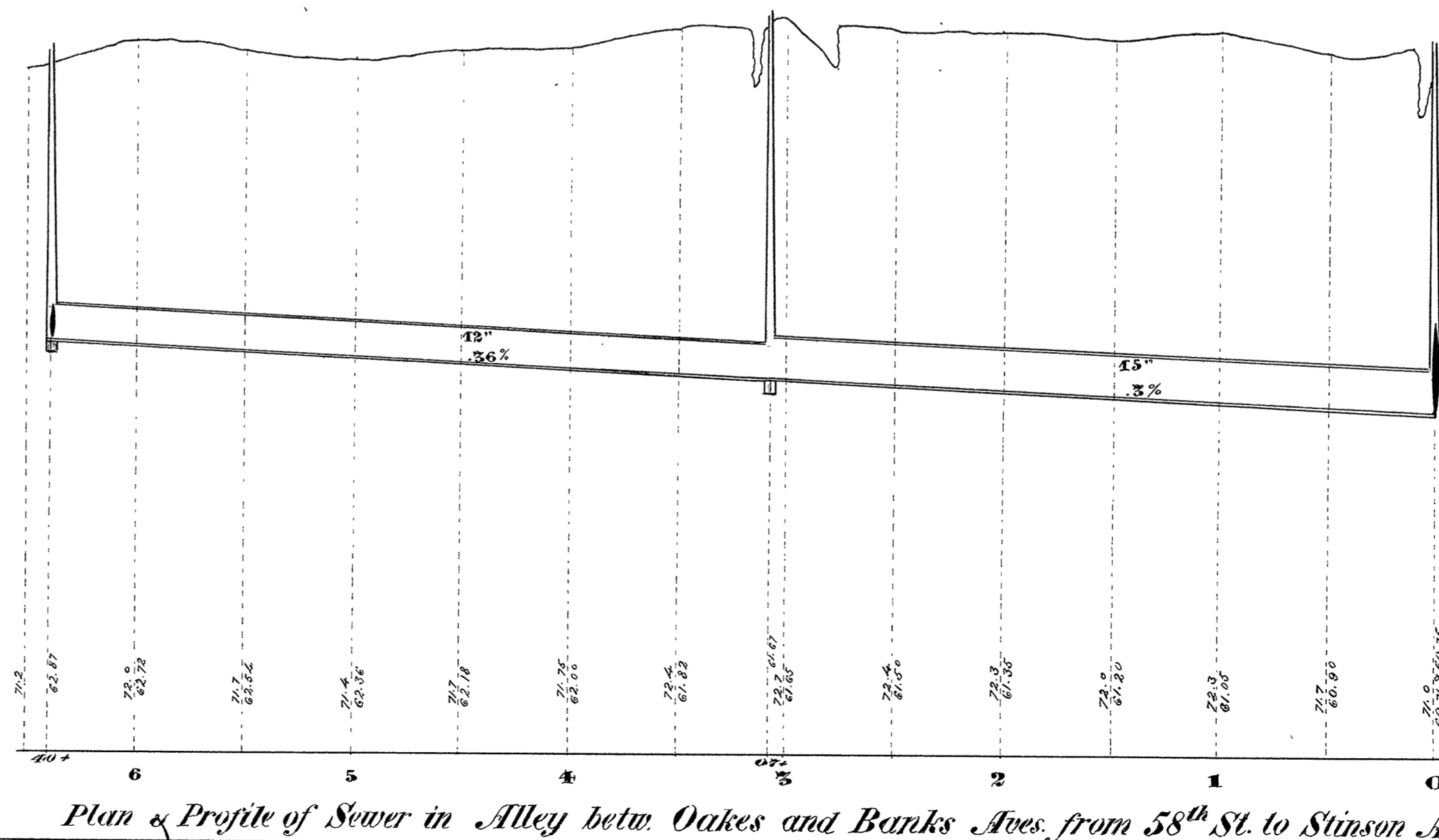
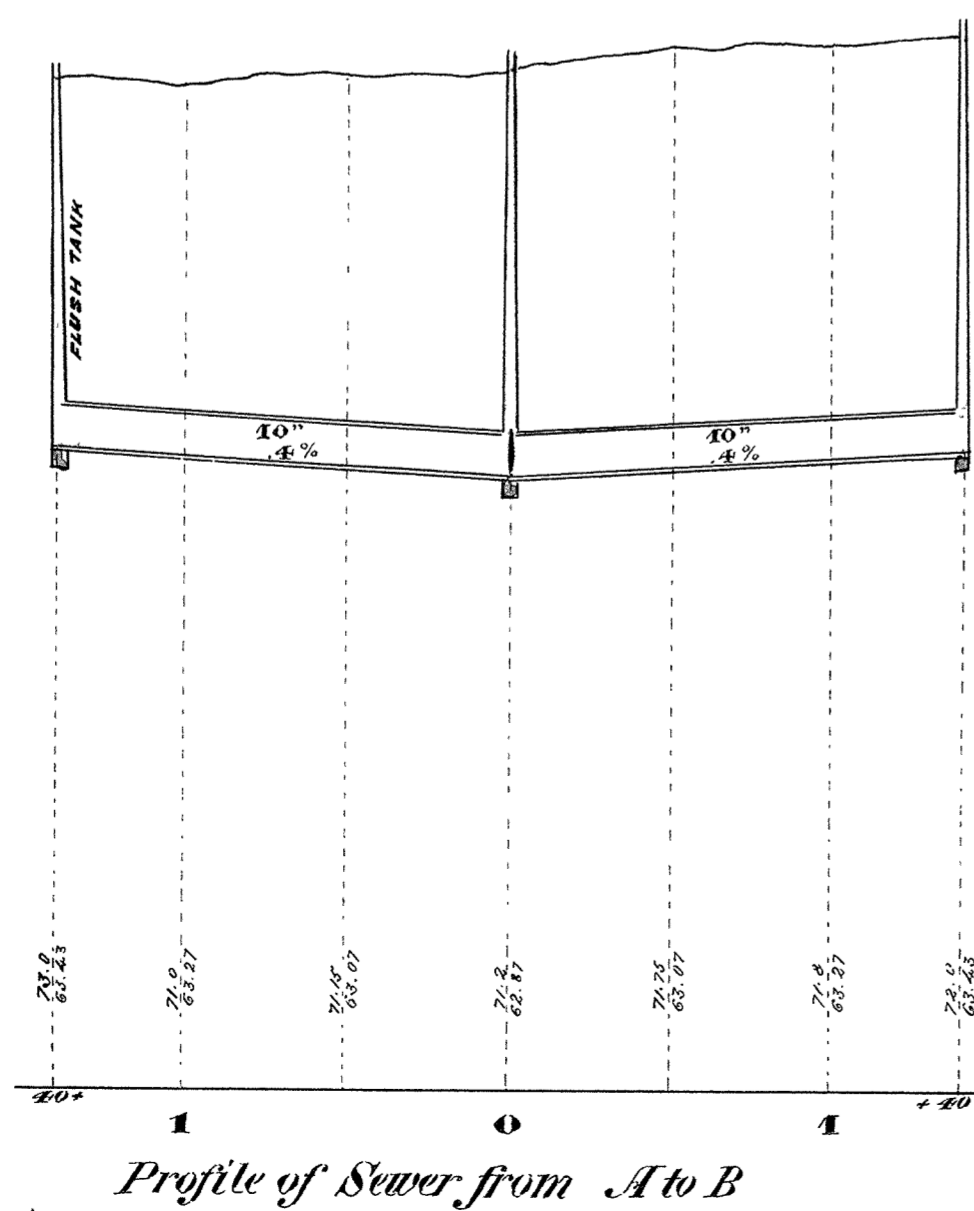
1893

Scale: { Horizontal 60 ft. = 1 inch
Vertical 4 ft. = 1 inch
Section 4 ft. = 1 inch


Section of 10" Pipe


Section of 12" Pipe


Section of 15" Pipe



Base line 50 ft. above datum

5-2