

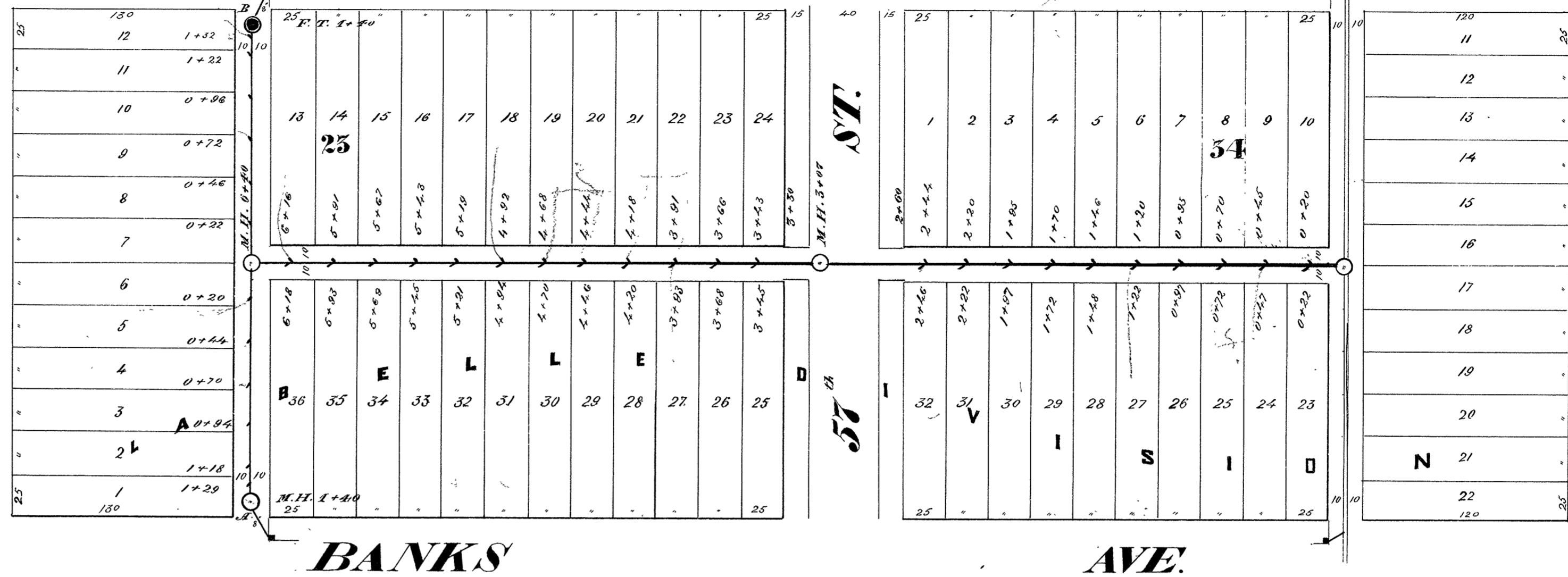
CITY OF SUPERIOR

SEWER PLAN

Contract let May 23, 1892
 completed Nov. 1, 1892
 Johnson & Dole, Contractor
 T. A. King & H. A. Carlson, Inspectors
 A. S. Cooper, City Engineer

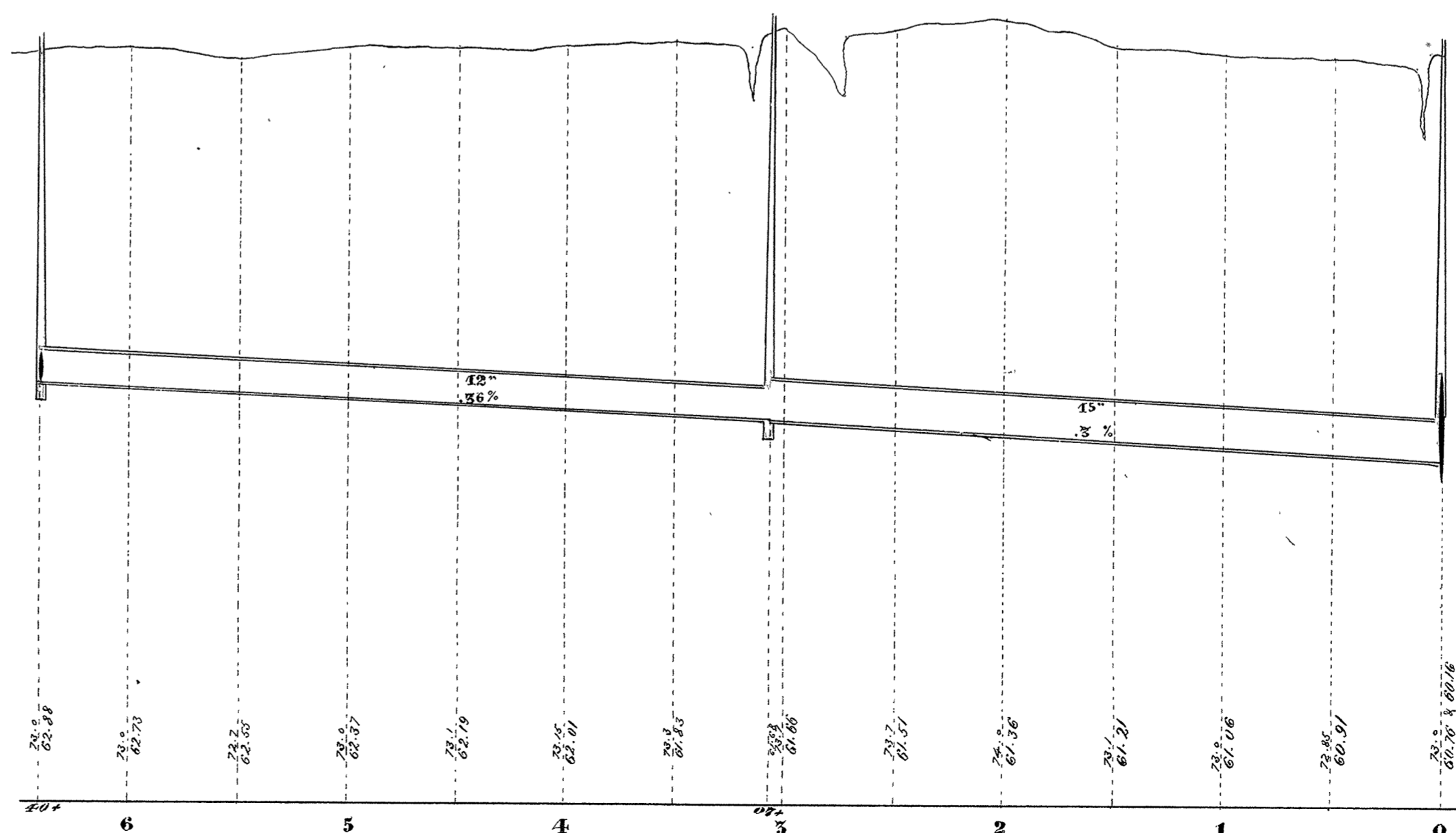
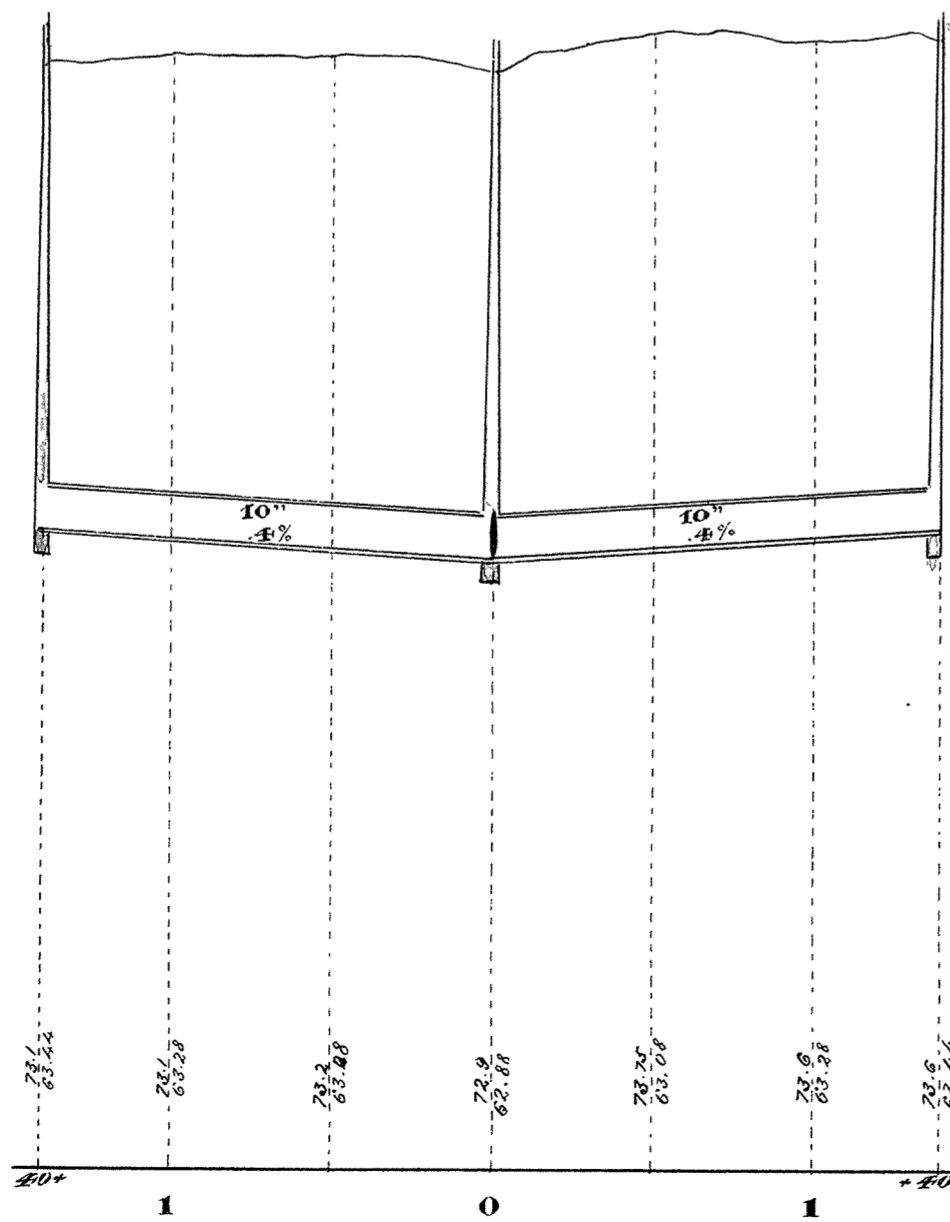
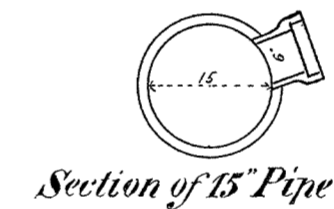
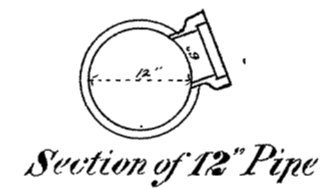
STINSON AVE.

TOWER AVE.



1893

Scale: { Horizontal 60 ft. = 1 inch
 Vertical 4 ft. = 1 inch
 Section 2 ft. = 1 inch



Base line 50 ft. above datum

Profile of Sewer from A to B

Plan & Profile of Sewer in Alley between Banks and Tower Aves from 58th St. to Stinson Ave.