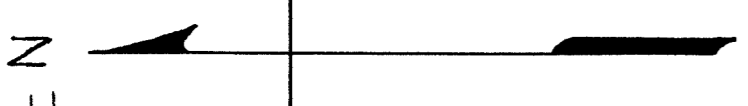
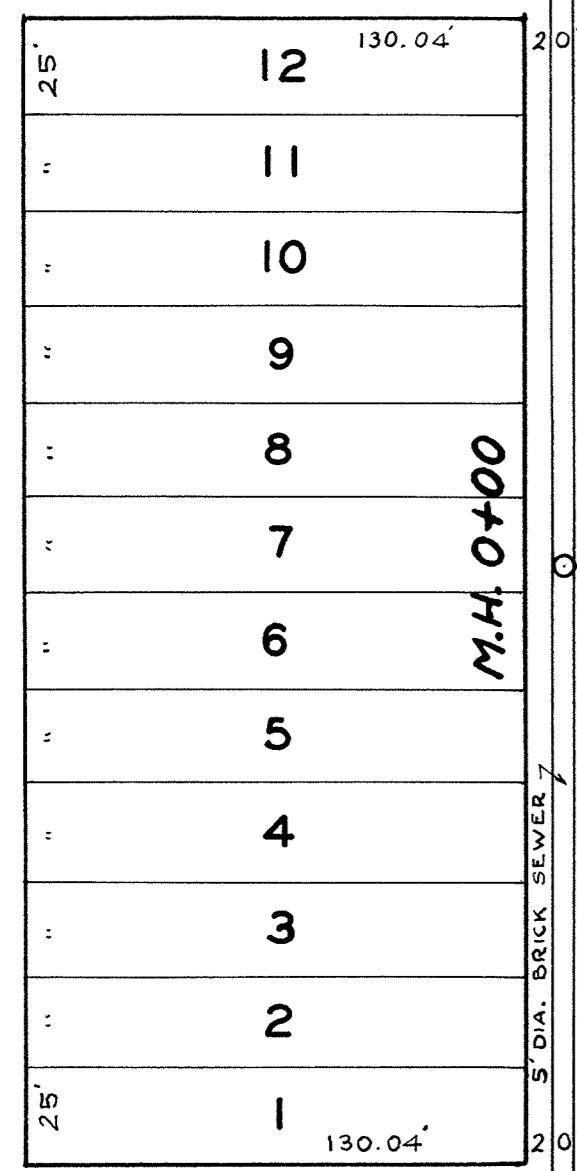
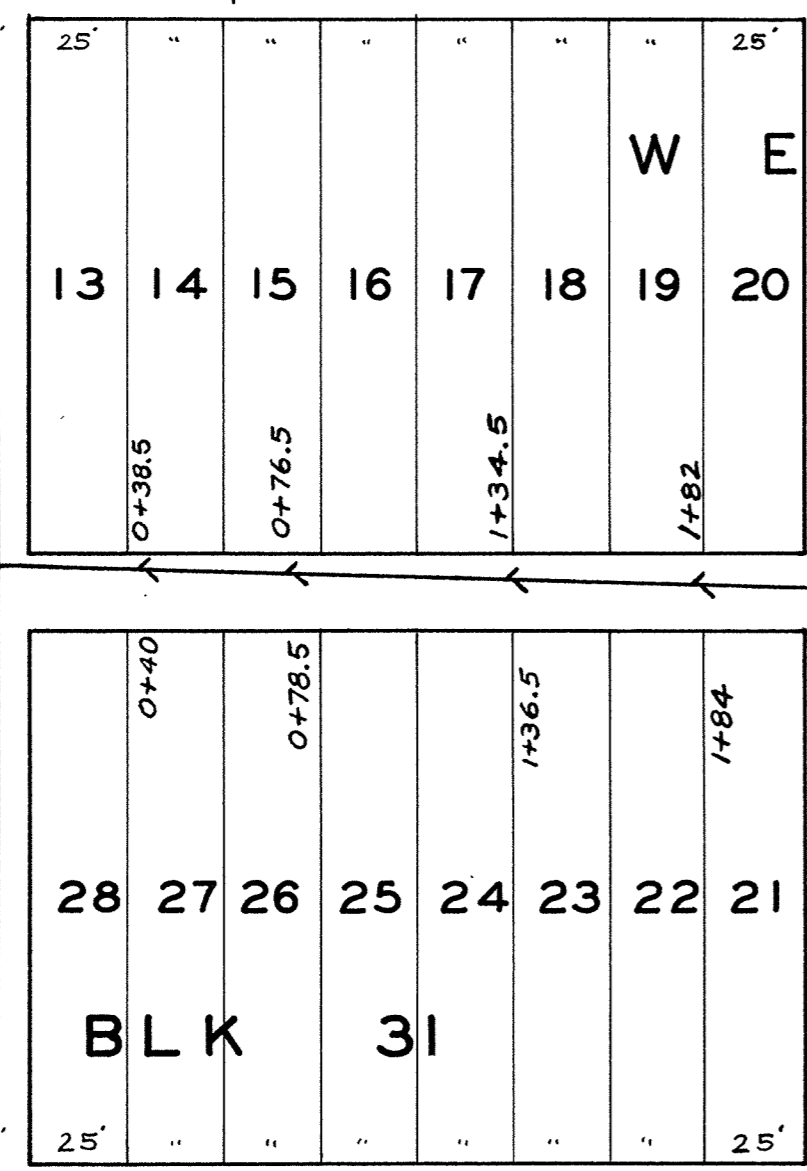


CENTRAL AVE.

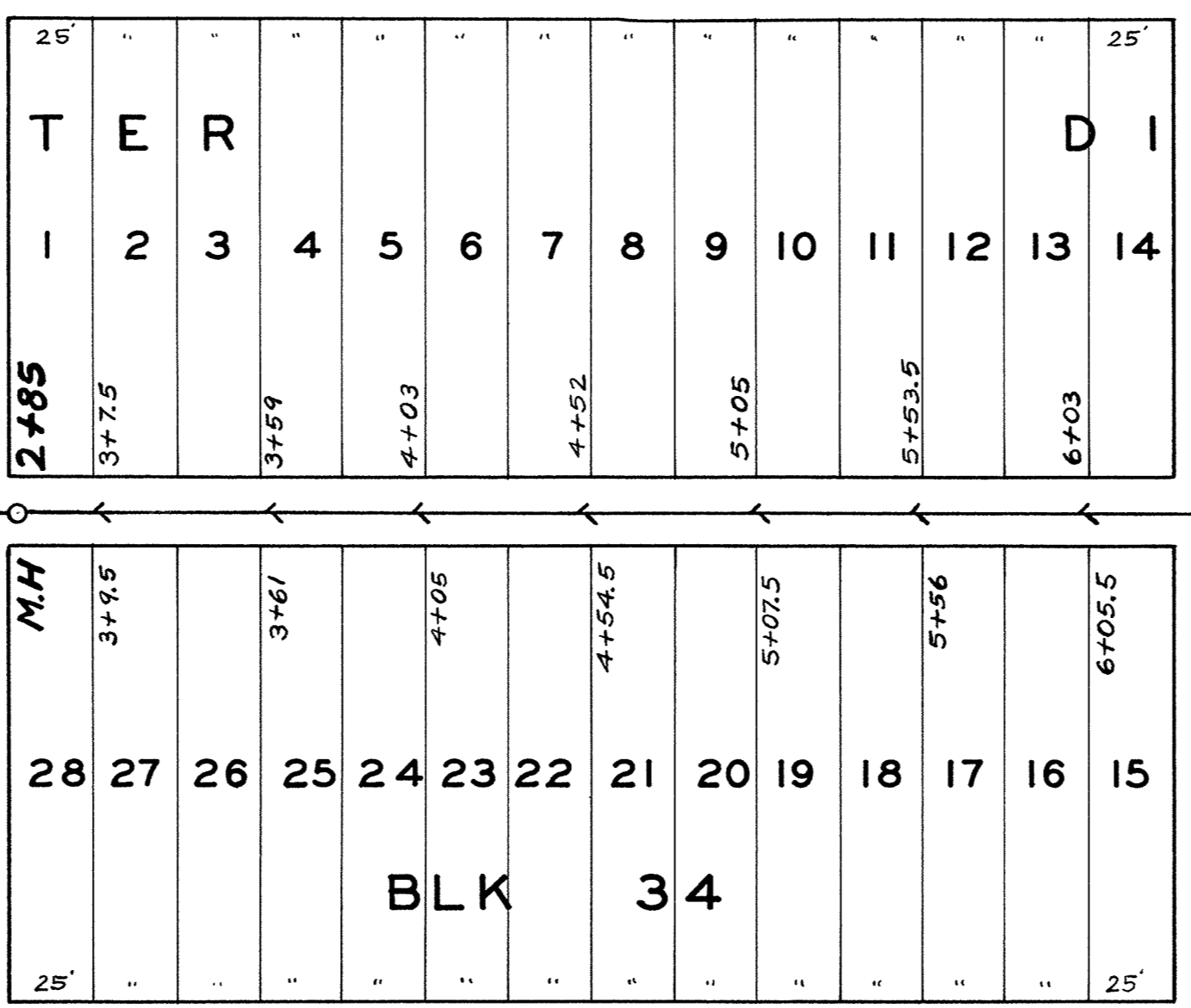


BAXTER

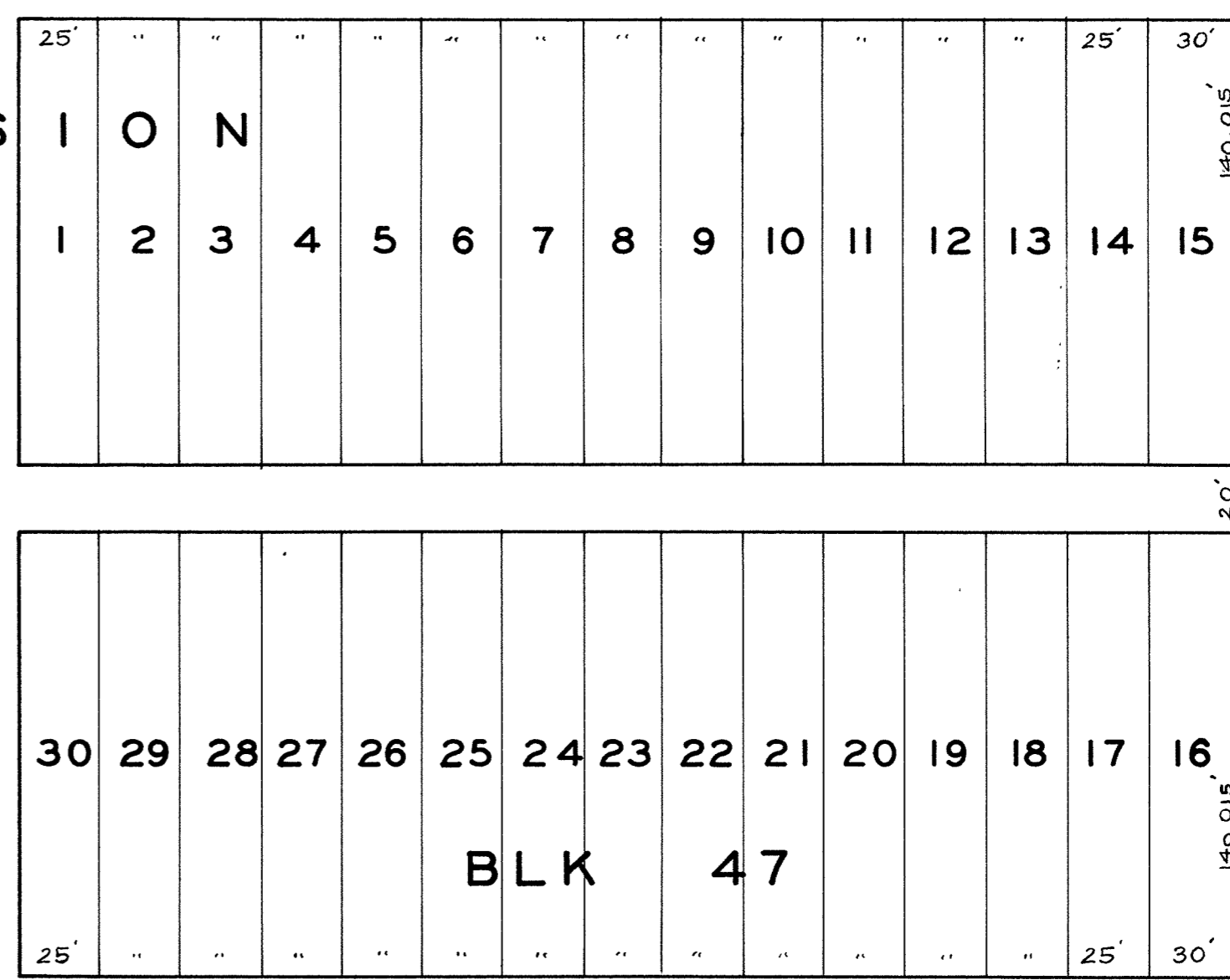
AVENUE



WEST DIVISION
62ND ST.



63RD M.H. 6+75
ST.



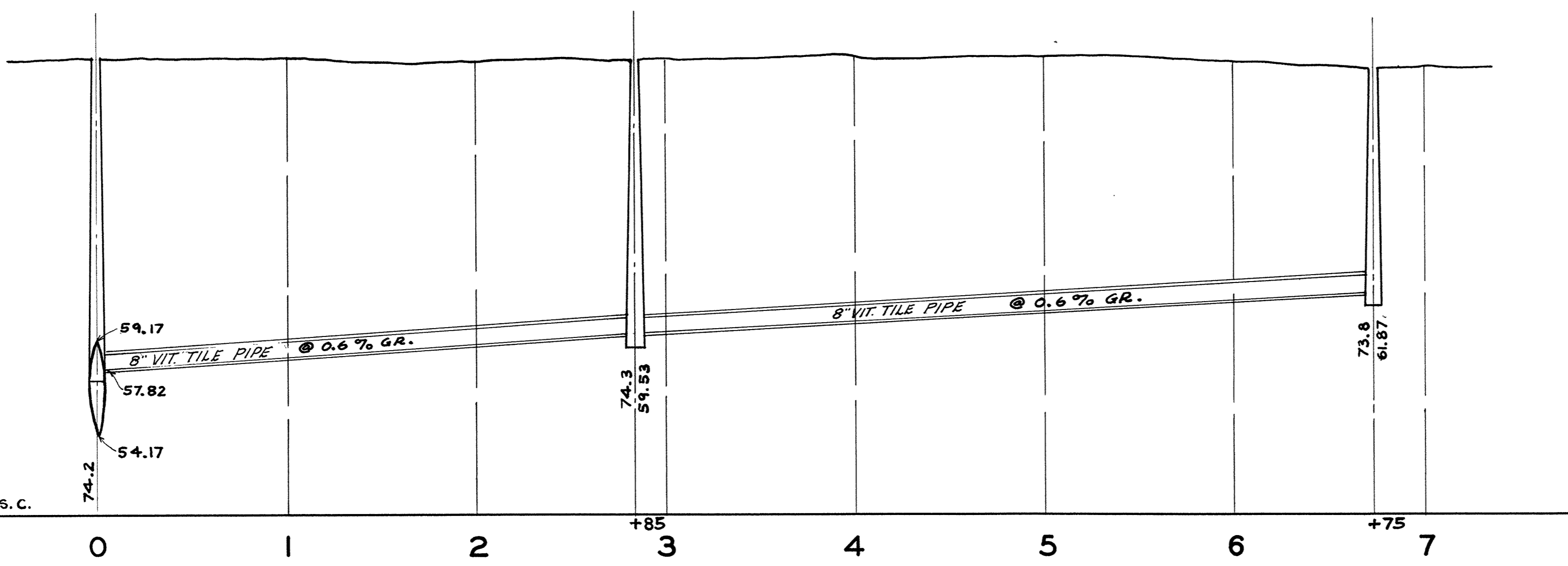
64TH ST.

CUMMING

AVENUE

CITY OF SUPERIOR
 PLAN AND PROFILE OF
SAN. SEWER EXTENSION
 WORKS PROGRESS ADM. W.P. NO. 9540
 JOB STARTED
 JOB COMPLETED
 HORIZONTAL SCALE 1" = 50'
 VERTICAL SCALE 1" = 5'
 SANITARY ENGINEER H. DANN
 CITY ENGINEER T. M. BASTERASH

50 FT. ABOVE U.S.C.
 +G.S. DATUM



5-43