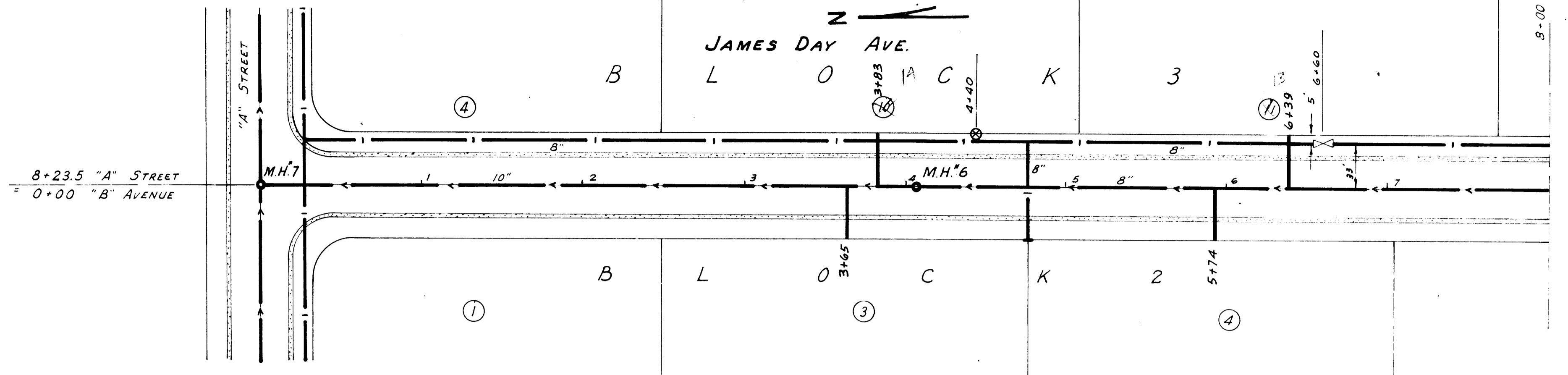


DATE	
BY	
PROJECT	
DESIGNED	
CHECKED	
DATE	
NOTE BOOK	
NO.	

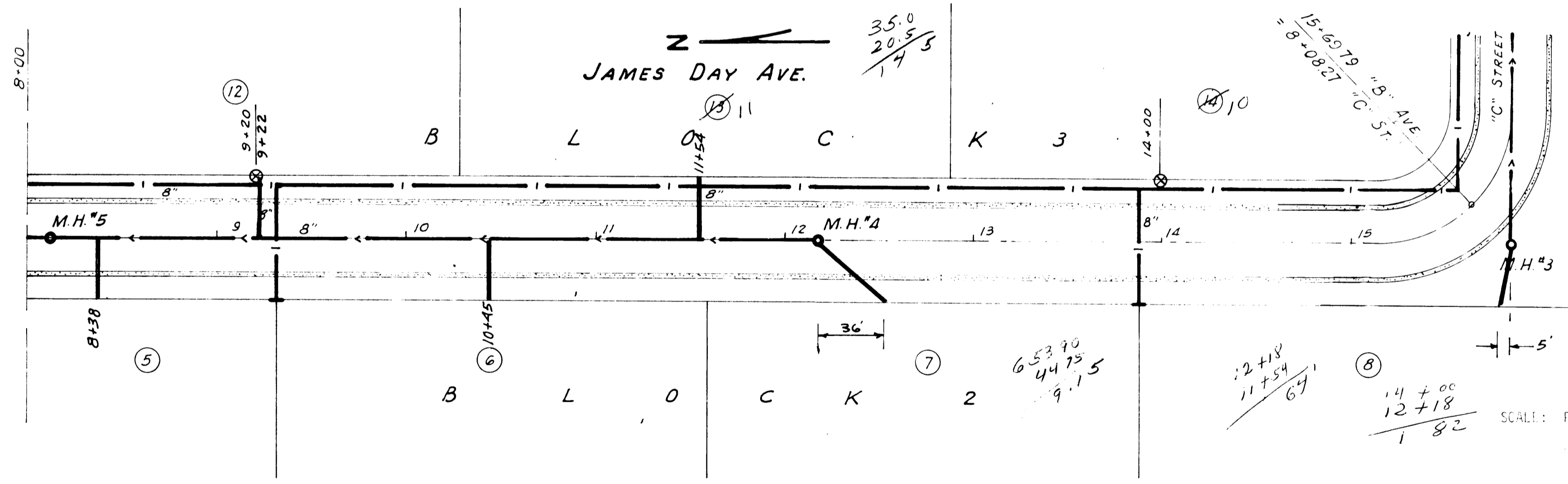
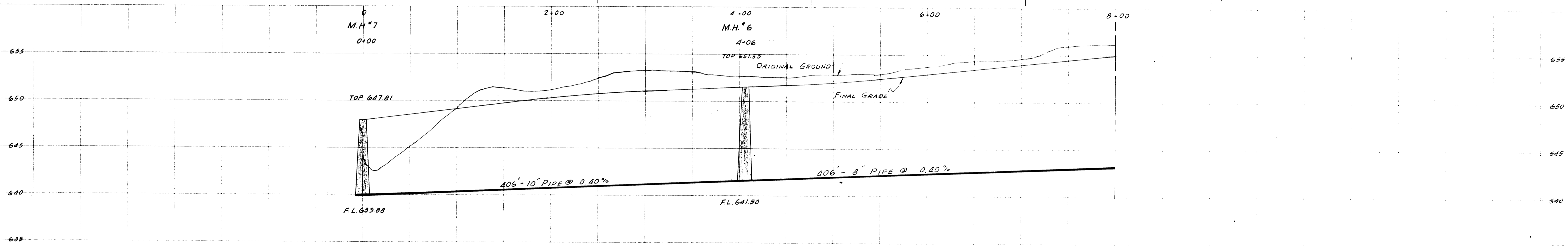
DATE	
BY	
PROJECT	
DESIGNED	
CHECKED	
DATE	
NOTE BOOK	
NO.	



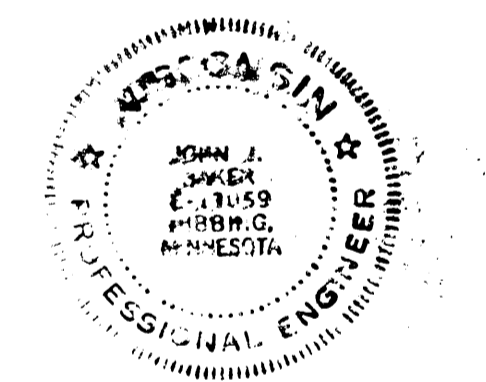
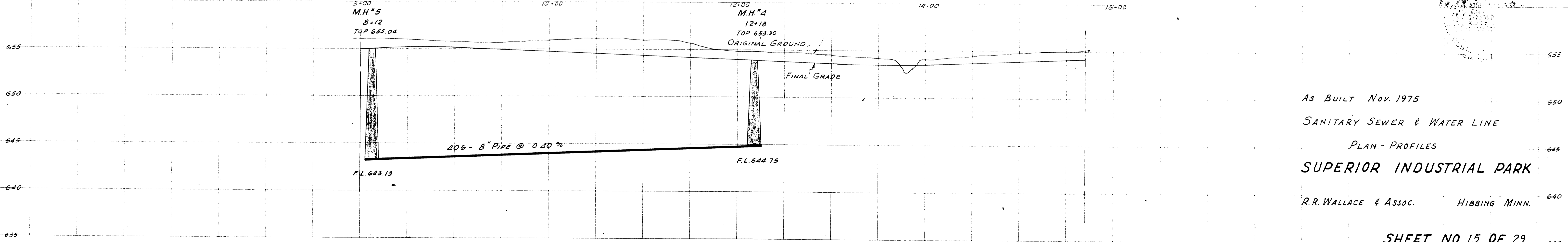
4406
3783
+29

LEGEND

Existing Sanitary Sewer	--- ---
Sanitary Sewer to Install	— —
Existing Water Line	--- ---
Water Line to Install	— —
Existing Manhole	○
Manhole to Install	●
Gate Valve to Install	⊗
Hydrant to Install	⊕



SCALE: Plan - 1" = 50'
 Profile - 1" = 50' Horizontal
 1" = 5' Vertical



I hereby certify that these plans and specifications were prepared by me or under my direct supervision and that I am a duly registered Professional Engineer under the laws of the State of Minnesota.

John J. Walker
 Hibbing, Minn.
 February 11, 1977

As BUILT Nov. 1975
 SANITARY SEWER & WATER LINE
 PLAN - PROFILES
 SUPERIOR INDUSTRIAL PARK
 R.R. WALLACE & ASSOC. HIBBING MINN.