

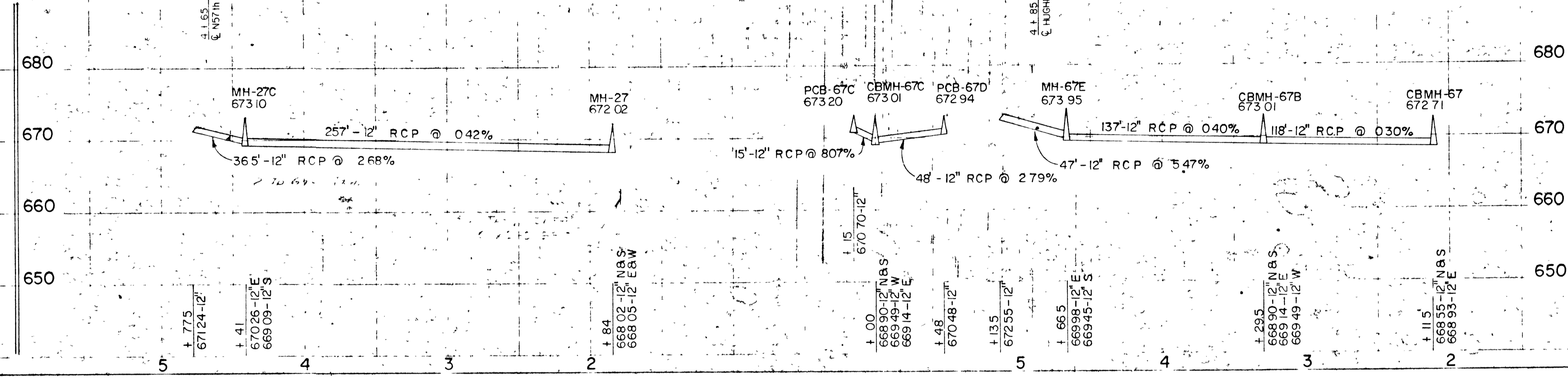
Scale 1"=200' Horiz

Scale 1"=50' Horiz  
1"=10' Vert.

SCHEDULE OF SANITARY MANHOLE COVER REPLACEMENT  
(BROADWAY ST. TO WINTER ST. & OAKES AVE. TO OGDEN)

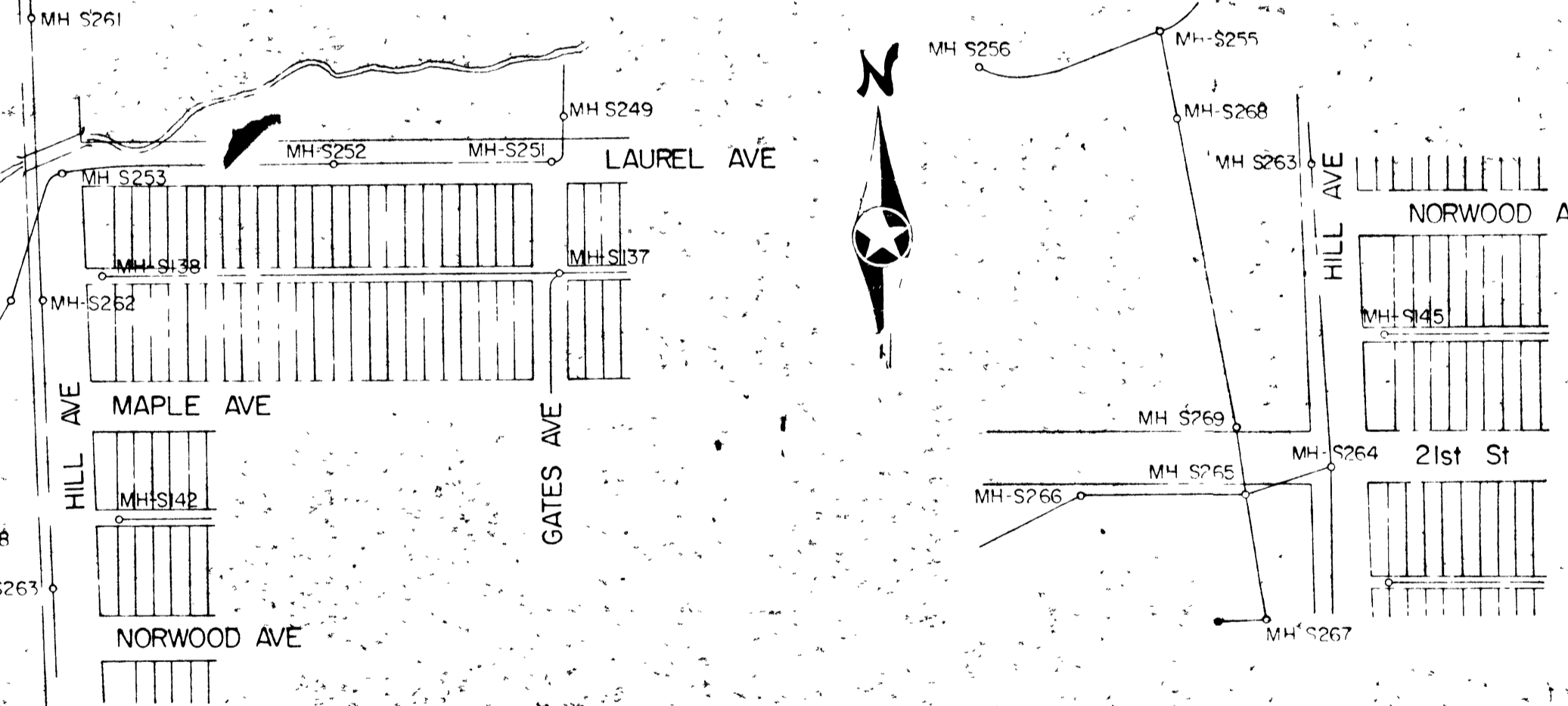
M.H. NO.	COVER TYPE
S92	XVI
S83	XI
S84	XI
S96	XVI
S97	VIII
S98	XV
S100	XVI
S99	VIII
S93	XVI
S94	VIII
S95	XVI

COVER TYPE	DIAMETER	THICKNESS	NO. REQUIRED
I	25 3/4"	2"	51
II	25 1/2"	2"	2
III	25 1/2"	1 1/2"	1
IV	24 1/4"	1 1/2"	1
V	23 1/4"	1 1/2"	1
VI	25"	1"	2
VII	24"	1"	4
VIII	25 3/8"	1"	4
IX	25 3/4"	1"	1
X	24 3/8"	1"	1
XI	23 3/4"	2"	2
XII	24 1/2"	1 1/2"	2
XIII	25 1/4"	1 1/2"	1
XIV	25 3/4"	1 1/2"	1
XV	24 1/4"	1"	4
XVI	25 1/4"	1"	4
XVII	25 1/2"	1"	3



SCHEDULE OF SANITARY MANHOLE COVER REPLACEMENT  
(HILL AVE. & N 21ST STREET)

M.H. NO.	COVER TYPE
S251	XVI
S254	XVII
S255	III
S256	I
S257	XVI
S258	XIV
S259	VII
S264	II
S262	I
S263	I
S265	IX
S266	XVII
S267	II
S268	I
S269	XI



Scale 1"=200' Horiz

SCHEDULE OF HILL AVENUE SANITARY MANHOLE REPAIRS

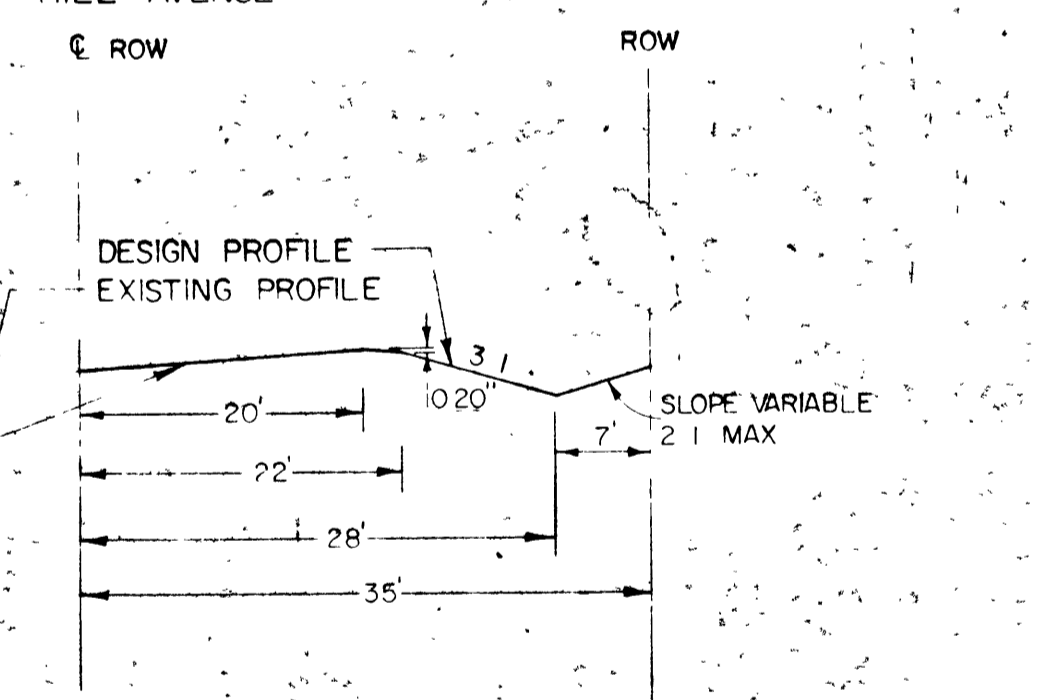
Sections to be grouted	# Joints	First M.H. listed being	Footage Tested & Sealed
MH-353 to MH-352			
-352 -351	4	29 4, 53 2, 193, 196	
-351 -350			
-349 -350			
-348 -349	1	90 7	
-347 -348			375'
-346 -347	3	360, 356, 352	371'
-345 -346	10	352, 344, 340 3, 336, 330 2, 326 3	last 100'
-345 -344		320, 317, 302 6	
-343 -344			
-343 -342	12	118 5, 126, 130, 135, 238, 242, 122 6	
-342 -341	10	217 5, 229, 170, 174, 249 2	275'
-341 -340	1	131 6, 135 6, 166 5, 175 3, 175 to 184, 298 2, 302, 330	399'
			last 100'

Sections to be grouted	# Joints	First M.H. listed being	Footage Tested & Sealed
MH-338 to MH-337	3	132, 149, 303	
-337 -336	3	368, 373, 376	
-336 -335	11	93 to 121, 5.6, 13 4, 232 7	
-335 -334			
-333 -334			
-332 -333			
-332 -331			
-331 -331			
-330 -331	7	191, 254, 262, 265, 249, 306, 339	
-330 -329	3	136.2, 214, 287	
-329 -328			
-328 -327			
-327 -326			
-326 -325			
-325 -324	4	54, 92, 148, 168	
-324 -323			
-323 -322			
-322 -321			

SCHEDULE OF HILL AVENUE (CONT'D)

Sections to be grouted	# Joints	First M.H. listed being	Footage Tested & Sealed
MH-321 to MH-320	7	77, 125, 142, 181, 193, 265, 328	
-320 -319	2	20, 72	
-319 -318			
-318 -317	3	107, 127, 289	
MH-317 to MH-316			
-316 -315			
-314 -313			
-313 -312			
-312 -311			
-311 -310			
-310 -309	1	335 7	
-309 -308			
-308 -307			
-307 -306			
-306 -305			
MH-305 to MH-304			

TYPICAL BERM SECTION



SCHEDULE OF HILL AVE SANITARY MANHOLE COVER REPLACEMENT

M.H. NO.	COVER TYPE	M.H. NO.	COVER TYPE	M.H. NO.	COVER TYPE
304	I	325	VI	350	I
305	I	326	I	351	I
306	VII	327	I	352	I
307	I	328	I	353	I
307A	I	329	I		
308	I	330	I		
308A	Exist	331	VII		
309	I	332	I		
310	I	333	I		
311	I	334	I		
312	I	335	I		
312A	Exist	336	I		
313	I	337	I		
314	I	338	I		
315	I	339	I		
316	I	340	I		
316A	Exist	341	I		
317	I	342	I		
318	I	342A	VII		
319	I	343	I		
320	I	344	I		
321	I	345	I		
322	I	346	I		
323	I	347	I		
324	I	348	I		
		349	I		