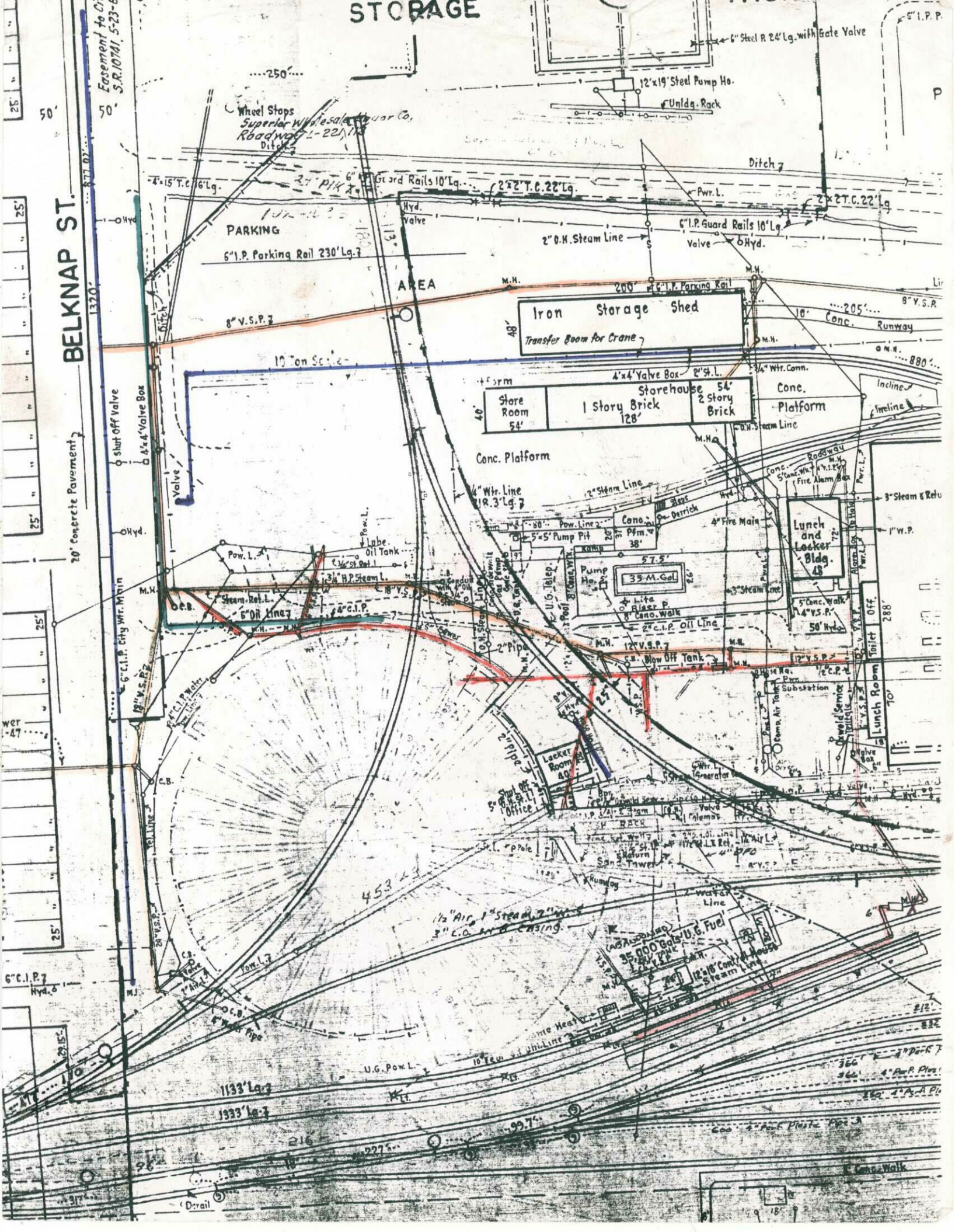


STORAGE



BELKNAP ST.

20' concrete Pavement

50'

50'

25'

25'

25'

25'

25'

25'

25'

Easement to City
S.R. 10741, 5-23-6

1320'

1320'

1320'

1320'

1320'

1320'

Wheel Stops
Superior Wholesale Tread Co.
Roadway 2-22-113
Ditch

PARKING
6" I.P. Parking Rail 230' Lg.

AREA
8" V.S.P.
10' on Sec. 2

Store Room 54'
1 Story Brick Storehouse 54' x 128'
2 Story Brick Storehouse 54' x 128'

Conc. Platform
4" Wtr. Line 18.3' Lg.

35 M. Gal. Tank
Life Jacket
8' Conc. Walk
2" C.I.P. Oil Line

Locker Room 40'
Office
5' x 10' x 10'

35,000 Gals U.G. Fuel Tank
2" Wtr. Cont. House
Steam Line

1133' Lg.
1333' Lg.
99.7'

216
227

Iron Storage Shed
Transfer Room for Crane

Store Room 54'
1 Story Brick Storehouse 54' x 128'
2 Story Brick Storehouse 54' x 128'

Lunch and Locker Bldg. 48'

35 M. Gal. Tank

Locker Room 40'

35,000 Gals U.G. Fuel Tank

2" Wtr. Cont. House

1133' Lg.
1333' Lg.

453

1 1/2" Air & Steam 2" Wtr. 3" C.O. and casing

35,000 Gals U.G. Fuel Tank

2" Wtr. Cont. House

Steam Line

10' Wtr. Cont. House

2" Wtr. Cont. House

2" Wtr. Cont. House

2" Wtr. Cont. House

6" I.P.P.
P

Ditch 7

6" I.P. Guard Rails 10' Lg. Valve 6 Hyd.

10' Conc. Runway

3" Steam & Retu

1" W.P.

5' Conc. Walk 14" V.S.P.

50' Hyd.

12" V.S.P.

12" V.S.P.

212'

232'

356'

366'

382'

400'

412'

422'

432'

442'

452'

462'

472'

482'

492'

502'

512'

522'

532'

542'

552'

562'

572'

582'

592'

602'

612'

622'

632'

642'

652'

662'

672'

682'

692'

702'

712'

722'

732'

742'

752'

762'

772'

782'

792'

802'

812'

822'

832'

842'

852'

862'

872'

882'

892'

902'

912'

922'

932'

942'

952'

962'

972'

982'

992'

1002'