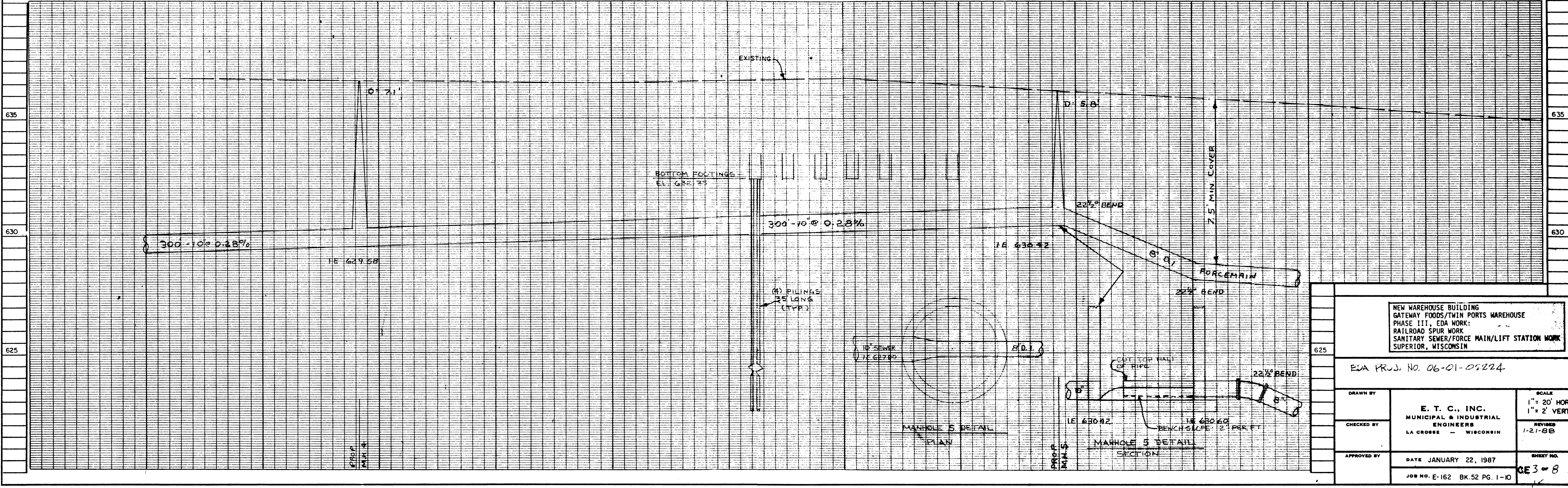
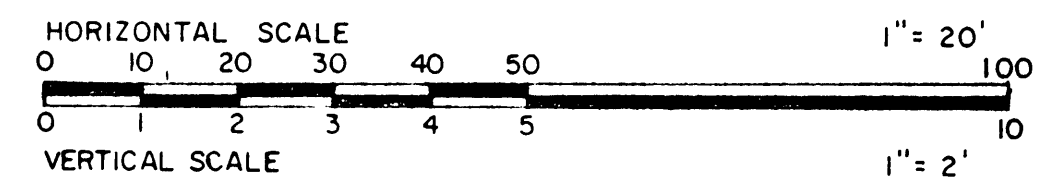
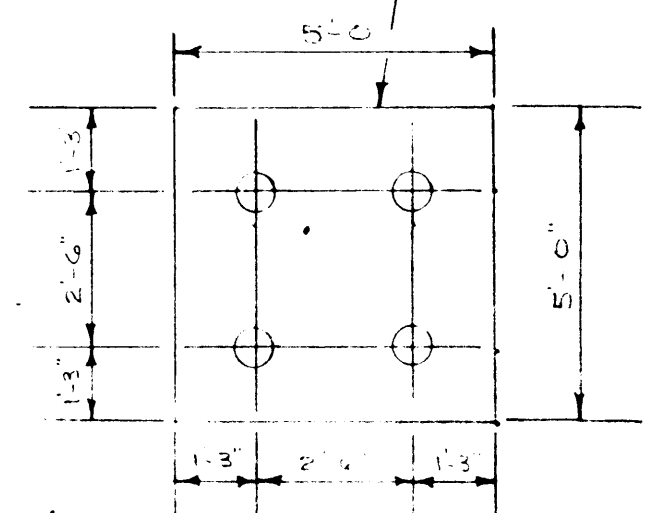
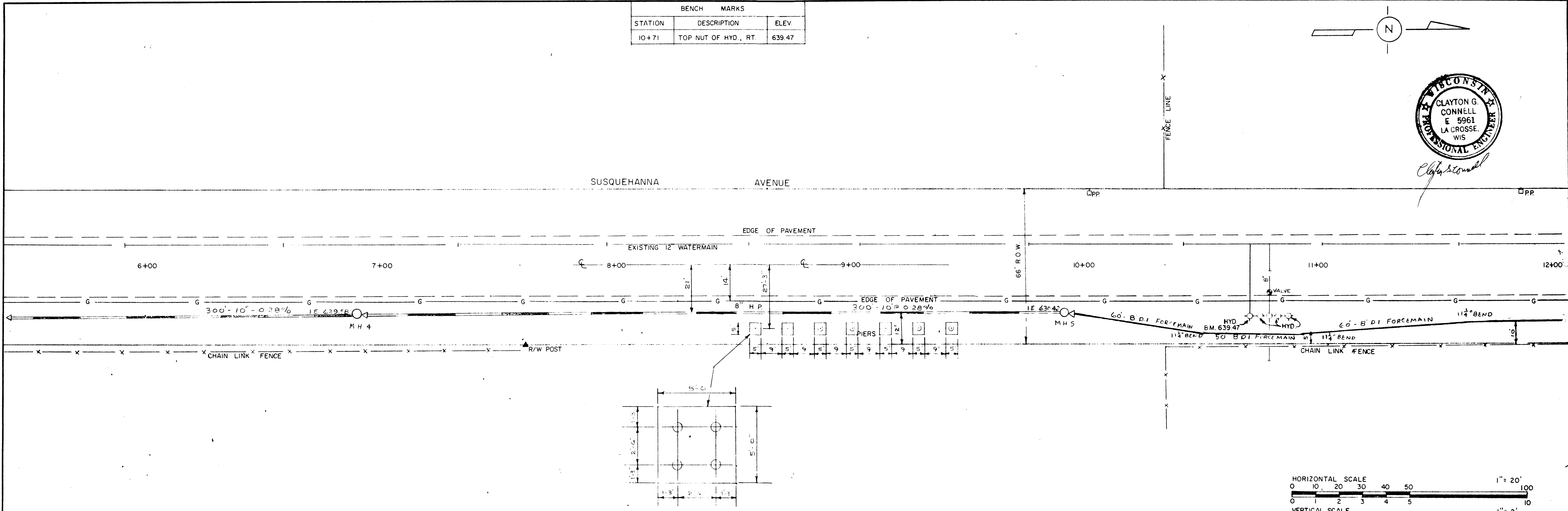
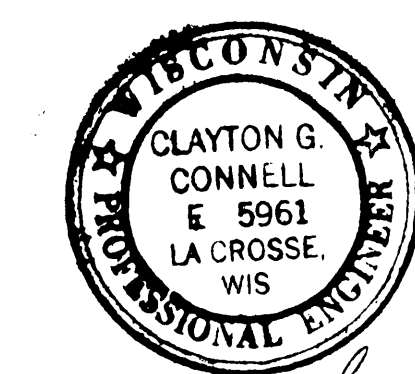
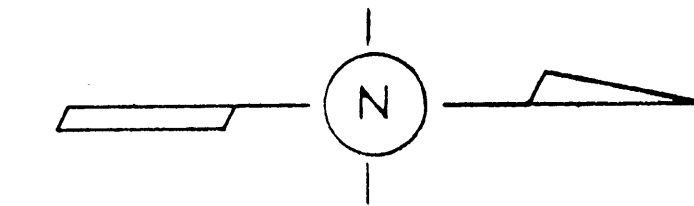


BENCH MARKS		
STATION	DESCRIPTION	ELEV.
10+71	TOP NUT OF HYD., RT.	639.47



NEW WAREHOUSE BUILDING GATEWAY FOODS/TWIN PORTS WAREHOUSE PHASE III, EDA WORK: RAILROAD SPUR WORK SANITARY SEWER/FORCE MAIN/LIFT STATION WORK SUPERIOR, WISCONSIN		
EIA PROJ. NO. 06-01-01224		
DRAWN BY	E. T. C., INC. MUNICIPAL & INDUSTRIAL ENGINEERS LA CROSSE - WISCONSIN	SCALE 1" = 20' HOR 1" = 2' VERT.
CHECKED BY		REVISED 1-21-88
APPROVED BY	DATE JANUARY 22, 1987	SHEET NO. CE 3 OF 8
JOB NO. E-162 BK. 52 PG. 1-10		