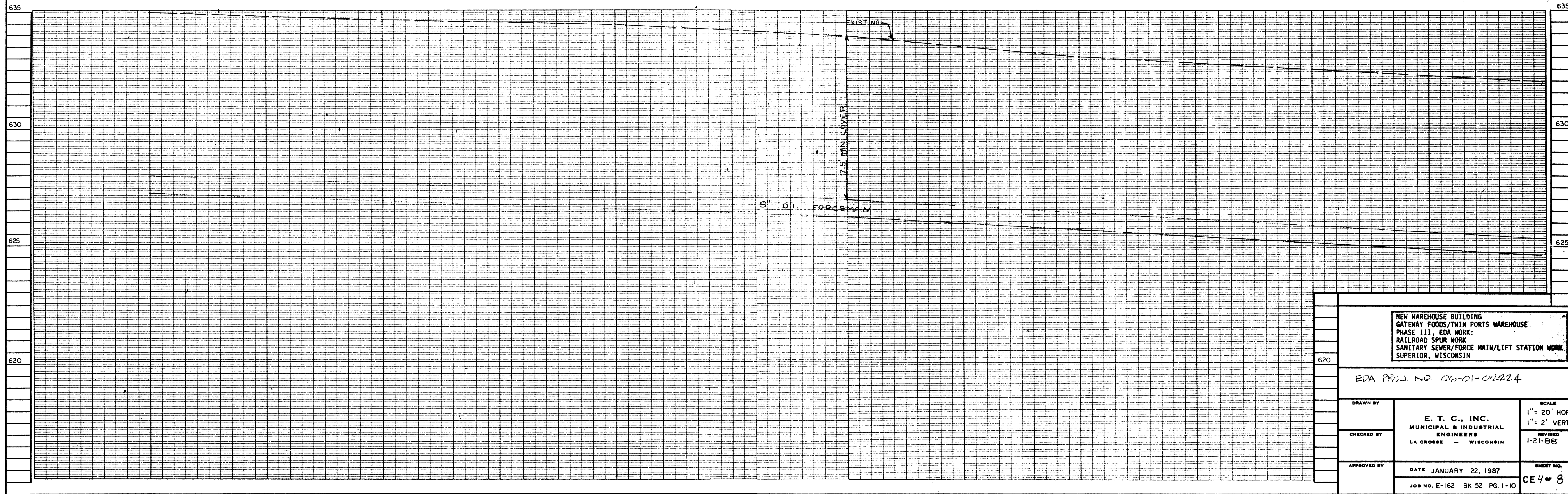
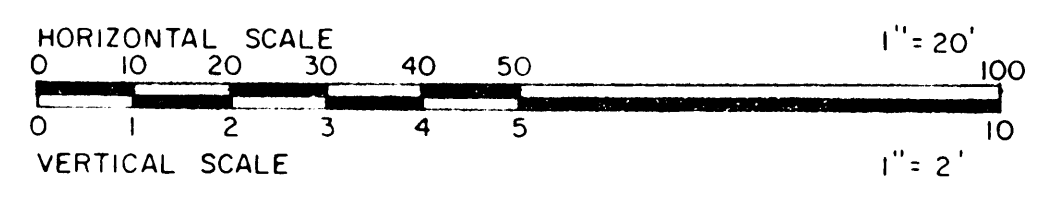
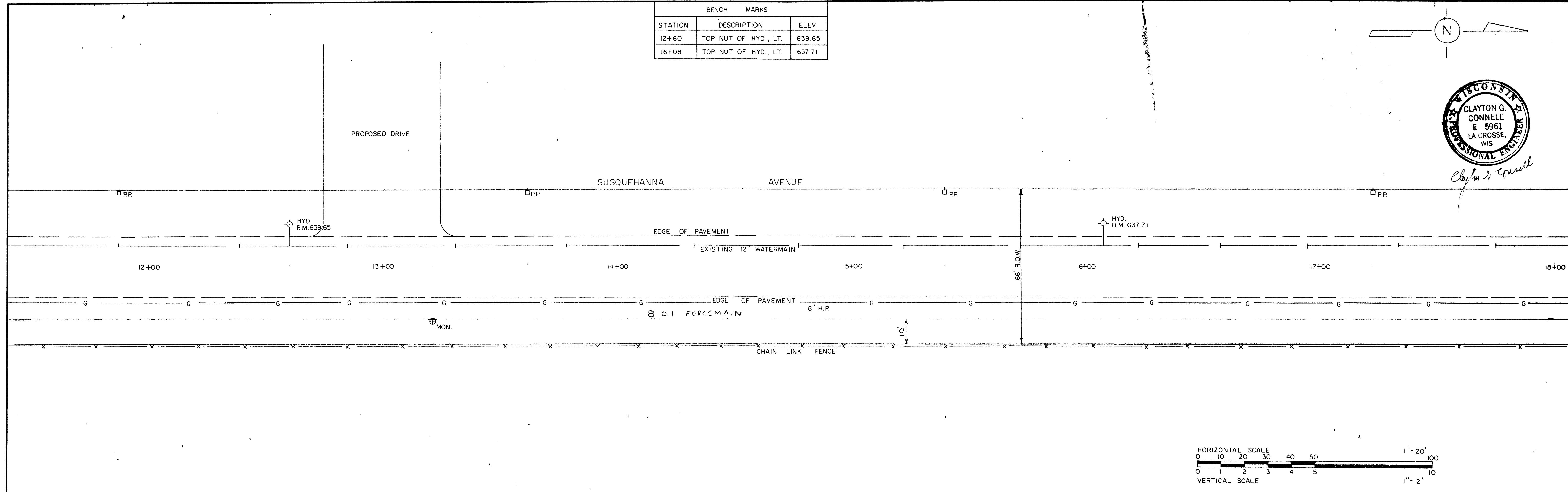
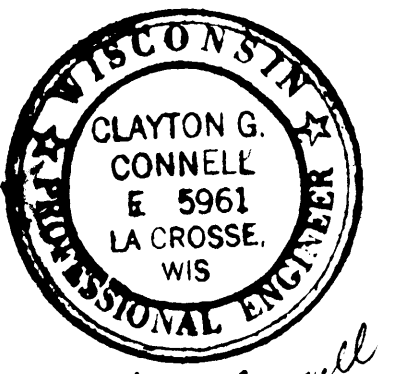
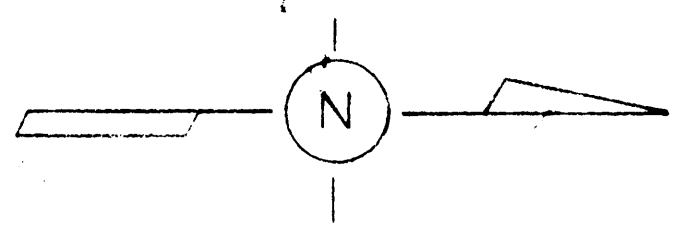


BENCH MARKS		
STATION	DESCRIPTION	ELEV.
12+60	TOP NUT OF HYD., LT.	639.65
16+08	TOP NUT OF HYD., LT.	637.71



NEW WAREHOUSE BUILDING GATEWAY FOODS/TWIN PORTS WAREHOUSE PHASE III, EDA WORK: RAILROAD SPUR WORK SANITARY SEWER/FORCE MAIN/LIFT STATION WORK SUPERIOR, WISCONSIN		
EDA PROJ. NO. 06-01-02224		
DRAWN BY  CHECKED BY  APPROVED BY	<b>E. T. C., INC.</b> MUNICIPAL & INDUSTRIAL ENGINEERS LA CROSSE - WISCONSIN	SCALE 1" = 20' HOR. 1" = 2' VERT. REVISED 1-21-88 SHEET NO. <b>CE 4 of 8</b>
DATE JANUARY 22, 1987 JOB NO. E-162 BK. 52 PG. 1-10		SHEET NO. <b>CE 4 of 8</b>