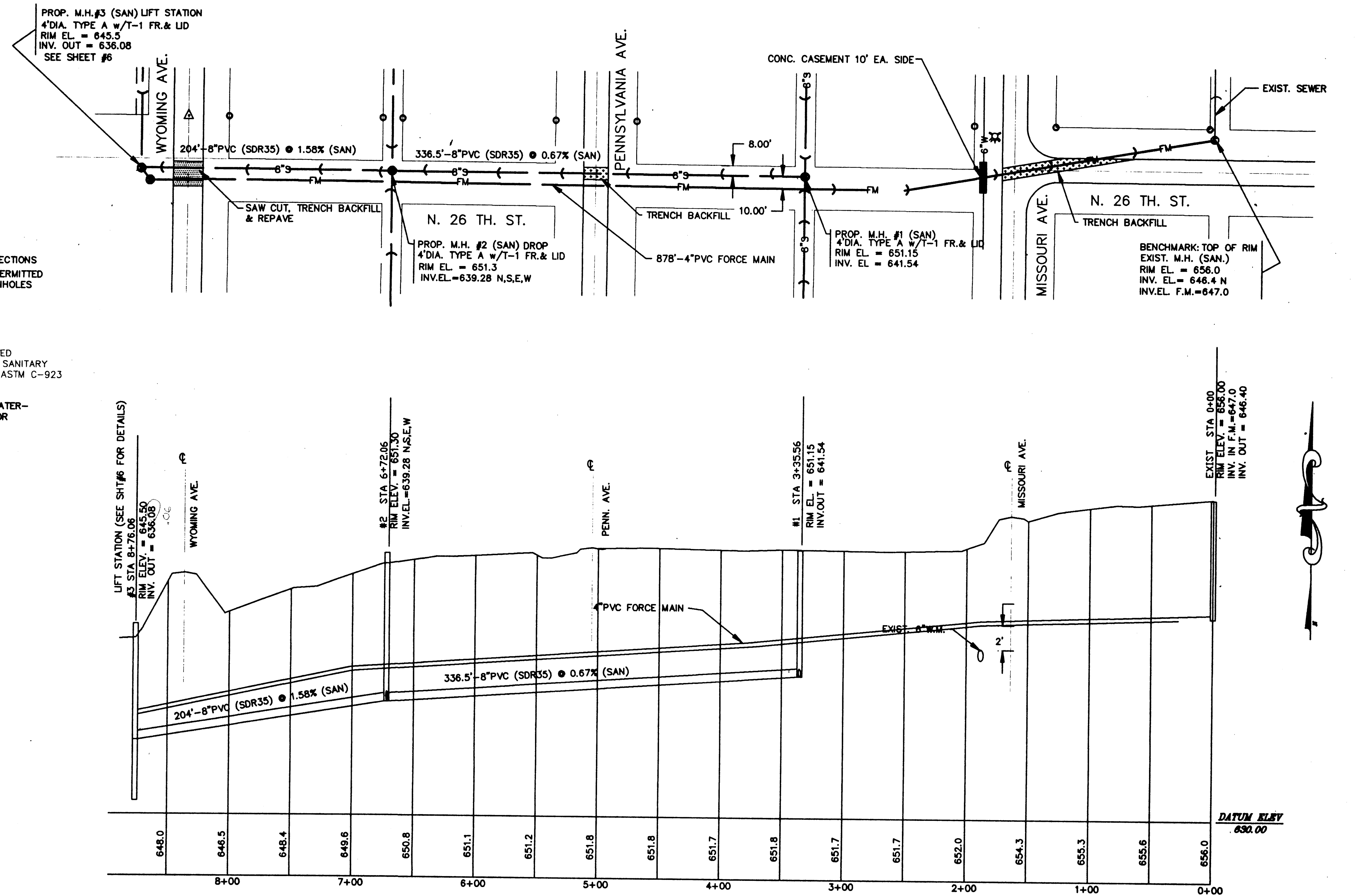
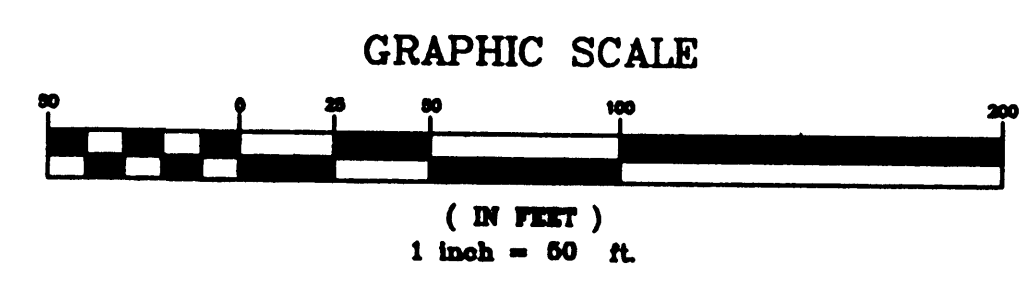


TYPICAL MANHOLE TYPE "A"  
N.T.S.



NOTES:

1. PRECAST CONCRETE RISER RINGS AND CONES SHALL COMPLY WITH TESTS STRENGTHS- A.S.T.M. C-39. ADJUSTMENT RINGS SHALL NOT EXCEED 8" IN HEIGHT.
2. MINIMUM WALL THICKNESS SHALL BE 5" AND MINIMUM CIRCULAR REINFORCEMENT SHALL BE 0.18 SQ. IN. PER FOOT.
3. THE BOTTOM MAY BE EITHER PRECAST WITH INVERTS AS INTEGRAL PART OR CAST IN PLACE WITH CLASS X CONCRETE.
4. ALL STEPS SHALL BE CAST IRON AND CONFORM WITH NEENAH STANDARDS R-1961-1 OR APPROVED EQUAL.
5. ALL JOINTS BETWEEN PRE-CAST ELEMENTS, ADJUSTING RINGS AND MANHOLE FRAMES ON ALL UNDERGROUND STRUCTURES, SHALL BE SET IN PLACE WITH ONE OF THE FOLLOWING BUTYL RUBBER JOINT SEALANTS: CONCRETE PRODUCTS SUPPLY CO.-EZ STIK ST B, HAMILTON-KENT GASKET CO.-KENT SEAL, OR EQUAL, AS APPROVED BY VILLAGE ENGINEERS, AND ALL JOINTS TO BE TUCKPOINTED WITH HYDRAULIC CEMENT.



NO.	DATE	DESCRIPTION	BY
1	1-19-93	LAYOUT	CRI

**CRI**

**C.R.I. ENGINEERING**

Civil Engineering  
Land Planning  
Construction Management

12 BADGER DRIVE SUPERIOR, WI. 54880  
(715) 394 7338

BILLINGS PARK SAN. SEWER EXT.  
PLAN & PROFILE

JAN. 8, 1992 SHEET #2