

NEW YORK AVENUE EXTENSION

**UTILITY OWNERS**  
 SUPERIOR WATER LIGHT & POWER COMPANY  
 1230 TOWER AVENUE  
 SUPERIOR, WI. 54880  
 (715) 394-5511  
 DAVE SMITH - ELECTRIC  
 DALE GROTHE - WATER & GAS

WISCONSIN BELL, INC.  
 304 SOUTH DEWEY STREET  
 EAU CLAIRE, WI. 54701  
 (715) 839-5819  
 VERN SCHULTZ - OSP

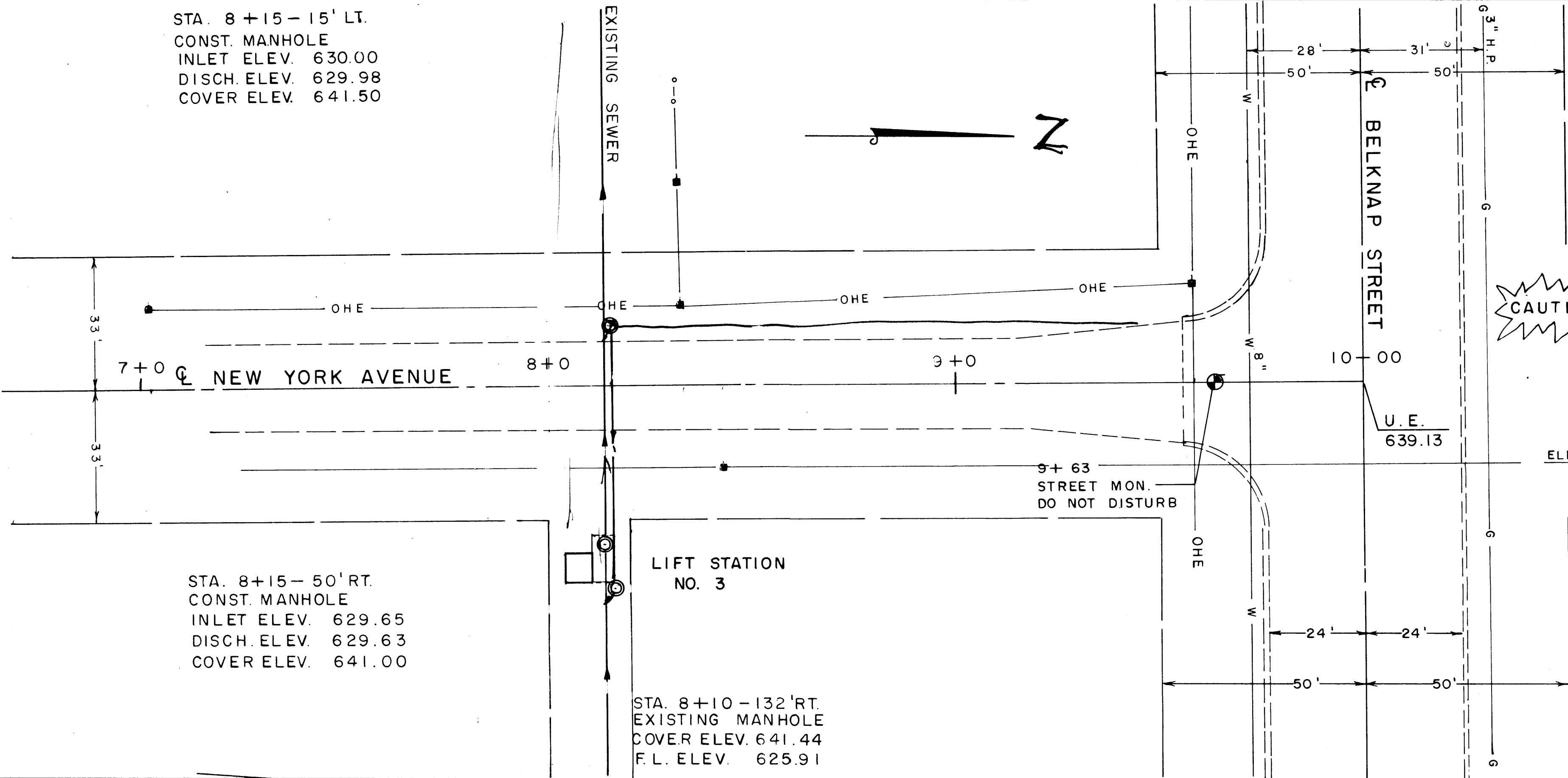
CITY OF SUPERIOR - DEPT. OF PUBLIC WORKS  
 1408 HAMMOND AVENUE  
 SUPERIOR, WI. 54880  
 (715) 394-0333  
 MIKE DENTON - ADM. ENGINEER

STA. 8+15 - 15' LT.  
 CONST. MANHOLE  
 INLET ELEV. 630.00  
 DISCH. ELEV. 629.98  
 COVER ELEV. 641.50

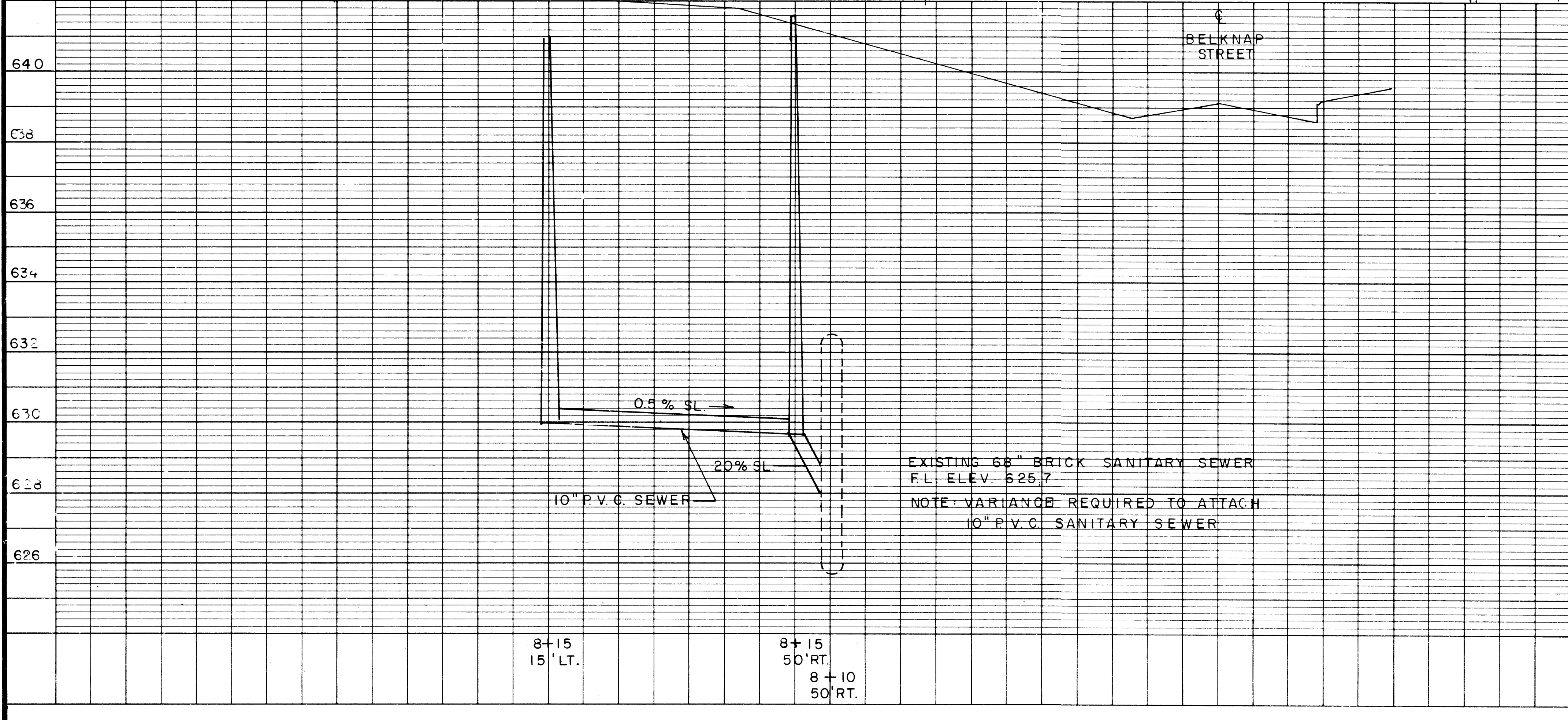
STA. 8+15 - 50' RT.  
 CONST. MANHOLE  
 INLET ELEV. 629.65  
 DISCH. ELEV. 629.63  
 COVER ELEV. 641.00

STA. 8+10 - 132' RT.  
 EXISTING MANHOLE  
 COVER ELEV. 641.44  
 F.L. ELEV. 625.91

LIFT STATION  
 NO. 3



**ORIGIN OF LEVELS**  
 CITY OF SUPERIOR P.B.M.  
 S.E. CORNER OF 18TH. & OHIO  
 BRASS DISK SET IN CONC.  
 IN CONC. CYLINDER  
 STAMPED 2194-67  
 ELEV. 638.980



EXISTING 68" BRICK SANITARY SEWER  
 F.L. ELEV. 625.7  
 NOTE: VARIANCE REQUIRED TO ATTACH  
 10" P.V.C. SANITARY SEWER

**DETAIL SUMMARY OF MISCELLANEOUS QUANTITIES**

|                                      |             |             |                        |
|--------------------------------------|-------------|-------------|------------------------|
| <b>ASPHALTIC BASE PATCHING</b>       |             |             |                        |
| 8+10 - 8+20                          | 27          | S.Y.        |                        |
| <b>CRUSHED AGGREGATE BASE COURSE</b> |             |             |                        |
| 8+10 - 8+20                          | 9           | C.Y.        |                        |
| <b>MANHOLES</b>                      |             | <b>EACH</b> |                        |
| 8+15 - 20' LT.                       | 1           |             |                        |
| 8+15 - 50' RT.                       | 1           |             |                        |
| <b>10" P.V.C. SEWER</b>              |             |             |                        |
| STA.                                 | TO STA.     | LIN. FT.    | GRANULAR BACKFILL C.Y. |
| 8+15-15'LT-                          | 8+15-50'RT. | 61          | 10                     |
| 8+10-50'RT.-EXIST.                   | SEWER       | 5           | 1                      |
| <b>TOTAL</b>                         |             | <b>66</b>   | <b>11</b>              |