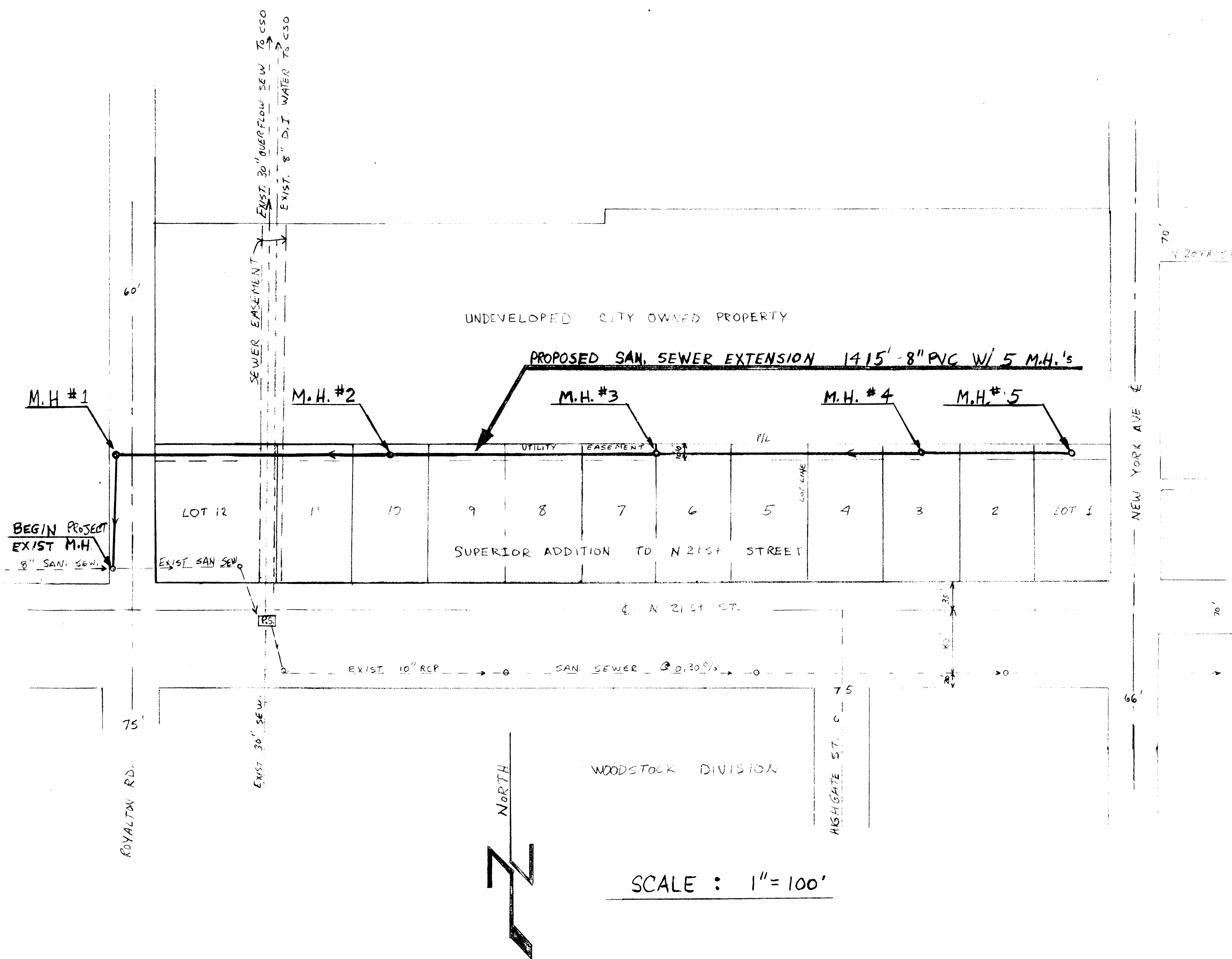
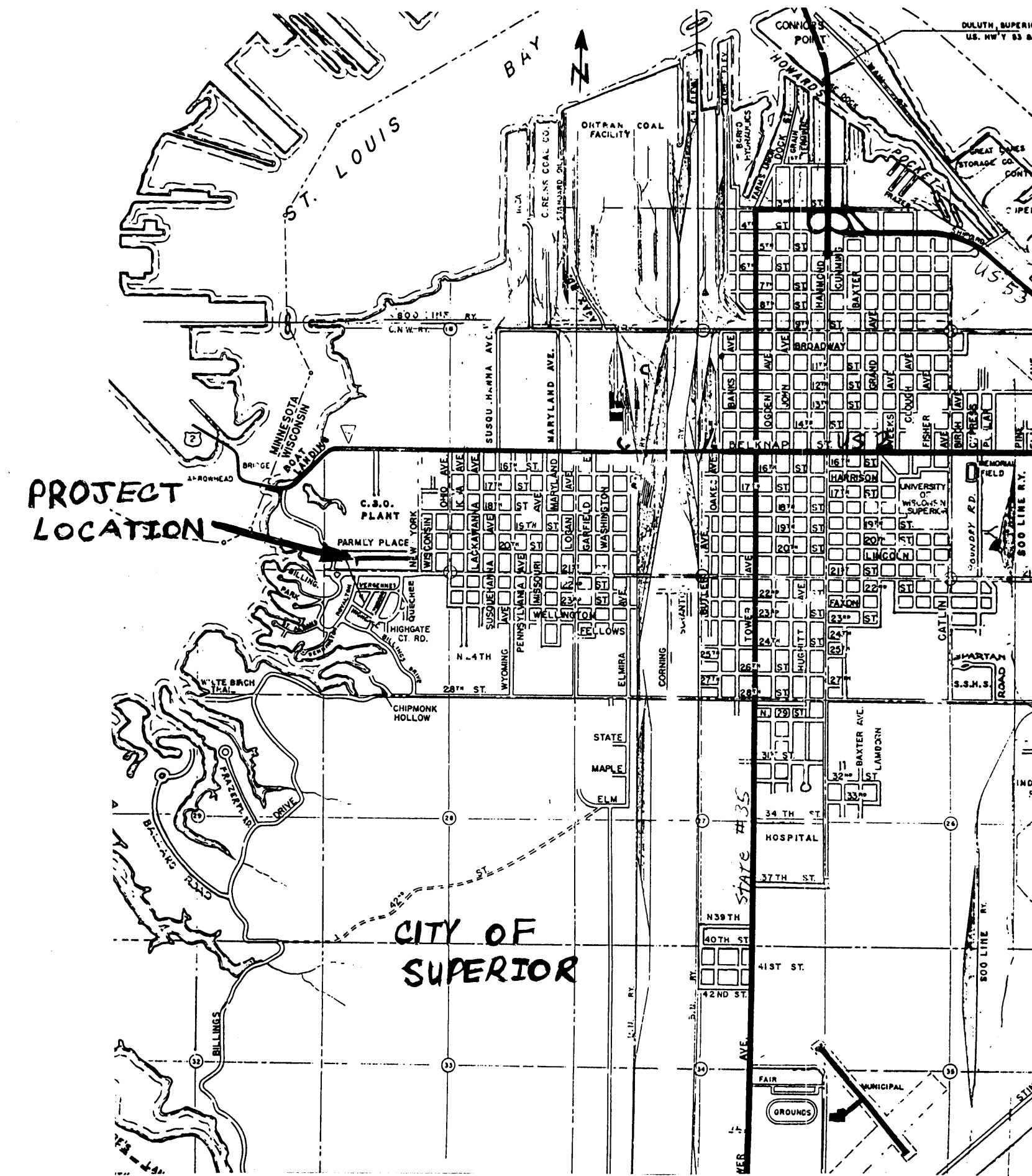


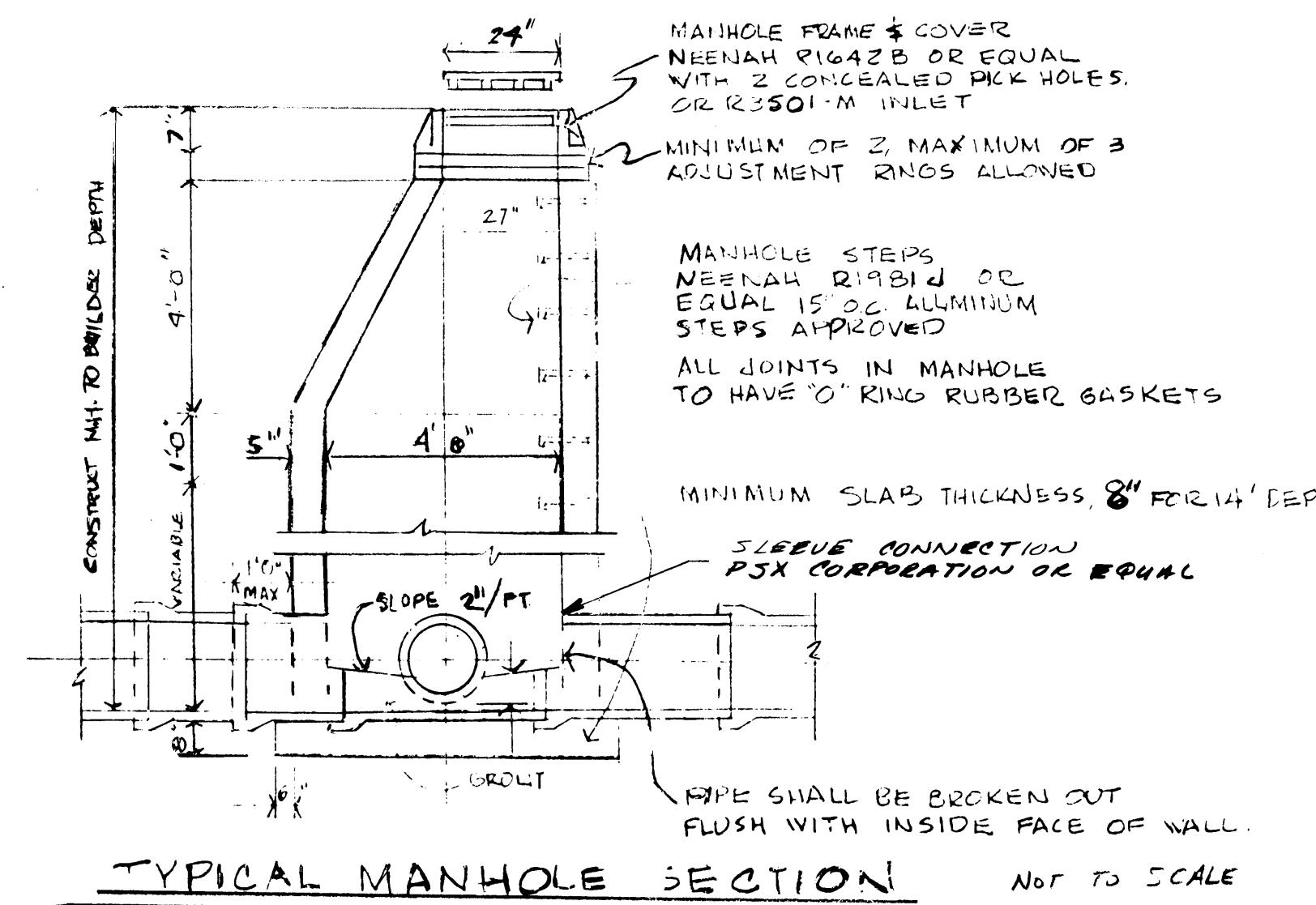
# PROPOSED SANITARY SEWER SUPERIOR ADDITION TO NORTH 21ST STREET SUPERIOR, WISCONSIN



LOCATION PLAN



LOCATION MAP



CONSTRUCTION NOTES :

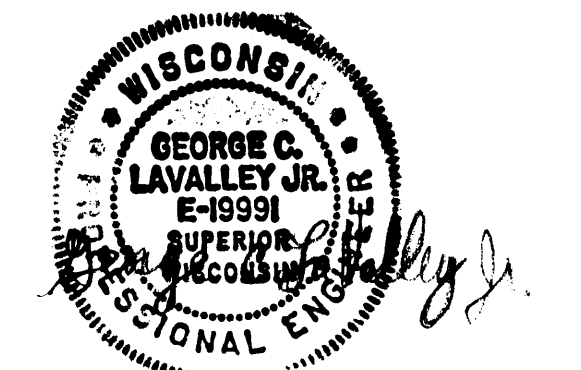
Utilities shown on these plans are approximate locations only.  
Contractor is responsible for all utility locations.  
CONTACT Superior Water Light and Power Company for all water, gas, and electric utility locations.

CONTACT Wisconsin Bell Telephone for all underground telephone cables.

CONTACT Group W Cable T.V. for all cable T.V. lines.

Contractor is responsible for coordination with all utility companies for all relocations, etc. for all underground or overhead utilities.  
Contractor is responsible for the cost of utility relocations unless specifically excluded elsewhere in the specifications.  
Contractor is responsible for all pavement crossings. Pavement shall be neatly sawcut. Subgrade and pavement shall be restored to the original condition.

Contractor shall coordinate with the City of Superior Public Works Department for location of City owned storm and sanitary sewers or other facilities. Contractor shall coordinate with the City Plumbing Inspector for construction of sanitary sewers.



GEORGE C. LAVALLEY, JR. P.E.

SANITARY SEWER EXTENSION IN THE  
SUPERIOR ADDITION TO N. 21st STREET

8" PVC SEWER SCALE AS SHOWN DRAWN BY GCL 2-15-87 REVISION

LOCATION PLANS, CONSTRUCTION  
DETAILS, LOCATION MAP

DATE APPROVED BY LEONARD M. PETERSON DRAWING NUMBER DIR. OF PUBLIC WORKS SHEET 1 OF 4