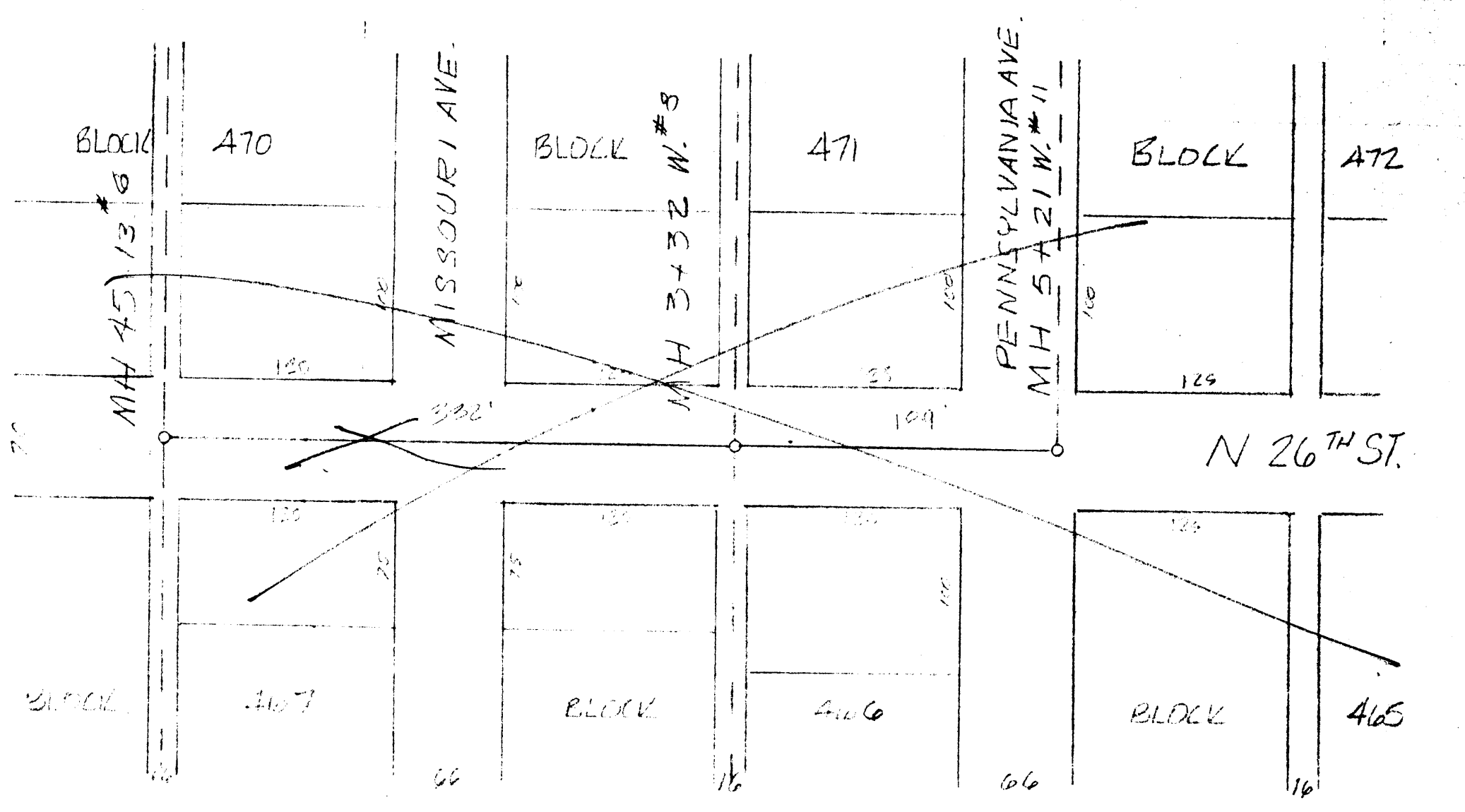
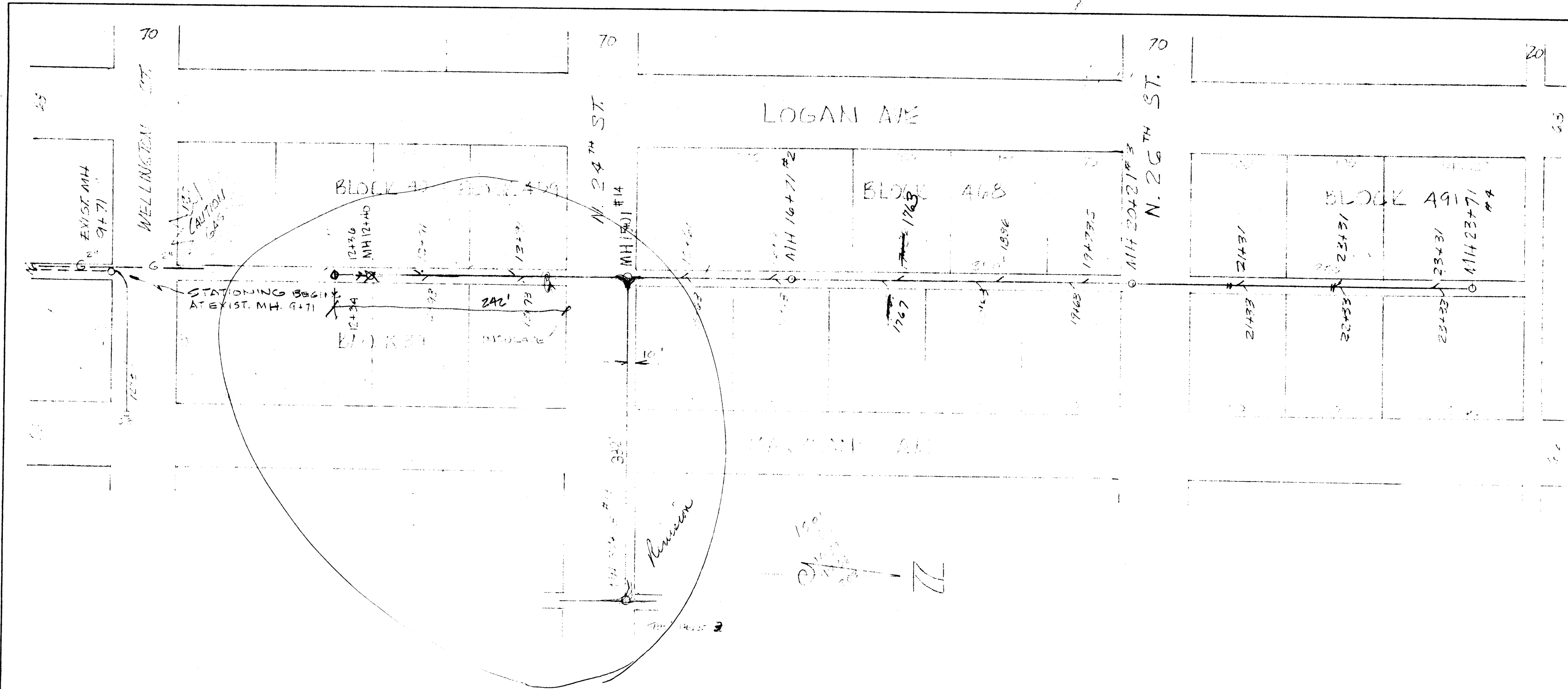
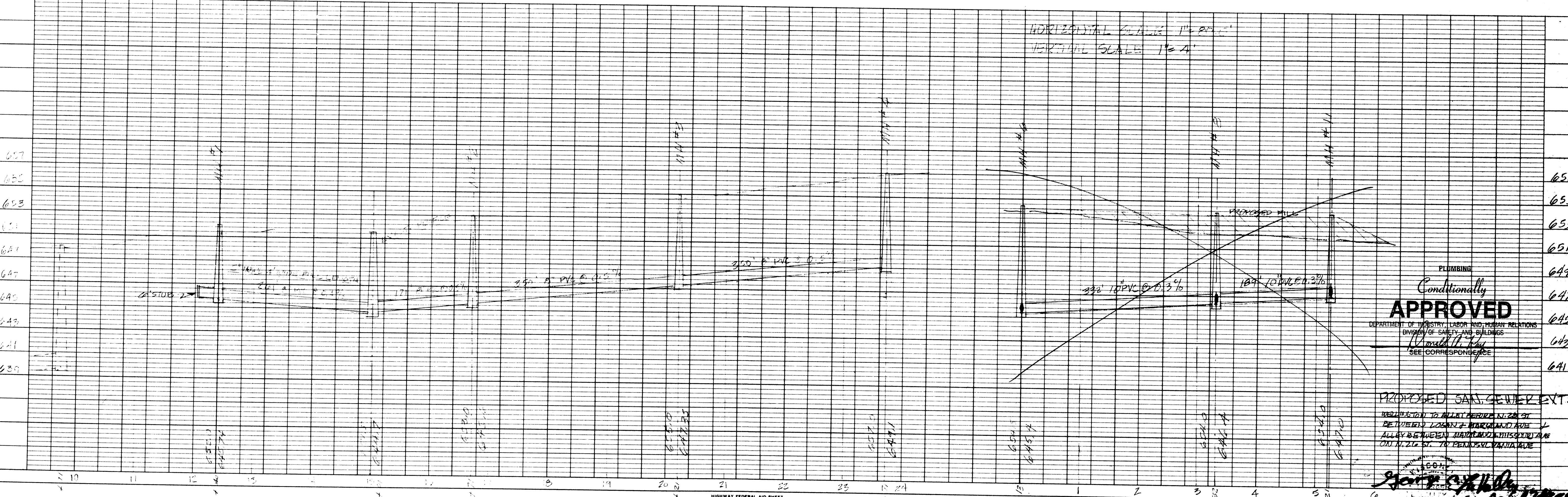


PLAN
 SURVEYED
 NOTE BOOK
 ALIGNMENT CHECKED
 BY: _____ DATE: _____
 NO. _____



PROFILE
 SURVEYED
 NOTE BOOK
 PLOTTED
 STRUCTURE NOTATIONS CHECKED
 BY: _____ DATE: _____
 NO. _____



PLUMBING
 Conditionally
APPROVED
 DEPARTMENT OF INDUSTRY, LABOR AND HUMAN RELATIONS
 DIVISION OF SAFETY AND BUILDINGS
 [Signature]
 SEE CORRESPONDENCE

PROPOSED SAN SEWER EXT.
 CONNECTION TO ALLEY PERFORMED BY
 BETWEEN LOGAN & MARKHAM AVE
 ALLEY BETWEEN MARKHAM & MISSOURI AVE
 ON N. 26th ST. TO PENNSYLVANIA AVE

8920051-R
 SHEET 2 of 3
 REV 4 17 89
 [Signature]
 April 1989