

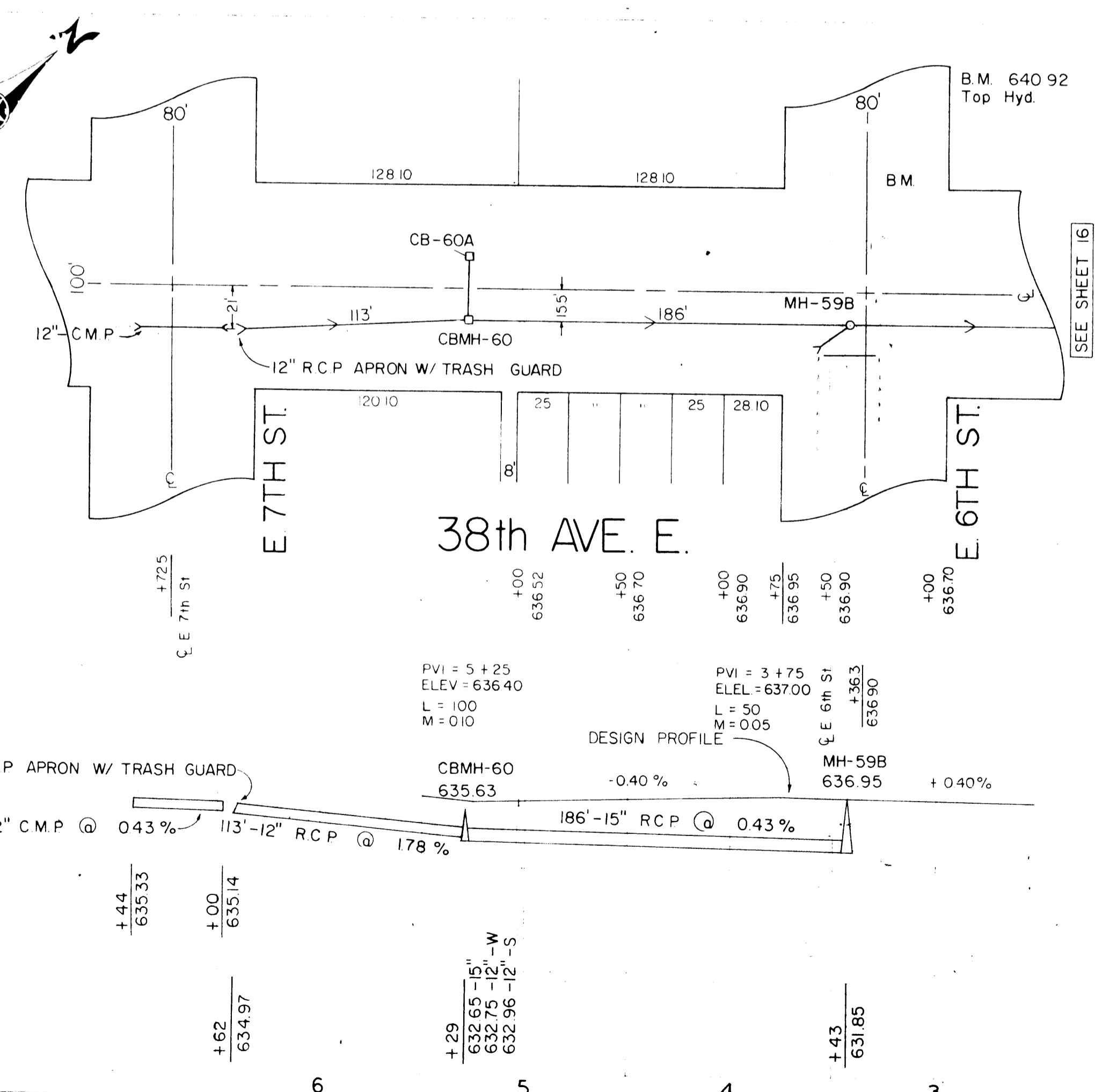
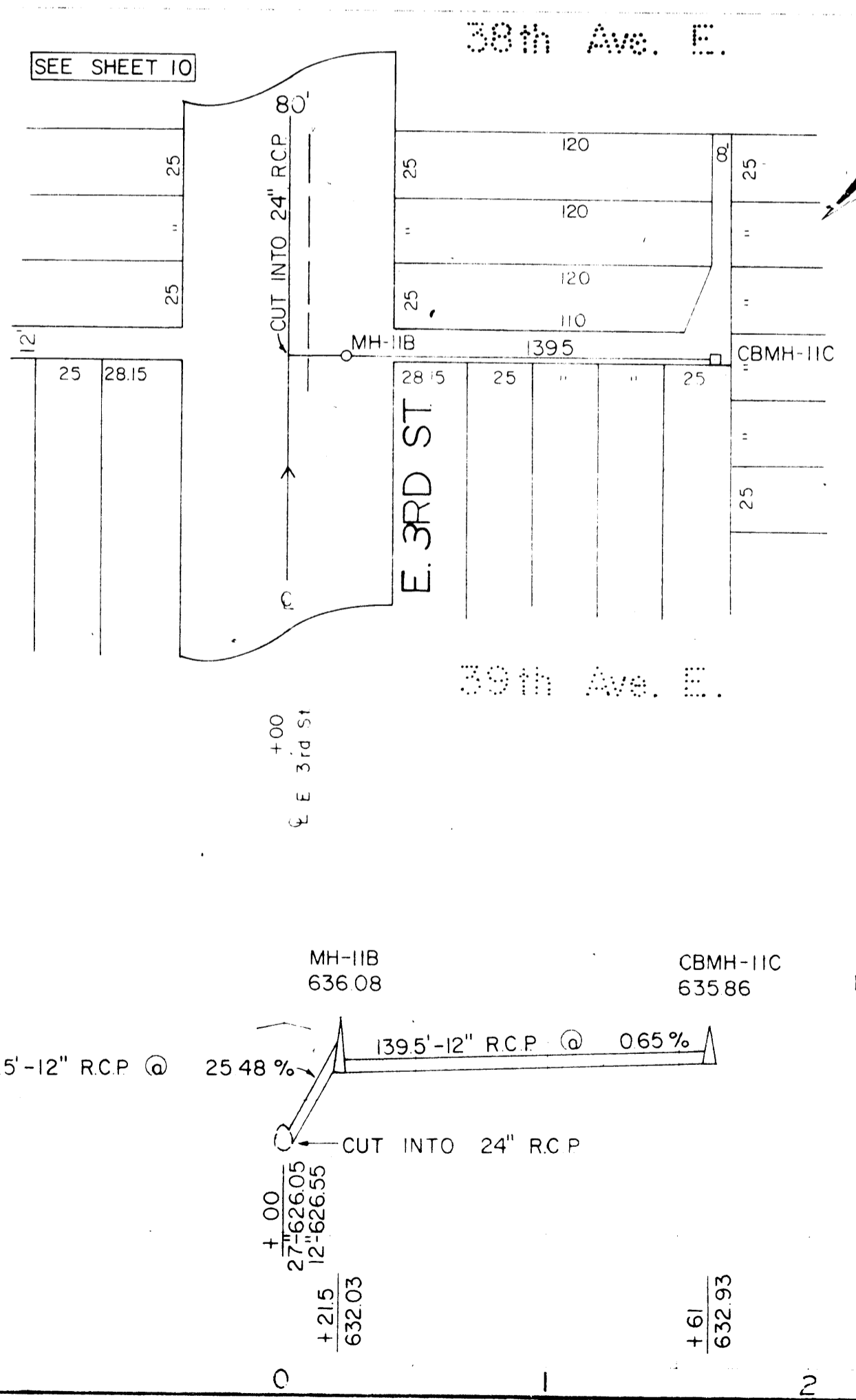
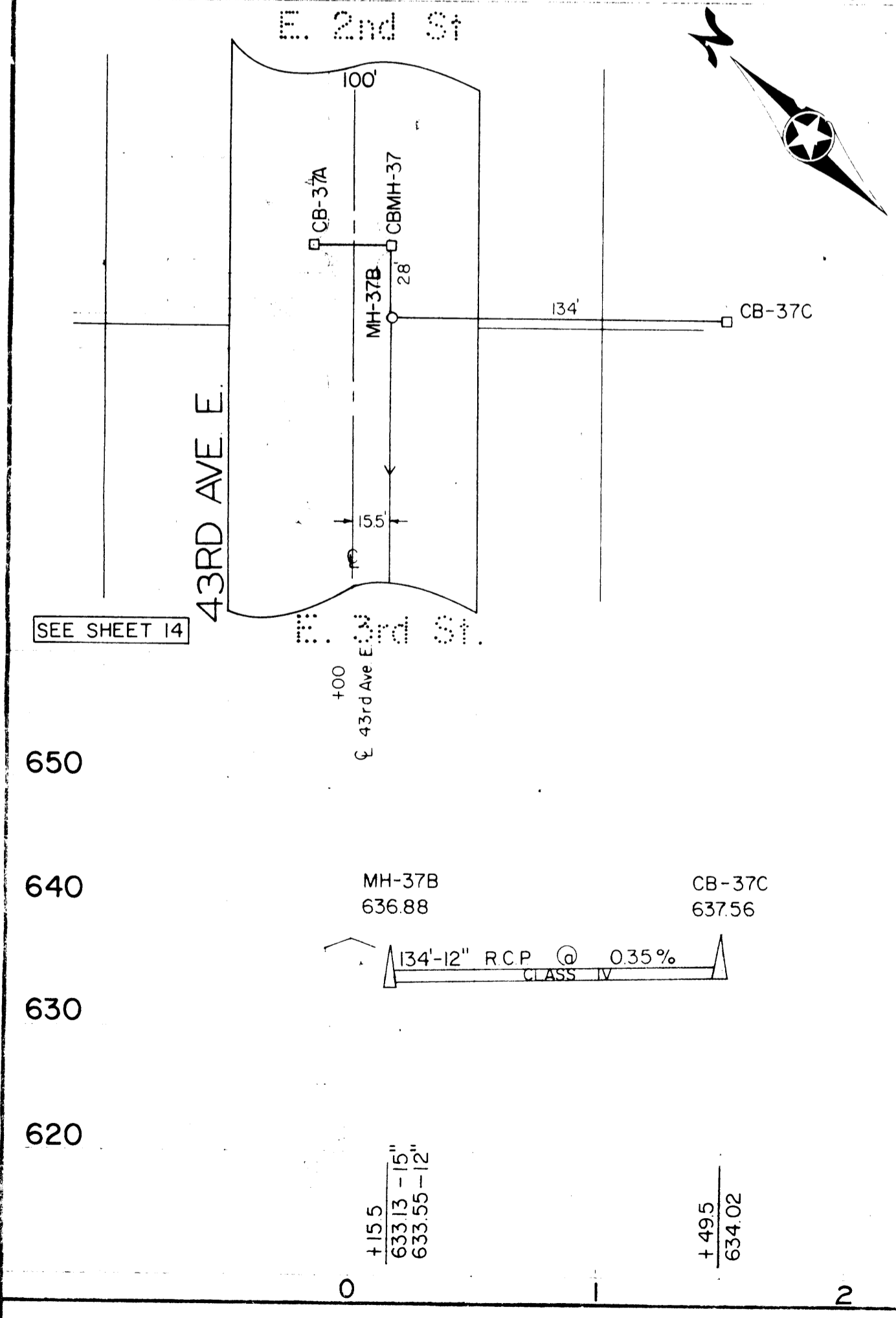
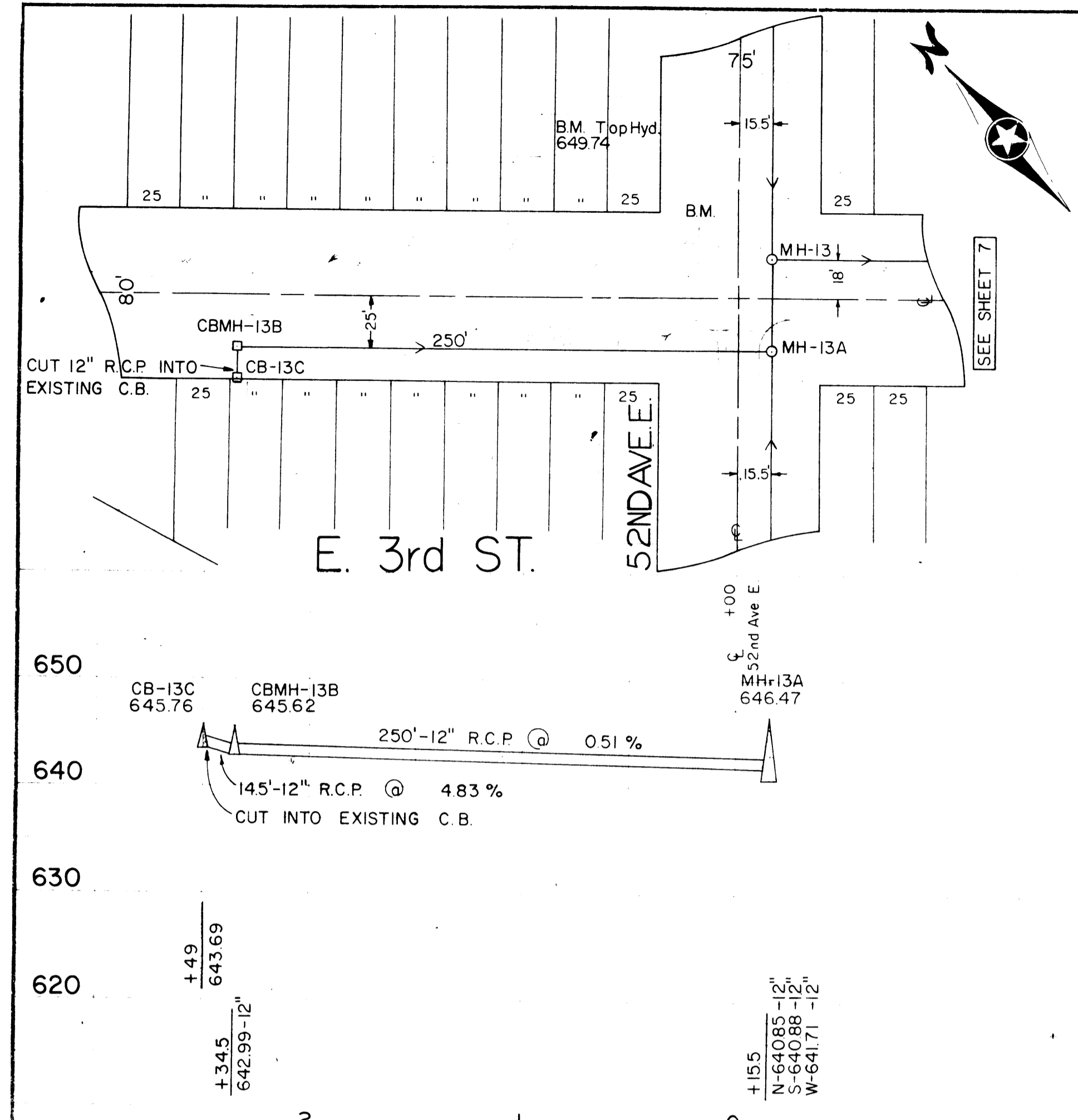
SANITARY MANHOLES - DISTRICT 7, Cont'd.

Manhole No.	Cover Type	Change	Type I Manhole Seal
S155	1642B	Build 8,94	--
S154	--	--	--
S155	--	--	--
S156	--	--	--

Neenah Casting Numbers listed are for reference only.  
Neenah, New Elm or equal castings are acceptable.

COVER TYPE DIMENSIONS

Type	Measurement	
	Diameter	Thick
I	25 3/4	x 2
II	25 1/2	x 2
III	25 1/2	x 1 1/2
IV	24 1/4	x 1 1/2
V	23 1/4	x 1 1/2
VI	24	x 1
VII	24	x 1
VIII	25 3/8	x 1
IX	25 3/4	x 1
X	24 3/8	x 1
XI	23 3/4	x 2
XII	25 1/4	x 1 1/2
XIII	25 3/4	x 1 1/2
XIV	24 1/4	x 1
XV	25 1/4	x 1
XVI	25 1/2	x 1
XVII	25 1/2	x 1
XVIII	26	x 1 1/2
XIX	24 5/8	x 1
XX	25 7/8	x 2
XXI	25 1/8	x 1
XXII	26 1/8	x 1 1/2
XXIII	26 1/4	x 1 1/2
XXIV	24 1/2	x 1
XXV	23 7/8	x 1 1/2
XXVI	25 5/8	x 2
XXVII	22 3/4	x 2
XXVIII	23 1/8	x 2
XXIX	24	x 1 1/2
XXX	22 7/8	x 1 1/2
XXXI	23	x 1 1/2
XXXII	26	x 1 1/2



SHEET NO. 20  
 DISTRICT 7-ALLOUEZ  
 SUPERIOR, W  
 BONESTROO, ROSENE, ANDERLIK & ASSOC., INC.  
 ST. PAUL, MINNESOTA  
 MARCH 8, 1974  
 RECORD PLAN  
 11/23/76  
 HBR  
 GRC