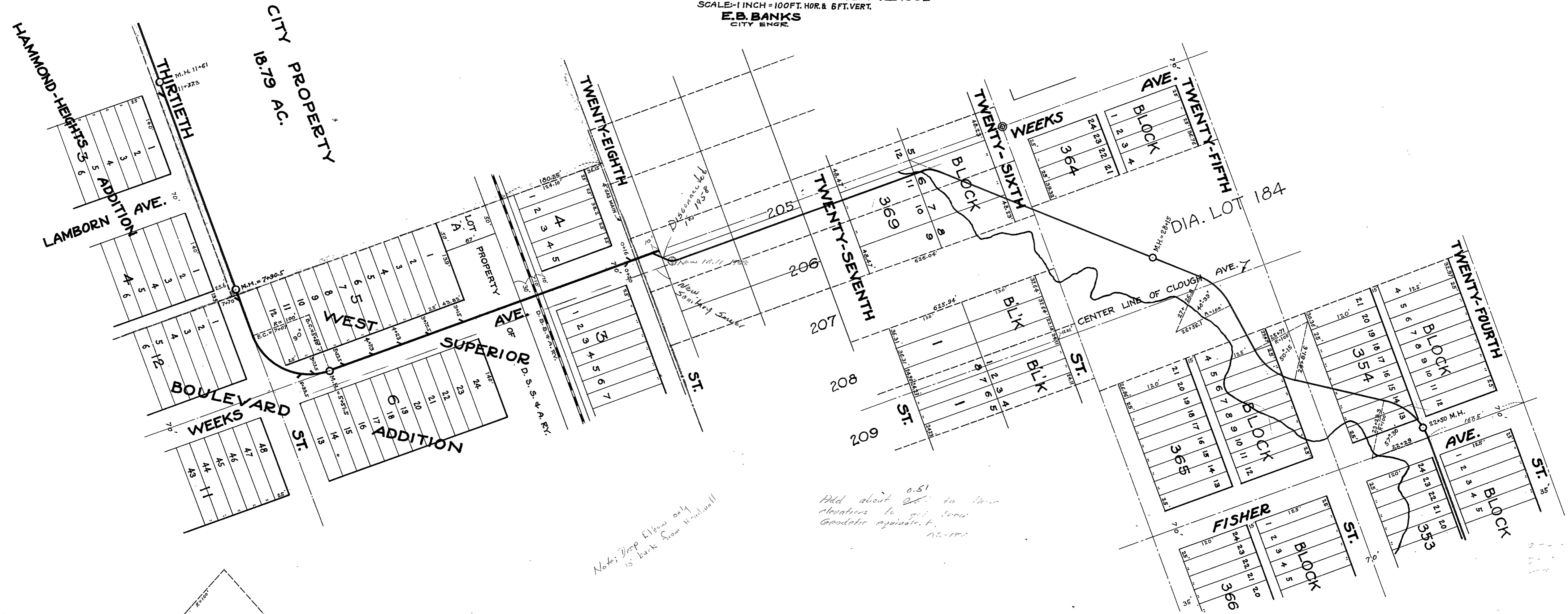


MAP & PROFILE
SHOWING MAIN SEWER IN SEWER DISTRICT NO. 9
EXTENDING SOUTHWESTERLY TO ALLEY WEST OF OAKS AVE. ON 33RD ST.
IN THE CITY OF SUPERIOR-WIS.

CONSTRUCTED BY THE CITY OF SUPERIOR WITH UNEMPLOYMENT RELIEF
FROM JANUARY 4TH 1932 TO SEPT 1ST 1932
SCALE: 1 INCH = 100 FT. HOR. & 6 FT. VERT.
E. B. BANKS
CITY ENGR.



*Notes: Deep Elbow only
15' back from Handwall*

*Add about 0.51
elevations to get true
geologic equivalent.*

