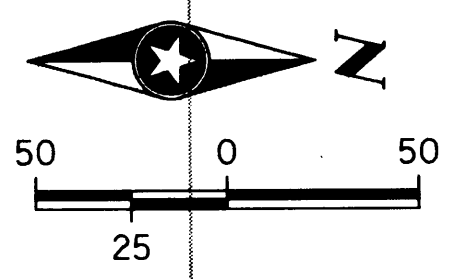
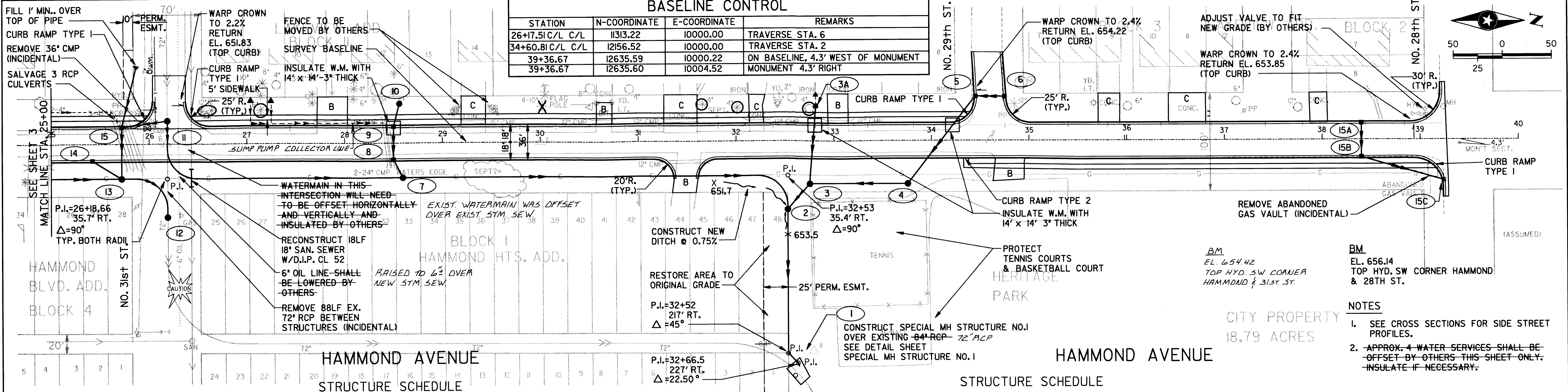


BASE OVERLAY DRG. NO.

BASELINE CONTROL

STATION	N-COORDINATE	E-COORDINATE	REMARKS
26+17.51 C/L	11313.22	10000.00	TRAVERSE STA. 6
34+60.81 C/L	12156.52	10000.00	TRAVERSE STA. 2
39+36.67	12635.59	10000.22	ON BASELINE, 4.3' WEST OF MONUMENT
39+36.67	12635.60	10004.52	MONUMENT 4.3' RIGHT

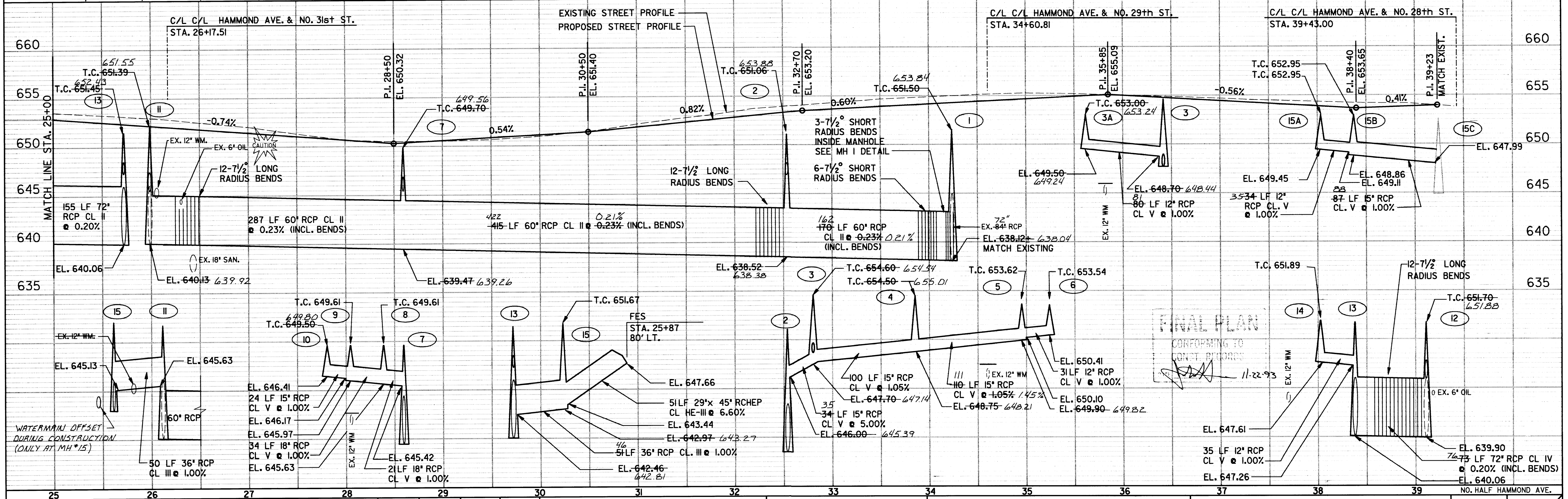


STRUCTURE SCHEDULE

STRUCTURE NO.	1	2	3	3A	4	5	6	7	8	9	10
STATION	SEE	32+53	32+76	32+80	33+76	34+45.3	34+76.3	28+59	28+50	28+50	28+56
OFFSET	DETAIL	69' RT	44' RT	36' LT	44' RT	45' LT	45' LT	35' RT	17.5' RT	17.5' LT	40' LT
STRUCTURE TYPE	SPECIAL #1	6 (T-60")	B (48")	B (48")	B (48")	INLET 3	INLET 3	F-196(T-60)	INLET 3	INLET 3	INLET SP
COVER TYPE	J	SP	J	INLET SP	J	H-LT	H-RT	J	HS	HS	SP
CONST. HEIGHT	13.38'	12.54'	6.90'	3.50'	5.75'	3.72'	3.13'	10.23'	3.98'	3.64'	3.09'

STRUCTURE SCHEDULE

II	I2	I3	I4	I5	I5A	I5B	I5C
26+19	26+19	25+72	25+42	25+42	38+40	38+40	39+24
23.6' LT	75' RT	35' RT	17.5' RT	17.5' LT	17.5' LT	17.5' RT	40' RT
H (120")	H (120")	H (120")	H (120")	H (120")	INLET 3	INLET 3	EXIST
J	J	J (T-60")	H LT	H-RT	HS	HS	EXIST
11.26'	11.80'	11.39'	4.28'	8.70'	3.50'	4.09'	EXIST



FINAL PLAN  
CONFORMING TO  
CONST. RECORDS  
11-22-93

NO.	BY	DATE	REVISIONS	ITEM	DESIGN	CHECKED

**ESEH**

SUPERIOR, WISCONSIN

**STORM SEWER  
AND STREET PLAN**

FILE NO.  
93080

DATE

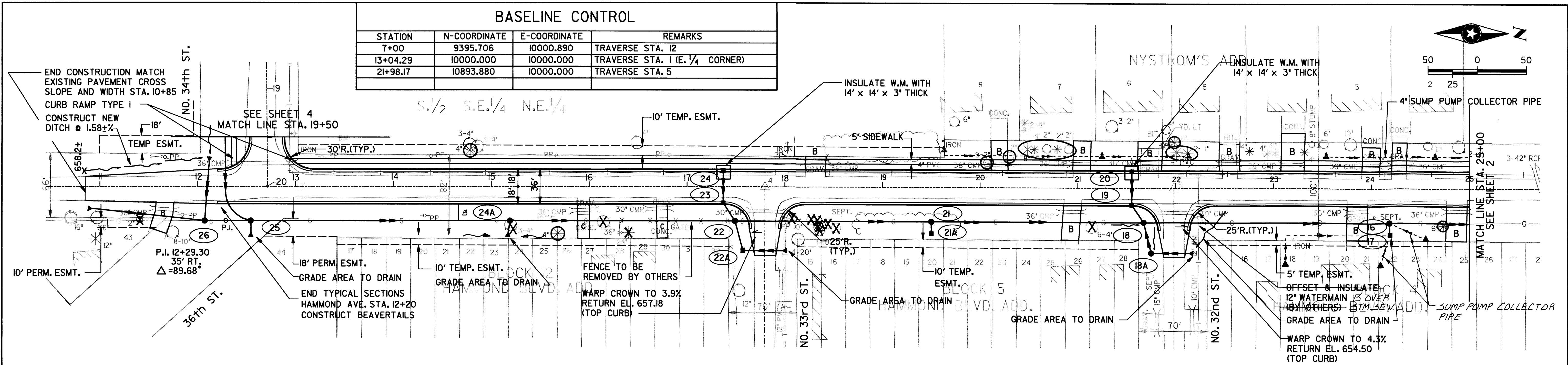
6

48

93080p3.dgn  
 Time: 08:55  
 Date: May 14, 1993

BASE OVERLAY DRG. NO.

BASELINE CONTROL			
STATION	N-COORDINATE	E-COORDINATE	REMARKS
7+00	9395.706	10000.890	TRAVERSE STA. 12
13+04.29	10000.000	10000.000	TRAVERSE STA. 1 (E. 1/4 CORNER)
21+98.17	10893.880	10000.000	TRAVERSE STA. 5

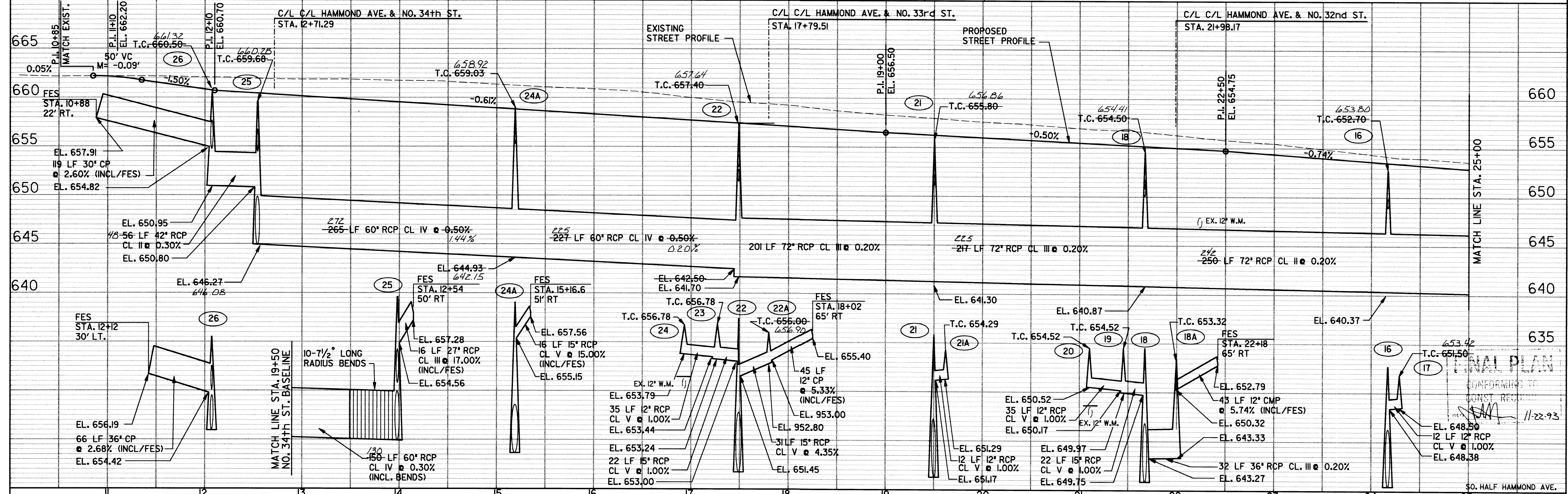


STRUCTURE SCHEDULE

STRUCTURE NO.	16	17	18	18A	19	20	21	21A	22	22A	23	24	24A	25	26
STATION	24+18	24+19	21+67	21+75	21+55	21+55	19+50	19+50	17+49	17+57	17+36	17+36	15+19	12+54	12+07
OFFSET	35' RT	47' RT	35' RT	66' RT	17.5' RT	17.5' LT	35' RT	47' RT	35' RT	65' RT	17.5' RT	17.5' LT	35' RT	35' RT	35' RT
STRUCTURE TYPE	6 (T-72")	INLET SP	H (420)	C (60")	INLET 3	INLET 3	6 (T-72")	INLET SP	H (420")	INLET SP	INLET 3	INLET 3	6 (T-60")	F (96")	D (72")
COVER TYPE	J	SP	SP 7-72"	SP	H-LT	H-RT	SP	SP	H-LT	H-LT	H-LT	H-LT	J	J	SP
CONST. HEIGHT	12.33'	3.00'	13.63'	10.00'	4.55'	4.00'	14.50'	3.00'	15.70'	3.00'	3.34'	2.99'	15.38'	14.75'	9.55'

B.M.  
EL. 662.60  
TOP HYD. NW CORNER  
HAMMOND & 34 TH ST.  
(HYD. EL. WILL CHANGE  
DURING PROJECT)

- NOTES
- HAMMOND AVE. STA. 12+71.29-  
NO. 34th STREET STA. 20+00.
  - SEE CROSS-SECTIONS FOR SIDE STREET  
PROFILES.
  - OFFSET AND INSULATE 2 WATER  
SERVICES BY OTHERS.



FINAL PLAN  
CONFORMING TO  
CONST. RECORD  
11-22-93



SUPERIOR, WISCONSIN

STORM SEWER  
AND STREET PLAN

FILE NO. 93080	7
DATE	48

NO.	BY	DATE	REVISIONS	ITEM	DESIGN	CHECKED

93080pc2.dgn  
Time: 09:57  
Date: May, 14, 1993