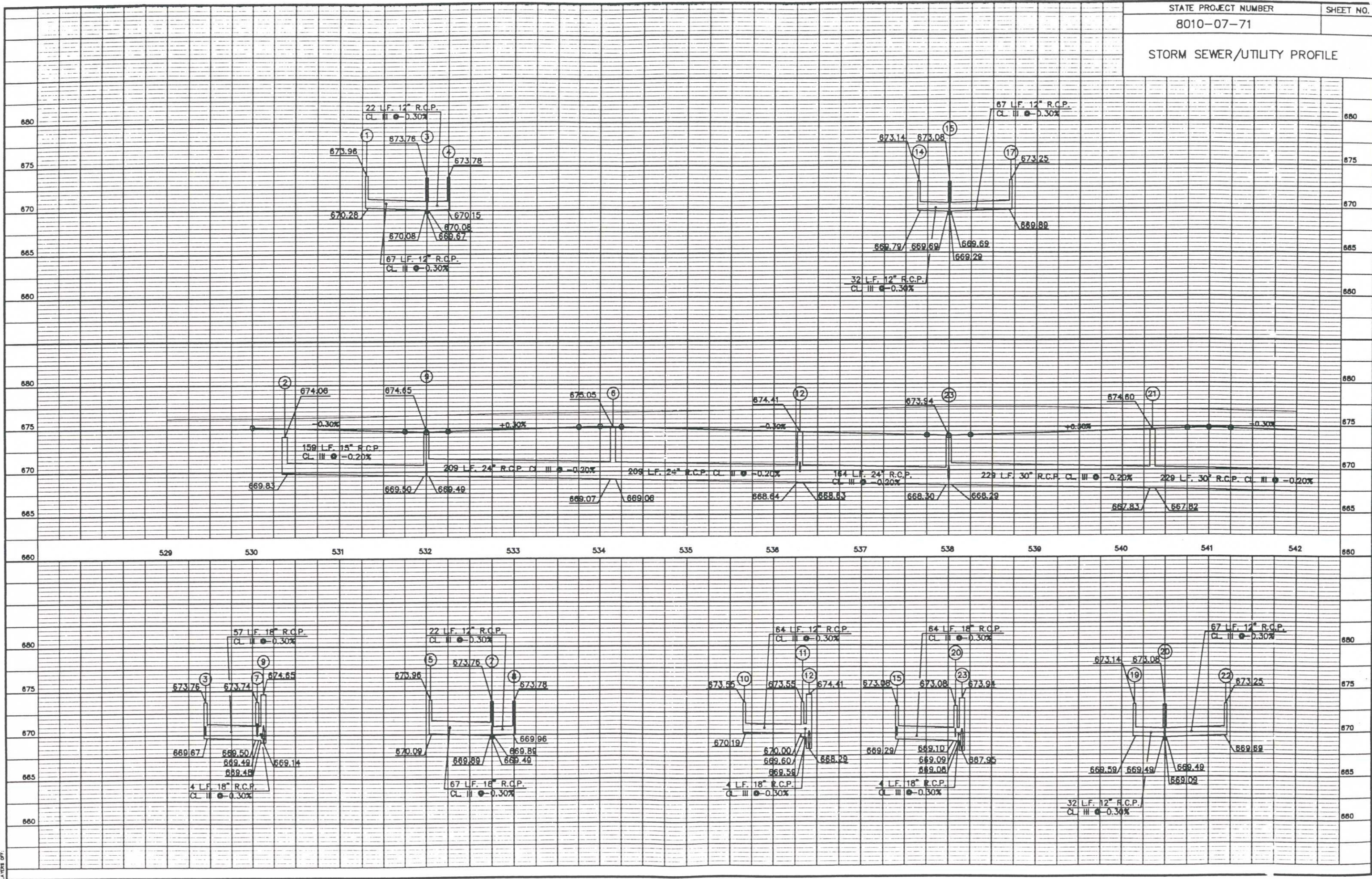
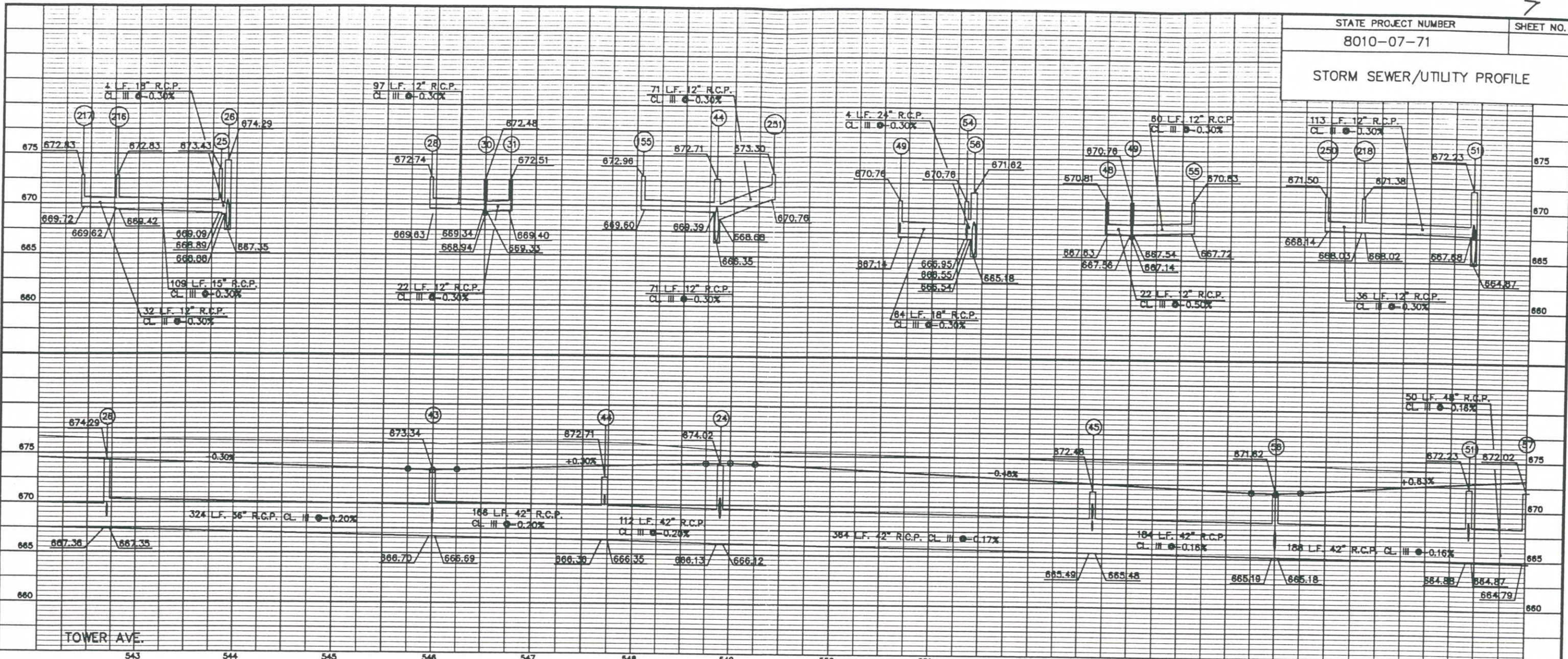


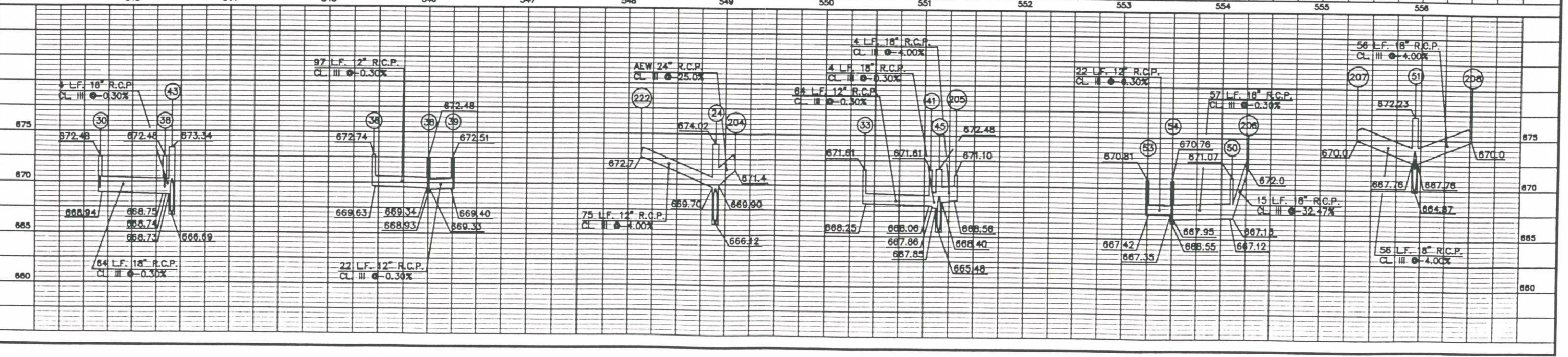
STORM SEWER/UTILITY PROFILE



STORM SEWER/UTILITY PROFILE

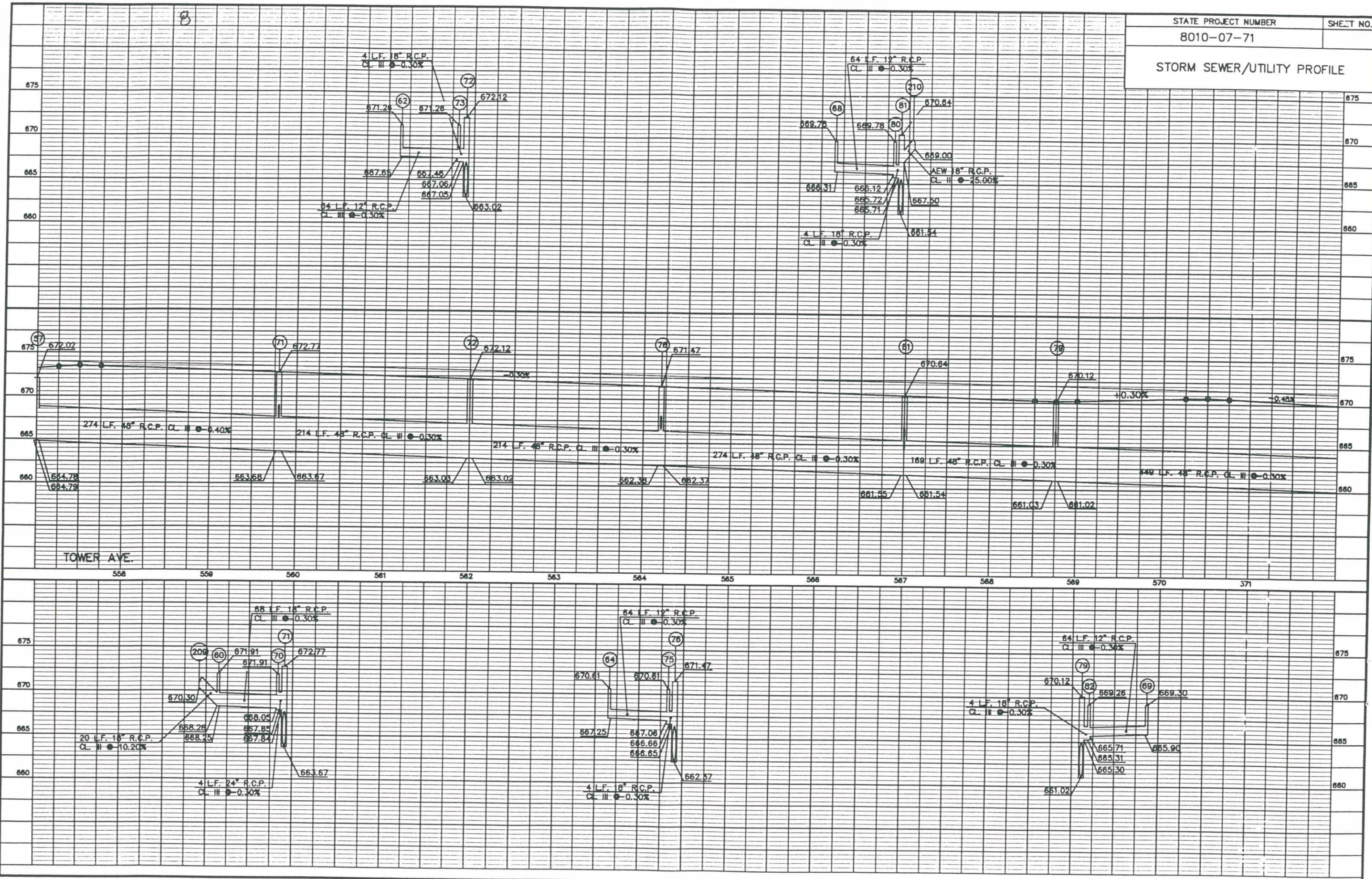


TOWER AVE.



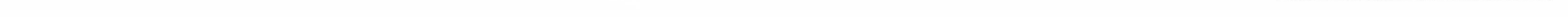
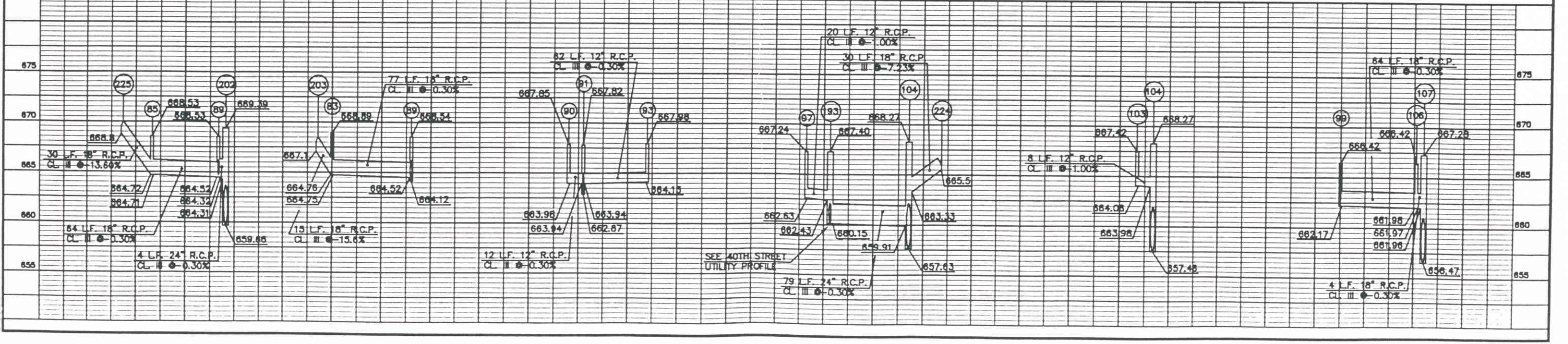
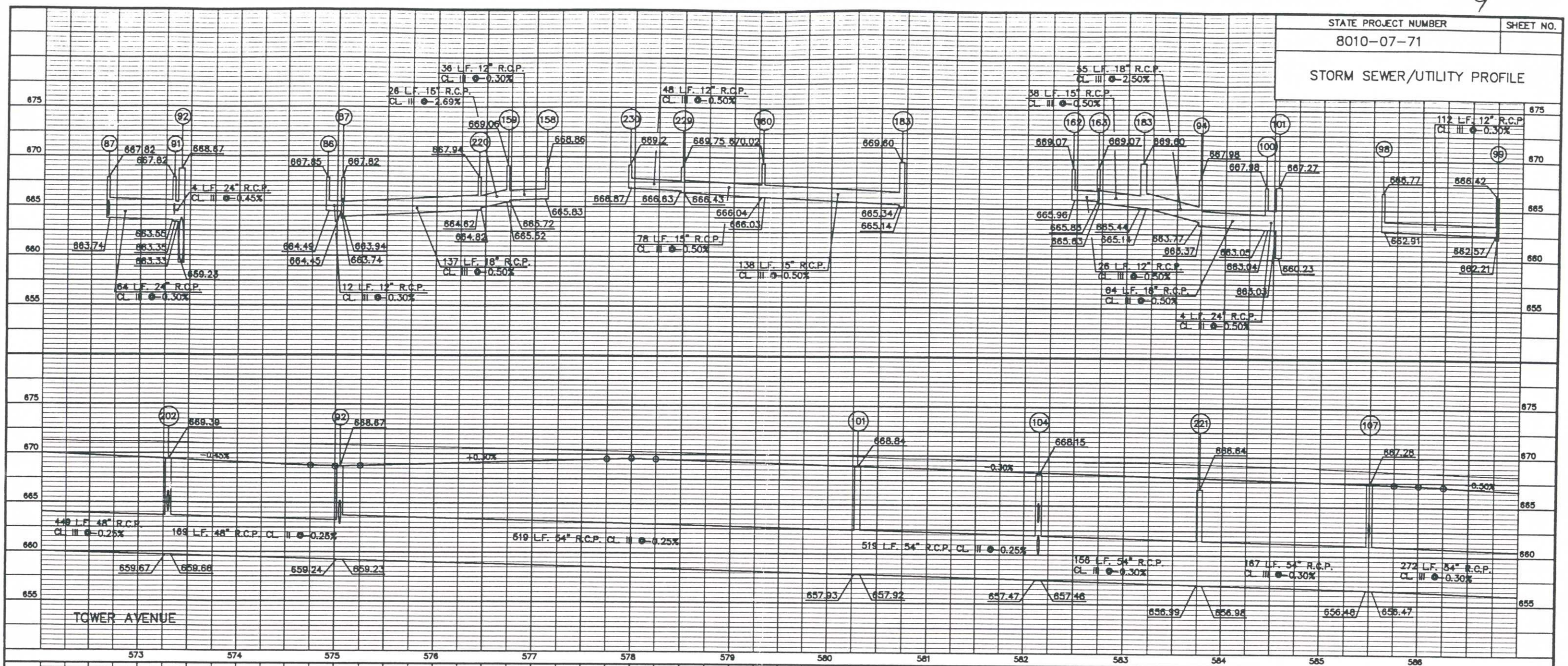
DATE: 09/28/94  
DRAWN BY: JLD  
CHECKED BY: JLD

STORM SEWER/UTILITY PROFILE



TOWER AVE.

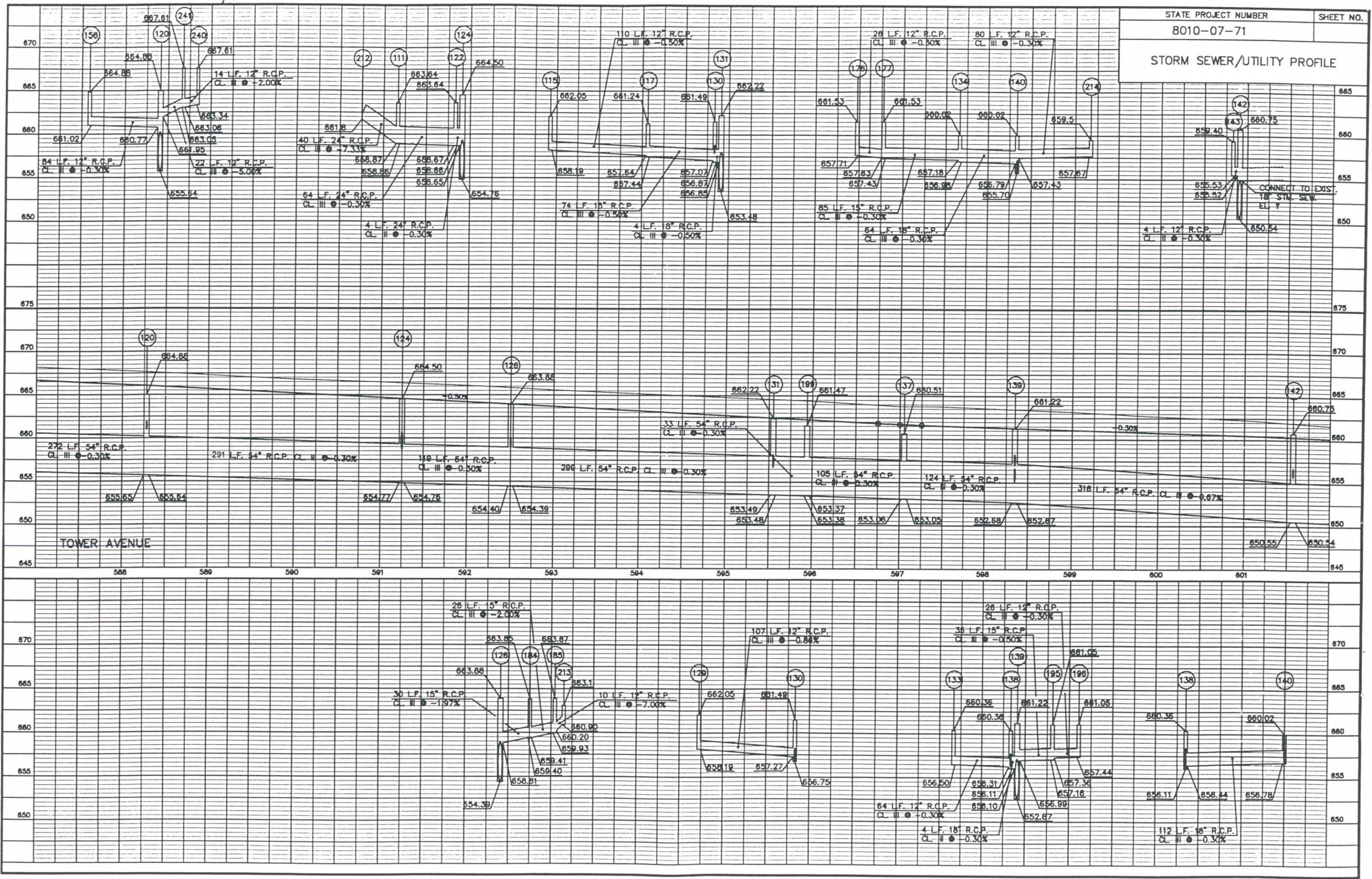
STORM SEWER/UTILITY PROFILE



DRAWING NAME: 133004p4  
LAYER: DT

SEE 40TH STREET  
UTILITY PROFILE

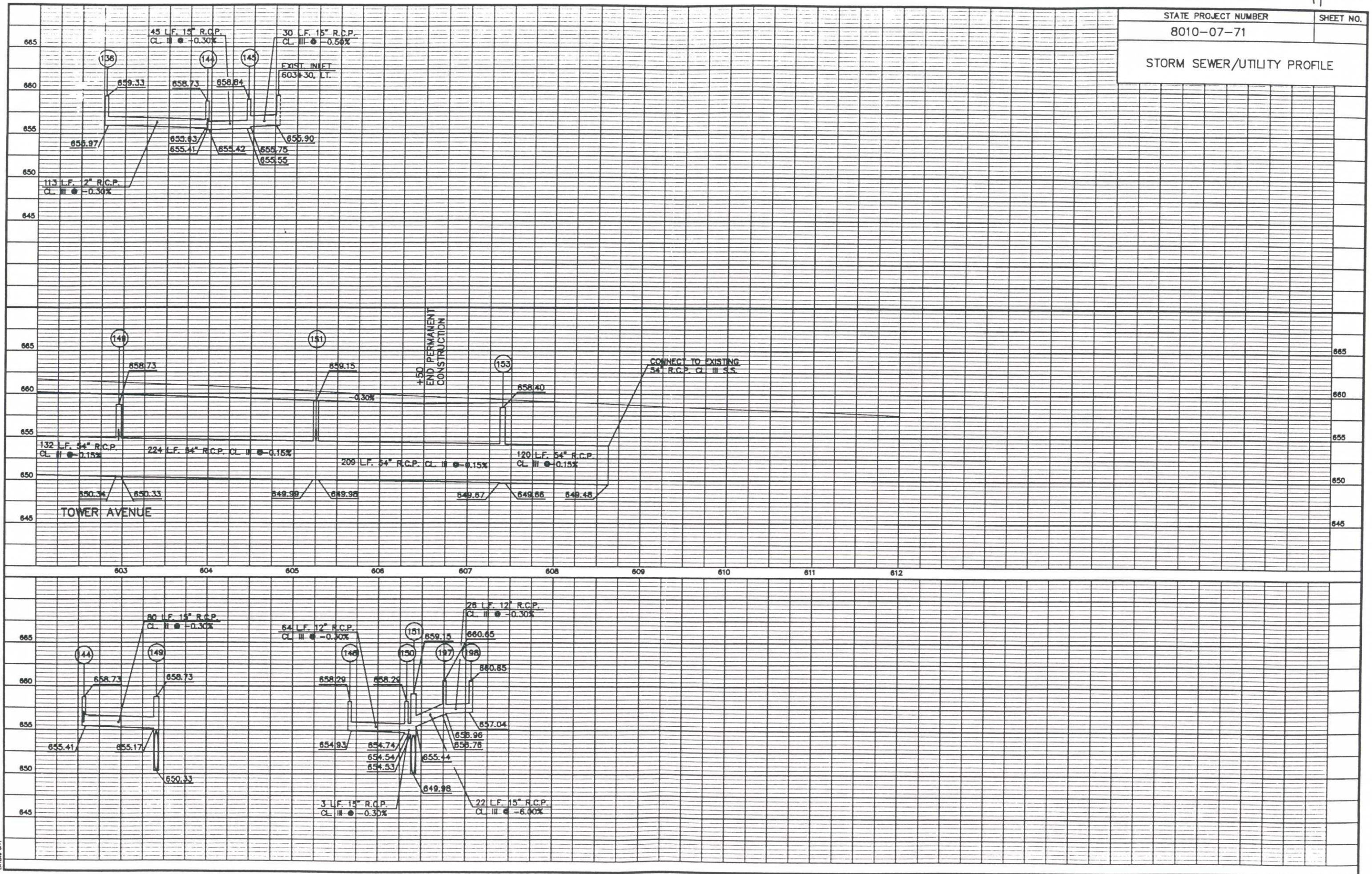
STORM SEWER/UTILITY PROFILE



TOWER AVENUE

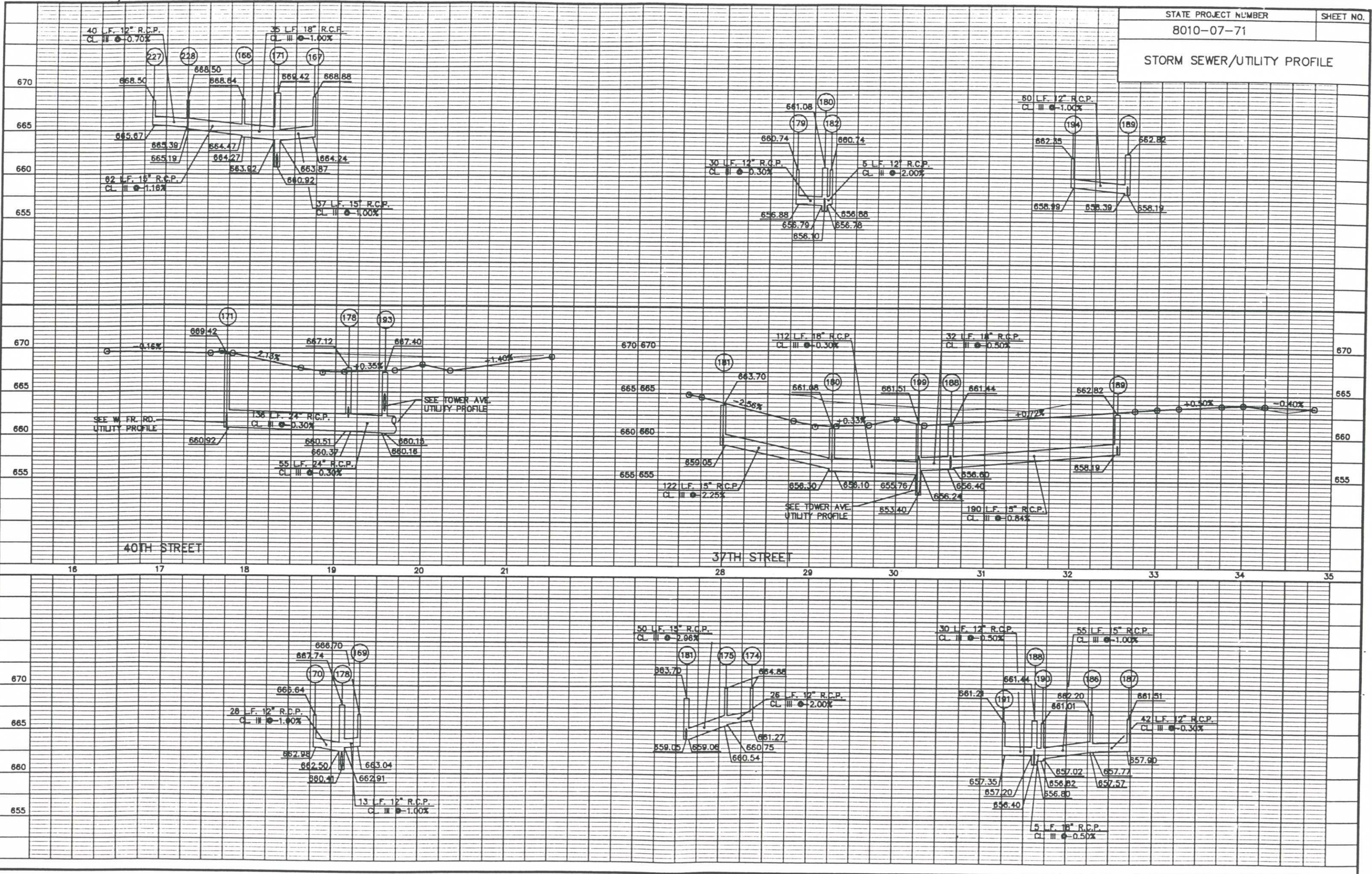
CONNECT TO EXIST. 18\"/>

STORM SEWER/UTILITY PROFILE



DRAWING NUMBER: 13300-04  
LAYOUT: 071

STORM SEWER/UTILITY PROFILE

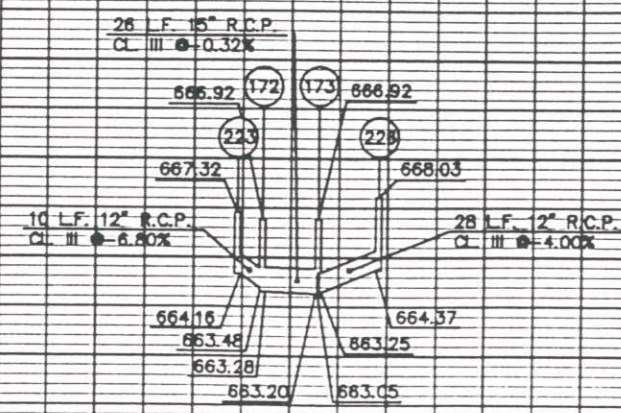
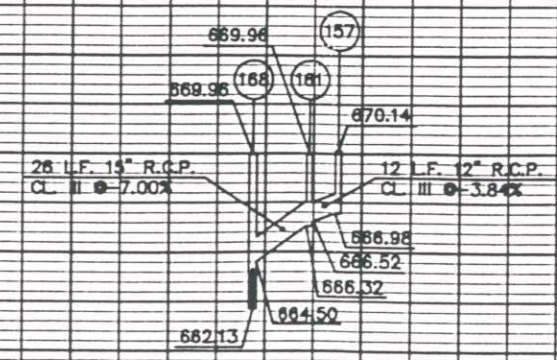
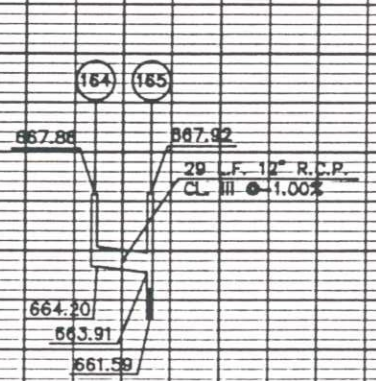
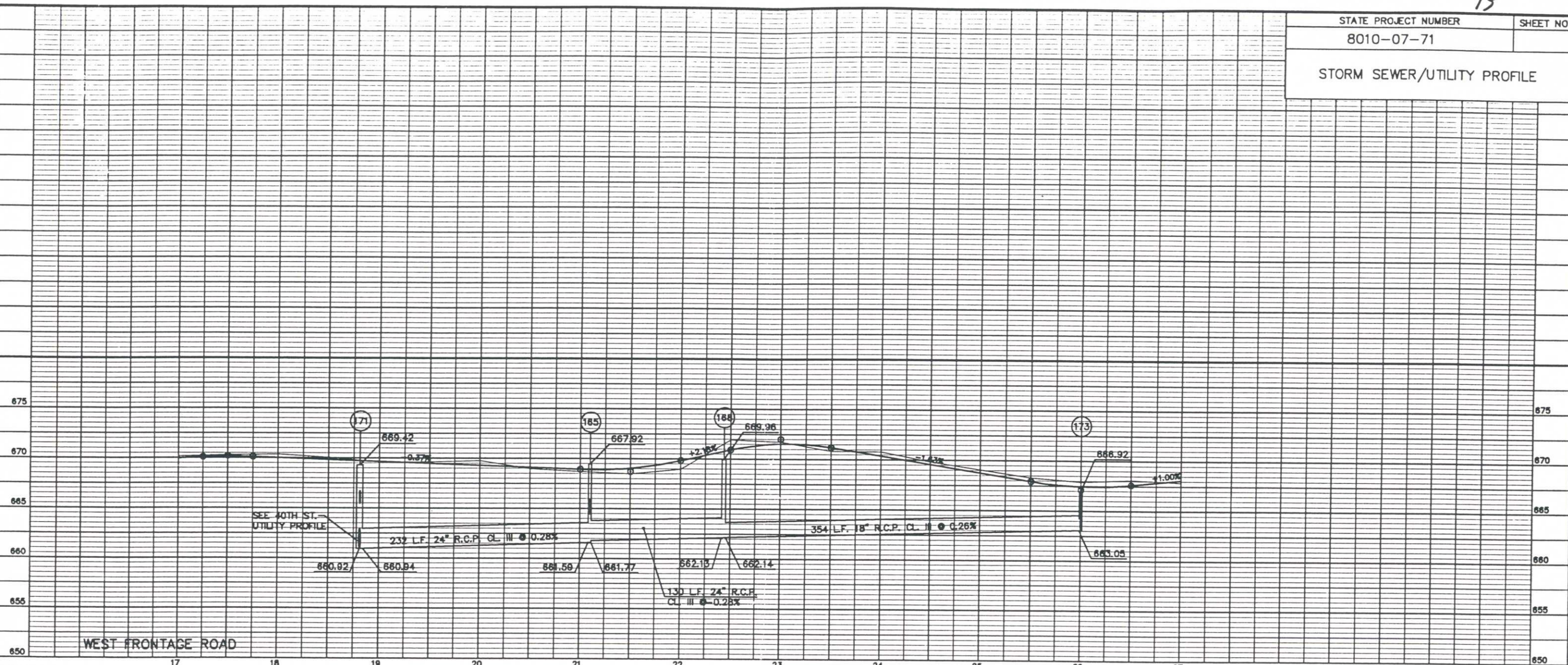


40TH STREET

37TH STREET

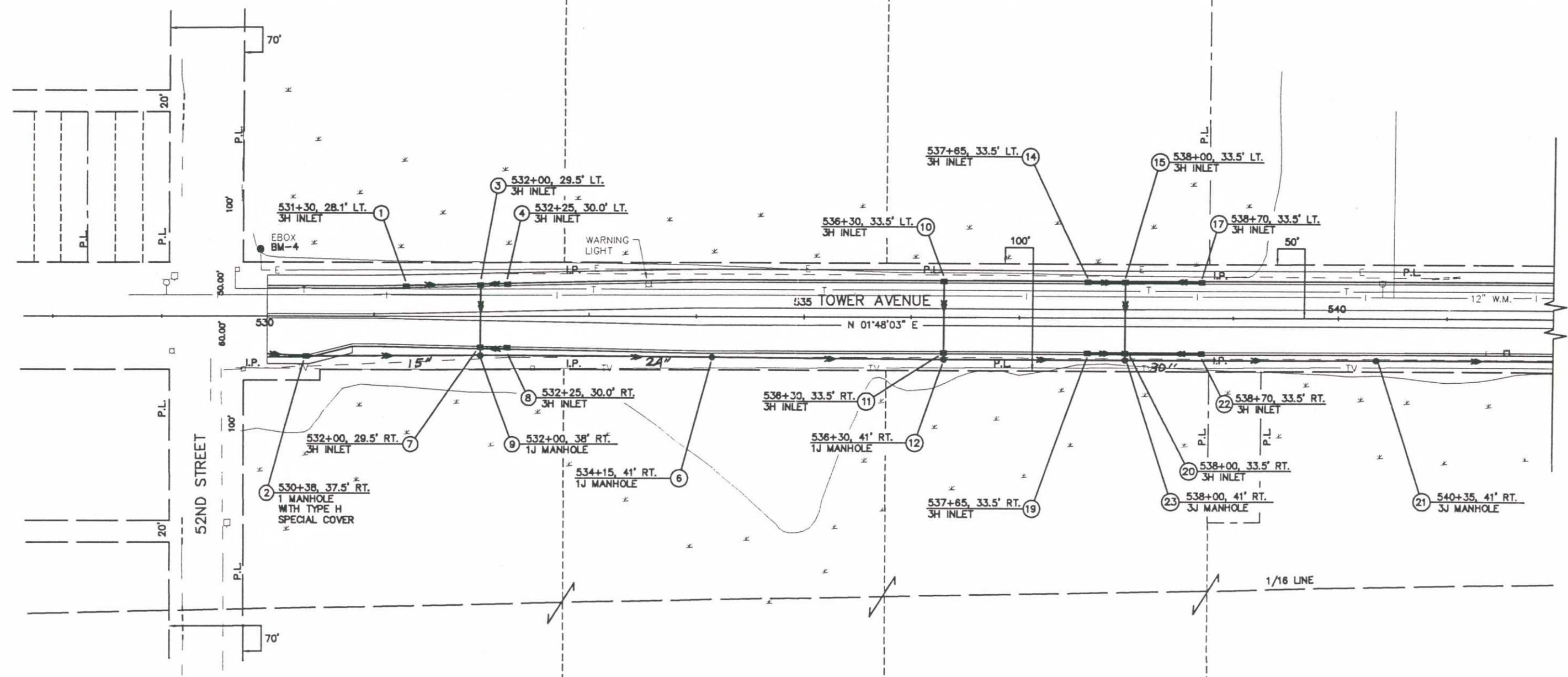
DATE: 08/11/94 LAYER: 07

STORM SEWER/UTILITY PROFILE



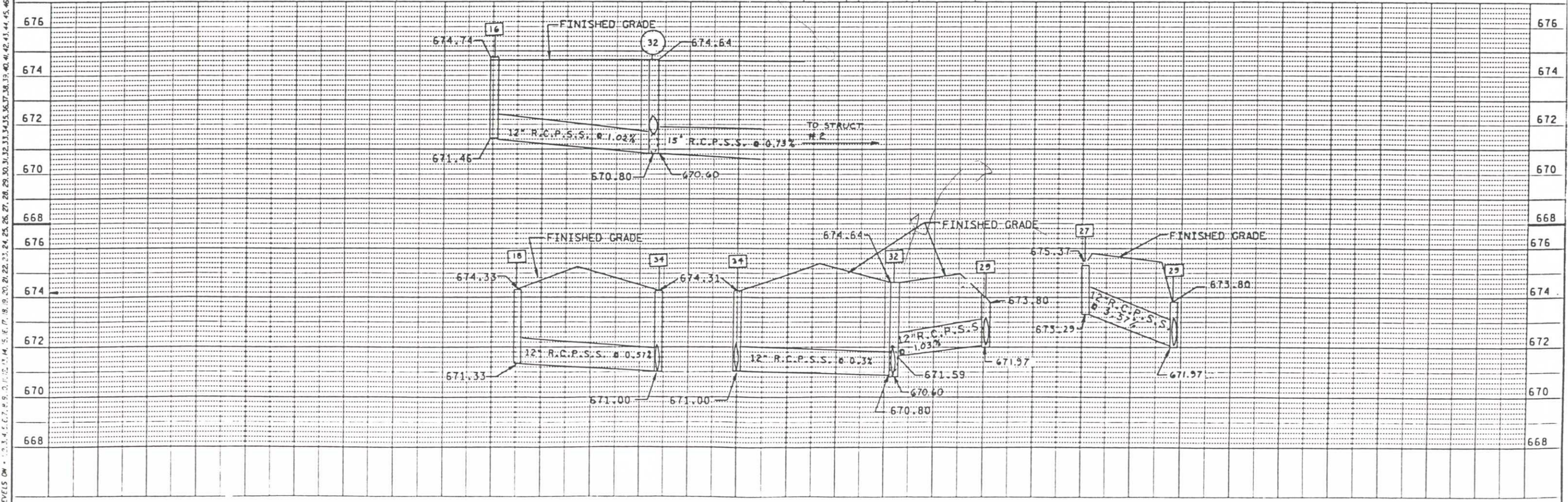
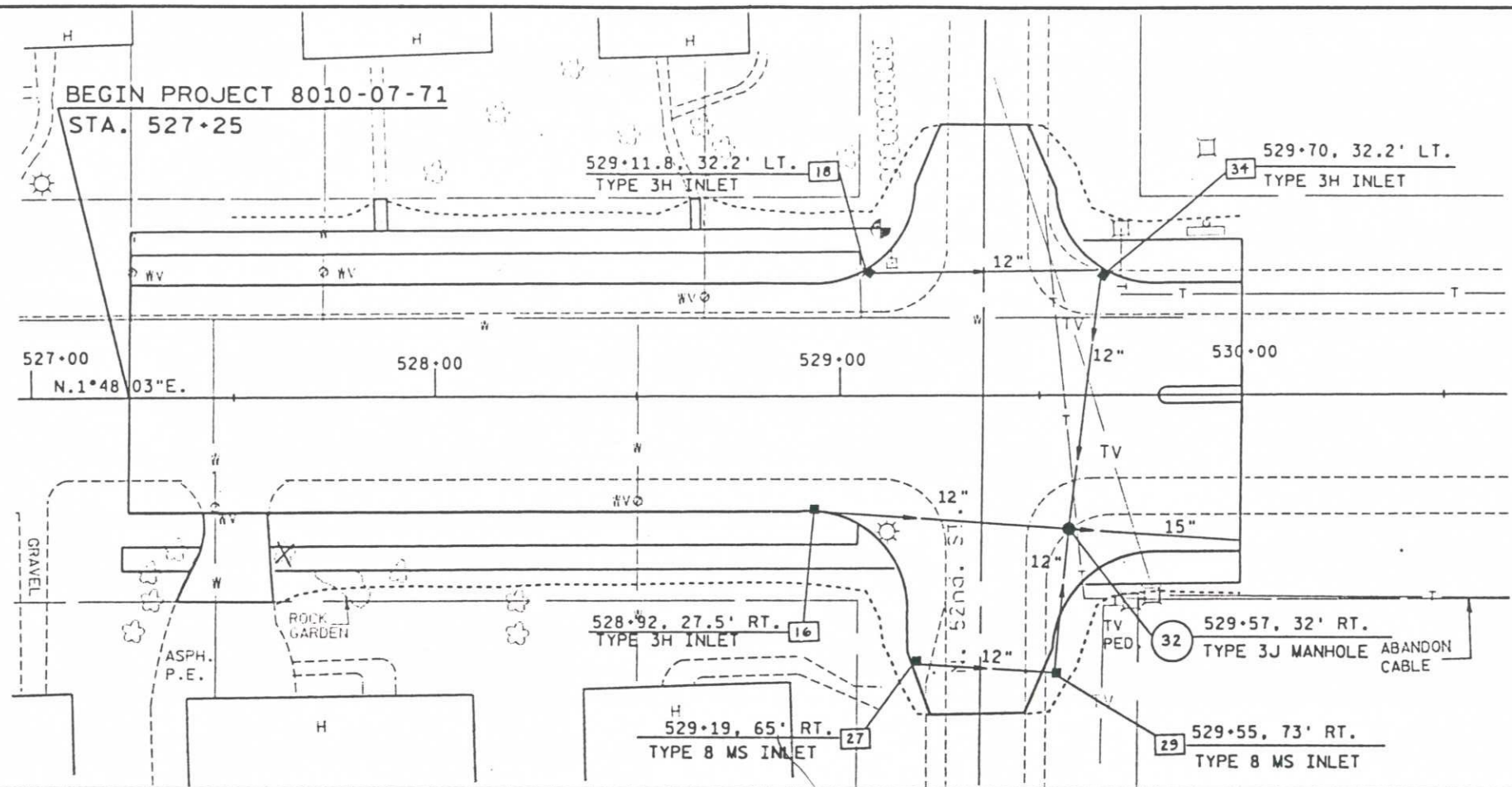


STORM SEWER/UTILITY PLAN



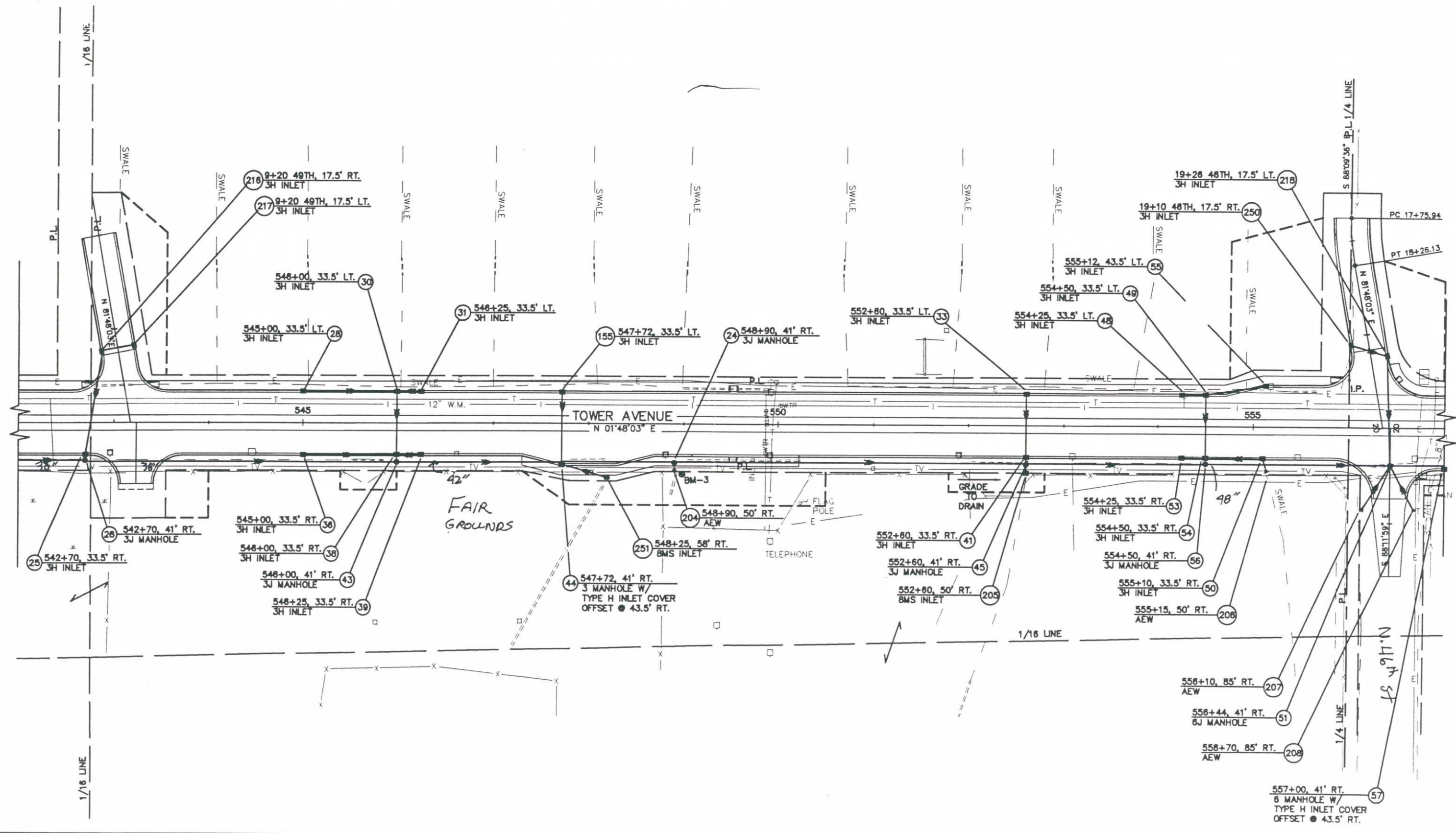
DRAWING NAME: 232000/UT  
LAYER: 07

STATE PROJECT NUMBER 8010-07-71	SHEET NO
TOWER AVENUE, CITY OF SUPERIOR STORM SEWER PLAN	
S.T.H. 35	DOUGLAS COUNTY



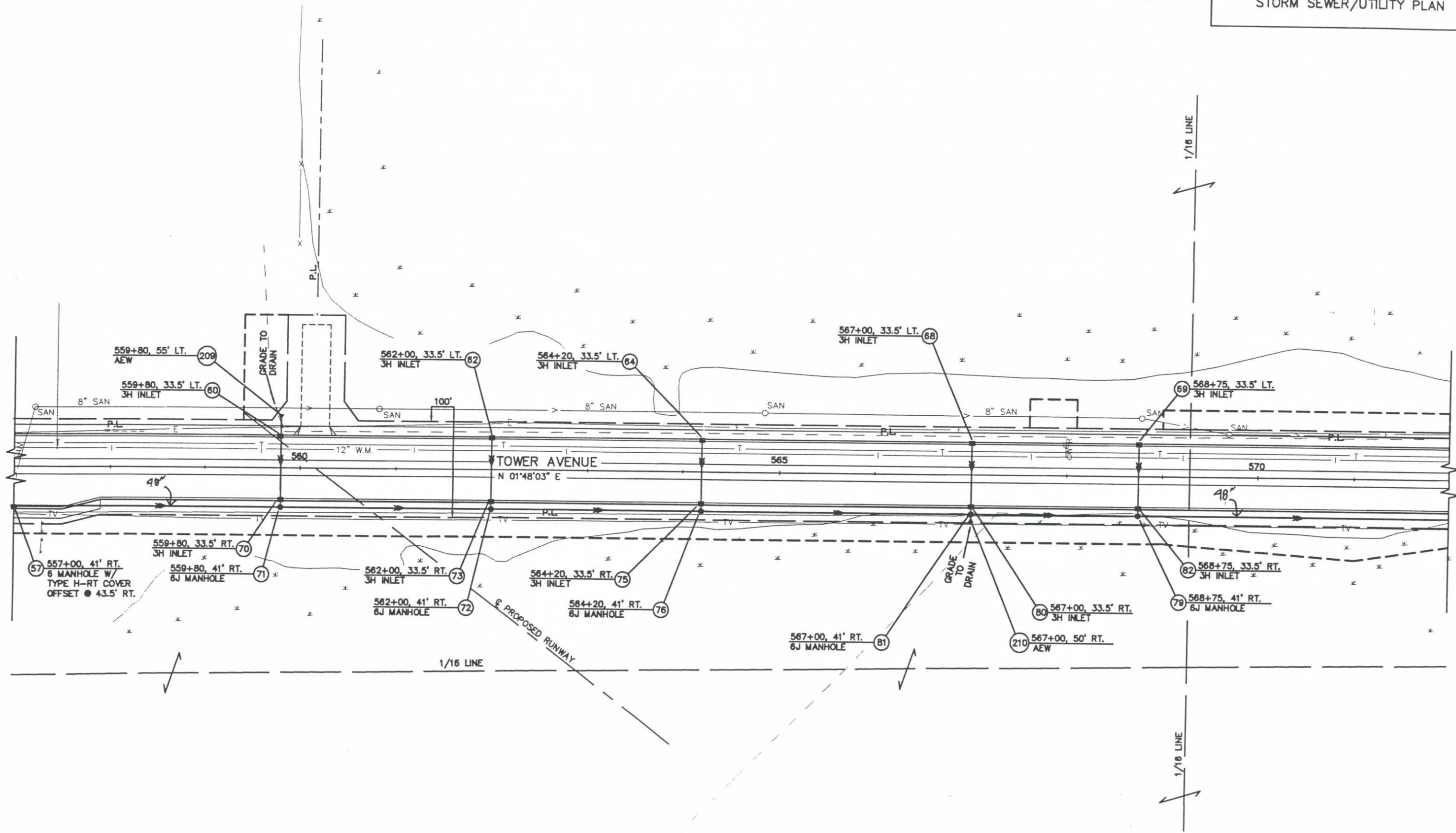
LEVELS ON - 1.0, 1.4, 1.7, 1.9, 2.0, 2.1, 2.2, 2.3, 2.4, 2.5, 2.6, 2.7, 2.8, 2.9, 3.0, 3.1, 3.2, 3.3, 3.4, 3.5, 3.6, 3.7, 3.8, 3.9, 4.0, 4.1, 4.2, 4.3, 4.4, 4.5, 4.6, 4.7, 4.8, 4.9, 5.0, 5.1, 5.2, 5.3, 5.4, 5.5, 5.6, 5.7, 5.8, 5.9, 6.0, 6.1, 6.2, 6.3

STATE PROJECT NUMBER	SHEET NO.
8010-07-71	17
STORM SEWER/UTILITY PLAN	

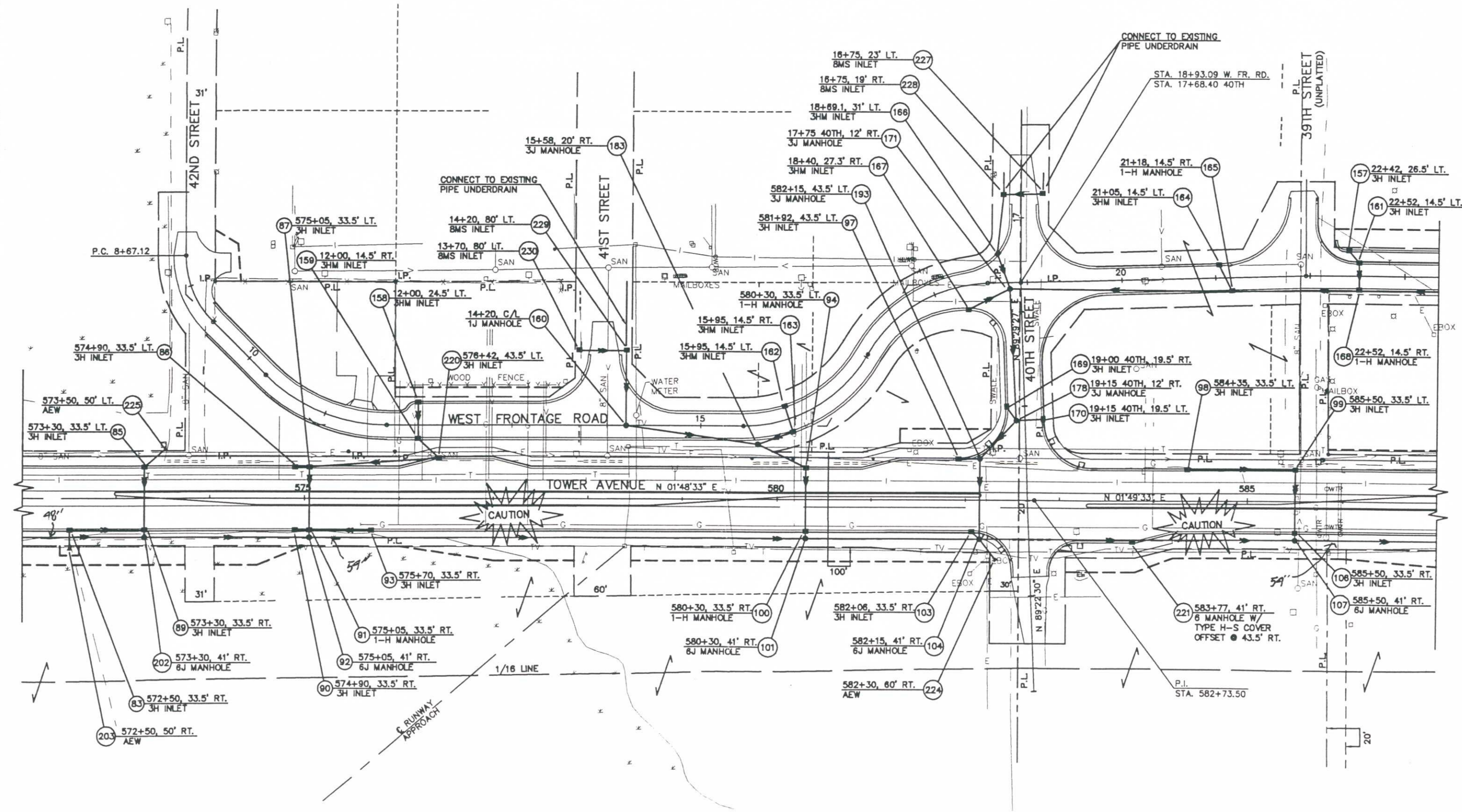


DRAWING BOARD 233000172  
L.A. VESPA DPT.

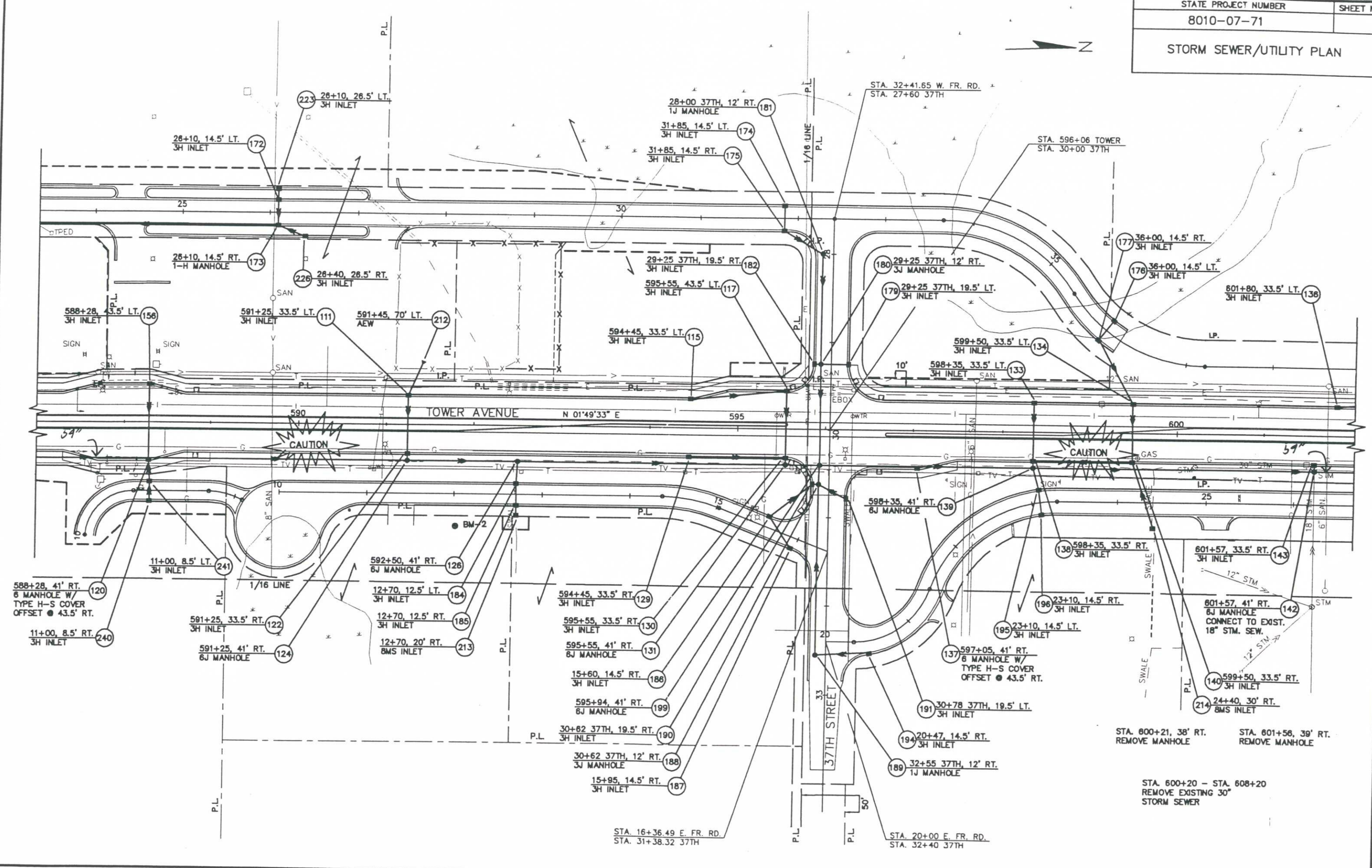
STATE PROJECT NUMBER	SHEET NO.
8010-07-71	
STORM SEWER/UTILITY PLAN	



STATE PROJECT NUMBER	SHEET NO.
8010-07-71	
STORM SEWER/UTILITY PLAN	



DRAWING NAME: 23300074  
 LAYERS: 071  
 BOX AND #



DRAWING NAME: 2370007B  
 LAYERS: 071

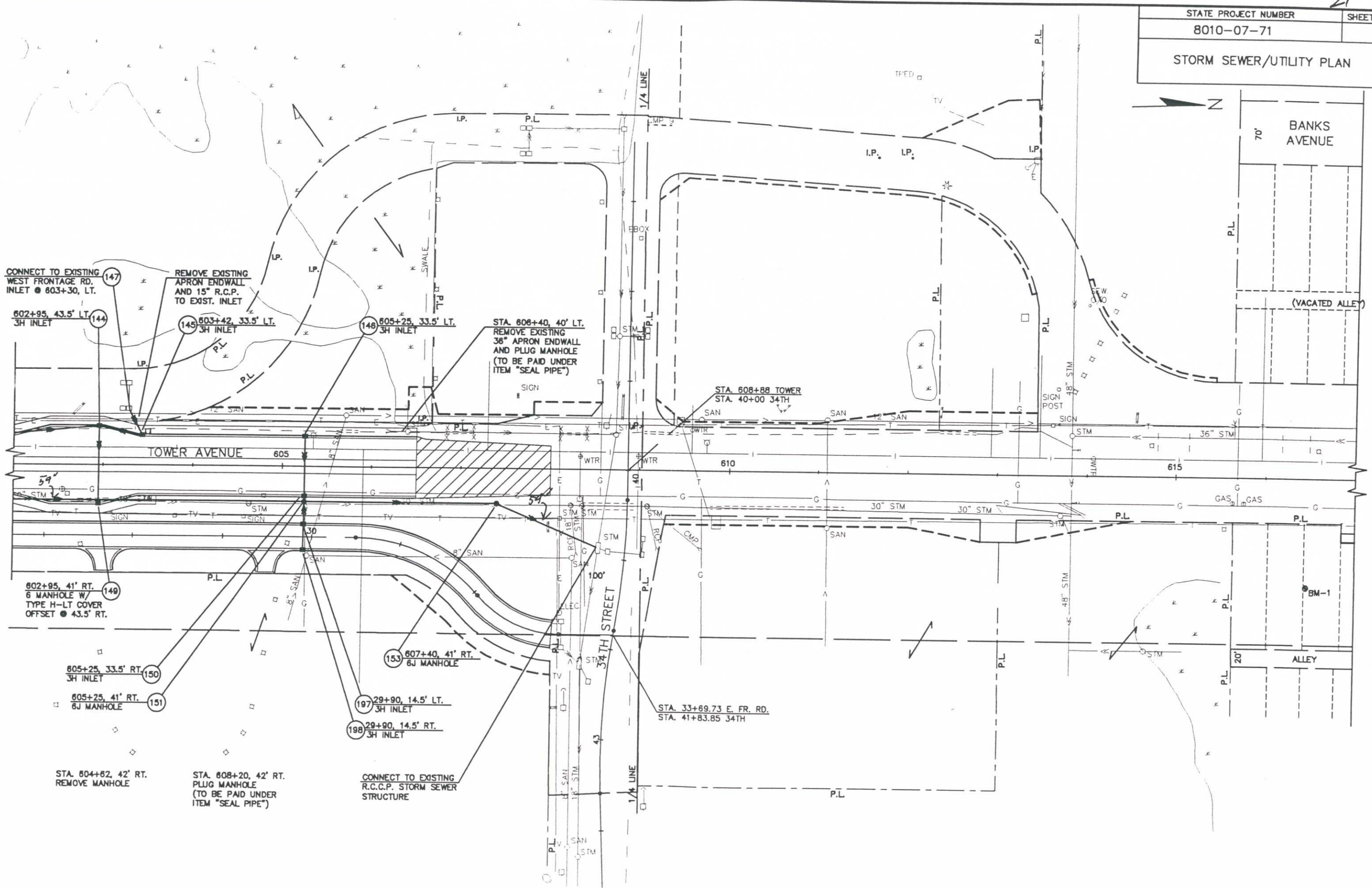
STA. 16+36.49 E. FR. RD.  
 STA. 31+38.32 37TH

STA. 20+00 E. FR. RD.  
 STA. 32+40 37TH

STA. 600+21, 38' RT. REMOVE MANHOLE  
 STA. 601+56, 39' RT. REMOVE MANHOLE

STA. 600+20 - STA. 608+20  
 REMOVE EXISTING 30"  
 STORM SEWER

STORM SEWER/UTILITY PLAN



CONNECT TO EXISTING WEST FRONTAGE RD. INLET @ 603+30, LT.

REMOVE EXISTING APRON ENDWALL AND 15\" R.C.P. TO EXIST. INLET

STA. 608+40, 40' LT. REMOVE EXISTING 36\" APRON ENDWALL AND PLUG MANHOLE (TO BE PAID UNDER ITEM \"SEAL PIPE\")

STA. 608+88 TOWER STA. 40+00 34TH

602+95, 41' RT. 6 MANHOLE W/ TYPE H-LT COVER OFFSET @ 43.5' RT.

607+40, 41' RT. 6J MANHOLE

STA. 33+69.73 E. FR. RD. STA. 41+83.85 34TH

STA. 604+62, 42' RT. REMOVE MANHOLE

STA. 608+20, 42' RT. PLUG MANHOLE (TO BE PAID UNDER ITEM \"SEAL PIPE\")

CONNECT TO EXISTING R.C.C.P. STORM SEWER STRUCTURE

DATE: 09/28/94 DRAWING NO.: 233000/78 LAYOUT: 0/1