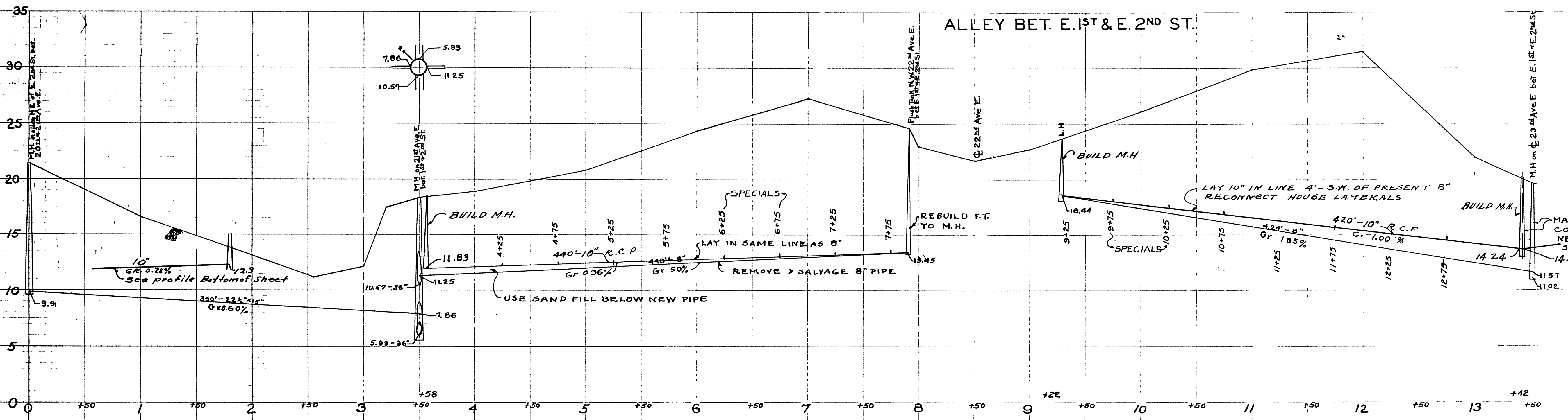
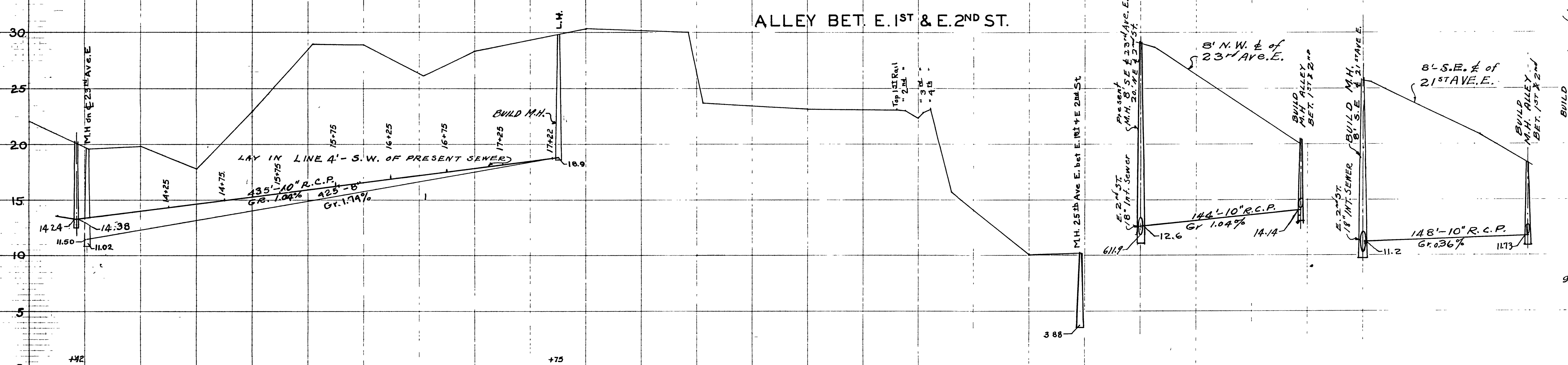


CITY OF SUPERIOR  
 SEWAGE INTERCEPTING SYSTEM  
 AUGUST, 1938  
 PROFILES, SECTION "D"  
 SHEET NO. 5 OF 5  
 CITY OF SUPERIOR  
 ENGINEERING DEPARTMENT  
 T.M. BASTERASH-CITY ENG.  
 REVISED FEB, 1940

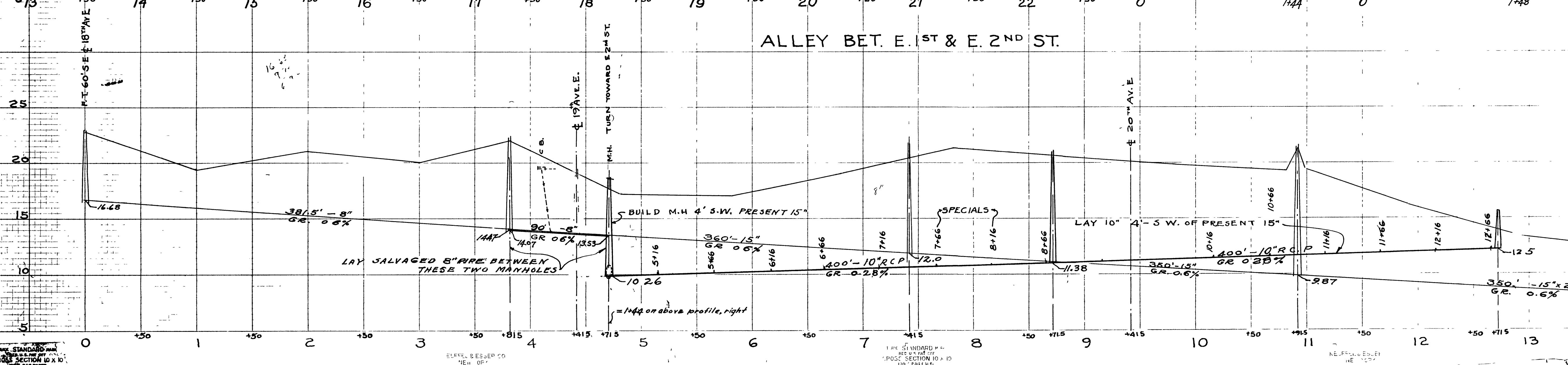
ALLEY BET. E. 1ST & E. 2ND ST.



ALLEY BET. E. 1ST & E. 2ND ST.



ALLEY BET. E. 1ST & E. 2ND ST.



Section D-5