

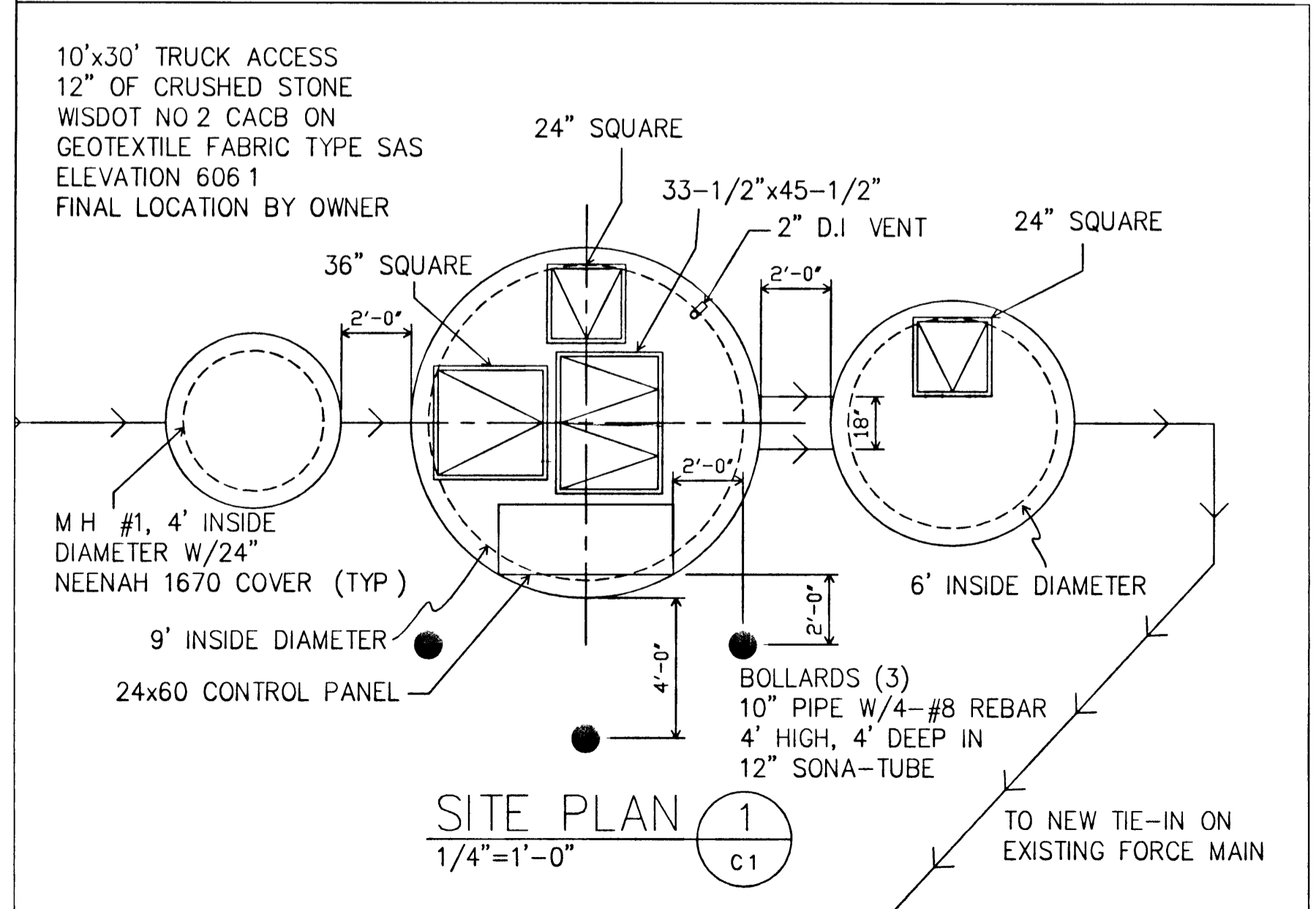
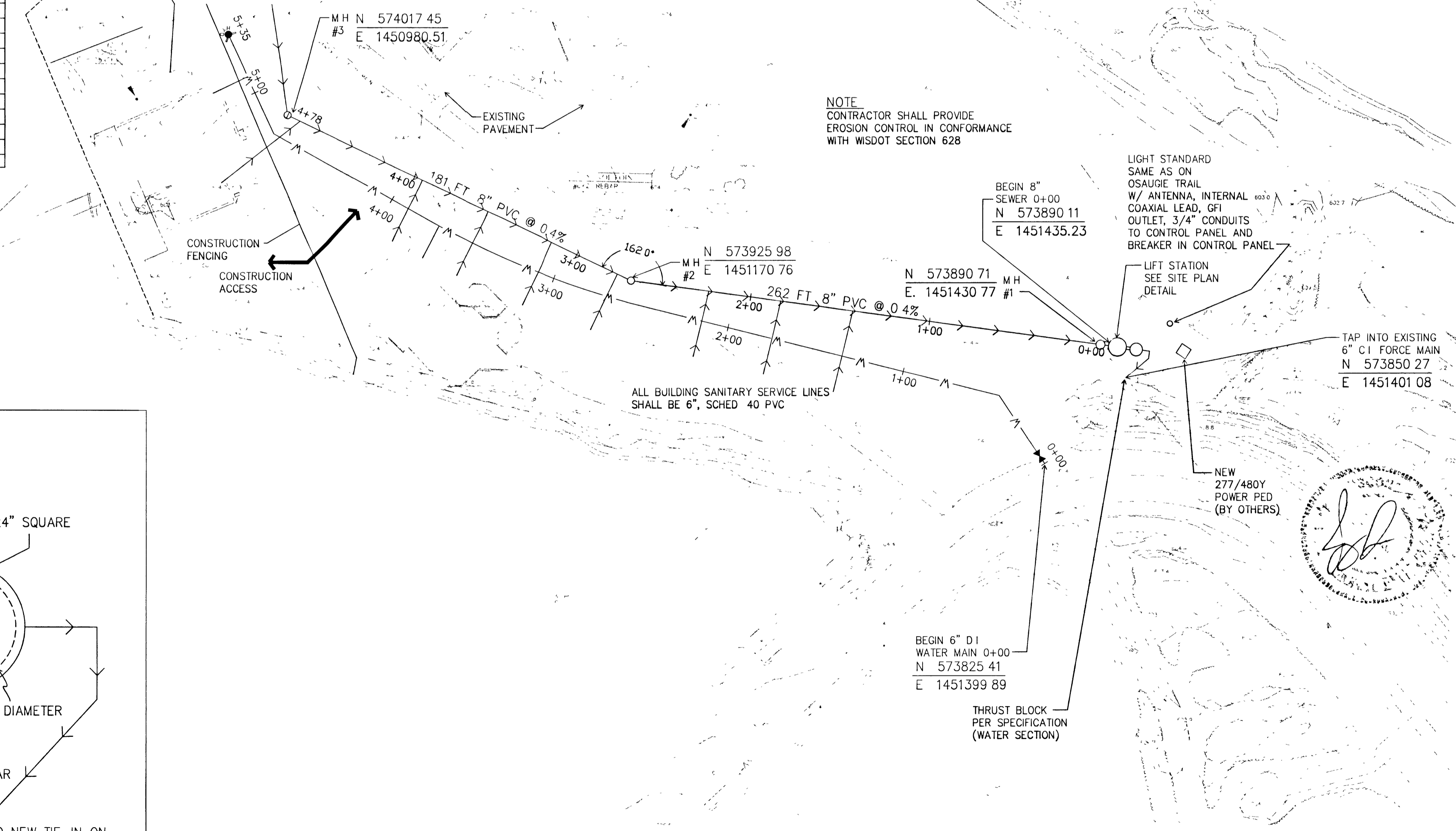
SURVEY DATA FOR SEWER & WATER SYSTEMS					
S/W	STATION	DESCRIPTION	INVERT	NORTHING	EASTING
S	00+00	LIFT STATION INLET	595 59	573890.11	1451435 23
S	00+04	MANHOLE #1 --- OUTLET	595 60	573890.71	1451430 77
		MANHOLE #1 --- INLET	595 70		
		MH #1 --- RIM ELEVATION	606 1		
S	01+43	SANITARY WYE	596 26	573909 32	1451293 60
S		SERVICE CROSSING WATER	598 88	573884 57	1451287 63
S		CAPPED END OF SERVICE		573865 13	1451282 94
S	01+83	SANITARY WYE	596 42	573914 72	1451253 76
S		SERVICE CROSSING WATER	598 88	573894 20	1451248 80
S		CAPPED END OF SERVICE		573874 76	1451244 11
S	02+23	SANITARY WYE	596 58	573920 12	1451213 91
S		SERVICE CROSSING WATER	598.88	573903 83	1451209 98
S		CAPPED END OF SERVICE		573884 38	1451205 29
S	02+67	MANHOLE #2 --- OUTLET	596 76	573925 98	1451170 76
		MANHOLE #2 --- INLET	596 86		
		MH #2 --- RIM ELEVATION	604 5		
S	02+75	SANITARY WYE	596 89	573929 57	1451163 28
S		SERVICE CROSSING WATER	598 88	573917 36	1451157 41
S		CAPPED END OF SERVICE		573899 13	1451148 64
S	03+15	SANITARY WYE	597 05	573947 03	1451126 98
S		SERVICE CROSSING WATER	598 88	573930 69	1451119 13
S		CAPPED END OF SERVICE		573912 62	1451110 44
S	03+55	SANITARY WYE	597 21	573970 05	1451091 23
S		SERVICE CROSSING WATER	598 88	573946 75	1451082 77
S		CAPPED END OF SERVICE		573928 72	1451074 10
S	03+95	SANITARY WYE	597 37	573981 58	1451055 13
S		SERVICE CROSSING WATER	598.88	573965 62	1451047 46
S		CAPPED END OF SERVICE		573947 56	1451038 78
S		SERVICE TO RESTAURANT		COORDINATE	W/ OWNER
S	04+78	MANHOLE #3---END OF MAIN	597 70	574017 45	1450980 51
		MH #3 --- RIM ELEVATION	604 4		
W	00+00	BEGIN WATER MAIN	VERIFY	573825 41	1451399 89
W	00+45	PI LEFT --- 45 ELBOW	596 80	573862 96	1451374 79
W	01+35	CROSSING SEWER SERVICE	596 80	573884 57	1451287 63
W	01+75	CROSSING SEWER SERVICE	596 80	573894 20	1451248 80
W	02+15	CROSSING SEWER SERVICE	596 80	573903 83	1451209 98
W	02+69	CROSSING SEWER SERVICE	596 80	573917 36	1451157 41
W	03+10	CROSSING SEWER SERVICE	596 80	573930 69	1451119 13
W	03+50	CROSSING SEWER SERVICE	596 80	573946 75	1451082 77
W	03+70	SERVICE TEE	596 80	573956 00	1451064 83
W		CAPPED END OF SERVICE	596 80	573938 41	1451055 31
W	03+90	CROSSING SEWER SERVICE	596 80	573965 62	1451047 46
W	04+75	PI RIGHT --- 45 ELBOW	596 80	574007 05	1450972 93
W	05+09	SERVICE TEE	596 80	COORDINATE	W/ OWNER
W	05+35	END-HYDRANT ASSEMBLY	596 80	574061 80	1450947 34

CONTRACTOR SHALL SALVAGE ALL CONTROLS, PUMPS AND HARDWARE FROM EXISTING WETWELL FOR WWTP.

SERVICE FROM EXISTING WETWELL TO MH#3 REMOVE COVER AND HATCH. REPLACE W/ NEENAH 1670 COVER AND FRAME @ FINISHED GRADE (APPROXIMATELY 604 5)

CONTRACTOR SHALL CAP AND ABANDON BOTH ENDS OF THE EXISTING FORCE SERVICE BUILDING EXISTING SANITARY WETWELL FROM METEOR

COORDINATE WORK W/ SEPARATE CONTRACTOR IN THIS AREA



CLIENT
CITY OF SUPERIOR, WI

NO	DATE	REVISION
A	23 JUN 03	CHANGE ORDER

I HEREBY CERTIFY that this plan, specification or report was prepared by me or under my direct supervision and that I am a duly Licensed Professional Engineer under the laws of the State of Wisconsin

SIGNATURE Joy Bergman

TYPED OR PRINTED NAME _____

DATE 6/27/03 REG NO 32653-006

COPYRIGHT 2003 LHB ENGINEERS & ARCHITECTS ALL RIGHTS RESERVED. COPYING, REPRODUCTION OR DISTRIBUTION PROHIBITED WITHOUT EXPRESS WRITTEN PERMISSION.

PROJECT NAME
**BARKER'S ISLAND
SITE IMPROVEMENTS
PHASE 1**

DRAWING TITLE
**BARKER'S ISLAND
SITE UTILITIES**

1"=40'