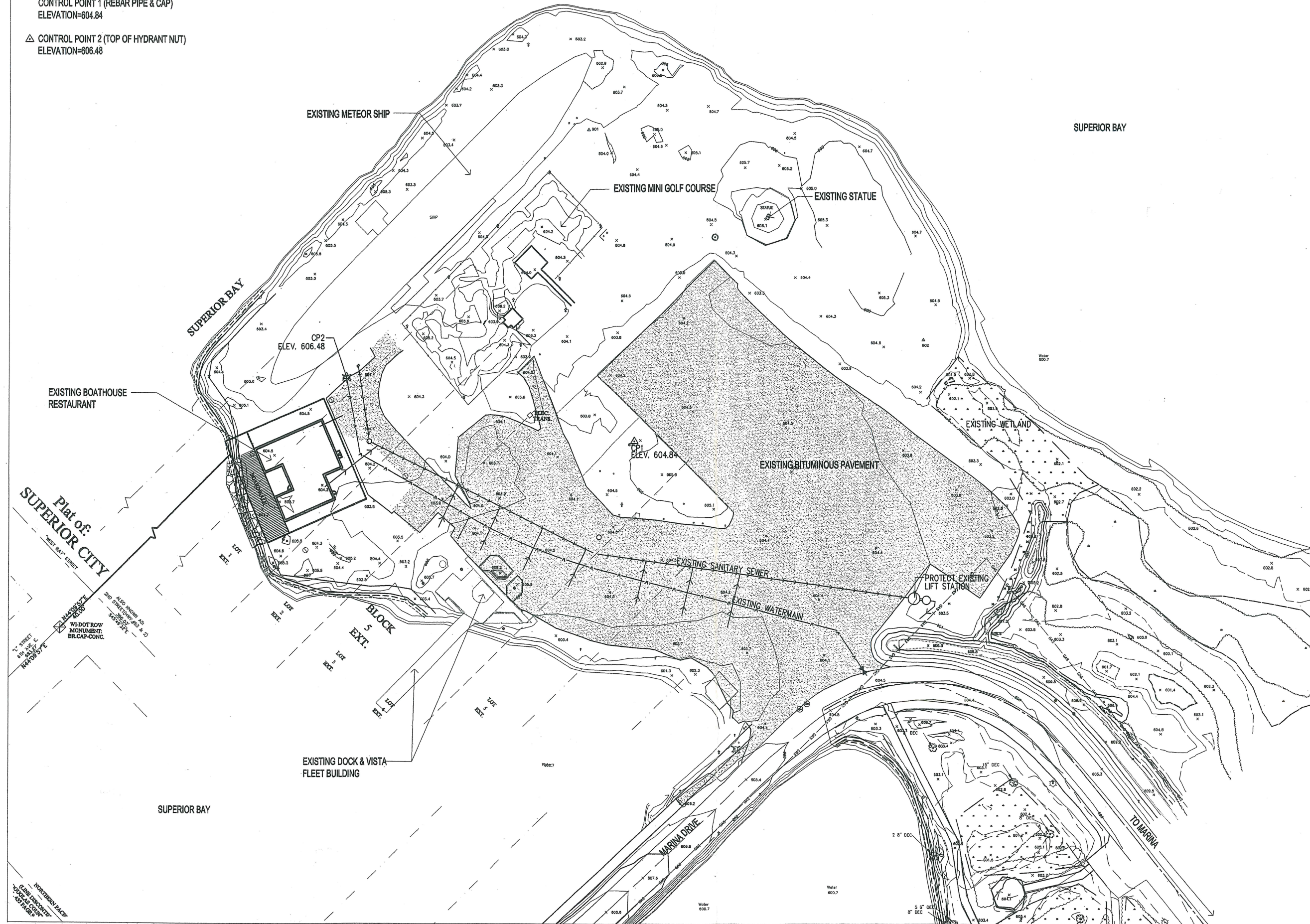


THIS PLAN IS PROVIDED FOR REFERENCE ONLY.

△ = CP1
CONTROL POINT 1 (REBAR PIPE & CAP)
ELEVATION=604.84

△ = CONTROL POINT 2 (TOP OF HYDRANT NUT)
ELEVATION=606.48

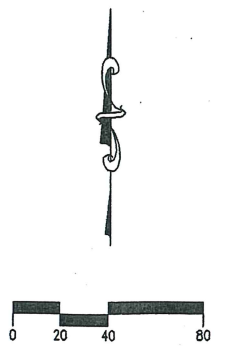


21 W. Superior Street
Suite 500
Duluth, MN 55802
TEL 218/727-8446
FAX 218/727-8456



http://www.LHBcorp.com

DULUTH □ MINNEAPOLIS



CLIENT:
**CITY OF
SUPERIOR, WI**

NO	DATE	REVISION
1	2-7-05	ISSUED FOR BID

COPYRIGHT 2004 BY LHB, INC. ALL RIGHTS RESERVED.

PROJECT NAME:
**BARKER'S ISLAND
SITE IMPROVEMENTS
PHASE 2**

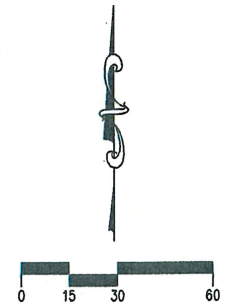
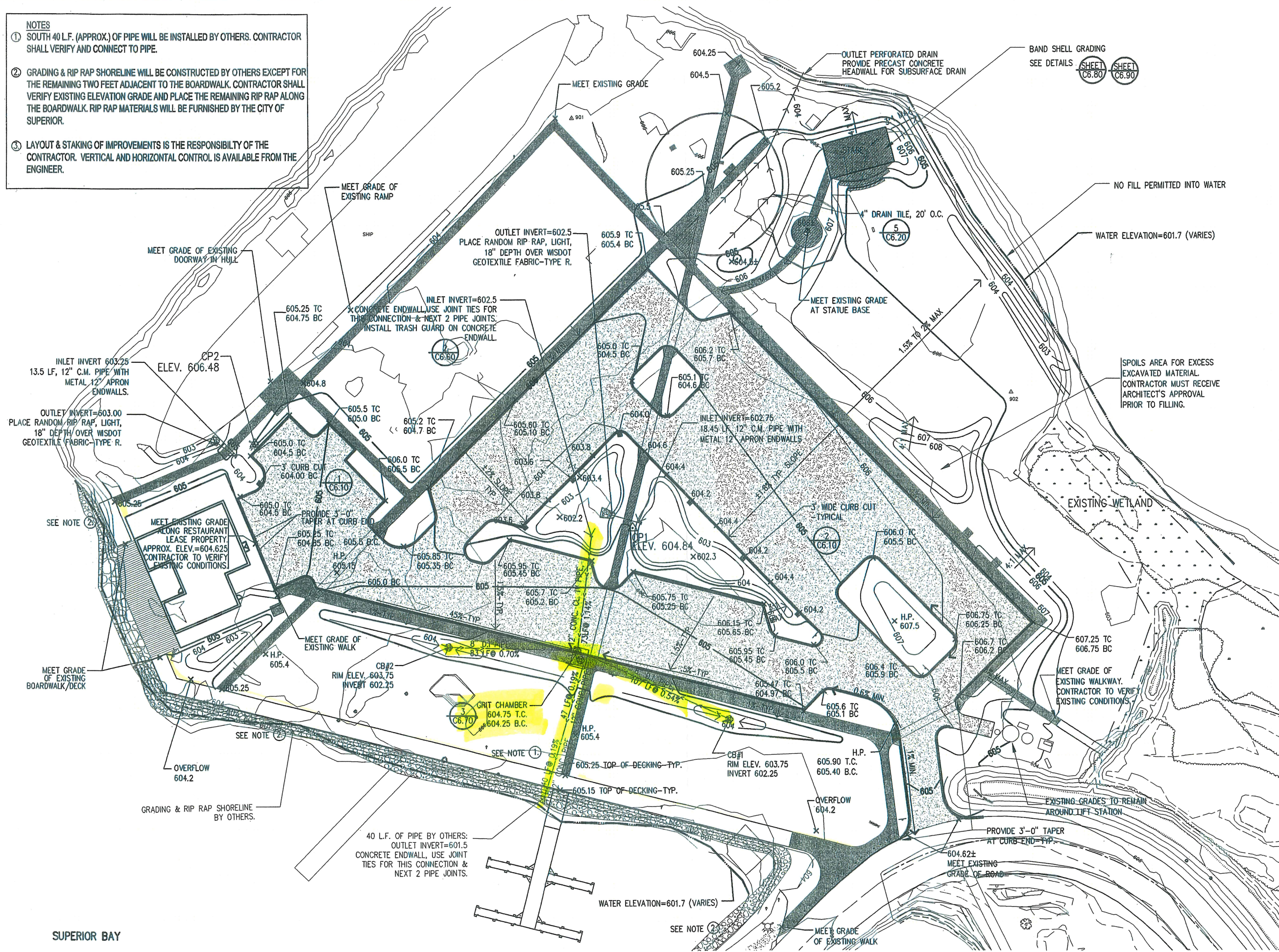
MARINA DRIVE, SUPERIOR, WI

DRAWING TITLE:
**EXISTING CONDITIONS &
SITE SURVEY**

FILE: \\03026\DWGS\C\PHASE 2\C1 EXIST COND\03026C100.d
DRAWN BY:HSJ
CHECKED BY:MSA
PROJ. NO:03026
DRAWING NO:
C1.00



- NOTES**
- ① SOUTH 40 L.F. (APPROX.) OF PIPE WILL BE INSTALLED BY OTHERS. CONTRACTOR SHALL VERIFY AND CONNECT TO PIPE.
 - ② GRADING & RIP RAP SHORELINE WILL BE CONSTRUCTED BY OTHERS EXCEPT FOR THE REMAINING TWO FEET ADJACENT TO THE BOARDWALK. CONTRACTOR SHALL VERIFY EXISTING ELEVATION GRADE AND PLACE THE REMAINING RIP RAP ALONG THE BOARDWALK. RIP RAP MATERIALS WILL BE FURNISHED BY THE CITY OF SUPERIOR.
 - ③ LAYOUT & STAKING OF IMPROVEMENTS IS THE RESPONSIBILITY OF THE CONTRACTOR. VERTICAL AND HORIZONTAL CONTROL IS AVAILABLE FROM THE ENGINEER.



CLIENT:
**CITY OF
SUPERIOR, WI**

NO	DATE	REVISION
2-7-05	ISSUED FOR BID	

COPYRIGHT 2004 BY LHB, INC. ALL RIGHTS RESERVED.

PROJECT NAME:

**BARKER'S ISLAND
SITE IMPROVEMENTS
PHASE 2**

MARINA DRIVE, SUPERIOR, WI

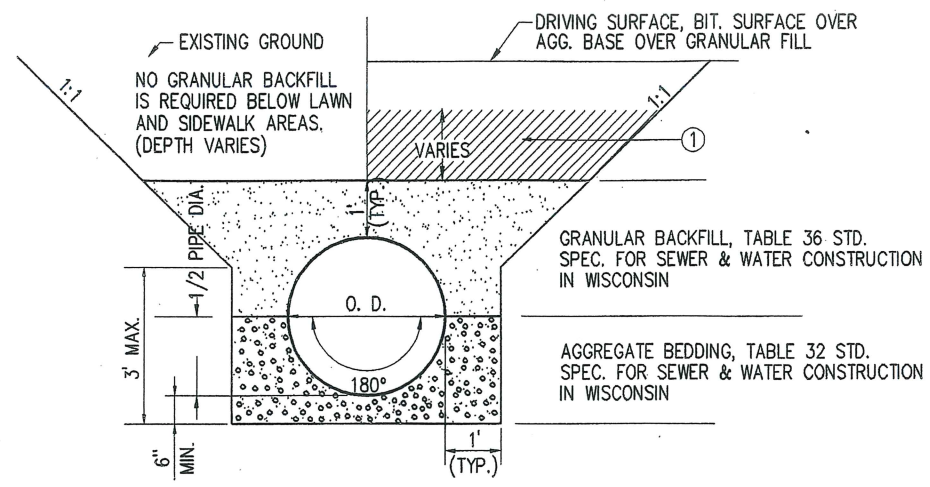
DRAWING TITLE:

**GRADING & STORMWATER
DRAINAGE PLAN**

FILE: ...03026\DWGS\C\PHASE 2\C3 GRADING\03026C300.
DRAWN BY: HSJ
CHECKED BY: MSA
PROJ. NO: 03026
DRAWING NO:

C3.00

SUPERIOR BAY



1 PIPE BEDDING DETAIL FOR ALL SEWER PIPE
(NOT TO SCALE)

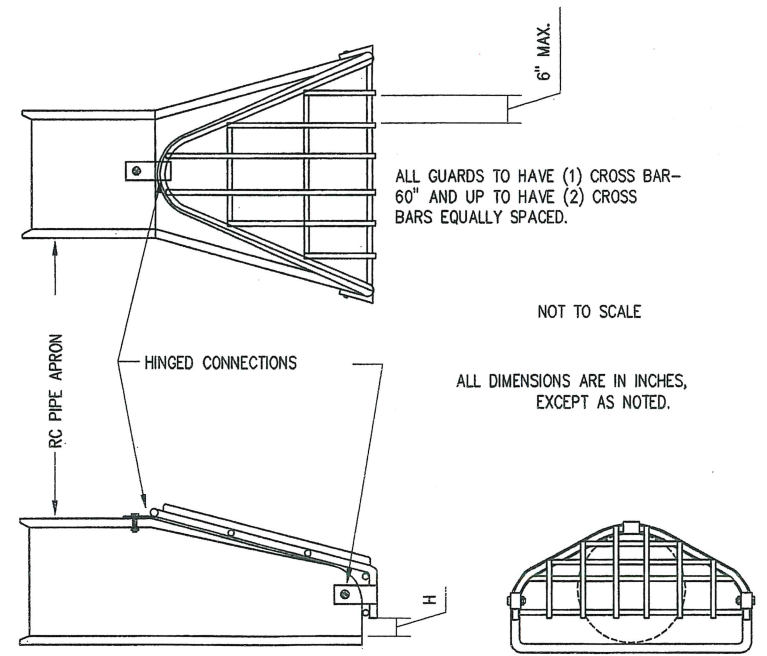
① IN AREAS WHERE EXISTING MATERIAL IS NOT SUITABLE AS BACKFILL, THE CONTRACTOR SHALL PROVIDE GRANULAR BACKFILL AT NO ADDITIONAL COST TO THE OWNER.

TRASH GUARD BAR SIZES				
	CULVERT SIZE	HOLE DIA. REQ'D.	BOLT DIA.	BAR SIZE
ROUND	12"-24"	3/4"	5/8"	#5
	27"-48"	7/8"	3/4"	#6
	54"-90"	1 1/8"	1"	#8
ARCH	22"-28 1/2"	3/4"	5/8"	#5
	36 1/4"-58 1/2"	7/8"	3/4"	#6
	65"-88"	1 1/8"	1"	#8

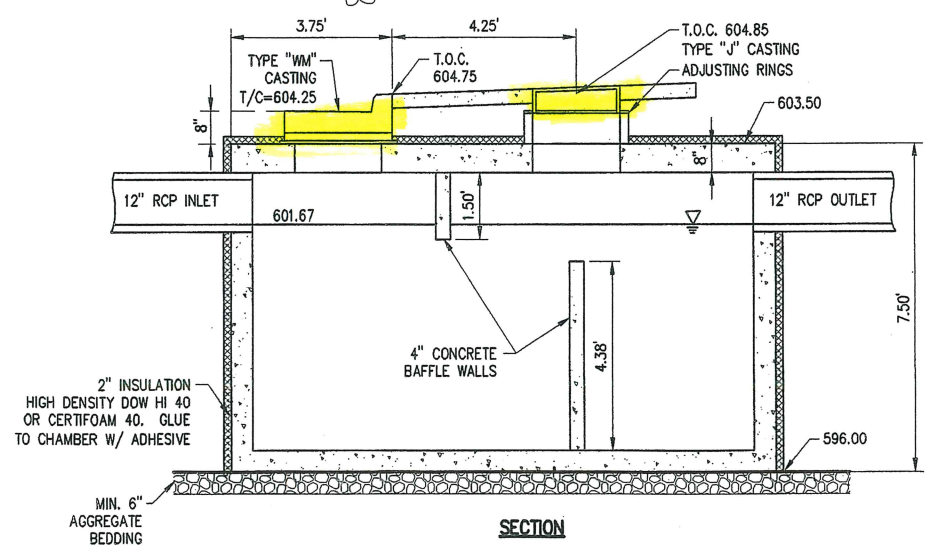
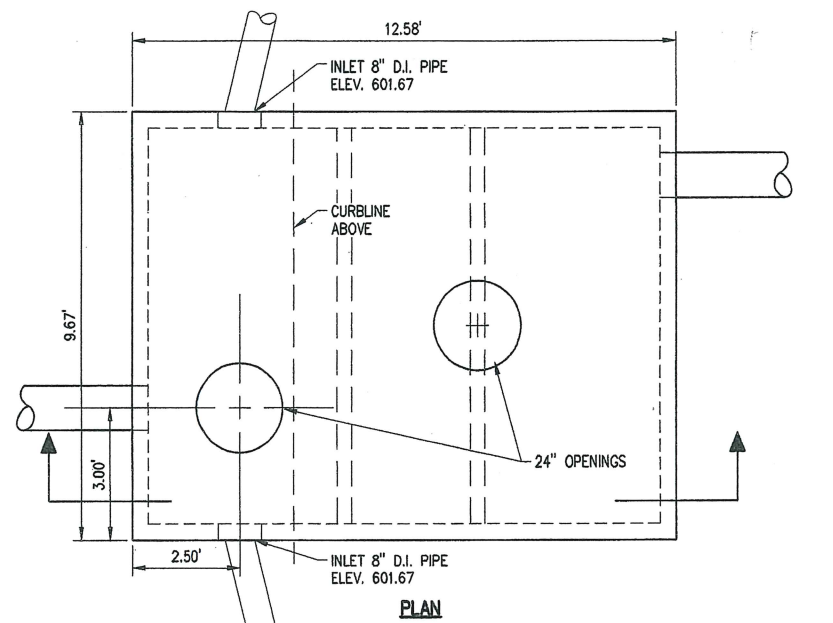
LAG BOLT = CULVERT THK. + 2 1/2"

1. HOT DIP GALVANIZED PER ASTM-A153.

CLEAR OPENING HEIGHTS			
ROUND		ARCH	
CULVERT SIZE	H	CULVERT SIZE	H
12"	2"	22"-28 1/2"	4"
15"	3"	36 1/4"-43 3/4"	5"
18"-24"	4"	51 1/8"-65"	6"
27"-36"	5"	73 1/2"-88"	7"
42"-54"	6"		
60"-72"	7"		
78"-90"	8"		



2 INLET TRASH GUARDS



3 GRIT CHAMBER DETAIL (3100 GALLON)

CLIENT:
CITY OF SUPERIOR, WI

NO.	DATE	ISSUED FOR BID	REVISION
2-7-05			

COPYRIGHT 2004 BY LHB, INC. ALL RIGHTS RESERVED.

PROJECT NAME:
BARKER'S ISLAND SITE IMPROVEMENTS PHASE 2
MARINA DRIVE, SUPERIOR, WI
DRAWING TITLE:
CONSTRUCTION DETAILS