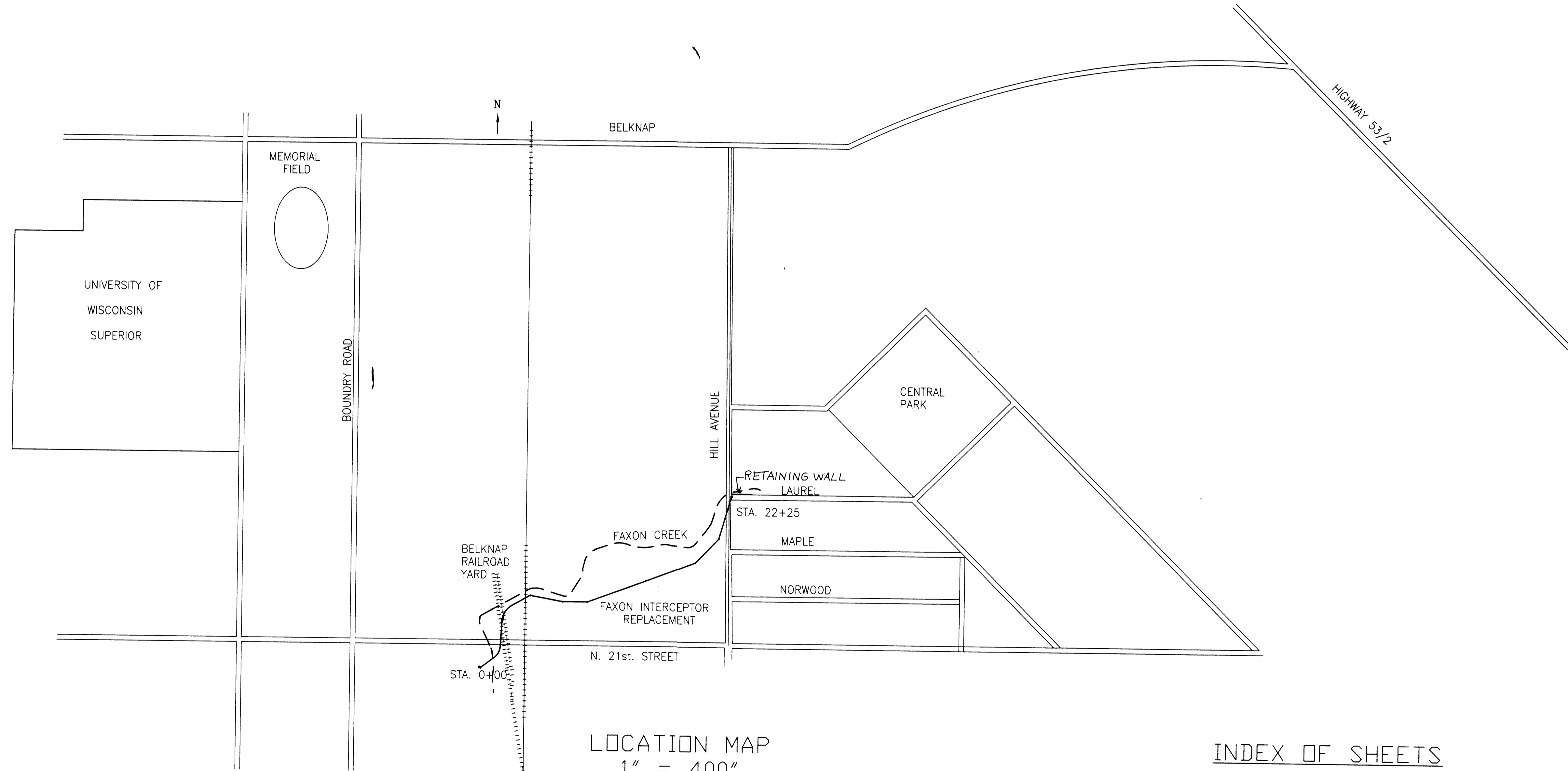


CITY OF SUPERIOR

DEPARTMENT OF PUBLIC WORKS

FAXON INTERCEPTOR REPLACEMENT — PHASE 1



LOCATION MAP
1" = 400"

INDEX OF SHEETS

SHEET NO. 1	TITLE AND LOCATION
SHEET NO. 2	PLAN AND PROFILE
SHEET NO. 3	PLAN AND PROFILE
SHEET NO. 4	DETAIL DRAWINGS AND ESTIMATED QUANTITIES
SHEET NO. 5	RETAINING WALL

LEGEND

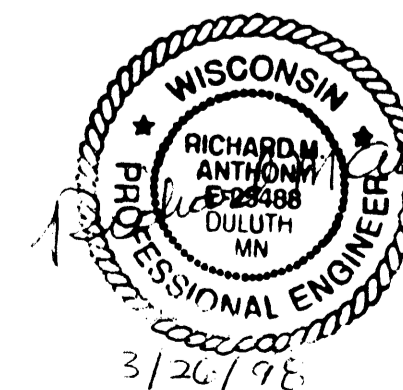
CONVENTIONAL SYMBOLS

- COUNTY LINE
- CORPORATE LIMITS
- PROPERTY LINE
- LOT LINE
- LIMITED EASEMENT
- EXISTING RIGHT OF WAY
- PROPOSED OR NEW R/W LINE
- SURVEY LINE
- SLOPE INTERCEPT
- ORIGINAL GROUND
- MARSH OR ROCK PRFILE
- EXISTING CULVERT

UTILITIES

- GAS
- ELECTRIC
- WATER
- TELEPHONE OR TELEGRAPH
- PETROLEUM
- SERVICE PEDESTAL
- CABLE MARKER
- TELEPHONE POLE
- RAILROAD
- MARSH AREA
- WOODED OR SHRUB AREA

PREPARED BY:
RMA ENGINEERING COMPANY
DULUTH, MN.



REVISED 5/7/98