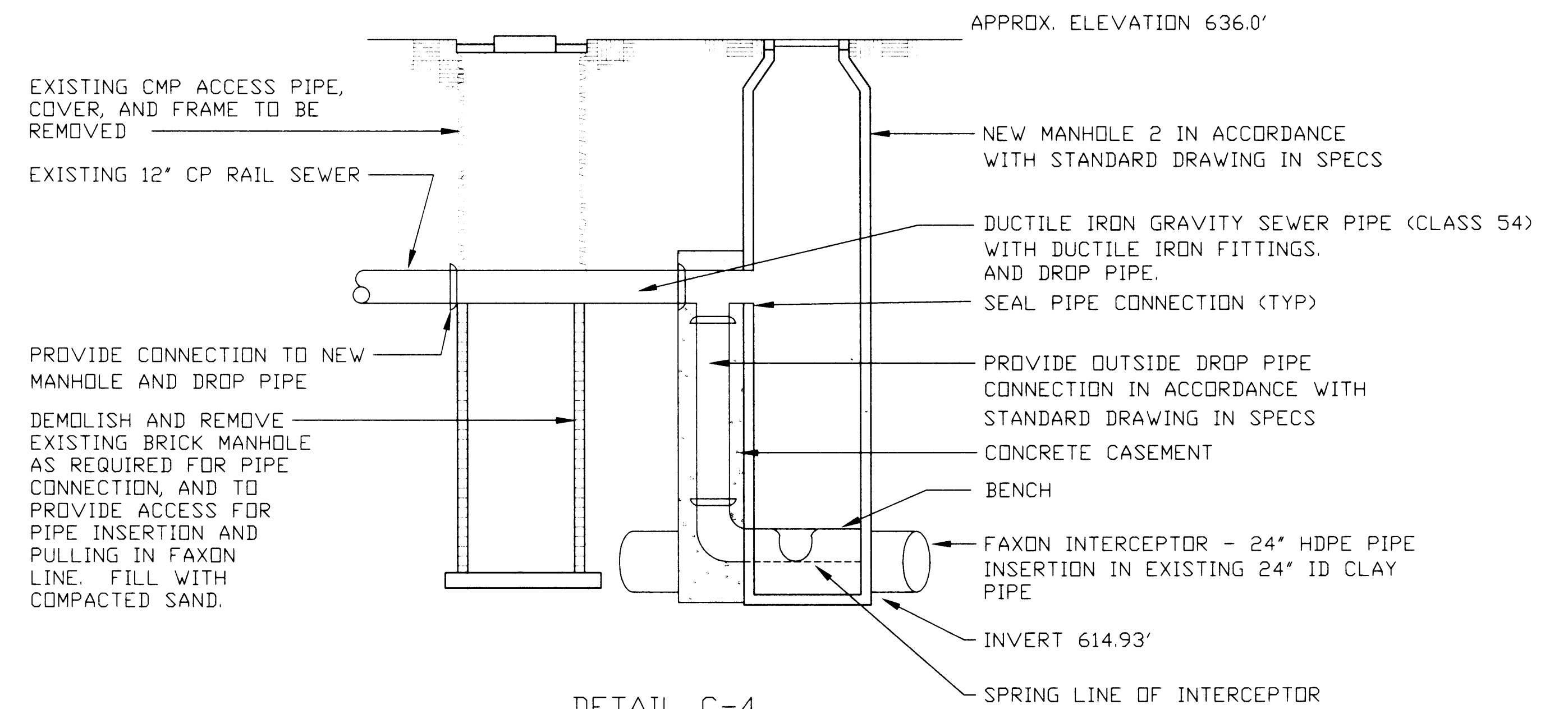


DETAIL B-4
EXCAVATION IN BELKNAP RAILROAD YARD
SCALE 1"=20'

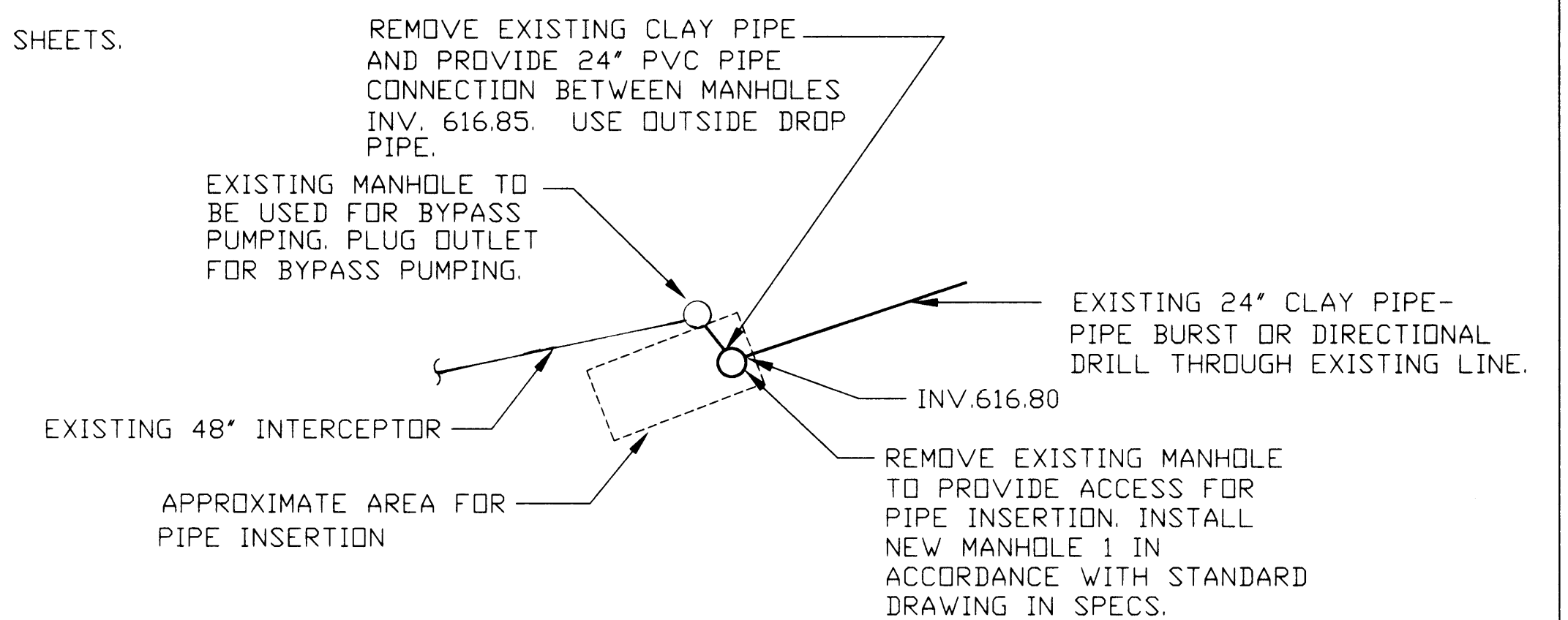
DRAINAGE STRUCTURES									
STRUCT. NO.	STATION	TOP OF CASTING ELEV.(MH)	INVERT ELEV.	MANHOLE DEPTH-V.L.F.	PIPE SIZE /TYPE		TO DRAINS		
					24" HDPE	24" PVC	NO.	GRADE %	ELEV.
1	0+00	632.75	616.80	16.0	374		2	0.50	614.93
2	3+74	636.0	614.87	21.2	247		3	0.51	613.60
3	6+21	628.0	613.55	14.5		208	4	0.20	613.13
4	8+29	626.5	613.08	13.5		160	5	0.20	612.76
5	9+89	630.5	612.71	17.8		400	6	0.20	611.91
6	13+89	630.6	611.86	18.8		335	7	0.20	611.19
7	17+24	628.0	611.14	16.9		216	8	0.20	610.71
8	19+40	627.7	610.66	17.1	285		9	0.30	609.80
9	22+27	622.4	609.80	12.6			-	-	-



DETAIL C-4
PIPE CONNECTION TO MANHOLE 2
NO SCALE

NOTES:

- APPROXIMATE SHEATHING DIMENSIONS AND EXCAVATION LIMITS ARE SHOWN. ACTUAL LIMITS REQUIRED WILL BE APPROVED BY ENGINEER AND RAILROAD.
- SHEATHING SHALL BE MADE WITH HOT FORMED STEEL SHEETS.
- PROVIDE PASSAGE IN SHEATHING FOR SEWER LINES PROVIDE BRACING AS NECESSARY.
- RAILROAD WILL REMOVE TRACK IN CONSTRUCTION AREA. RAILROAD WILL REPLACE TRACK AFTER BACKFILL TO THE ORIGINAL GRADE. SEE SPECIFICATIONS FOR BACKFILL AND COMPACTION REQUIREMENTS.
- IF PVC PIPE IS USED BETWEEN MANHOLES 8 AND 9, PVC PIPE ESTIMATE IS 1604 L.F. IF HDPE PIPE IS USED BETWEEN MANHOLES 8 AND 9, PVC PIPE ESTIMATE IS 1319 L.F. AND HDPE, SDR 13.5 PIPE ESTIMATE IS 285 L.F.



DETAIL A - 4
PIPE CONNECTION AT MANHOLE 1
SCALE 1"=20"

ESTIMATED QUANTITIES			
ITEM	UNIT	ESTIMATED QUANTITY	BID ITEM
24" PVC, SDR 35	L.F.	10	1
24" HDPE, SDR 11	L.F.	621	1
12" D.I. CLASS	L.F.	20+ FITTINGS	1
MANHOLES 1, 2, 3	V.L.F.	52	1
24" PVC, SDR 35	L.F.	1606 (SEE NOTE 5)	2
28" HDPE, SDR 13.5	L.F.	285 (SEE NOTE 5)	2
MANHOLES 4-9	V.L.F.	99	2

I HEREBY CERTIFY THAT THIS PLAN WAS PREPARED BY ME, OR UNDER MY DIRECT SUPERVISION, AND I AM A DULY REGISTERED PROFESSIONAL ENGINEER UNDER THE LAWS OF THE STATE OF WISCONSIN.
Richard M. Anthony
DATE: 3/26/98 REG. NO.: 25488

REVISIONS		
NO.	BY	DATE
1	RMA	5/7/98

FAXON INTERCEPTOR DETAILS

DESIGNED BY RMA	SCALE AS NOTED	JOB NO.
DRAWN BY DMS	RMA ENGINEERING COMPANY	98-01
CHECKED BY	CONSULTING ENGINEERS	SHEET 4 OF 5
APPROVED BY		4 C.F.S.